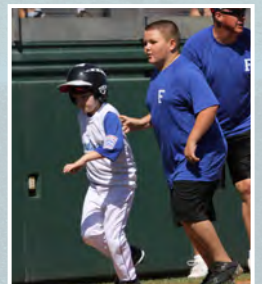


LITTLE LEAGUE[®]

INTERNATIONAL





CITY OF KIRKLAND
WASHINGTON
E.M.E.
← 5200 MILES
JUNIOR SOFTBALL WORLD SERIES

CANADA
← 2090 MILES
JUNIOR SOFTBALL WORLD SERIES

EAST
← 2420 MILES
JUNIOR SOFTBALL WORLD SERIES

HOST
← 2 MILES
JUNIOR SOFTBALL WORLD SERIES

WEST
ASIA PACIFIC
→ 6648 MILES
JUNIOR SOFTBALL WORLD SERIES

WINNIEBAGO
→ 725 MILES
JUNIOR SOFTBALL WORLD SERIES



HISTORY

- Founded in 1939 by Carl Stotz
- In 1974, Little League's Federal Charter and rules are amended to allow participation by girls, and Little League creates the Major and Senior League Softball programs.
- Later that year, the first Little League Softball® World Series Tournament is held in Freeport, N.Y., where Wellswood Little League (Tampa, Fla.) earns the first championship title.
- In 1982, Little League expands teenage offerings to include Big League Softball
- Canada was the first International country to submit a tournament team into the International Tournament in 1989 (Senior division).
- Little League expanded television coverage to include the championships of each Softball World Series for the 2001 tournament season to be broadcast on ESPN2. Rosario Y Cardona Little League (Puerto Rico) became first international team to win a Little League Softball World Series title.
- In 2002, Windmills Little League of Utrecht, Netherlands, becomes the first European team to win a World Series (Junior League Softball division).
- Today Little League is the world's largest and most respected youth sports organization with more than 2.4 million participants playing Little League Baseball and Softball in all 50 states and more than 80 countries across the world.





MISSION OF LITTLE LEAGUE®

To provide a wholesome, healthy activity for children using the ball field as a classroom to instill discipline, teamwork, sportsmanship and fair play.

MEMBER BENEFITS

THE LITTLE LEAGUE® INTERNATIONAL TOURNAMENT

- 9 World Series tournaments for boys and girls ages 11-18, all televised worldwide on ABC and the ESPN family of networks.
- 4 other tournaments that advance to the state level.
- The Little League International Tournament is the largest, and most well-renowned, youth sports tournament in the world.
- More than 30,000 games are played in 2 months to determine 9 World Series champions.
- Over 70 games are televised each year, including each Softball World Series Championship and the Little League Softball®, Senior League Softball and Big League Softball World Series semifinals.
- Little League reimburses leagues for travel to the state level and beyond at a rate of \$1 per mile for one round trip to each tournament site.
- Media coverage is superior to that of any other youth sports tournament including coverage on ABC, the ESPN family of networks and in major newspapers across the country.

TRAINING AND EDUCATION

- FREE access to Little League's Coach Resource Center for all chartered leagues LittleLeagueCoach.org.
 - Includes areas both for baseball and softball, as well as different areas for various ages of players from Tee Ball to Big League
 - Updated regularly and includes video clips, articles and the latest news.
- Clinics and seminars for managers, coaches, umpires and league officials are offered at Williamsport, regional centers and many other locations across the country every year.
- FREE access to Little League's Umpire Resource Center - LittleLeagueUmpire.org.
 - Includes content for baseball and softball, as well as for 60', 70' and 90' diamonds.

LITTLE LEAGUE® IS FOR EVERYONE

- Programs for boys and girls ages 4 – 18.
- The Little League Challenger Division® provides opportunities for boys and girls who are developmentally or physically challenged.
- Little League provides a healthy combination of community-based programming by offering regular season play among local teams and access to them world's largest youth sports tournament for more advanced players.





LITTLE LEAGUE® SAVES YOUR LEAGUE MONEY

- Most leagues can charter AND insure teams through Little League® for an average cost of about \$6 per player - less than what most programs were previously paying for their local insurance policy.
- 125 FREE background checks for each league and an unlimited number of checks at \$1.40 per check.
- \$1 per mile travel reimbursement for tournament travel to the state level and beyond (one round trip).
- FREE Rulebooks and Operating Manual.
- Grants available through the Urban Initiative program and Challenger Divisions for qualifying leagues.
- Leagues can acquire 501(c)(3) tax-exempt status free of charge under Little League's group exemption.

COMMUNITY BENEFITS

- Allows communities flexibility when chartering: baseball and softball operations under one umbrella or as standalone charters.
- Provides opportunities for a community to be represented in the Little League International Tournament

- Various opportunities to host Little League tournaments

INSTANT RECOGNITION

- The "Little League" name is the most recognized and respected name in youth sports.
- Leagues use the "Little League" brand to grow local program through name recognition and the many opportunities Little League offers.
- Worldwide recognition every August as over 70 Little League Baseball and Softball games are televised worldwide on ABC and the ESPN family of networks.

SERVICE AND SUPPORT

- FREE Rules Interpretation Service by telephone, email and Facebook
- FREE Operating Manuals provided to board members every year
- FREE Rulebooks
- Full-time staff available to answer questions and concerns
- 5 regional offices in the United States to help service leagues on a local level



LITTLE LEAGUE® INITIATIVES

LITTLE LEAGUE CHALLENGER DIVISION®

- Provides an opportunity for boys and girls ages 4-18, or up to age 22 if still attending high school, with physical and developmental challenges to enjoy the full benefits of participation in a Little League® program
- Supplies a framework so that leagues may offer a structured, athletic activity for all youth in their community
- “Adaptive Baseball”
- Players use “buddies” to assist them during game play.
- Special rules allow for flexibility to adapt the game to meet the needs of the player.



CHILD PROTECTION PROGRAM

- Established in 1998 to educate local volunteers on ways that they can help ensure the safety of children in their league.
- Beginning in 2003, leagues are now required to conduct background checks on managers, coaches, and other volunteers with regular access to the children in the league.
- Little League provides 125 free background checks, and an unlimited number of checks at \$1.40 per check, to all leagues through a partnership with First Advantage.

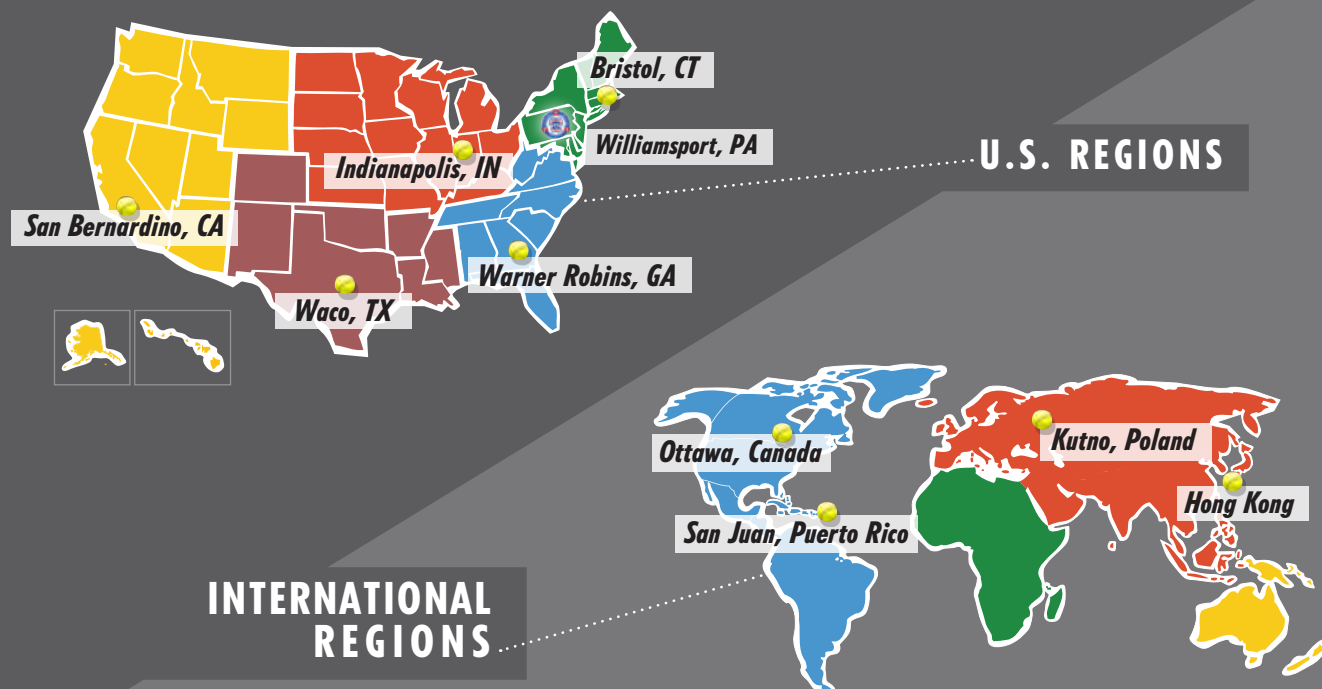


URBAN INITIATIVE

- The Little League Urban Initiative Program is a vigorous attempt to provide access to the benefits of the Little League program to boys and girls within urban communities where safety, security and comfort are not common realities for children.
- The program’s goal is to identify and then create or renew baseball and softball programs in these communities bringing the values of teamwork, fair play, respect for authority and the desire to excel to the children’s lives.
- There are 3 main categories of assistance available: equipment acquisition, training and education and in some cases, cash grants for capital improvement projects and field development/renovation.



LITTLE LEAGUE® FIELD CENTERS



STRUCTURE OF LITTLE LEAGUE®

LITTLE LEAGUE® INTERNATIONAL

- Located in South Williamsport, PA
- Home to 80 full-time employees
- Responsible for International Operations of Little League

REGIONAL HEADQUARTERS

- Five regional headquarters are located across the United States.
In addition, offices are located in Canada, Hong Kong, Puerto Rico and Poland
- Provide support to leagues and district administrators within each region
- Host various training seminars and clinics

DISTRICT ADMINISTRATORS

- Volunteers who oversee leagues at a local level
- Elected every 3 years by leagues in the district
- Act as a liaison between local leagues and the regional offices
- More than 650 District Administrators worldwide

LOCAL LEAGUES

- Local, volunteer-run baseball and softball programs that choose to affiliate with Little League

INTERNATIONALLY More than 7,000 leagues worldwide



DIVISIONS OF BASEBALL

TEE BALL

- For players ages 4-7
- Instructional program focused on fun, fitness and fundamentals.
- Players either hit off a tee or are pitched to by a coach.
- May be played on a 50' or 60' diamond
- More information at: LittleLeague.org/teeball



MINOR LEAGUE

- For players ages 7-11.
(6 year olds may play provided they have 1 year of Tee ball experience)
- Instructional program that builds on the fundamentals learned in Tee Ball.
- May be broken into several sub divisions such as "machine pitch," "coach pitch," "player pitch," etc.
- Allows players an opportunity to gain more experience before advancing to the Little League Division.
- Played on a 60' diamond with a 46' pitching distance.
- Tournament opportunities for players ages 9-11.

LITTLE LEAGUE® (MAJORS)

- For players ages 9-12.
- A league may limit this division to 10- to 12-year-old players or 11- to 12-year-old players.
- Players from the Major Division may qualify for a league's 11- to 12-year-old tournament team that has an opportunity to advance to the Little League Baseball World Series in South Williamsport.
- Played on a 60' diamond with a 46' pitching distance.

INTERMEDIATE (50/70) DIVISION

- For players ages 11-13.
- Players are permitted to lead off and steal.
- Games are played on a 70' diamond with a 50' pitching distance.
- A full range of tournament play is offered, including a World Series.
- A league may choose to limit this division to players ages 11-12 or 12-13.
- Participants may simultaneously participate in the Major or Junior Division while playing in the Intermediate Division.

JUNIOR LEAGUE

- For players ages 12-14.
- A league may choose to limit this division to players age 13 or 13-14.
- A full range of tournament play is offered including a World Series.
- May be played on either a 80' diamond with a 54' pitching distance or on a conventional 90' diamond with a 60'6" pitching distance.

SENIOR LEAGUE

- For players ages 13-16.
- A league may choose to limit this division to players ages 14-15, 14-16 or 15-16
- A full range of tournament play is offered including a World Series.
- Games are played on a conventional 90' diamond.

BIG LEAGUE

- For players ages 15-18
- A league may choose to limit this division to players ages 16-18 or 17-18.
- A full range of tournament play is offered including a World Series.
- Games are played on a conventional 90' diamond.



DIVISIONS OF SOFTBALL

TEE BALL

- For players ages 4-7
- Instructional program focused on fun, fitness and fundamentals.
- Players either hit off a tee or are pitched to by a coach.
- May be played on a 50' or 60' diamond
- More information at: LittleLeague.org/teeball

MINOR LEAGUE

- For players ages 7-11
(6 year olds may play provided they have 1 year of Tee Ball experience)
- Instructional program that builds on the fundamentals learned in tee-ball
- May be broken into several sub-divisions such as "machine pitch," "coach pitch," "player pitch," etc.
- Allows players an opportunity to gain more experience before advancing to the Little League Division.
- Played on a 60' diamond with a 35' pitching distance.
- Tournament opportunities for players 9-11.



LITTLE LEAGUE® (MAJORS)

- For players ages 9-12.
- A league may limit this division to 10- to 12-year old players or 11-12-year-old.
- 12-year-olds may play in both the Major and Junior Division.
- Players from the Major Division may qualify for a league's 11- to 12-year-old tournament team that has an opportunity to advance to the Little League Softball World Series.

- Played on a 60' diamond with a 40' pitching distance.

JUNIOR LEAGUE

- For players ages 12-14.
- A full range of tournament play is offered including a World Series.
- 12-year-olds may play in both the Major and Junior Divisions.
- Games are played on a 60' diamond with a 43' pitching distance.
- Teenage division softball rules closely resemble the National Federation of State High School Associations (NFHS).

SENIOR LEAGUE

- For players ages 13-16.
- A league may choose to limit this division to players ages 14-16 or 15-16.
- A full range of tournament play is offered including a World Series.
- Games are played on a 60' diamond with a 43' pitching distance.
- Teenage division softball rules closely resemble the National Federation of State High School Associations (NFHS).

BIG LEAGUE

- For players ages 14-18
- A league may choose to limit this division to players ages 15-18, 16-18, or 17-18.
- A full range of tournament play is offered including a World Series.
- Games are played on a 60' diamond with a 43' pitching distance.
- Teenage division softball rules closely resemble the National Federation of State High School Associations (NFHS).



TESTIMONIALS



"I would not be the coach and former player I am today, if not for my Little League® manager and my brother, who laid my foundation for the love of the game. I came from a very small town. I was the player that wasn't the biggest, fastest or smartest, but still I learned through Little League that I have no limits. It's a joy to recognize Little League because it set a standard of excellence for me as a person, athlete, and teammate... I love Little League."

- Sue Enquist , Former UCLA Player & Coach, 11 National Champions



"I wanted to play in college and playing Big League Softball gave me the chance to compete and be the best. I attribute all of my wanting to coach with the game of Little League®. Those were the favorite times of my life."

-Heather Tarr, Head Softball Coach, University of Washington



"Little League® not only provided me a place to play with friends and learn the game, it was where I developed my love for the game. I always dreamed of competing at the highest level, and was able to accomplish that goal thanks to my start in Little League. Even more, my Little League experiences taught me how to work as part of a team and the value of giving back."

- Crystl Bustos, Two-Time Olympic Gold Medalist and Softball Clinician

WHAT OTHER LITTLE LEAGUE® PROGRAMS HAVE TO SAY...

SERVICE - "For our area's three Little Leagues (1,700 kids, 140 teams) the Little League organization has been there, from the District Administrator, all the way up through the regional centers, to Little League Headquarters." - Oregon League President

STRUCTURE - "We didn't have to invent anything. There is a wealth of things to look at (instructional material), and I'm comfortable saying we can get better by doing what is out there. Since we've joined, we've helped three areas that did not have programs before." - Connecticut District Board Member

LITTLE LEAGUE® STANDS OUT - "Joining Little League created interest for kids. It's a feather in our cap if we say we belong to Little League. Being with Little League helps show we are trying to improve, and do good things for our program." - North Carolina League President

Chartering with Little League® for the first time is a quick and easy 3-step process that can often be completed in less than two weeks. For additional information about how to charter, you can also contact Little League International at (570) 326-1921.

3 Steps to Chartering with Little League for the First Time:

1. Complete and Submit a Charter Application

The Little League Charter Application is the form where you will indicate how many teams your league will be chartering in each division. Additionally, this is the form where you can purchase accident and liability insurance through Little League. For additional information on how to charter with Little League, you can view an interactive sample charter application online at LittleLeague.org/samplecharter.

Once completed, the charter application can be mailed to:

Little League International
539 US Highway 15
PO Box 3485
Williamsport, PA 17701-0485

To request a charter application, you can either visit LittleLeague.org and click the “Start A League” link, or contact Little League International at (570) 326-1921 and ask for League Development, LittleLeague.org/affiliate

2. Submit a League Constitution and List of Board Members

Each affiliated Little League program must submit a League Constitution. A constitution is the legal document that governs the operation of your Little League program. We strongly encourage all leagues to adopt the Little League Model Constitution; however, if you have an existing constitution you may submit that as well. Along with your League Constitution, please also submit a list of current board members for our records. The Little League Model Constitution can be found online at LittleLeague.org/constitution.

Once completed, please submit your Constitution and list of board members to your respective regional office.

3. Submit a Boundary Map

All Little League programs must file a boundary map of the area from which they will draw their players. The boundary map should include a closed boundary, as well as a written description of that boundary. You should work with your local District Administrator to complete the map. If you are not sure who the District Administrator for your area is, please contact Little League International or your regional office. Once completed, please have the map signed by your District Administrator and League President and submit your boundary map to your respective regional office.

FREQUENTLY ASKED QUESTIONS

How much does it cost to join Little League®?

The cost of affiliating with Little League is \$16 per team for all age levels in baseball and softball.

What does my league need to do in order to join Little League®?

There are three steps that must be completed in order to charter with Little League.:

First, you must complete and submit a Charter Application. You may request a charter application online at: LittleLeague.org/affiliate.

Second, you must submit a copy of your league's constitution. A sample constitution that you may use can be found at: LittleLeague.org/constitution.

Third, you must submit a league boundary map signed by your league president and your Little League District Administrator. A boundary map should be a physical map of your community with your league boundaries outlined and described in writing.

Where should I send my charter application?

Your charter application should be sent to Little League International at:

539 US Highway 15

PO Box 3485

Williamsport, PA 17701-0485

Your boundary map and constitution should be sent to your respective regional office.

What is the deadline for submitting a charter application?

Leagues should submit their charter application prior to beginning their regular season. The deadline to submit a charter application is typically the first week of June.

How long does it take for my charter application to be approved?

Once submitted, most applications are approved within 2 weeks.

Are Little League® programs required to carry insurance?

Yes. All Little League programs are required to carry both accident and general liability insurance. Both of those insurances are available at very competitive rates through the Little League program. Often leagues can save money by purchasing insurance through the Little League program.

What amount should I place in Box G on the Charter Application (liability insurance)?

Liability insurance is based on the number of teams your league is chartering.

To receive a quote, contact

Little League's

Liability Insurance Department

(570) 326-1921 option #4

Will I receive rule books?

Each league receives one rule book free of charge for each team chartered. Rule books will be sent after your league's charter is processed.

When can my league register to participate in the Little League® International Tournament?

A Tournament Enrollment Application will be mailed to your league several months before the start of the tournament. Your league may register at that time.

How much does it cost to compete in the Little League® International Tournament?

The tournament entry fee is \$150 per team. This is paid prior to entering the district tournament and covers all tournament participation through the World Series level of play. Leagues will be reimbursed for tournament travel at a rate of \$1 per mile for one round trip to the tournament site for all tournament play to the state level and beyond.





LITTLE LEAGUE® INTERNATIONAL • BASEBALL AND SOFTBALL
539 U.S. Highway 15 • P.O. Box 3485 • Williamsport, PA 17701-3485 • 570-326-1921 • Fax: 570-326-1074

On The Web: LittleLeague.org

Become a fan: facebook.com/LittleLeagueBaseballAndSoftball
Follow us: twitter.com/LittleLeague