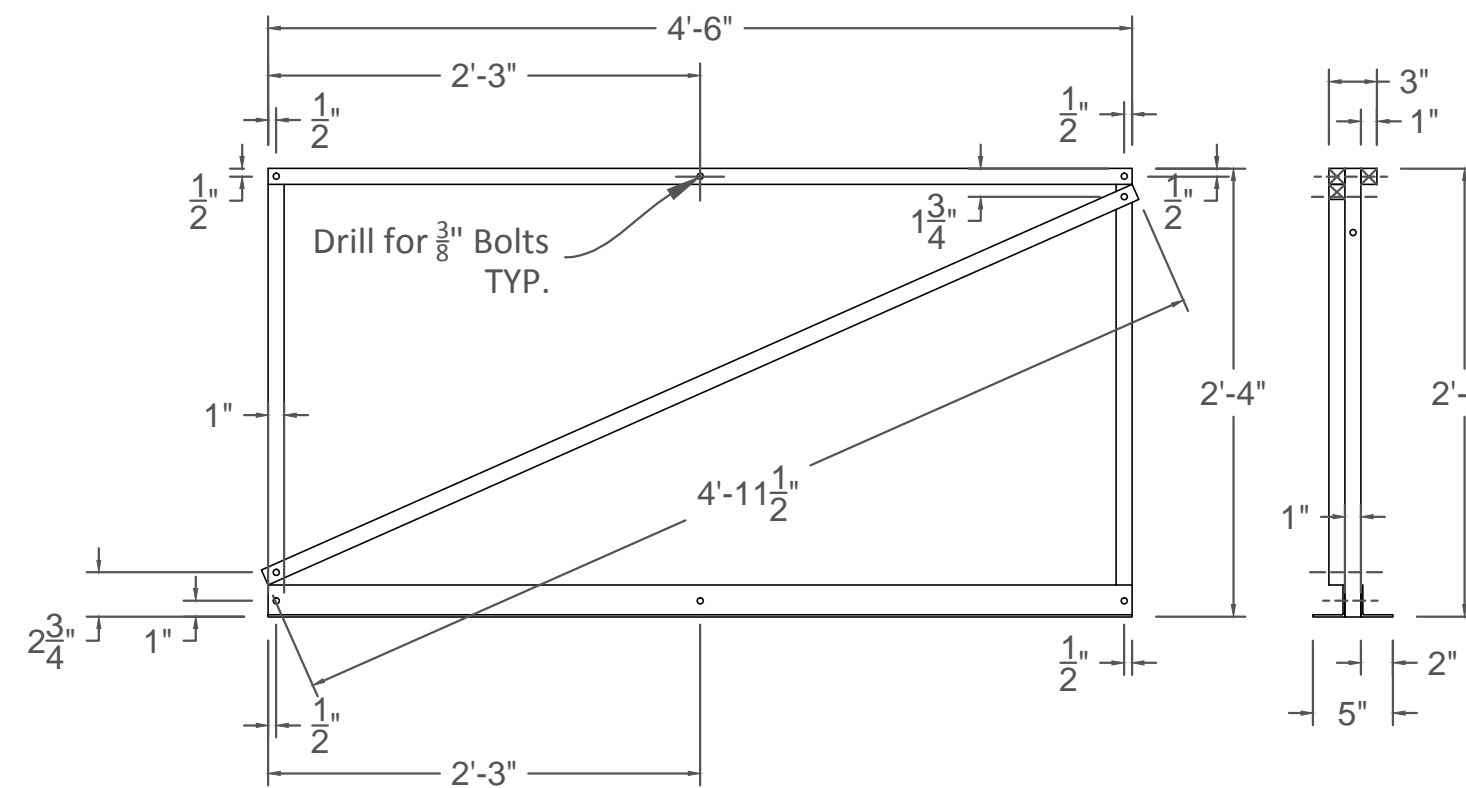
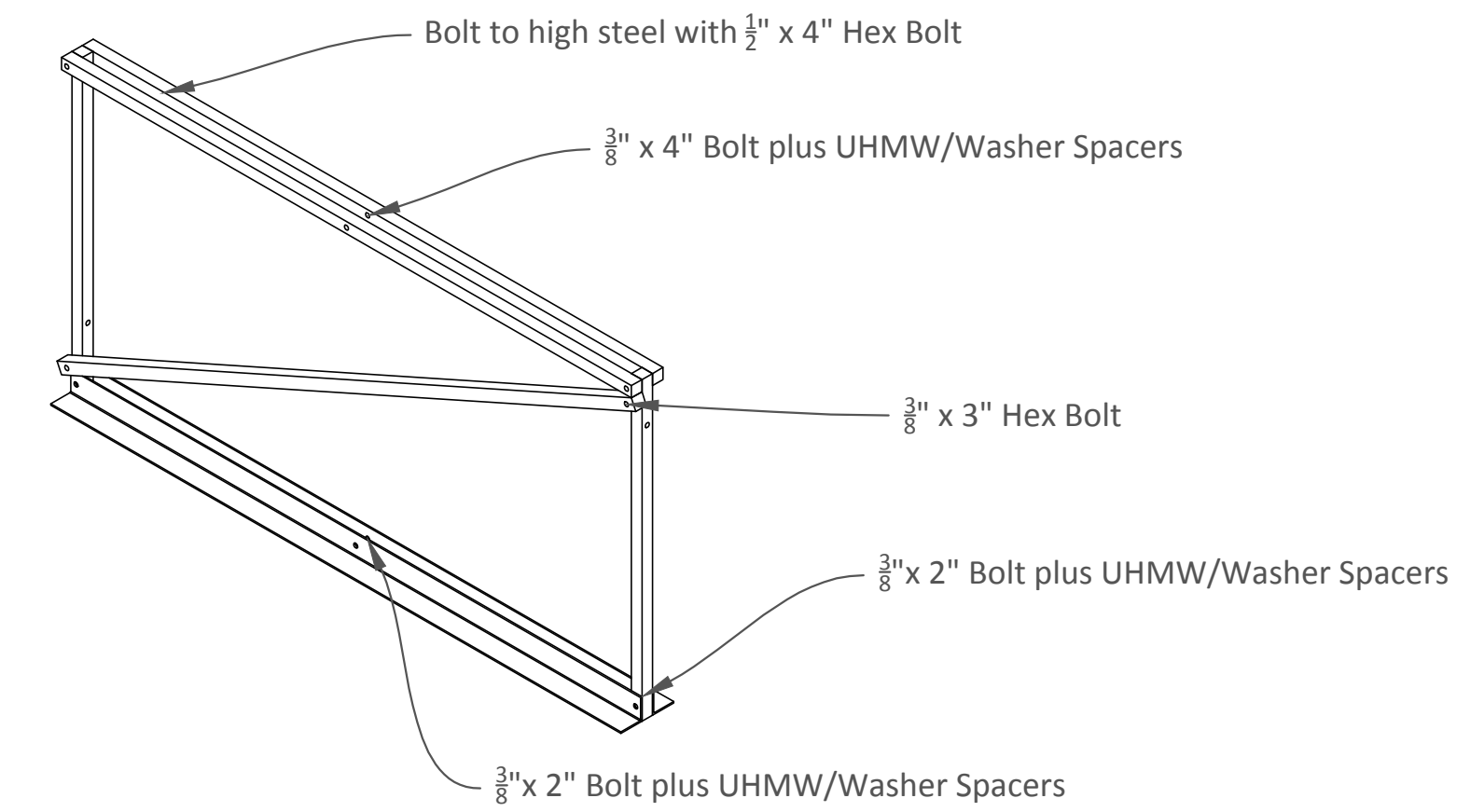


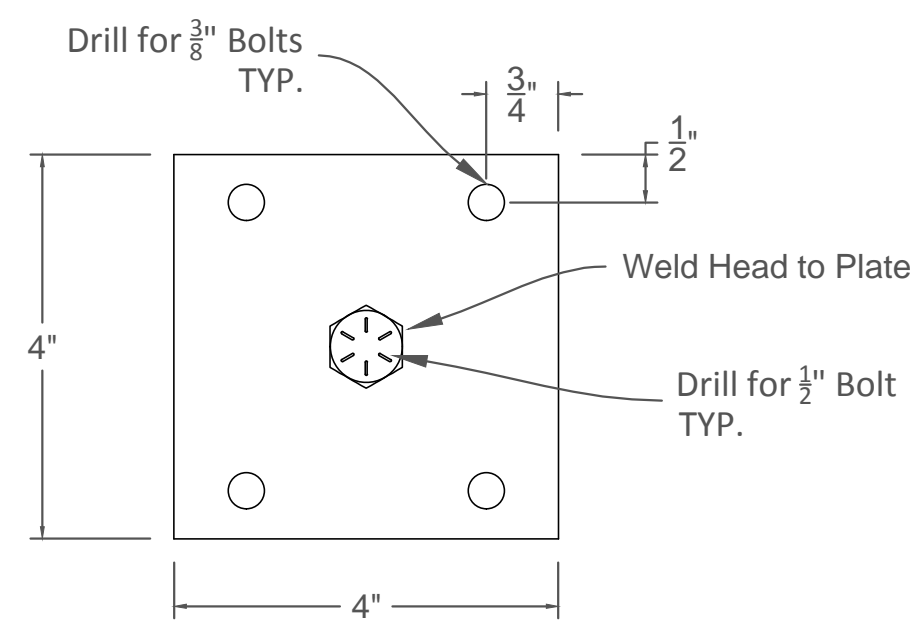
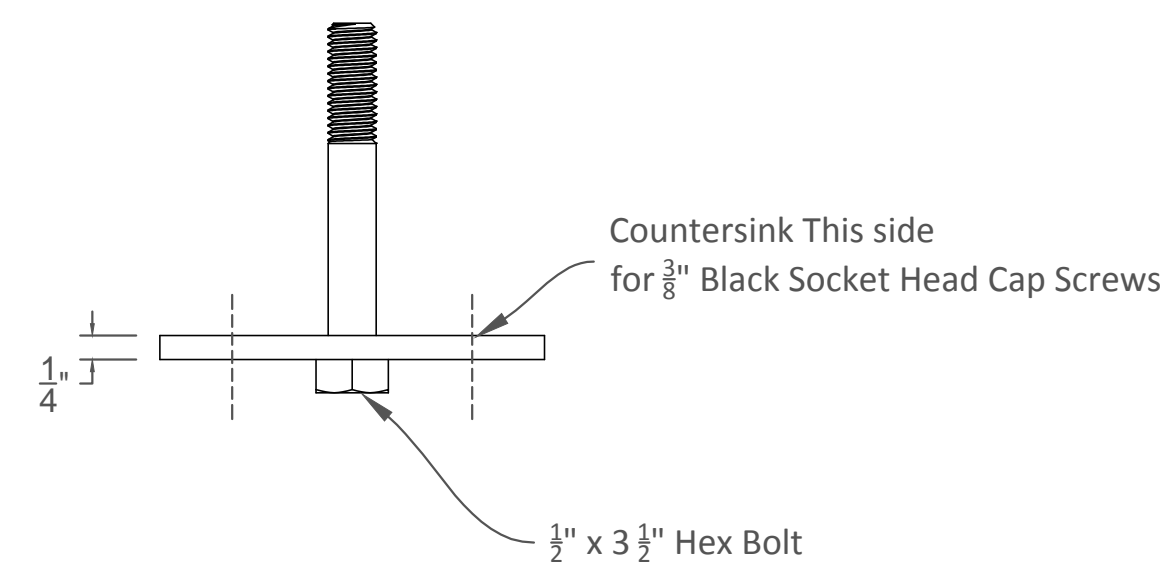
1
S10 Loft Block Frame- Scale: 1" = 1'-0"



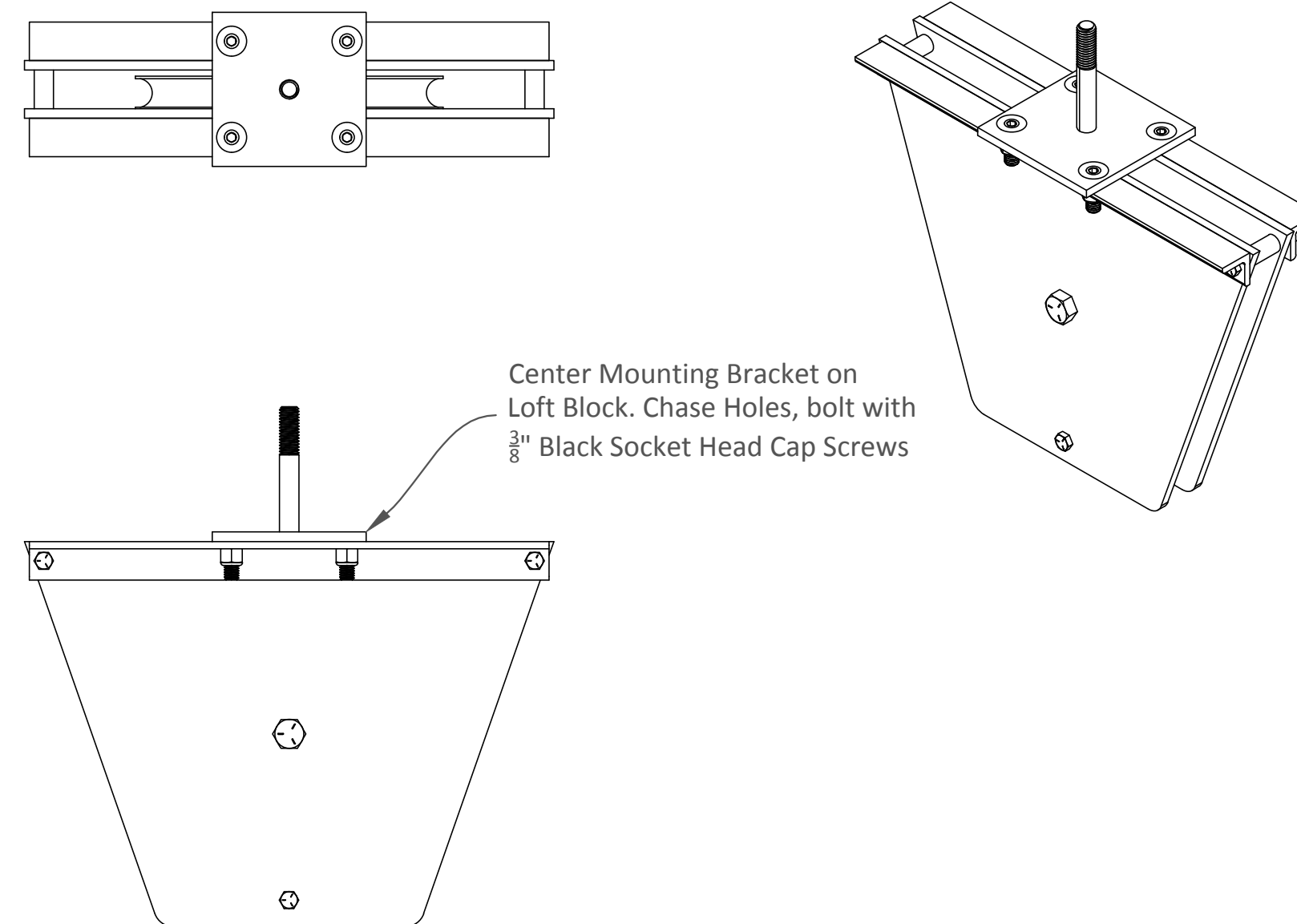
2
S10 Loft Block Frame- Scale: 1" = 1'-0"
Build 4 from 1x1 Box Tube and 2x2x1/8" Angle Iron.
Drill holes and bolt with 3/8" Hex Bolts and Nyloks.



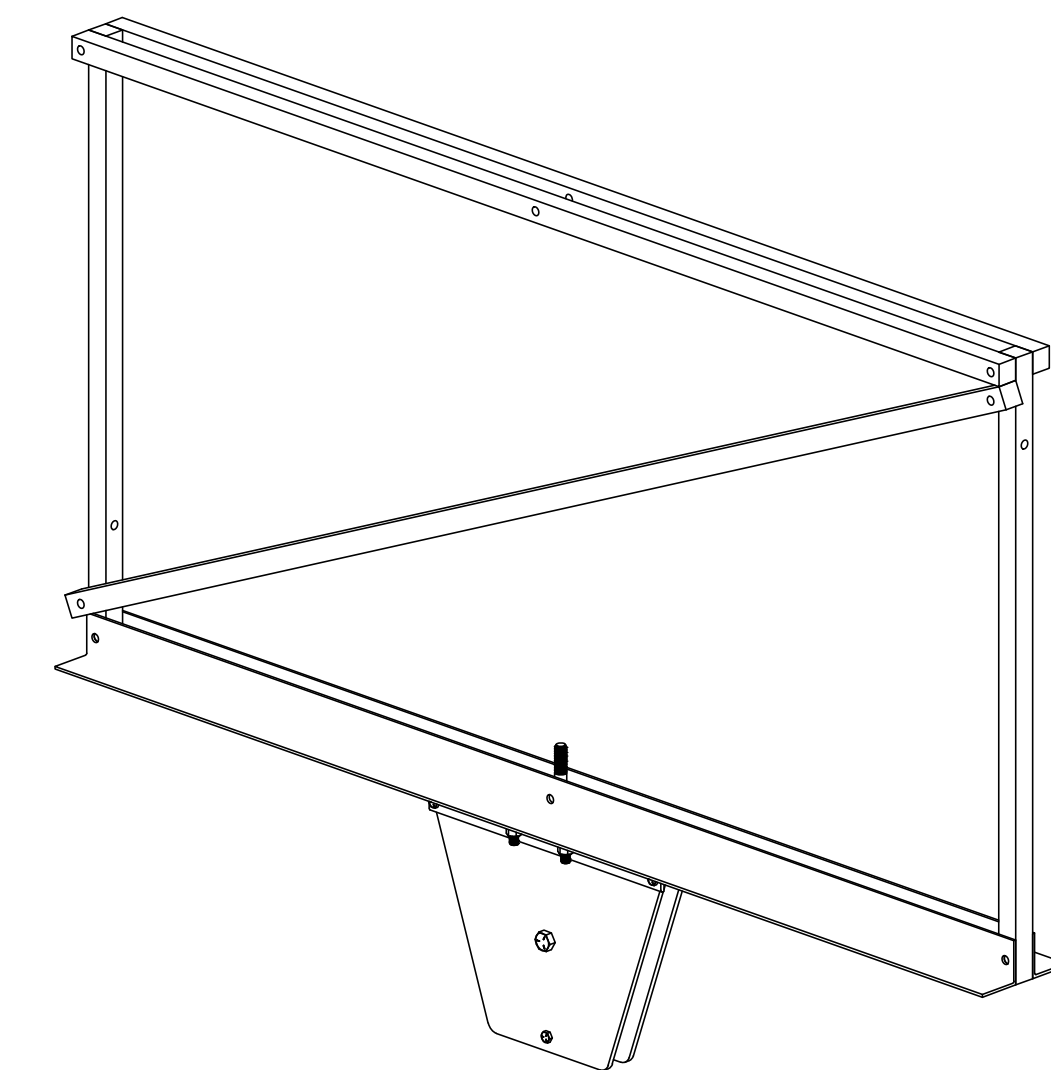
3
S10 Loft Block Frame ISO- Scale: 1" = 1'-0"



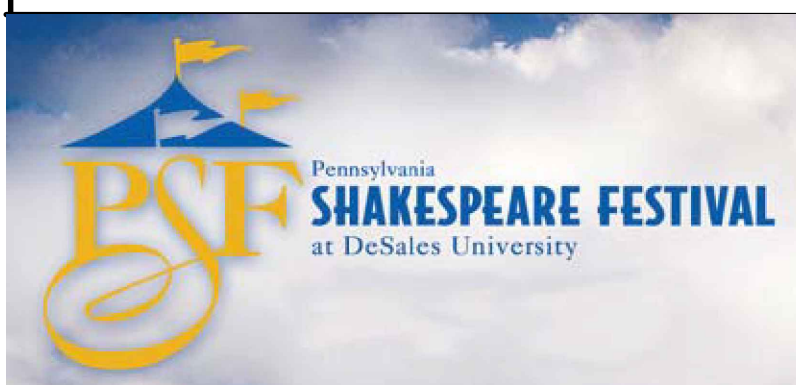
4
S10 Loft Block Bracket- Scale: 3" = 1'-0"
Build 4 from 1/4" x 4" Plate Steel.
Drill Holes, countersink perimeter holes for 3/8" Socket head cap screws, weld 1/2" x 3 1/2" Bolt at center.



5
S10 Loft Block Assembly- Scale: 3" = 1'-0"
Bolt bracket center on loft block rails. Use Nyloks.



All hardware is Grade 8 unless noted.



Little Mermaid

Plate Name: Swing Rigging Frames

Director: Taibi Magar

Scenic Designer: Steve TenEyck

Technical Director: Aaron Mayer

Drawn By: A. Mayer

Date: 5/18/2016

Rev:

Scale: As Noted

Plate:

S10