

DELTA BN® MODULE

COMPRESSED FOLDED FIBER MODULES FOR CORNERS & TRANSITIONS

Delta BN® Modules have the highest insulating value achievable in a ceramic fiber lining. Each module is comprised of folded blanket under compression to insure a tight seal and a “spring-back” action not found in typical wallpaper linings.

Noted features of a BN® Module lining are:

- Fast & Easy installation.
- Low heat storage and fuel costs
- Self-Supporting internal hardware reduces structural steelwork vs. castable or brick linings.
- Thermal shock resistance speeds up heat ups and cool downs for quick turn-around times.
- State-of-the-Art SlipLine™ Hardware provides easy installation in tight areas.
- No gaps between transitions or corners.
- Manufactured in the USA with Unifrax Blanket

Typical Applications for BN® Modules are:

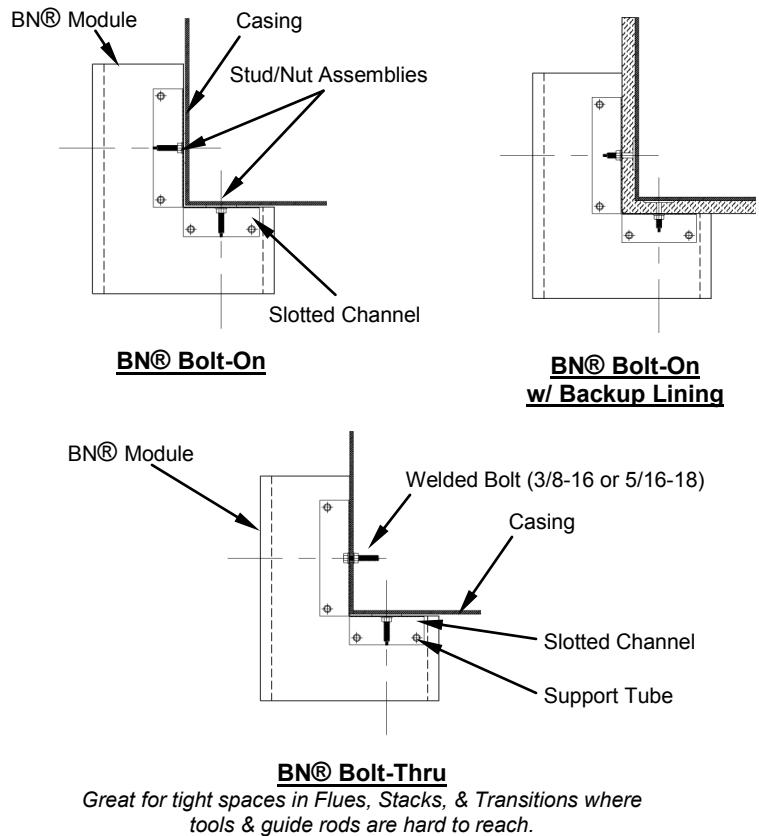
- Stress Relieving Furnaces
- Annealing Furnaces
- Car Bottom & Heat Treating Furnaces
- Process Heaters
- Reheat Furnaces
- Kiln & Boiler Linings
- Incineration Equipment
- Stack Linings
- Forge Furnaces
- Arch Transitions
- Door Jambs & Corners

Size & Densities Available

- 8, 9.3, 10.7, 12 (Lbs/Ft³)
- Standard Sizes range from 24” x 24” to 12” x 12” in thicknesses from 4” to over 12”
- Custom sized, pre-cut modules, & special bolt locations are also available for a seamless installation.
- BN™ Modules are also available in a cut hot face “edge grain” style.



Typical BN™ Installation Methods



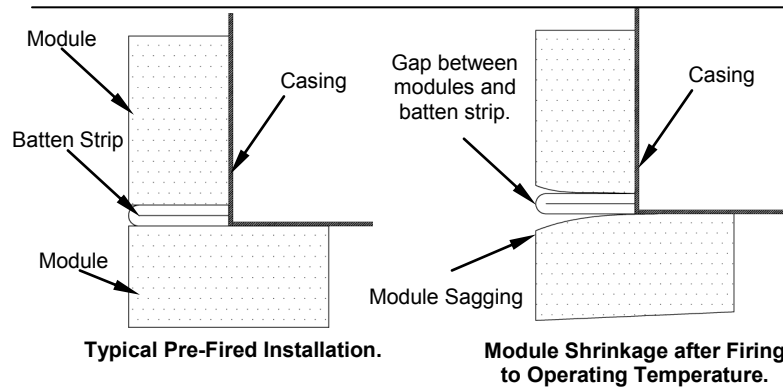
Corporate Office:

Mailing Address:

DELTA BN® MODULE

COMPRESSED FOLDED FIBER MODULES FOR CORNERS & TRANSITIONS

Drawbacks of Conventional Bull Nose Installations



Typical Product Parameters

Grade (Recommended Operating Temperature)

Chemical Composition	1800°F (1800°F)	2300°F (2150°F)	2600°F (2450°F)
Al ₂ O ₃	31-35%	43-47%	29-31%
SiO ₂	50-54%	53-57%	53-55%
ZrO ₂	5%	—	15-17%
Fe ₂ O ₃	1.3%	Trace	—
TiO ₂	1.7%	Trace	—
MgO	*0.5%	—	—
CaO	≤ 7.5%	—	—
Na ₂ O ₃	—	< 0.5%	—
Alkali	—	0.05%	—
Leachable Chlorides	—	< 10 ppm	< 10 ppm
Other Inorganics	—	0.85%	—
*MgO and other trace elements			

Corporate Office:

Mailing Address: