

Billets & Blades



**John Poythress wins the coveted
Judges Award at the
19th Annual Atlanta Area Knife Show
sponsored by the Flint River Knife Club**

**12th Annual Spring Meeting
of the
NCCCKG
April 24 –25, 2004
Troy, NC**

**An event for the entire family
and celebration of the NCCCKG
on it's 12th anniversary.
See pages 03 and 05 for more.**

**The Official Publication of
The North Carolina Custom
Knifemakers' Guild**

April 2004

Dedicated to the Art & Craft of Custom Knifemaking

Billets & Blades

NORTH
CAROLINA
CUSTOM
KNIFEMAKER'S
GUILD

Billets and Blades is the official publication of the North Carolina Custom Knifemakers' Guild. It is compiled and published in four issues annually with two additional special publication dates possible each year. Compiled, published, and distributed by The Knifemakers' Guild.

The North Carolina Custom Knifemakers' Guild was formed to meet the needs of a growing body of custom knifemakers in the southeastern United States. The purpose of this newsletter is to serve as a medium of exchange for the members of the NCCKG.

Billets and Blades is copyrighted in its entirety by the North Carolina Custom Knifemakers' Guild. Permission to quote small noncontiguous passages is freely given as long as appropriate citations are used. Permission to reprint, in whole or in part, must be requested from the Guild. Contact the editors.

Knife making and related endeavors are inherently dangerous crafts or occupations. The material contained in this newsletter is for information only, and is not intended to provide instruction. Therefore, the North Carolina Custom Knifemakers' Guild, its officers and editors specifically disclaim any and all responsibility for damage or injury that may occur as a result of the use of any information that is contained in this newsletter.

Advertising Policy: The NCCKG accepts no paid advertising as a matter of policy. From time to time, advertisements may appear that are deemed by the officers to be in the best interest of the Guild. Space for advertisement is offered free to Guild members who wish to promote a service or offer specific items for sale. The officers and editor reserve the right to edit advertisements for brevity. Members Only: Please submit ads to the editors at the address shown at the right.

Guild Officers and Directors

President: and Director:	Tommy McNabb P.O. Box 327 Bethania, NC. 27010 (336) 924_6053
Vice President:	Andrew McLurkin 2112 Windy Woods Dr. Raleigh, NC 27607 (919) 834-4693
Secretary:	Mrs. Norman (Marge) Gervais 51 Island Road Hardy, VA 24101 (540) 721-3275
Treasurer:	Tony Kelly 348 Bell Rd. Kinston, NC. 28501 (252) 527_2130
Director:	Barry Jones 221 North Avenue Danville, VA 24540 (804) 793-5282
Editors:	Mrs. John (Joan) Poythress 625 Freedom Street Swainsboro, GA. 30401 (478) 237-9478
Webmaster:	Charlie Monroe 12 Drakesway Ct. Durham, NC 27713 ccmknives@hotmail.com

Please address correspondence about this newsletter to the President or the Editor at the above addresses. Please direct requests for information about the North Carolina Custom Knifemakers' Guild to the President, Tommy McNabb, at the above address.

Profile In Steel

There are many people we can name who have inspired us to begin our craft of knifemaking. But right out of our rustic Alaska, Tommy Johnson credits the owner of a small trading post between Anchorage and Humer Alaska as his inspiration. This was back in 1973 or 1974. For years after this Tommy wanted to try his hand at it. As the vision remained he finally had his chance in 1980.

Tommy worked long and hard as he constructed his first knife from a piece of chainsaw bar which he ground on a 4 x 36 belt sander. Though it seemed to take forever, he was proud enough of this piece to give it as a gift. Many time he wished he could get this first knife back.

Tommy did not make another knife for several years until he learned about easier materials and tools to work with. He gives credit to the NCKKG and the membership saying "I do not think I would be doing it if it was not for the Guild and many of the members". He has also taken the folder class Darryl Ralph taught at Montgomery Community College. He has made his first folder now and is anxious to try another..

Tommy 's metals of choice are ATS34 along with some 440C & 01. As for the handles he uses any material that stirs his interest.

Tommy and his wife, Gail, have a daughter, Julie. When he is not busy with his work and knifemaking, he enjoys being a part of the Community Theater.



Meet Emmie Elizabeth Bowen. John & I are the very proud grandparents. She was welcomed home by her Dad, Mom and big brother, Avery.

Demonstration Schedule April 24 & 25, 2004 Montgomery Community College Troy, NC

- Saturday:**
- 8:30am Board Meeting
 - 9:00am Guild Meeting
 - 10:00am Handle Carving – Ed Halligan

 - 12:30pm Lunch on Your Own (several local restaurants to choose from)

 - 1:30pm Iron In The Hat
 - 2:00pm Cutting Competition – Tim Scholl will be judging our cutting competition again this year. Bring a knife of your own construction that includes a secure handle and thong for safety.

 - 4:00pm Departure for Pig Picking/BBQ Dinner at the local lake. Food and drinks will be provided as well as boat rides on the lake. Enjoy!

Sunday:

 - 9:00am Scrimshaw – Ed Halligan will demonstrate techniques and then provide the supplies necessary for participants to try their hand.

 - 1:00pm Departure

Directions to Montgomery Community College

From Winston-Salem:
Take Hwy. 52 South to Lexington; then take Hwy.64 East to Ashboro; from Ashboro take 220 South to Bisco Exit; turn right & go approximately 9 miles until you see Montgomery Community College sign on the right; turn right at the sign, and go approximately 1/2 mile to the college entrance. Look for marked parking.

From Fayetteville:
Take Hwy. 24 & 27 West through Bisco, go approximately 9 miles until you see Montgomery Community College sign on the right; turn right at

the sign, and go approximately 1/2 mile to the college entrance. Look for marked parking.

From Charlotte:

Take Hwy 24 & 27 East through Troy, go approximately 2 miles until you see the Montgomery Community College sign. Turn left and go approximately 1/2 mile to the college entrance. Look for marked parking.

Area Hotel Accomodations

Days Inn Biscoe, NC 910-428-2525	Comfort Inn Albemarle, NC 704-983-6990
Holiday Inn Express Albemarle, NC 904-986-2100	Sleep Inn Albemarle, NC 704-983-2770

Uwharrie Mountain Lodge
Troy, NC

**On The Cover
Poythress Wins In Atlanta**

John Poythress won the coveted "Judges Award" February 28 at the 19th Annual Greater Atlanta Knife Show sponsored by the Flint River Knife Club.



The award was given for the craftsmanship in the Large Gentleman's Liner Lock shown on the front of this issue.

The overall length of the knife opened is 8 1/4". The closed length of the knife is 4 5/6". The blade length is 3 1/2". The blade is constructed from Mike Norris Stainless Damascus. The bolsters are Devin Thomas Spirograph Damascus. The handle material is ivory. The titanium liners are anodized purple and gold. The bolsters are heat blued. There is hand file work inside and out.

Mill For Sale: For those who have a MSC Catalogue the mill is on page #4441. The one I have is a 2HP single phase 110V. 12 speed, beltdriven.

The table is 8.5"X28.5. Swing is 163/8", Quill diameter is 3", Spindle/Quill travel - 5". I have a complete set of R8 collets, 2 vises, one magnetic, one precision. There is no auto feed, but it is available, on all X,Y,Z parameters. It is mounted on a stand. Price is \$750.00 for everything mentioned above. The buyer will have to move. The unit weight is about 980lb. I used a Engine hoist to assemble in my shop.

I also have a Harbor Freight Mini Lathe for sale. It is new and I have had it for 2 yrs but never used it. Variable speed. Call Bob Rosenfeld at 770-867-2647 for additional information.

The Design Crew



We had several very good designs submitted for consideration for the construction of the SouthEastern Custom Knife Show's Show Knife. We began with basic information that the knife would be made from Ron Newton Mosaic Damascus and would be a Sheffield Bowie style design. All of the designs submitted were so good that the group decided to include attributes from each to make this truly a NCKKG creation.

The construction of the knife is well underway and should be completed in time to show at the April meeting. Make your list now of folks that you will want to give the opportunity to purchase tickets for a chance to win this knife. It will truly be a very special one-of-a-kind piece for a very lucky person.

Knifemaking Courses Set for College

Course: Custom Folding Knives

Dates: May 20-23, 2004

Cost: \$315

Instructor: Ed Van Hoy

Description: This class will teach students how to make a custom folding knife. You will learn how to design, grind parts and make handles for the folding knife that you will finish in class.

Course: Grinding Knife Blades

Dates: June 18-20, 2004

Cost: \$240

Instructor: Ed Halligan

Description: Students will learn fixed blade design and how to hollow grind and flat grind knife blades. Ed will teach students how to heat treat, make bolsters, guards, and handles. He will also demonstrate handle finishing and carving.

Course: Metal Engraving

Dates: July 2-11, 2004

Cost: \$100

Instructor: Howard Peacock

Description: Contact Montgomery Community College (910-576-6222) for more information.

Course: Automatic Folders

Dates: August 5-8, 2004

Cost: \$315

Instructor: Ron Newton

Description: Contact Montgomery Community College (910-576-6222) for more information.

Course: Basic Knife Making

Dates: August 19-22, 2004

Cost: \$315

Instructor: Tommy McNabb

Description: In this course the students will learn knife making by designing and making a knife themselves under the guidance of the instructor. Each student will grind, heat-treat and finish a knife using the stock removal method of knifemaking. This class is for beginners to intermediates that want to perfect their knifemaking talents.

Course: Forged Blades

Dates: September 16-19, 2004

Cost: \$315

Instructor: Dr. James Batson

Description: Contact Montgomery Community College (910-576-6222) for more information.

Course: Powder Damascus Steel

Dates: October 15-17, 2004

Cost: \$240

Instructor: Darrel Ralph

Description: Have you ever wondered how the modern mosaic Damascus is made? Enter the exciting new field of making abstract or intricate patterns in steel with metallic powders. You will make powder Damascus steel with tools found in a blacksmith or bladesmith shop. We will deal with three shades of color black, gray and white. These techniques may be incorporated into jewelry, knife blades and knife fittings.

Points to Ponder:

The April meeting of the NCKKG is going to be one very special time. Many things, both important and fun, will be taking place.

First on the list will be the selecting of a new president, Vice-President, and Treasurer. Tommy's tenure as President will expire. He will be stepping down as President providing the opportunity for new leadership to rise within the Guild. Andrew's position as Vice-President is also up for election. The Vice-President is responsible for setting up the demos for each meeting. Andrew has done a great job; but many of you have good ideas, contacts, and varied interests which would be a great asset to our Board and Guild. Tony has said that he is willing to continue as Treasurer, but he also would like to see everyone take their place of service in the Guild.

The future for the Guild is wide open. We need and want everyone to have input in the direction it takes.

Saturday night will be a time of fun, fellowship and 12th Anniversary Celebration with a catered picnic, swimming, & boat rides on the lake for members, family, and guests. Please come and join us for this. It will be fun.

Safety for Women

A group of rapists and date rapists in prison were interviewed on what they look for in a potential victim and here are some interesting facts:

- 1) The first thing men look for in a potential victim is hairstyle. They are most likely to go after a woman with a ponytail, bun, braid or other hairstyle that can easily be grabbed. They are also likely to go after a woman with long hair. Women with short hair are not common targets.
- 2) The second thing men look for is clothing. They will look for women whose clothing is easy to remove quickly. Many of them carry scissors around to cut clothing.
- 3) They also look for women on their cell phone, searching through their purse or doing other activities while walking because they are off guard and can be easily overpowered.
- 4) The time of day men are most likely to attack and rape a woman is in the early morning, between 5 and 8:30 a.m.
- 5) The number one place women are abducted from/attacked at is grocery store parking lots. Number two is office parking lots/garages. Number three is public restrooms.
- 6) The thing about these men is that they are looking to grab a woman and quickly move her to a second location where they don't have to worry about getting caught.
- 7) Only 2% said they carried weapons because rape carries a 3-5 year sentence, but rape with a weapon is 15-20 years.
- 8) If you put up any kind of a fight at all, they get discouraged because it only takes a minute or two for them to realize that going after you is not worth it because it will be time-consuming.
- 9) These men said they would not pick on women who have umbrellas, or other similar objects that can be used from a distance, in their hands. Keys are not a deterrent because you have to get really close to the attacker to use them as a weapon. So, the idea is to convince these guys you're not worth it.
- 10) Several defense mechanisms he taught us are: If someone is following behind you on a street or in a garage or with you in an elevator or stairwell, look them in the face and ask them a ques-

tion, like what time is it, or make general small talk, "I can't believe it is so cold out here," or "we are in for a bad winter." Now you've seen their face and could identify them in a lineup, you lose appeal as a target.

11) If someone is coming toward you, hold out your hands in front of you and yell Stop or Stay back! Most of the rapists this man talked to said they'd leave a woman alone if she yelled or showed that she would not be afraid to fight back. Again, they are looking for an EASY target.

12) If you carry pepper spray (this instructor was a huge advocate of it and carries it with him wherever he goes,) yelling I HAVE PEPPER SPRAY and holding it out will be a deterrent.

13) If someone grabs you, you can't beat them with strength but you can by outsmarting them. If you are grabbed around the waist from behind, pinch the attacker either under the arm between the elbow and armpit or in the upper inner thigh -- HARD. One woman in a class this guy taught told him she used the underarm pinch on a guy who was trying to date rape her and was so upset she broke through the skin and tore out muscle strands - the guy needed stitches. Try pinching yourself in those places as hard as you can stand it; it hurts.

14) After the initial hit, always go for the groin.. I know from a particularly unfortunate experience that if you slap a guy's parts it is extremely painful. You might think that you'll anger the guy and make him want to hurt you more, but the thing these rapists told our instructor is that they want a woman who will not cause a lot of trouble. Start causing trouble, and he's out of there.

15) When the guy puts his hands up to you, grab his first two fingers and bend them back as far as possible with as much pressure pushing down on them as possible. The instructor did it to me without using much pressure, and I ended up on my knees and both knuckles cracked audibly.

16) Of course the things we always hear still apply. Always be aware of your surroundings, take someone with you if you can and if you see any odd behavior, don't dismiss it, go with your instincts. You may feel a little silly at the time, but you'd feel much worse if the guy really was trouble.

Why does a slight tax increase cost you two hundred dollars and a substantial tax cut saves you thirty cents?

Gas Forge Construction

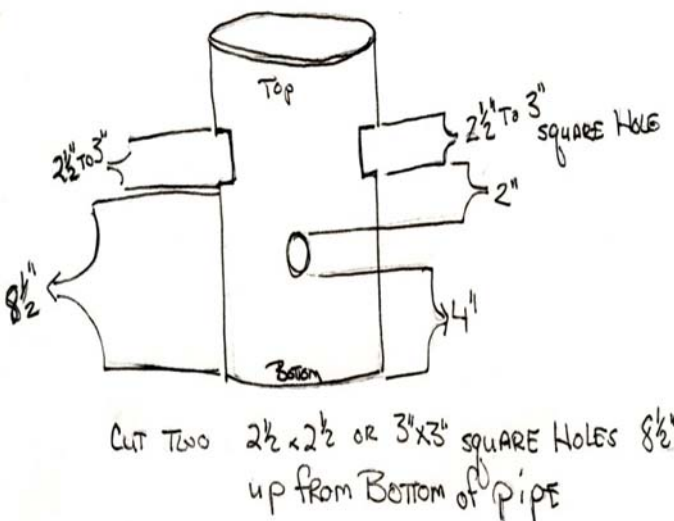
Tommy McNabb

(At the Jan 2004 meeting of the NCKKG, Tommy McNabb demonstrated how to construct a Gas Forge. The demonstration was detailed by Bill Bisher. Thanks Bill for sending this for publication here..)

Materials Needed:

- 1-15" piece of 10" diameter #40 schedule black iron pipe, 1/8" thick wall.
- 2- 6" nipples 1/4" diameter, #40 schedule black iron pipe.
- 1- 90° 1 1/4" elbow, black iron.
- 1- bell reducer 1/4" diameter.
- 1- 4" nipple 1/4" diameter.
- 1- cut off valve for 1/4" fittings.
- 2- square plates 12" x 12" x 1/8" for top and bottom.
- 2- 1-1/2" angle iron 1/8" thick 4 1/2" long.
- 1- piece of Kalewool/Insawool/etc. 2" thick. Large enough to line inside of pipe and to cover bottom and top. Rated at 2200°.
- 1- squirrel cage blower 100 cfm.
- 1- flange to fit blower and 1 1/4" pipe.
- Pipe Dope-high temperature.
- Satanite Refractory Clay.

The first step is to cut holes in the 10" pipe.

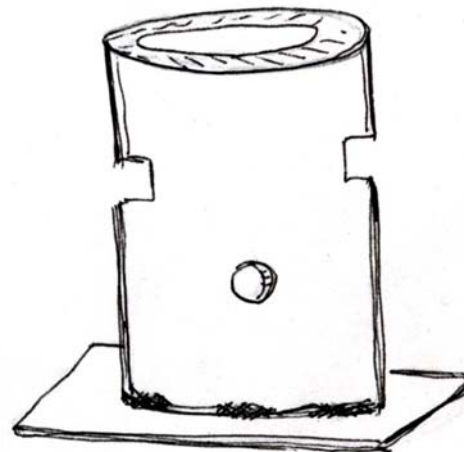


Cut one round hole big enough to accept large

enough the large end of the bell reducer; 4" up from the bottom. The distance between the round hole and the square holes is 2" (Top edge to bottom edge).

Clean up the edges of the holes with angle grinder.

Now weld one of the square plates to the bottom of the pipe. After the pipe has cooled enough to handle cut a bottom from insulation and place it in the pipe. Line the inside of the pipe with insulation and mark holes for the square opening and the burner.



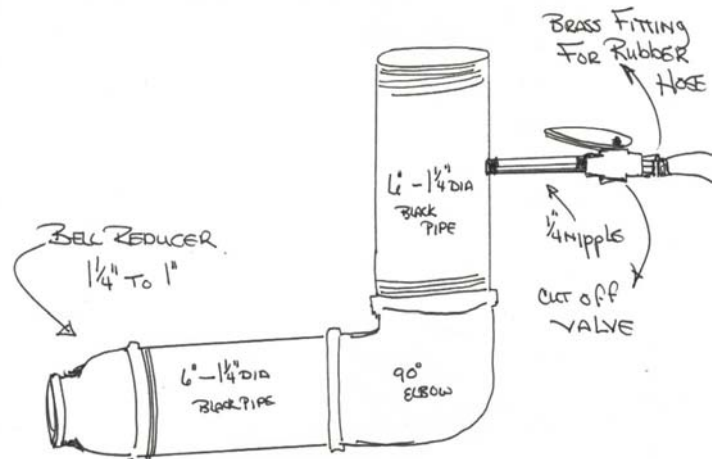
Cut out hole and replace the insulation.

Put a thin coat of refractory on the insulation. If you spray a light coat of water on the insulation first, this will work better.

Now cut a top out of the insulation and put it into place. Weld the top plate onto the pipe.

Put the burner together while the refractory is drying.

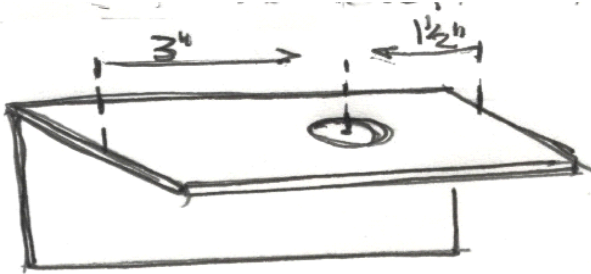
Drill and tap a hole in one of the 6 x 1 1/4" nipples for the 1/4" nipple.



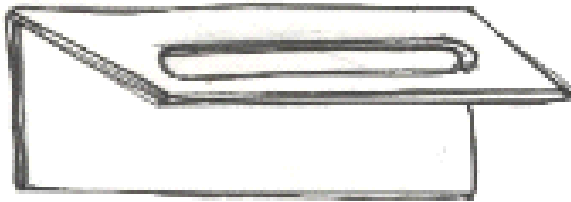
Above is the burner assembly.

Dope and put 1/4" nipple in place. Place both of the 1/ 1/4" nipples into the elbow. Then attach the bell reducer and shut-off valve

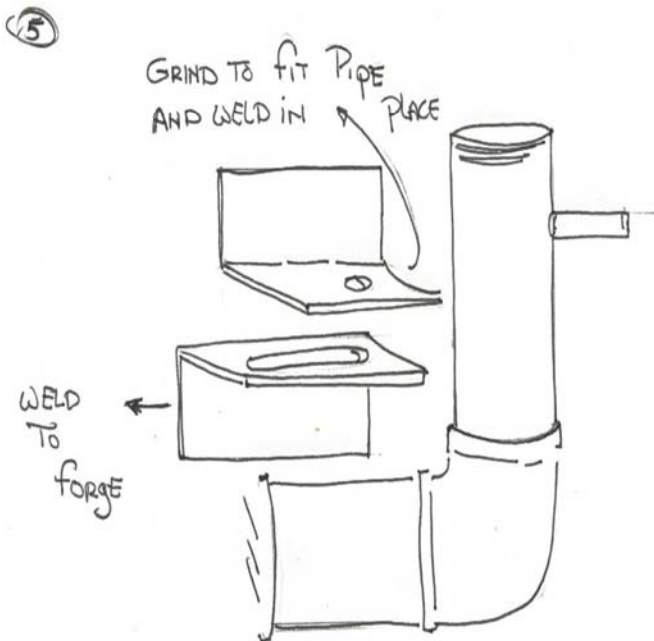
To make the burner bracket, drill a hole for a 3/8" bolt into one of the 1 1/2" angle iron.



Then slot the second piece of angle iron to fit the 3/8" bolt.



Grind an arch in angle iron to fit 1/1/4" pipe and



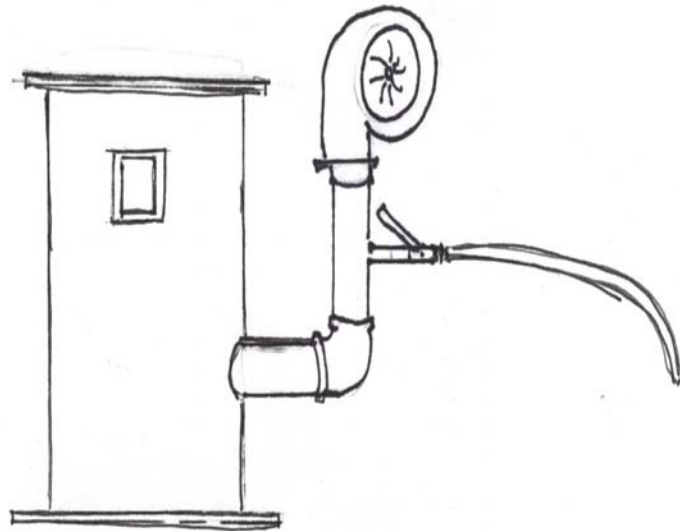
weld to the burner's upright pipe. Bolt two pieces of angle iron together and place the burner into the hole on the fore. Mark the position of the angle iron, unbolt the two pieces and weld the second angle iron to the forge.

Now you can attach the burner to the forge.

Put the flange on the blower and attach it to the burner. Dope and put brass fittings on the cut off valve. Attach rubber propane gas hose and hook to the gas source. You are now ready to light it off.

WORD OF CAUTION: Always turn on the air (blower) before the gas and light it with a piece of paper or torch. When shutting down the forge, turn off the gas and let the fan run for approximately 30 minutes to cool the forge down.

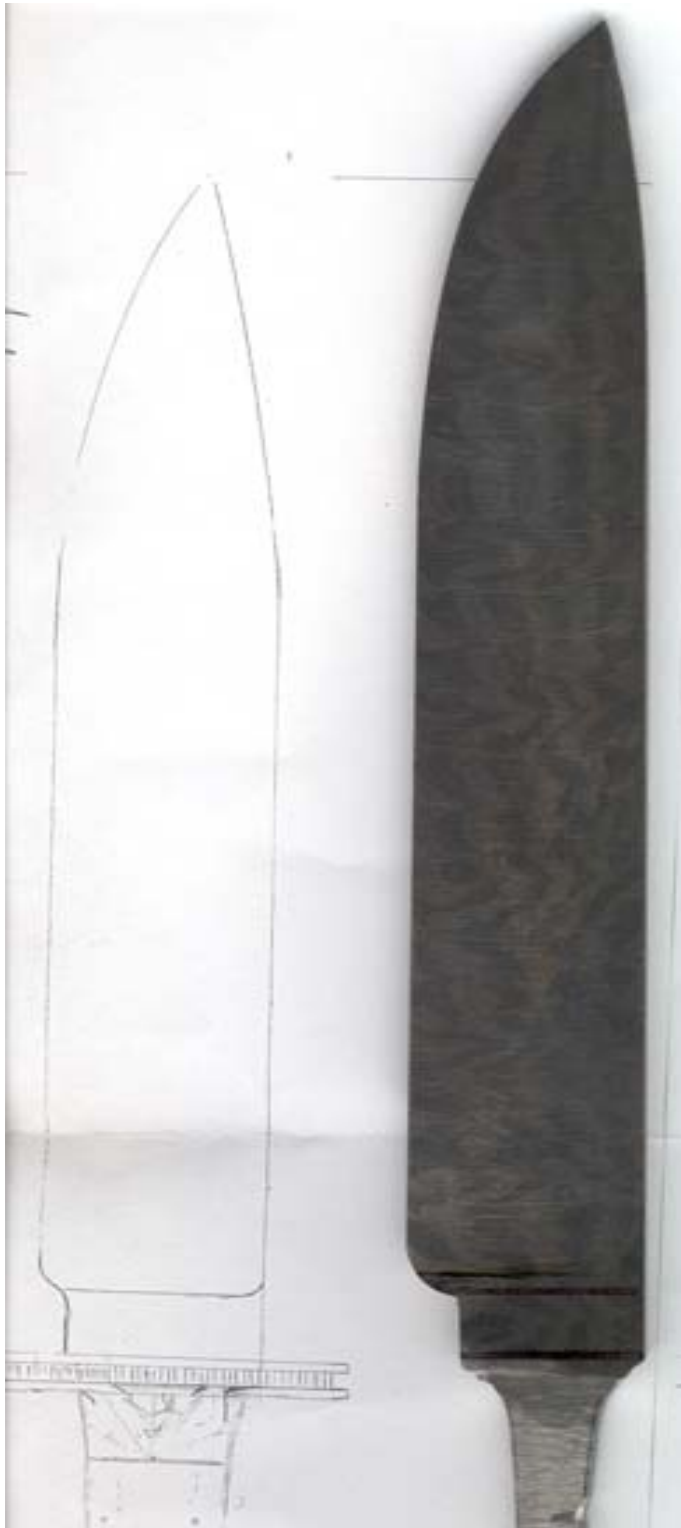
REMEMBER PROPANE IS HIGHLY EXPLOSIVE. Please use caution when lighting the forge. If it is not done correctly you can have a bomb on your hands.



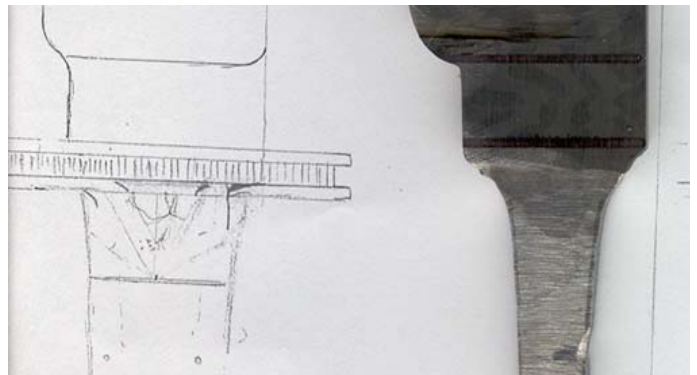
The finished forge should look close to the drawing above.

Note: The slot in the bracket is to adjust the burner depth to get the correct lame in the forge.

For the 10th Annual SouthEastern Custom Knife Show, the NCKKG Show Knife will be a knife totally designed and crafted by NCKKG members. Ron Newton forged the Mosaic Damascus billet. John Poythress is crafting the Bowie Box Handle. Andrew McLurkin created the guard. Barry & Phillip Jones will grind the blade. Jesse Houser will do the embellishing. Tommy McNabb, Wayne Whitley, and Tim Scholl will complete the fit and finish. Raffle tickets will be sold by the NCKKG members and at the door of the show. Get your tickets to sale early. Any of your friends and acquaintances would be honored to own this.



The overall length of this piece will be approximately 14" and will have ivory scales. The handle length is 4 5/8". The blade length is 9". The bolster and guard is nickel silver.



In the 60's people took acid to make the world weird. Now the world is weird and people take Prozac to make it normal.

Never take life seriously. Nobody gets out alive anyway.

Health is merely the slowest possible rate at which one can die.

Health nuts are going to feel stupid someday, lying in hospitals dying of nothing.

AND THE # 1 THOUGHT FOR THE DAY:

You read about all these Terrorists most of them came here legally, but they hung around on these expired visas, some for as long as 10-15 years. Now, compare that to Blockbuster; you are two days late with a video and those people are all over you. I think we should put Blockbuster in charge of immigration



Alabama Forge Council



April 2-4, 2004

The Sixteenth Annual Batson Bladesmithing Symposium & Knife Show

at

TANNEHILL IRONWORKS at Exit 100 off I-20, 11 miles West of BESSEMER, ALABAMA

featuring

BLADE FORGING, GRINDING & DESIGN-----JAMES CROWELL
OLD WORLD BLADE & AX FORGING-----JOSEPH SZILASKI
BUCKSKINNER'S KNIFE & TOMMAHAWK FORGING----- JOSEPH KEESLAR
THE INTRICACIES OF BLADE FORGING -----CHUCK PATRICK
FORGING INTEGRAL BLADES-----DON FOGG
FORGING DAMASCUS -----STEVE SCHWARZER
HAND AX FORGINGS-----LEE REEVES
CUTTING COMPETITION-----JERRY FISK
OLD TIMEY BOWIE KNIVES-----MARK ZALESKY
ABS KNIFE JUDGING & MARKET-----B R HUGHES
LINER LOCKS & AUTOMATICS-----MELVIN PARDUE
SLIP JOINTS & LOCK BACK FOLDERS -----PETE PETERSON
JIGS, FIXTURES & PIQUE WORK -----KEN DURHAM
HANDLE INLAYS & CASTING KNIFE FITTINGS-----ALEX DANIELS
ENGRAVING -----BILLY BATES
BASIC ENGRAVING TOOLS & GOLD WIRE INLAY----- JESSE HOUSER
HANDS-ON BLADESMITHING -----HARRY BROCK & GLYNN HOLMES
ORNAMENTAL JAPANESE FITTINGS-----WALLY HOSTETTER
LEARN TO SCRIMSHAW-----MARY BAILEY
RENDEZVOUS SHEATHS-----TOM STERNS
LEATHER SHEATHS-----KENNY ROWE
BADER GRINDERS-----DAN JOHNSON
AUCTION----- COLONEL TIM RYAN
TAIL GATE & KNIFE SUPPLY SALES

These artisans will demonstrate their craft and teach hands-on Mini-Seminars.

Bring examples of your work or collection for the **KNIFE SHOW & AUCTION**.

Plan to participate in the **CUTTING COMPETITION**.

Bring a knife for the **RAILROAD SPIKE KNIFE CONTEST**.

The Sixteenth Annual Batson Bladesmithing Symposium & Knife Show

AGENDA

Thursday, April 1, 2004

1 to 9 pm.....Check-in
5 to 7 pm.....Demonstrators Dinner

Friday, April 2, 2004

7-8 am.....Check-in
8-12 noon.....Demonstrations
Lunch
1-5 pm.....Hands-on Seminars
7-9 pm.....Cutting Competition

Saturday, April 3, 2004

7-8 am.....Check-in
8-12 noon.....Demonstrations
Lunch
1-2 pm.....Demonstrations
2-4:30 pm.....Knife Show & Collectors Exhibition
4:30-7 pm.....Auction

Sunday, April 4, 2004

8-12 noon.....Demonstrations
Departure

TANNEHILL IRONWORKS

An Alabama State Historical Park consists of an Iron & Steel Museum, Tannehill Furnaces, Craft Cabins, 195 improved campsites, Gristmill, cotton gin, 45 historical buildings, etc-

DIRECTIONS

Tannehill Ironworks is located at McCalla, Alabama about 11 miles west of Bessemer. From I-59 & I-20, take exit 100 and follow signs to Tannehill (about 2 miles). From I-459 take exit 1 and follow signs (about 7 miles). <http://www.tannehill.org>

BY AIR

Fly into the Birmingham Jetport which is located 40 miles from Tannehill. Transportation can be provided. Request in advance from Judd Clem (256/232-2645).

BE AWARE!

No Alcoholic Beverages are allowed
at Tannehill Ironworks

PRE-REGISTRATION & ENTRANCE FEE

The Symposium fee is \$125.00 per person. **Please pre-register.** Send your name, address, phone number along with a check or money order made out to Alabama Forge Council to Judd Clem, 111 Yorkshire Dr, Athens, AL 35613 (256/232-2645), Ajc665@aol.com.

Master Card & VISA are accepted. Send or call in your name, address, phone number, card number, expiration date and name on card. Email: Ajc665@aol.com.

The entrance fee to Tannehill, a Historical State Park, is included. The knife show is free to the public. Your knife show table exhibit fee is included in the registration fee. Everyone is encouraged to show & sell their knives.

LODGING & ACCOMMODATIONS

FOOD

A snack bar, Sweet Shoppe & Country Store are in Tannehill.

CAMPING

Camping is available at Tannehill Ironworks near the Demonstration Area on Mill Creek. Improved (water & electricity) & Primitive camping. For reservations call 205/477-5711. Check in at Country store.

MOTELS

There are many motels & restaurants off I-459 and I-20/59 toward Bessemer and Birmingham.

Sleep Inn, 205/424-0000, \$53+tax for two double beds, 1259 Greenmor Drive @ Ala-52 at exit 6 off I-459 about 15 miles from Tannehill. Demonstrator's Motel.

Hampton Inn, 205/425-2010, \$59+tax for two double beds, 4910 Civic Lane @ exit 108 off I-20/59 about 11 miles from Tannehill.

Best Western, 205/481-1950, \$66+tax for two double beds, 5041 Academy Lane @ exit 108 off I-20/59 about 11 miles from Tannehill.

Jameson Inns, 205/428-3194, \$65+tax for two double beds, 5021 Academy Lane @ exit 108 off I-20/59 about 11 miles from Tannehill.

Calendar of Events

April 2004

Batson Bladesmithing Symposium & Knife Show: April 2-4, Tannehill Ironworks State Park, Bessemer, AL

NCCCKG Meeting: April 24-25, Montgomery Community College, Troy, NC

May 2004

Custom Folding Knives: May 20-23, Ed Van Hoy, Instructor, \$315.00, Montgomery Community College, Troy, NC.

June 2004

The Blade Show: June 4-6, Cobb Galleria, Atlanta, GA

Grinding Knife Blades Class: June 18-20, Ed Halligan, Instructor, \$240.00, Montgomery Community College, Troy, NC

July 2004

Metal Engraving Class: July 2-11, Howard Peacock, Instructor, \$100.00, Montgomery Community College, Troy, NC

NCCCKG Meeting: July 17 & 18, Norm Gervais' Shop, Hardy, VA

August 2004

Automatic Folders: Aug. 5-8, Ron Newton, Instructor, \$315.00, Montgomery Community College, Troy, NC

Basic Knife Making: Aug. 19-22, Tommy McNabb, Instructor, \$315.00, Montgomery Community College, Troy, NC

September 2004

10th Annual SouthEastern Custom Knife Show: Sept 11-12, Benton Convention Center, Winston-Salem, NC

Forged Blades: Sept. 16-19, Dr. James Batson, Instructor, \$315.00, Montgomery Community College, Troy, NC

October 2004

Powder Damascus Steel: Oct 15-17, Darrel Ralph, Instructor, \$240.00, Montgomery Community College, Troy, NC

(Directions and meeting details will be sent in the Newsletter preceding each meeting)

(Register for classes at Montgomery Community College; located in Troy, NC. Lodging is available close by.)

(Complete details on classes at the guild website at www.ncknifeguild.org)

MEMBERSHIP APPLICATION FORM

Date:		
Name:		
Address:		
City:	State:	Zip
Phone:		
Email:		
Website:		
Choose One:	New Member:	Renewal:
Choose One Membership Category:	Collector:	Student

Membership / Renewal fees are: \$50.00 per year

Collector membership fees are \$25.00 per year

Student memberships are \$10.00 per year

Please send this form with a check or money order to:

NC Custom Knifemaker's Guild

Attn: Tony Kelly

348 Bell Road

Kinston, NC 28504

<http://www.ncknifeguild.org>