

# LARAMIE

## 748 MARIE COURT

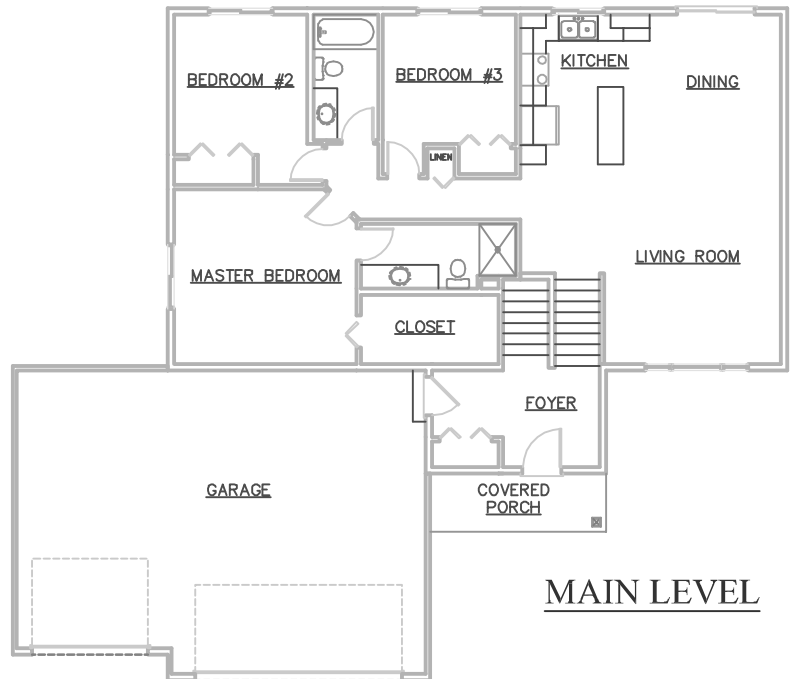
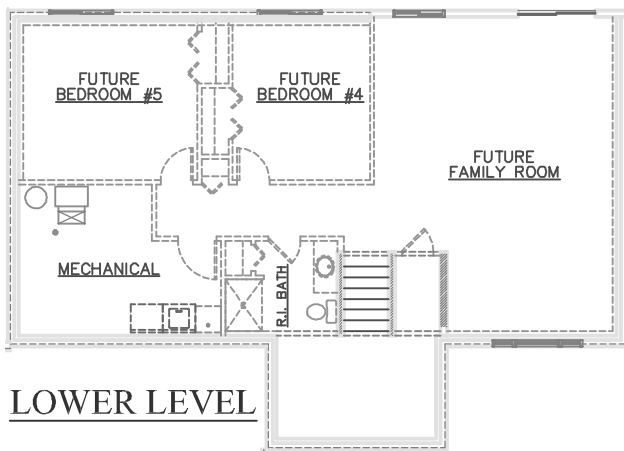


\*SOME OPTIONS  
MAY BE SHOWN\*

### ROOM SIZES

MASTER BEDROOM	14'-2" X 13'-6"
BEDROOM #2	10'-4" X 10'-10"
BEDROOM #3	10'-4" X 10'
LIVING ROOM	13'-8" X 15'-5"
DINING	11'-2" X 11'-7"
KITCHEN	9' X 11'-7"
FUTURE REC ROOM	17' X 24'-6"
FUTURE BEDROOM #4	12' X 12'-6"
FUTURE BEDROOM #5	13'-8" X 12'-6"

- \* 3-5 BEDROOMS, 2-3 BATHROOMS
- \* 1,456 - 2,423 SQUARE FEET
- \* OPEN FLOOR PLAN
- \* VAULTED CEILING
- \* HUGE MASTER WALK-IN-CLOSET
- \* COVERED FRONT PORCH
- \* LARGE KITCHEN ISLAND



3475 Vermillion Street, Suite 101 ~ Hastings, MN 55033 ~ 651.437.3700 ~ [www.gregjhomes.com](http://www.gregjhomes.com)

Plans and specifications are subject to change without notice. Copyright Greg J Homes of Hastings Inc. 2023