

INFRALITE® & OPTILITE™ in NICUs



MeritCare Hospital NICU - Fargo, North Dakota
Lighting: **RR01206** - OPTILITE™

Features:

- Two models offered: **OPTILITE™** and **INFRALITE®** (see reverse side).
- Up to 18,100 footcandles on the bed from a 8 foot ceiling ensures proper visualization.
- Fixtures tilt up to 35° and rotate 360° directing light around warming heads.
- Each fixture moves independently permitting multiple site illumination and adjustable patterns of light.
- Patented infrared remote control and wall control (wall control only for **OPTILITE™**) provide instantaneous and precise adjustment of aiming and intensity.
- Dichroic (cold mirrored) reflectors transmit 70% less heat, assuring patient and practitioner comfort.
- 2 fixtures per system ensure illumination in the event a lamp burns out.
- Accurate tissue color rendering from 100 CRI, high output, long life, 3000°K tungsten halogen lamps.
- Fully recessed fixtures are easy to clean and fully serviceable through the aperture.
- Kirlin's exclusive three year warranty (one year for remote control.)



INFRALITE®
infrared remote control
and wall control

OPTILITE™
wall control



THE KIRLIN COMPANY

3401 East Jefferson Avenue • Detroit, MI 48207-4232
313-259-6400 • FAX 313-259-3121 • info@kirlinlighting.com • www.kirlinlighting.com

Recessed Motorized Procedural Lights

For more information, including specification sheets and photometry, on these and all other Kirlin products, please visit www.kirlinlighting.com or call your local Kirlin Sales Representative for the **Healthcare Facility & Patient Lighting catalog (03HC)**.

INFRALITE®

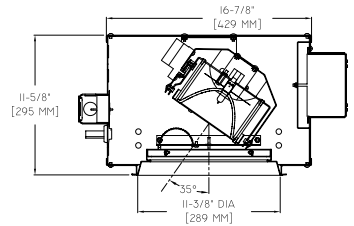
Features (per luminaire)

- Tilt up to 35°
- 360° horizontal adjustability
- 150W 22 volt TH DCB T4 lamp
- Cold mirrored reflector
- RR01202 - two luminaire system
- RR01203 - one luminaire system

Performance

18,100 fcs/pair
Ceiling height: 8 ft
Luminaire spacing: 4 ft

Dimensions

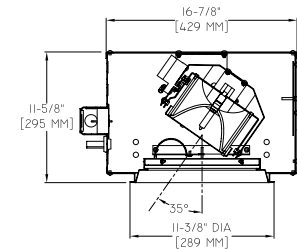


OPTILITE™

- Tilt up to 35°
- 360° horizontal adjustability
- 150W 120 volt TH DCB T4 lamp
- Cold mirrored reflector
- RR01206 - two luminaire system
- RR01207 - one luminaire system
- RR01208 - one luminaire system (linear sweep)

4900 fcs/pair

Ceiling height: 8 ft
Luminaire spacing: 4 ft

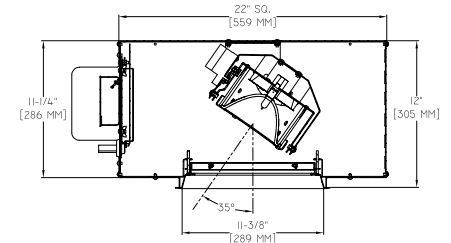


INFRALITE® DX

- Tilt up to 35°
- 360° horizontal adjustability
- 250W 22 volt TH DCB T4 lamp
- Cold mirrored reflector
- RR01200 - two luminaire system
- RR01201 - one luminaire system

25,600 fcs/pair

Ceiling height: 8 ft
Luminaire spacing: 4 ft

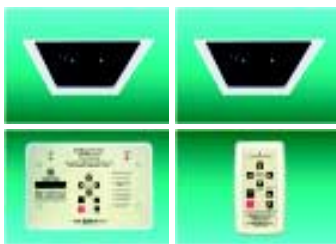
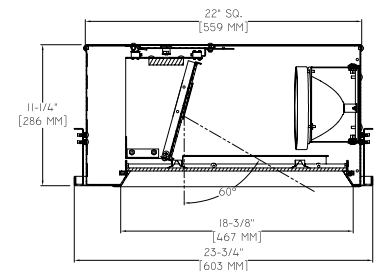


INFRALITE® 60

- Tilt up to 60° (ideal for LDRs)
- 45° horizontal adjustability
- 2-150W 22 volt TH DCB T4 lamps
- 2 cold mirrored reflectors
- RS01704 - two luminaire system

7800 fcs/pair

Ceiling height: 8 ft
Setback from target: 6 ft
Luminaire spacing: 4 ft

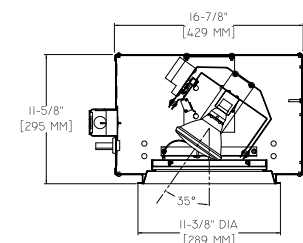


SPOTLITE™

- Tilt up to 35°
- 360° horizontal adjustability
- 250W 120 volt TH PAR38 lamp
- RR01209 - two luminaire system
- RR01210 - one luminaire system
- RR01211 - one luminaire system (linear sweep)

3300 fcs/pair

Ceiling height: 8 ft
Luminaire spacing: 4 ft



THE KIRLIN COMPANY

3401 East Jefferson Avenue • Detroit, MI 48207-4232

313-259-6400 • FAX 313-259-3121 • info@kirlinlighting.com • www.kirlinlighting.com