

Howard Rotavator



Model

P

For tractors to 40 H.P. . . . The most versatile Rotavators in the Howard line, and ideally suited to small farms, parks, golf courses, rental yards, groves, orchards, and truck farms. "P" models are available centrally mounted for general use, or offset for working close to trees and shrubs without damaging roots or limbs.

Tillage Widths: 40", 50", 60" & 70"

Tractor: For tractors up to 40 H.P. with 540 rpm P.T.O.

Linkage: Category I and II 3 point linkage

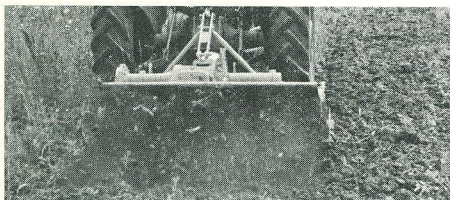
Tillage Depth: Adjustable to 7"

Rotor Speeds: Multiple speeds available with "Selectatilt" gearbox.



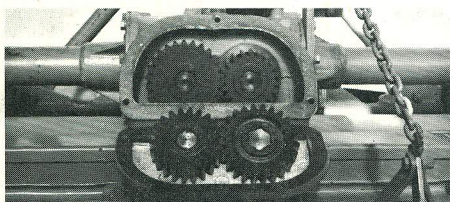
Because it is light and fast, the "P" Series is the most versatile Rotavator in the low-horsepower class. It can be easily maneuvered among rows of fruit and vegetable crops; it is ideal for landscaping and grounds maintenance operation; it is light enough to be transported to distant work sites and is an all-round versatile tillage machine for the smaller farm.

In secondary tillage operations, the wider units provide the finest possible seedbed in the shortest time.



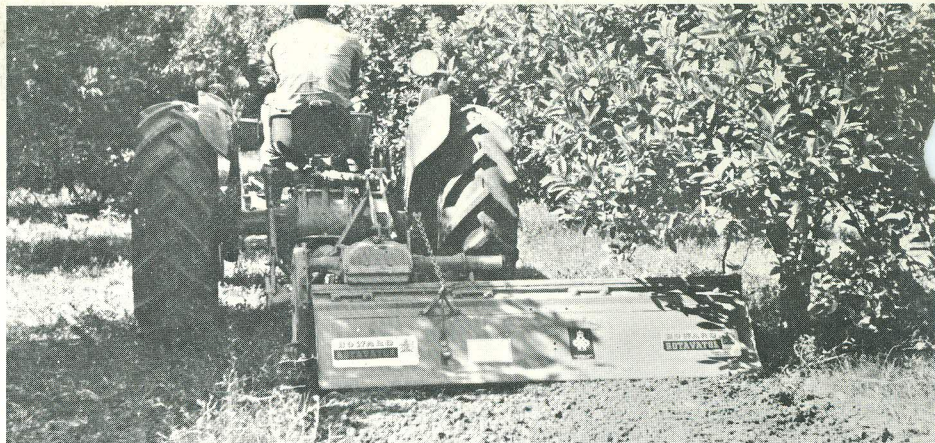
Faster tillage operations

With a single pass across the field, the Model "P" can accomplish the same work that usually requires several passes using conventional equipment. At the same time, the Rotavator will produce a seedbed that is far superior; building soil properties that will encourage the early germination of seeds and promote healthier root structure. The reason—complete control of the tilth to match the soil conditions and finish required.



The operator is in control

The Model "P" Rotavator lets you control the tilling operation so you can obtain the exact tilth you want in any soil condition. This is done through the selection of depth desired and control of the rotor speed using Howard's exclusive "Selectatilt"® Rotor Speed Control System. The easily accessible "Selectatilt" gearbox mounted on the Rotavator gives the operator instant choice of varying rotor speeds using interchangeable gear combinations. These gears may be changed at any time . . . even in the field, as no tools are required.



Better soil structure

During Rotavation, crop residues are chopped and mixed thoroughly with the soil. This adds the needed humus-producing materials to the soil, allowing it to warm up quicker in Spring, with better moisture retention properties than conventionally prepared land.

In addition, the "P" Models are light weight and require only a single pass across the field, factors that are most important in preventing ground compaction and the formation of hardpan. Thus, the Rotavator becomes an equally important factor in maintaining good soil structure, insuring proper drainage, and preventing run-off of valuable moisture.

Versatility for many operations

Use of the Model "P" is not confined to Spring tillage operations. Its complete control of depth and rotor speed, plus its maneuverability, make it ideal for cultivating operations. It will kill and turn in weeds without danger of damaging root structures. Offset models with their low profile are particularly well-suited to cultivating in orchards where it is necessary to reach out beneath the branches without damaging them.

Economical operation

The "P" Series offers the user true economy in tillage and cultivating operations. First, there is less equipment to buy and maintain; it's a single machine that will do the work of many. Second, there is a saving in time and labor realized by the fast, one-pass operation in producing perfect seedbeds.

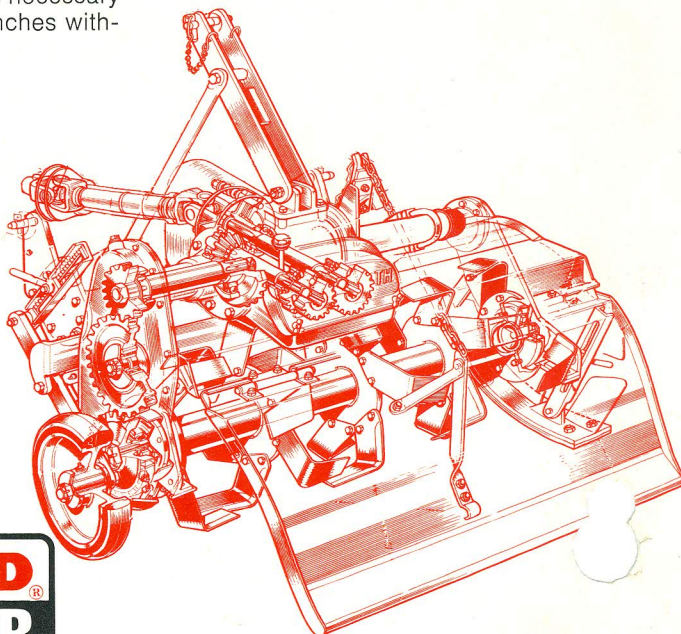
This in turn, provides improvement in the seedbed itself, for with fewer passes there is less compaction and a better and more productive soil structure.

Finally, there is savings to the tractor. Not only is the tractor making fewer trips across the field, the forward thrust of the Rotavator actually assists the tractor forward, eliminating wheel slippage and making full use of its power.

Wide range of models

Howard manufactures a complete range of Rotavators for all crops and farming conditions. There are 23 models in eight series from the 16" Hand-Controlled units to the 180" wide ST for large acreage farming.

Contact your local Howard Dealer or write direct for complete specifications.



Model P



HOWARD ROTAVATOR CO., INC.
Harvard, Illinois 60033
A Member of the Rotary Hoes Group of Companies

We reserve the right to change specifications at any time.

Printed in the U.S.A.
Form No. 601-100-472