



# Tiny WIFI to BLE Gateway



## Product Description

GW03-DVT1 designed with the industry's first single PCBA for **WIFI to BLE4.1** Gateway solution creates for the Internet of Things (IoT). GW03-DVT1 Integrated with high performance ARM Cortex-M4 MCU is a low cost, small size that provides reliable wireless data communication with WIFI to over BLE4.1 networks. It enables robust BLE central controls up to **10** simultaneous connections with BLE slave devices like sensors to be built with very low total BOM cost solutions for smart-home or Beacons' management application .

## Feature :

- One Micro USB 5V Power input
- One Power LED
- One WIFI Status LED
- Supports Station, Access Point, and Wi-Fi Direct modes.
- Embedded :
  - TCP/IP stack
  - TLS/SSL stack
  - HTTP server, HTTPS server and multiple Internet protocols
  - 8 Simultaneous TCP or UDP Sockets
  - 2 Simultaneous TLS and SSL Sockets
- 802.11 b/g/n Radio, Baseband, Medium Access Control (MAC)
- WPA2 Personal and Enterprise Security
- SmartConfig™ Technology, AP Mode, and WPS2 for Easy and Flexible Wi-Fi Provisioning

[www.3Egreen.com](http://www.3Egreen.com)





**3Egreen** technology Inc.

- Bluetooth 4.1 compliant Support of Up to 10 Simultaneous Connections
- Fast Scan BLE devices up to over 50 devices in short time
- Provides Longer Range including 2x Range Over Other BLE-Only Solutions
- **Bluetooth RF Performance :**  
TX Power Up to +5dBm@9.1mA  
RX Sensitivity –97 dBm
- **WIFI RF Performance :**  
TX Power:17.0 dBm @1 DSSS  
17.2 dBm @11 CCK  
13.5 dBm @ 54 OFDM  
RX Sensitivity: –94.7 dBm @ 1 DSS  
– 87 dBm @11 CCK  
–73 dBm @ 54 OFDM
- WIFI IPEX Connector for External Antenna
- PCBA Dimension : 55mm x 52.4mm x 3.3mm ( L x W x H )

## Applications

### For Internet-of-Things applications

- Cloud Connectivity – Internet WIFI to BLE Gateway
- Home Automation – Industrial Control
- Home Appliances – Smart Plug and Metering
- Access Control – Wireless Audio
- Security Systems – IP Network Sensor Nodes
- Smart Energy

---

[www.3Egreen.com](http://www.3Egreen.com)



**3Egreen** technology Inc.

International Building 11F., No.43, Sec. 4, Keelung Rd.,  
Taipei City 106, Taiwan  
Tel : 886-2-27362529

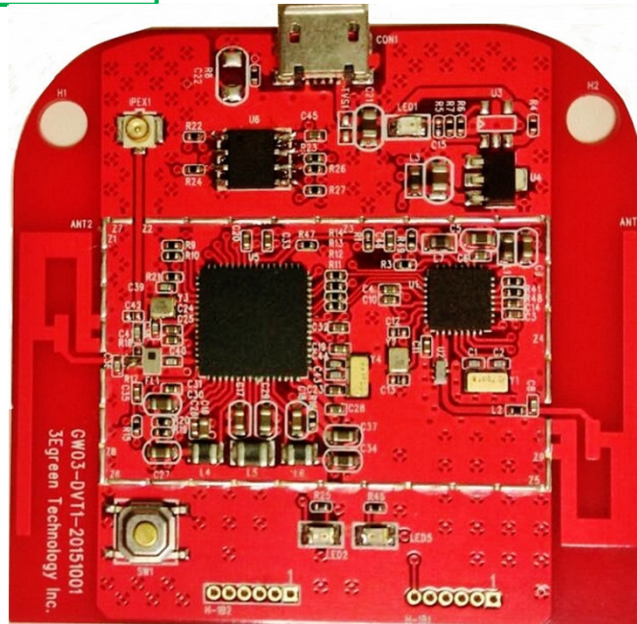


**3Egreen** technology Inc.

## PCBA Module

USB 5V →

WIFI  
CHIP →



[www.3Egreen.com](http://www.3Egreen.com)



**3Egreen** technology Inc.

International Building 11F., No.43, Sec. 4, Keelung Rd.,  
Taipei City 106, Taiwan  
Tel : 886-2-27362529



## Electrical Characteristics

### Absolute Maximum Ratings

Parameters	Min	Max	Unit
Storage temperature	-40	+120	°C
Supply voltage VDD input to the ground	4V	5.5	V

## BLE RF Characteristics

Conditions: TA = 25°C

Parameters	Condition	Min	Typ	Max	Unit
RF frequency	BLE 2.4G	2045	2400	2480	Mhz
RF frequency spacing	At antenna input, 250 Kbps		2		Mhz
RF sensitivity (high gain)	At antenna input, 250 Kbps		-93		dBm
Maximum RF input		-10			dBm
Adjacent channel rejection	@+/-1 MHz, 250 Kbps		-5		dBm
Alternate channel rejection	@+/-2 MHz, 250 Kbps		50		dBm
RSSI range	High gain mode, 250 Kbps Standard mode	-90 -87		-45 -35	dB
Maximum RF output power	At 5 dBm output power setting		5		dBm
RF output power control range		-23		5	dBm
TX gain control resolution		1			dB
TX EVM			15		%

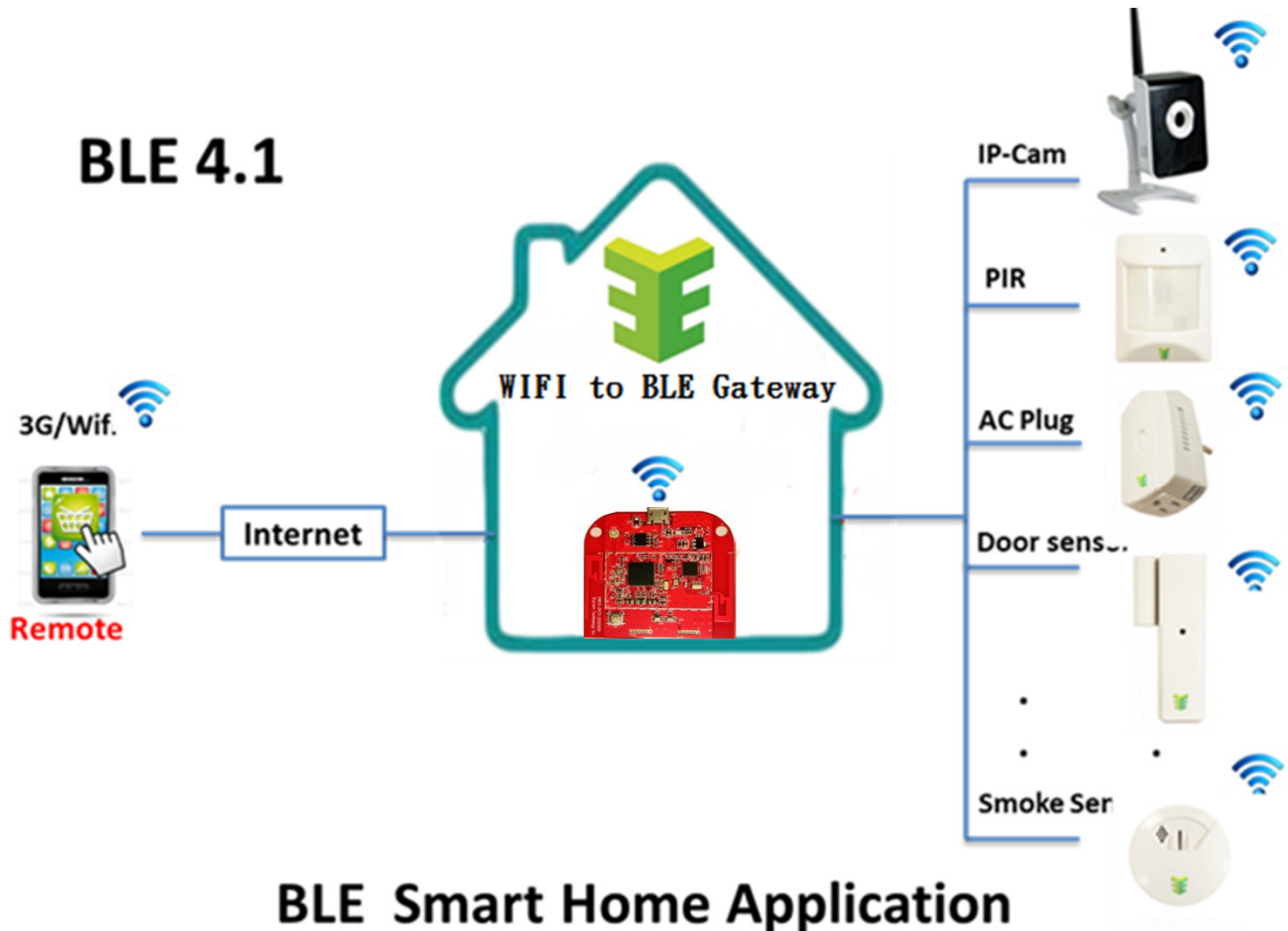
## Recommended Operating Conditions

Test conditions: Power = 5V

Parameters	Min	Typ	Max	Unit
Ambient Operating Temperature	-20	+40	+70	°C
Supply Voltage for Power Input	3.3	5	5.5	V



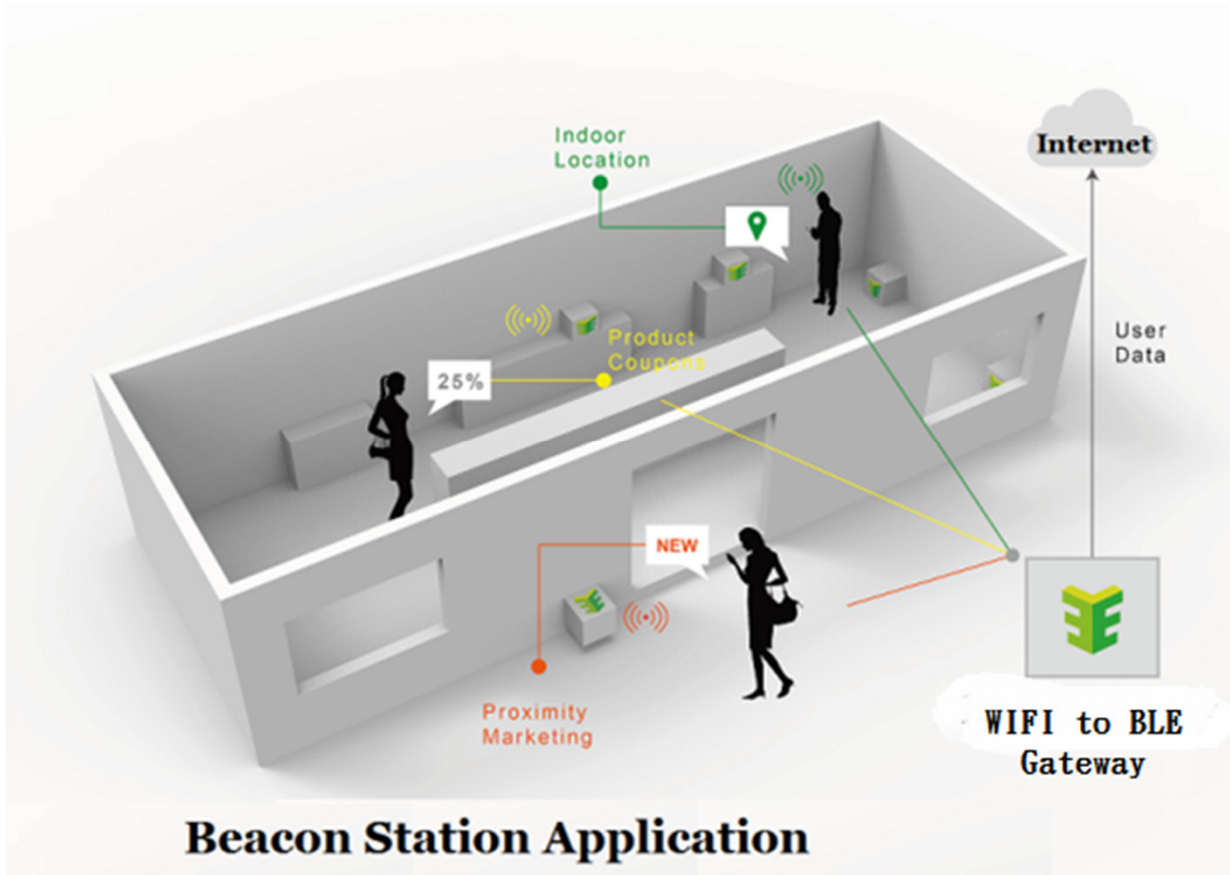
## Application 1





**3Egreen** technology Inc.

## Application 2



[www.3Egreen.com](http://www.3Egreen.com)



**3Egreen** technology Inc.

International Building 11F., No.43, Sec. 4, Keelung Rd.,  
Taipei City 106, Taiwan  
Tel : 886-2-27362529



**3Egreen** technology Inc.

### **Copyright Notice**

Copyright © 2015 3Egreen Technology Co., Ltd.

All Rights Reserved.

Reproduction without permission is prohibited.

### **Trademarks**

3Egreen is a registered trademark of 3Egreen Technology Co., Ltd.

---

[www.3Egreen.com](http://www.3Egreen.com)



**3Egreen** technology Inc.

International Building 11F., No.43, Sec. 4, Keelung Rd.,  
Taipei City 106, Taiwan  
Tel : 886-2-27362529