

Tree of Life Evangelical Lutheran Church

556 East Second Street

Jamestown NY 14701

ADDRESS SERVICE REQUESTED

NON-PROFIT ORG.

US POSTAGE

PAID

Permit No. 438

Jamestown, NY

MAILING
LABEL

LEAVES OF LIFE December 2018



Many happy returns

Somehow, not only for Christmas,
But all the long year through,
The joy that you give to others,
Is the joy that comes back to you.
And the more you spend in blessing
The poor and lonely and sad,
The more of your heart's possessing
Returns to you glad.

—John Greenleaf Whittier

Special dates

First Sunday of Advent, *Dec 2nd*
Second Sunday of Advent, *Dec 9th*
Third Sunday of Advent, *Dec 16th*
First day of winter, *Dec 21st*
Fourth Sunday of Advent, *Dec 23rd*
Christmas Eve, *Dec 24th*
Christmas Day, *Dec 25th*
New Year's Eve/Watch Night, *Dec 31st*



Holy Trinity site

825 Forest Ave
Jamestown NY 14701
(716) 488-4235
Office: 9:30-1:30 TUES



Immanuel site

556 East Second St
Jamestown NY 14701
(716) 664-7104
Office: 8-12 M-F

***Tree of Life Church: united in worship, sharing Jesus
and serving all people.***

Tree of Life Evangelical Lutheran Church

Tree of Life Worship Schedule

PASTOR TARA LAMONT EASTMAN

SUNDAY MORNING SCHEDULE

Holy Trinity Site

825 Forest Ave
Jamestown NY 14701
(716)488-4235

Office: tues 9:30-1:30

Immanuel Site

556 East Second Street
Jamestown, NY 14701
(716) 664-7104

Office: m-f 8-12

SERVICES FOR THE MONTH OF **DECEMBER**

are at our **IMMANUEL SITE** ..

Regular Schedule Sunday School 9am & Worship at 10:15



Holy Trinity



Immanuel

Welcome to Tree of Life Lutheran Evangelical Lutheran Church

HT office 716 488-4235; ILC office 716 664-7104

Contact info: Pastor Tara Lamont Eastman

Email: pastor@toljamestown.com 716 969-3950 (call or text)

Pr at ILC office M & W (9:30am) & HT office T & TH (9:30am)

Note TREE OF LIFE has new emails:

admin@toljamestown.com – Rosemary DiDomenico

pastor@toljamestown.com – Pastor Tara Eastman

secretary@toljamestown.com – (emails forward to Rosemary)

income@toljamestown.com – Beryl Emley

expense@toljamestown.com – Jan Coleson

music@toljamestown.com – Eric Hester

TOL Website:

www.toljamestown.com

Tree of Life is on Facebook

MEMORIAL RECEIVED:

In memory of:

David Bloom

From:

David Bloom Estate

In memory of:

Lois Grout

From:

**Donna Haenggi
Tom & Sue Priester**

SENIOR HIGH WINTER RETREAT

JAN 4-6, 2019

FOR 9TH-12TH

GRADERS

FOR MORE INSO &

REGISTRATION

FORM, CALL LCLC

AT

716 386-4125 OR EMAIL:

contact@lclcenter.org



NOTE CHANGE: When signing up for **ALTAR FLOWERS FOR HOLY TRINITY SITE OR BULLETIN SPONSORSHIP FOR IMMANUEL SITE**, please **contact the**



church office

716 664-7104 or email

Rosemary_at

admin@toljamestown.com

with requested date & what you would like printed in the bulletin that week and any specific request on choice of flowers or colors. I will have a chart with both schedules on board next to ILC's office door and will contact [Jan at Holy Trinity](#) who will in turn make sure flowers are ordered & delivered.

TREE OF LIFE LUTHERAN CHURCH---GENERAL FUND

| | OCTOBER | Actual Y-T-D | Budget Y-T-D |
|---------|----------|--------------|--------------|
| Income | \$14,935 | \$147,514 | \$149,292 |
| Expense | 14,771 | 180,528 | 193,079 |
| Balance | \$164 | -\$33,014 | -\$43,787 |

SERVING TREE OF LIFE

LECTOR SCHEDULE

Please familiarize yourself with the lectern in both churches so if and when you should be the lector so you are comfortable reading at both sites.

Note:

SCHEDULES were mailed out to each person. They are also posted each week in the bulletin and they are posted on the bulletin board at the lower entrance at ILC & for HT in their Narthex.

REMINDER: **DEC** is at
IMMANUEL SS 9 & W 10:15

ASSISTING MINISTER

2ND: Carol S
9TH: Darcy W
16TH: Sue P
23RD: Susan B
30TH: Wolf-Dieter K

COMMUNION ASSISTANT

2ND: Paula H, Steve S
9TH: Sandy S, Kevin S
16TH: Darcy W, David E
23RD: Dodie E, Jane E
30TH: Chris R, Mike F

COUNTERS

2ND: Deb M, Sue P
9TH: Darcy W, Carol S
16TH: Deb M, Steve S
23RD: Carol S, ?
30TH: TBA council

LECTORS

2ND: Linda S
9TH: Darcy W
16TH: Janet T
23RD: Wolf K
24th: **Tom P (10pm)**
30TH: Dodie E

ACOLYTE:

2ND: Ava H
9TH: Stephanie E
16TH: Ayden H
23RD: Maddie J
30TH: Alaina D

GREETERS

2ND: Clair & Shirley F
9TH: Allen J + 1
16TH: Ev O, Darcy W
23RD: Gayle L, Karyn O
30TH: Chris A, Nancy J

USHERS

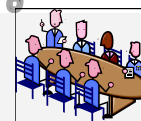
2ND: Grp 3
Al J Terra & Scott D, Matt K
9TH: Grp 4
Gary S, Paul H, Gary C
16TH: Grp 5
Karyn O, Gayle L, Dorie D, Dan G
23RD: Grp 1
Dennis B, Carrie M, George H, Deb M
24th: **Grp 2 (10pm)**
Mike F, Dennis A, Roberto C, Brenda D
30TH: Grp 3
Al J, Scott & Terra D, Matt K

ILC (WORSHIP ENV. TEAM)

FOR **DECEMBER**: Kim, Carrie, Susan

If you are unable to serve on your Sunday, you are responsible for finding a replacement and calling to let the office know who is serving for you.

Tree of Life Evangelical Lutheran Church



Tree of Life Evangelical Lutheran Church Council

President: Carol Sorg
Vice-Pres: Cindy Swan
Treasurer: Deb Morlock
Secretary: Steve Sandberg

Non-Officers:

- Chris Radack
- Thure Fransen
- Darcy Whitney
- Dorie Deyo
- Sue Priester
- David Eaker



NOTE:

If local schools are closed, be sure to call office prior to make sure we are open. Also will be on WGRZ & WIVB cancellations & closing & possible local radio stations

Choir rehearsals are on
Wednesdays at 7:00 at **at**
whichever location worship is for the month ..



To all volunteers who give their time to help out as needed. You are truly appreciated.

Tree of Life News



ESTHER CIRCLE meeting will meet in
Wednesday, Dec 5th •• Regular meetings
 are the First Wednesday of each month **at**
1:30 at the Holy Trinity site in church library
(Bible study will be from December Gather
Magazine this month) unless change noted.
 Any women from Tree of Life and their
 friends are welcome to attend.
 We use the Bible study found in Gather Mag-
 zine refreshments and good conversations after-
 wards!

WOMEN KNIT TOGETHER Monday, December 3rd and will
meeting each first Monday of month at 10am in the Hamlin
library at ILC site through May (Picnic in June)

LABOR OF LOVE will meet on **Monday, December 3rd 9am** in **Anderson Hall** at the Holy Trinity site. They meet 1st Monday of month thru December, weekly January-May

Men's Fellowship

SENIOR MEN'S GROUP meets every first and third Wednesday @ 9am for projects & fellowship. All men are invited to join them! **December dates are: the 5th & 19th AT Immanuel {group will be notified if needed at HT}**



In Luke 2:10, the angels share good news that continues to bring great joy today.

Directions: Circle all the complete small “joy” words — forward only.
Count the total. Bonus: See if you can find “Jesus” amid all the joy!

[illegible]

TOTAL JOY=_____

Answer: 36 (10 in the J, 15 in the O, 11 in the Y). Jesus is at the bottom of the large O

**Note: IF YOU WOULD LIKE
NAME REMOVED FROM OUR
MAILING LIST, PLEASE LET THE
CHURCH OFFICE KNOW.**

ILC: 716 664-7104—Rosemary
admin@toljamestown.com

DECEMBER ELCA

LECTIONARY C

1ST SUN OF ADVENT

Jeremiah 33:14-16
Psalm 25:1-10
1 Thess. 3:9-13
Luke 21:25-36

2ND SUN OF ADVENT

Malachi 3:1-4
Luke 1:68-79
Phil. 1:3-11
Luke 3:1-6

3RD SUN OF ADVENT

Zephaniah 3:14-20
Isaiah 12:2-6
Phil. 4:4-7
Luke 3:7-18

4TH SUN OF ADVENT

Micah 2:2-5a
Luke 1:47-55
Hebrews 10:5-10
Luke 1:39-45 [46-55]

TOL
CHURCH
COUN-
CIL WILL
MEET @

ILC SITE
AT
6:30PM

DEC
10th



Make this fun decoration as a
reminder of the joy Jesus brings.



What you need:

- Pencil
- Poster board
- Scissors
- Craft pompoms (red, white, green, silver, gold)
- Glue

What you do:

1. Trace large capital block letters J, O and Y on the poster board.
2. Cut out the letters.
3. Glue pompoms on one side of each letter, completely covering it.
4. Share JOY by displaying the letters in your home.

Pastor's message..

Waiting for the gifts of Christmas



Imagine this scene: you are sitting on the living room floor and Christmas music plays on the radio. All around you are the collected gifts in the process of being wrapped. As you gather the gifts for each person, you wrap them in shiny paper and then stack them one atop the other. Finally, you tie them with curling ribbon curls at the peak of the gift pyramid, and smile anticipating what the person will think of these gifts. The process of shopping, organizing, and wrapping the gifts is always fun. However, waiting for Christmas morning – especially waiting to give gifts to family and friends is difficult.

In 1 Corinthians 12, God is described as the giver of gifts to each and every person. The variety of gifts God distributes to people is amazing, with a list quite different than what appears on most of our holiday shopping list... **“God's various gifts are handed out everywhere; but they all originate in God's Spirit. God's various ministries are carried out everywhere; but they all originate in God's Spirit. God's various expressions of power are in action everywhere; but God himself is behind it all. Each person is given something to do that shows who God is: Everyone gets in on it, everyone benefits. All kinds of things are handed out by the Spirit, and to all kinds of people! The variety is wonderful: wise counsel, clear understanding, simple trust, healing the sick, miraculous acts, proclamation, distinguishing between spirits, tongues, interpretation of tongues.**

With all these gifts and all the people in the world, I wonder if God looks at each one of us and says, *"Ah here is the gift for this one. I think I'll give her trust."* or *"Wow, that gift would work to-*

pastor con't..

gether so well with peace, I'll have to give him wisdom as well."

Does God expectantly line up spiritual gifts for people, excited to give them and imagine our reactions when we open and use them?

We may wonder about the different gifts God gives to his children. Sometimes I might like to ask God, *"Can I exchange some of this proclamation for some peace? You know God, peace seems like a much better fit..."*

While this may be a question I might ask God, I know in my heart that God gives us specific gifts for a reason.

With God's gifts there is no gift receipt or exchange for something different. God's gifts, come into our lives for a purpose – **to show the world who God is.**

God's spiritual gifts, are like the Christmas gifts we receive, because we don't choose what we're given by others.

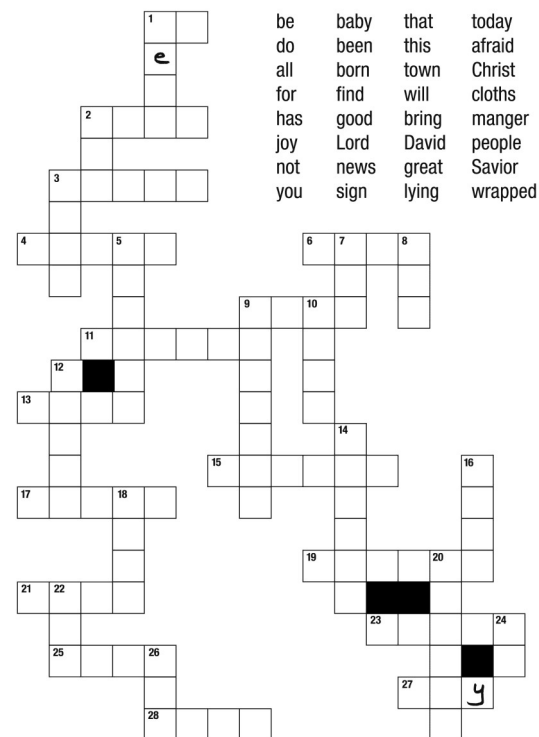
With each gift we're given from God we are called to: unwrap it, figure out what it is, and ask God to help us discern its purpose in our lives. Unwrapping Christmas gifts happens in a flash, but unwrapping God's spiritual gifts take some time, prayer and pondering to reveal.

As we enter the season of Advent it is a time of waiting in expectant anticipation for the gift of Jesus on Christmas day. In this time of expectancy, may God better reveal the gifts he has already given us.

Imagine for a moment, God, looking at us in the midst of this process of unwrapping, learning and applying these gifts. God smiles wide when we learn to truly understand and use these gifts for the purpose God has designed. There is nothing like

Puzzle!

The word list contains the angel's Christmas message to the shepherds. Fit those words into the crossword squares. Then write them on the correct lines below to complete Luke 2:10-11, NIV.



"_____ of _____ the _____ in the _____ of _____ a _____ to _____; he is _____ the _____." Luke 2:10-11, NIV

Answer: "Do not be afraid. I bring you good news of great joy that will be for all the people. Today in the town of David a Savior has been born to you; he is Christ the Lord." Luke 2:10-11, NIV.



December

BIRTHDAYS

You - Blessings to you!

TREE OF LIFE

12/2 Steve Sandberg, Pat Raffa
 12/4 David Shagla, Chris Ahlstrom
 12/5 Eleanor Ahlstrom
 12/8 Joanne Burling
 12/10 Glenn Wigren, Lee Bennett
 12/14 Emily Whitney
 12/15 Judy Lind, Joey Lombardo
 12/17 Rick Bowman, Ann Mogenhan
 12/18 Tyler Maloney, Karen Melquist, Richard Saullo Jr.
 12/21 Alice Carlson, Nichole Ridgway
 12/22 Letha Adelman
 12/23 Gloria Genberg
 12/25 Gayle Lyon, Bonnie Magers
 12/29 Collin Bentley



PLEASE LET THE CHURCH OFFICE
 KNOW if this needs update

pastor con't..

the feeling of seeing someone we love, love and use the gift that we've given to them. So imagine the joy of God – when the spiritual gifts we've been given – show the world who God is: *wise, understanding, trustworthy, healing, miracles, proclaimer of good news and more!*

Blessings to you on this upcoming Advent and Christmas season. May you unwrap all your gifts with expectancy, especially the ones that God give all year round!

Walking in Grace, *Pastor Tara Lamont Eastman*

Note on the Oct. 28 Vote

Rev. Daniel Rumfelt, Dean, SW Conference

On Sunday, Oct. 28th Tree of Life voted 69-64 to choose the Forest Ave. campus as their permanent ministry site. Following the vote concerns were raised to Bishop Macholz and myself that prompted us to review the vote. This review was not about the choice of the Forest Ave. site, but the process of the vote.

The first concern questioned the validity of the vote itself. This centers on the interpretation of "Contribution-of-Record," one of the criteria for a voting member. On the 28th we allowed members to make a "Contribution-of-Record" on the day of the vote itself, as long as their name was recorded on a check or envelope. Cash with no record of the contributor does not count. This is the manner I have always understood the constitution. I learned after the vote that "Contribution-of-Record" is properly understood by the ELCA, the Bishop and constitutional staff to mean a contribution made on a date *prior* to the vote and subsequently *recorded* in the Financial Secretary's records. This allows a definitive list of voting members to be printed prior to the vote.

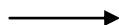


This issue, however, did not invalidate the Oct. 28th vote. The Bishop and I agreed that since, on the day of the vote, it was affirmed that a member who made a “Contribution-of-Record” that day would be counted as a voting member, the vote remained valid.

With that understanding, the second issue is whether everyone who voted on Oct. 28th actually fulfilled the requirements of a “voting member.” Simply put, a voting member must be a confirmed member of the congregation who has communed and made a “Contribution-of-Record” during the current or preceding year. A confirmed member may be someone confirmed at the congregation OR received as a member through transfer from another congregation OR received by Affirmation of Faith. The constitution does *not* discriminate on the basis of whether the confirmed member is active in the congregation – only that their name remains on the congregational register and has not been removed by transfer or action of the congregational council. Likewise, if an individual is active in the congregation, but not actually a member, they do not have a right to vote.

A thorough review – of everyone who signed-in on the 28th to vote – was conducted to confirm whether everyone was, in fact, a valid voting member. Anyone who voted but did not fulfill the requirements would become an invalid vote and not counted. Five or more persons that did not fulfill those requirements would invalidate the congregational vote of Oct. 28th.

The review confirmed that at least seven voters did not fulfill the requirements. These included former Holy Trinity and Immanuel members of Tree of Life. Five did not make a “Contribution-of-Record” on, or prior to, the day of the vote. Two more were invalidated because the voters could not be identified from their sign-in. *The outcome is that the vote of Oct. 28th is invalid* due to voters who did not fulfill the constitutional requirements of a voting member. That number of votes was discounted.



A Note from the Financial Manager for donations

I’d like to remind you that all contributions for **2018** must be in the church office by December 31st or mailed to the church with a postmark of December 31 or before. Any contributions received after December 31st will be counted as **2019** contributions.

You may contribute money in December toward **2018**’s pledge in order to get the additional deduction on your **2018** taxes. **Just be sure to mark it clearly that the contribution is being pre-paid for 2019** and have it in the church office by December 31st.

May God surround you with joy and peace this holiday season. And may you be abundantly blessed in your faith journey in the year ahead!

-Beryl Emley

p.s.

A special thanks to all who have sent in their pledge cards for the upcoming year.



TREE OF LIFE EVANGELICAL LUTHERAN CHURCH welcome the following who were received into membership

on Sunday, November 25th at morning worship:

Nita Barrett

Sam & Tracey Mingle

ANNUAL MEETING NOTICE

Please note: the 2nd Annual Meeting of Tree of Life Evangelical Lutheran Church, Jamestown NY will take place on Sunday, Jan. 27, 2019 following 10:15 Worship at our HOLY TRINITY site.

Please email all reports to Rosemary at ad-min@toljamestown.com by Friday, January 11, 2019. Reports will be available to the congregation 1 week prior to meeting.

NEEDED for 2018: (please look through these and send whichever you are responsible for— thank you!!)

Member changes, previous yr. minutes, Any congregation meeting minutes, Pastor's report (including Pastoral Acts), Children's Worship, Director of Music (including choir), Administrative Assistant Report, TOL council president report, Report of Bishop, Financial managers Reports, Treasurer's Report, Fund Activity, Eagle's Nest, WELCA, Loan Closet, Food Cupboard, Labor of Love, Rachel Circle, Esther Circle, Women's Knit Group, Worship & Music, Faith Formation, Finance, Evangelism & Outreach, Mutual Ministry, Property, Vision Team, Stewardship, VBS, Prayer Chain, God's Work our Hands 2018, Property, Tree of Life Social Group, Care Team (Home Communion), TOL Hospitality, Senior Men, Proposed/Approved Budget 2019, Auditor Report, any Resolutions.

LUCIA FEST .. SUNDAY, December 9th 2pm at Holy Trinity site, 825 Forest Ave.

ASHF and the Thule Lodge invite you to join them in a traditional Swedish Lucia celebration. Service will be followed by traditional Lucia buns and coffee as well as entertainment by the Thule Lodge's Children's Folk Dancers.

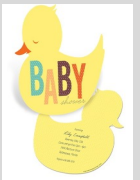


I presented the review to the Congregational Council on Tuesday, November 20th. The council moved and voted to accept the review, invalidating the vote of Oct. 28, and to schedule a new vote after the first of the New Year. The new vote will be conducted according the ELCA guidelines for "Contribution-of-Record." A pre-printed list of voting members will be provided.

Moving forward, Bishop Macholz and I keep Tree of Life in prayer and trust the working of the Holy Spirit in helping to heal the confusion, discord and hurt that some may be feeling. We are available for any questions or concerns as we move toward a new vote in the faith that Christ is with us whatever site is ultimately chosen to house Tree of Life.

Prayerfully Submitted,
The Rev. Daniel Rumfelt,
Dean, SW Conference, Upstate New York Synod, ELCA

Congratulations to: Thure Jason Fransen & Kristen Fransen ...Baby Lucas 8lbs 4ozs - arrived on November 16th.
AND to Hannah & Joseph Lombardo ... Gabriella Marie born on Nov. 13th..Welcome to the world!



The second Sunday of the month Immanuel will continue to be Food collection and will benefit Holy Trinity's food pantry. Any food will be welcome.



Worship ATTENDANCE

Nov 4th—91
Nov 11th—76
Nov 18th—76
Nov 25th—84



HT and ILC Prayer Chains

have been consolidated into a **TOL email Prayer Chain**. Prayer requests can be made through the pastor 969-3950; HT church office 488-4235; ILC church office 664-7104; or direct to Dodie 665-5062 her email is dodie2417@gmail.com. If you would like to be a part of this important mission please send your email address to Dodie.

HOSPITALIZATIONS

The church office no longer receives calls from the hospital when a member is hospitalized. It would be appreciated if someone from the family would call the church office when a hospitalization occurs. In addition to calls no longer being made to the office by hospital volunteers, the computer used by the clergy at the hospital to locate hospitalized members has been removed. Thank you for your assistance.

In case of hospital emergency, please contact Pastor Eastman at 716 969-3950.



presents



Advent - a season for all generations

Saturday, December 8, 2018

at

Christ Chapel

Lutheran, Jamestown
715 Falconer Street
Jamestown, New York 14701

No Cost

Registration & Fellowship: 9:15 AM
Catered Continental Breakfast: 9:30 AM

* Compliments of Lutheran's own Chef Dave *

RSVP Deadline: November 30, 2018
Call Lois Rumfelt: 664-4409

Free-Will Offering to benefit Chaplain's Discretionary Fund at Lutheran

Building Hours for HT site (825 Forest Ave.)
are as follows:

Mondays – CLOSED

Tuesdays: 9:30-1:30

Wednesdays: 10-2 for Food Pantry

Thursdays: 9-noon TOPS Group.

Fridays: 10-2 for food pantry.

Office phone will be set to call forward to the ILC [\(716\) 664-7104](tel:7166647104)) site of Tree of Life Church daily. Please contact administrative staff via email at:

admin@toljamestown.com or

secretary@toljamestown.com

ILC Site Office Hours at 556 East Second Street are M-F 8-Noon.

HT site number: [\(716\) 488-4235](tel:7164884235)

Mission Message

Christmas Shopping

Yea!!! My Good Gifts catalog arrived in the mail. Now I can do my Christmas shopping! Did you get one? If you're not familiar with Good Gifts, here's how it works: If Aunt Sally and Uncle Fred really don't need anything, or if you have a person on your list that is really impossible to buy for, or if you'd just like to honor someone, this is the perfect way. Through ELCA World Hunger, you can supply someone throughout 83 countries with the support they need to thrive. Prices range from \$10 to upwards of \$1000. The most popular gift is baby chicks, which will grow into egg-laying hens to provide a family with much needed protein in their diet, plus extra eggs to sell at market. Many other animals are available too. Or provide a clean, safe water supply with wells and filters. You can send a girl to school, or provide school supplies. Health care is also an option by stocking a clinic, mosquito nets, or vaccinations. There are over 50 choices in the catalog, surely one will be the right color and size! Communities communicate their needs to the World Hunger folks, and these projects are born. The honorary recipient will receive a card, while the actual recipients receive exactly the kind of support that they need. It's a total win-win-win

ELCA.org/goodgifts will take you directly to the catalog for your shopping convenience! No going to the mall, waiting in long check-out lines, or parking hassles. We are truly church together for the sake of the world! *Thank you!*

God's Work. Our Hands.

Marcia Brown, Mission Interpreter

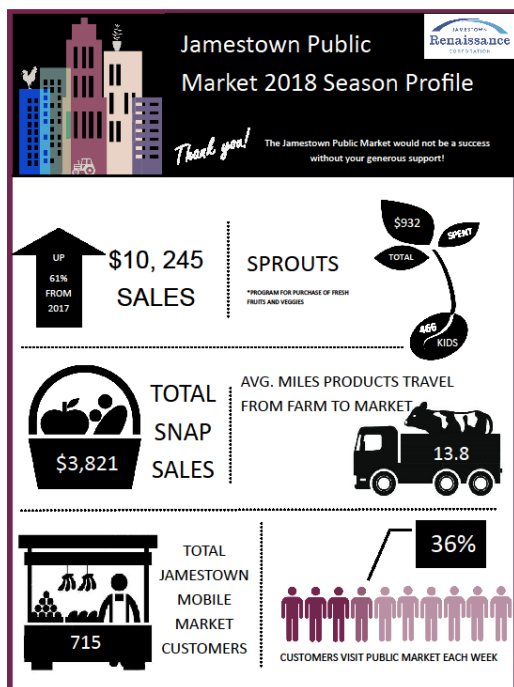
"Leaves of Life " DEADLINE
FOR JANUARY NEWS Is Sunday DEC 23rd

Work party to assemble

will be 9am(at Immanuel)

WEDNESDAY, January 2nd





Pastor Tara Eastman

Hello,

On behalf of the Jamestown Renaissance Corporation, I wish to extend our thank you for your generous support of the Jamestown Public Market. Through your attendance at our 'Market to Table Event', donation with the Give Big CHQ Campaign, or generous monetary contribution you directly contributed to the

success of the market's 2018 season! The programming we provided our community would not have been possible without your support.

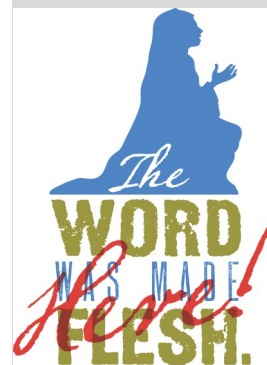
Take a look at the attached info-graphic illustrating the outcomes of our various programs and numbers reached! We plan to expand even further in the years to come.

We hope you consider joining us as a customer for the 2019 season, volunteering for future JRC related events, or through continued support of our JPM programming.

Thank you again,

Linnea

Here and now



Bishop Stephen Bouman stood behind an altar in a small crypt chapel of the Church of the Annunciation in Nazareth, supposedly at the location where Mary heard she was going to have a baby. Carved into the altar was the Latin for "The Word was made flesh," but Bouman noticed an addition: *hic*, or "here." *Verbum caro hic factum est*, "The Word was made flesh *here*."

Whoever authorized that inscription probably meant it to refer to that specific location. In reality, however, the Incarnation means God became flesh here on earth, for all of us. The Incarnation means we can speak of the nearness of God. It means God walks with us on earth, and that if we are saved anywhere, it is right here.

Faith and feelings

During a Bible study on faith, Ney Bailey came up with this definition: "Faith is taking God at his word." Furthermore, she was reminded that "the word of our God endures forever" (Isaiah 40:8, NIV).

In *Faith Is Not a Feeling* (WaterBrook), Bailey writes, "[Sometimes] I have felt afraid or lonely or depressed. My heart has literally ached in anguish over circumstances of life, and in those moments I have been the most tempted to doubt the truth of God's Word. But instead I chose with my will to believe his Word. Thousands of times my prayers have begun, 'Lord, I feel ... but, Lord, your Word says'"

Bailey counsels, "You and I can either grow accustomed to listening to our feelings, thoughts, and circumstances, letting them control us, or we can be in the habit of taking God at his word despite our feelings and life experiences. ... His Word is truer than our feelings."

THANK YOU TREE OF LIFE BELL RINGERS



In the words of Jesus:
“It is more blessed to
give than receive.”
Acts 20:35 In serving
we often receive
more than we give.
This thinking has been
echoed by many of
the TOL bell ringers

who welcome this opportunity to help each year.

Thank you to the members of Tree of Life Lutheran Church who volunteered to help with the Salvation Army Red Kettle Drive.

The following members took time from their busy holiday schedules to share in this community outreach ministry.

Carol Sorg

Tom and Sue Priester

Clair and Shirley Fletcher

***Carolyn Thomas**

Dennis & Jan Bechmann

Dan Gustafson

Nancy Johnson

Engle Family

Dennis Anderson

Hagelin Family

Many of the Tree of Life Bell Ringers stated that it was a wonderful experience that they look forward to doing each year. Several stated that many who outwardly had very little gave very generously of their meager means. This is mindful of the story in the Bible when the widow gave a few pennies—all that she had!

This is just another way members of Tree of Life Lutheran Church are serving their fellow man and doing God’s work. Thank you to all the volunteers who took part in this community ministry.

Please excuse any names that were accidentally omitted—but know you are appreciated. *Volunteered to help TOL Church—special thanks!

Advent/Christmas Seasonal events

at Tree of Life:

Hanging of the greens – Friday November 23, 9- noon, 825 Forest Ave. / Wednesday Dec. 5th 9- noon 556 East Second Street.



Sunday December 2nd – following worship – Bring a Mason Jar to decorate and create a “DIY Mason Jar Advent Calendar”. 556 East Second Street, Jamestown, NY 14701

Lucia Festival Sunday Dec 9 2 PM HT, 825 Forest Ave.

Advent/Christmas Youth program practice – Sunday AM and Friday 14 6-8 PM, 556 East Second Street Site.

Advent/Christmas Youth program Dec 16th in 10:15 am worship service – 556 East Second Street Site.

Blue Christmas Service Wednesday Dec. 19th 6 PM, 556 East Second Street Site.

Choir Cantata – Sunday Dec. 23, 10:15 am worship, 556 East Second Street Site.

Christmas Eve – Monday Dec. 24:



4 pm Family Service at 825 Forest Ave.

10 pm Candlelight Service 556 East Second Street.

December 2018

| Sun | Mon | Tue | Wed | Thu | Fri | Sat | | | | | | | | | | | | | | | | | | | | | | | | | | | | | | | | | | | | | | | | | | |
|--|--|--|--|--|---|---|---|---|---|---|---|---|---|--|--|---|---|---|---|---|---|---|---|---|----|----|----|----|----|----|----|----|----|----|----|----|----|----|----|----|----|----|----|----|----|----|--|--|
| Worship for the month of <u>December</u> is at our <u>Immanuel</u> site, 556 East Second St, Jamestown | | | | | | 1 | | | | | | | | | | | | | | | | | | | | | | | | | | | | | | | | | | | | | | | | | | |
| 2 1st Sun. of Advent SS 9, W 10:15 DIY Mason Jar Advent | 3 ILC: Healthy Bones, 9 Wm Knit, 10 Tai-chi, 11am-12:30 Sr Cent. Bingo, 11:30 HT: LABOR OF LOVE, 9AM | 4 Ministerium 10-3 ILC: Tai-chi, 9-11:15 Sr Center Exer.,10 HT OFFICE open 9:30-1:30 MHA –Gateway Chapel, 2 | 5 ILC: SR MEN, 9 Healthy Bones, 9 Art Journal, 6, Choir, 7 HT: 10-2 Food Cupboard ESTHER CIRCLE 1:30 | 6 HT: TOPS 9-NOON Finance Team, 1 ILC PEER SUPPORT, 7 Sr Center Exer.,10 | 7 ILC: Healthy Bones, 9 HT: 10-2 Food Cupboard | 8 WELCA Christ Chapel 9:15 Registration ADVENT—a season for all generations | | | | | | | | | | | | | | | | | | | | | | | | | | | | | | | | | | | | | | | | | | |
| 9 2nd Sun. of Advent SS 9, W 10:15 FOOD SUNDAY Youth prog practice LUCIA FEST, 2 HT | 10 ILC: Tai-chi, 9-11:15am Sr Cent. Bingo, 11:30 Council, 6:30 ILC | 11 ILC: Tai-chi, 9-11:15 ILC: Sr Center Exer.,10 HT OFFICE open 9:30-1:30 MHA –Gateway Chapel, 2 | 12 ILC: Healthy Bones, 9 STAFF mtg, FOSTER Grandparent GRP, 12-3 Prayer Group 6, Choir 7 | 13 HT: TOPS 9-NOON ILC: Sr Center Exer.,10 | 14 ILC: Healthy Bones, 9 6-8pm youth prog.practice HT: 10-2 Food Cupboard | 15 | | | | | | | | | | | | | | | | | | | | | | | | | | | | | | | | | | | | | | | | | | |
| 16 3rd Sun. of Advent SS 9, W 10:15 w/ Youth Program | 17 ILC: Tai-chi, 9-11:15am Sr Cent. Bingo, 11:30 OFFICE open 9:30-1:30 | 18 ILC: Tai-chi, 9-11:15 ILC: Sr Center Exer.,10 HT OFFICE open 9:30-1:30 MHA –Gateway Chapel, 2 | 19 ILC: SR Men 9 Property Team 10:30 Blue Christmas Service, 6 Choir, 7 HT: 10-2 Food Cupboard | 20 HT: TOPS 9-NOON ILC: Sr Center Exer.,10 | 21 ILC: Healthy Bones, 9 HT: 10-2 Food Cupboard | 22 | | | | | | | | | | | | | | | | | | | | | | | | | | | | | | | | | | | | | | | | | | |
| 23 4th Sun. of Advent SS 9, W 10:15 Service of the Word w/ CANTATA DEADLINE FOR Jan .NL | 24 closed Christmas Eve 4pm Family at HT 10pm Candlelight at ILC | 25 closed Christmas Day <i>Merry Christmas</i> | 26 Roe Vac day ILC: Healthy Bones, 9 HT: 10-2 Food Cupboard | 27 HT: TOPS 9-NOON ILC: Sr Center Exer.,10 | 28 ILC: Healthy Bones, 9 HT: 10-2 Food Cupboard | 29 | | | | | | | | | | | | | | | | | | | | | | | | | | | | | | | | | | | | | | | | | | |
| 30 1 Christmas No SS, W 10:15 service of LESSONS & CAROLS w/Communion [pastor—Wedding Rehearsal at Bethel] | 31 closed Sunday of Advent [pastor-Wedding at Bethel] | <div> <div>January 2019</div> <table> <tr> <td>S</td><td>M</td><td>T</td><td>W</td><td>T</td><td>F</td><td>S</td></tr> <tr> <td></td><td></td><td>1</td><td>2</td><td>3</td><td>4</td><td>5</td></tr> <tr> <td>6</td><td>7</td><td>8</td><td>9</td><td>10</td><td>11</td><td>12</td></tr> <tr> <td>13</td><td>14</td><td>15</td><td>16</td><td>17</td><td>18</td><td>19</td></tr> <tr> <td>20</td><td>21</td><td>22</td><td>23</td><td>24</td><td>25</td><td>26</td></tr> <tr> <td>27</td><td>28</td><td>29</td><td>30</td><td>31</td><td></td><td></td></tr> </table> </div> <div>Happy New Year!</div> | | | | | S | M | T | W | T | F | S | | | 1 | 2 | 3 | 4 | 5 | 6 | 7 | 8 | 9 | 10 | 11 | 12 | 13 | 14 | 15 | 16 | 17 | 18 | 19 | 20 | 21 | 22 | 23 | 24 | 25 | 26 | 27 | 28 | 29 | 30 | 31 | | |
| S | M | T | W | T | F | S | | | | | | | | | | | | | | | | | | | | | | | | | | | | | | | | | | | | | | | | | | |
| | | 1 | 2 | 3 | 4 | 5 | | | | | | | | | | | | | | | | | | | | | | | | | | | | | | | | | | | | | | | | | | |
| 6 | 7 | 8 | 9 | 10 | 11 | 12 | | | | | | | | | | | | | | | | | | | | | | | | | | | | | | | | | | | | | | | | | | |
| 13 | 14 | 15 | 16 | 17 | 18 | 19 | | | | | | | | | | | | | | | | | | | | | | | | | | | | | | | | | | | | | | | | | | |
| 20 | 21 | 22 | 23 | 24 | 25 | 26 | | | | | | | | | | | | | | | | | | | | | | | | | | | | | | | | | | | | | | | | | | |
| 27 | 28 | 29 | 30 | 31 | | | | | | | | | | | | | | | | | | | | | | | | | | | | | | | | | | | | | | | | | | | | |