

Seal Removal Instructions



Step 1 Place axle seal housing into counterbore of seal guide.



Step 2 Place Jaw A in cavity on top of insert.



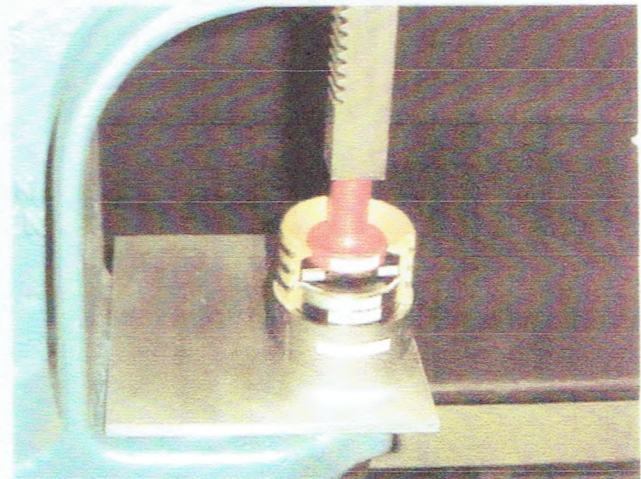
Step 3 Place Jaw B in cavity over screw.



Step 4 Screw handle onto Jaw A stud until tight.



Step 5 Assembly ready for arbor press.



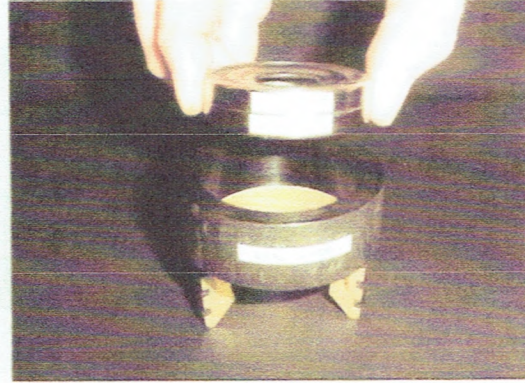
Step 6 Place on flat surface in arbor press. Push old insert seals into seal guide.

Seal Assembly Instructions



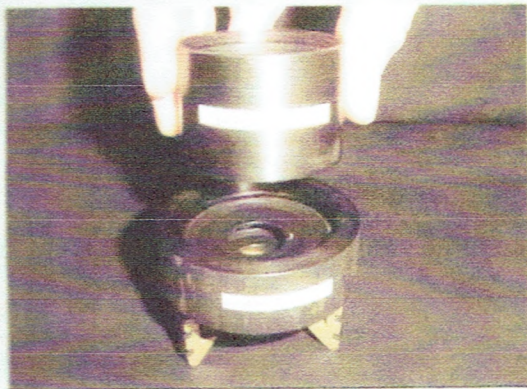
Step 1

Apply light film of lubricant to inserts or housing i.d. to facilitate assembly. Place counterbore side of seal guide down onto housing as shown.



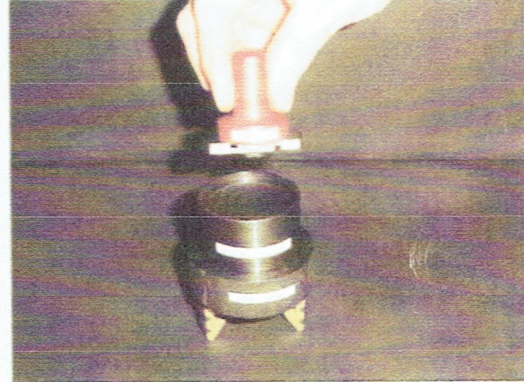
Step 2

Place new seal inserts into seal guide, open end of insert cup, facing up on bottom seal, and the open end of cup facing down on the top seal.



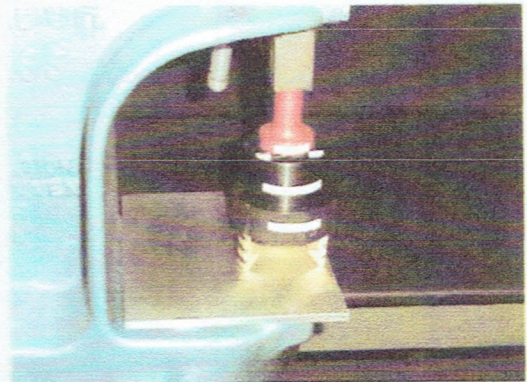
Step 3

Place install sleeve, with counterbore facing up, on top of inserts in seal guide.



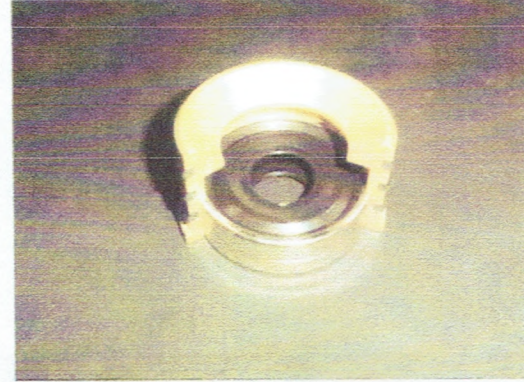
Step 4

Place handle, with A&B jaws, into counterbore on install sleeve.



Step 5

In a small press, with the axle seal housing on a flat surface, press inserts into housing.



Step 6

Pack area between the two inserts with a low-melting-point grease. Add proper o-rings. Part is ready for tube installation.