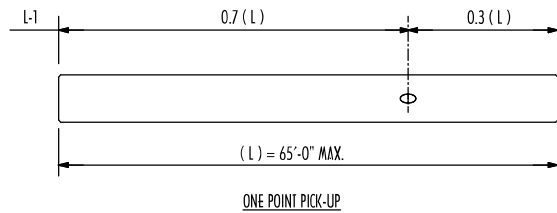
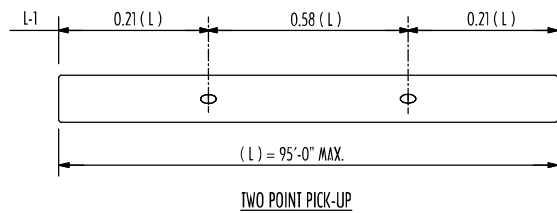


ELEVATION

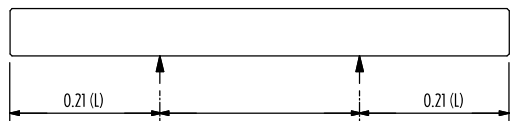


ONE POINT PICK-UP

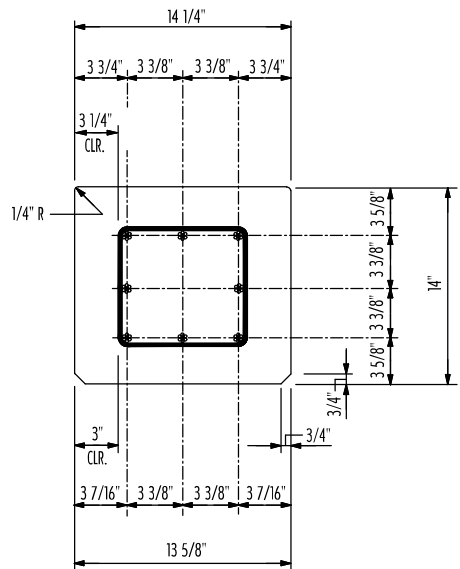


TWO POINT PICK-UP

PICK-UP POINT DIAGRAMS



STORAGE/SHIPPING POINTS



TYPICAL SECTION

CAST IN ITEMS		
MK. NO.	QTY.	DESCRIPTION
L1	2	1/2" STRAND LIFT HOOKS
SECTION PROPERTIES		
AREA (SQ. IN.)	196	WT. (LB./LF)
		198
		PERIM. (FT.)
		5.32
GENERAL NOTES		
1) CONCRETE STRENGTH = 6000 PSI @ 28 DAYS		
2) 1/2" DIA. STRAND TO HAVE A MINIMUM ULTIMATE STRENGTH OF 270 KSI AS PER ASTM A416 (A = 0.1531 SQ. IN.)		
3) WIRE SPIRAL TO BE W3.4 (5 GAUGE) COLD DRAWN WIRE		
4) STRAND TO BE CUT OFF FLUSH WITH PILE ENDS		
5) TENSION PER STRAND = 31.0K		
6) TRANSFER OF PRESTRESS FORCE @ 4000 PSI CONCRETE STRENGTH		
7) HANDLING LENGTHS BASED ON INCLUDING 50% IMPACT FACTOR AND MAX. TENSILE STRENGTH = $6\sqrt{3500}$		
8) LIFTING HOOKS ARE FOR MFG. PROCESS ONLY. THEY ARE NOT TO BE USED TO BRING THE PILE UNDER THE HAMMER		
9) EXACT PILE CAPACITY SHOULD BE DETERMINED BY A PROFESSIONAL GEOTECHNICAL ENGINEER		
10) PROPER DESIGN & DETAILING OF TENSION OR MOMENT CONNECTION TO PILE CAP IF REQUIRED, IS THE RESPONSIBILITY OF THE ENGINEER OF RECORD		
Prepared By: R JW Consulting International, Inc. 2518 Catalina Dr. Orlando, FL 32805 (407) 493-7573		
Prepared For: HENDERSON PRESTRESSED CONCRETE, INC. 822 ANCLOTE RD. TARPON SPRINGS, FL 34689 (727) 938-2828 hendersonprestressedconcrete.com		
DRAWN:	RJW	ISSUED (PRELIM.): 02/27/18
CHECKED:		ISSUED (PRODUCTION):
Project:		
14" 8W FDOT PILE		
		QUANTITY
Rev.	Date	Description
REVISIONS		
THIS DRAWING IS THE PROPERTY OF HENDERSON PRESTRESSED CONCRETE, INC. (HPC) AND SHALL NOT BE REPRODUCED BY ANY MEANS WITHOUT THE WRITTEN CONSENT OF HPC		
		DWG. NO.