

Porter Preston
61 Mattatuck Heights Road
Waterbury, CT 06705
ph 866-753-1113 fx 203-597-8828 www.porterpreston.com



Quality Wholesale Window Coverings
Contract • Hospitality • Healthcare • Residential



Quality Wholesale Window Coverings
Contract • Hospitality • Healthcare • Residential



ALTA
WINDOW FASHIONS

design simplified™

AUTOMATION

PRICING & REFERENCE GUIDE

Pricing effective January 18, 2021 and supersedes all previous pricing.
Subject to change by Alta Window Fashions.

AUTOMATION *from Alta*

AUTOMATION

Introduction	3
Why Automation?	4
Key Terms to Know	5
At a Glance Automation by System	6
Automation Basics	7

BLISS™ AUTOMATION

Introduction	9
Features and Available Products	9
Frequently Asked Questions	10
At-a-Glance Motor System by Product Matrix	11
Motor Options	12
Power Options	13
Control Options	14
BLISS Automation by Alta App	14
Solar Panel Tips and Considerations	15
Retail Pricing & Surcharges	16
QR Code Links to BLISS Programming and How to Videos	17

SOMFY AUTOMATION

Introduction	19
Features and Available Products	19
Frequently Asked Questions	20
At-a-Glance Motor System by Product Matrix.....	21
Compatible Third Party Automation Systems.....	21
WireFree Motor Options	22
Hardwired / AC Motor Options	23
Power Options	24
Hand Held Control Options	25
Wall Switch Control Options	26
MyLink™ App	26
Additional Roller Shade Information	27
Retail Pricing & Surcharges	28
QR Code Links to Somfy Programming and How to Videos	29

SIMPLICITY AUTOMATION

Introduction	31
Features and Available Products	31
At-a-Glance Motor System by Product Matrix	31
Frequently Asked Questions	32
Motor and Control Options	33
Power Options	34
Retail Pricing & Surcharges	35
QR Code Links to Simplicity Programming and How to Videos	36

POWERWAND MOTORIZATION

Introduction	38
Features and Available Products	38
Retail Pricing & Surcharges	38
Frequently Asked Questions	39
QR Code Links to Powerwand Programming and How to Videos	40

WARRANTY INFORMATION	41
-----------------------------------	-----------

AUTOMATION *from Alta*

HIGH TECH LOW STRESS

SMART SOLUTIONS FOR ALL



At Alta, we embrace innovation. Our convenient, state-of-the-art automation options allow you to effortlessly operate your Alta window coverings with a touch of a button using a wand, handheld remote, your smart device, or even your voice. You can program your shades to adjust automatically via an app or pair with today's intelligent home systems so you can keep pretty much everything in your home under control (kids not included.)

BLISS™ AUTOMATION BY ALTA



Enjoy a new level of purposeful ease! From the wirefree convenience of our rechargeable motors to the power of voice control. The BLISS Automation range cleverly crosses product lines!

SOMFY AUTOMATION



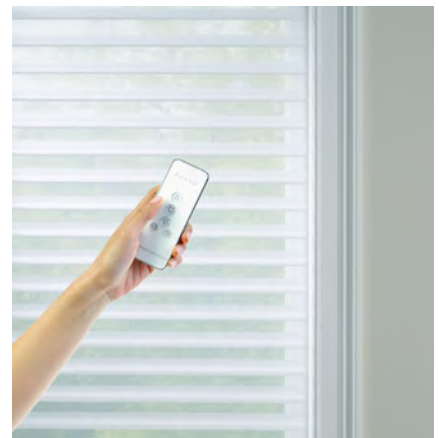
With over 50 years of motorization experience, Somfy offers a wide range of strong, quiet motors and a variety of control options to cover all types of applications and technologies.

*Find out more
about the
Somfy WireFree
line up*

*Scan this code or click
here to watch.*



SIMPLICITY AUTOMATION



Our Simplicity Automation is a no-frills motor system available across several popular product categories. Rechargeable battery powered motors offers reliable use.

AUTOMATION *from Alta*

WHY AUTOMATION?



SIMPLIFY THE EVERYDAY

Privacy and Security

Out of sight, but not out of reach. Operate your motorized window coverings with your smartphone, even when you are away from home.

Voice Control Operation

Controlling motorized window coverings is more convenient than ever before with the new Shades skill for most Amazon Alexa and Google Home enabled devices. Use the power of voice to open and close the shades. “Alexa, raise the Dining Room shades” Now we’re talking!

Energy Saving

You can’t program the weather, but you can program your motorized window coverings to help save on energy costs. Set your window coverings to open or close during the hottest – or coldest – times of the day. Pretty cool, right?

Home Automation Integration

Boost your windows’ IQ. Integrate your motorized window coverings with a compatible smart home system to synchronize light and privacy control for maximum convenience.

Alta Advantage SAFETY

We care about your kids. And pets, too. So when it comes to safety, we take our role seriously, beyond design and operation to awareness and education. We proudly carry the “Best for Kids” designation. Why? Tough independent laboratory testing proves it.



KEY TERMS TO KNOW

AC Wired Motors - AC motors require 120 VAC of electricity which is found in a typical outlet in a home or office. AC motors are either plugged into an outlet with a standard AC plug or require wiring by a licensed electrician.

Bi-directional Communication - This means that the control and position information can flow back and forth (2 way) from a controller/bridge to the motor and from the motor back to a controller/bridge. This allows the shade status to always be known.

Channel - Channels are used to organize motorized window coverings with their control options. A channel is either associated with a single motorized window covering or a group of motorized window coverings.

DC Motorization (Plug-in) - Shades are powered by an external battery or 12V / 24V DC transformer/plug similar to a cell phone charger. Low voltage wires are used so an electrician is not required, keeping installation costs minimal. Most DC motors can also be wired to a central distribution panel eliminating the need for multiple power adapters.

Favorite Position - This feature allows users to save preferred positions for their motorized window coverings. This memory feature provides quick access without having to fine tune the position of any given shade each time. Save it once and its always available.

Group Control - Group Control is when multiple motorized window coverings all respond to a signal at the same time and raise and lower accordingly. This is available with radio frequency communication products including handheld remotes, wireless wall switches and smartphone app.

Hardwired - This is an available power option in which the motor is wired directly to the home or building's electrical system for AC motors, or run back to a power and distribution panel for DC motors. It offers maintenance-free operation. The AC motor option requires a licensed electrician. For DC motor option an electrician is recommended.

Individual Control - Individual Control is when multiple motorized window coverings need to receive separate signals in order to raise or lower individually.

Limits - Limits represent the location where the motorized window covering starts and stops. There is an upper limit which is where the window covering stops when the UP button is pressed and a lower limit which is where the window covering stops when the DOWN button is pressed. Both the upper and lower limits are programmed and depend on the user's preference. These are typically set during fabrication according to the ordered window size.

Lithium Batteries (Li-ion) - Lithium batteries offer a greater heat tolerance, which is especially important in window applications.

"MY" Button (Somfy) - This button on the remote-control acts as a stop button when the motorized window covering is in motion. It also sends the shade to the programmed intermediate position when the shade is already stopped.

Power Panel - Common enclosure box designed for 12V or 24V DC motors.

Radio Frequency (RF) - Radio frequency is another protocol that motors use with their control options. Direct line-of-sight is not required to send a signal to a motor but similar to a garage door opener, the motor must be within range to operate. RF allows for either individual control or group control. It offers simplified integration with home automation.

Rechargeable Battery/WireFree (Internal or External) - Requires no electrical wiring, no external battery pack and no complicated installation. Motors will operate 6-9 months between charges based on average size and daily use. Li-ion batteries can be recharged up to 500 times and take approximately 5 hours to fully recharge. Requires the purchase of at least one charger.

Wifi Bridge / Hub - A Wifi Bridge or Hub is the central area of communication between devices for automation and control. Once connected to a WiFi network, it enables operation of motors from a smartphone with the use of an app. The bridge/hub also integrates with a variety of smart home platforms and home automation systems for complete customization of window covering control.

AUTOMATION *from Alta*

AT A GLANCE AVAILABILITY

	SYSTEM	BLISS Automation by Alta	Somfy Automation	Simplicity Automation
PRODUCTS	Dual Shades	✓	✓	✓
	Faux Wood (tilt)	✓	✓	
	Honeycomb	✓		✓
	Natural Wovens	✓	✓	✓
	Roller Shades	✓	✓	✓
	Window Shadings	✓		✓
	Wood Blinds (tilt)	✓	✓	
MOTOR FEATURE	Adjustable Speed Motors	✓	✓	
	Motor Sound Level			
	Motor Strength Levels			
POWER OPTIONS	Rechargeable Li-ion Battery	Standard	✓	✓
	Solar Power Option	✓	✓	✓
	Hardwired Power		✓	
	Plug-In Power		✓	✓
CONTROL TYPES	Remote Control	✓	✓	✓
	Wall Switch	✓	✓	✓
	Smartphone/Tablet (via app)	✓	✓	✓
AUTOMATION FEATURES	App Compatible	✓	✓	✓
	Wifi Bridge	✓	✓	✓
	Home Automation Integration <small>I.E. IFTTT / SMARTHINGS / CONTROL4</small>	✓	✓	✓
	Voice Control Operation <small>I.E. AMAZON ALEXA / GOOGLE HOME / SIRI</small>	✓	✓	✓

Rechargeable motors require the purchase of plug-in charger (at least one per order).
Wifi Bridge/interface is required for app, voice control and home automation integration.

AUTOMATION BASICS

WHAT YOU NEED TO KNOW

Shades will raise/lower at different speeds

When operating a group of motorized window coverings on the same channel, there should be no expectation that each shade or blind will raise, lower or tilt at the exact same speed. Variations in the battery charge, wire run length or the size of the shade will affect the shade/blind performance.

Shades will arrive with the upper and lower limits set

At our plant, your motorized blind or shade will always have the upper and lower limits set with the shade being fully open or closed. Additional pairing and further programming is required onsite.

Batteries will arrive fully charged

We fully charge all batteries before they leave our factory, it is important for installers to keep an extra charger handy just in case this needs to be done on site.

Motor may be in Sleep Mode (inactivated)

To preventing motors from being activated during transit, they are placed in sleep mode. Please follow programming instruction to activate the motor before pairing to the remote.

Best practices for all motor systems

Metal can impede radio reception and may have a negative effect which will lower the range. For optimal radio performance it is best to have the motor antenna exposed at all times without interfering with movement of the shade.

AUTOMATION STEP-BY-STEP CHECKLIST

STEP 1 - Choose the motor (some products do not have a choice of motor systems)

Be sure to double check the minimum and maximum sizes that the motor will be able to accommodate, this will vary depending on the configuration.

STEP 2 - Choose or confirm the power source for the given motor (some motors do not have a choice of power options)

If the motor you selected is powered by:

- External Battery Pack: Be sure to order a charger or if needed a Solar Panel kit. Will you need a battery pack extension or charger extension?
- Built in Rechargeable Battery: Be sure to order a charger or if needed a Solar Panel kit. Will you need a charger extension?
- Plug-in Power: Will you need a longer transformer cord for any of the shades?
- Hardwired: Will you need longer cable for any of the shades?

STEP 3 - Choose your control options

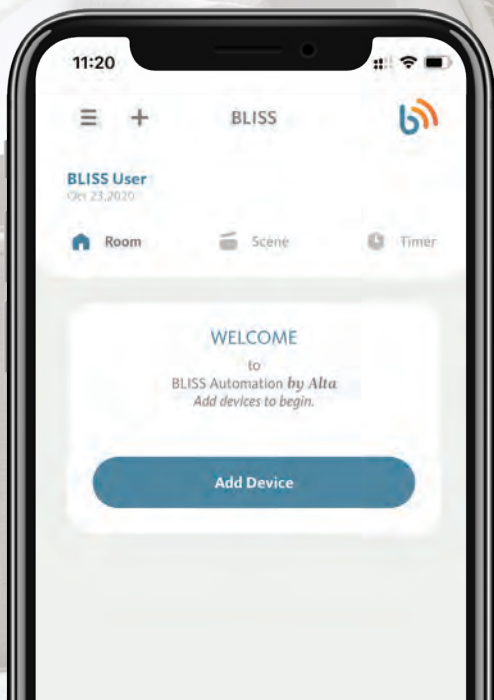
- Remote Control: One per order is usually needed and helps to speed up programming of shades
- Wall Switch: Not sure? These can always be added to an order after installation
- App or Voice Control: Be sure to order a Bridge or Mylink to connect the shades to the network.

STEP 4 - Home Automation / Voice Command

- Will you need to integrate to a third party system or do you plan on using Google Assistant or Amazon Alexa? if so, be sure to order a Bridge or MyLink to connect shades to the home network

STEP 5 - Accessories

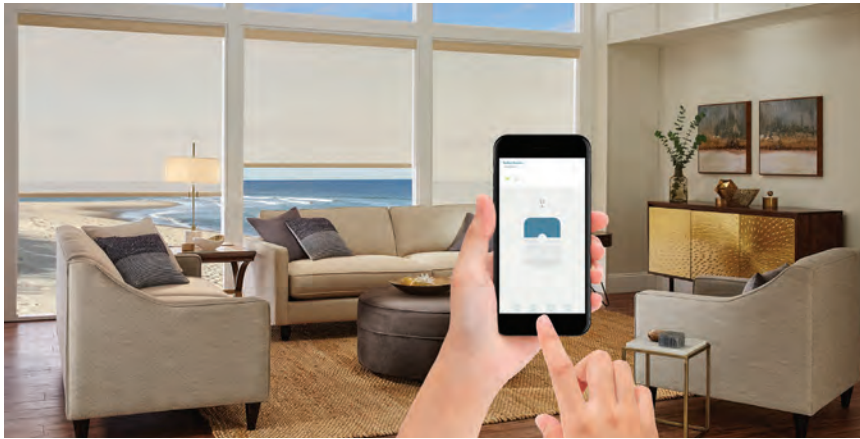
- Solar Panel Kit, not sure if this is an option? [Check the Solar Panel Tips and Considerations page for help.](#)
- RTS Repeater (Somfy)



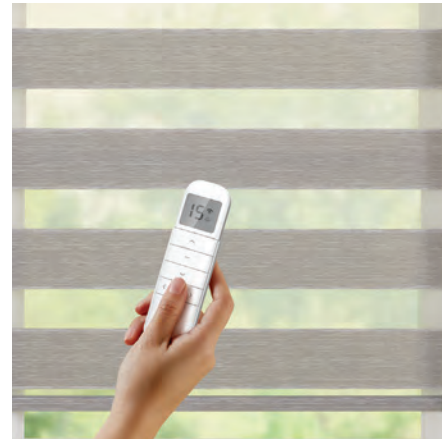
BLISSTM
AUTOMATION
by **ALTA**

AUTOMATION *from Alta*

BLISS™ AUTOMATION



AUTOMATION FOR LIFE

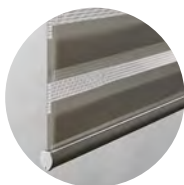


Enjoy a new level of purposeful ease with our range of BLISS™ Automation by Alta systems. From the wirefree convenience of our rechargeable motors to the power of voice control operation, BLISS Automation is a solid solution for advanced yet simple light control and connected design.

FEATURES:

- Enjoy whole home automation with BLISS radio frequency motors created for a range of products, for completely cord-free operation designed to be used time and time again.
- Say goodbye to batteries with state-of-the-art lithium-ion rechargeable batteries that can last up to 500 up/down cycles on a single charge.
- Plug & play! The no fuss wifi set up of the BLISS Bridge makes operating window coverings with voice control or smartphone device a snap.
- Put your mind at ease with strong 2-way radio communication that assures a reliable connection for real time monitoring of motor battery life and shade status.
- Gain ultimate control using features like timers and scenes each set to your needs, at home or away using the BLISS™ Automation by Alta app.

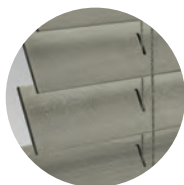
AVAILABLE ON:



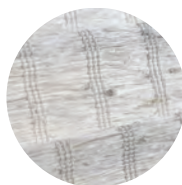
Dual
Shades



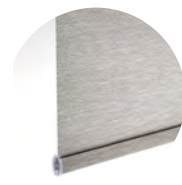
Honeycomb
Shades



Faux
Wood



Natural
Wovens



Roller
Shades



Window
Shadings



Wood
Blinds

BLISS™ AUTOMATION

FREQUENTLY ASKED QUESTIONS

What is BLISS Automation?

The BLISS Automation Program brings the power of automated motors to your window treatments, integrating BLISS controls, Google Assistant, Amazon Alexa and the BLISS app with other home integration devices to create the perfect ambiance morning, noon and night.

What is the range of products that can be motorized with BLISS?

The BLISS Automation portfolio is a comprehensive range of motors for a variety of motorized window coverings, including Roller Shades, Woven, Honeycomb Shades, Sheer Shadings, Dual Shades and Horizontal Tilt Blinds.

What is the warranty?

BLISS motors are covered by a 5 year warranty.

How do BLISS Motors Communicate?

BLISS Motors use radio frequency (RF) to communicate and is the most effective telecommunication technology. BLISS runs on a frequency of 433.92 MHz and is bi-directional, which means that control and position information can flow from a controller/bridge to the motor and from the motor back to a controller/bridge.

How many BLISS automated window covering motors can be controlled by a hand held remote?

An unlimited number of window covering motors can be set to the same channel as one single channel remote, and BLISS remotes have up to 15 channels.

How does the BLISS Bridge communicate?

The bridge has Wi-Fi to communicate with mobile devices and internet routers. It also utilizes radio frequency (RF) communication to send and receive messages to BLISS motors. The BLISS Bridge has a range of up to 60ft.

Does the motor battery ever need to be replaced?

No, the battery is designed for the full life of the motor.

How long will the battery last before it needs to be recharged?

It depends on many factors like the size and weight of the window covering that the motor is operating long with how many times a day it is operated. Generally, each charge will last approximately 500 up/down cycles on a single charge.

How long does it take to fully charge the motor?

The first charge will take 6 subsequent hours of charging. You cannot over charge the battery. The motor and battery both have integrated overcharge protection circuits. This means that the battery will limit the charge it will accept if plugged in longer than necessary and the motor turns into a hard-wired solution with a battery backup.

Can I use my cell phone charger to charge the motor?

Yes, the motor/battery will accept any Micro-USB charger. Make sure to use a 5V charger in order to charge BLISS motors properly.

What is channel 0 for on my remote control?

All motors that are programmed to the same remote, automatically respond to channel 0. For example, on channel 0, pressing the up button will move all blinds that are programmed to that remote up.

Can I hide channels that being used on my remote control?

Yes, you can hide unused channels in your BLISS remote, e.g. if there are 5 motors on the job you can select it to be a 5-channel remote. [Link to the BLISS Remote Control - How to Hide Channels Video](#)

Can I lock the remote control to save the programming functions from being accidentally changed?

Yes, the remote control contains a switch on the backside that is used to lock the remote control and save all of the programming. [Link to the BLISS Remote Control Users Guide](#)

AUTOMATION *from Alta*

BLISS™ AUTOMATION

AT A GLANCE MOTOR AVAILABILITY

MOTOR	POWER	Dual Shades	Faux/ Wood Blinds	Honeycomb Shades	Natural Wovens	Roller Shades	Window Shadings	Home Automation Compatible*
BLISS Lift	External Rechargeable Battery Pack, Solar**			✓				✓
BLISS Tilt	External Rechargeable Battery Pack, Solar**		✓					✓
BLISS 1.1	Built-in Rechargeable Li-ion battery, Solar**	✓			✓	✓	✓	✓
BLISS 2.0	Built-in Rechargeable Li-ion battery, Solar**					✓		✓

All motors require the purchase of plug-in charger (recommend one per order), it is required to charge the battery.

*A BLISS Bridge is required for app, voice command and home automation systems.

** The Solar Panel is a recharging option and is not an independent power supply

COMPATIBLE HOME AUTOMATION SYSTEMS:



Scan this code or
Click here to watch the
How to Set up Google
Home video



Scan this code or
Click here to watch the
How to Set up Amazon
Alexa Skills video

BLISS™ AUTOMATION

MOTOR OPTIONS & BENEFITS

MOTOR OPTIONS:

BLISS Lift

Honeycomb Shades

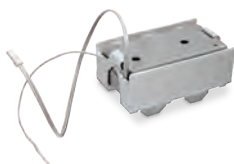


- 0.6 Nm DC Radio Frequency motor (12V)
- Requires external Rechargeable Battery Pack
- Adjustable speed setting: 34 or 40 rpm (default: 50 rpm)
- Sound level ~48dB
- Min Width: 18" (20" per panel for 2 on 1) / Max Width: 96"

Power Supply: External Rechargeable Battery Pack, Battery Charger, Solar Panel

BLISS Tilt

Wood/Faux Wood



- 1.0 Nm DC tilt Radio Frequency motor
- Requires external rechargeable battery pack
- Adjustable speed setting: 15-20 rpm (default: 12 rpm)
- Sound level ~50dB
- Not available on blinds with Lift & Lock
- Min Width: 20" / Max Width: 96"

Power Supply: External Rechargeable Battery Pack, Battery Charger, Solar Panel

BLISS 1.1

Roller/Dual Shades/Window Shadings/Woven



- 1.1 Nm RF motor with built-in rechargeable 8V lithium-ion battery
- Lasts up to 500 up/down cycles on a single charge
- LED low battery indicator
- Adjustable speed control: 20 or 24 rpm (default: 28 rpm)
- Sound level ~46dB
- Designed for small to medium-sized shades
- Min Width Roller Shades: 22 1/2" net / Max Width: Varies by fabric
- Min Width Dual/Window Shadings: 24" net / Max Width: Varies by fabric
- Min Width Natural Wovens: 30" net / Max Width: Varies by fabric

Power Supply: Battery Charger, Solar Panel

BLISS 2.0

Roller Shades



- 2 Nm RF motor with built-in rechargeable 12V lithium-ion battery
- Lasts up to 500 up/down cycles on a single charge
- LED low battery indicator
- Adjustable speed control: 20 or 24 rpm (default: 28 rpm)
- Sound level ~47dB
- Designed for medium-large sized shades
- Min Width: 30" net / Max Width: Varies by fabric

Power Supply: Battery Charger, Solar Panel

The minimum and maximum sizes listed are for the given motor system and may vary depending of the product, fabric and features selected. See individual product Retail Price List for details.

BLISS™ AUTOMATION

POWER & ADDITIONAL OPTIONS

POWER SOURCES:

BLISS Charger



- Used to charge BLISS 1.1 and 2.0 motors (1 per order is recommended)
- Fully charges motors in 4-6 hours
- Built in LED indicator
- The charging cable is 156" long
- Charger extension cables are available in 8" or 48" lengths and can be daisy chained together to create longer lengths

BLISS External Battery Pack



- Standard power source for BLISS Lift and BLISS Tilt motor system
- Lasts up to 500 up/down cycles on a single charge
- Rechargeable Li-ion battery, recharges in approximately 6 hours
- Micro USB charger with cable
- Dimensions: 10.44" L x 1" W x 1" D

BLISS Solar Panel

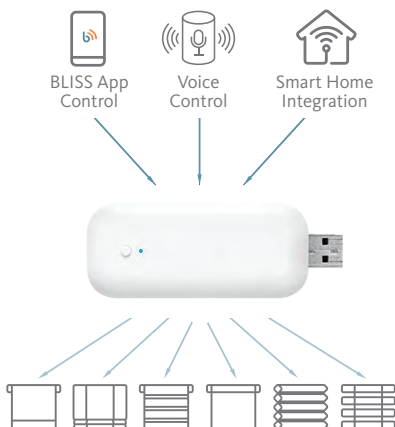


- Utilize sunlight to harvest power for BLISS motorized shades
- One Solar Panel per shade or blind is needed
- Easy to install and the low profile design is easy to conceal
- 5V Charger with renewable solar energy
- Compatible with BLISS Li-ion motors and BLISS external battery pack
- Not recommended on north facing windows
- Micro USB charging cable, 59" long (included)
- Dimensions: 18.7" L x 2" W x .30" D

[Link to the BLISS Solar Panel Installation Guide](#)

ADDITIONAL AUTOMATION OPTION:

BLISS Bridge



- The BLISS Bridge connects to home networks to allow window coverings to be controlled via the BLISS App, voice control or through additional connected IoT systems
- Allows 2-way radio frequency communication between motors and devices
- Easy to install USB device to any Wi-Fi connection, just Plug & Play
- Covers a range of 60 feet, larger homes may require additional bridges
- Compatible with 2.4 GHz networks only (802.11 b/n/g)
- Seamless integration with Amazon Alexa, Google Assistant, Apple Shortcuts, Siri and IFTTT, Smart Phones, Tablets and Smart Watches
- Smart phone version: Apple IOS-10 or greater / Android-4.1 or greater
- The USB power supply used must provide 5V/1 Amp of power
- Connect up to 30 devices per Bridge, up to 5 accounts
- Connect up to 5 accounts per Bridge
- Connect up to 5 Bridges per location: 20 rooms / 20 scenes / 20 Timers
- Dimensions: 3.5" L x 1.25" W

[Link to the BLISS Bridge Quick Start Guide](#)

AUTOMATION *from Alta*

BLISS™ AUTOMATION

CONTROL OPTIONS

CONTROL OPTIONS:

BLISS 15 Channel Remote



- Operates an unlimited number of BLISS motorized window coverings
- 15 Channel remote features a contemporary design with push button controls
- Activate the favorite position with a touch of a button
- Locking feature to prevent accidental programming changes
- Hide unused channels for faster channel selection and scrolling
- A convenient holder allows the remote to be mounted on a wall
- Dimensions: 5.5" L x 1.69 W

[Link to the BLISS Remote Control Programming and Users Guide](#)

BLISS 15 Channel Surface Mounted Wall Switch



- Operates an unlimited number of BLISS motorized window coverings
- Features a clean, modern design with easy to use controls
- Activate group control and favorite position with a touch of a button
- Locking feature to prevent accidental programming changes
- Hide unused channels for faster channel selection and scrolling
- No need to cut in to wall with the wireless design
- Dimensions: 3.4" L x 3.4" W x 0.7" D

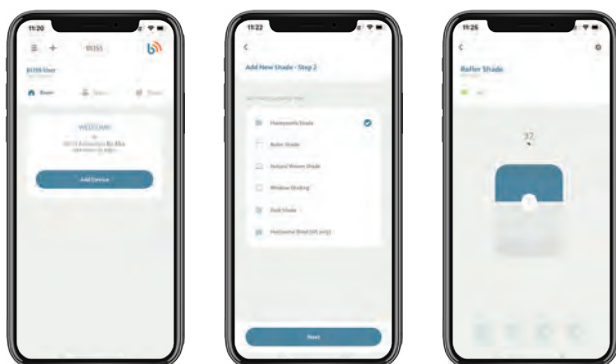
[Link to the BLISS Wall Switch Guide](#)

BLISS App



- Enable simple, intuitive control from any smartphone
- Compatible with both iOS and Android devices
- Features like scheduling and remote access allow users to control motorized window coverings at home or while away
- Purchase of BLISS Bridge is required for use with app

[Link to How to set up the BLISS App Video](#)



[Click icon to download](#)

BLISS™ AUTOMATION

SOLAR PANEL TIPS AND CONSIDERATIONS

WHAT YOU NEED TO KNOW ABOUT SOLAR POWER:

Consider the geographic location of the installation

Understanding the sun's motion relative to a site is a crucial element to predict the solar panel performance. A solar panel located in Texas will harvest more energy than a unit installed in Canada (considering both facing south, using similar window).

Consider the direction the window is facing

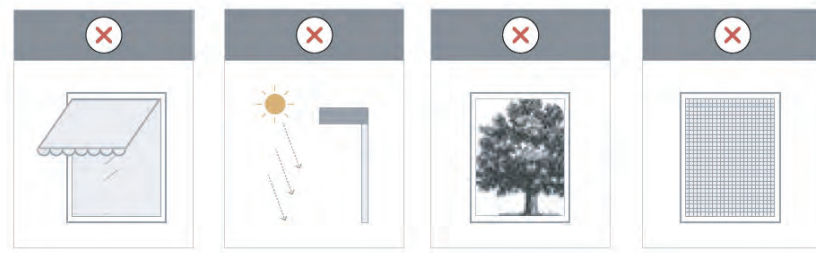
The Solar Panel may not be a good fit for every window. In the summer, the sun rises higher in the sky than in the winter months. The further north, the lower the midday winter sun will be. Due to the sun's position, Solar panels installed facing north produce 4 times less energy than a device installed facing south. For this reason, we do not recommend the use of solar panel on windows facing North.

Define the best location to install

The solar panel is designed for indoor use only. To maximize the performance of the solar panel, it should be installed as close as possible to the window glass, allowing as much natural light as possible to reach the panel. Any element between the Sun light and the solar panel will impact the charging time, and in some situations, inhibit its use.

Things to consider:

- Awnings
- Deep Eaves
- Trees
- Tall buildings and walls
- Insect Screen



Other not so obvious elements can result in low performance of the solar panel, such as:

- Tinted windows
- High performance glass (also known as energy efficiency glass)
- Multi panel glass
- Any window with treatment that reduces the light transmission below 65%
- Window dividers overlapping solar panel

How efficient my solar panel will perform?

Besides all of the elements described above impacting how much energy will be harvested from the sun, there is also the question of how fast the energy will be drained due to:

- Shade composition (fabric weight)
- Number of cycles per day
- Size of shade (how long the motor will run per cycle)

The answer for these questions should be considered to evaluate if solar panel is the best fit for the application. Keep in mind, each shade/blind will need its own solar panel to connect to.

For additional Solar Panel installation information, please refer to the [BLISS Solar Panel Installation Guide](#).

BLISS™ AUTOMATION

INFORMATION & PRICING

ROLLER SHADE TOP TREATMENT AND CONTROL SIDES BY MOTOR

Motor	No Top Treatment	Deluxe Valance	Fabric Cornice	Curved Cassette	Square Cassette	R-Series Fascia	Skyline Fascia	Pocket
BLISS 1.1	Both	Both	Both	Both	Both	NA	Both	Both
BLISS 2.0	Both	Both	Both	Both	Both	NA	Both	Both

RETAIL SURCHARGES

The Automation cost factor is different from blinds/shades. If you need to access your cost factor, refer to page 4 in the General Information Guide.

MOTOR SYSTEMS

BLISS Lift, includes external battery pack

BLISS Tilt, includes external battery pack

BLISS 1.1

BLISS 2.0

PRICING

\$240

\$240

\$240

\$280

POWER ACCESSORIES

BLISS Charger (1013680)

BLISS Solar Panel (62201000)

BLISS External Battery Pack 48" Extension Wire (62207000)

BLISS 8" Charger Extender (1013119)

BLISS 48" Charger Extender (1013115)

PRICING

\$30

\$120

\$6

\$6

\$10

CONTROL OPTIONS & ACCESSORIES

BLISS 15 Channel Hand Held Remote (62101C00)

BLISS 15 Channel Surface Mounted Wall Switch (62109C00)

BLISS USB Bridge (62102C00)

PRICING

\$50

\$50

\$100

The above pricing represents the motorization surcharge that needs to be added to the price of a single blind. Refer to the individual product reference guides for additional pricing and surcharge information.

BLISS™ AUTOMATION

QR CODE QUICK LINKS

CHECK OUT OUR HOW TO PROGRAMMING AND BLISS APP VIDEOS

How to Videos / BLISS Bridge and App

To see all of the BLISS Automation How to Videos on YouTube, [click here](#)

Open your Camera app and point it steadily for 2-3 seconds towards the QR Code you want to scan



Adding a
BLISS Bridge



Adding Devices
to the app



Pairing with
Amazon Alexa



Pairing with
Google Home



Scene
Settings



Setting Limits
and Favorites



Timer
Settings

How to Videos / Remote Control



Adding or
Removing
Remotes



Adjusting
Motor
Speed



Hiding
Unused
Channels



Pair/Unpair
a Remote
Control



Setting
a Favorite
Position



Setting
Upper/Lower
Limits



Toggle
Roller/Sheer
Mode



POWERED by
somfy®

AUTOMATION *from Alta*

SOMFY® AUTOMATION

ADVANCED TECHNOLOGY, ULTIMATE CONTROL

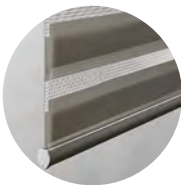


Experience the most options motorization has to offer with Somfy motorized window coverings. With more than 50 years of motorization experience, they offer a wide range of strong quiet motors and a variety of control options to cover all types of applications and technologies. Keep your home connected with the ability to integrate Somfy motorized window coverings into a multitude of home automation systems.

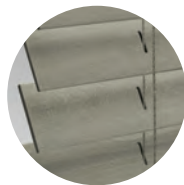
FEATURES:

- Enjoy every aspect of motorization with Somfy RTS® systems and controls designed with customization in mind.
- The myLink™ App allows users to operate their window coverings remotely or create timers or scenes that are personalized for any lifestyle.
- Each system allows for voice command operation using Amazon Alexa, & Google Assistant via IFTTT.
- Connect with 3rd party home automation systems for complete smart home integration.
- Create a relaxing and peaceful environment with the silent technology of the Ultra-quiet motor systems, each available on a wide variety of window coverings.
- Endless torque motor options powered by the highest standards on the market to power multiple shades or larger opening shades.

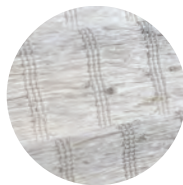
AVAILABLE ON:



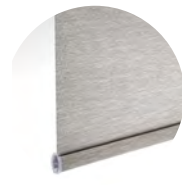
Dual Shades



Faux Wood Blinds



Natural Wovens



Roller Shades



Wood Blinds

SOMFY® AUTOMATION

FREQUENTLY ASKED QUESTIONS

How are Somfy motorized window coverings powered?

There are four main power options for Somfy motorized window coverings:

WireFree™ Rechargeable Battery Power - In this option, the motor is powered by a rechargeable lithium-ion battery (external pack or built in motor). There's no need for an electrician to wire your motorized shades, which minimizes installation time and cost.

Plug-In Power (DC) - With this power option, the motor plugs directly into a standard outlet. This is a good option for windows located close to an outlet or power source. The benefit of plug-in power is that it allows for maintenance-free operation. No need to worry about changing batteries!

Wired Power (AC) - In this option, the motor is typically hardwired into the home or building's electrical system. This system of power could work for any home but does typically require the use of an electrician. The major benefit, however, is the maintenance-free operation of your motorized product.

Solar Pack Power - The WireFree Solar Pack offers an energy-efficient alternative for powering motorized products by harnessing renewable solar energy to power motorized window coverings. It is easy to install and does not require an electrician.

Can I control Somfy motorized window coverings with an app?

Yes. The MyLink can be used for connecting to home automation in many applications as well via Wifi.

What is the battery life of the Somfy WireFree™ motor systems?

The battery life will vary depending on the size of your window covering and the frequency of use. In general, users can expect approximately one year of operation for their WireFree Somfy motors. This estimate is based on one cycle per day use, with a cycle being the shade moving up once and down once.

What is RTS?

RTS is a radio technology that can communicate with motorized products reliably up to 20 feet and from up to 65 feet in optimal conditions. There is no need to point or aim the remote or control device at the window covering because RTS is omni-directional so the radio waves travel through walls. RTS technology works with a variety of Somfy controls including hand-held remotes, wall switches, the myLink app, voice control, and sensors.

What is a channel on a Somfy remote or wall switch?

A channel is either associated with a single motorized window covering or a group of motorized window coverings. Depending on the type of control and technology being used, controls are available in single channel and/or multichannel versions. Channels are used to organize motorized window coverings with their control counterpart(s). This could mean a hand-held remote or a wall switch with multiple channels to control Somfy-powered products in whatever configuration needed.

Can I combine different types of controls to operate my motorized shades and blinds?

Whether you want to use a wall switch, an app, voice control or a hand-held remote, Somfy has a control option for you. You can use any combination of Somfy RTS controls. Mix and match remotes, wall switches, timers and sensors for up to 12 devices or channels per window covering.

What smart home systems can I use to control my motorized shades and blinds?











With Radio Technology Somfy® (RTS) motors, you can integrate with the following smart home systems: Savant, Crestron, Control4, Leviton, RTA, AMX, ELAN, URC, Wink, Vantage, Nexia, SmartThings, Amazon Alexa

[For more Somfy FAQs, go to \[SomfySystems.com/en-us/support\]\(https://www.somfy.com/en-us/support\)](https://www.somfy.com/en-us/support)

SOMFY® AUTOMATION

AT A GLANCE AVAILABILITY

MOTOR SYSTEM OPTIONS BY PRODUCT

	MOTOR	QUIET LEVEL	MOTOR STRENGTH	POWER	ROLLER SHADES	DUAL SHADES	NATURAL WOSENS	FAUX/ WOOD BLINDS	APP/HOME AUTOMATION COMPATIBLE*
12V DC	Tilt Only 50 WireFree™ RTS			Transformer, External Li-ion Battery Pack, Solar				✓	✓
	Roll Up 28 WireFree™ RTS			Transformer, External Li-ion Battery Pack, Solar	✓	✓	✓		✓
12V DC Built-in Li-ion	Sonesse® ULTRA 30 WireFree™ RTS			Internal Li-ion Battery, Solar	✓				✓
24V DC	Sonesse® 30 RTS			Transformer Plug-in	✓				✓
120V AC	Sonesse® 50 RTS			Hardwired AC Power	✓				✓
	Sonesse® ULTRA 50 AC			Hardwired AC Power	✓				✓

All controls are compatible with RTS motors, Situo 5 Variation not sold with roller or woven shades

*Additional Interface is required.

COMPATIBLE THIRD PARTY AUTOMATION SYSTEMS :



SOMFY® AUTOMATION

MOTOR OPTIONS

WIREFREE MOTOR OPTIONS:

Tilt Only 50 WireFree™ RTS

Wood/Faux Wood



- 1.0 Nm DC tilt motor
- Great for hard to reach windows and where wiring may be a challenge
- Sound level < 56 dBA
- Not available on blinds with Lift & Lock
- Minimum Width: 20" net (22" net with tapes) / Max Width: 96"*

Power Supply: External Rechargeable Battery Pack, Plug-In, WireFree Solar Panel
[Link to RTS Motors Quick Start Programming Guide](#)

Roll Up 28 WireFree™ RTS

Roller Shades/Dual Shades/Natural Woven



- 1.1 Nm motor
- LED low battery indicator
- Adjustable speed control (10-28 rpm) with soft start and soft stop feature
- Sound level 48 dBA - 56 dBA
- Designed for small to medium-sized shades
- Min Width Dual Shades: 18" net / Max Width: varies*
- Min Width Natural Woven Shades: 19" net / Max Width: varies*
- Min Width Roller Shades: 17" net / Max Width: varies*

Power Supply: External Rechargeable Battery Pack, Plug-In, WireFree Solar Panel
[Link to RTS Motors Quick Start Programming Guide](#)

Sonesse® ULTRA 30 WireFree™ RTS

Roller Shades



- 2 Nm ultra quiet motor with built-in Li-ion battery
- LED low battery indicator
- Adjustable speed control (10-28 rpm) with soft start and soft stop feature
- Sound level < 45 dBA
- Designed for medium-sized shades
- Min Width: 29" (1-1/2" tube) & 29-1/2" (2" tube) / Max Width: varies*

Power Supply: Battery Charger or WireFree Solar Panel

[Link to Sonesse Ultra 30 WireFree RTS Video](#)

[Link to Sonesse Ultra 30 WireFree RTS Programming Guide](#)

*The minimum and maximum sizes listed are for the given motor system and may vary depending of the product, fabric and features selected. See individual product Retail Price List for details.

SOMFY® AUTOMATION

MOTOR OPTIONS

PLUG IN & HARDWIRED MOTOR OPTIONS:

Sonesse® 30 RTS

Roller Shades



- 2 Nm plug-in quiet operation motor (24V)
- Wiring: 2 wire 16-22 gauge 1.8 Amps at peak load
- Motor lifts up to 23 pounds and comes on a 1 1/2" tube
- Adjustable speed control: 10-28 rpm (default: 28 rpm)
- Sound level 44dBA~47dBA depending on speed
- Designed for medium-sized shades
- Available with medium and large cassette, 3" and 4" fascia, pocket headrail
- Utilizes Skyline brackets
- 1 motor per shade, coupled shades are not available
- Min Width: 18 1/2" / Max Width: 108"*
- Max length for shades under 72" wide is 132"

Power Supply: Plug-in (24 V DC transformer) / Hardwired (2 wire pigtail)

[Link to RTS Motors Quick Start Programming Guide](#)

Sonesse® 50 RTS

Roller Shades



- 6 Nm quiet operation motor (120V)
- Wiring: 3 wire 14-16 gauge, 1.2 Amps at peak load
- Motor lifts up to 52 pounds and comes on a 2", 2 1/2", 3", 3 1/4" tube
- <= 44 decibels of running noise
- Designed for larger shades
- Up to 3 shades can be coupled side-by-side to operate with one motor
- 10' cord is standard (3 wire pigtail)
- 1.5', 3', 6', 10' and 24' plug in cables are available (surcharges apply)
- Min Width: 33" / Max Width: 162"* / Max Length: 168"*

Power Supply: Hardwired

[Link to RTS Motors Quick Start Programming Guide](#)

Sonesse® ULTRA 50 RTS

Roller Shades



- 6 Nm ultra quiet operation motor (120V)
- Wiring: 3 wire 14-16 gauge .95 Amps at peak load
- Motor lifts up to 52 pounds and comes on a 2", 2 1/2", 3 1/4" tube
- Less than or equal to 38 decibels of running noise at 24 rpm
- Designed for larger shades
- 10' cord is standard (3 wire pigtail)
- 1.5', 3', 6', 10', 24' plug in cables are available (surcharges apply)
- Up to 3 shades can be coupled side-by-side to operate with one motor
- Min Width: 39" / Max Width: 162"* / Max Length: 168"*

Power Supply: Hardwired

[Link to RTS Motors Quick Start Programming Guide](#)

[Link to Sonesse Ultra 50 Quiet Motor Video](#)

*The minimum and maximum sizes listed are for the given motor system and may vary depending of the product, fabric and features selected. See individual product Retail Price List for details.

SOMFY® AUTOMATION

POWER OPTIONS

POWER OPTIONS:

Rechargeable External Battery Pack



- External Li-ion battery used to power wirefree external motors
- 500 Uses per charge
- Discreet design allows for placement in smaller window openings
- Charges with 12V plug-in charger (9 foot cord)
- Extension cables are available (10", 48" and 96")
- Dimensions: 9.8" L x 1" W x .9" D, cable length: 6"

[Link to Rechargeable Battery Pack Quick Guide](#)

WireFree™ Solar Kit



- Patented technology uses sunlight to power motorized window coverings.
- Utilizes 10 AA nickel metal hydride (Ni-MH) batteries to store electrical energy
- Includes solar panel, Y harness, reloadable battery tube and mounting kit
- Compatible with most Somfy WireFree window coverings.
- Rapid charger kit is available
- Panel Dimensions: 11.85" L x 1.57" W x .43" D

Plug-in Transformer



- 12V or 24V DC plug-in power cord
- Plugs directly into a standard electrical outlet, includes 5' cord
- Maintenance free, no need to change batteries
- May require an electrician to add an outlet
- 12V is optional power supply for Roll Up 28 and Tilt Only 50 WireFree
- 24V is the standard power supply for Sonesse 30 RTS 24V motor

WireFree™ Lithium-ion Charger



- Conveniently charge WireFree lithium-ion motors and external rechargeable battery packs
- Required on WireFree motor systems, at least 1 per order (unless transformer is selected for Tilt Only WireFree 50)
- Includes 81" long cord
- 8" and 94.5" long extension cables are available

HOME AUTOMATION INTERFACES:

16 Channel Universal RTS Interface



- Allows user to convert infrared, RS232 and RS485 protocol to RTS to allow for third party control
- Offers 16 channels
- Range of 65 feet
- Powered by 9V-15V DC wall plug

SOMFY® AUTOMATION

CONTROL OPTIONS

CONTROL OPTIONS:

Situo® 1 and 5



- Single and 5 channel RTS hand held remote
- Classic ergonomic design that can control a variety of Somfy motorized systems
- Control one motorized product, or a group of motorized products per channel
- Set a favorite position for quick access for individual or a group control
- Optional wall mounting clip included
- Powered by 3V lithium battery CR 2430

[Link to Situo 5 Users Guide](#)

Telis 16



- 16 Channel RTS hand held remote with on-screen display
- Close and open groups of windows with a single gesture
- Clear and functional design with an on-screen display
- Label each channel for added convenience
- Wall mounting clips is included
- Powered by 2 AAA alkaline batteries

Situo® 5 Variation



- 5 Channel RTS hand held remote with scroll wheel
- Unique design allows precise tilt control of blinds and shades
- Set a favorite position for an individual or a group of motorized applications for quick and easy access.
- Not available on Woven or Roller
- Powered by 3V lithium battery CR 2430

Telis 1 Chronis RTS Remote with Timer



- Combines the function of a remote with the convenience of a programmable timer
- Quick set feature
- One open and one closed schedule per day
- Weekday and weekend schedules
- Wall mount clip is included
- Powered by 2 AAA alkaline batteries

RTS Repeater



- Plugs into any 120V AC outlet
- Extends range up to 60 feet
- Should be placed halfway between control device and motor
- Repeater receives the signal from the remote and re-transmits it to the shade.
- Useful in exceptionally large areas or rooms
- Maximum of 2 per network

SOMFY® AUTOMATION

CONTROL OPTIONS

CONTROL OPTIONS:

Smoove® 1 and 4 Channel Surface Wall Switch



Silver

Black

- 1 or 4 channel, surfaced mounted RTS wall switch
- No need to cut in to wall, completely wireless design
- Lightly touch the Smoove surface to adjust position
- Easy access to programming button
- Set a favorite position for quick access for individual or a group control
- Simple design complements any decor
- Includes Pure frame
- Additional frame options include: Silver or Black (sold separately)

[Link to Smoove Overview Video](#)

Decoflex WireFree Wall Switch



- Single or 5 channel wireless RTS wall switches
- Completely wireless and installs quickly
- Control one motorized product, or a group of motorized products per channel.
- Powered by 3V lithium battery CR2450

Somfy myLink™ WiFi Hub and App



- Each Wifi hub supports 16 channels (single or grouped shades)
- One myLink per room with motorized product, range to motors is 30-35 feet
- Control Somfy RTS motorized systems while home or away using a smartphone or tablet
- Intuitive installation and setup allow users to the myLink™ experience in a short few minutes.
- On screen setup wizard helps users create timed events, scenes and more.
- Compatible with Amazon Alexa, & Google Assistant via IFTTT.
- Allows for easy integration with major third-party control systems.

[Link to the Somfy myLink Quick Guide](#)



[Click icon to download](#)



[Click icon to download](#)



*Click or Scan to
Find out more about
the Somfy myLink™ App*

SOMFY® AUTOMATION

ADDITIONAL ROLLER SHADE INFORMATION

WIREFREE 2 IN 1 CONTROL SIDES BY MOTOR

Somfy Motor	Curved Cassette		Skyline Fascia	
	Left Panel	Right Panel	Left Panel	Right Panel
Roll Up 28 WireFree RTS	Left	Right	Left	Right
Hardwired Sonesse® ULTRA 30 WireFree™ RTS	Left	Right	Left	Right

*Motor available only on outer shade side, left or right; specify upon ordering.
Gap between each section is 1/2"

HARDWIRE MOTORIZED COUPLED SHADES INFORMATION

The Motor Coupler Bracket is used on Sonesse 50 and Sonesse Ultra 50 RTS motors, it allows 2-3 separate shades to share a common middle bracket, with a single motor on either side to control both shades together.

COUPLED SHADE LIMITATIONS

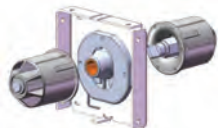
- Minimum width on motor side is 33" (Sonesse 50) and 39" (Sonesse ULTRA 50); non-motor side is 12"
- Maximum height for each coupled shade is 144"
- Motor available only on outer shade side, left or right– specify upon ordering
- Gap between each section is 7/8"
- Spring Rings have an adjustable height feature that helps leveling of side by side shades and eliminates telescoping

Configuration	2" tube	2.5" tube	3.25" tube	Max width	Max width per panel
Single Shade	YES	YES	YES	144" / 162" **	NA
Coupled Shade	YES	NO	NO	216"	120
Single-Fascia/Pocket	YES	YES	NO	144"	NA
Coupled-Fascia/Pocket	YES	NO	NO	216" ***	120

Open Roll
Intermediate Bracket



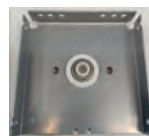
Fascia or Pocket
Intermediate Bracket



Open Roll Drop in
Coupled Bracket



Drop in
Fascia Pocket Bracket



2 IN 1 DIMENSIONS

Motor Bracket	Motor	Mid Gap	Idle End
Spring Ring	-13/16"	-7/8"	-7/8"
Drop in	-1 3/8"	-1/2"	-7/8"

3 IN 1 DIMENSIONS

Motor Bracket	Motor	Mid Gap	Mid Gap	Idle End
Spring Ring	-13/16"	-7/8"	-7/8"	-7/8"
Drop in	-1 3/8"	-1/2"	-1/2"	-7/8"

TOP TREATMENT CONTROL SIDES BY MOTOR

The chart below describes control positions available for each motor system and top treatment

Somfy Motor	No Top Treatment	Deluxe Valance	Fabric Cornice	Curved Cassette	Square Cassette	R-Series Fascia	Skyline Fascia	Pocket
Roll Up 28 WireFree RTS	Both	Both	Both	Both	Both	NA	Both	Both
Sonesse ULTRA 30 WireFree RTS	Both	Both	Both	Right	Right	NA	Right	Right
Hardwired Sonesse 30 RTS 24V	Both	Both	Both	Both	Both	NA	Both	Both
Hardwired Sonesse 50 RTS 120V AC	Both	NA	NA	NA	NA	Both	NA	Both
Hardwired Sonesse ULTRA 50 AC	Both	NA	NA	NA	NA	Both	NA	Both

* Tolerance: Height <= 60", +1/4"; Height <=120", +3/8"; Height > 120", +1/2"

** Varies by fabric, refer to product specs for detail.

*** Spliced Fascia/Pocket once width exceeds 190"

AUTOMATION *from Alta*

SOMFY® AUTOMATION

PRICING & SURCHARGES

The Automation cost factor is different from blinds/shades. If you need to access your cost factor, refer to page 4 in the General Information Guide.

RTS MOTOR SYSTEMS

Tilt Only 50 WireFree RTS Motor	\$200
Roll Up 28 WireFree RTS Motor	\$200
Sonesse ULTRA 30 WireFree RTS Motor	\$300
Sonesse 30 RTS 24V DC Motor	\$500
Sonesse 50 RTS 120V AC Motor	\$600
Sonesse ULTRA 50 120V AC Quiet Motor	\$800

CONTROL OPTIONS

Situo 1 Remote in Pure - 1 Channel (1019537)	\$60
Situo 5 Remote in Pure - 5 Channel (1019536)	\$84
Telis 16 Remote - 16 Channel (1811081)	\$300
Situo 5 Variation Remote in Pure - 5 Channel with Scroll Wheel (1021802)	\$140
Decoflex WireFree Wall Switch - 1 Channel, White (1810897)	\$100
Decoflex WireFree Wall Switch - 5 Channel, White (1810813)	\$100
Telis 1 Chronis Timer (1805237A)	\$330
Smooove 1 Surface Mounted Wall Switch - 1 Channel (Includes Pure frame) (1811533)	\$120
Smooove 4 Surface Mounted Wall Switch - 4 Channel (Includes Pure frame) (1019538)	\$120
Smooove Frame - Silver (9015025) or Black (9015023)	\$24

POWER ACCESSORIES

Rechargeable Li-ion Battery Pack (1019535)	\$100
WireFree Lithium-ion Charger (9025166)	\$30
8" WireFree Charger Extension Cable (9021131)	\$12
95" WireFree Charger Extension Cable (9021016)	\$12
WireFree Solar Kit (9019034)	\$200
Solar Kit Rapid Charger (9018620)	\$150
Ni-MH Rechargeable Batteries (10) for Solar Panel Kit (9018621)	\$60
Battery Pack Extension Cable - 10" (9018623), 48" (9016736)	\$12
Battery Pack Extension Cable - 96" (9018624)	\$18
Plug-in Transformer - 12V DC, 10 Ft Cord (1822445)	\$140
Plug-in Transformer - 24V DC (RC445117)	\$100
Power Cable - 120V with 18" Plug (1019539)	\$30
Power Cable - 120V with 36" Plug (9019952)	\$30
Power Cable - 120V with: 72" Plug (1019542) 120" Plug (1019543)	\$40
Power Cable - 120V with 288" Plug (1019541)	\$80
Power Cable - 120V with out Plug, 120" (9018190)	\$54

INTEGRATION & MISCELLANEOUS ACCESSORIES

RTS Repeater (1810791)	\$300
16 Channel Universal RTS Interface (1810872)	\$660
MyLink Interface (1811403)	\$300

HARDWIRED AUTOMATED COUPLED SHADES

2 Panels	add \$90
3 Panels	add \$180

The above pricing represents the motorization surcharge that needs to be added to the price of a single blind. Refer to the individual product reference guides for additional pricing and surcharge information.

SOMFY® AUTOMATION

QR CODE QUICK LINKS

CHECK OUT THESE MYLINK APP HOW TO AND PROGRAMMING VIDEOS

How to Videos / MyLink

To see all of the Somfy Automation myLink How to Videos on YouTube, click [here](#)

Open your Camera app and point it steadily for 2-3 seconds towards the QR Code you want to scan



Adding
Devices



Adding RTS
products to an
existing myLink



Connecting
with Alexa



Connecting to
Amazon Alexa
Routines



Connecting
service with
IFTTT



Control Scenes
and Schedules
with Amazon
Alexa



Create and
Execute
Scenes



Create and
Execute
Schedules



Create a
Routine in the
Alexa App using
myLink



Edit or Delete
a Routine in
the Alexa App



Initial Set up
and RTS
Programming



Joining an
Existing
System



myLink App
Navigation

Somfy How to Video Series

To see all of the Somfy Automation Programming How to Videos on YouTube, click [here](#)



Somfy How to
Video Series
on YouTube



SIMPLICITY

AUTOMATION

SIMPLICITY AUTOMATION

ENJOY THE EASE

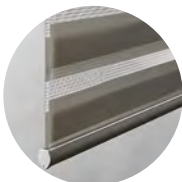


Our battery-operated Simplicity automation is an economical Radio Frequency system available across our most popular product categories. Shades operate by remote control and the batteries are rechargeable for extra cost savings and convenience.

FEATURES:

- Radio Frequency (RF) Technology
- Rechargeable lithium-ion battery systems offers reliable operation
- Simple and clear set up, no electrician is required
- Use with Smart Controller to operate shades via smartphone

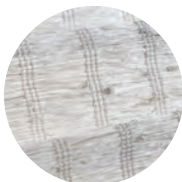
AVAILABLE ON:



Dual Shades



Honeycomb Shades



Natural Wovens



Roller Shades



Window Shadings

AT A GLANCE AVAILABILITY

MOTOR	POWER	Dual Shades	Honeycomb Shades	Natural Wovens	Roller Shades	Window Shadings
Simplicity	Battery Wand, Plug-in		✓			
Simplicity Rechargeable	Built-in Rechargeable Li-ion Battery, Solar Panel	✓	✓	✓	✓	✓

Rechargeable motors require the purchase of plug-in charger (at least one per order).

SIMPLICITY AUTOMATION

FREQUENTLY ASKED QUESTIONS

How strong is the remote?

The remote is effective up to 230 feet from the shade it is operating

How many shades can be operated with a single remote?

A single remote can operate up to 5 shades or groups of shades, plus an option to operate all shades simultaneously.

Can groups of shades be controlled with a single remote?

The multi-channel remote can be used to operate individual or groups of shades. Each button can be programmed on the remote to correspond to a single shade or select group of shades to be operated simultaneously.

Can shades be programmed to open at a particular height?

Simplicity motors have a “Favorites” position setting. To set a “Favorites” position, follow instructions provided in the installation instructions.

When it is time to charge or replace the batteries?

When the battery life is fading, the shade will begin to move at half speed – this is an indication to charge the battery.

Will Wi-Fi interfere with the shade operation?

It is possible other Wi-Fi devices such as wireless doorbells, baby monitors or wireless weather stations utilizing the same frequency could interfere with shade operation.

Will two identical shades next to each other operate at the same speed?

Because each motor functions independently, it is possible that identical shades will operate at different speeds. Shade speed is reliant on several factors such as battery life and charge strength, the battery type and the friction within the shade

Will the shade be damaged if operated manually?

It is not recommended to operate the shade manually. To avoid possible damage, please contact customer service for any shade that is not functioning properly.

How long does it take to fully charge the lithium ion –battery?

Recharging time is approximately 5 hours for fully depleted batteries. The battery can be recharged up to 500 times.

Will the Solar Panel recharge my battery?

The Solar Panel provides a constant trickle charge to the rechargeable battery. It does not require direct sunlight, but performs best in regular direct sunlight applications. It will prolong the life of the charge and in some applications will maintain charge indefinitely. The life of the charge is subject to application variables such as, size and weight of shade, frequency of use, amount of direct sunlight exposure, etc.

SIMPLICITY AUTOMATION

MOTOR & CONTROL OPTIONS

MOTOR OPTIONS:

Simplicity

- Standard Honeycomb Shade motor powered by batteries or Plug-In power cord
- Minimum Width: 18" net / Max Width: 96" End Mount: 36" net

Power Supply: Battery Wand, Plug-in

[Link to the Simplicity Programming Guides](#)

Simplicity Rechargeable

- Standard motor on Roller Shades, Dual Shades, Window Shadings and Natural Wovens
- Motor features built in rechargeable Lithium-ion battery that is fully concealed by the inner tube
- External rechargeable battery pack on Honeycomb Shades
- Also available on Honeycomb Skylight and Top-Down/Bottom-Up Shades
- Min Width Honeycomb Bottom-Up: 18" net / TD-BU: 24" net / 2-on-1: 20" net per panel / Max Width: 96*
- Min Width Dual / Roller Shades: 19" net / Max Width: varies by fabric
- Min Width Window Shadings: 21" net / Max Width: 96"*
- Min Width Natural Wovens: 24" net / Max Width: 96"*

Power Supply: Battery charger, Solar Charging Pack

[Link to the Simplicity Programming Guides](#)

*The minimum and maximum sizes listed are for the given motor system and may vary depending on the product, fabric and features selected. See individual product Retail Price List for details.

CONTROL OPTIONS:

Simplicity Remote Control



- 5 Channel or 14 Channel Remote Control
- Individual or group control with the option of a favorites position
- Operating range is 80 feet
- 5 Channel is available in black or white
- 14 Channel is available in white only
- Includes a wall mount bracket for easy storage
- Dimensions: 5" L x 2.05" W x .63"D

[How to Link and Unlink Shades to a Remote Video](#)

Simplicity NEO Smart Controller and App



- User-friendly setup process using Wi-Fi
- Control your blinds in groups or individually from anywhere
- In very large homes, simply install multiple Smart Controllers
- Set schedules on a specific time, sunset or sunrise times
- Works with Amazon Alexa, Google Assistant and Siri Shortcuts
- Dimensions: 2.95" L x 2.55" W x 1.269" D

SIMPLICITY AUTOMATION

POWER OPTIONS

POWER OPTIONS:

Simplicity Charger



- Simplicity Rechargeable motors requires one 8.4V charger per order
- Approximate recharge time is 5 hours
- Battery can be recharged up to 500 times
- Charging cord is 156" long

Solar Charging Panel



- Rechargeable Li-ion battery, recharges in approximately 5 hours
- Provides constant trickle to the battery
- Can be mounted on the glass or installed on the window casing
- Dimensions: 18 1/2" L x 1-1/2" W

Plug in Power Transformer

Honeycomb Shades



- Optional power source on standard Simplicity motors
- Comes with a 80" cord, a 48" extension is available
- Plugs into a standard outlet to power the motor of a single shade

Battery Wand

Honeycomb Shades



- Power source on standard Simplicity motors
- The Battery Wand can be clipped to the head rail, wall or ceiling
- Battery wand measures 17" and comes with 8 AA alkaline batteries

SIMPLICITY AUTOMATION

PRICING & SURCHARGES

RETAIL SURCHARGES

The Automation cost factor is different from blinds/shades. If you need to access your cost factor, refer to page 4 in the General Information Guide.

MOTOR SYSTEMS

Honeycomb Shades

Simplicity, Battery or Plug-in power \$240

Simplicity Rechargeable Automation \$240

Simplicity Rechargeable Automation Top-Down/Bottom-up \$300

For Simplicity Skylight, please add price of selected motor to the retail price of shade including all necessary options and surcharges.

Dual Shades | Natural Wovens | Roller Shades | Window Shadings \$240

Simplicity Rechargeable Automation

POWER OPTIONS

Simplicity Plug in Charger (CH-8.4V-1AN) \$24

Simplicity 12V DC Plug-in Transformer (CS5151) \$30

Simplicity Solar Charging Panel (1014614) \$120

CONTROL OPTIONS & ACCESSORIES

Simplicity 5 Channel Remote Control, Black (CS5138) or White (CS5138W) \$36

Simplicity 14 Channel Remote Control for Top Down Bottom up (CS52137) \$48

Simplicity Battery Wand Extension Wire, 48" (CS5133Z) \$6

Simplicity NEO Smart Controller (CS5196) \$280

The above pricing represents the motorization surcharge that needs to be added to the price of a single blind. Refer to the individual product reference guides for additional pricing and surcharge information.

SIMPLICITY AUTOMATION

QR CODE QUICK LINKS

CHECK OUT OUR SIMPLICITY HOW TO VIDEOS

How to Videos

To see all of the Simplicity Automation Programming How to Videos on YouTube, click [here](#)

Open your Camera app and point it steadily for 2-3 seconds towards the QR Code you want to scan



How to set and
adjust shade
limits



Recharging
the Battery



Setting a
Favorites
position



TDBU - How to
Operate

How to Videos / Remote Control



Cloning and
deleting
settings



Fixing a
jammed confirm
or limit button



Link and Unlink
to the Remote
Control



TDBU - Link and
Unlink to the
Remote Control



POWERWAND

AUTOMATION

AUTOMATION *from Alta*

POWERWAND™

EASY ACCESS LIGHT CONTROL

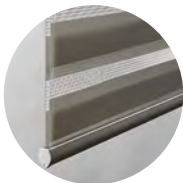


Our wirefree, rechargeable PowerWand motor offers affordable motorization to anyone needing the cord free ease and functionality of automated shades.

FEATURES:

- Keep it simple with minimal programming for worry free operation
- Enjoy simple touch and walk away push button control, even set a favorites position
- The rechargeable lithium-ion battery powered wand conveniently eliminates the need for batteries
- Keep pets and children safe with cord free and sleek wand, available in white or black

AVAILABLE ON:



Dual Shades



Honeycomb Shades



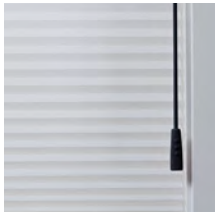
Roller Shades



Window Shadings

OPTIONS:

- Wand colors: White or Black (specify upon ordering)
- Wand lengths: 1 ft (12"), 2 ft (24"), 3 ft (36"), 4 ft (48"), 5 ft (60")
- Can be ordered for right or left side placement
- One plug-in charger is required for each order (specify upon ordering)
- The 8.4V plug-in charger is 13 feet long



POWERWAND RETAIL SURCHARGE:

The Automation cost factor is different from blinds/shades. If you need to access your cost factor, refer to page 4 in the General Information Guide.

- | | |
|---------------------------------|------|
| • PowerWand | \$90 |
| • Plug-in Charger (CH-8.4V-1AN) | \$24 |

The above pricing represents the motorization surcharge that needs to be added to the price of a single blind. Refer to the individual product reference guides for additional pricing and surcharge information.

POWERWAND™

FREQUENTLY ASKED QUESTIONS

How do PowerWand shades operate?

Press the up or down button on the pendant to raise or lower the shading to your desired position. No programming is required with PowerWand™ as upper and lower limits are set at the factory. If desired, upper and lower limits can be adjusted in the field.

Please refer to the installation instructions for instructions on resetting the upper and lower limits and setting a favorites position can be programmed on-site.

What does the PowerWand look like?

The PowerWand™ Rechargeable wand and pendant is attached to the head rail and requires no additional mounting. The wand and pendant hangs down the front of the shades from the head rail, the pendant portion is 2-1/2" long.

Are Additional PowerWand Options Available?

Wand is available in Black or White (there is no default)
Wand is available in 12" increments up to 60" (1 ft. – 6 ft.)
Wand is available on either the right or left side of the shade

How long will the charge on the battery last?

The battery life will vary based on the type of window covering selected, the size and weight of the window covering and the number of times you operate the blind on a daily basis.

What type of charger is used?

The 8.4 Volt charger requires a standard power outlet to recharge the battery. The charger must be specified when ordering the PowerWand motorization option. The charger plugs into the charger port on the side of the pendant. The charger is black and comes with a 156" wire. The dimensions are 1" wide x 2-1/2" length x 1-3/4" deep.

What are the minimums and maximum sizes allowed?

- Min Width Dual Shades: 21" net / Max Width: varies by fabric
- Min Width Honeycomb: 18" net / Max Width: 96"
- Min Width Roller Shades: 19" net / Max Width: varies by fabric
- Min Width Window Shadings: 21" net / Max Width: varies by fabric

POWERWAND™

QR CODE QUICK LINKS

CHECK OUT OUR POWERWAND HOW TO VIDEOS

How to Videos

To see all of the PowerWand Automation Programming How to Videos on YouTube, click [here](#)

Open your Camera app and point it steadily for 2-3 seconds towards the QR Code you want to scan



Attaching the
Wand
Roller Shades



Attaching the
Wand
Honeycomb



Recharging
the
PowerWand



Reattaching a
Roller Shade
Pendant



Reversing
Polarity



Resetting the
Motor and
Limits



Additional
PowerWand
Videos on YouTube

LIMITED LIFETIME WARRANTY

CONGRATULATIONS ON YOUR SELECTION OF AN ALTA WINDOW FASHIONS WINDOW COVERING.

Because we take pride in our workmanship and quality that goes into every one of our products, we back our products with this:

LIMITED LIFETIME WARRANTY COVERING OUR CUSTOM MADE WINDOW COVERINGS

We extend this limited lifetime warranty to the original purchaser. This warranty applies only to manually operated Custom Products properly installed in the window, door or interior area for which they were intended. Motors on products with automation are warranted for five years from the date of purchase.

Installation of the product must be in accordance with the accompanying instructions. The product cannot be modified. It is the purchaser's responsibility to maintain and clean the product in compliance with the instructions provided. The product must be used only in the window for which it was purchased.

This warranty covers our products for defects in materials, mechanisms, workmanship, or failure to operate properly. Operational cords are warranted for 5 years from the date of purchase.

Any conditions caused by damage to the product resulting from misuse, abuse, direct exposure to salty air or discoloration due to sunlight or the passage of time are NOT covered by this warranty.

THIS WARRANTY DOES NOT APPLY TO CONDITIONS CAUSED BY NORMAL WEAR AND TEAR UPON THIS PRODUCT.

This Warranty Is Exclusive And In Lieu Of All Other Obligations, Liabilities Or Warranties. In no event shall Custom Brands Group be liable for INCIDENTAL or CONSEQUENTIAL DAMAGES or any other direct or indirect damage, loss, cost, expense or fee. Some states do not allow the exclusion or limitation of incidental or consequential damages, so this exclusion or limitation may not apply to you.

In the event of a defect under this warranty, Custom Brands Group will repair or replace the product, at our option, provided it is returned to an authorized dealer.

Our warranty excludes shipping charges and labor costs for removal, measuring and installation. Repairs will be made with like or similar parts.

This warranty gives you specific legal rights, and you may also have other rights, which may vary from state to state.

Notes: Specialty Shades are warranted for one year from the date of purchase.

If You Require Further Assistance,
Contact Custom Brands Group:
111 N. Apollo Road
Salt Lake City, UT 84116 (800) 669-6333

ALTA
WINDOW FASHIONS