



# **MIA RECOVERY NETWORK**

Non-profit 501-c-3 incorporated in the State of Texas

# WWII MIA DATABASE

- **Archival Forensic Study**
  - Cross check grave numbers, interment card records, WOM
- **Design of Database**
  - MS Access based
  - Search capacity in text and structure
  - Sort-Query
  - Provide reports
- **Record Review and Extraction**
  - Thirty fields per record possible
  - Field searchable (all Armor fields, Navy, Aviation)
  - Character text searchable( lines of specific text within any field)
- **Populate database**
  - All unrecovered MIA X-files added to data structure

# SOME X-FILE CONTENTS

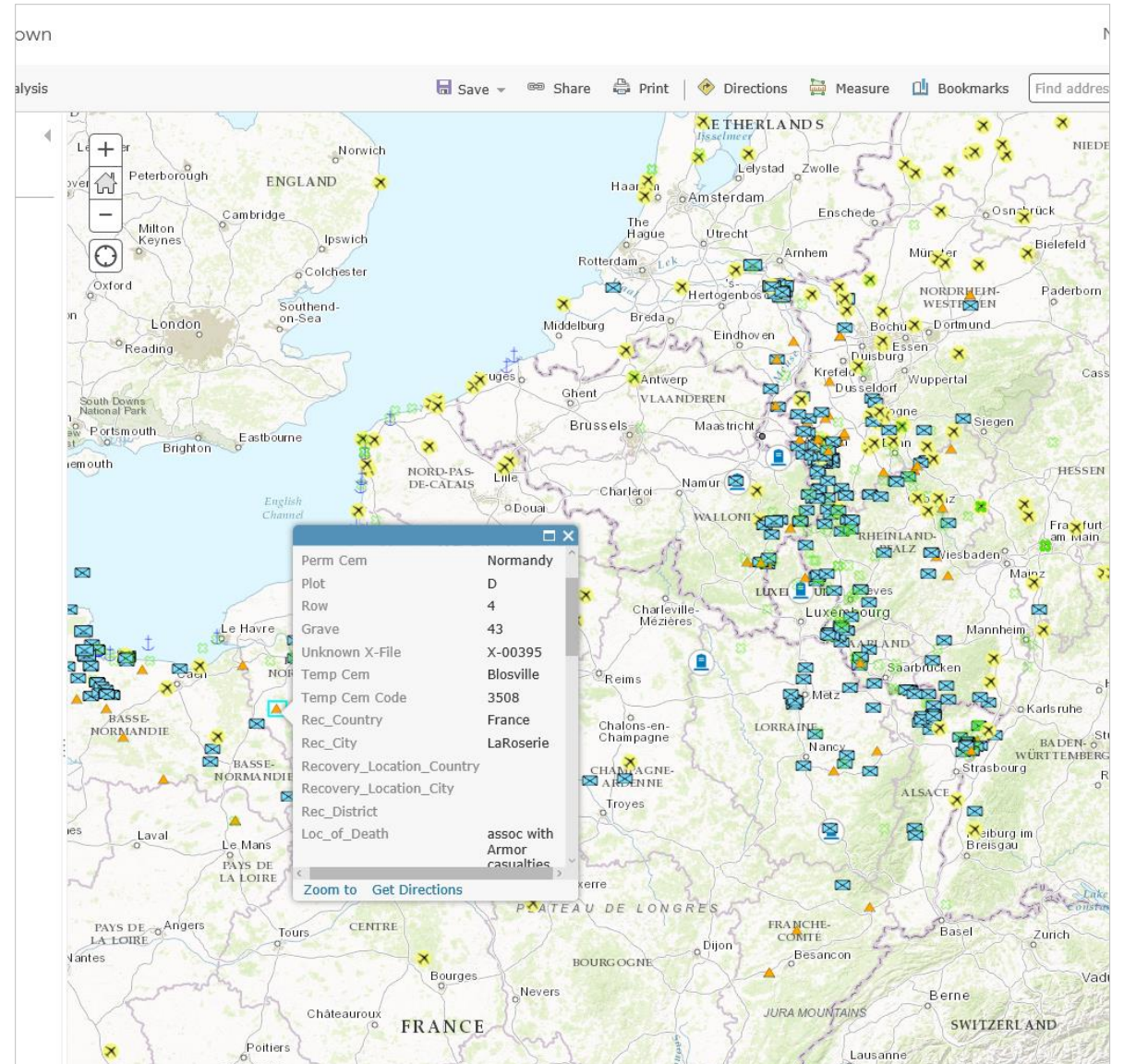
- Service branch if known
- Condition of remains
- Personal effects found
- Anthropology report
- Dental remains present, dental restoration present
- Estimated height
- Place of death
- Healed fractures
- Tattoos

# GEOSPATIAL

- ESRI's ArcGIS software package
  - Convert MGRS coordinates in QM GR records to Latitude/Longitude
  - Populate MS Access fields with Lat/Long in decimal degrees
  - Write process protocol to update MS Access data and transfer to GIS
  - GIS now capable of displaying point data referring to remains recovered
  - Unit movements/dates to be displayed as layers on map
  - Several basemaps available to indicate terrain contours, present vegetation, etc.

# HIGH LEVEL VIEW OF WWII PLOTTED DATA

The pop-up inset displays the individual data when a marker is clicked



# DETAILED VIEW OF A POP-UP WITH DATA ON RECOVERED REMAINS

Extracted data from X-file for this remains is presented in this fashion. Each point in the map has such a dataset.

## UNKNOWN Casualty X-File DATA ENTRY FORM

PermCem	<b>Sicily-Rome</b>	Service Branch	<b>Air Force</b>	Recovery_Lo	<b>rf972326</b>
Plot	<b>F</b>	Assoc_SerNum		X_Coord_Longitude	<b>13</b>
Row	<b>13</b>	Assoc_AC_S_N		Y_Coord_Latitude	<b>42</b>
Grave	<b>33</b>	Assoc_MACR		Coord_Source	<b>X-file</b>
Unknown_X_	<b>X-00830</b>	Toothchart_Y_or_N	<b>No</b>	At_Sea_Loss_Y_or_N	<b>No</b>
TempCem	<b>Nettuno Cemetery, N</b>	Est_Height	<b>UTD</b>	Alternate_Coords	
TempCemCo	<b>5260</b>	Units_in_Recov		BOS_Symbol	
Rec_Country	<b>Italy</b>	Temp_Cem_Plot_Row_Grave	<b>2V-80-6719</b>		
Rec_City	<b>Cisterna</b>	Loc_of_Death	<b>vic 3.5 mi WNW of Cisterna</b>	Burial_Details	<b>CIP 237-C</b>
Rec_District	<b>Latina</b>	DOD_Date_Est_Earliest	<b>03/20/1944</b>		
		DOD_Est_Latest	<b>05/30/1944</b>	Descr_of_Re	<b>fragments of upper body only, .45 cal #876008, .50 Cal MG #274948, and #20551</b>
		DOD_Notes			
		Link_to_Info			

## SURVEYED AND PLOTTED LOCATIONS-

22<sup>ND</sup> U.S. INFANTRY AND GERMAN TROOPS DURING THE ADVANCE ON GROSSHAU, SEPT-DEC 1944

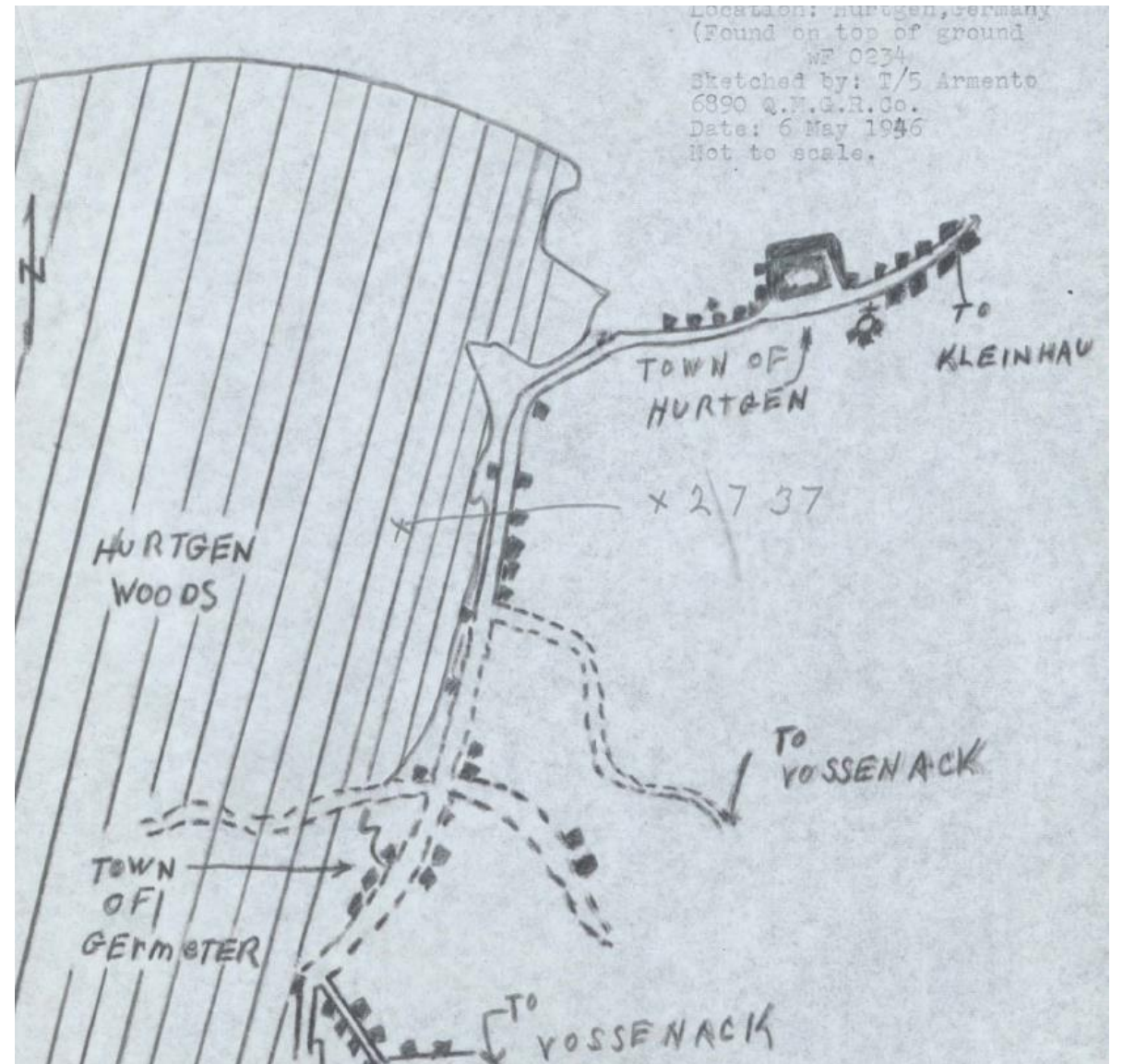
## SURVEYED OCTOBER-2016

Data used was AAR's, foxhole locations, physical artifacts in positions. Greater detail available when presentation is dynamic. Includes battalion designations, specific dates, etc



# QM GR SKETCH FOR UNKNOWN X-2737

Sketches can be plotted as an overlay into the GIS referenced format or used as seen here to support extended searches for other unknowns in the same area while using most recent satellite photography.





# BASEMAP OPTIONS IN ESRI-ARCGIS

USER MAY SELECT ANY OPTION  
MOST USEFUL FOR INVESTIGATION  
AND MISSION

- TOPOGRAPHIC
- IMAGERY
- IMAGERY WITH LABELS
- STREETS
- OPEN STREETS
- LIGHT GRAY CANVAS
- DARK GRAY CANVAS
- TERRAIN WITH LABELS
- OCEANS
- NATIONAL GEOGRAPHIC