



ADVANCED NETWORK DEVICES

Corporate Profile

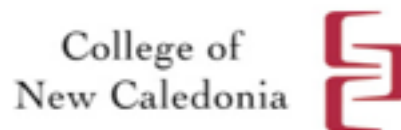
102 Ravine Edge Drive, Richmond Hill, Ontario
L4E 4J6 Canada Tel: +1-905-236-4732
E-Mail: info@and.ca
www.and.ca

VALUED CUSTOMERS

Short List of A-N-D Valued Customers



SCHAEFFLER GRUPPE



Company Overview

With more than twenty four years of know how, Advanced Network Devices team members have supplied clients both locally and internationally with more than parts and pieces. We are a business partner and a trusted provider of comprehensive Information Technology product lines and infrastructure solutions, backed by a solid guarantee, fast and friendly service, and incredible sourcing capabilities.

At Advanced Network devices, we understand your IT network is the backbone of your business, which is why we offer innovative and mission-critical solutions that offer you better availability, improved efficiency, while offering flexibility and scalability, to meet the specific needs of your business for today and tomorrow.

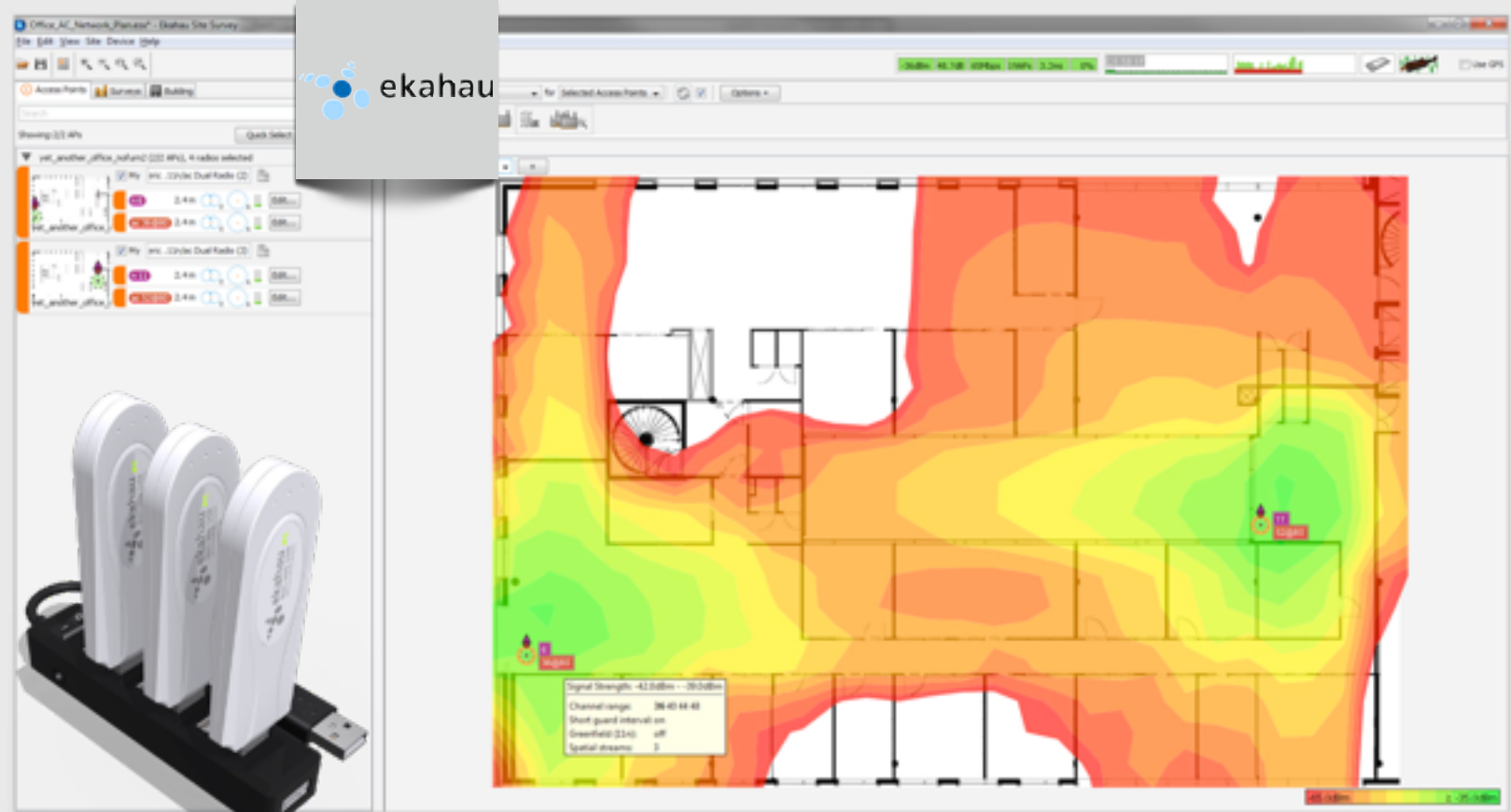
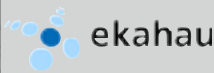
Advanced Network Devices is provider of robust, yet cost effective structured cabling and wireless test and measurement, and Copper and Fibre test and measurement solutions which will meet, and exceed your current as well as future requirements.

Advanced Network Devices engineering team, can design robust, state of the art, yet cost effective solutions, from physical layer to switching and routing layer for enterprise, medium and small businesses across North America.

Because of the pivotal role we could play in your business, Advanced Network Devices is committed in creating and maintaining strong relationships with our customers, built on a foundation of excellence and trust. From the products we offer to our dedicated customer service and support, we know what's important to you.

Sincerely yours,
A-N-D Team





WIRELESS SOLUTION

Ekahau, making a wireless dream a reality

Ekahau is a world class leader in innovative wireless solutions, may it be asset tracking, security or site survey, and analysis solutions. With over 15,000 happy customers and 500,000 users. Ekahau products are used by well known entities such as Cisco, Meru, Aerohive, in addition to thousands of systems integrators, IT administrators, and the rest of the WiFi world,.

Ekahau has become the pioneer in WiFi tools by designing, developing and manufacturing the first ever enterprise-grade site survey tool with built-in Network planning, reporting, and other critical features which is required for day to day operations of IT Administrators and IT Security officers.

WIRELESS SITE SURVEY & PLANNING

In the world of WiFi networks, careful planning is essential to ensure that your wireless network performs in a manner that is consistent and in accordance with your application requirements. Therefore it is very important to conduct a thorough planning as well as site survey before and after any Wireless network deployment.

A pre-site survey allows the systems designers to assess requirements and design the network in manner that promotes and encourages scalability while also meeting expectations with regard to the applications the network will support.

When executives and IT managers think about obtaining such solutions, they often consider obtaining equipment that will provide a good return on their investment. With that in mind, a wireless network that is going to be deployed throughout the enterprise should be designed and deployed for data, video, and voice, to ensure that WiFi network is scalable, and the user mobility is enhanced.



Design, Survey & verify WiFi effectively

Over 10 years in the making, Ekahau Site Survey (ESS™) maintains its reputation as the easiest to use, enterprise-grade Wi-Fi design and maintenance tool for WiFi professionals. With crystal clear heat maps and easy-to-use reports, ESS makes it simple to optimize WiFi.

ESS will let you plan and create WiFi networks according to your performance and capacity requirements by taking into consideration the ever increasing amount of wireless clients (BYOD) and simulating real-life application usage such as VoIP, HD video streaming and web browsing. Some of ESS features can be highlighted in the below:

- 3D Wi-Fi Network Planning
- Plan for capacity, coverage, and performance
- Hybrid Site Surveys
- Network Analysis, Optimization and Simulation
- In-depth analysis on network coverage, performance and capacity - with unbeatable clarity
- WiFi Troubleshooting
- WiFi bottlenecks with a single view
- Standard and customized Reporting
- RTLS Deployment
- Deploy, calibrate and test RTLS
- 802.11ac Network Planning, Capacity Analysis, and Site Survey
- Optimize 802.11ac and 802.11n Wi-Fi Network
- WiFi Interference Analysis
- BYOD Capacity Planning and Analysis
- Design a network that meets your capacity requirements
- Extensive after sales support services

Advanced Network Devices is proud to be National Value Added Distributor for Ekahau WiFi Design Solutions in Canada.

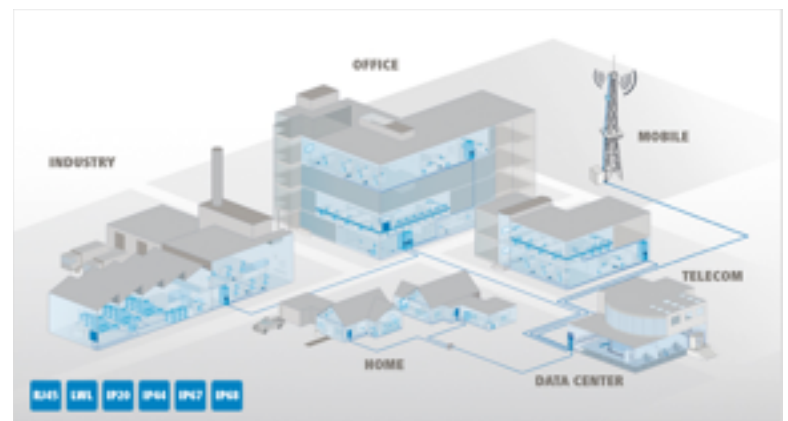


STRUCTURED CABLING

Telegärtner, a Unique approach to Structured Cabling

With over 60 years of experience Telegärtner GmbH, with its head quarters in Germany, is an internationally operated provider of comprehensive range of high performance structured cabling solutions for connection technology. The product line includes coaxial connectors, network solutions for structured building wiring as well as modular programs in the industrial and fibre optic areas. Telegärtner is not a conventional connector or network component. It is fully developed, high performance transmission solution that meets the highest demands of reliability and scalability.

Telegärtner (DataVoice) offers a reliable, professional, complete system for all aspects of building networking, providing complete wiring of copper and fibre optic networks and also professional connectors for industrial ethernet and harsh environment applications. It starts around the building with a complete line of fibre optic products which can be preassembled for easy installation, and carries over into the office area with comprehensive network solutions, and continues on into the industrial area with extremely reliable RJ45 connector systems for harsh environments.



Telegärtner (Coaxial) offers a broad standard range of coaxial connectors for rapid availability and with the added performance guaranteed by Telegärtner quality and reliability in every product, whether in the form of low failure rates, large performance reserves, or performance which goes well beyond standard requirements.



DATA VOICE OFFICE SOLUTIONS

The demand for flexible, innovative solutions alongside deep understanding and extensive expertise of structured cabling, has lead Telegärtner to become forefront leader in designing innovative solutions which are appreciated by endusers globally. For decades, Telegärtner has delivered this excellence to its customers-all over the world, and across every major industry.

While each application is unique, enterprise customers share common expectations: best performance, highest reliability, greater simplicity, and a migration path they can take confidence in. Telegärtner builds these priorities into individual solutions it designs, offering critical advantages to help you succeed.

Data centres benefit from the high speed, dependable performance and growing intelligence of Telegärtner infrastructure and software-based solutions. The solutions encompass, copper, and Fibre end to end solutions, which could be outfitted with intelligence on the physical layer, thus improving uptime and network availability.

Office Buildings utilize state of art connectivity solutions from MDF to the desk. The solutions encompass full range of copper and fibre solutions, which provide flexibility for adds, moves and changes to the infrastructure.

Campus environments solutions extended from indoor and outdoor connectivity, and allow expansion of the network, from LAN, to Campus, MAN, and eventually WAN, with highest network availability and performance across the enterprise. The solutions are designed and delivered in such a way that environmental considerations such as excessive temperatures, high humidity, and liquid/solid particle factors have minimal effect on performance and network availability.

Advanced Network Devices is proud to represent Telegärtner's entire Data Voice, Office, Data Centre, Industrial Ethernet and Harsh Environment solutions within Canada as National Distributor.



STRUCTURED CABLING

Infilink Technologies, where performance meets cost

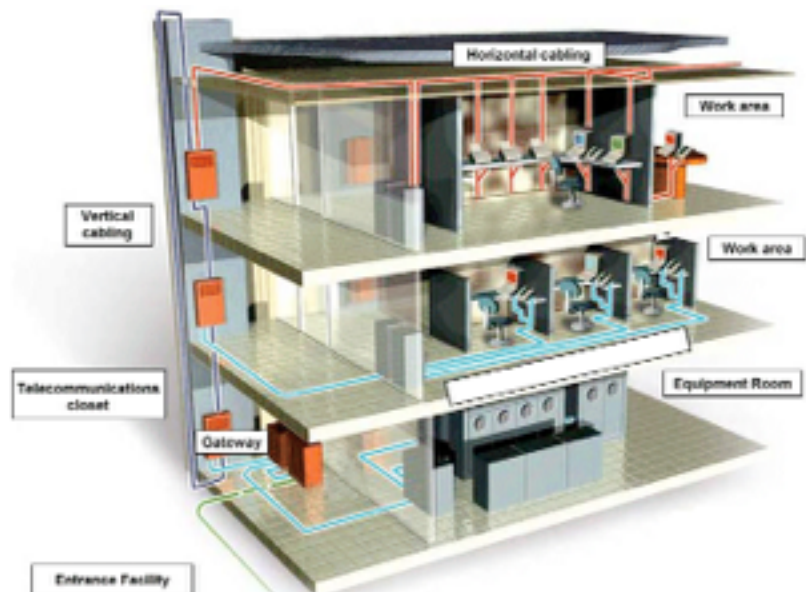
Infilink Technologies is a high performance, yet cost effective developer, manufacturer and supplier of copper and fibre Structured Cabling solutions for today's data-driven IT industry.

The Infilink Technologies product range encompasses end to end Category 5e and 6 unshielded and shielded cabling, optical fibre and other containment and interconnect solutions. Infilink Technologies is renowned for lower cost without compromise on quality.

Information Systems Managers need to reliably and economically connect switches and routers to servers and storage devices. Local Area Networks and Storage Area Networks require high bandwidth to transport data, video and voice packets in huge quantities. Latency, packet loss and of course cost, need to be minimized while reliability and up-time maximized.

The advanced network cabling products from Infilink Technologies address these challenges and guarantee reliable performance demanded by today's network.

Further, with the 25 year installation certification from Infilink Certified Installer (ICI), customers also are confident and assured of their network infrastructure quality and performance. With strong teamwork and dedicated management, everyone in Infilink Technologies is committed to maintain the highest standards in every aspect of the company's operation. In its mission to create best price/performance connectivity, superior quality and reliability, Infilink Technologies never stops pursuing optimal solutions for its customers, and continues to develop and introduce trouble-free and economically justified products to the marketplace.





Copper Solutions

Infilink Technologies Copper Solutions encompass end to end components that are compliant to CAT-5e, CAT-6 in shielded and un-shielded (Screened) variations. All components are designed to provide electrical performance in accordance with ISO/IEC 11801, EN 50173 series and ANSI/TIA-568 series for channel and permanent link configuration standards. Variations such as shutter, keystone mounting format and tool-less termination, Jacks for Category 5e and 6 address reliable, yet flexible and diverse installation requirements. All eight copper conductors are effortlessly terminated in one simple operation resulting in reliable interconnection in record time. The jacks can be reused several times due to incorrect wiring configurations.



Fibre Solutions

With the vision of supporting both edge and core of the network, Infilink Technologies offers a large selection of fibre optic patch cords, adapter panels, connectors, couplers, and cables in Single mode, OM2, and OM3 variations, to fulfill various bandwidth and applications requirements. The entire fibre optic products comply with ANSI/TIA-568-C.3 standards and specifications.

In order to further support customer requirements Infilink Technologies offer a wide range of MTP/MPO products including single mode or multimode MPO and MTP fibre patch cords, trunk cables, and MPO/MTP Cassettes. The MPO fibre connector technology offers up to 12 times the density of standard connectors, leading to significant reduction of space and cost, whilst providing bandwidth of up to 40/100 Mbps.

Advanced Network Devices represent Infilink Technologies entire solutions within American continent.

The Softing logo is located in the top left corner of the page. It consists of the word "softing" in a lowercase, sans-serif font, with a stylized circular graphic element to its right. The background of the top half of the page is a photograph of a server room with blue cables and two handheld testing devices in the foreground.

CABLE TESTING

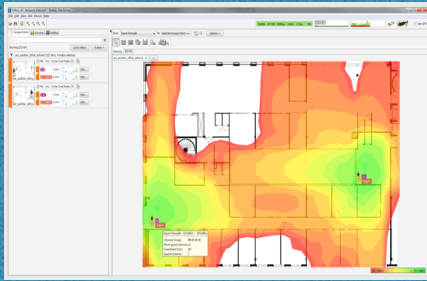
Softing, Most advanced cable tester up to 2500 MHz

The Softing's WireXpert, with its unparalleled 2,500 MHz measurement range, is the first cable certifier with capability to certify the highest performance cabling systems in enterprise networks and data centres. Cable installers make significant gain in productivity with WireXpert's industry leading test speed and ease of use. With certification testing up to Class FA and CAT8 copper cabling, as well as MPO, Single Mode and Multimode fibre optic cabling, WireXpert is ready for testing and certifying 40G and beyond.

Cabling systems are evolving rapidly with CAT8 standard for copper cabling on the horizon, and growing use of MPO and Single Mode cabling for 40G Ethernet and beyond. The powerful measurement engine of the WireXpert 4500 performs the most complex cable certification tests quickly and accurately. In a matter of seconds you will know the answer to "PASS or not?" For any failed links advanced diagnostic feature takes the guess work out, and will provided distance to fault, which further reduce trouble shooting time of links not meeting standard specified requirements.



The WireXpert 4500 has a large number of application specific detachable test adapters to test many different types of cables and components. The WireXpert 4500 has test adapters for all categories of copper patch-cords, multi-mode MPO cables, simplex multi-mode and single-mode links, industrial Ethernet cabling systems (1G and 10G), coaxial cables, and more. WireXpert 4500 even offers a range of specialized adapters for lab testing. Some of the most reputed cable vendors use the WireXpert 4500 in their research laboratories to qualify newly developed cabling components.



Copper Certification

Softing, WireXpert 4500 is the fastest tester enabling it test copper links in less than 9 seconds for Category 6A testing based on TIA or ISO certification standards. WireXpert is industries leading and only cable tester which can test up to 2500 MHz frequency range to support new TIA CAT 8 and ISO Class I and II draft standards . The higher frequency testing ability makes WireXpert 4500 a future proof investment. The unique feature of distance to fault will pinpoint failed location distance through advanced time domain analysis. Robust enclosure of WireXpert 4500 is designed to withstand rough handling, with more than 8 hours operation from Li-Ion battery. The WireXpert performance measurement accuracy is independently verified by ETL laboratories - and exceeds ISO Level V* (draft), IV and TIA Level IIIe Accuracy requirements.



MPO Fibre Certification

WireXpert cable certification tester WX4500-FA with built in encircled flux compliant light source enables testing of MPO/MTP links when used with MPO adapters. A typical test setup consists of WireXpert local unit with MPO power meter adapter, and the remote unit with MPO light source adapter attached. Alternatively, a multimode fibre adapter can be attached to WireXpert local unit for testing individual fibres in MPO link.

This solution provides a fast and accurate measurement of MPO link loss and testing against user configured limit, and automatically identifies MPO polarity methods A, B, C and non-standard MM parallel optic links.

This versatile solution enables data centre IT managers to get quick and accurate assessment of the quality of MPO links. Additionally, it helps in performing inspection of MPO components such as cassettes. The key feature of this solution is a 5-second Autotest that includes a detection of fibre connection map and measurement of loss on each channel.

Advanced Network Devices represent Softing field testing and certification solutions within Canada.



NETWORK MONITORING

NetCrunch, best of the breed in Network Monitoring

The NetCrunch by AdremSoft is a unique Integrated Network Monitoring solution which will provide detailed information about all devices, servers, switches, routers, services and connectivity in real time.

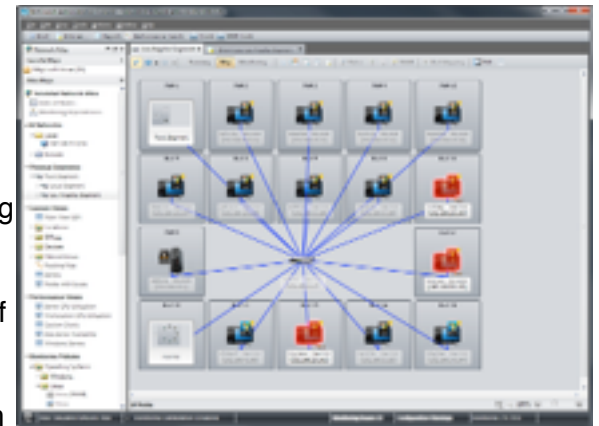
NetCrunch scalable design allows expandability of monitoring from LAN, to MAN, and eventually WAN.

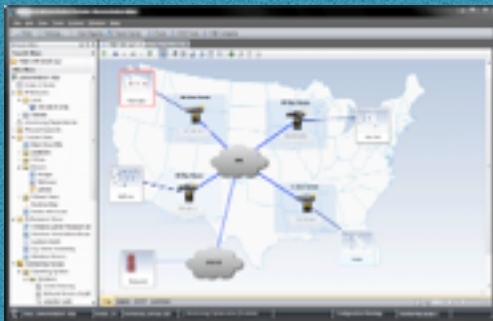
NetCrunch automatically creates Layer 2 maps, routing maps and automatically manages and updates many predefined views. NetCrunch unique design approach allows monitoring of network in depend of platform (Windows, Linux, OSX) under the same monitoring umbrella. Furthermore, due lack of distributed agents, network loads for monitoring purposes are negligible. Whether network maps, multiple performance data charts or top charts are possible through of creation of rules within NetCrunch.

NetCrunch can remotely gather, filter and analyze event log data from multiple Windows machines. By defining alert filters for specific events, logs could be created. By grouping same events if generated in within several seconds - alert floods are completely eliminated.

In order to compliment existing network management solutions, NetCrunch is able receive SNMPv1, SNMPv2 and SNMPv3 traps, as well as forward received traps to another SNMP manager.

NetCrunch uses a remote connection to the Windows system to monitor the performance (no SNMP required). By retrieving performance counters available in Windows, NetCrunch can track and alert on issues affecting operating system's performance and other applications supporting Windows counters (SQL, Exchange and many others).





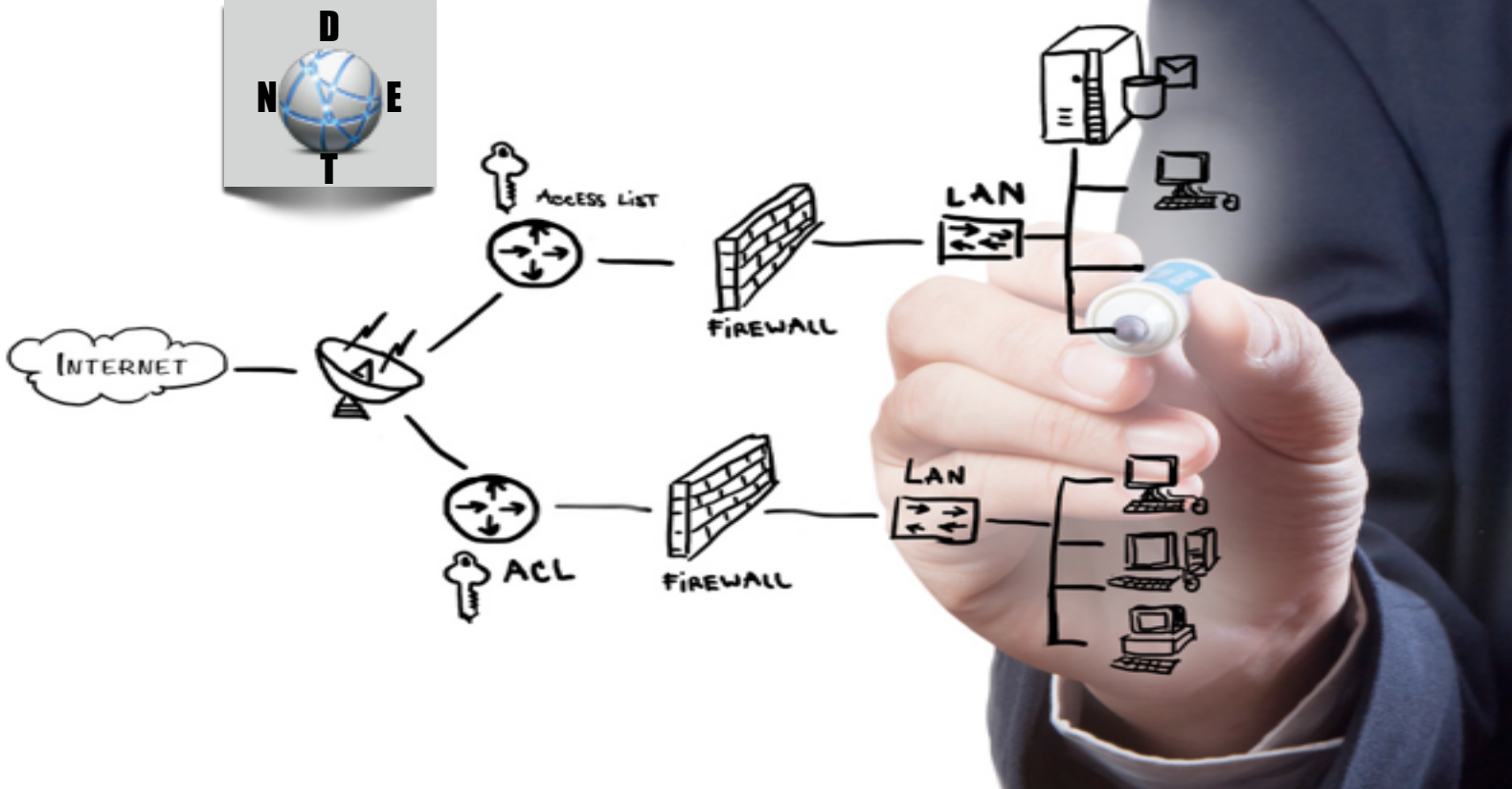
Analyze, Monitor, the Enterprise

Over 16 years in the making, NetCrunch by Adremsoft maintains its leadership as the most intuitive, comprehensive, yet scalable network monitoring solution in the market today. With over 2500 customers across the globe, it has become one of the forefront award winning leaders in the field of Network Monitoring.

A short review of NetCrunch is summarized as per below:

- Advanced File & Folder Monitoring Sensor
- Built-in MIB database contains about 300,000 SNMP objects
- Over 100 Monitoring Packs containing monitoring settings for popular applications and devices.
- Apache, DNS & Page Monitoring Sensors
- High Precision Performance Monitoring through floating point numbers in performance data.
- Decode encrypted SNMP v3 traps (TRAP and INFORM packets)
- Automatic Alert Resolution
- NetCrunch Server Status Dashboard
- External alert correlation (syslog, SNMP traps, Windows Events)
- Node Monitoring Configuration
- Users definable thresholds on average values
- Baseline and Range triggers
- Event Log Summary
- Unix family systems view of Linux, BSD and Mac OS X,
- 3500+ Pre-compiled SNMP MIBs
- Automatic Network Discovery and Configuration
- Traffic Monitoring for PFix, NetFlow (v5 & v9), JFlow, netStream, CFlow, AppFlow, and rFlow
- Port Mapping on each switch port status and connected devices

Advanced Network Devices is proud to be National Value Added Distributor for AdremSoft NetCrunch Solution in Canada.



NETWORK DESIGN

Professional Network Architecture & Design Services

Network infrastructure represents a major part of the capital expense of an emerging technology rollout. Ensuring that the infrastructure plan is designed to be cost effective, robust, and flexible in meeting future needs is critical to achieving optimal return on investment.

Advanced Network Devices Network Design Engineering Team (NDET) expert architecture and design team will help you meet these objectives. Our approach utilizes proven tools and methodologies that are founded on extensive technical expertise and significant real-world deployment experience. By partnering with NDET, you are able to plan for optimal network performance at all stages of your network lifecycle from pre-deployment and new service introduction to ongoing expansion.

Network Architecture Services:

- Detailed project plan
- Network topology, traffic and capacity patterns
- Network modelling
- High-level network design
- Physical Layer network design

Network Design Services:

- Engineering Design Package
- System configurations and site-level documentation of configuration parameters
- System installation requirements
- System integration requirements

Achieve Your Objectives:

Leverage experience to efficiently and effectively plan your emerging technology solution. Our team of experts will help to ensure that your objectives are achieved:

- *Minimize cost of ownership* — Maximize returns with minimal investments
- *Accelerate time-to-market* — Bypass the learning curve and speed up your ability to generate revenue
- *Sustain competitive advantage* — Ensure a cost-effective foundation for daily operations that delivers superior performance and intelligent growth.



softing

infilink
TECHNOLOGIES

ekahau

Telegärtner

adrem
software



AND
ADVANCED NETWORK DEVICES



102 Ravine Edge Drive, Richmond Hill, Ontario
L4E 4J6 Canada Tel: +1-905-236-4732
E-Mail: info@and.ca
www.and.ca