



**JAMMED UP  
PURIFICATION  
PROCESS?**

24 SAMPLES AT A TIME  
8 RUNS PER DAY

RELIEVE YOUR  
BOTTLENECKS



192 PURIFICATIONS  
PER DAY

SCHEDULE YOUR FREE WEB DEMO



[cgerdts@pbiosolutions.com](mailto:cgerdts@pbiosolutions.com)



1-630-854-3006

# STREAMLINED SOFTWARE

CONFIGURE YOUR OWN SAMPLE PREPARATION PROTOCOLS



The screenshot shows the ProteinMaker software interface with a table of tasks. The table has columns for 'Method name', 'Method category', 'Order', and 'Status'. The tasks listed are:

Method name	Method category	Order	Status
Wash-Tur	Task	1	Thu Jul 26 09:13:00 2012
Transfer	Task	2	Wed Jul 25 17:13:42 2012
Transfer	Task	3	Wed Jul 25 17:14:40 2012
Transfer	Task	4	Thu Jul 26 09:14:42 2012
Transfer	Task	5	Thu Jul 26 09:14:42 2012
Transfer	Task	6	Thu Jul 26 09:14:42 2012
Transfer	Task	7	Thu Jul 26 09:14:42 2012
Transfer	Task	8	Thu Jul 26 09:14:42 2012
Transfer	Task	9	Thu Jul 26 09:14:42 2012
Transfer	Task	10	Thu Jul 26 09:14:42 2012
Transfer	Task	11	Thu Jul 26 09:14:42 2012
Transfer	Task	12	Thu Jul 26 09:14:42 2012
Transfer	Task	13	Thu Jul 26 09:14:42 2012
Transfer	Task	14	Thu Jul 26 09:14:42 2012
Transfer	Task	15	Thu Jul 26 09:14:42 2012
Transfer	Task	16	Thu Jul 26 09:14:42 2012
Transfer	Task	17	Thu Jul 26 09:14:42 2012
Transfer	Task	18	Thu Jul 26 09:14:42 2012
Transfer	Task	19	Thu Jul 26 09:14:42 2012
Transfer	Task	20	Thu Jul 26 09:14:42 2012

**WE DELIVER** a workhorse for parallel purification. Newly upgraded ProteinMaker™ system control software allows customization of purification protocols. Integration with our built-in knowledge tools for experimental design and method generation is convenient and easily managed. The software provides real-time information about the status of your purification run. When a run is complete, the software helps you analyze and share results.

**1 BUILD, EDIT, AND ARCHIVE YOUR OWN METHODS**

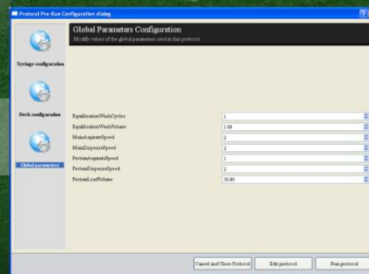
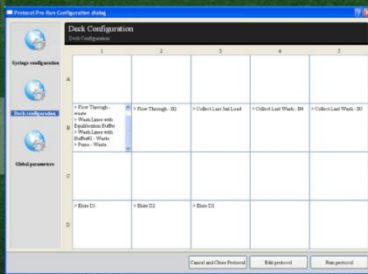
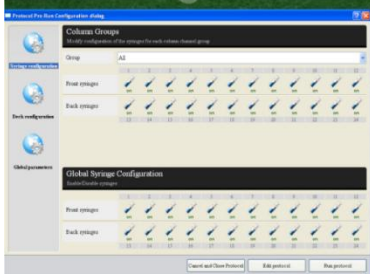
**2 PRE-LOADED PROTOCOLS FOR ROBUST PURIFICATION**

**3 CUSTOM WORKFLOWS ACTIVATED WITH A SINGLE CLICK**

**4 PROGRAMMABLE PAUSE (WITH OPTIONAL TIMER) FOR WALK-AWAY PEACE-OF-MIND**

**PROGRAMMABLE PAUSES, MANUAL OVERRIDES, USER-DEFINED WASH PROTOCOLS AND MORE...**

**5**



# REPRODUCIBLE RESULTS WITH SCALABILITY

**WE APPLIED** our decade of experience with integrated systems for protein expression testing, purification, and crystallization to the ProteinMaker™ to ensure the development of an instrument with highly reproducible chromatographic separation and ease of scalability. Focusing on specific applications for protein purification, the ProteinMaker™ was designed for high throughput, expression analysis, lysis scouting, mutational analysis, Fab purification and antigen production scale up.

**PRODUCE** purified proteins and antibodies in a high-throughput, parallel format

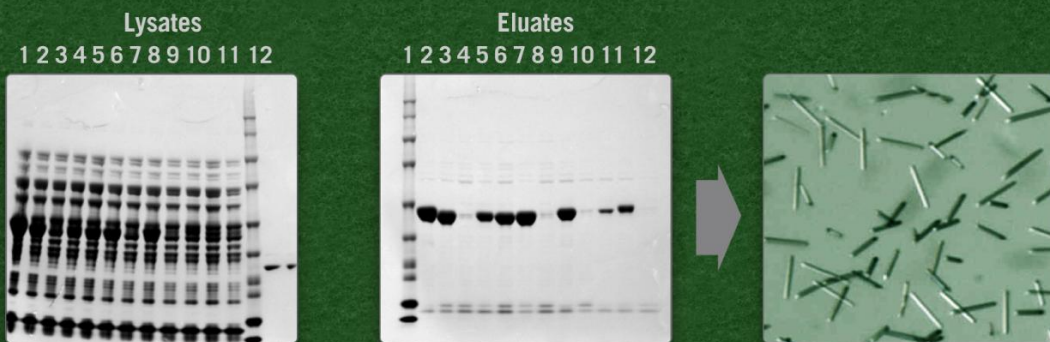
**EVALUATE** gene expression levels

**ANALYZE** functions of different isotypes or clones

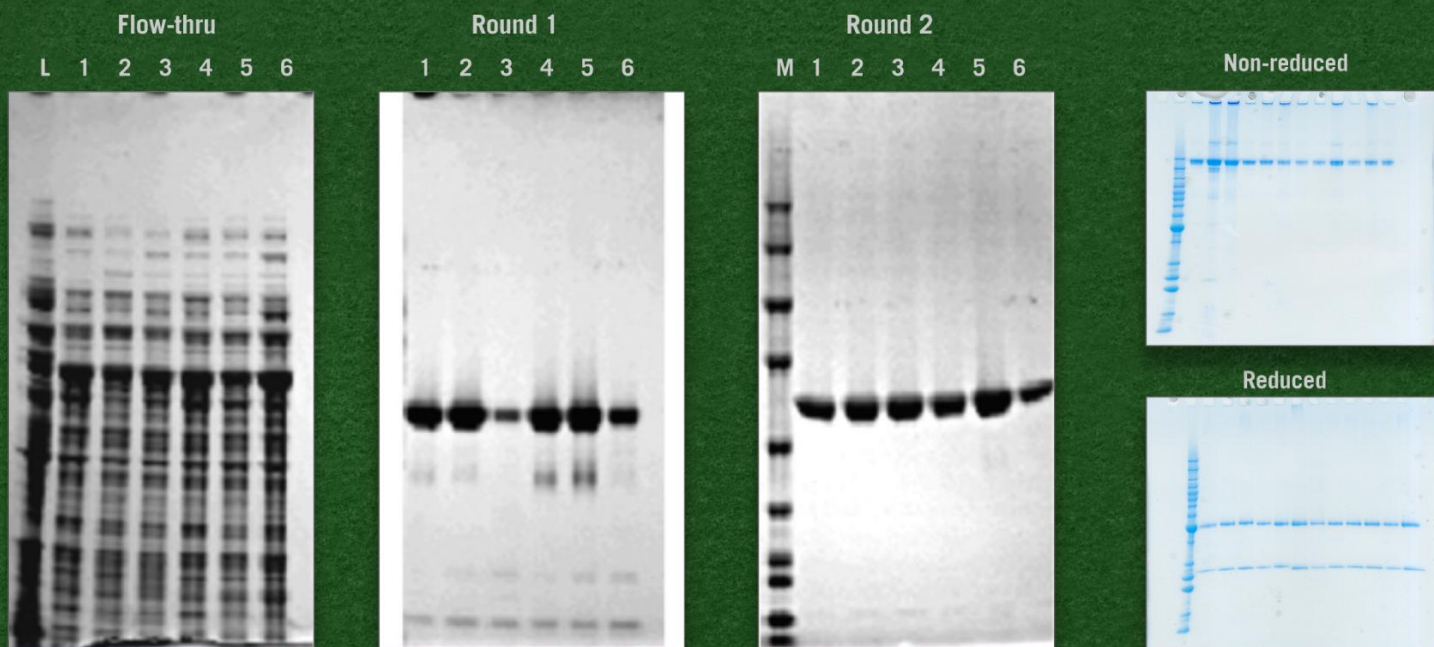
**DETERMINE** the best protein or enzyme purification method for scaling up

**SCREEN** constructs for protein

## Integrating Protein Expression Testing, Purification and Crystallization



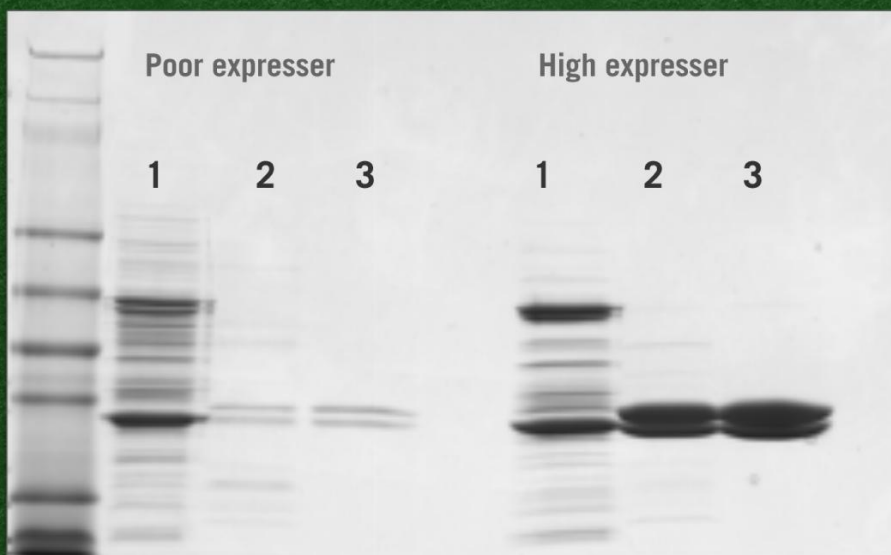
## Purification of His-tagged Proteins with Internal Deletions



## Mutational Analysis, His-tagged Proteins with second run

### Ni-Protein A 2-step Fab purification

- 1: cell-free extract
- 2: Ni-purified
- 3: Ni and Protein A-purified



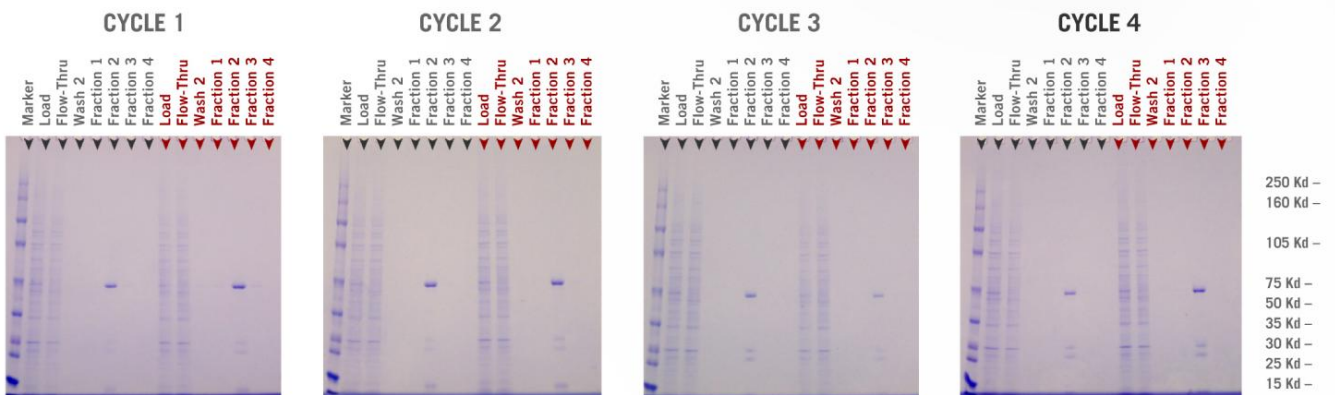
# UNATTENDED PURIFICATION OF TAGGED PROTEIN AND ANTIBODIES

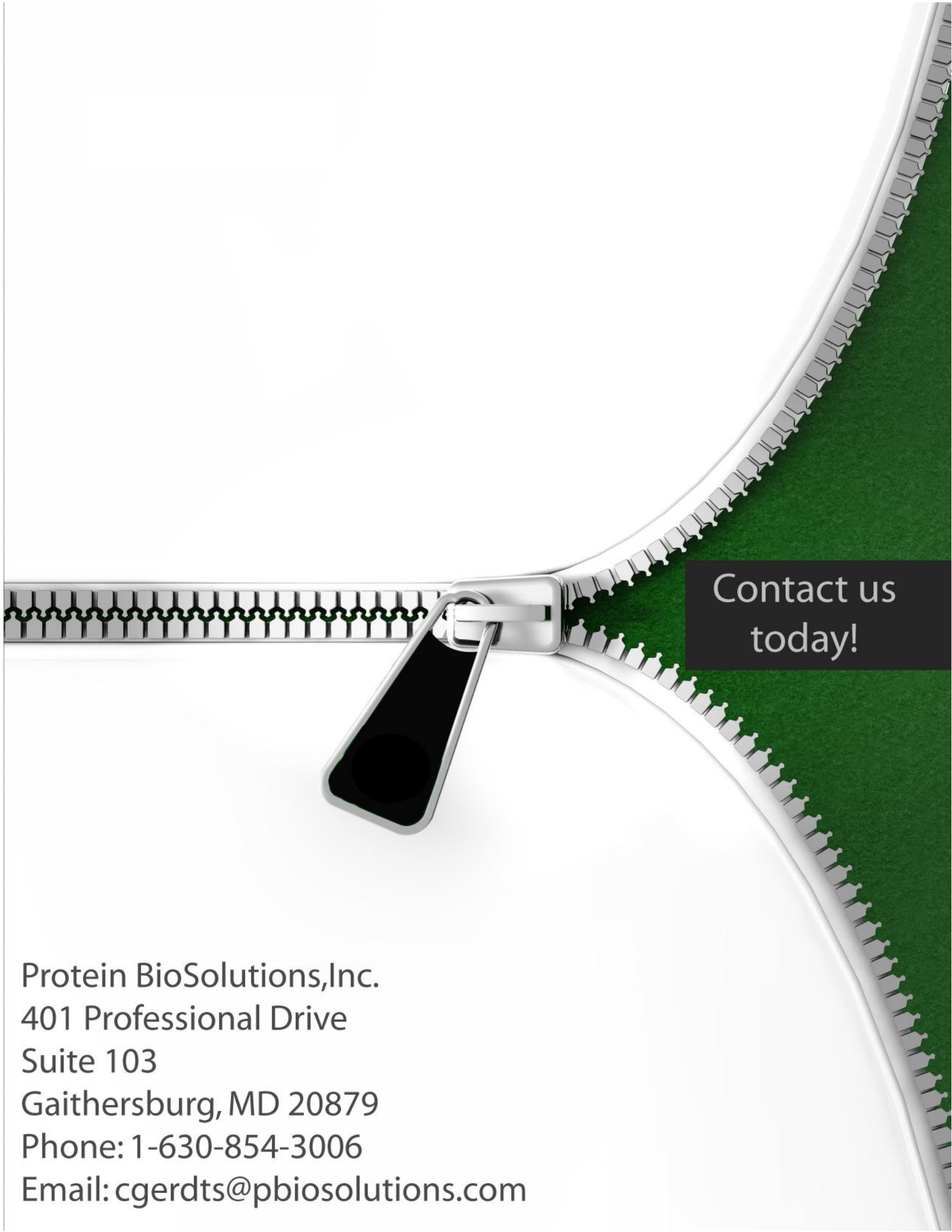
**WE UNDERSTAND** protein purification is often the bottle neck in protein production. Our own high throughput structure biology services suffer jams in our multi-target parallel process workflow. Understanding the need for a robust workhorse with scalability and hands off capability resulted in the innovation of Protein BioSolutions' ProteinMaker™. The ProteinMaker™ has quickly been adopted by antibody engineering and production groups for unattended purification of tagged protein and antibodies.

## PROTEIN MAKER™

### Fab purification Sample Analysis

SDS-PAGE (4-20%) of Fractions  
 ca. 15 ul sample loaded in each lane  
 Each Cycle with samples from 2 x 5 ml Protein A columns  
 Column #1 black, Column #2 brown arrows





Contact us  
today!

Protein BioSolutions, Inc.  
401 Professional Drive  
Suite 103  
Gaithersburg, MD 20879  
Phone: 1-630-854-3006  
Email: [cgerdts@pbiosolutions.com](mailto:cgerdts@pbiosolutions.com)