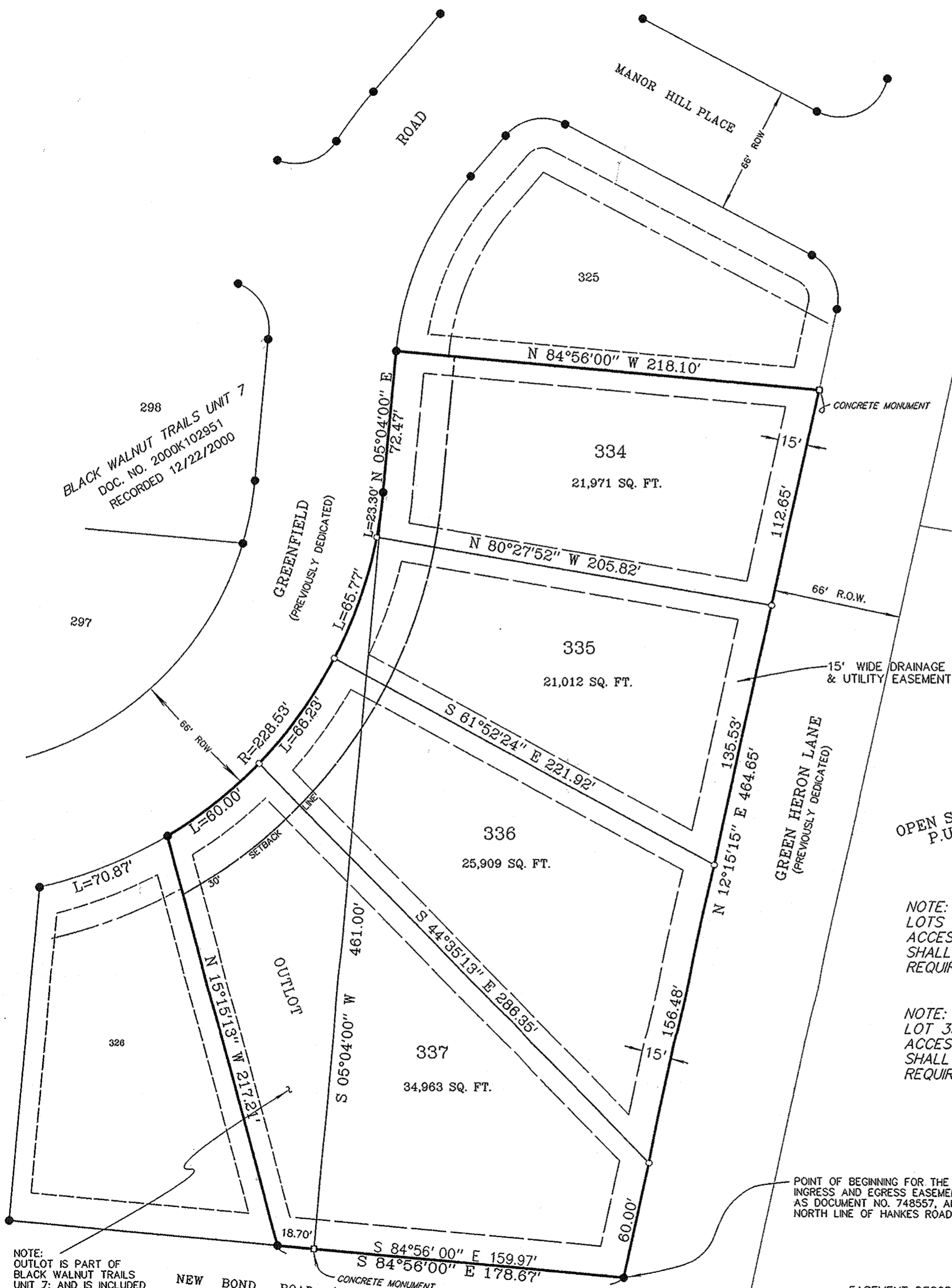


Sandy Wayman
 RECORDER

1" = 50'

0' 50'



EASEMENT DESCRIPTION AND LOCATION

10 FOOT WIDE DRAINAGE AND UTILITY EASEMENTS (D. & U.E.) ARE HEREBY GRANTED ON THE SIDE LOT LINES AND REAR LOT LINES OF EVERY LOT, UNLESS OTHERWISE NOTED. 15 FOOT WIDE DRAINAGE AND UTILITY EASEMENTS (D. & U.E.) ARE HEREBY GRANTED ON THE FRONT LOT LINE OF EVERY LOT, UNLESS OTHERWISE NOTED. ALL COR-