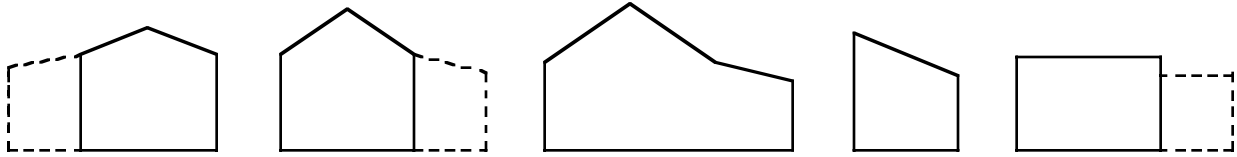


# Griffin Ranch P.U.D. Design Guidelines Supplement

Visual clarification of CC&R's style and design guidelines.

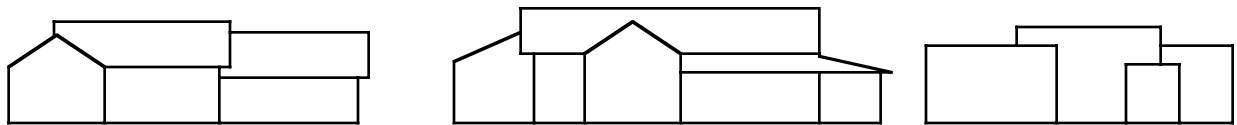
## FORM

Accepted building forms (shapes) are those found in simple rural western homesteads, barns and outbuildings and traditional southwestern buildings. No symmetrical or nearly symmetrical designs.



## MASSING

Massing must be low and horizontal. Two story walls should be broken by additional design elements that are low.



## STYLE

Accepted building styles (look and design elements) are contemporary, modern, western ranch, and southwestern. Buildings should express a sense of horizontally. Multiple design elements attached to a main form are encouraged.



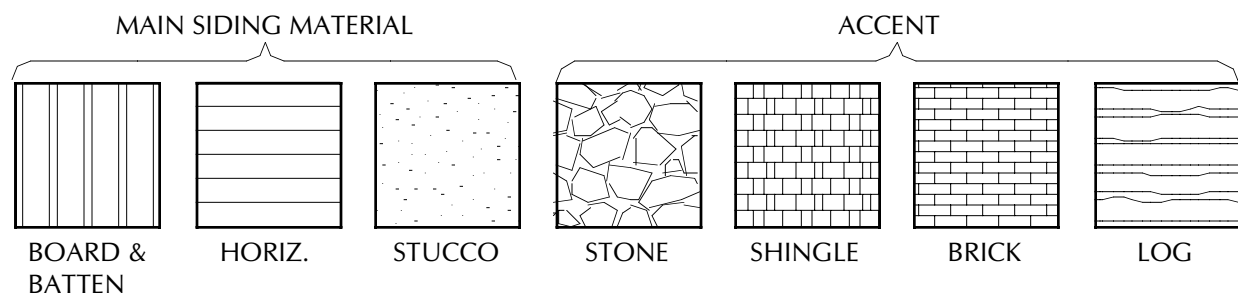
Note: this guideline is meant to be a visual guide to assist homeowners and designers to understand the style and forms desired at Griffin Ranch. The recorded CC&R's and latest amendment govern all designs. Also see "the checklist for Griffin Ranch P.U.D. preliminary design review" and "the checklist for Griffin Ranch P.U.D. full design review" for additional information.

Prepared by Brandis L. Sarich, April 6, 2004

# Griffin Ranch P.U.D. Design Guidelines Supplement

## MATERIALS

Accepted materials are those that match the styles above and blend with the landscape. Materials must be intrinsic to the design and not tacked on.



## WINDOWS & TRIM

Accepted window types are double-hung, casement, and fixed. Divided light windows are encouraged. Picture windows must be divided with a traditional pattern. Extend head and sill trims past side trim pieces on window and door trim. 5-1/2" minimum width for all trim. Base trims minimum 9-1/2" (if used). Fascia trim made of single or multiple solid wood pieces. Stucco finish houses shall use wood accent trim and no stucco "bump-out" details at windows and doors.



Note: this guideline is meant to be a visual guide to assist homeowners and designers to understand the style and forms desired at Griffin Ranch. The recorded CC&R's and latest amendment govern all designs. Also see "the checklist for Griffin Ranch P.U.D. preliminary design review" and "the checklist for Griffin Ranch P.U.D. full design review" for additional information.

Prepared by Brandis L. Sarich, April 6, 2004