





















CAUTION

- * This is not a toy. It is only suitable for adults and models aged over 14.
- * The actual model may vary from the image on the box.
- * This is a precision model kit which requires assembly.
- * This model kit includes photo-etched parts and decals.

LARC-V (Vietnam War) US Army Amphibious Cargo Vehicle

1/35 SCALE



LARC-V (Vietnam War) US Army Amphibious Cargo Vehicle

35GM0038

1/35 SCALE

MADE IN CHINA



14+

WARNING! New children's toys should be used under supervision of an adult.



...and although about 500 were...
 service for a long time, and were useful enough for the US...
 Navy to introduce a service life extension programme (SLEP)...
 which saw nearly 50 survivors rebuilt with new hydraulic...
 transmission, new electrics and on-board systems. The first of...
 these rebuilt LARC-Vs entered service during 2006. The first of...
 LARC-Vs are/were also used by the armed forces of Argentina...
 Australia, Germany. The Philippines, Portugal and Singapore...
 Surplus examples are used by NGOs for disaster relief and by...
 private operators who use them for fishing and "Duck Tours"





RC-502-1
SIGNAL CORPS
U.S. ARMY
L.S.N. SERIAL NO. 20220

SIGNAL CORPS U.S. ARMY
RADIO RECEIVER AND
TRANSMITTER RC-502-1
L.S.N. SERIAL NO. 20220

WARNING
POWER SUPPLY UNIT IS HOT

CONQUEST
TO NOWHERE
The Campaign for the Isthmus

SIGNAL CORPS U.S. ARMY
RADIO RECEIVER AND
TRANSMITTER BC-659-
L.S.D. SERIAL NO. 5836

SIGNAL CORPS 18-171

4000 OHMS
FIL. CHECK PLATE OPER. A B VOLU
OFF

SIGNAL CORPS
POWER SUPPLY UNIT PE-117-C
GGG 2514-CHI-42

WARNING
CHECK SETTING OF CHANGE-OVER LINKS
FOR PROPER BATTERY VOLTAGE BEFORE
CONNECTING TO VEHICULAR BATTERY.
DIAGRAM UNDER INSIDE PACK COVER.



RF-LSB-7A2

SIGNAL CORPS U.S. ARMY
RADIO RECEIVER AND
TRANSMITTER SC-659-
L.S.D. SERIAL NO. 2834



4000 OHMS

PLATE OPER. VOLTS

PH. CHECK

OFF

SIGNAL CORPS
POWER SUPPLY UNIT PE-117-
SERIAL NO. 2814-2814-2

WARNING
CHECK SETTING OF CHANGE-OVER SWITCH
FOR PROPER BATTERY VOLTAGE SELECTION
CONNECTING TO VEHICULAR BATTERY.
DIAGRAM SHOWN INSIDE FRONT COVER.









SIGNAL CORPS
POWER SUPPLY UNIT PE-117-C
CGO 2514-CHI-42

WARNING
CHECK SETTING OF CHANGE - OVER LINKS
FOR PROPER BATTERY VOLTAGE BEFORE
CONNECTING TO VEHICULAR BATTERY.
DIAGRAM UNDER INSIDE PACK COVER

LIBERTY
A. PLATE
L3
97
T2
T3
T4
CAN II MS



SIGNAL CORPS
POWER SUPPLY UNIT PE-117-C
2514-CHI-42
CC03
WARNING
CHECK SETTING OF CHANGE-OVER LINKS
FOR PROPER BATTERY VOLTAGE SELECTION.
CONNECTING TO THE INSIDE TRACK CIRCUIT
DIAGRAM SHOULD BE INSIDE TRACK CIRCUIT

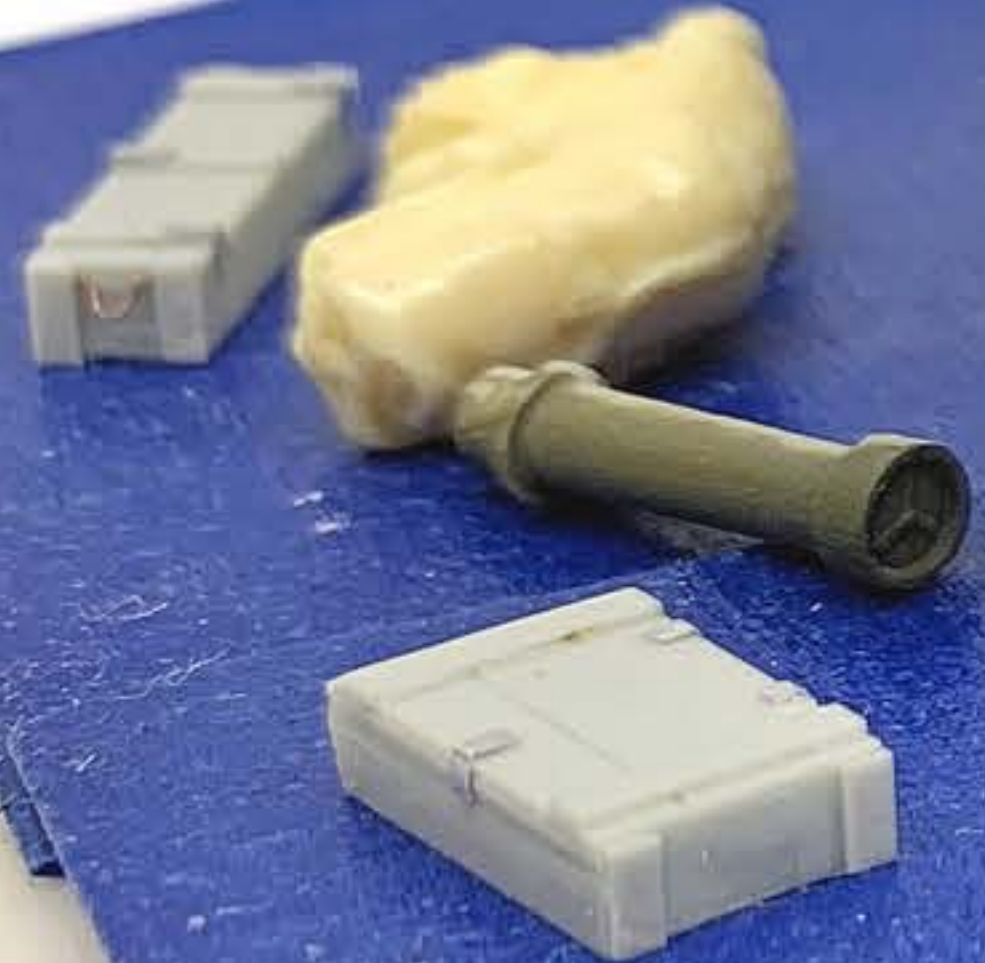
COM
TO
W
A
ntryman in
BERT

VT-185 JAN-3D6
METERING SOCKET
VT-185 JAN-3D6
MIXER
REFER GR
B6 A6 B5
P. A. PLATE
1 2 3 4 5
L3 L4 L5
L6 L7 L8
L3 L4 L5
L6 L7 L8













12JAN22 Meeting:

[Regular meeting at FireFly Toys & Games; ran by Mike Roof, and 9 other club members attended]

1. M1 Abrams (Hasegawa + some ESCI parts, a few scratch-made details), 1/72 – Jeff Nelson
2. T-55 Syrian Army (Tamiya, scratchbuilt Re-Bar Cage Armor, Value Gear & Apoxie Sculpt Stowage & tarps, Jewel resin Bricks), 1/48 – Rebecca Abbott
3. T-34/76 Mod 1942 Hex Turret (DML + HQ72 resin base), 1/72 – Tony Abbott
4. Sd.Kfz.182 King Tiger, Henschel Turret "113", Belgium '44 (Tamiya 35160, Cavalier Zimmerit, partial Verlinden Interior, Aber & Voyager PE, 3D printed Tool Clamps, Fruel Tracks, Stalingrad Miniatures/MB/MiniArt/other Figures, Jordio Rubio metal Barrel), 1/35 – John Sherrer
5. German King Tiger "Production Turret" (Tamiya). 1/48 – John "Turkey" Melton
6. LARC-V (Vietnam War) US Army Amphibious Cargo Vehicle (Gecko Models kit 35GM0038), 1/35 - Bryan Moeller [Christmas Presents, what a VERY lucky guy!]
7. WWII Radio Set SCR-610 (BC-659 Transmitter-Receiver + PE-117 Plate Supply Unit) (US Army Signal Corps), 1/1 – Mike Roof

Raffle Nope (we did talk about maybe having one next month).