

Residential Rules for Arlington Woods HOA

1. Limit of 2 33 Gal containers or 2 bags per week.
2. Weight limit of 40 lbs per container.
3. Not accepted items

- Car batteries

- Paint

- Tires

- Gas Cans

- Used oil

- Hazardous Waste of any kind.

- Cement, brick or stone

- Carpet bigger than 2' x 4' sections

Larger bulk items should be called in for bulk item pick up. See attached lists.

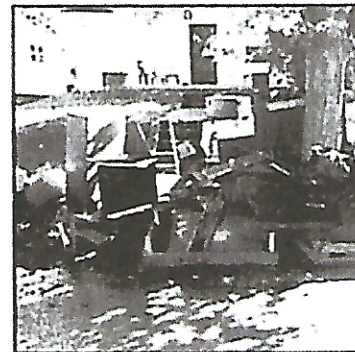
Acceptable Bulk Items

- BBQ Grill
- Bicycle
- Kitchen Chair,
- Door or Door Frame (cut in half).
- Small Dresser,
- End Tables,
- Headboard (cut to 4')
- Plastic Kids Pool,
- Sectional Couch (each section),
- Sink,
- Twin, Full, Queen, and King size mattresses
- Vacuum,
- Wood Bundle (cut to 4' tied, nails pounded down)
- Small Sofa,
- Kitchen Table (cut to 4' & remove legs),
- Pool Filter (no sand),
- Pool Liner (cut to 4', rolled, tied)
- Shower Doors (tape to keep glass from shattering)
- Small TV-Tube Style,
- Large TV- Flat Screen, Stereo,
- Toilet (disassemble tank from bowl),
- Vanity (sink removed)
- Bath Tub (no cast iron, cut to 4'),
- Recliner,
- Couch,
- Garage Door (cut to 4'),
- Hot Tub (cut to 4'x4')
- Picnic Table (cut to 4'),
- Large TV-Tube Style
- Snow Blower (fluids removed),
- Rototillers (fluids removed),
- Lawn mower - Push Style (fluids removed),
- Air Compressor,
- Basketball Hoop and Pole (disassembled, cut to 4', no sand in base or concrete),
- Cabinets, (cut to 4'),
- Swing Set (cut to 4', no cement),
- Treadmill (disassembled),
- Console TV (TV removed from surround)
- Carpet and Padding rolls (cut 2'x4', rolled and tied)

Non-Acceptable Bulk Items

- Barrels
- Batteries
- Boilers
- Cars, Trucks, Motor Homes, Buses, Boats,
- Riding Lawn Mowers (No Vehicles)
- Car parts
- Corrosive Waste
- Copy Machines
- Cast Iron
- Cement, Bricks, Rocks, Dirt
- Empty tanks
- Electric Wheelchairs
- Fire extinguishers
- Flammable Waste
- Fluorescent light tubes (large quantities)
- Hazardous Waste (including air conditioners, refrigerators, freezers, dehumidifiers-unless the Freon has been professionally removed and item is tagged by professional)
- Liquids
- Medical Waste (see Medical/Sharps Disposal Notes section)
- Paint (can accept if dry or hardened)
- Pianos
- Radioactive waste
- Railroad Ties
- Reactive Waste
- Septic Waste
- Sewage treatment plant solids
- Tires
- Used Oils -motor, hydraulic, mineral, cutting, etc.

*To the right:
Improperly placed
bulk: wood is not
cut up and tied
into 4 ft. sections
and nails are not
knocked down or
removed*



Bulk Preparations

- We recommend that mattresses and box springs be wrapped in plastic with the seams taped or placed in mattress bag
- Basketball hoops must have backboard removed from pole, pole cut less than 4 ft., sand or water drained from base.
- Hot tubs, bathtubs cut into 2 ft. sections.
- Counter tops, cabinets, cut into 4 ft sections.
- Toilets drained and tank removed from base.
- Wood, branches, carpet must be 2 ft. x 4 ft. sections, bundled and tied with twine.
- Nails must be pounded down or removed.
- Broken glass or mirrors must be in a box, taped shut, then bagged
- Drywall must be broken down and bagged.
- No bags more than 40 lbs



*Above: Properly placed bulk:
everything is bagged, bundled,
and tied in an orderly fashion.*

