

Golden Triangle Decorative Painters
31st Annual Retreat

Thanks for the Memories



Antiochian Village
October 10th – 13th, 2019

Retreat Information

RESERVATION: You must reserve your room **DIRECTLY** with Antiochian. You can register on line through our website by going to GTDP.org, Click on the button marked “Retreat”, click on “Antiochian Registration” which will take you to Antiochian’s website. At the top of the screen click on the “Start Your Registration” button. Fill in the personal information on this page and click next. Pick the button with your choice of the 2 or 3-night stays. Click next. Click on Gluten Free if required. Click Next. Under Dietary Restrictions check either Restriction or No Restrictions. Click next. Your bill will then be shown. Fill out the payment info, click that you agree to their terms and conditions click on either partial payment or payment in full, copy the code. Click submit. Should you need assistance with your registration, please call the Front Desk at Antiochian Village and they will be happy to assist you. 724-238-3677. Antiochian is asking that if you are rooming double or triple all roommates MUST register within a week of each other. ***GTDP is not responsible for anything dealing with rooms.***

Room/Meals: 3 nights -	\$440.25 - Private room	\$327.05 – 2 people per room
	\$287.07 – 3 people per room	
2 nights -	\$309.63 - Private room	\$234.15 – 2 people per room
	\$207.51 – 3 people per room	

REGISTRATION: Registration to attend the Retreat and to attend classes **MUST** be sent to Mandy Steele, Registration Chair, **NOT** Antiochian. If you send your registration to Antiochian you will not be registered for the Retreat or classes.

REGISTRATION: **NOTE: We are holding the retreat at the opposite end of the facility Thursday, 2 p.m. again this year.** Registration will be in the hallway and all activities will be held in the Maple Meeting room under the Cedars Cafeteria. Come and socialize with friends throughout the day, enjoy a coffee, tea, water or snack. A light meal will be served here at **4 p.m.**

MAKE-IT/TAKE-IT: There will be a Make-it/Take-it table this year. Teachers will have their projects on display in the Hospitality room but you will need to pay the teachers directly.

CLASS SALES: Any classes available are listed in the Hospitality Room

MEAL TIMES: Meal times are scheduled by Antiochian Village and they are served in the Cafeteria. The schedule is as follows:

Breakfast	7:00 – 8:00 a.m.
Lunch	12:00 – 1:00 p.m.
Dinner	5:00 – 6:00 p.m.

SOCIAL: Saturday **7:00 p.m.**

BANQUET: Sunday **1:00 p.m.**

General Information

1. If your registration fee does **not** accompany your registration form, you will **not** be considered registered. You **must** be registered in order to take classes. The Sunday Banquet is included in the registration fee.
2. **The cost of each class consists of the following two (2) fees:**

(1) **Class Fee:** 4-hour class: \$13 members
 \$14 non-members
 6-hour class: \$19 members
 \$20 non-members

(2) **Project Fee:** Amount listed under class selected.
This fee includes paint, surface picture, pattern and instructions.
This fee is paid directly to the teacher. Make checks payable to the teacher.
3. **In selecting classes, use the following guidelines:**

Beginner	Taught at a slow pace with teacher assistance.
Intermediate	Taught at a medium pace with moderate teacher assist.
Advanced	Taught at a brisk pace with minimal teacher assist.
4. **Bring your normal painting supplies to class.** This includes brushes, palette, paper towels, brush cleaner (odorless but baby oil preferred) two water containers, graphite paper (black & white), stylus, etc. If any special supplies are required, they will be listed in the class description.
5. **The art of decorative painting uses products that may cause adverse reactions to those with sensitivity. You are asked to use your judgment as to classes that you attend. GTDP assumes no liability for these products. Absolutely no sprays, odorless turp or products labeled "hazardous" may be used inside or near open doors or windows at Antiochian Village.**

Class Confirmations & Class Vouchers

Please include your email address for your confirmation, if available. They will only be mailed, if you included a self-addressed stamped envelope. Email is the preferred way as it is quicker. If you do not submit either you will receive your class vouchers at Retreat Registration.

Project Fees (payable to Teachers)

In each classroom, a monitor will take attendance and collect the envelopes containing the project fee to be paid directly to the teacher. Please prepare an envelope for each class. Enclosed in the envelope should be:

- (1) **Class Voucher**
 (2) **Project Fee** – either check made payable to the **Teacher** or exact cash.
The monitors do not have change.

You will not be able to take the class without a Class Voucher from either Registration or Class Sales.

Thursday, October 10, Evening Class
6:00 p.m. – 10:00 p.m.



4 hours - Rosemary Habers

“Let it Snow”

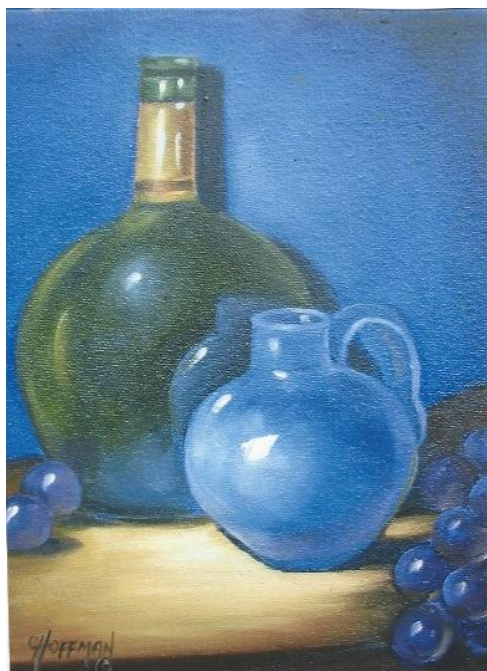
Level: Beginner, Intermediate, Advanced

Medium: Acrylic

Size/Surface: 22" X 28" Cloth

Supplies: Regular Painting Supplies

Cost **\$18.00**



4 hours - Carol Hoffman

“Green & Blue”

Level: Beginner

Medium: Oil

Size/Surface: 8" X 10" Canvas

Supplies: Scarff #4, #6, #8, #10 Bright Flats

Cost **\$18.00**

Thursday October 10, Evening Classes
6:00p.m. -10:00p.m.



4 hours - Rosann Wagner

"Made in America"

Level: Beginner/Intermediate/Advanced

Medium: Acrylic

Size/Surface: 4" X 8" Wood Ornament

Supplies: Normal Painting Supplies

Cost: \$15.00



4 hours - Laura Angelo

"Morning Coffee"

Level: Beginner/Intermediate

Medium: Acrylic

Size/Surface: " 5 1/2" X 13" Black Banner

Supplies: Stipple Brush or Whisk Brush for fur.

Cost: \$15.00

Thursday October 10, Evening Classes
6:00p.m. –10:00p.m.



4 hours – MaryAnn Yurus
“Chickadee & Cherries”

Level: Intermediate

Medium: Acrylic

Size/Surface: 8” X 10: Canvas Board

Supplies: Regular Painting Supplies.

Cost: \$20.00



Main Building. Check in here.

Friday October 11, Morning/Afternoon
9:00a.m. – 12:00p.m. and 1:00p.m. – 4:00p.m.



6 hours - Rosemary Habers
"Gourds"

Level: Beginner, Intermediate, Advanced

Medium: Acrylic

Size/Surface: 11" Wood Plate

Supplies: Small stiff brush

Cost: \$22.00



6 hours - Janine Stiffler
"Single Dad"

Level: Intermediate

Medium: Watercolor Pen & Ink

Size/Surface: 8 " X 10 " Watercolor Paper (11" X 14" mat and pen included)

Supplies: Regular Painting Supplies

Cost: \$17.00

Friday, October 11, Morning
9:00a.m. – 12:00p.m. and 1:00p.m. – 4:00p.m.



6 hours - Elaine Walker
"Trumpet Lily"

Level: Intermediate

Medium: Watercolor

Size/Surface: 16" X 20" Watercolor Paper. Mat included

Supplies: Liner, #7 Round Brush, Wash Brush

Cost: \$28.00



6 hours - Carol Hoffman
"Lavender Blue Still Life"

Level: Intermediate/Advanced

Medium: Oil

Size/Surface: 11" X 14" Canvas

Supplies: Good Scharff #2, #4, #8,#10, Bright Flats, Liner, Tissues

Cost: \$25.00

Friday October 11, Morning/Afternoon
9:00a.m. – 12:00p.m. and 1:00p.m. – 4:00p.m.



6 hours - MaryAnn Yurus
"Spring Time"

Level: Intermediate

Medium: Acrylic

Size/Surface: 8" X 10" Wood or Masonite

Supplies: Acrylic Brushes

Cost: \$25.00



Remember these guys from the early years

Friday, October 11, Evening
6:00p.m. – 10:00p.m.



4 hours - Sandra Joy Camarota

"9 Point White Tail Buck (Abstract)"

Level: Beginner/Intermediate/Advanced

Medium: Watercolor

Size/Surface: 8" X 10" watercolor paper. Mat included.

Supplies: Regular watercolor brushes, 2 water containers, Liner, Kleenex

Cost: \$14.00



4 hours - Laura Angelo

"Willow's Cockatoo"

Level: Beginner/Intermediate/Advanced

Medium: Acrylic

Size/Surface: 7" X 10" Mouse Pad

Supplies: 3/8" Lunar Blender, Filbert, (stiff nylon brush) liners

Cost: \$15.00

Friday October 11, Evening Classes
6:00p.m. – 10:00p.m.



4 hours - Mandy Steele
"Dogwood Blooms"

Level: Beginner

Medium: Oil

Size/Surface: 6" X 8" Wood Picture Frame

Supplies: #2 & #4 Flat or Filbert Sable Brushes, #0 spotter, Small Mop,
Small container for baby oil.

Cost: \$15.00



4 hours - Jeanne Delbusso
"Butterfly Gourd"

Level: Beginner

Medium: Transparent Acrylics

Size/Surface: Gourd. (Can be ordered with hole as a birdhouse or without.
List which on your registration form)

Supplies: Normal Painting Supplies

Cost: \$25.00

Friday October 11, Evening Classes
6:00p.m. – 10:00p.m.



4 hours - Janet Hylton

"Mr Snowman"

Level: Beginner

Medium: Acrylic

Size/Surface: 12" X 18" Roc-Lon

Supplies: Normal Painting Supplies

Cost: \$20.00



Saturday, October 12
9:00a.m. – 12:00p.m. and 1:00p.m. – 4:00p.m.



6 hours - Rosemary Habers
"Chocolate Candy"

Level: Intermediate/Advanced

Medium: Acrylic

Size/Surface: 11" X 12" Paper Mache Heart Box

Supplies: Normal painting supplies

Cost: \$15.00



Saturday, October 12
9:00a.m. – 12:00p.m. and 1:00p.m. – 4:00p.m.



6 hours - Viki Sherman
"Crabbe Point Lighthouse"

Level: Intermediate

Medium: Acrylic

Size/Surface: 10" X 14" wood

Supplies: Palette Knife

Cost: \$13.00



6 hours - Carol Hoffman
"Green Pottery & Grapes"

Level: Intermediate/Advanced

Medium: Oil

Size/Surface: 11" X 14" Canvas

Supplies: Good Scharff, #4, #8, #10, Bright Flats, Liner, Mop, Tissues
Acrylic-#4, #8 for Undercoating fusions

Cost: \$25.00

Saturday, October 12
9:00a.m. – 12:00p.m. and 1:00p.m. – 4:00p.m.



6 hours - Lynne Banting
"Analogous Blossoms"

Level: Intermediate

Medium: Watercolor

Size/Surface: 8" X 10" Watercolor Paper.

Supplies: 1/2" Flat, Liner, #6 Round, #8 Round brush 2 water containers

Cost: \$19.00



6 hours - Dot Hoffman
"Christmas Angel Cards"

Level: Beginner/Intermediate

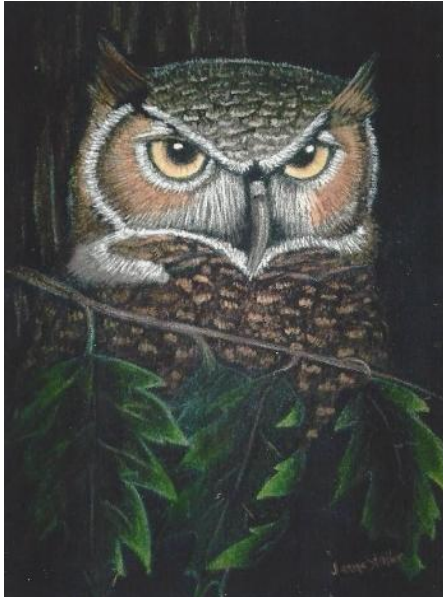
Medium: Pen & Ink Acrylic

Size/Surface: 9" X 12" matted watercolor & 20 4½" X 6" cards with envelope

Supplies: Regular painting supplies and good small filbert and liner

Cost: \$25.00

Sunday, October 13
8:00a.m. – 12:00p.m.



4 hours - Janine Stiffler

"Night Owl"

Level: Beginner

Medium: Colored Pencil

Size/Surface: 8" X 10" Suede Board (11" x 14" Mat Included)

Supplies: Pencil sharpener, white transfer paper

Cost: \$19.00



4 hours - Viki Sherman

"Lamplighter"

Level: Intermediate

Medium: Acrylic

Size/Surface: 11" x 7" MDF (Wood)

Supplies: Normal Painting Supplies

Cost: \$13.00

Sunday October 13
8:00a.m. – 12:00p.m.



4 hours - MaryAnn Yurus

"Blue Birds Home"

Level: Intermediate

Medium: Watercolor Pen & Ink

Size/Surface: 11" X 14" Watercolor Paper. Includes Double Mat and Pen

Supplies: Regular painting supplies

Cost: \$25.00



4 hours - Sandra Joy Camarota

"Abstract Goose"

Level: Beginner/Intermediate

Medium: Watercolor

Size/Surface: 8" X 10" Watercolor paper. Mat included

Supplies: Assorted Rounds, #6 Liner, Eraser, Kleenex, 2 Water Containers

Cost: \$15.00

Sunday, October 13
8:00a.m. – 12:00p.m.



4 hours - Lynne Banting

“Pink Flamingo”

Level: Intermediate

Medium: Water Soluble Oil (NO SOLVENTS – ONLY WATER)

Size/Surface: 5" " X 10" Baltic Birch. Lace trim available

Supplies: Acrylic Brushes Assorted Rounds & Flats

Cost: \$16.00

Art Show

Due to lack of past interest we will not be having an Art Show this year. Thank you to those who have participated in the past.



2019 Retreat Teachers

Laura Angelo
Lynne Banting
Sandra Joy Camarota
Jeanne Delbusso
Rosemary Habers
Carol Hoffman
Dot Hoffman
Janet Hylton
Viki Sherman
Mandy Steele
Janine Stiffler
Rosann Wagner
Elaine Walker
MaryAnn Yurus



2019 Retreat Board

Chairman	Carol D'Abrusso
Co-Chair	Linnea Ondick
Banquet	Mandy Steele
Hospitality	Laura Angelo
Make-it/Take-its	Rosemary Habers
Monitors	Rhonda Gillespie
Name Tags	Jeanne Delbusso
Registration	Mandy Steele
Retreat Book	Rosemary Habers
Teacher Chair	Rosann Wagner
Treasurer	Rosemary Habers

2019 GTDP Board

President	Rosann Wagner
1st VP/Programs	Cindi Martincic
2nd VP Membership	Rhonda Gillespie
Corresponding Secretary	Pat Jenkins
Decorative Painting Month	Rhonda Gillespie
Historian	Delores Khalouf
Hospitality	Susan Jaap
Newsletter Editor	Rosemary Habers
Nominating	Carol Keller
Parliamentarian	Mandy Steele
Points System	Karen Pagasky
Publicity	MaryAnn Yurus
Recording Secretary	Laura Angelo
Service	Carol D'Abrusso
Retreat Chairman	Carol D'Abrusso
Spring Basket Luncheon	Karen Pagasky
Treasurer	Rosemary Habers

Visit our Website at GTDP.org

NOTES



Remember Ligonier Days

Ligonier, PA 15658
724-238-3677

Directions: *From Pittsburgh:*

Travel East on the Pennsylvania Turnpike (I-76) to exit 9 at Donegal. Exit toll and turn left, follow signs for Ligonier/Rt. 711 North. Stay on 711 North for 13 miles. At the intersection of Route 30, cross Route 30 and proceed around the Town Square Gazebo. Stay on 711 North, traveling through the town of Ligonier. Antiochian Village entrance is on the right approximately 7.5 miles from the Town Square Gazebo.

Telephone Calls: Telephones in the rooms require activation at the Receptionist for outgoing calls. For incoming calls, people can call the main number of **Antiochian (724) 238-3677**, and ask to be transferred to your room or leave a message.

Antiochian Village is a Smoke-Free Facility.



Let's not forget the beautiful scenery.



And most important..the people

THURSDAY 6pm - 10pm	Let it Snow Rosemary Habers (A-4hr – B)	MaryAnn Yurus Chickadee & Cherries (A - 4hr-I)	Laura Angelo Morning Coffee (A – 4hr – B/I)	Carol Hoffman Green & Blue (O- 4hr-B)	Rosann Wagner Made in America (A-4hr- B)
BREAKFAST					
7am - 8am					
FRIDAY 9am - 12pm	MaryAnn Yurus Spring Time (A-6hr-I)	Carol Hoffman Lavender Blue Still Life (O - 6hr-O)	Elaine Walker Trumpet Lily (W - 6hr-I)	Rosemary Habers Gourds (A - 6hr-I)	Janine Stiffler Single Dad (P&I-6hr-I)
LUNCH					
12pm - 1pm					
1pm - 4pm	Spring Time Part 2	Lavender Blue Part 2	Trumpet Lily Part 2	Gourds Part 2	Single Dad Part 2
6pm - 10pm	Janet Hyton Mr. Snowman (A - 4hr -B)	Sandra Joy Camarota 9 Point White Tail Buck (W-4hr-B/I/A)	Laura Angelo Willows Cockatoo (A-4hr-B)	Mandy Steele O 4hr-B)	Jeanne Delbusso Butterfly Gourd (A-4hr-B)
SATURDAY 9am - 12pm	Rosemary Habers Chocolate Candy A -6hr - I)	Viki Sherman Crabbe Pt Lighthouse (A – 6hr-I)	Lynne Banting Analogous Blossoms (A - 6hr-I)	Dot Hoffman Christmas Angel Cards (P & I- 6hr-I)	Carol Hoffman Green Pottery & Grape (A – 6hr)
DINNER					
5pm - 6pm					
1pm- 4 pm	Chocolate Candy Part 2	Crabbe Pt Lighthouse Part 2	Blossom Part 2	Christmas Angel Cards Part 2	Green Pottery Part 2
SUNDAY 8 am - 12pm	Lynne Banting Pink Flamingo (O-4hr-I)	Janine Stiffler Night Owl (CP-4hr-B)	Sandra Joy Camarota Abstract Goose (A-4hr-B//A)	MaryAnn Yurus Blue Birds Home (WC/P&I)-4hr-I)	Viki Sherman Lamplighter (A-4hr-I)
B=Beginner I=Intermediate A=Advanced A=Acrylic O=oil W=Watercolor CP=Color Pencil P=Pastels					