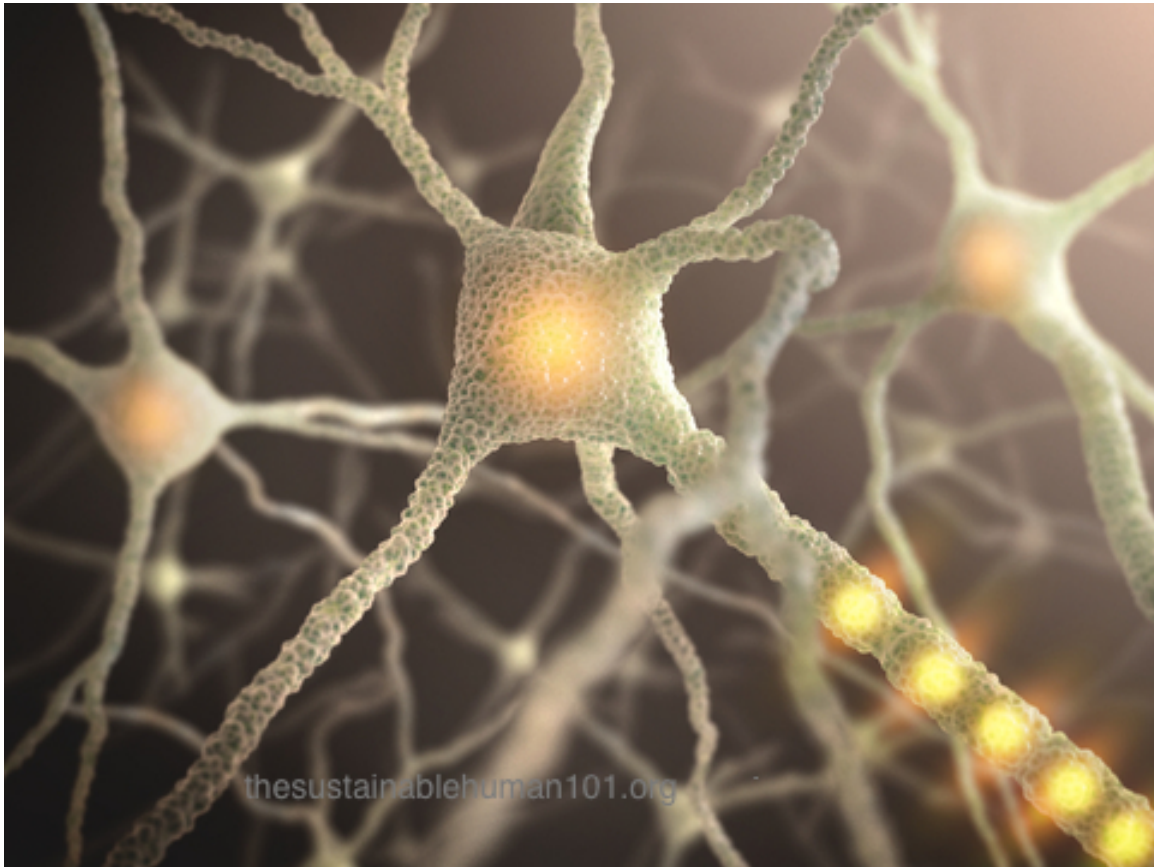


CEO: "heads up - heart merger" #valueadded



The Body Feels, Responds, and Creates what the Mind Perceives and Believes.

We have a mind, a consciousness that has a function and purpose that is quite different than the job of the physical brain. Our mind or consciousness happens to be the CEO and director of all our physical experiences.

What are some of the attributes of a responsible and wise CEO, meaning each of us as the president and executive managing officer of our own physical experience?

A wise and compassionate CEO wants to know how something will benefit the whole, and creates situations and circumstances that will guide and direct all aspects of decision making with that intent.

As the managing director of your Human Presence and thus, your experience, you may begin with just one simple question.

Ask: How, as I make this next choice and decision of action, does it not only impact me but by extension of my connection - the *whole*?

This single shift in thought reassigns a new meaning to a position of power. Coming from this understanding of connection, interconnectedness, and assignment of action from this perspective of benevolent attribute: "*the one effects the whole*", allows room for New Ideas and Points of Reference to come to your awareness. Consciously choosing to shift to this perspective invites what we have previously termed *Miracles* to manifest in our reality.

Miracles just don't happen, we create them, and doesn't that feel better?

To learn more:

<http://www.thesustainablehuman101.org/hub.html>