

Imperial FRESH MARKETS

5800 CANIFF AT MOUND
DETROIT, MICHIGAN 48212 • 313-893-1414
MONDAY TO SATURDAY: 8am - 8pm • SUNDAY: 8am - 7pm

14424 SCHAEFER HWY CORNER OF LYNDON
DETROIT, MICHIGAN 48227 • 313-934-0325
MONDAY TO SATURDAY: 8am - 9pm • SUNDAY: 8am - 8pm

1940 EAST 8 MILE AT DEQUINDRE
DETROIT, MICHIGAN 48234 • 313-366-0670
MONDAY TO SATURDAY: 8am - 8pm • SUNDAY: 8am - 7pm



GET OUR ADS SENT
DIRECTLY TO YOUR PHONE!
TEXT 'JOIN' TO
1 (833) 452-3238

imperialfreshmarkets.com

APOLLO

Market Place



apollomarketplace.com

20250 WEST 7 MILE AT EVERGREEN
DETROIT, MICHIGAN 48219 | 313-538-0000
MONDAY TO SATURDAY 8am - 9pm | SUNDAY 8am - 7pm

Support Your Neighborhood Grocery Store!



14 DAYS OF HOT BUYS! WATCH FOR OUR NEXT AD OCT. 18TH!

HOT BUY

USDA Inspected Beef
Bone-In
Chuck Roast

\$4.99 lb.

HOT BUY

USDA Inspected Beef
T-Bone or
Porterhouse
Steaks

\$4.99 lb.

HOT BUY

Fresh
Boneless Skinless
Chicken Breast

\$2.88 lb.

HOT BUY

Fresh
Chicken
Drumsticks
or Thighs

88¢ lb.

HOT BUY

USDA Inspected Pork
Boneless
Center Cut
Pork Chops

\$2.49 lb.

HOT BUY

USDA Inspected Pork
Country Style
Pork Ribs

\$1.79 lb.

HOT BUY

USDA Inspected Beef
Denver Steaks

\$4.79 lb.

HOT BUY

Bob Evans
Sausage Links
or Patties

\$5.99

HOT BUY

Eckrich
Bologna or
Cotto Salami

3/\$5

HOT BUY

Armour
LunchMakers

4/\$5

HOT BUY

Eckrich
2-Piece Sausage
or Links

2/\$6

Halos
Clementines

\$4.99

Pineapples

2/\$7

Bolthouse
Juice

2/\$5

Mini
Carrots

2/\$3

Dutch Farms
Shredded,
Chunk or
Sliced Cheese

2/\$4

Kellogg's
Large Size Cereal

2/\$7

Cheez-It
Crackers

\$2.99

Stouffer's
or Lean
Cuisine
Entrees

4/\$10

Our Family
All Purpose
Flour

2/\$5

Stroh's
Ice Cream

3/\$10

Country
Fresh
Milk

3/\$10

Campbell's
Chicken
Noodle or
Tomato Soup

5/\$5

Faygo
Pop

4/\$11

Dutch Farms
Large Eggs

\$1.88

Better Made
Potato Chips

2/\$5

International
Delight
Flavored
Creamer

\$3.49



We reserve the right to limit quantities & are not responsible for pictorial or typographical errors.



AD EFFECTIVE - OCTOBER 2021

MON	TUE	WED	THU	FRI	SAT	SUN	MON	TUE	WED	THU	FRI	SAT	SUN
4	5	6	7	8	9	10	11	12	13	14	15	16	17



Imperial FRESH MARKETS

5800 CANIFF AT MOUND
DETROIT, MICHIGAN 48212 • 313-893-1414
MONDAY TO SATURDAY: 8am - 8pm • SUNDAY: 8am - 7pm

1940 EAST 8 MILE AT DEQUINDRE
DETROIT, MICHIGAN 48234 • 313-366-0670
MONDAY TO SATURDAY: 8am - 8pm • SUNDAY: 8am - 7pm

14424 SCHAEFER HWY CORNER OF LYNDON
DETROIT, MICHIGAN 48227 • 313-934-0325
MONDAY TO SATURDAY: 8am - 9pm • SUNDAY: 8am - 8pm



DOUBLE MANUFACTURERS COUPONS UP TO 50¢
SEE DETAILS IN STORE



Grocery Favorites

Jif Peanut Butter
15.5 - 16 oz.
2/\$5

General Mills Large Size Cereal
Cheerios (11.5 - 15.4 oz.) or Oat Crunch Almond (18.2 oz.), Lucky Charms (14.9 oz.), Cocoa Puffs (15.2 oz.), Golden Grahams or Reese's Puffs (16.7 oz.) or Cinnamon Toast Crunch (16.8 oz.)
2/\$7

Barilla Pasta
(12 - 16 oz.) or Ready Pasta (8.5 oz.) (excludes lasagne)
4/\$5

Our Family Chicken or Beef Broth
14.5 oz.
4/\$3

Our Family Egg Noodles
(12 - 16 oz.) or Lasagna (16 oz.) or Oven Ready Lasagna or Jumbo Pasta Shells (12 oz.)
2/\$3

Our Family Tomatoes
28 oz.
4/\$5

Our Family Gravy
12 oz.
3/\$4

Our Family No Yolks Noodles or Dumplings
12 oz.
2/\$4

Hunt's Snack Pack Pudding or Juicy Gels
4 ct.
5/\$5

Betty Crocker Super Moist Favorites Cake Mix
(15.25 - 16.25 oz.) or Favorites Brownie Mix (18.3 - 19.9 oz.)
4/\$5

Our Family 100% Pure Pumpkin
15 oz.
4/\$5

Quaker Cap'n Crunch Cereal
(16.8 - 18 oz.), Life (18 oz.) or Oatmeal Squares (14.5 oz.)
2/\$7

Our Family Instant Oatmeal
10 - 12 ct.
2/\$5

Kellogg's Nutri-Grain Bars (8 ct.) or Kids Mini Bars (5 ct. pouches) or Rice Krispies Treats Homestyle (6 ct.)
2/\$5

Home Essentials

Angel Soft Bath Tissue
(6 ct. mega or 12 ct. double rolls); or Sparkle Paper Towels (6 ct.)
\$5.49

Our Family Resealable Snack or Sandwich Bags
(30 - 50 ct.) or Pleated Fold & Close Sandwich (150 ct.)
2/\$3

Our Family Tall Kitchen Bags
(34 - 45 ct.) or 65% Recycled (80 ct.) or Trash Bags (20 - 28 ct.)
\$5.99

Meow Mix Cat Food
13.5 - 16 lb.
\$12.99

APOLLO

CASH IN YOUR COINS AT APOLLO WITH COIN MAX!



No Charge Money Orders up to \$1,000 No Limit

We Cash Payroll & Income Tax Checks

Market Place



ELECTRONIC WIC BENEFITS



MoneyGram
International Money Transfer



Dairy & Frozen

Imperial Spread 45 oz. **2/\$6**



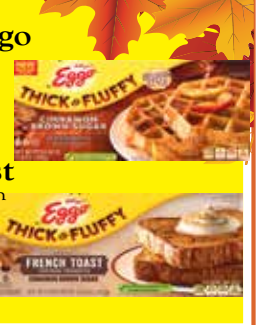
Blue Bonnet Margarine 1 lb. quarters **4/\$5**



Banquet Boneless Chicken Nuggets, Tenders, Strips or Patties (24 - 32 oz.) or Mega Meats Chicken Dinner (12.6 - 14.25 oz.) **\$3.99**



Kellogg's Eggo Thick & Fluffy Waffles or French Toast (6 ct.) or Nutri Grain Waffles (10 ct.) **\$3.99**



Our Family Cheese Singles 16 ct.; 12 oz. **2/\$5**



Florida's Natural Orange or Grapefruit Juice Not from Concentrate 52 oz. **\$3.49**



Stouffer's Family Size Entrees 28 - 40 oz. **\$7.99**



Pillsbury Toaster Strudel 11.7 oz. **2/\$5**



Dairy Fresh Bagels 5 ct. **4/\$5**



Fairlife Milk 52 oz. **\$3.99**



Totino's Pizza Rolls 25 ct. **2/\$4**



Our Family Pie Crusts 2 ct.; 10 - 12 oz. **2/\$4**



Dairy Fresh Orange Juice 1/2 Gallon **2/\$4**



Dutch Farms Cream Cheese 8 oz. box **2/\$3**



Totino's Party Pizza 9.8 - 10.9 oz. **3/\$4**



SuperPretzel Soft Pretzels (13 oz.) or SoftStix (9 oz.) **2/\$6**



Country Fresh Cottage Cheese, Sour Cream or French Onion Dip 8 oz. **4/\$5**



Our Family Original or Light Yogurt 6 oz. **2/\$1**



Country Fresh Ice Cream 4.5 quart pail **\$6.99**



Country Fresh Bars Orange Cream, Crunch, Fudge or Toffee 12 pack **3/\$10**



Beverages & Snacks

Pepsi Products 1.25 liter (plus deposit) **99¢**



Coca-Cola Products 8 pk., 12 oz. btl. (plus deposit) **2/\$11**



Ruffles Potato Chips 7.75 - 11 oz. **2/\$6**



Pepsi Products 6 pk., 16.9 oz. btl. (plus deposit) **4/\$13**



Coca-Cola Products 12 pk., 12 oz. cans (plus deposit) **\$6.99**



Cheetos or Fritos 6.5 - 9.25 oz. **2/\$6**



Kellogg's Town House or Club Crackers 5.7 - 13.8 oz. **2/\$6**



7-Up Products 12 pk., 12 oz. cans or 8 pk., 12 oz. btl. (plus deposit) **3/\$13**



Polar Seltzer 12 pk., 12 oz. cans (plus deposit) **3/\$11**



Chex Mix, Gardetto's or Bugles 6 - 8.75 oz. **3/\$5**



Keebler Cookies Chips Deluxe or Fudge Shoppe (8 - 15 oz.), Sandies (11.2 - 11.3 oz.), or Vienna Fingers (14.2 oz.) or Mother's Animal Cookies (11 oz.) **2/\$5**



Glacéau Vitaminwater (20 oz.) or Smartwater (33.8 oz.) **2/\$3**



Monster Energy Drinks 15.5 - 16 oz. (plus deposit) **2/\$4**



Nabisco Family Size Cookies or Crackers 10 - 25.6 oz. **2/\$7**



Arizona Tea Gallon **2/\$7**



Sutter Home Wine 1.5 liter bottle (plus tax) **\$7.99**



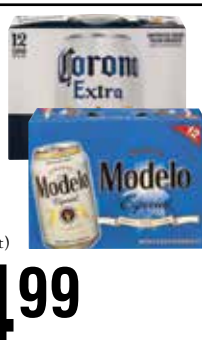
Barefoot Wine 750 ml bottle (plus tax) **\$9.99**



Carlo Rossi Wine 1.5 liter bottle (plus tax) **\$5.99**



Corona or Modelo 12 pack cans (plus tax & deposit) **\$14.99**



Budweiser or Bud Light 15 pack cans (plus tax & deposit) **\$12.99**



OUR FINEST MEATS!



Fresh
**All Beef
Hamburger**
Value Pack
\$3.49 lb.



USDA Inspected Pork
**Assorted
Pork Chops**
Family Pack
\$1.88 lb.



Jennie-O
Ground Turkey
3 lb. pkg.
\$9.99



Happy Seas
Perch Fillets
5 lb. bag
\$21.99



Fresh
Turkey Chops
\$3.99 lb.



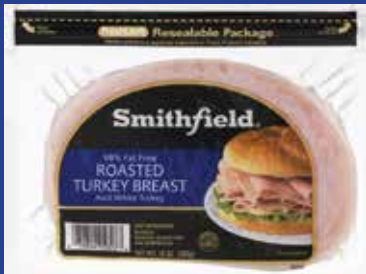
Fresh
Turkey Wings
Value Pack
\$1.69 lb.



Fresh
Ground Sirloin
\$4.99 lb.



USDA Inspected Beef
Boneless
Ribeye Steaks
Family Pack
\$8.99 lb.



Smithfield
**Turkey or Ham
Lunchmeat**
10 oz. pkg.
2/\$6



Dutch Brand
Hot Franks
3 lb. pkg.
\$8.99



Ball Park
Beef Franks
15 oz. pkg.
\$3.99



Bob Evans
Sausage Patties
30 ct., 40 oz.
\$8.99



Lake Liner
Breaded Chicken
3 lb. bag
\$6.99



Land O' Frost
**DeliShaved
Black Forest Ham**
9 oz. pkg.
5/\$10



Armour
Meatballs
64 oz. bag
\$10.99



Bar S
**Bun Size
Sausage**
40 oz. pkg.
\$4.99

FISHERMAN'S FRESH CATCH!



Happy Seas
Tilapia Fillets
5 lb. bag
\$14.99



Happy Seas
Swai Fillets
5 lb. bag
\$17.99



Happy Seas
**Catfish
Nuggets**
5 lb. bag
\$19.99



Sea Best
Shrimp
Raw or Cooked
(31-40 ct)
1 lb. bag
\$8.99

FRESH PRODUCE



open
acres
**Yellow
Onions**
2 lb. bag
3/\$5



Avocados
2/\$3



**Roma
Tomatoes**
\$1.39 lb.



Robinson
Greens
1 lb. bag
2/\$5



Bananas
69¢ lb.



Fresh Express
Salad Blends
5-12 oz.
2/\$6



**Navel
Oranges**
3 lb. bag
\$4.99



California
**Premium
Peaches**
\$1.49 lb.