

DESIGNER NATURAL SHADES



Product Pricing Guide

TABLE OF CONTENTS

Pattern Index	2~6	Price Charts	29~31
Pattern Image Index	7~14	Lining Price Chart	32
Measuring Instructions	15	Additional Information	33
Inside/Outside Mount		Services	34~36
Ceiling Mount		Ordering	
Headrail Options	16	Changes/Cancellations	
Product Specifications	17	Lead Time/Rush Orders	
Operation	18	Billing	
Shade Styles	19	Shipping/Handling	
Contour Shade™	20	Claims>Returns	
Natural Woven Drapery	21	Care/Maintenance	
Specialty Windows	22~23	Warranty	
Motorization	24~27	Order Form	
Decorative Edge/Specialty Options ..	28		

Designer Natural Shades are created from the finest natural woods and fibers which are hand woven in Asia on traditional looms by skilled weavers. The artistic hand craftsmanship of Designer Natural Shades united with elegance of modern design transports rich sentiments of nature and worldly sophistication to any room.

Designer Natural Shades are directly imported and domestically fabricated, ensuring the finest quality, most contemporary styles, and exquisite patterns. Each Designer Natural Shade window treatment is a distinctive, original work from the artists and craftsmen that create it, celebrating the grand union of nature and function.

Designer Natural Shades are a result of our full commitment to producing only the highest quality products with the most outstanding service. Our factory operates in a non-corporate fashion that allows for quick turn around time and as well as one-on-one customer service with product specialists. The quality and customer satisfaction of our products are fully guaranteed.

Pattern Index

Pattern	No.	Chart	Max.Width	Edge Banding/COM	Drapery	Side by Side
Aaya Frost	JZ310	6	144"	Yes	Yes	Yes
Aaya Snow	JZ300	6	144"	Yes	Yes	Yes
Andover Dawn	JZ111	6	144"	Yes	Yes	Yes
Andover Oyster	JZ113	6	144"	Yes	Yes	Yes
Andover Umber	JZ112	6	144"	Yes	Yes	Yes
Arendal Oyster	JB255	4	144"	Yes	Yes	Yes
Arendal Slate	JB256	4	144"	Yes	Yes	Yes
Aria Champagne	MG370	6	144"	Yes	Yes	Yes
Aria Heather	MG380	6	144"	Yes	Yes	Yes
Aria Sienna	MG390	6	144"	Yes	Yes	Yes
Aria Snow	MG360	6	144"	Yes	Yes	Yes
Aris Tea	B 7 7 0	2	96"	Yes	Yes	Yes
Aris Wheat	B 7 8 0	2	96"	Yes	Yes	Yes
Avedon	NV350	4	96"	Yes	Yes	No
Bacopa Amber	B 7 5 0	2	96"	Yes	Yes	No
Bacopa Camel	B 7 4 0	2	96"	Yes	Yes	No
Balboa Cork	LS960	2	96"	Yes	Yes	Yes
Balboa Soil	LS970	2	96"	Yes	Yes	Yes
Bartlett Eggshell	WG920	6	144"	Yes	Yes	Yes
Bartlett Latte	WG940	6	144"	Yes	Yes	Yes
Bartlett Malt	WG930	6	144"	Yes	Yes	Yes
Bartlett Oyster	WG950	6	144"	Yes	Yes	Yes
Belden Blonde	SJ330	5	144"	Yes	Yes	Yes
Belden Raven	SJ340	5	144"	Yes	Yes	Yes
Belmont Dawn	JZ301	6	144"	Yes	Yes	Yes
Belmont Oyster	JZ302	6	144"	Yes	Yes	Yes
Belmont Sage	JZ303	6	144"	Yes	Yes	Yes
Belmont Storm	JZ304	6	144"	Yes	Yes	Yes
Bengali Earth	BJ200	5	96"	Yes	Yes	Yes
Bengali Mist	BJ220	5	96"	Yes	Yes	Yes
Botswana	NV500	2	96"	Yes	Yes	No
Bowery Maple	BB650	1	96"	Yes	Yes	No
Bowery Moon	BB640	1	96"	Yes	Yes	No
Buzen Dawn	JJ402	5	144"	Yes	Yes	Yes
Buzen Dusk	JJ401	5	144"	Yes	Yes	Yes
Calgary Dawn	JZ135	6	144"	Yes	Yes	Yes
Calgary Dusk	JZ137	6	144"	Yes	Yes	Yes
Calgary Mist	JZ138	6	144"	Yes	Yes	Yes
Calgary Oyster	JZ136	6	144"	Yes	Yes	Yes
Cameroon	NV730	3	96"	Yes	Yes	No
Chalayan Sea	G 0 2 0	5	144"	Yes	Yes	Yes
Chalayan Wheat	G 0 3 0	5	144"	Yes	Yes	Yes
Cissus	T 1 8 0	3	96"	No	No	No
Claremont Dawn	JJ180	5	144"	Yes	Yes	Yes
Claremont Mist	JJ182	5	144"	Yes	Yes	Yes
Claremont Sage	JJ181	5	144"	Yes	Yes	Yes
Claremont Storm	JJ183	5	144"	Yes	Yes	Yes
Cocos	J 4 5 0	5	144"	Yes	Yes	Yes
Daisen Dawn	JZ331	6	144"	Yes	Yes	Yes

Pattern Index

Pattern	No.	Chart	Max.Width	Edge Banding/COM	Drapery	Side by Side
Daisen Snow	JZ330	6	144"	Yes	Yes	Yes
Delphi Umber	JJ541	3	96"	Yes	Yes	No
Easton Beige	JJ171	5	144"	Yes	Yes	Yes
Easton Dawn	JJ170	5	144"	Yes	Yes	Yes
Easton Dusk	JJ172	5	144"	Yes	Yes	Yes
Ferra Camel	BB122	1	96"	Yes	Yes	No
Ferra Hill	BB121	1	96"	Yes	Yes	No
Florence Dawn	JJ220	6	144"	Yes	Yes	Yes
Florence Dusk	JJ221	6	144"	Yes	Yes	Yes
Frankfurt Camel	JJ601	4	96"	Yes	Yes	Yes
Frankfurt Cocoa	JJ600	4	96"	Yes	Yes	Yes
Galine Dawn	GG720	6	144"	Yes	Yes	Yes
Galine Espresso	GG740	6	144"	Yes	Yes	Yes
Galine Moon	GG710	6	144"	Yes	Yes	Yes
Galine Sterling	GG730	6	144"	Yes	Yes	Yes
Gibson Dusk	JZ122	6	144"	Yes	Yes	Yes
Gibson Mist	JZ123	6	144"	Yes	Yes	Yes
Gibson Sage	JZ121	6	144"	Yes	Yes	Yes
Goya Dawn	M010	5	144"	Yes	Yes	Yes
Goya Dusk	M020	5	144"	Yes	Yes	Yes
Goya Wheat	M050	5	144"	Yes	Yes	Yes
Guinea Gold	NV410	2	96"	Yes	Yes	Yes
Guinea Grass	NV411	2	96"	Yes	Yes	Yes
Guinea Rouge	NV412	2	96"	Yes	Yes	Yes
Gumanti	LJ520	4	96"	No	No	No
Hampton Dawn	NV810	5	144"	Yes	Yes	Yes
Hampton Dusk	NV820	5	144"	Yes	Yes	Yes
Hampton Olive	NV830	5	144"	Yes	Yes	Yes
Hayes Cream	MM570	5	96"	Yes	Yes	Yes
Hayes Ginger	MM580	5	96"	Yes	Yes	Yes
Hayes Stone	MM590	5	96"	Yes	Yes	Yes
Hoku Mist	M150	4	96"	Yes	Yes	Yes
Hoya Beige	D860	2	96"	Yes	Yes	Yes
Hoya Camel	D870	2	96"	Yes	Yes	Yes
Hyde Ash	WS370	2	96"	Yes	Yes	No
Hyde Mushroom	WS350	2	96"	Yes	Yes	No
Hyde Sienna	WS360	2	96"	Yes	Yes	No
Ibiza Sand	JJ550	4	96"	Yes	Yes	Yes
Imari Dusk	JJ501	5	96"	Yes	Yes	Yes
Imari Umber	JJ502	5	96"	Yes	Yes	Yes
Isamu Dusk	BB202	2	96"	Yes	Yes	No
Isamu Umber	BB203	2	96"	Yes	Yes	No
Juba	J840	3	96"	Yes	Yes	No
Kahlo Mist	B830	3	96"	Yes	Yes	Yes
Kipling Dove	KX650	6	144"	Yes	Yes	Yes
Kipling Heather	KX660	6	144"	Yes	Yes	Yes
Kipling Slate	KX670	6	144"	Yes	Yes	Yes
Korsia Cocoa	JJ612	5	144"	Yes	Yes	Yes
Korsia Grove	JJ610	5	144"	Yes	Yes	Yes
Korsia Umber	JJ611	5	144"	Yes	Yes	Yes

Pattern Index

Pattern	No.	Chart	Max.Width	Edge Banding/COM	Drapery	Side by Side
Larkin Dawn	SB110	2	96"	Yes	Yes	Yes
Larkin Dusk	SB120	2	96"	Yes	Yes	Yes
Larkin Mist	SB130	2	96"	Yes	Yes	Yes
Lenox Dawn	MJ200	5	144"	Yes	Yes	Yes
Lenox Slate	MJ201	5	144"	Yes	Yes	Yes
Lexington Haze	MM680	4	96"	Yes	Yes	No
Lexington Terra	MM690	4	96"	Yes	Yes	No
Libya	NV680	3	96"	Yes	Yes	No
Liyama Eve	SB767	3	96"	Yes	Yes	Yes
Lombard Rust	MB220	3	96"	Yes	Yes	No
Lombard Sage	MB230	3	96"	Yes	Yes	No
Mali Cocoa	NV403	1	96"	Yes	Yes	Yes
Mali Grass	NV402	1	96"	Yes	Yes	Yes
Malta Camel	BP560	3	96"	Yes	Yes	No
Malta Cocoa	BP561	3	96"	Yes	Yes	No
Marbella Dawn	JJ210	6	144"	Yes	Yes	Yes
Marbella Mist	JJ212	6	144"	Yes	Yes	Yes
Marbella Oyster	JJ211	6	144"	Yes	Yes	Yes
Milan Mist	JJ230	4	144"	Yes	Yes	Yes
Milan Slate Green	JJ232	4	144"	Yes	Yes	Yes
Milan Storm	JJ231	4	144"	Yes	Yes	Yes
Miro Dawn	M100	4	96"	Yes	Yes	Yes
Miyazaki	GG701	5	144"	Yes	Yes	Yes
Mogu Snow	NV200	4	96"	Yes	Yes	Yes
Mohave Umber	J790	4	96"	Yes	Yes	No
Montgomery Bleach	MG160	6	144"	Yes	Yes	Yes
Montgomery Copper	MG180	6	144"	Yes	Yes	Yes
Montgomery Flax	MG170	6	144"	Yes	Yes	Yes
Moraga Hazel	SJ460	5	144"	Yes	Yes	Yes
Moraga Russet	SJ470	5	144"	Yes	Yes	Yes
Nairobi	LP390	3	96"	No	No	No
Omo Dune	MM890	6	144"	Yes	Yes	Yes
Omo Oyster	MM880	6	144"	Yes	Yes	Yes
Omo Pearl	MM870	6	144"	Yes	Yes	Yes
Orsay	LJ510	3	96"	No	No	No
O'tahiti Maple	B300	1	96"	Yes	Yes	Yes
O'tahiti Oak	B320	1	96"	Yes	Yes	Yes
O'tahiti White Wash	B310	1	96"	Yes	Yes	Yes
Otsuki	JW350	6	96"	No	No	No
Ozu Dawn	JW340	6	96"	No	No	No
Ozu Eve	JW341	6	96"	No	No	No
Palermo Dusk	JJ162	5	144"	Yes	Yes	Yes
Palermo Mist	JJ161	5	144"	Yes	Yes	Yes
Palermo Slate	JJ160	5	144"	Yes	Yes	Yes
Parma Stone	JL801	3	96"	No	No	No
Phoenix Dawn	BJ150	4	144"	Yes	Yes	Yes
Phoenix Mist	BJ152	4	144"	Yes	Yes	Yes
Phoenix Olive	BJ153	4	144"	Yes	Yes	Yes
Phoenix Sand	BJ151	4	144"	Yes	Yes	Yes
Portola Granite	JM990	3	96"	Yes	Yes	Yes

Pattern Index

Pattern	No.	Chart	Max.Width	Edge Banding/COM	Drapery	Side by Side
Portola Khaki	JM980	3	96"	Yes	Yes	Yes
Rattan Jute	J 2 5 0	3	96"	Yes	Yes	Yes
Rumoi Dawn	JZ360	6	144"	Yes	Yes	Yes
Rumoi Dusk	JZ361	6	144"	Yes	Yes	Yes
Sakura	BY725	5	96"	Yes	Yes	Yes
Sasarido Beige	J 8 0 0	5	144"	Yes	Yes	Yes
Sasarido Ebony	J 8 2 0	5	144"	Yes	Yes	Yes
Sasarido Umber	J 8 1 0	5	144"	Yes	Yes	Yes
Seville Beige	JJ190	5	144"	Yes	Yes	Yes
Seville Dusk	JJ193	5	144"	Yes	Yes	Yes
Seville Mist	JJ192	5	144"	Yes	Yes	Yes
Seville Sage	JJ191	5	144"	Yes	Yes	Yes
Shizen Beige	JJ102	6	144"	Yes	Yes	Yes
Shizen Dawn	JJ101	6	144"	Yes	Yes	Yes
Shizen Dusk	JJ105	6	144"	Yes	Yes	Yes
Shizen Mist	JJ104	6	144"	Yes	Yes	Yes
Sierra Leone	NV470	3	96"	Yes	Yes	No
Sloan Amber	RD230	1	96"	Yes	Yes	Yes
Sloan Frost	RD220	1	96"	Yes	Yes	Yes
Sloan Mink	RD210	1	96"	Yes	Yes	Yes
Sloan Russet	RD200	1	96"	Yes	Yes	Yes
Srilanka Beige	J 4 7 0	5	144"	Yes	Yes	Yes
Srilanka Dance	J 2 9 0	5	144"	Yes	Yes	Yes
Srilanka Dawn White	J 2 7 0	5	144"	Yes	Yes	Yes
Srilanka Dawn Yellow	J 2 7 0	5	144"	Yes	Yes	Yes
Srilanka Dusk	J 2 8 0	5	144"	Yes	Yes	Yes
Srilanka Earth	JJ310	5	144"	Yes	Yes	Yes
Srilanka Miele	JJ320	5	96"	Yes	Yes	Yes
Srilanka Mink	JJ330	5	144"	Yes	Yes	Yes
Srilanka Mist	JJ300	5	144"	Yes	Yes	Yes
Srilanka Sienna	JJ340	5	144"	Yes	Yes	Yes
Srilanka Storm	JJ350	5	144"	Yes	Yes	Yes
Steffe Sea	NV020	4	96"	Yes	Yes	Yes
Sudan	NV490	3	96"	Yes	Yes	No
Sumo Camel	JB600	3	96"	Yes	Yes	No
Sumo Cocoa	JB601	3	96"	Yes	Yes	No
Sumo Ebony	JB602	3	96"	Yes	Yes	No
Tanuka Frost	JZ380	6	144"	Yes	Yes	Yes
Tanzania	NV450	3	96"	Yes	Yes	Yes
Tiran	J 4 6 0	5	144"	Yes	Yes	Yes
Tivoli Dawn	JB250	5	144"	Yes	Yes	Yes
Tivoli Dusk	JB253	5	144"	Yes	Yes	Yes
Tivoli Olive	JB252	5	144"	Yes	Yes	Yes
Tivoli Sand	JB251	5	144"	Yes	Yes	Yes
Tokai Dawn	JZ351	6	144"	Yes	Yes	Yes
Tokai Dusk	JZ350	6	144"	Yes	Yes	Yes
Tokai Umber	JZ352	6	144"	Yes	Yes	Yes
Ukiha	JZ332	6	144"	Yes	Yes	No
Valencia Bone	JG800	6	144"	Yes	Yes	Yes
Valencia Henna	JG830	6	144"	Yes	Yes	Yes

Pattern Index

Pattern	No.	Chart	Max.Width	Edge Banding/COM	Drapery	Side by Side
Valencia Oatmeal	JG810	6	144"	Yes	Yes	Yes
Valencia Willow	JG820	6	144"	Yes	Yes	Yes
Varvatos Umber	BJ310	3	96"	No	No	No
Verona Dawn	JJ240	5	144"	Yes	Yes	Yes
Verona Oyster	JJ241	5	144"	Yes	Yes	Yes
Verona Slate	JJ242	5	144"	Yes	Yes	Yes
Verona Storm	JJ243	5	144"	Yes	Yes	Yes
Warhol Umber	BJ410	4	96"	No	No	No
Waverly Dawn	BB710	4	96"	Yes	Yes	Yes
Waverly Moon	BB700	4	96"	Yes	Yes	Yes
Waverly Night	BB730	4	96"	Yes	Yes	Yes
Waverly Sage	BB720	4	96"	Yes	Yes	Yes
Windsor Dawn	JZ141	6	144"	Yes	Yes	Yes
Windsor Malt	JZ142	6	144"	Yes	Yes	Yes
Windsor Mist	JZ143	6	144"	Yes	Yes	Yes
Yaizu Dawn	JZ370	6	144"	Yes	Yes	No
Yaizu Dusk	JZ372	6	144"	Yes	Yes	No
Yaizu Sand	JZ371	6	144"	Yes	Yes	No
Zegna Cocoa	NV300	4	96"	Yes	Yes	Yes
Zegna Grass	NV310	4	96"	Yes	Yes	Yes



Pattern Image Index



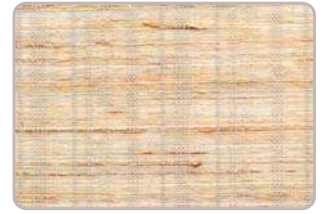
Aaya Frost JZ310



Aaya Snow JZ300



Andover Dawn JZ111



Andover Oyster JZ113



Andover Umber JZ112



Arendal Oyster JB255



Arendal Slate JB256



Aria Champagne MG370



Aria Heather MG380



Aria Sienna MG390



Aria Snow MG360



Aris Tea B770



Aris Wheat B780



Avedon NV350



Bacopa Amber B750



Bacopa Camel B740



Balboa Cork LS960



Balboa Soil LS970



Bartlett Eggshell WG920



Bartlett Latte WG940



Bartlett Malt WG930



Bartlett Oyster WG950



Belden Blonde SJ330



Belden Raven SJ340



Belmont Dawn JZ301



Belmont Oyster JZ302



Belmont Sage JZ303



Belmont Storm JZ304

Pattern Image Index



Bengali Earth BJ200



Bengali Mist BJ220



Botswana NV500



Bowery Maple BB650



Bowery Moon BB640



Buzen Dawn JJ402



Buzen Dusk JJ401



Calgary Dawn JZ135



Calgary Dusk JZ137



Calgary Mist JZ138



Calgary Oyster JZ136



Cameroon NV730



Chalayan Sea G020



Chalayan Wheat G030



Cissus T180



Claremont Dawn JJ180



Claremont Mist JJ182



Claremont Sage JJ181



Claremont Storm JJ183



Cocos J450



Daisen Dawn JZ331



Daisen Snow JZ330



Delphi Umber JJ541



Easton Beige JJ171



Easton Dawn JJ170



Easton Dusk JJ172



Ferra Camel BB122



Ferra Hill BB121

Pattern Image Index



Florence Dawn JJ220



Florence Dusk JJ221



Frankfurt Camel JJ601



Frankfurt Cocoa JJ600



Galine Dawn GG720



Galine Espresso GG740



Galine Moon GG710



Galine Sterling GG730



Gibson Dusk JZ122



Gibson Mist JZ123



Gibson Sage JZ121



Goya Dawn M010



Goya Dusk M020



Goya Wheat M050



Guinea Gold NV410



Guinea Grass NV411



Guinea Rouge NV412



Gumanti LJ520



Hampton Dawn NV810



Hampton Dusk NV820



Hampton Olive NV830



Hayes Cream MM570



Hayes Ginger MM580



Hayes Stone MM590



Hoku Mist M150



Hoya Beige D860

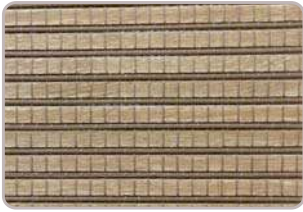


Hoya Camel D870



Hyde Ash WS370

Pattern Image Index



Hyde Mushroom WS350



Hyde Sienna WS360



Ibiza Sand JJ550



Imari Dusk JJ501



Imari Umber JJ502



Isamu Dusk BB202



Isamu Umber BB203



Juba J840



Kahlo Mist B830



Kipling Dove KX650



Kipling Heather KX660



Kipling Slate KX670



Korsia Cocoa JJ612



Korsia Grove JJ610



Korsia Umber JJ611



Larkin Dawn SB110



Larkin Dusk SB120



Larkin Mist SB130



Lenox Dawn MJ200



Lenox Slate MJ201



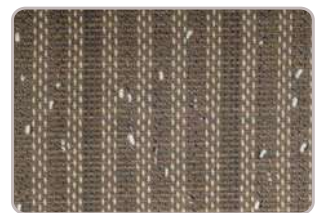
Lexington Haze MM680



Lexington Terra MM690



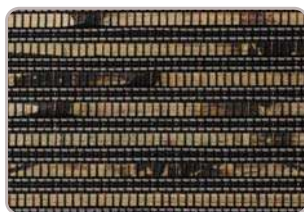
Libya NV680



Liyama Eve SB767



Lombard Rust MB220



Lombard Sage MB230



Mali Cocoa NV403



Mali Grass NV402

Pattern Image Index



Malta Camel BP560



Malta Cocoa BP561



Marbella Dawn JJ210



Marbella Mist JJ212



Marbella Oyster JJ211



Milan Mist JJ230



Milan Slate Green JJ232



Milan Storm JJ231



Miro Dawn M100



Miyazaki GG701



Mogu Snow NV200



Mohave Umber J790



Montgomery Bleach MG160



Montgomery Copper MG180



Montgomery Flax MG170



Moraga Hazel SJ460



Moraga Russet SJ470



Nairobi LP390



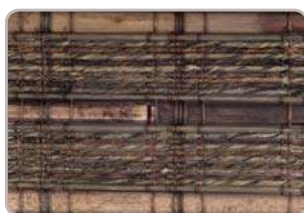
Omo Dune MM890



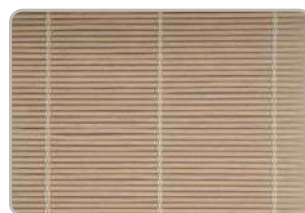
Omo Oyster MM880



Omo Pearl MM870



Orsay LJ510



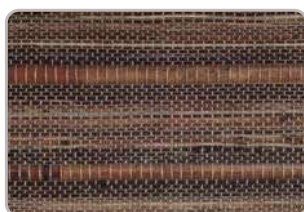
O'tahiti Maple B300



O'tahiti Oak B320



O'tahiti White Wash B310



Otsuki JW350



Ozu Dawn JW340



Ozu Eve JW341

Pattern Image Index



Palermo Dusk JJ162



Palermo Mist JJ161



Palermo Slate JJ160



Parma Stone JL801



Phoenix Dawn BJ150



Phoenix Mist BJ152



Phoenix Olive BJ153



Phoenix Sand BJ151



Portola Granite JM990



Portola Khaki JM980



Rumoi Dawn JZ360



Rattan Jute J250



Rumoi Dusk JZ361



Sakura BY725



Sasarido Beige J800



Sasarido Ebony J820



Sasarido Umber J810



Seville Beige JJ190



Seville Dusk JJ193



Seville Mist JJ192



Seville Sage JJ191



Shizen Beige JJ102



Shizen Dawn JJ101



Shizen Dusk JJ105



Shizen Mist JJ104



Sierra Leone NV470



Sloan Amber RD230



Sloan Frost RD220

Pattern Image Index



Sloan Mink RD210



Sloan Russet RD200



Srilanka Beige J470



Srilanka Dance J290



Srilanka Dawn White J270



Srilanka Dawn Yellow J270



Srilanka Dusk J280



Srilanka Earth JJ310



Srilanka Miele JJ320



Srilanka Mink JJ330



Srilanka Mist JJ300



Srilanka Sienna JJ340



Srilanka Storm JJ350



Steffe Sea NV020



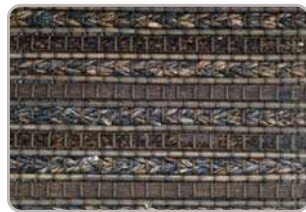
Sudan NV490



Sumo Camel JB600



Sumo Cocoa JB601



Sumo Ebony JB602



Tanuka Frost JZ380



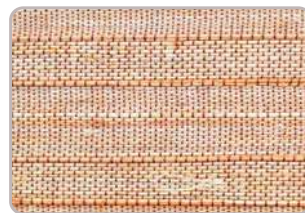
Tanzania NV450



Tiran J460



Tivoli Dawn JB250



Tivoli Dusk JB253



Tivoli Olive JB252



Tivoli Sand JB251



Tokai Dawn JZ351



Tokai Dusk JZ350



Tokai Umber JZ352

Pattern Image Index



Ukiha JZ332



Valencia Bone JG800



Valencia Henna JG830



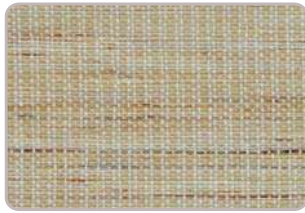
Valencia Oatmeal JG810



Valencia Willow JG820



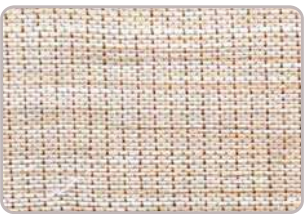
Varvatos Umber BJ310



Verona Dawn JJ240



Verona Oyster JJ241



Verona Slate JJ242



Verona Storm JJ243



Warhol Umber BJ410



Waverly Dawn BB710



Waverly Moon BB700



Waverly Night BB730



Waverly Sage BB720



Windsor Dawn JZ141



Windsor Malt JZ142



Windsor Mist JZ143



Yaizu Dawn JZ370



Yaizu Dusk JZ372



Yaizu Sand JZ371



Zegna Cocoa NV300

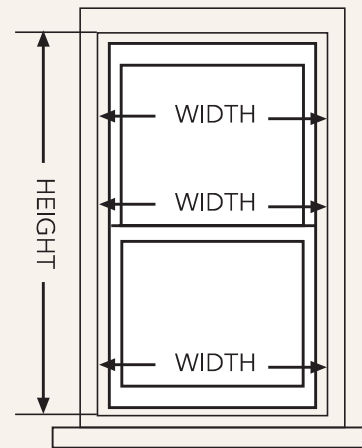


Zegna Grass NV310

Measuring Instructions

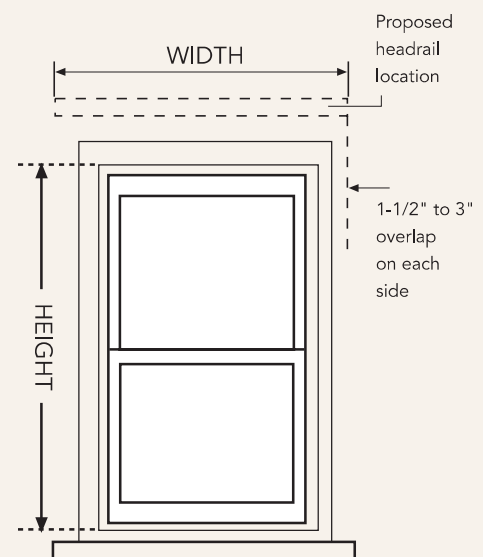
Inside Mount

- Measure width across at inside top, middle, and bottom. Use the narrowest measurement for ordering.
- The factory will take a 1/2" deduction (1/4" from each side) for operating clearance unless instructed otherwise.
- Measure height at inside top to bottom. No deductions are taken from length measurements.
- **Note:**
Finished shade length may not be exactly as specified if exact dimension falls in the middle of a wide slat. Length tolerance of ± 1 ".
- ** No bracket provided for IM, will included 2" screw for installation.*



Outside Mount

- Measure exact finished width of shade. It is recommended that 3" be added to shade width for standard overlap.
- Measure exact finished length of shade. It is recommended that 1"~1 1/2" be added to the length for standard shade.
- No deductions are taken for outside mount measurements.
- Side returns are not included.
- **Note:**
Finished shade length may not be exactly as specified if exact dimension falls in the middle of a wide slat. Length tolerance of ± 1 ".
- **Note:**
Valance width is equal to shade width.



Ceiling Mount

- Indicate whether inside or outside mount and refer to above instructions.
- **Note:**
Please use metal tape measure for all measurements Round all measurements to the nearest 1/8".

Headrail Options

Headrail sizes

Headrails are available in the following depths:

- 3/4" x 1 1/2" (does not come with installation brackets, turned headrail)
- 1 1/2" (standard feature)
- 2 1/2"
- 3/4" X 3/4" (\$10 net)

For an additional net surcharge, wider headrails are available (3 1/2", 5 1/2", and all custom sizes up to 5 1/2")

(Wider headrails come with standard installation brackets).

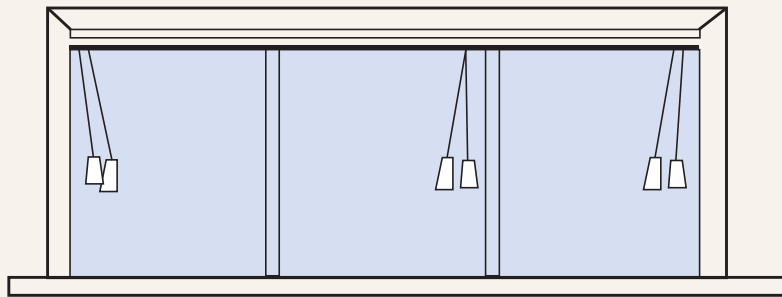
Headrail Size	Up to 48" Wide	Up to 96" Wide	Up to 122" Wide	Up to 144" Wide
Custom Size	NET\$ 5.00	NET\$ 10.00	NET\$ 15.00	NET \$20.00

Custom sizes: Please contact your factory representative.

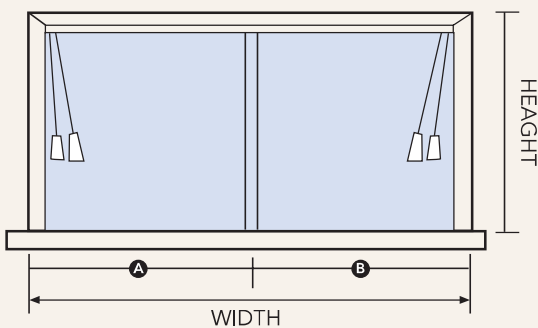
Multiple Shades on Headrail

Two or more shades can be mounted on one headrail for an additional surcharge.

Strongly recommended for sliding doors.



3 on 1 Headrail



2 on 1 Headrail

- Measure overall width of area to be covered.
- Measure width of the area shade is to cover, from left to right.
- Factory will allow a minimum of 1/2" between shades for operating clearance.
- Total width of all shades must equal total headrail width.
- Measure length using standard IM/OM measuring procedures.
- For patio doors, measure length to within 1" of the floor from top of shade.
- Cords should be on outside edges of shades.
- Wall installation is recommended.

Product Specifications

Standard Features

	Roman Fold	Old Style	Roll-Ease	Duo-Fold	Hobble	Contour	Battery Motor /Sonesse 30	Hard Wire Motor
Headrail Type	Wood	Wood	Wood	Wood	Wood	Wood	Wood	Wood
Headrail Size(Approx.)	1-1/2"x3/4"	1-1/2"x3/4"	2-1/2"x3/4"	1-1/2"x3/4"	1-1/2"x3/4"	1-1/2"x3/4"	1-1/2"x3/4"	3-1/2"x3/4"
Swivel Cord Lock & Guided Pulley	YES	YES	NO	YES	YES	YES	NO	NO
Color Coordinated Wooden Tassel	YES	YES	NO	YES	YES	YES	NO	NO
Color Coordinated Cord	YES	YES	NO	YES	YES	YES	NO	NO
Cord Loop or Metal Bead Chain	YES	YES	YES	NO	YES	NO	NO	NO
Control Positions	L or R	L or R	L or R	L or R	L or R	L or R	L or R	L or R
Warranty	YES	YES	YES	YES	YES	YES	YES	YES

Size Limitations	Roman Fold	Old Style	Roll-Ease	Duo-Fold	Hobble	Contour	Battery Motor /Sonesse 30	Hard Wire Motor
Min Width	10"	10"	20"	10"	10"	10"	20"	31 1/2"
Max Width	96"	96"	144"	72"	96"	96"	144"	144"
Min Height	24"	24"	26"	24"	24"	24"	26"	26"
Valance Standard	6"	N/A	6"	4"IM/6"OM	6"	6"	6"	8"

Roll-Ease™ Cord Lengths

	Cord Lengths
Cord Loop	Up to 72" long
Metal bead chain	any length

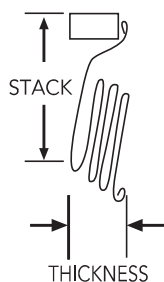
* In 12" increments, starting from 24".

* Available in silver and bronze.

* A cord loop of approximately 2/3 of the shade height will be used unless otherwise specified.

Stacking Dimensions

Roman Fold



Drops To	Stacks* To	Motorization To
36"		
48"	8"	10"
60"))
72"		
84"		
96"	10"	11"
108"		
120"		
132"		
144"		

1. All shades pulled-up stack to an average of 8"~10" height.

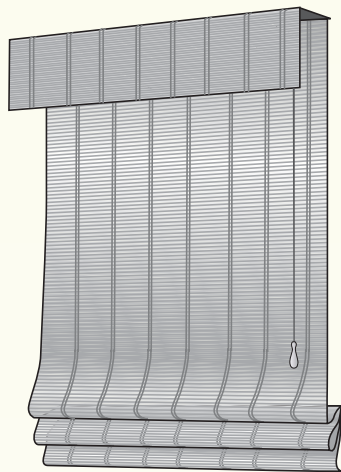
2. Thickness of stack varies with different material weave.

3. Please contact your factory representative for exact stacking height and thickness.

* Stacking averages: Actual height may vary approx. +/-1".

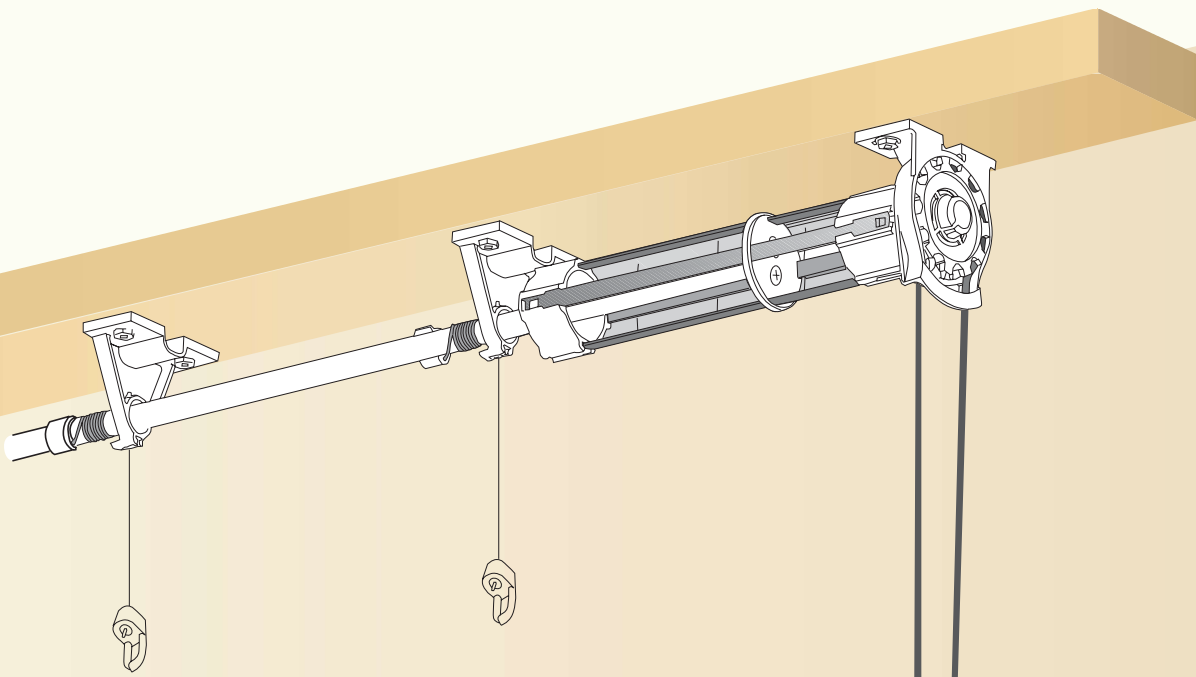
Operation

Cord Lock Operating System



- Manual locking system that secures shade at any height.
- This is a standard feature.
- Cord cleats offered in clear, bronze, and white upon request.

Roll-Ease™ Operation System

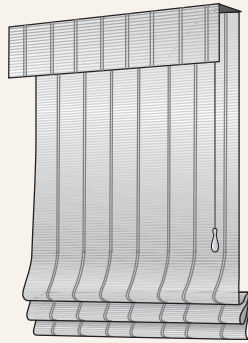


- Innovative clutch technology provides dependable performance and stylish appearance.
- Lifts shades up to 30 lbs with ease-heavy shades feel lighter.
- Prevents shades from raising and lowering unevenly.
- Adjacent shades can be precisely set to matching heights.
- Eliminates unsightly cleats and dangling cords.

Options: Available in 1 1/2" and 2 1/2" (standard) width headrails.
Cord colors (standard):white, camel, brown, black.
Metal Bead Chain (optional):silver, bronze.

Note: Metal chain is subject to stain and rust.

Shade Styles



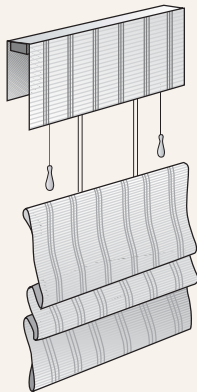
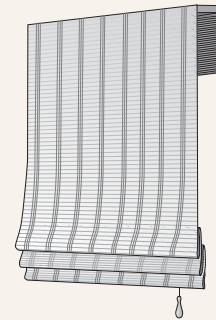
Roman Fold (standard)

- Mounted on a 1-1/2" x 3/4" wood headrail.
- Standard shade price includes 6" valance and mounting hardware.

Old Style (no charge option)

- Mounted on a 1-1/2" x 3/4" wood headrail.
- Standard shade price includes mounting hardware.
- This style has no front valance.
- Controls are hidden behind shade.

Note: Inside mount hardware is concealed by a back valance.

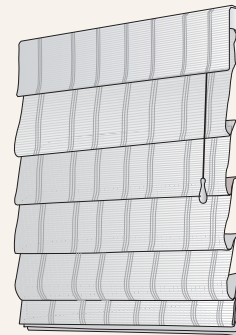


Duo-Fold (Roman Style only, additional charge)

- Mounted on a 1-1/2" x 3/4" wood headrail.
- Standard shade price includes:
 - For IM: 4" valance (\$10.00 net surcharge for double valances)
 - For OM: 6" valance
- Price as standard shade, then add the "Duo-Fold surcharge".
- Roll-Ease available.

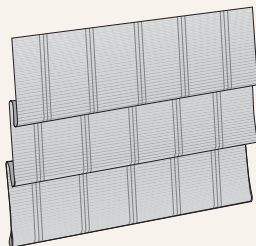
Hobble Shade (additional charge)

- Mounted on a 1-1/2" x 3/4" wood headrail.
- Standard shade price includes 6" valance and mounting hardware.
- Hobble Shade retains Roman Style Pleats even when in lowered position.
- Use Price Charts 1-6 and add 50%.
- Roman or Old Style.
- Roll-Ease available.



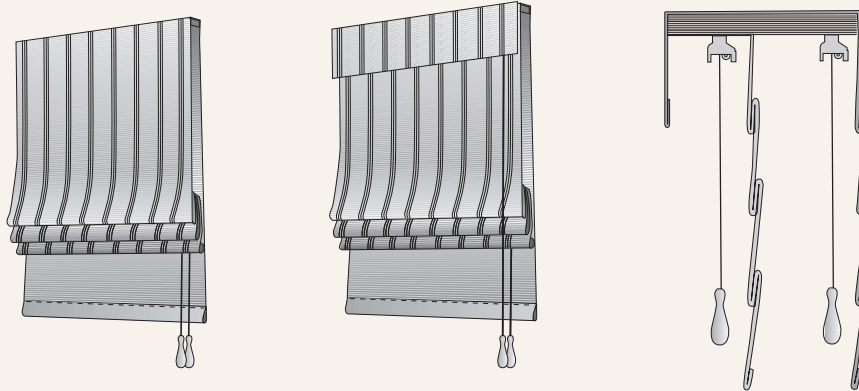
Hobble Valance (additional charge)

- Please provide sketch with measurements.
- Indicate number of folds desired.



Contour Shade™

We are delighted to present our brand new Contour Shade™ option. This option combines style and function, offering the beauty of an unlined shade and the privacy of a liner when needed. This function is available in both Roman Style and Old Style shades in all patterns and all lining options to accommodate every decorating need. The advantages the Contour Shade™ option has for you and your customers are limitless!



- Enjoy the view and light filtering properties of natural woven shades.
- Take pleasure in the option of a retractable liner to give your decor another look and add privacy when desired.
- The Contour Shade™ can be fitted on 1 1/2" Headrails to accommodate hard-to-fit window frames.
- Benefit from quick turnaround without compromising quality.

Options

	1 1/2" HR w/Cord Locks	2 1/2" HR w/one Roll Ease™	3 1/2" HR w/two Roll Ease™
Roman Style	YES	YES	YES**
Old Style	YES	YES*#	YES**
Hobble Style	N/A	N/A	N/A
Duo-Fold Style	N/A	N/A	N/A

- * Will be made with one Roll Ease™ and one cord lock.
- ** Will be made with two Roll Ease™.
- # Can be made with two Roll Ease™ on opposite sides.
- Contour Shade™ is not recommend for French doors.
- Contour Shade™ lining will have 1/4" deductions on each side.
- Contour Shade™ and lining will come with controls on the same side as a standard.

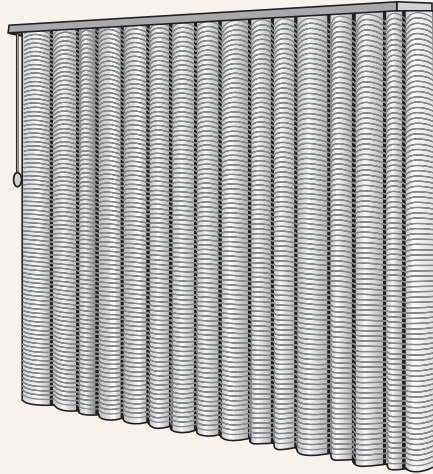
Pricing

- Pricing the Contour Shade™ is simple, just add 20% to the retail price and lining price.
- Example: For a shade that is in Chart 1 that measures 24" x 36" you will do the following:
 $\$213 \text{ retail price} + \$120 \text{ standard lining price} = \$333 \times 1.2 \text{ (adds the 20\%)} = \399.60

Contour lining only

For lining only add 20% to the lining price and a \$30 net surcharge.

Natural Woven Drapery



Product Features

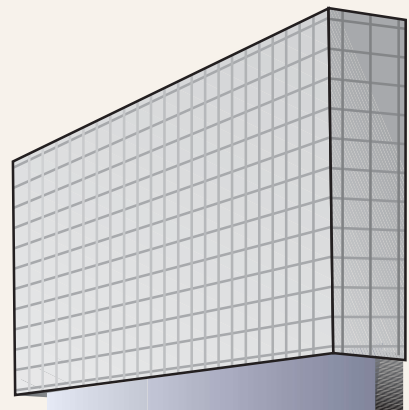
- This versatile treatment can be mounted in or above a window as a drapery, or mounted to the ceiling as a room divider.
- Strong, lightweight aluminum track system (1 7/8"W X 3/4"H). White color.
- Baton wand or cord operation. Available in pairs (Center split) or one way draw (stack left or right).
- Constructed with 100% additional material fullness.
- Maximum width 144", Maximum length is limited to the maximum material width (as shade material runs vertically).
- Includes valance or cornice box.

Measuring

- OM: Add 2" to window height. Consult your factory representative for addition to width (stack will depend on drapery size and material).
- IM: Give exact dimensions of window opening. The factory will deduct 1/2" from the total drapery width. No deductions are taken from length.

Drapery Valance or Cornice Box Only

- All draperies comes standard with your choice of :
- 6" valance (returns included) or cornice box.
- Material on cornice box runs vertically like drapery.
- Both treatments will be on a 5 1/2" headrail.



Pictured above is a Cornice Box

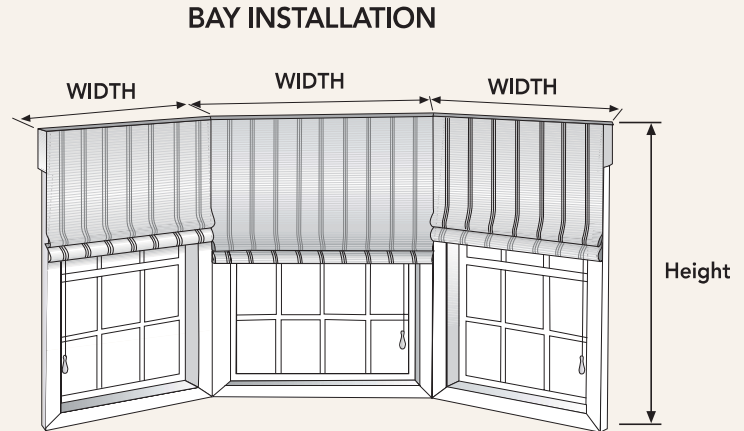
Notes:

- All draperies will be charged an \$150.00 net shipping fee unless will call.

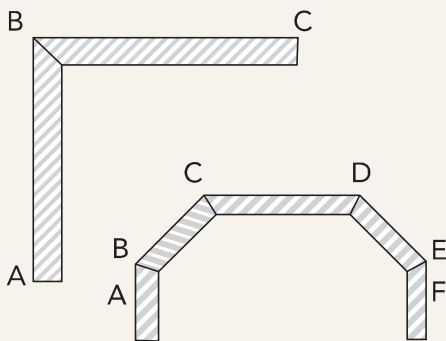
Specialty Windows

Corner and Bay Windows

- Provide sketch with angle measurements and back wall measurements.
- **Optional mitered headrail:**
Net surcharge of \$15.00 per mitered end.
Must specify degree of miter cut when placing order.



HOW TO MEASURE



OUTSIDE MOUNT – BAYS AND CORNERS

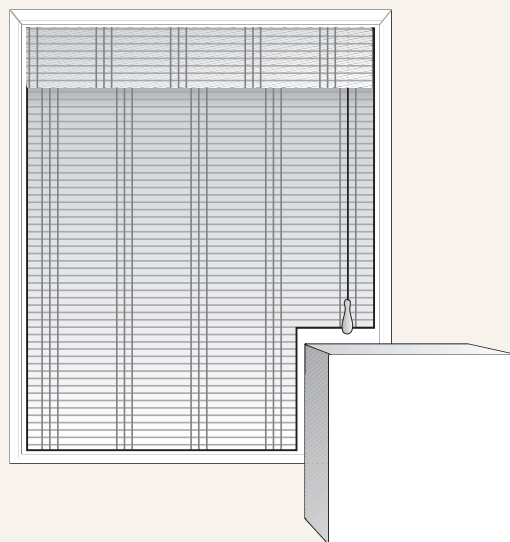
Determine width dimension for each shade. Measure from the corner out to a point 1/2" (for overlap) beyond the casing. If no window frame, measure to a point 1 1/2" beyond window opening. Provide a sketch giving dimensions A to B, B to C, etc.

INSIDE MOUNT – BAYS AND CORNERS

Minimal allowances will be taken for up/down operation only. Note: Allowance for both OM and IM do not accommodate for the stack.

Tile Cut Outs (surcharge)

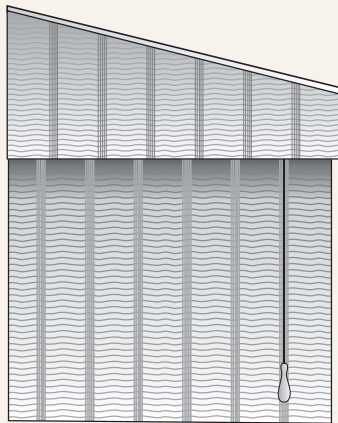
- Provide sketch with exact measurements "in" and "up".
- Net surcharge: \$10 per cut.



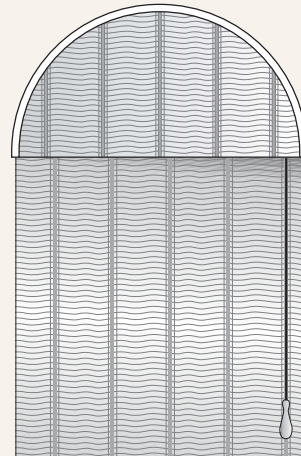
Specialty Windows

Arch and Slant Top Windows (surcharge)

- Please provide template with exact measurements.
 - Arch top maximum width: 72"
 - Slant top maximum width: 72"
- Additional surcharge for oversize measurements.
- Gimp trim on top of valance.
- **Net Surcharge: \$150.00 (labor) per shade.**
- Shipping for Arch/Slant Top window that are greater than 48" wide will incur an oversized shipping charge of \$150.00



Slant top shade



Arch top shade

Side Returns

- Recommended for outside mount shades.
- The length of returns matches length of valance which is 6" long unless otherwise specified.
- The width of returns will be 1/2" wider for 1 1/2" and 2 1/2" headrail.
- Other size available upon requested.

Price:

\$30.00 per pair

Commercial Flame Retardancy Treatment

- Meet NFPA Class A and UBC Class I requirements.
- \$3.50 per sq.ft. (net) with a minimum order of \$250.00
- \$25.00 net certified certificate.
- Price subject to change.

Motorization

Window Covering Motorization

We are proud to offer motorized window coverings powered by Somfy. With a touch of a button shades will raise or lower providing the perfect solution for operating shades in hard-to-reach places, high windows or large applications. Additionally motorized window coverings protect furnishings, manage glare and reduce energy costs.... effortlessly.

All motors feature Radio Technology Somfy® (RTS). With no line of sight required, your customers can control their automated shades from anywhere; there's no need to point and shoot the remote.

RTS has a range of 65 feet through 2 concrete walls and allows your customers to mix and match different control options, so your customer can use either the Telis hand-held remote, the DecoFlex WireFree™ RTS Switch, the Telis1 Chronis timer, or all three. Another benefit of RTS is the ability to control automated window coverings individually or as a group.

Roll Up WireFree™ Motor - Battery Motor

The Roll Up WireFree motor offers the functionality of motorized window covering and eliminates the wires because it is battery powered.



- Offers both individual and group control.
- Motor is concealed within the headrail, preserving the attractive style of window treatments.
- Includes reloadable battery wand with NiCad batteries. We recommend switching to lithium ion batteries to extend battery life.

Specifications	
Headrail Size	1 1/2"
Minimum Size	20"
Maximum Weight Limit	12 Lbs
Net Pricing	
Battery Motor (Roll Up WireFree R28 RTS)	\$300
12 Volt DC Plug-in Transformer with 25ft cable (optional)	\$60

* All sizes or approximate and vary depending on tube characteristics and shade materials.



Motorization

Sonesse® 40 Motor

The Sonesse 40 range is Somfy's quiet motor offer designed to motorize our woven shades. The brake, rotor, gearbox and accessories are all specially designed to absorb sources of noise. This 120V AC motor can be hardwired or plug into a standard wall. The RTS version is compatible with Somfy's full range of controls and accessories.

- Offers both individual and group control.
- Ultra quiet operation at only 44 dba.
120AC motor can be hardwired or plug into a standard wall.
- Comes with 11.5' cable

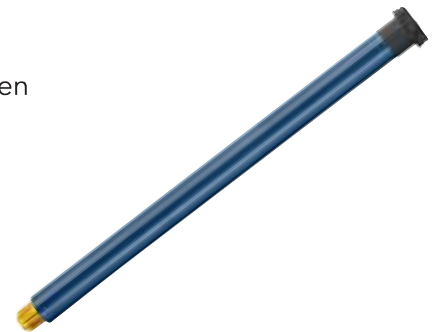


Specifications	
Headrail Size	3 1/2"
Minimum Size	28"
Net Pricing	
Sonesse 40 RTS Motor	\$550

Sonesse® 50 Motor (506S2 RTS)

The Sonesse 50 motor automates both small and large woven shades. It can be wired or plugged-in depending on the installation requirements.

- Offers both individual and group control.
- Comes with interchangeable cables for plug-in and hardwire options.



Specifications	
Headrail Size™	3 1/2"
Minimum Size™	31 1/2"
Net Pricing	
Sonesse 50 Motor (ST-50)	\$474



Motorization

Sonesse® 30 Motor

Sonesse 30 is a plug-in low voltage motor that provides quiet operation for our woven shades. The motors are engineered with superior noise reduction technology and are barely heard from a distance of 4 feet. The compact, low-profile Sonesse 30 motors are designed to fit on 1 1/2" headrails and are easily concealed between the fabrics.

- Offers both individual and group control.
- Quiet operation at only 44 dba.
- Comes with 7.5' cable
- Requires plug-in transformer or Power Control Distribution Panel



Specifications	
Headrail Size	1 1/2"
Minimum Size	18"
Maximum Weight Limit	20 Lbs
Net Pricing	
Sonesse 30 RTS	\$495
1 Motor 24V DC Plug-in Transformer 1.66Amps	\$47



Motorization

Motor Accessories

All RTS accessories are fully compatible with our motors.

Telis 1 channel remote	\$58
Telis 5 channel remote	\$79
Telis 16 channel remote	\$250
DecoFlex 1 channel wall switch	\$148
DecoFlex 5 channel wall switch	\$158
Universal RTS Interface (URTSI)	\$437

Telis Remotes



DecoFlex WireFree™ RTS Switch



Universal RTS® Interface (URTSI)



The URTSI is an integration device that allows for wireless third party control of Radio Technology Somfy® (RTS) motorized applications. The URTSI can control up to 16 RTS channels individually and/or as a group through RS232, RS485 and IR. Multiple URTSIs can be cascaded to allow for control of up to 256 channels, using the data pass through port, which also ensures optimal performance of the RTS signal. Its simple design allows you to quickly duplicate programming from existing RTS transmitters and easily locate it within the space without a need for line of sight to the motorized window coverings.

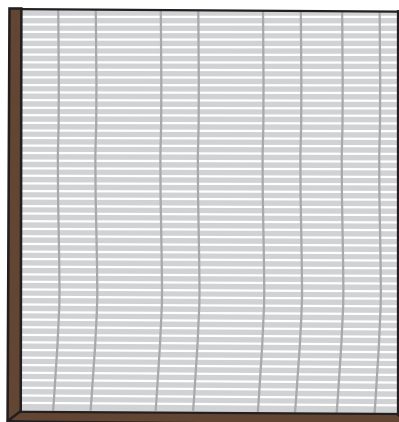
NOTE: Grandesign is not responsible for any programming or home technology integration.



Decorative Edge Options

Flat Edge Trim Style

- Trim attached at edges on front of shade.
- Trim placement choices:
 - Shade Edges, Shade Hem,
 - Valance Edges, Valance Hem
- Trim size: 1 1/4"
- 100% Cotton 1 1/4" solid twill edge binding.

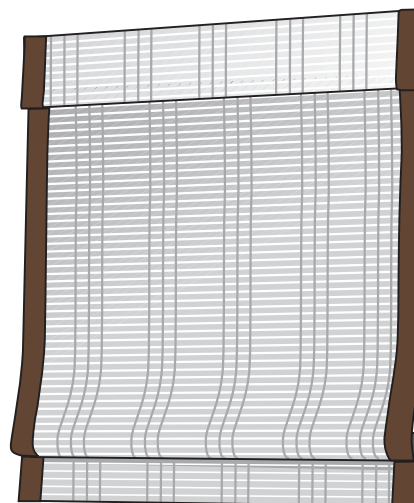


Net Surcharge:

- \$95.00 per shade.
- \$142.50 per shade over 70" (width or length).
- \$35.00 bottom hem only up to 70" wide.
- \$65.00 bottom hem only over 70" wide.

COM Folded Edge Banding Style

- Banding folded over and stitched to cover front and back edges.
- Banding placement choices:
 - Shade Edges, Valance Edges, Shade Hem.
- Banding Size: 2 1/2"
- Customer's Own Material (COM) only.



Net Surcharge:

- \$65.00 per shade for bottom only up to 70" wide.
- \$100.00 per shade for bottom only over 70" wide.
- \$135.00 per shade (2 Sides under 70" width or length).
- \$202.50 per shade (2 Sides over 70" width or length).
- \$202.50 per shade (3 sides under 70" width or length).
- \$270.00 per shade (3 Sides over 70" width or length).

Specialty Options

Hand sewn rings

- Available for net \$20.00 per shade.

Wrap Headrail

- Available for net \$15.00 per shade.
- Does not include returns.

Seam Fabric

- Available for net \$30.00 per seam under 70" long.
- Available for net \$55.00 per seam over 70" long.

Dust Cover

- Available for net \$10.00 per shade.

Headrail Sizes

- Longer heights than 108" are available for shades. Add the "Each Add 6" in Height" surcharge for each additional 6".
- All shades (except Old – Style Roman) come with a 6" valance. Use the "6" Valance Only on Headrail" charge if you want a separate valance without any shade.
- Valances are available longer than 6". Add the "6" Valance Only on Headrail" surcharge for each additional 6".
- Add the "Roll-Ease Surcharge" to the base price of the shade to add Roll-Ease control options.
- Add the "Duo-Fold Surcharge" to the base price of the shade to add Duo-Fold option.
(inside mount shades net surcharge of \$10.00 per shade for back valance)

Option Surcharges

Valance Returns	\$30.00 per pair
2 on 1 Headrail *	\$100.00
3 on 1 Headrail *	\$130.00

* For multiple shades on one headrail, price each shade individually. Give total and individual widths.
The factory will allow ½" between shades. Some patterns cannot be side by side.

CHART 1

		WIDTH											
		10" ~ 24"	24 1/8" ~ 36"	36 1/8" ~ 48"	48 1/8" ~ 60"	60 1/8" ~ 72"	72 1/8" ~ 84"	84 1/8" ~ 96"	96 1/8" ~ 108"	108 1/8" ~ 120"	120 1/8" ~ 132"	132 1/8" ~ 144"	132 1/8" ~ 144"
↑ H E I G H T ↓	UP TO 36"	234	327	380	436	570	624	679	747	821	903	993	
	36 1/8" ~ 42"	249	354	417	479	624	682	746	820	902	992	1092	
	42 1/8" ~ 48"	276	380	450	521	679	746	818	901	990	1090	1198	
	48 1/8" ~ 54"	296	409	487	565	729	809	887	976	1074	1181	1299	
	54 1/8" ~ 60"	310	436	521	609	784	873	953	1048	1153	1268	1395	
	60 1/8" ~ 66"	327	463	557	651	835	931	1027	1130	1242	1367	1504	
	66 1/8" ~ 72"	343	487	591	697	887	994	1098	1208	1328	1461	1607	
	72 1/8" ~ 78"	356	512	625	739	939	1055	1168	1285	1414	1555	1711	
	78 1/8" ~ 84"	375	537	661	785	994	1117	1239	1363	1499	1649	1814	
	84 1/8" ~ 90"	391	565	697	829	1042	1176	1306	1437	1581	1738	1913	
90 1/8" ~ 96"	408	591	734	876	1098	1239	1378	1516	1668	1834	2017		
96 1/8" ~ 108"	440	651	804	972	1207	1363	1520	1672	1840	2024	2225		
Each Add 6" in Height (1)		35	58	69	75	98	110	128	140	154	169	186	
Duo-Fold/Roll-Ease Surcharge (2)		132	157	177	190	201	210	220	242	266	294	321	
6" Valance Only on Headrail (3)		46	62	75	97	111	125	140	154	169	186	205	

* 2 on 1 headrail recommended

CHART 2

		WIDTH											
		10" ~ 24"	24 1/8" ~ 36"	36 1/8" ~ 48"	48 1/8" ~ 60"	60 1/8" ~ 72"	72 1/8" ~ 84"	84 1/8" ~ 96"	96 1/8" ~ 108"	108 1/8" ~ 120"	120 1/8" ~ 132"	132 1/8" ~ 144"	132 1/8" ~ 144"
↑ H E I G H T ↓	UP TO 36"	255	389	463	530	686	763	835	919	1010	1112	1223	
	36 1/8" ~ 42"	287	422	506	593	763	848	931	1024	1126	1239	1363	
	42 1/8" ~ 48"	315	463	557	651	835	931	1027	1130	1242	1367	1504	
	48 1/8" ~ 54"	352	496	607	714	905	1015	1124	1236	1361	1496	1647	
	54 1/8" ~ 60"	371	530	651	773	980	1102	1220	1342	1476	1625	1786	
	60 1/8" ~ 66"	392	568	700	833	1052	1184	1319	1451	1596	1756	1932	
	66 1/8" ~ 72"	411	607	748	895	1124	1271	1415	1557	1713	1883	2071	
	72 1/8" ~ 78"	436	641	799	952	1197	1355	1510	1660	1827	2010	2210	
	78 1/8" ~ 84"	459	679	848	1015	1271	1438	1610	1772	1949	2143	2358	
	84 1/8" ~ 90"	464	714	895	1073	1340	1522	1703	1873	2061	2267	2494	
90 1/8" ~ 96"	499	748	944	1139	1415	1610	1801	1981	2179	2397	2637		
96 1/8" ~ 108"	536	815	1038	1267	1563	1784	1997	2196	2411	2658	2923		
Each Add 6" in Height (1)		41	64	75	81	105	116	133	147	161	177	195	
Duo-Fold/Roll-Ease Surcharge (2)		132	157	177	190	201	210	220	242	266	294	321	
6" Valance Only on Headrail (3)		48	64	79	101	116	131	145	160	175	193	212	

* 2 on 1 headrail recommended

Price Charts

CHART 3

		←----- WIDTH -----→						-----→					
		10" ~ 24"	24 1/8" ~ 36"	36 1/8" ~ 48"	48 1/8" ~ 60"	60 1/8" ~ 72"	72 1/8" ~ 84"	84 1/8" ~ 96"	96 1/8" ~ 108"	108 1/8" ~ 120"	120 1/8" ~ 132"	132 1/8" ~ 144"	132 1/8" ~ 144"
↑ H E I G H T ↓	UP TO 36"	318	455	549	639	818	912	1001	1101	1211	1332	1465	
	36 1/8" ~ 42"	339	503	609	712	912	1014	1122	1235	1357	1494	1643	
	42 1/8" ~ 48"	371	549	667	788	1001	1122	1241	1365	1502	1651	1816	
	48 1/8" ~ 54"	414	591	728	862	1090	1225	1364	1499	1650	1816	1997	
	54 1/8" ~ 60"	436	639	788	938	1184	1331	1480	1628	1791	1969	2167	
	60 1/8" ~ 66"	462	682	847	1011	1271	1439	1601	1760	1936	2131	2343	
	66 1/8" ~ 72"	493	728	908	1087	1364	1541	1723	1895	2085	2292	2521	
	72 1/8" ~ 78"	519	772	969	1164	1447	1646	1840	2025	2228	2450	2694	
	78 1/8" ~ 84"	548	815	1025	1240	1541	1753	1959	2155	2371	2607	2869	
	84 1/8" ~ 90"	578	862	1087	1311	1630	1857	2081	2290	2519	2771	3048	
90 1/8" ~ 96"	600	908	1146	1389	1723	1959	2199	2419	2660	2926	3220		
96 1/8" ~ 108"	651	991	1262	1540	1902	2170	2427	2670	2937	3231	3553		
Each Add 6" in Height (1)		47	72	83	89	112	124	142	156	172	189	208	
Duo-Fold/Roll-Ease Surcharge (2)		132	157	177	190	201	210	220	242	266	294	321	
6" Valance Only on Headrail (3)		52	67	84	107	123	139	154	169	186	205	224	

* 2 on 1 headrail recommended

CHART 4

		←----- WIDTH -----→						-----→					
		10" ~ 24"	24 1/8" ~ 36"	36 1/8" ~ 48"	48 1/8" ~ 60"	60 1/8" ~ 72"	72 1/8" ~ 84"	84 1/8" ~ 96"	96 1/8" ~ 108"	108 1/8" ~ 120"	120 1/8" ~ 132"	132 1/8" ~ 144"	132 1/8" ~ 144"
↑ H E I G H T ↓	UP TO 36"	333	477	585	695	892	994	1109	1220	1341	1475	1623	
	36 1/8" ~ 42"	355	528	649	776	994	1106	1242	1366	1504	1653	1818	
	42 1/8" ~ 48"	389	576	712	859	1091	1224	1373	1510	1662	1827	2011	
	48 1/8" ~ 54"	436	619	777	941	1291	1337	1509	1661	1826	2009	2210	
	54 1/8" ~ 60"	465	680	839	1023	1307	1450	1637	1801	1981	2179	2396	
	60 1/8" ~ 66"	504	744	924	1102	1385	1568	1771	1948	2142	2357	2593	
	66 1/8" ~ 72"	538	795	990	1185	1487	1681	1905	2096	2306	2536	2791	
	72 1/8" ~ 78"	567	843	1057	1269	1577	1794	2037	2241	2465	2712	2982	
	78 1/8" ~ 84"	606	901	1135	1371	1706	1939	2167	2384	2622	2884	3172	
	84 1/8" ~ 90"	639	955	1203	1451	1804	2056	2305	2534	2787	3067	3374	
90 1/8" ~ 96"	663	1003	1268	1538	1905	2167	2433	2676	2944	3238	3563		
96 1/8" ~ 108"	724	1102	1403	1712	2112	2411	2697	2967	3264	3589	3948		
Each Add 6" in Height (1)		53	77	89	95	119	130	147	163	178	196	217	
Duo-Fold/Roll-Ease Surcharge (2)		132	157	177	190	201	210	220	242	266	294	321	
6" Valance Only on Headrail (3)		57	76	96	121	140	156	174	191	210	232	254	

* 2 on 1 headrail recommended

CHART 5

		←----- WIDTH -----→							-----→			
		10" ~ 24"	24 1/8" ~ 36"	36 1/8" ~ 48"	48 1/8" ~ 60"	60 1/8" ~ 72"	72 1/8" ~ 84"	84 1/8" ~ 96"	96 1/8" ~ 108"	108 1/8" ~ 120"	120 1/8" ~ 132"	132 1/8" ~ 144"
↑ H E I G H T ↓	UP TO 36"	393	560	692	859	1101	1228	1386	1525	1678	1845	2030
	36 1/8" ~ 42"	416	619	768	958	1228	1364	1554	1709	1881	2069	2276
	42 1/8" ~ 48"	457	675	867	1059	1348	1511	1718	1890	2079	2288	2516
	48 1/8" ~ 54"	509	727	947	1162	1467	1650	1889	2078	2285	2515	2765
	54 1/8" ~ 60"	549	804	992	1263	1594	1791	2048	2253	2479	2726	3000
	60 1/8" ~ 66"	604	892	1141	1363	1711	1935	2217	2438	2683	2950	3246
	66 1/8" ~ 72"	645	953	1222	1463	1836	2075	2385	2624	2885	3174	3491
	72 1/8" ~ 78"	679	1009	1305	1568	1948	2215	2550	2804	3084	3392	3731
	78 1/8" ~ 84"	736	1095	1420	1716	2134	2427	2713	2983	3282	3610	3971
	84 1/8" ~ 90"	774	1159	1506	1816	2257	2572	2882	3171	3488	3837	4221
90 1/8" ~ 96"	805	1219	1586	1924	2385	2713	3045	3348	3684	4052	4458	
96 1/8" ~ 108"	1042	1455	2228	2374	2936	3266	3684	4054	4458	4904	5394	
Each Add 6" in Height (1)		59	83	95	100	124	136	154	169	185	202	222
Duo-Fold/Roll-Ease Surcharge (2)		132	157	177	190	201	210	220	242	266	294	321
6" Valance Only on Headrail (3)		62	85	107	144	154	172	189	208	230	252	277

* 2 on 1 headrail recommended

CHART 6

		←----- WIDTH -----→							-----→			
		10" ~ 24"	24 1/8" ~ 36"	36 1/8" ~ 48"	48 1/8" ~ 60"	60 1/8" ~ 72"	72 1/8" ~ 84"	84 1/8" ~ 96"	96 1/8" ~ 108"	108 1/8" ~ 120"	120 1/8" ~ 132"	132 1/8" ~ 144"
↑ H E I G H T ↓	UP TO 36"	512	727	900	1117	1431	1596	1803	1982	2181	2399	2639
	36 1/8" ~ 42"	541	805	999	1245	1596	1773	2021	2222	2445	2688	2958
	42 1/8" ~ 48"	594	878	1128	1376	1751	1965	2234	2457	2704	2973	3271
	48 1/8" ~ 54"	662	946	1231	1510	1907	2146	2455	2702	2971	3268	3595
	54 1/8" ~ 60"	713	1046	1290	1641	2072	2328	2664	2929	3223	3545	3900
	60 1/8" ~ 66"	785	1159	1482	1772	2224	2516	2881	3169	3487	3835	4219
	66 1/8" ~ 72"	838	1239	1588	1902	2387	2697	3100	3410	3751	4127	4539
	72 1/8" ~ 78"	882	1311	1696	2038	2532	2880	3314	3645	4010	4411	4852
	78 1/8" ~ 84"	957	1423	1846	2231	2774	3156	3526	3879	4266	4694	5161
	84 1/8" ~ 90"	1008	1507	1958	2361	2934	3343	3747	4122	4534	4987	5486
90 1/8" ~ 96"	1047	1584	2061	2501	3100	3526	3958	4354	4789	5268	5795	
96 1/8" ~ 108"	1354	1891	2895	3086	3817	4245	4791	5269	5797	6377	7014	
Each Add 6" in Height (1)		65	89	100	107	130	142	160	175	190	208	229
Duo-Fold/Roll-Ease Surcharge (2)		132	157	177	190	201	210	220	242	266	294	321
6" Valance Only on Headrail (3)		67	95	119	158	169	189	207	224	249	274	301

* 2 on 1 headrail recommended

Lining Price Charts

Important Notes

- Lining is attached to back of shade unless it is a contour shade.
- Lining is subject to wrinkling.
- Surcharge to be added to the retail price of the shade.
- Available with all patterns.

Privacy Lining Surcharge: *White Sheer, *Standard Ivory/White Privacy, *COM Lining + net \$20/shade.

		WIDTH										
		10" ~ 24"	24 1/8" ~ 36"	36 1/8" ~ 48"	48 1/8" ~ 60"	60 1/8" ~ 72"	72 1/8" ~ 84"	84 1/8" ~ 96"	96 1/8" ~ 108"	108 1/8" ~ 120"	120 1/8" ~ 132"	132 1/8" ~ 144"
HEIGHT ↑	UP TO 36"	132	196	264	329	396	460	527	580	638	702	771
	36 1/8" ~ 42"	147	217	290	364	437	507	580	638	702	772	850
	42 1/8" ~ 48"	157	238	316	396	479	557	636	700	769	846	931
	48 1/8" ~ 54"	174	257	345	431	516	603	689	758	834	917	1009
	54 1/8" ~ 60"	185	279	372	466	557	651	744	817	900	990	1088
	60 1/8" ~ 66"	199	300	398	498	597	697	798	878	966	1062	1168
	66 1/8" ~ 72"	215	320	428	534	638	748	853	938	1032	1135	1249
	72 1/8" ~ 78"	226	340	455	569	680	793	908	998	1099	1209	1329
	78 1/8" ~ 84"	241	360	481	601	722	840	960	1056	1162	1277	1406
	84 1/8" ~ 90"	255	381	507	636	762	888	1016	1119	1230	1354	1488
90 1/8" ~ 96"	270	402	534	672	802	934	1073	1180	1297	1428	1570	
↓	Each Add 6" in Height (1)	23	37	46	53	69	76	88	97	107	117	129

* Lining can have seam.

* 2 on 1 headrail recommended

Colored Lining and Blackout Lining Surcharge:

*Wheat Privacy, Standard Ivory/White Blackout, Tan/White Blackout, Brown/White Blackout, Chocolate/White Blackout.

		WIDTH										
		10" ~ 24"	24 1/8" ~ 36"	36 1/8" ~ 48"	48 1/8" ~ 60"	60 1/8" ~ 72"	72 1/8" ~ 84"	84 1/8" ~ 96"	96 1/8" ~ 108"	108 1/8" ~ 120"	120 1/8" ~ 132"	132 1/8" ~ 144"
HEIGHT ↑	UP TO 36"	145	216	290	361	436	506	580	638	702	772	849
	36 1/8" ~ 42"	162	239	320	399	481	558	638	702	772	850	934
	42 1/8" ~ 48"	174	262	348	436	526	613	700	769	845	931	1024
	48 1/8" ~ 54"	191	283	380	474	569	663	721	835	917	1009	1109
	54 1/8" ~ 60"	204	307	409	513	613	716	817	900	990	1090	1197
	60 1/8" ~ 66"	219	330	438	548	658	767	878	966	1062	1168	1285
	66 1/8" ~ 72"	237	352	471	587	702	823	938	1032	1135	1249	1373
	72 1/8" ~ 78"	249	374	501	625	748	873	998	1098	1209	1329	1462
	78 1/8" ~ 84"	265	396	529	661	793	925	1056	1162	1277	1405	1546
	84 1/8" ~ 90"	281	419	558	700	838	977	1119	1231	1352	1489	1637
90 1/8" ~ 96"	296	442	587	739	882	1029	1180	1298	1427	1570	1728	
↓	Each Add 6" in Height (1)	25	41	51	59	76	85	97	107	117	129	141

* Lining can have seam.

* 2 on 1 headrail recommended

Lining Options

- Privacy liner (thermal suede): Translucent liner that allows sunlight to filter through. White Sheer, Ivory/White, Wheat Privacy.
- Blackout liner (thermal suede): Opaque room darkening liner. Ivory/White, Tan/White, Brown/White, Chocolate/White.
- Custom's Own Material (COM liner): Please indicate when ordering and send material to the factory.
- Liner material comes with horizontal splice every 54".
- Blackout will come colored side in unless specified otherwise.
- COM lining is subject to a net \$20.00 labor surcharge per shade.

Additional Information

Materials and Characteristics

- Designer Natural Shades are an aesthetic collection of natural woods, bamboos, rattans, jutes, grasses, and reeds harvested from nature.
- Each season's harvests are a celebration of unique textures, colors, and striations that develop in nature.
- Natural materials are subject to variances in color, grain, texture, and warpage that are inherent qualities of all natural fibers.
- These variances are NOT manufacturing defects. The beauty of Designer Natural Shades lies in the distinctive irregularity of the slats and reeds.

Color Variations

- Even though rigid quality standards are maintained, the factory cannot guarantee exact color matches in each of the collections.
- Variations in color are natural and will be especially visible in lighter colored fibers.
- Variations in color will occur and are NOT manufacturing defects.
- Over time, the color of Designer Natural Shades will soften in the sun, exposing the beauty of mild tones.
- To avoid color variations that may occur between dye lots, it is highly recommended that multiple shade orders of the same pattern be placed at one time. This will lower the possibility of color variation due to different paints and stains.
- The factory is not responsible for variances in color for orders of the same pattern placed at different times.
- Availability of colors is subject to change without notice.

Stretching, Shrinking, Cracks

- Woven wood fabric can be affected by temperature and humidity changes, which can stretch or shrink the material.
- Shipping and handling may also cause a slight change in shade lengths.

Note: *Material stretching / shrinking may be more noticeable on I.M. shades where exact lengths are more critical.*

- * Finished shade height may vary if exact dimension falls in the middle of a wide slat.
- * Finished shade height may have a tolerance of $\pm 1"$.

- Bamboo matchsticks have a tendency to stretch after installation.
- Finished edges of bamboo and large reeds may crack after cutting and assembly due to the inherent property of the natural materials.

Services

Sample Books and Memo Samples

	Designer Natural Shades		The Avalon collection	The Avalon II collection
	Vol.1	Vol.2		
Number of patterns	51 patterns	51 patterns	58 patterns	59 patterns
Pricing	\$60.00	\$80.00	\$80.00	\$120.00

Memo Samples

Providing samples free of charge is a service that we extend to better accommodate the needs of our clientele. Please do not take advantage of this service. If you would like more than 10 memo samples, please consider purchasing the sample book.

Ordering

Ordering process

We accept written fax orders, mail orders, and e-mail orders.

A confirmation will be sent via facsimile the following day after the order is placed.

Changes and Cancellations

We will be happy to make any changes or cancellations to your purchase order within 24 hours after it has been placed. After 24 hours, full net charges are applicable. Please contact your factory representative for further details.

Standard Lead time

Standard delivery time is 7-10 business days after receipt of complete order (excluding weekends, holidays, and factory closure days). We are not responsible for delays or failure of performance caused by out-of-stock materials, shipping delays, or temporary factory overload. Options may add to delivery lead time.

Restocking fee: 20% of your order price.

Rush Orders

	Net surcharge per shade
Same day rush	\$30.00
1 day rush	\$20.00
2 day rush	\$18.00
3 day rush	\$15.00

Services

Billing and Payment terms

- Payment in U.S. Currency only. Please remit payment via check, Visa™, MasterCard™, or American Express™.
- New account first orders must be prepaid or C.O.D. in full.
- Accounts unpaid within 30 days of invoice date will be assessed 2% per month (24% per year) from date there of until paid.
- Late accounts may be turned over to collection for full payment, including collection agency fees, attorney's fees, and court costs.
- Accounts that have unpaid invoices over 30 days will automatically become prepay / C.O.D. Accounts.
- All pending orders and shipments will be withheld if the account shows any past due invoices over 30 days.

Shipping and Handing

- There is no charge for will calls.
- Air freight available. Collect freight charges will apply.
- For international shipments, please contact your factory representative for further assistance.
- Maximum shipping charge is \$150.00 per order.
- Maximum shipping charge for outside of California is \$190.00 per order.

Shipping and Handing Fees

Width	36"	48"	60"	72"	84"	96"	Over 96"
Cost/Shade	\$12.00	\$15.00	\$20.00	\$24.00	\$30.00	\$39.00	\$150.00

All shipments F.O.B. San Jose. Orders without specific shipping directions will be shipped the method deemed most suitable by the factory. The factory does not take responsibility for shipping delays, damages or loses. Please inspect products upon receipt and notify the factory of any damages or losses with one week of receipt. All claims must be made within 30 days of date of invoice. The factory is not responsible for trip charges or installation costs. The factory is not responsible for any international duties, customs fees, or taxes.

Services

Claims and Returns

Defective Merchandise

All manufacturing defects must be reported within one week of receipt of shades. We require the return of defective shades prior to repair or replacement.

Repair & Alteration requests

If a repair or shade alteration is needed, please contact your factory representative for more details prior to return for repair. Repairs should be carefully packaged. Products that have been mishandled or received in poor condition will be returned back to the customer. We do not honor charge backs for unauthorized repairs or additional installation.

- * Standard alteration / repair fee: \$45 net per shade. In addition to any further alteration charges.
- * Add an additional \$15 net for alterations to lined shades.

Care and Maintenance

Woven wood shades are easy to maintain and are extremely durable. Raising and lowering shades periodically aids in the reduction of dust accumulation. Or simply vacuum with a soft brush attachment. In high traffic areas, you may want to scotch guard your shades with 3M Scotch Guard spray for added stain protection. The functional lifetime of the operating hardware is far greater than normally needed.

Three Year Limited Warranty

We are proud to offer a three year limited warranty to our customers. Each shade undergoes careful inspection before being sent out to our customers. Under normal and proper use, three year limited warranty applies such shades are free from defects due to faulty workmanship or materials. This warranty is not applicable to accidents, alteration, abuse, misuse, misapplication, or failure to follow instructions or defects due to faulty installation. For claims covered during the warranty period, product will be replaced or repaired free of charge.

Natural conditions such as color variance and fading due to sun exposure, slats / reeds warpage from high humidity, as well as stretching and shrinking of shades due to temperature and humidity, are excluded from the warranty. This warranty does not cover liability for loss, damage or injury, direct or consequential, arising out of the use or inability to use the product. Warranty does not cover labor on location, service calls, reinstallation or expenses involved in shipping, packing and returning merchandise unless authorized by your factory representative.

Woven Roman Shade Order Form

Sold To: _____

Ship To: _____

Quotation

Account No: _____

PO: _____

Line	Pattern and Sku	Width X Height	Mount	Style <small>Select one style</small>	Control <small>Select between cord lock, Roll Ease and Motor</small>	Lining <small>Select lining, for Contour select liner and control</small>	Contour Liner Control	Banding <small>Select between flat and folded with 2 or 3 sides</small>	Options
			<input type="checkbox"/> IM <input type="checkbox"/> OM <input type="checkbox"/> RET <small>Returns are not included with OM</small>	<input type="checkbox"/> Roman <input type="checkbox"/> Old Style <input type="checkbox"/> Duo-fold <input type="checkbox"/> Hobble <input type="checkbox"/> Contour Roman <input type="checkbox"/> Contour Old Style	<input type="checkbox"/> R <input type="checkbox"/> L <input type="checkbox"/> Cord Lock <input type="checkbox"/> Roll Ease (EZ) <input type="checkbox"/> Battery (1.5" HR) <input type="checkbox"/> Sonesse 30 (1.5" HR) <input type="checkbox"/> Sonesse 40 (3.5" HR) <input type="checkbox"/> Sonesse 50 (3.5" HR)	<input type="checkbox"/> White Sheer <input type="checkbox"/> Privacy <input type="checkbox"/> Wheat <input type="checkbox"/> Blackout <input type="checkbox"/> Tan B/O <input type="checkbox"/> Brown B/O <input type="checkbox"/> Chocolate B/O	<input type="checkbox"/> R <input type="checkbox"/> L	<input type="checkbox"/> Flat Edge <input type="checkbox"/> Folded Edge <input type="checkbox"/> 2 Sides <input type="checkbox"/> 3 Sides	QTY _____
			<input type="checkbox"/> IM <input type="checkbox"/> OM <input type="checkbox"/> RET <small>Returns are not included with OM</small>	<input type="checkbox"/> Roman <input type="checkbox"/> Old Style <input type="checkbox"/> Duo-fold <input type="checkbox"/> Hobble <input type="checkbox"/> Contour Roman <input type="checkbox"/> Contour Old Style	<input type="checkbox"/> R <input type="checkbox"/> L <input type="checkbox"/> Cord Lock <input type="checkbox"/> Roll Ease (EZ) <input type="checkbox"/> Battery (1.5" HR) <input type="checkbox"/> Sonesse 30 (1.5" HR) <input type="checkbox"/> Sonesse 40 (3.5" HR) <input type="checkbox"/> Sonesse 50 (3.5" HR)	<input type="checkbox"/> White Sheer <input type="checkbox"/> Privacy <input type="checkbox"/> Wheat <input type="checkbox"/> Blackout <input type="checkbox"/> Tan B/O <input type="checkbox"/> Brown B/O <input type="checkbox"/> Chocolate B/O	<input type="checkbox"/> R <input type="checkbox"/> L	<input type="checkbox"/> Flat Edge <input type="checkbox"/> Folded Edge <input type="checkbox"/> 2 Sides <input type="checkbox"/> 3 Sides	QTY _____
			<input type="checkbox"/> IM <input type="checkbox"/> OM <input type="checkbox"/> RET <small>Returns are not included with OM</small>	<input type="checkbox"/> Roman <input type="checkbox"/> Old Style <input type="checkbox"/> Duo-fold <input type="checkbox"/> Hobble <input type="checkbox"/> Contour Roman <input type="checkbox"/> Contour Old Style	<input type="checkbox"/> R <input type="checkbox"/> L <input type="checkbox"/> Cord Lock <input type="checkbox"/> Roll Ease (EZ) <input type="checkbox"/> Battery (1.5" HR) <input type="checkbox"/> Sonesse 30 (1.5" HR) <input type="checkbox"/> Sonesse 40 (3.5" HR) <input type="checkbox"/> Sonesse 50 (3.5" HR)	<input type="checkbox"/> White Sheer <input type="checkbox"/> Privacy <input type="checkbox"/> Wheat <input type="checkbox"/> Blackout <input type="checkbox"/> Tan B/O <input type="checkbox"/> Brown B/O <input type="checkbox"/> Chocolate B/O	<input type="checkbox"/> R <input type="checkbox"/> L	<input type="checkbox"/> Flat Edge <input type="checkbox"/> Folded Edge <input type="checkbox"/> 2 Sides <input type="checkbox"/> 3 Sides	QTY _____

Please Note:

- * Inside Mount - 1/2" deduction taken by workshop
- * Returns are not included with outside mounts
- * Lining - white always faces out, unless otherwise specified

Special Instructions / Notes :

