



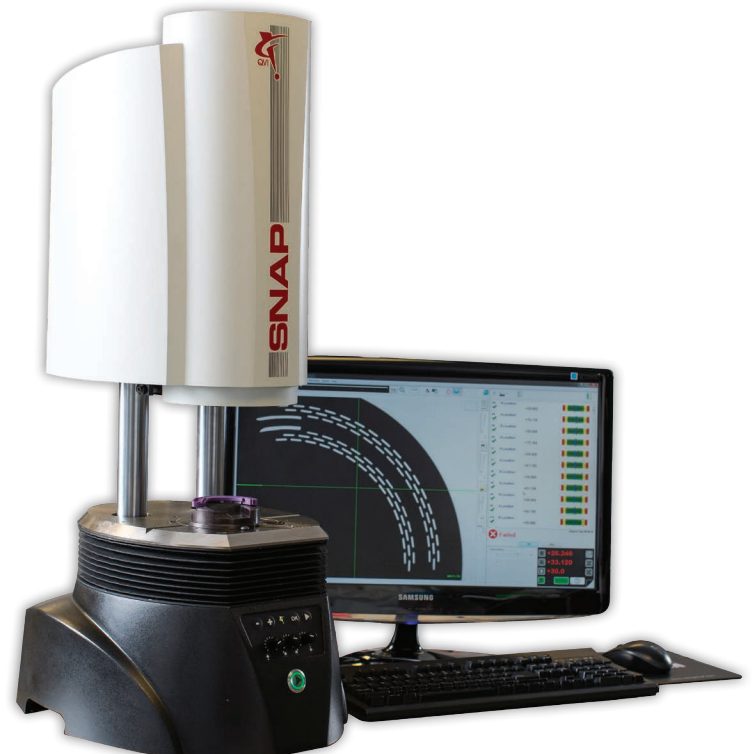
QVI® SNAP™ 100

SNAP 100 completes complex measurements in seconds without moving the part. Simply place the part on the stage and press the GO button. The large-field-of-view optics and AutoID software do the rest.

- Telecentric optics ensure accurate part measurements in shop conditions
- AutoID recognizes any part within its generous 78 mm field of view
- Exclusive Zoom Anywhere™ technology lets you zoom in and measure details anywhere in the viewing area
- SNAP 100 enables fast measurement without fixturing, regardless of part orientation


Benchtop Digital Measuring Machine

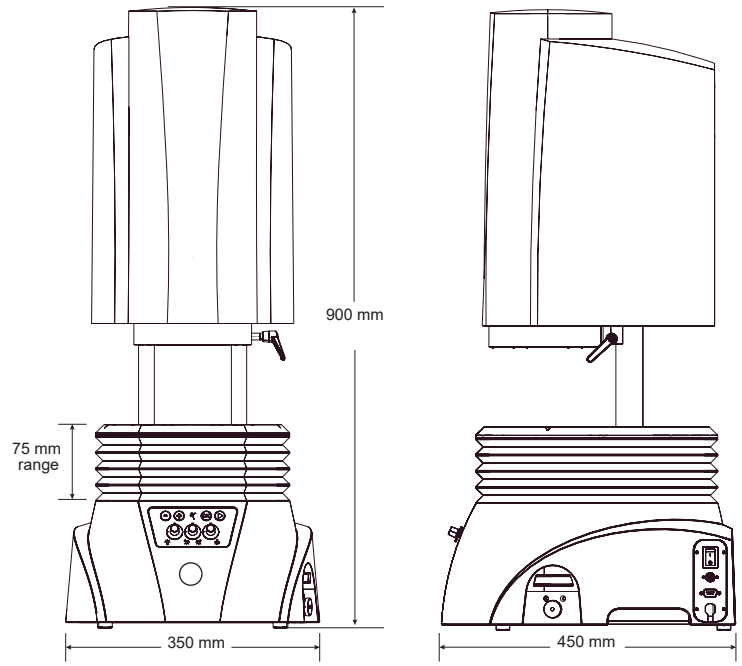
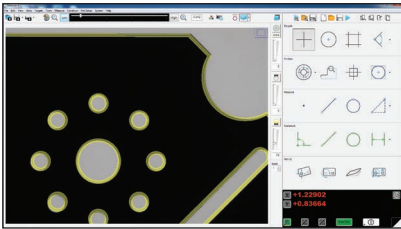
RAM



Measurement Software

SNAP-X™ measurement software provides a full range of feature measurements with an unlimited number of points and measurement steps in a routine. SNAP-X makes it easy for QVI SNAP to accurately identify the part and its orientation.

Programming is simple too. Work from a CAD file, sample part, or just walk up and measure. **To run a part routine, just place the part on the stage and press** 



System Weight: 43.5 kg

	Standard	Optional		
Measuring Unit	Rigid, cast aluminum base and nickel plated worktable, 75 mm manual vertical position adjustment and stage lock 10 kg load capacity, evenly distributed			
Worktable	Manual, Z-position feedback for repeatable worktable positioning	Motorized, Z-position feedback for repeatable worktable positioning		
Optics	Single magnification (fixed lens)	Fully telecentric, dual magnification		
Metrology Camera	QVI® High Density Megapixel Metrology Camera	QVI Large Field Megapixel Metrology Camera		
Field of View (FOV)	78 mm diagonal in 8 digital zoom steps	<i>High Density Camera, Dual Mag:</i> Low Mag 78 mm, High Mag 19.5 mm in 10 zoom steps <i>Large Field Camera, Single Mag:</i> Low Mag 100 mm in 3 zoom steps <i>Large Field Camera, Dual Mag:</i> Low Mag 100 mm, High Mag 24.5 mm in 6 zoom steps		
Depth of Field	Low Mag: 40 mm High Mag: 12 mm	<i>High Density Camera, Dual Mag:</i> Low Mag 40 mm, High Mag 5 mm <i>Large Field Camera, Single Mag:</i> Low Mag 50 mm <i>Large Field Camera, Dual Mag:</i> Low Mag 50 mm, High Mag 10 mm		
Illumination	All LED, green substage profile light, programmable 8 sector green ring light	LED green coaxial surface light		
Image Processing	SNAP advanced image analysis, 256 level grayscale, with 10:1 - 50:1 sub-pixel resolution			
Controls	GO button, illumination controls			
System Controller <small>*Controller configuration subject to change without notice.</small>	QVI standard system controller with networking and communication ports*	Single flat panel LCD monitor, or dual flat panel LCD monitors; keyboard, mouse		
Miscellaneous Options		Motorized Z-axis for programmable focus, rotary indexer, barcode reader, USB digital I/O capability, dust cover, fixture kit, peripheral support frame, calibration artifact		
Rated Environment	Temperature 18-22° C, stable to ±1° C; 30-80% humidity; vibration <0.001g below 15 Hz			
Power	100-120 VAC or 200-240 VAC, 50/60 Hz, 1 phase, 160W			
Accuracy (E₂)^{1,2,3}	Low Digital Mag	High Digital Mag	Low Digital Mag	High Digital Mag
	10 µm	5 µm	10 µm	5 µm

1. All specifications apply to a thermally stable system operated in the rated environment. | 2. QVI calibration artifact P/N 638696 for standard camera; 640685 for optional camera. | 3. Calibration artifacts are described in QVI publication number 790762.



Quality Vision International, Inc.
 Phone: +1 585 758 1300
 Fax: +1 585 506 4307
 raminfo@qvii.com
 www.qvii.com/ram

