

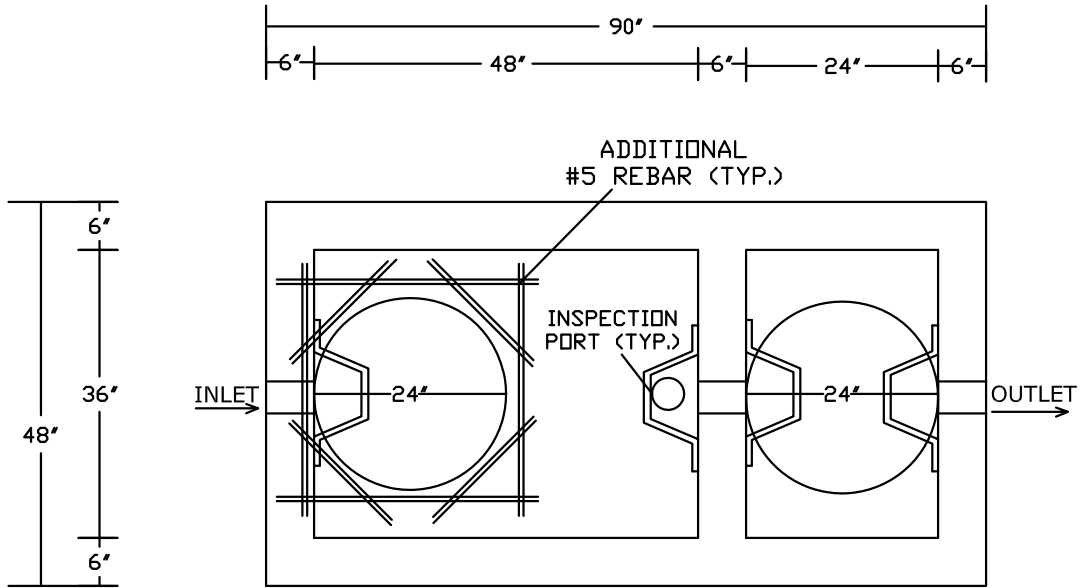
PEERLESS CONCRETE PRODUCTS CO. SINCE 1959

INDEX

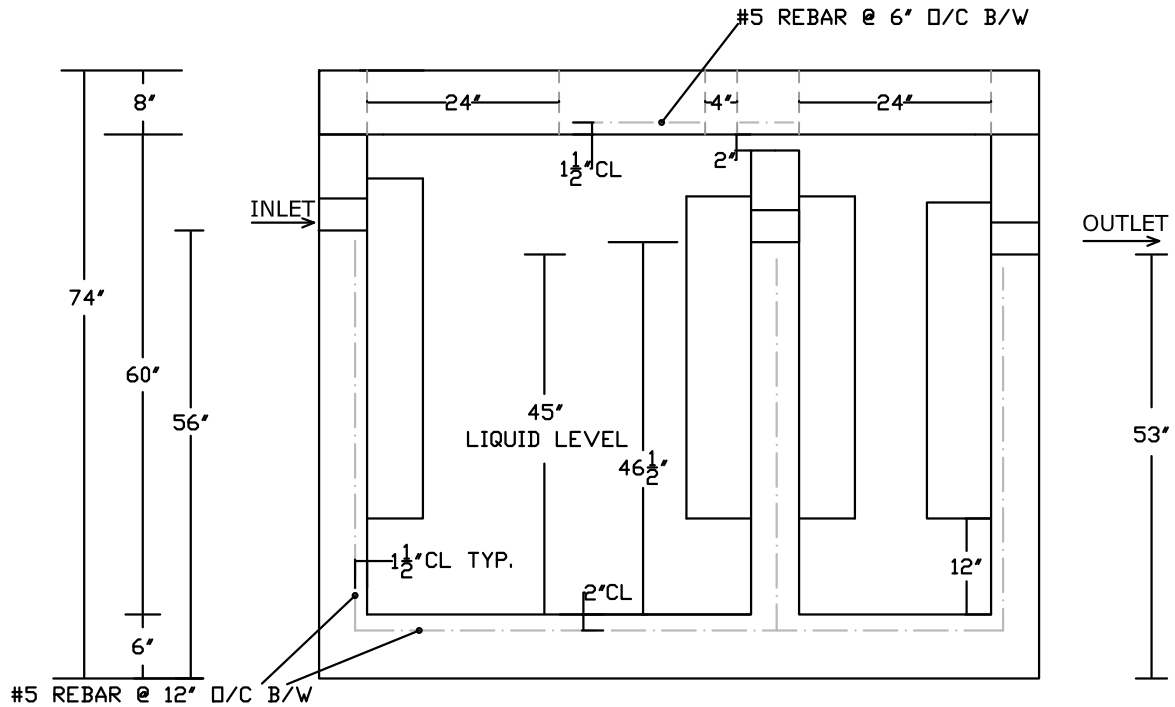
ITEM	PAGE
Section G- <i>Grease Traps/Oil Separators (Index)</i>	G-1
500 Gallon Heavy Duty Grease Trap/Oil Separator (2 Compartment)	G-2
1000 Gallon Heavy Duty Grease Trap/Oil Separator (2 Compartment)	G-3
1250 Gallon Heavy Duty Grease Trap/Oil Separator (2 Compartment)	G-4
1500 Gallon Light Duty Grease Trap/Oil Separator (2 Compartment)	G-5
1500 Gallon Heavy Duty Grease Trap/Oil Separator (2 Compartment)	G-6
2000 Gallon Heavy Duty Grease Trap/Oil Separator (2 Compartment)	G-7
3000 Gallon Heavy Duty Grease Trap/Oil Separator (2 Compartment)	G-8

PEERLESS CONCRETE PRODUCTS CO.

—SINCE 1959—



PLAN VIEW



SECTION VIEW

500 GALLON HEAVY DUTY GREASE TRAP/OIL SEPARATOR (2 COMPARTMENT) (AS BUILT BY PEERLESS)

NOTES:

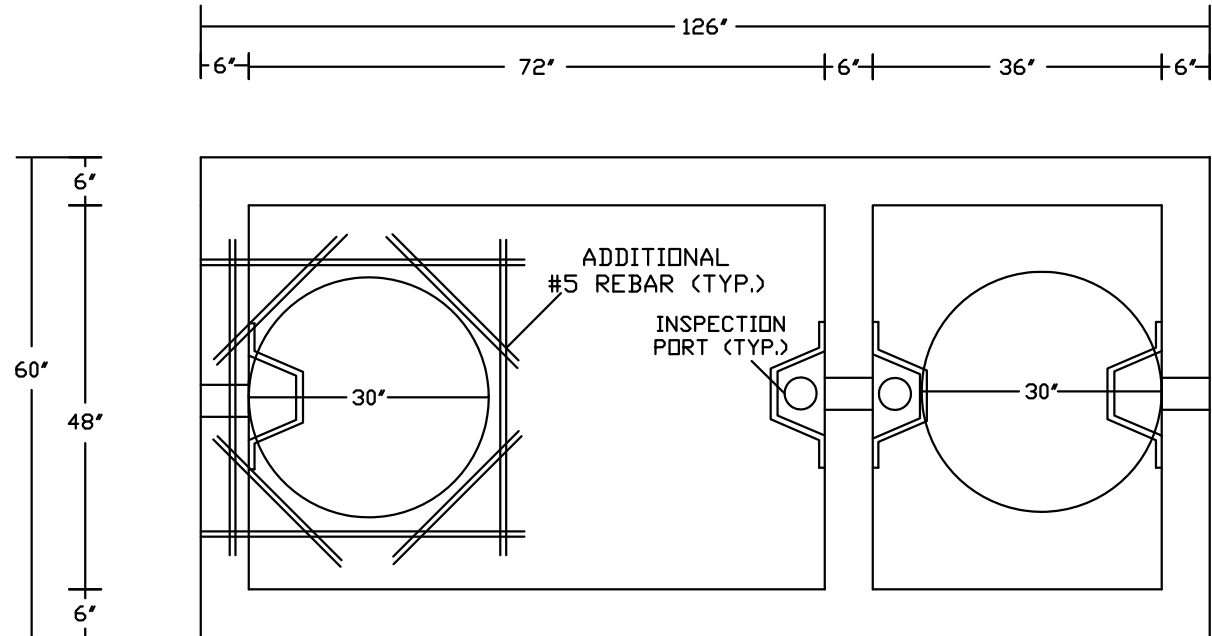
- LOAD RATING: HS-20
- CONCRETE: 4500PSI @ 28 DAYS
- REINFORCING: AS SPECIFIED, GRADE 60 REBAR
- SCALE: 1/2"=1'-0"

- INTERIOR COATED 2 COATS OF APPROPRIATE SEALER
- PLASTIC BAFFLES
- WEIGHT OF TANK BASE: 10,000 LBS.±
- WEIGHT OF LID: 5,000 LBS.±

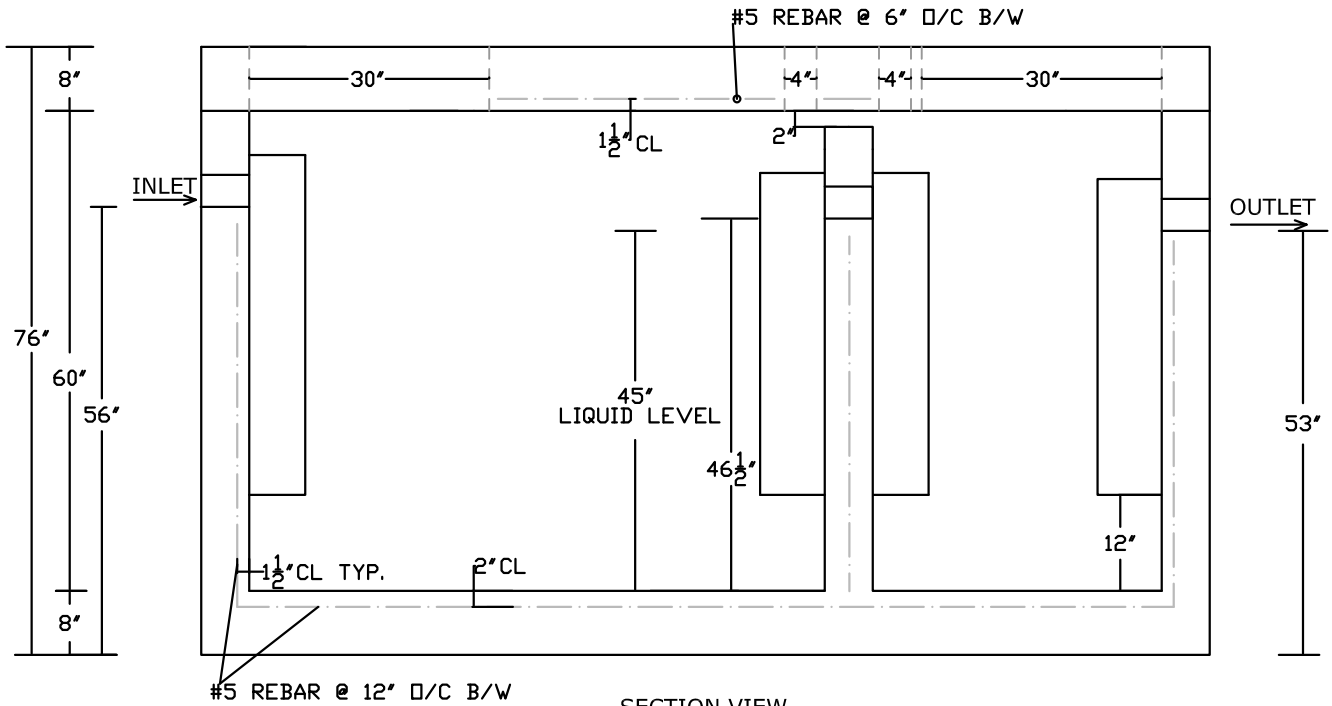
G-2

PEERLESS CONCRETE PRODUCTS CO.

— SINCE 1959 —



PLAN VIEW



SECTION VIEW

1000 GALLON HEAVY DUTY GREASE TRAP/OIL SEPARATOR (2 COMPARTMENT) (AS BUILT BY PEERLESS)

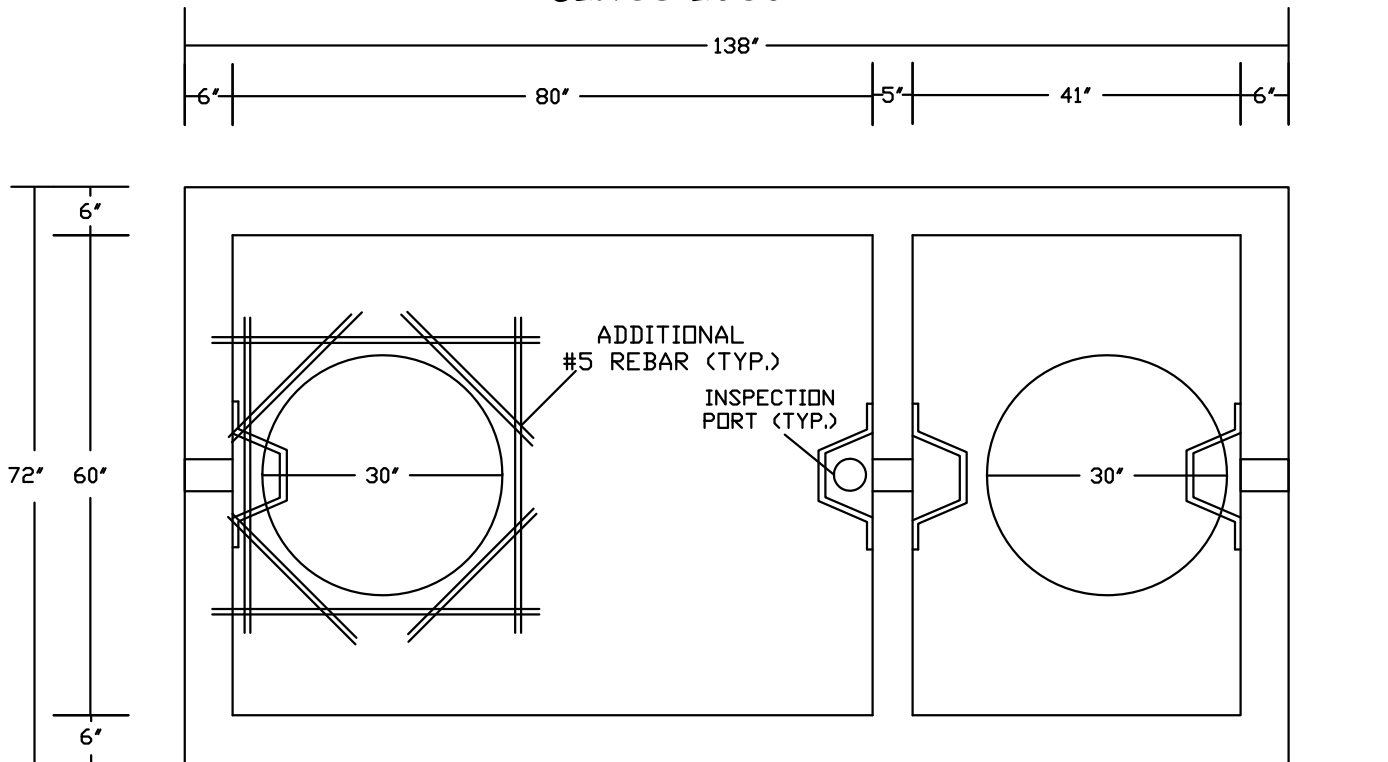
NOTES:

- LOAD RATING: HS-20
- CONCRETE: 4500PSI @ 28 DAYS
- REINFORCING: AS SPECIFIED, GRADE 60 REBAR
- SCALE: 1/2"=1'-0"
- INTERIOR COATED 2 COATS OF APPROPRIATE SEALER
- PLASTIC BAFFLES
- WEIGHT OF TANK BASE: 18,000 LBS.±
- WEIGHT OF LID: 5,500 LBS.±

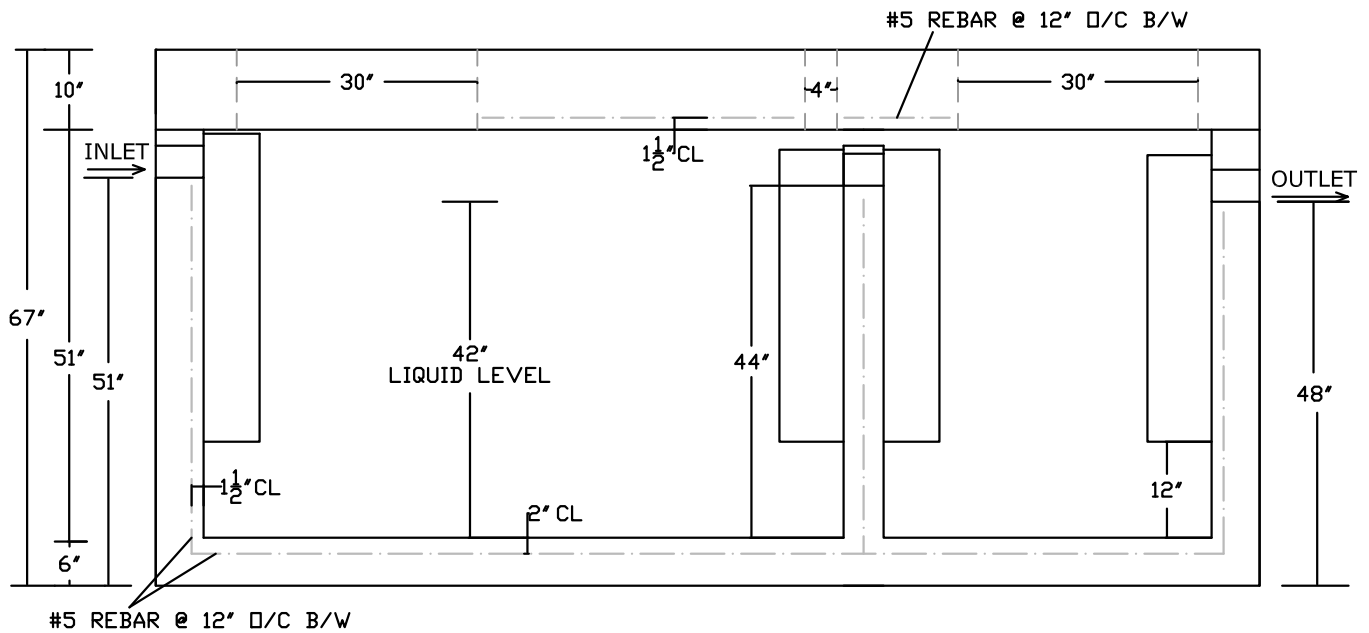
G-3

PEERLESS CONCRETE PRODUCTS CO.

— SINCE 1959 —



PLAN VIEW



SECTION VIEW

1250 GALLON HEAVY DUTY GREASE TRAP/OIL SEPARATOR (2 COMPARTMENT) (AS BUILT BY PEERLESS)

NOTES:

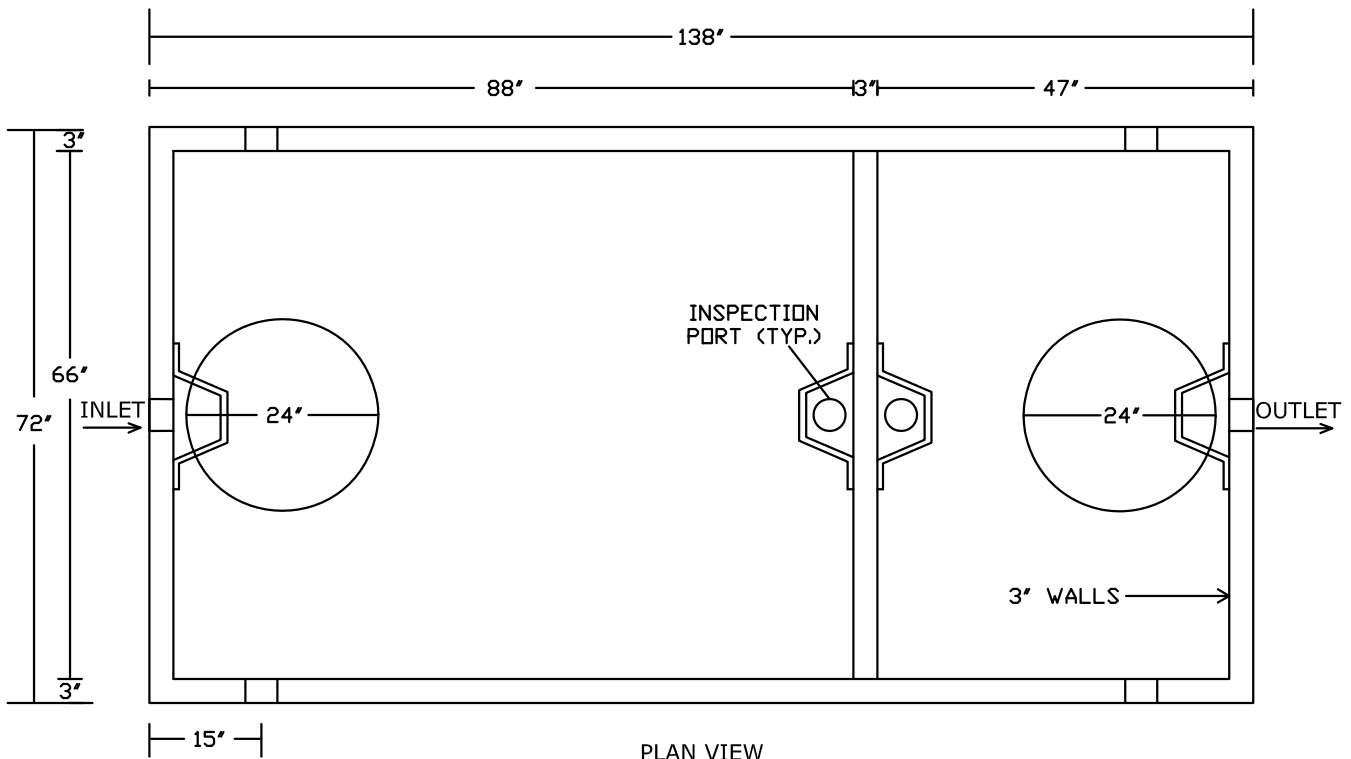
- LOAD RATING: HS-20
- CONCRETE: 4500PSI @ 28 DAYS
- REINFORCING: AS SPECIFIED, GRADE 60 REBAR
- SCALE: 1/2"=1'-0"

- INTERIOR COATING 2 COATS OF APPROPRIATE SEALER
- PLASTIC BAFFLES
- WEIGHT OF TANK BASE: 18,000 LBS. ±
- WEIGHT OF LID: 9,000 LBS. ±

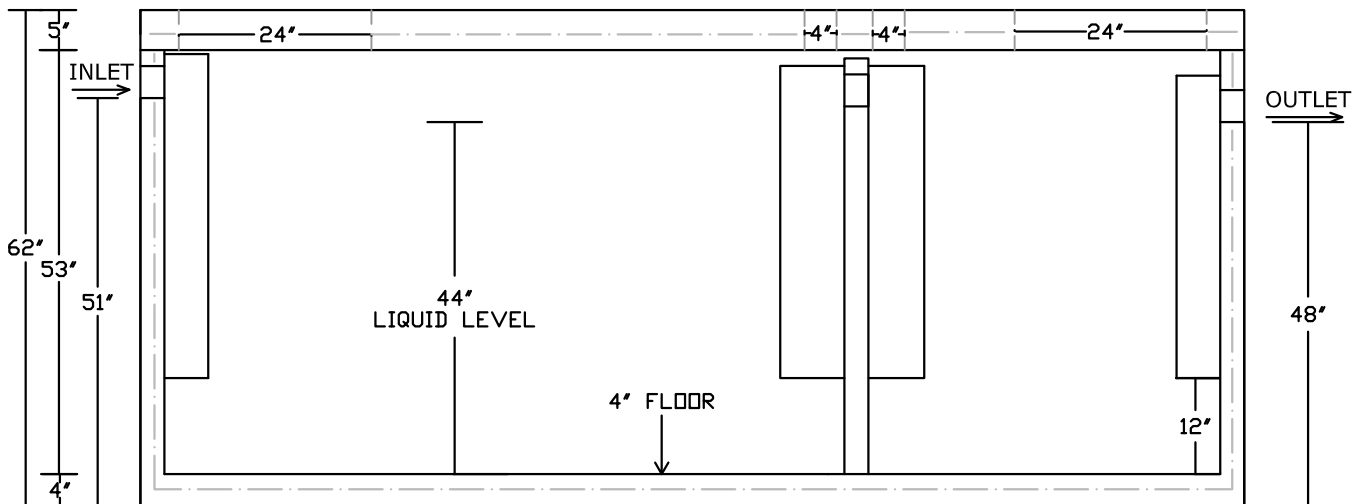
G-4

PEERLESS CONCRETE PRODUCTS CO.

— SINCE 1959 —



PLAN VIEW



SECTION VIEW

1500 GALLON LIGHT DUTY GREASE TRAP/OIL SEPARATOR (2 COMPARTMENT)
(AS BUILT BY PEERLESS)

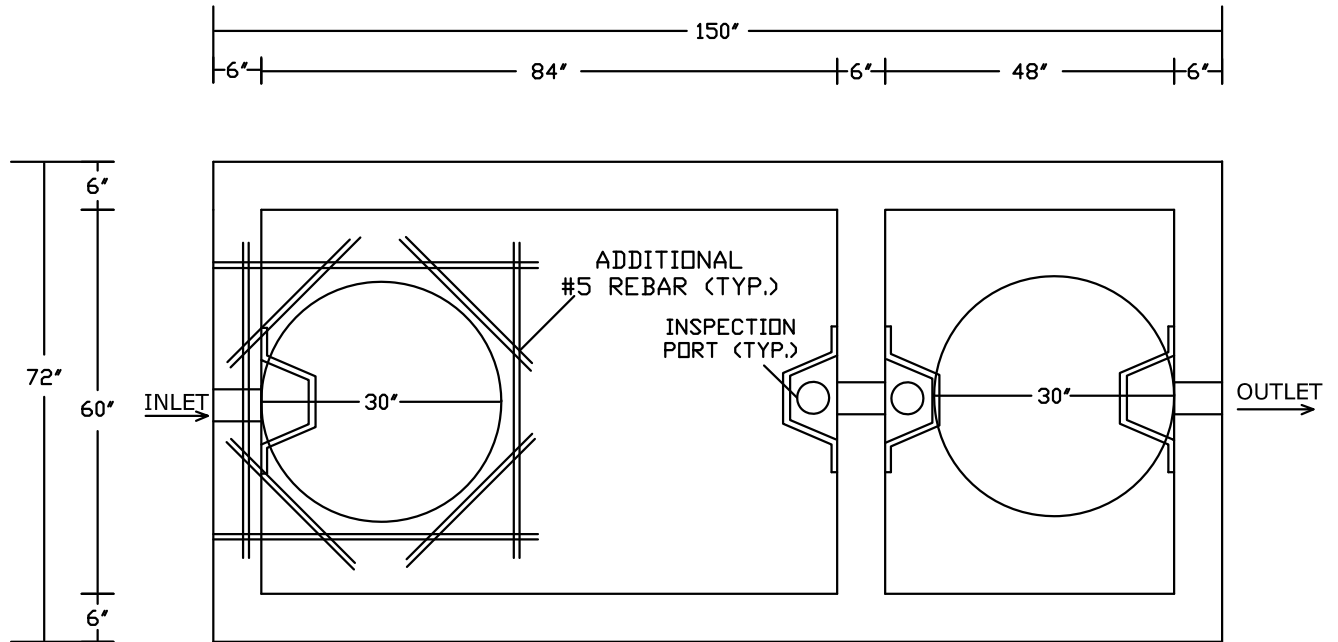
NOTES:

- NON- TRAFFIC RATED
- CONCRETE: 4500PSI @ 28 DAYS
- REINFORCING: DETAILS FURNISHED UPON REQUEST
- SCALE: 1/2"=1'-0"
- INTERIOR COATED 2 COATS OF APPROPRIATE SEALER
- PLASTIC BAFFLES
- TOTAL WEIGHT: 15,000 LBS.±
- TOTAL WGT OF TANK W/O LID: 10,600 LBS.±

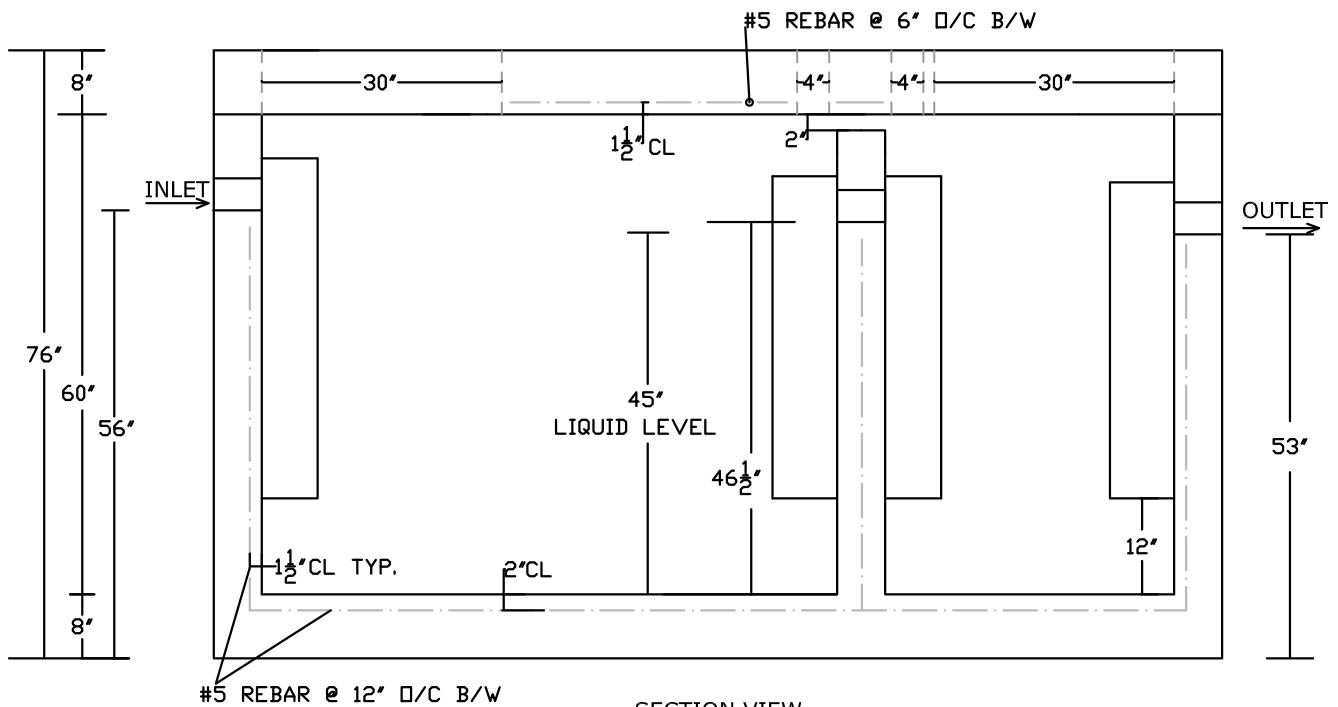
G-5

PEERLESS CONCRETE PRODUCTS CO.

— SINCE 1959 —



PLAN VIEW



SECTION VIEW

1500 GALLON HEAVY DUTY GREASE TRAP/OIL SEPARATOR (2 COMPARTMENT)

(AS BUILT BY PEERLESS)

NOTES:

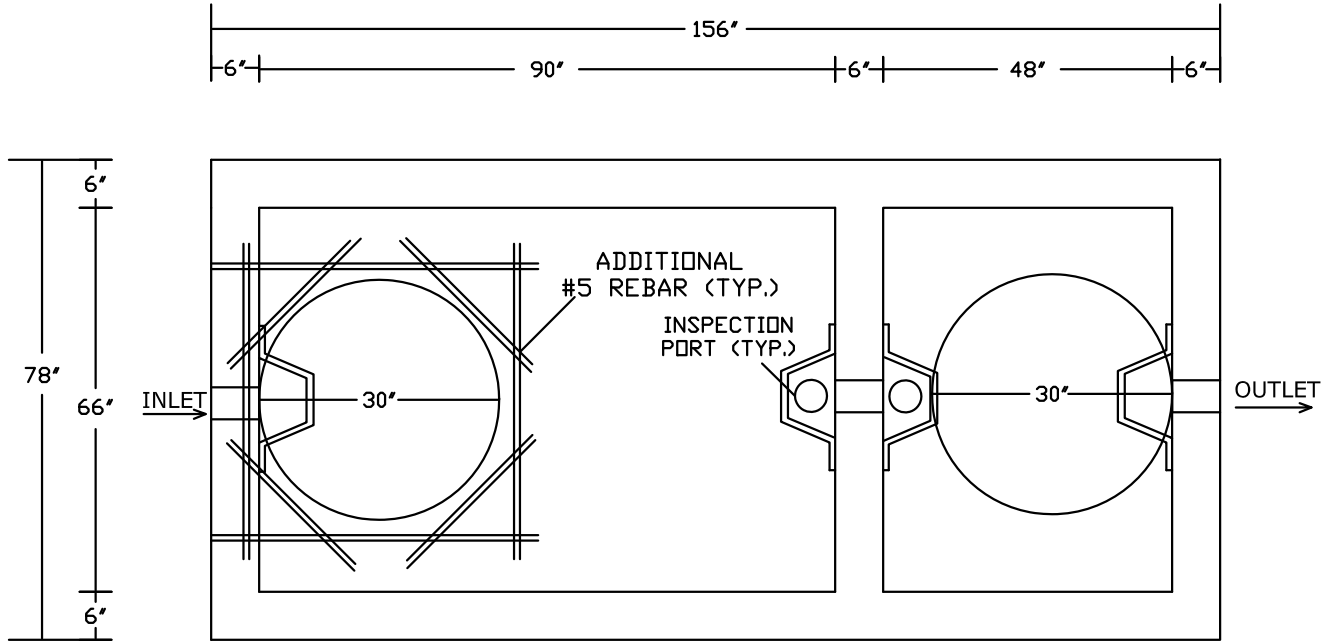
- LOAD RATING: HS-20
- CONCRETE: 4500PSI @ 28 DAYS
- REINFORCING: GRADE 60 REBAR
- SCALE: NTS

- INTERIOR COATED 2 COATS OF APPROPRIATE SEALER
- PLASTIC BAFFLES
- WEIGHT OF TANK BASE: 23,000 LBS. ±
- WEIGHT OF LID: 8,000 LBS. ±

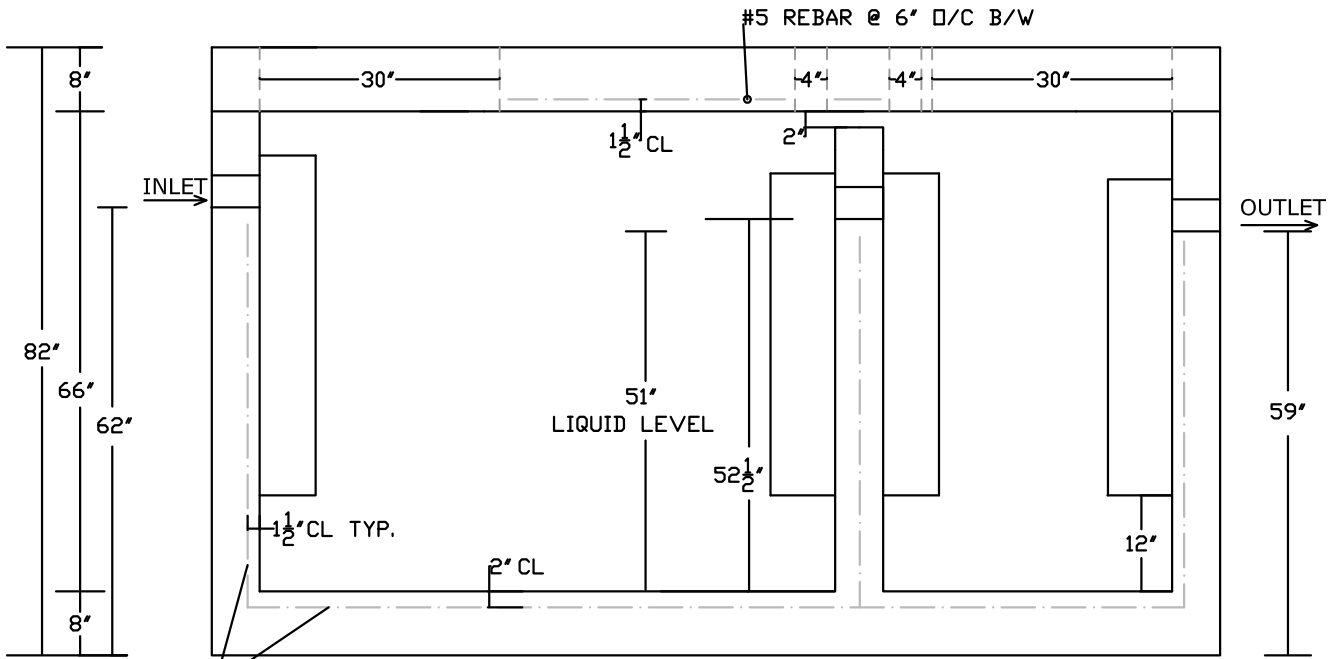
G-6

PEERLESS CONCRETE PRODUCTS CO.

—SINCE 1959—



PLAN VIEW



SECTION VIEW

2000 GALLON HEAVY DUTY GREASE TRAP/OIL SEPARATOR (2 COMPARTMENT)

(AS BUILT BY PEERLESS)

NOTES:

- LOAD RATING: HS-20
- CONCRETE: 4500PSI @ 28 DAYS
- REINFORCING: GRADE 60 REBAR
- SCALE: NTS

- INTERIOR COATED 2 COATS OF APPROPRIATE SEALER
- PLASTIC BAFFLES
- WEIGHT OF TANK BASE: 26,000 LBS. ±
- WEIGHT OF LID: 9,000 LBS. ±

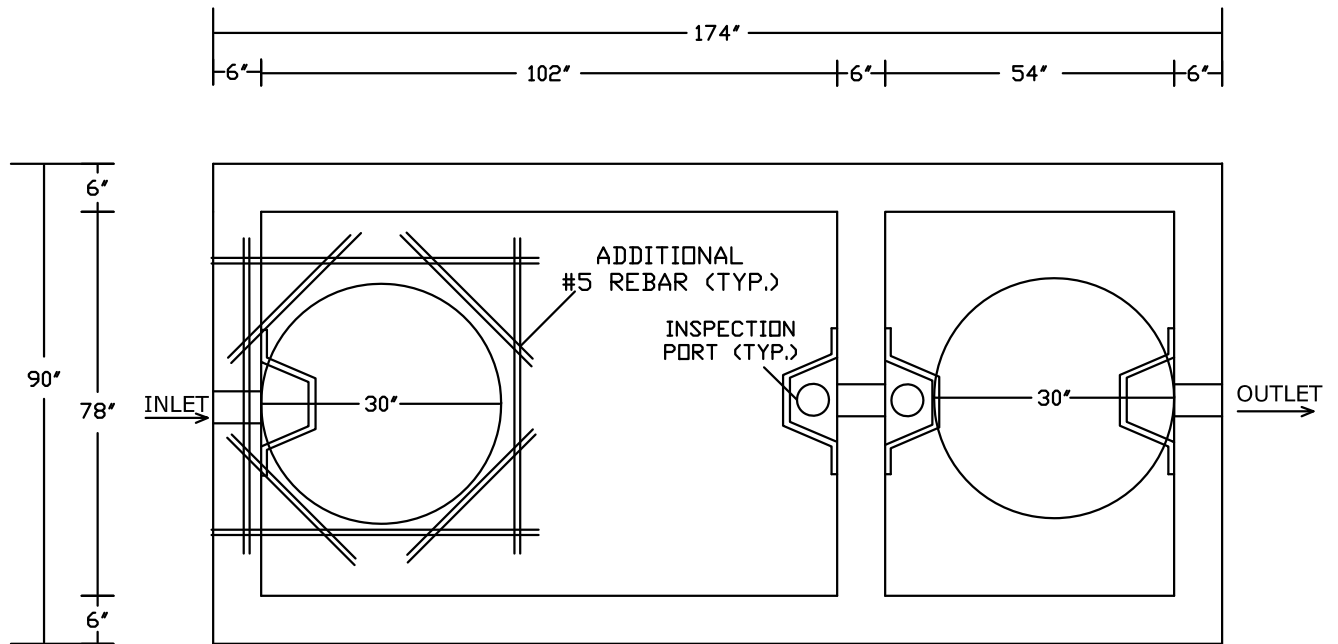
G-7

973.838.3060p - www.peerlessconcrete.com - 973.838.3385f

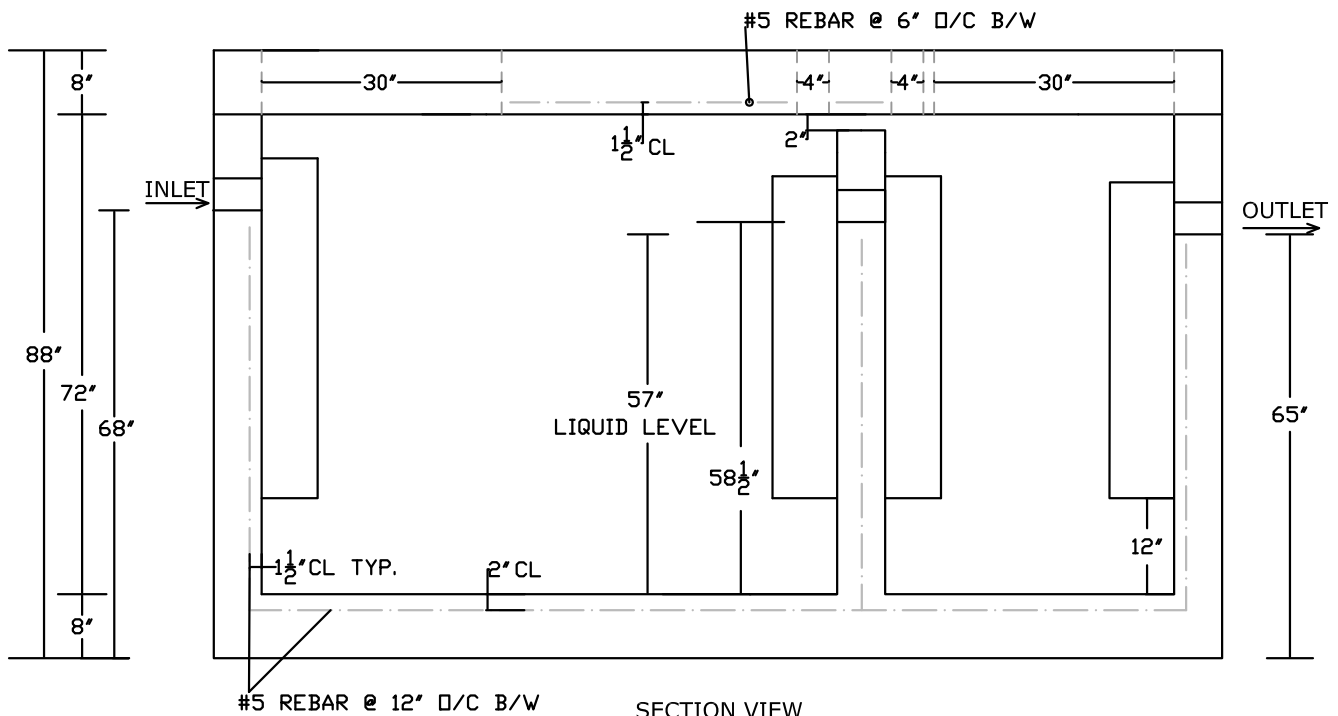
Butler, NJ

PEERLESS CONCRETE PRODUCTS CO.

—SINCE 1959—



PLAN VIEW



SECTION VIEW

3000 GALLON HEAVY DUTY GREASE TRAP/OIL SEPARATOR (2 COMPARTMENT) (AS BUILT BY PEERLESS)

NOTES:

- LOAD RATING: HS-20
- CONCRETE: 4500PSI @ 28 DAYS
- REINFORCING: GRADE 60 REBAR
- SCALE: NTS

- INTERIOR COATED 2 COATS OF APPROPRIATE SEALER
- PLASTIC BAFFLES
- WEIGHT OF TANK BASE: 33,500 LBS. ±
- WEIGHT OF LID: 11,000 LBS. ±

G-8