

Buck Up Outdoors

Visit us at: www.BuckUpOutdoors.com

Buck Up Outdoors

Phone: 612-817-6597

Email: sales@buckupoutdoors.com

Locations:

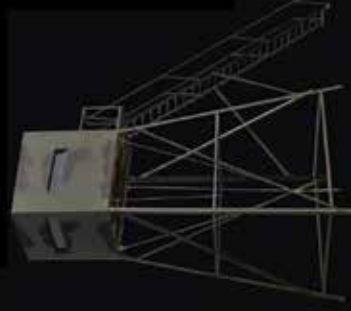
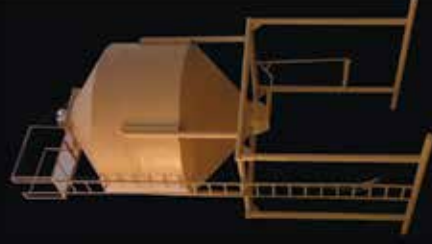
Brainerd

(By Appointment)

Nowthen

19853 Nowthen Blvd. NW

Nowthen, MN 55303



PRODUCT CATALOG

ROAD FEEDERS AND MINI BULK BIN



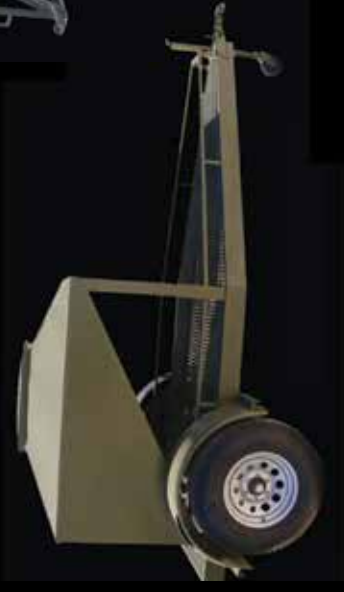
Atascosa Wildlife Supply, Inc. manufactures a wide range of wildlife ranching products. We use heavy, high quality materials to stand up to the most extreme conditions. Our products are well known for their durability and quality. Our experience, knowledge and quality separate us from others.

TABLE OF CONTENTS

Atascosa Hunting Blinds®	pg. 3-6	Protein Feeders	pg. 12
Coolers	pg. 7	Broadcast Feeders	pg. 13
Quik Feed Trailers®	pg. 8-9	Bird and Fish Feeders	pg. 14
Overhead Feed Bins	pg. 10-11	Road Feeders	pg. 15

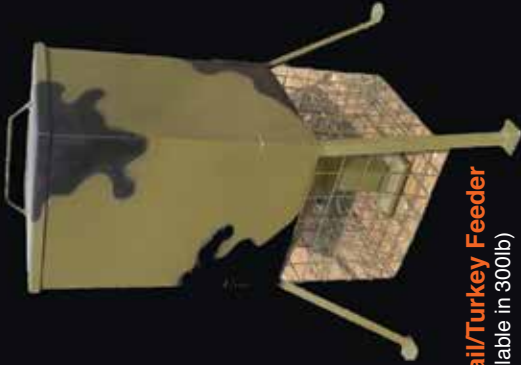


3000lb Mini Feed Bin

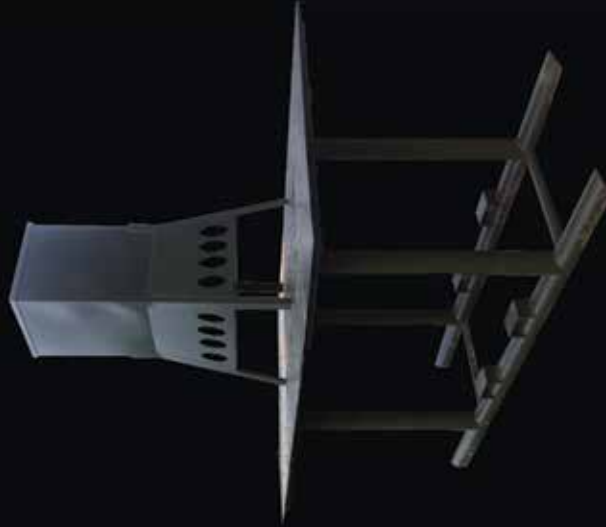




600lb Turkey Feeder



600lb HD Quail/Turkey Feeder
(also available in 300lb)



600lb Turkey Feeder w/Flight Deck



Bird Block Feeder

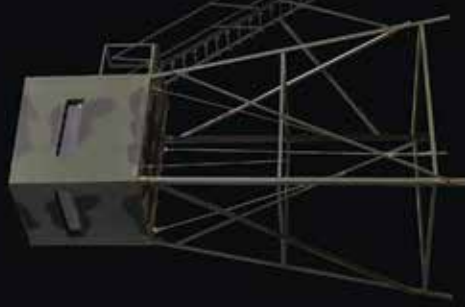
Hunting is safe and comfortable in an Atascosa Blind

The Atascosa Blind® manufactured by Atascosa Wildlife Supply, Inc. is available from ground level to 20' tower models. Box sizes include: 5x5, 5x7 5x9, 10x10 and any other customer size requested. Our towers are built very stable with heavy angle iron construction and all staircases are built with two handrails for safety. The AWS paneling process is double walled with 26 gauge galvanized metal and styrofoam to provide insulation.

The Atascosa Blind® is designed to stand up to weather conditions such as high wind. For those that wish to transport easily, trailer models are available. The Atascosa Blind® provides a safe, secure and comfortable platform for observing wildlife. The Atascosa Blind® is the last blind you will ever buy because it is built to last a lifetime.

Standard Features

- 26 Gauge Metal Construction
- Insulated 2" Heavy Styrofoam
- Aluminum Framed Windows
- Carpet on floor
- Shelves in corners
- Large, heavy porch for safe entrance
- Full walk thru door with keyed lock
- Double hand rail staircase on towers
- Wasp, water and owl proof when doors, windows are kept closed
- Olive Drab/Black Camo
- Zero wood or fiberglass, ALL IRON
- Valspar prepainted, non-peeling metal



5' x 7' - 16'
Atascosa Blind®
(also available in 5' x 5', 5' x 9')



5' x 7'
Ground Bow/Rifle Blind®
(also available in 5' x 5', 5' x 9')



5' x 7' - 4'
Atascosa Hunting Blind®
(also available in 5' x 5', 5' x 9')

ATASCOSA HUNTING BLINDS



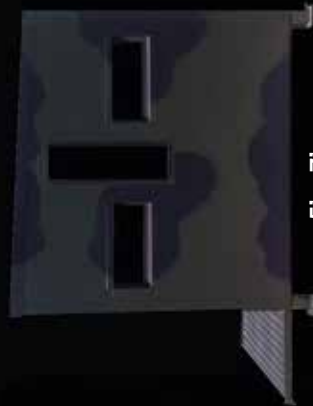
5' x 7'

Atascosa Wheel Chair Blind®
(also available in 5' x 5' and 5' x 9')



5' x 9' - 4'

Atascosa Bushlan Brown Blind
(also available in 5' x 5', 5' x 7')



5' x 7'

Atascosa Bow/Rifle Ground Blind®
(also available in 5' x 5', 5' x 9',
and any tower heights)



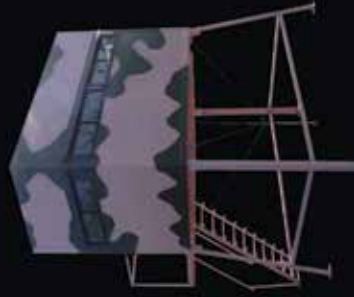
5' x 5'

Atascosa Elevated Trailer Blind®
(also available in 5' x 7', 5' x 9')



5' x 7'

Atascosa Trailer Blind®
(also available in 5' x 5', 5' x 9')



5' x 9' - 6'

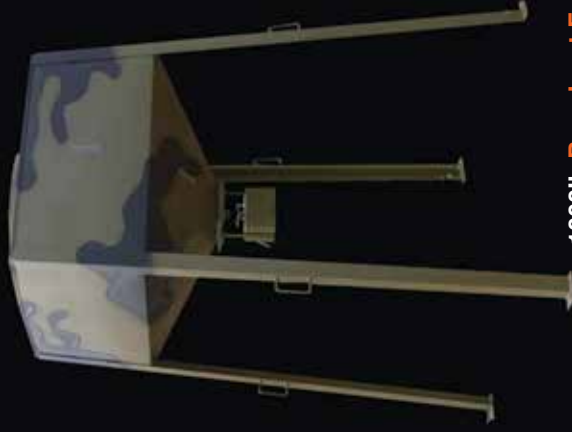
Atascosa Blind in Custom Color
(also available in 5' x 5', 5' x 7',
and any tower heights)



2000lb Broadcast Feeder with Heavy Cage, Skids and Fill Platform
(also available in 1000lb and 3000lb)



1000lb Broadcast Feeder with Skids and Fill Platform
(also available in 2000lb and 3000lb)

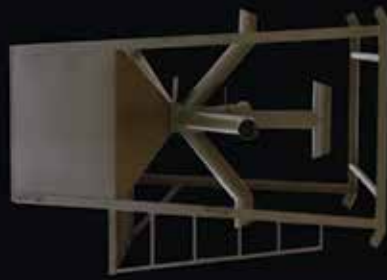


1000lb Broadcast Feeder
(also available in 2000lb and 3000lb)

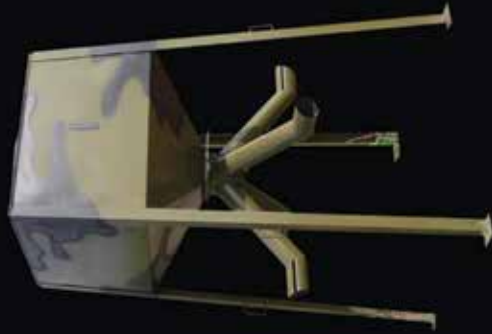


1000lb Quik Fill, Low Profile Broadcast Feeder
(also available in 2000lb)

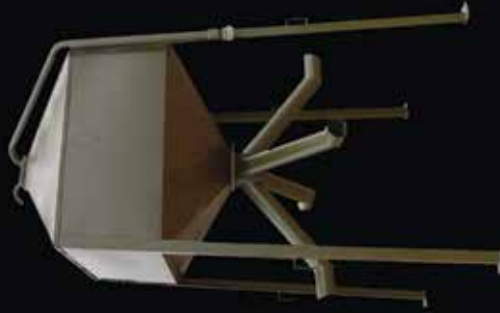
HEAVY DUTY PROTEIN FEEDERS



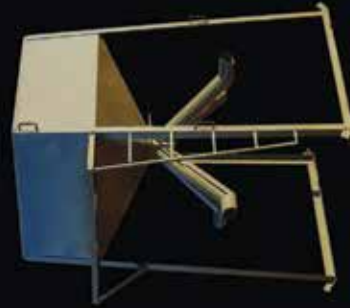
2000lb Breeder Feeder with Skids Fill Platform and Fawn Drop
(also available in 1000lb and 3000lb)



2000lb Ext. Tube Feeder
(also available in 1000lb and 3000lb)



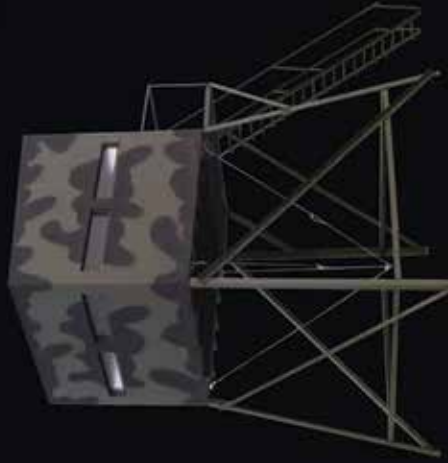
3000lb Quik Connect Feeder®
(also available in 1000lb and 2000lb)



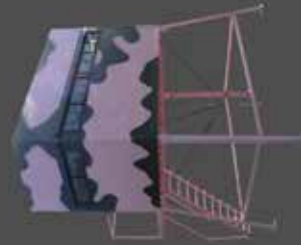
3000lb Ext. Tube with Skids and Fill Platform
(also available in 1000lb and 2000lb)



5' x 9' - 4' Atascosa Bushlan Green Blind
(also available in 5' x 5' and 5' x 7')



10' x 10' - 16' Atascosa Observation Tower



Blind options:

- Shelves under all Windows, Awnings,
- Carpet on walls, AC/Heat,
- Bushlan Camouflage Custom Paint Colors



BUSHLAN HUNTING BLINDS

ATASCOSA HUNTING BLINDS

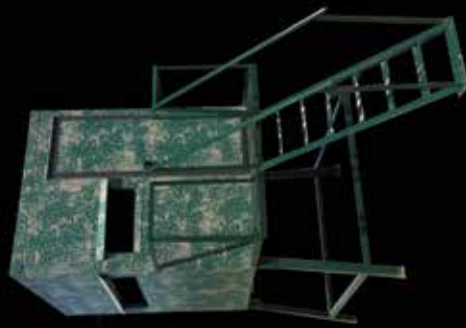
OVERHEAD FEED BINS



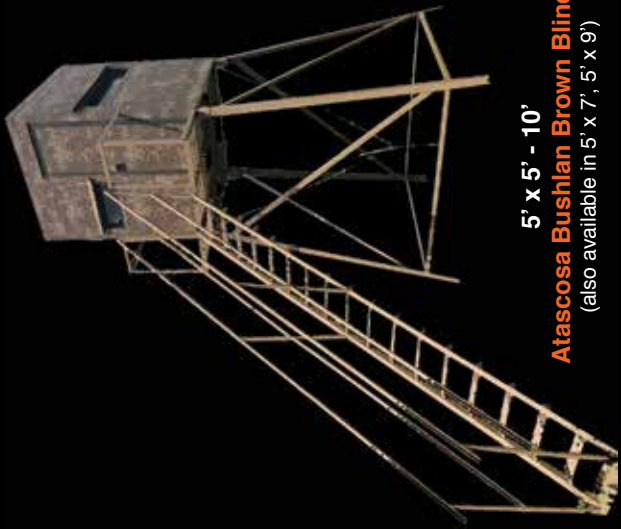
5' x 5'
Atascosa Bushlan Brown Trailer Blind®
(also available in 5' x 7', 5' x 9')



5' x 9'
Atascosa Bushlan Brown Wheelchair Trailer Blind®
(also available in 5' x 5', 5' x 7')



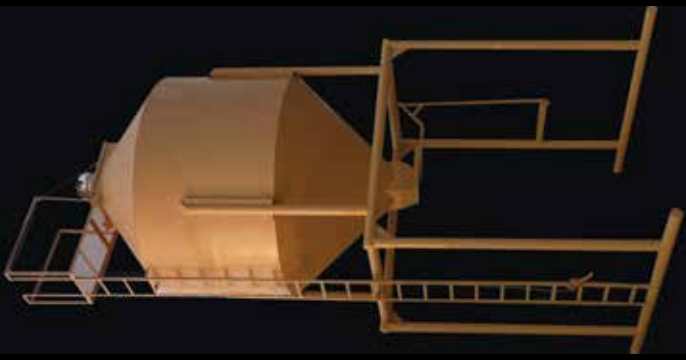
5' x 5' - 4'
Atascosa Bushlan Green Blind
(also available in 5' x 7' and 5' x 9')



5' x 5' - 10'
Atascosa Bushlan Brown Blind®
(also available in 5' x 7', 5' x 9')



28 Ton Double with 4 Ton Quik Feed®
(also available in 14 Ton)



28 Ton Single
(also available in 14 Ton)

Some popular options we are also able to provide are as follows:

- Catwalk & Staircase
- Extra Allowance For Height & Width
- Divider In Hopper (Includes Additional Top & Bottom Door)
- Skids
- Permanent Install

OVERHEAD FEED BINS

AWS manufactures the heaviest built overhead feed bin available. They are constructed of only prime new heavy materials to outlast any other bin on the market. AWS bins are gravity flow and feature an easy slide gate system that allows feed to be distributed with minimum damage. High quality primer and paint are used to ensure years of trouble free use. Standard sizes available include a 14 ton single and 28 ton double. Custom built bins to customer specifications are also available. Delivery and setup are available anywhere in the USA. Choose AWS for your bulk feed bin and you are sure to save time and money with our quality and experience.



14 Ton Round Bin
(also available in 28 Ton)

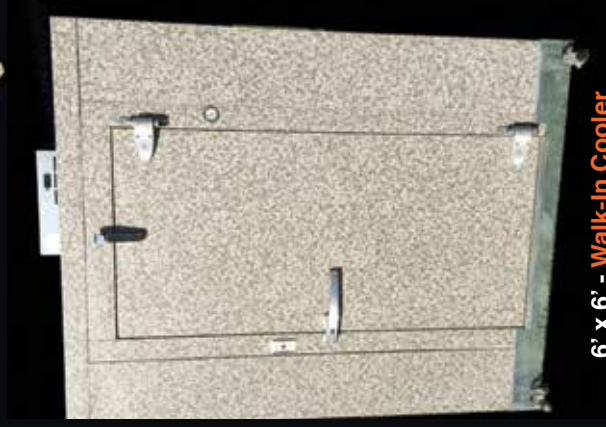
Below is a list of standard options offered on our bulk hoppers:

- 10' Height Clearance
- All 10 Gauge New Material Construction
- Double Vented
- 10' Width Clearance
- 5" Heavy Pipe Frame
- Easy Slide Gate System
- Large Top Doors
- Double Primer Coatings
- Epoxy Inside Liner

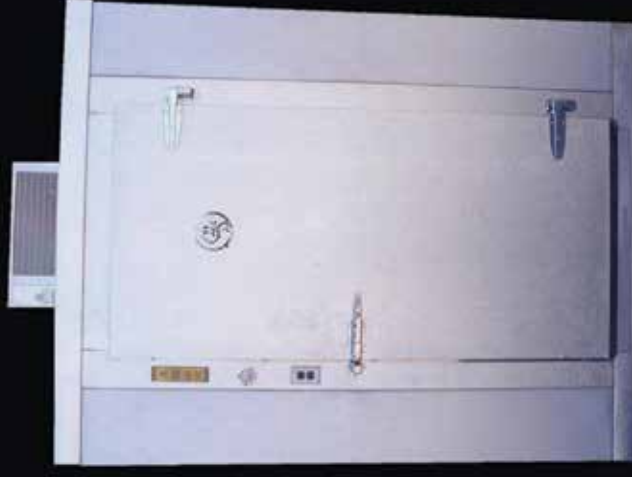
COOLERS



6' x 6' - Cooler Wagon
(also available in 6' x 8')



6' x 6' - Walk-In Cooler
(also available in 6' x 8')



6' x 8' - Walk-In Cooler
(also available in 6' x 6')

QUIK FEED TRAILERS

The Quik Feed System® by AWS is an air driven system with no augers or conveyors that will damage feed. At up to 500lbs per minute, the Quik Feed® is the fastest system in the industry. The Quik Feed® has a standard 25' flexible meter hose that allows the user to move freely in the field without opening feed pen gates for access to feeders. Also standard is a Honda

engine with electric start. AWS manufactures bumper pull and gooseneck models in 2-10 ton capacities. Skid mount models are also available in 1.5 and 2 ton capacities. All models feature heavy torsion axles, channel frames and 10 gauge construction. For onboard weight, a digital scale system can be added. The AWS Quik Feed® is built to last a lifetime.



1.5 Ton Skid Mount Quik Feed®



2 Ton Quik Feed®



6 Ton Gooseneck Quik Feed®



4 Ton Quik Feed®

QUIK FEED TRAILERS



4 Ton Quik Feed®



3 Ton Quik Feed®



5 Ton Gooseneck Quik Feed®



10 Ton Gooseneck Quik Feed®