

Coalition for a Healthy Oldham County Community Health Needs Assessment and Community Health Improvement Plan 2022-2025



Serving the Citizens of Oldham County, Kentucky

The Coalition for a Healthy Oldham County's vision is to create and sustain an engaged community where individuals have the ability to pursue a safe, healthy and independent lifestyle including opportunities for recreation and freedom from substance abuse.

<http://www.coalitionforahealthyoc.com/>

Table of Contents

Letter from the Community Assessment Team	3
Community Health Assessment Process.....	4
Methodology	4
Vision Statement.....	4
Organizing Community Partners	5
Community Health Status Assessment	6
Community Themes and Strengths Assessment.....	7
Forces of Change Assessment	8
Local Public Health System Assessment.....	9
Strategic Issue Identification/Goals and Objectives	10
HOC Strategic Initiatives	12
Appendix 1: Oldham County Community Health Survey	15
Appendix 2: Local Public Health System Assessment.....	19

Letter from the Community Assessment Team

The Coalition for Healthy Oldham County was established in February 2011 to form community partnerships that would address the health and safety of our community. The Coalition is supported by the Oldham County Health Department, who originally organized for success through developing partnerships, but depends on the strength of these partnerships to complete the public health system. These dedicated partnerships consist of committed citizens from a cross section of disciplines. The coalition decided to follow the community health improvement planning model developed by the National Association of County and City Health Officials (NACCHO) called MAPP (Mobilizing for Action through Planning and Partnerships). Simply stated, the coalition wanted to assess the community's needs before implementing an improvement plan.

Our partners were dedicated to completing a broad range of assessments and developing a “real-time snapshot” of our county's health and safety status. Our Community Health Assessment (CHA) not only provides a picture of the current health status of our community, but it also leads us to interventions for improving the health and safety of our residents. These improvements are a direct result of the collaboration of many dedicated people. This process was repeated in 2015, 2018 and again in 2021 to assess the current needs of the community. After developing a vision statement, the coalition began working on each of the four MAPP assessments. Analyzing the data from these assessments facilitated many conversations which led to developing long-term strategic initiatives. These initiatives contain detailed goals and objectives focused on the most significant health issues in our community. By prioritizing these goals, our partnerships can coordinate and properly allocate funds where they will have the most impact.

We welcome your feedback to our Community Health Assessment and Improvement Plan, and encourage you to learn more about the Coalition for a Healthy Oldham County's partnerships. Please visit our website at: www.coalitionforahealthyoc.com/

Sincerely,
Your Community Assessment Team

Community Health Assessment Process

Methodology

The Coalition for a Healthy Oldham County utilized a community health assessment process based on Mobilizing for Action through Planning and Partnerships (MAPP). MAPP is a community-driven strategic planning process which helps communities apply strategic thinking to prioritize public health issues and identify resources to address them. MAPP is not an agency-focused assessment process; rather, it is an interactive process that can improve the efficiency, effectiveness, and ultimately the performance of local public health systems. The assessments used in the MAPP process include Community Health Status Assessment, Community Themes and Strengths Assessment, Forces of Change Assessment, and the Local Public Health System Assessment.



Vision Statement

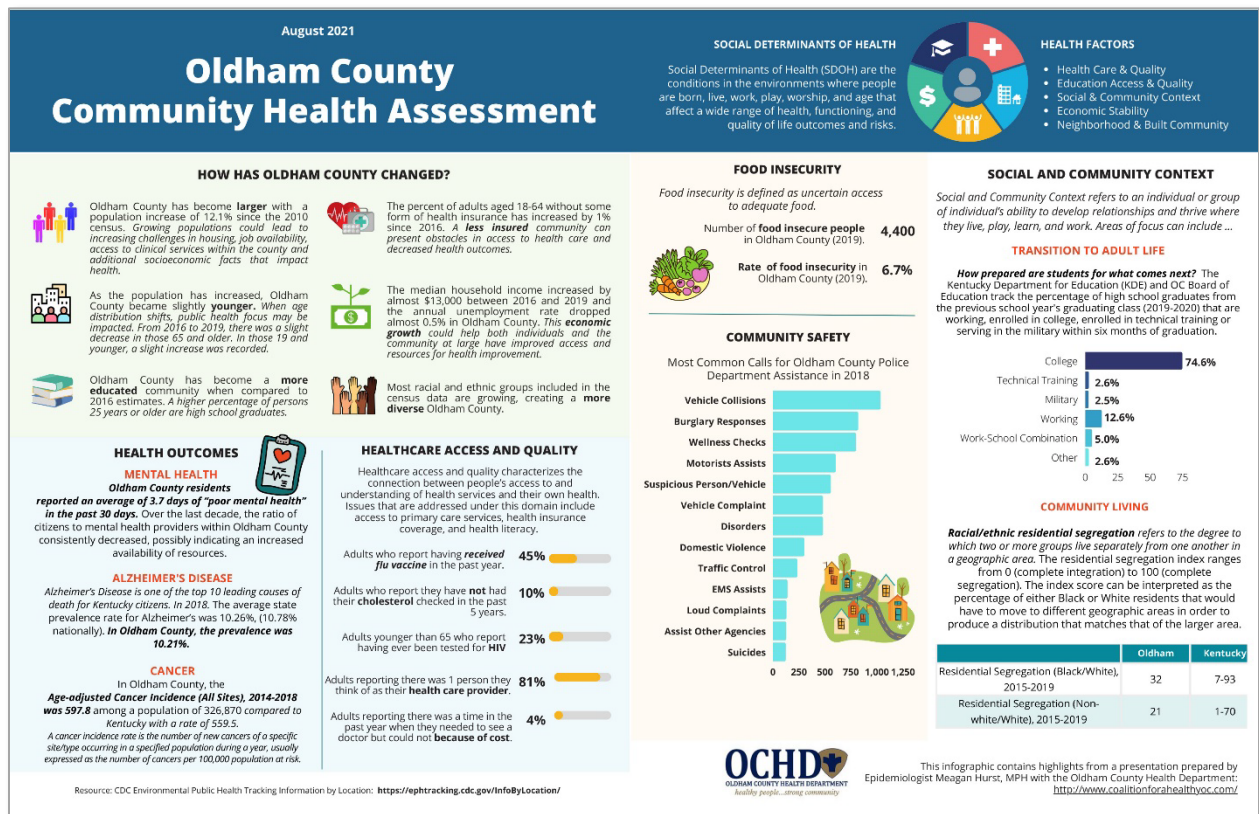
The Coalition for a Healthy Oldham County's vision is to create and sustain an engaged community where individuals have the ability to pursue a safe, healthy and independent lifestyle including opportunities for recreation and freedom from substance abuse.

Organizing Community Partners (2021)

Anthem Medicaid
Baptist Health LaGrange
Bluegrass Family Wellness
CareSource
Community Counselors
Community Members, including parents and youth
Hope Collaborative
Hosparus Health
KIPDA
KY Cancer Program
KY Career Center
KY One Health/ Our Lady of Peace
LaGrange Police Department
Local Businesses
Metro United Way
Oldham County Board of Education
Oldham County Board of Health
Oldham County Chamber of Commerce
Oldham County Fiscal Court
Oldham County Health Department
Oldham County Police Department
Oldham County Public Library
Oldham Era
Operation Parent
OVEC Head Start
Passport Health Plan
Pharmacy Representative
Seven Counties Services
Tri County Community Action Agency
University of Kentucky Cooperative Extension Service
Volunteers of America
WellCare Health Plans
Youth Linking Oldham County (YLOC)

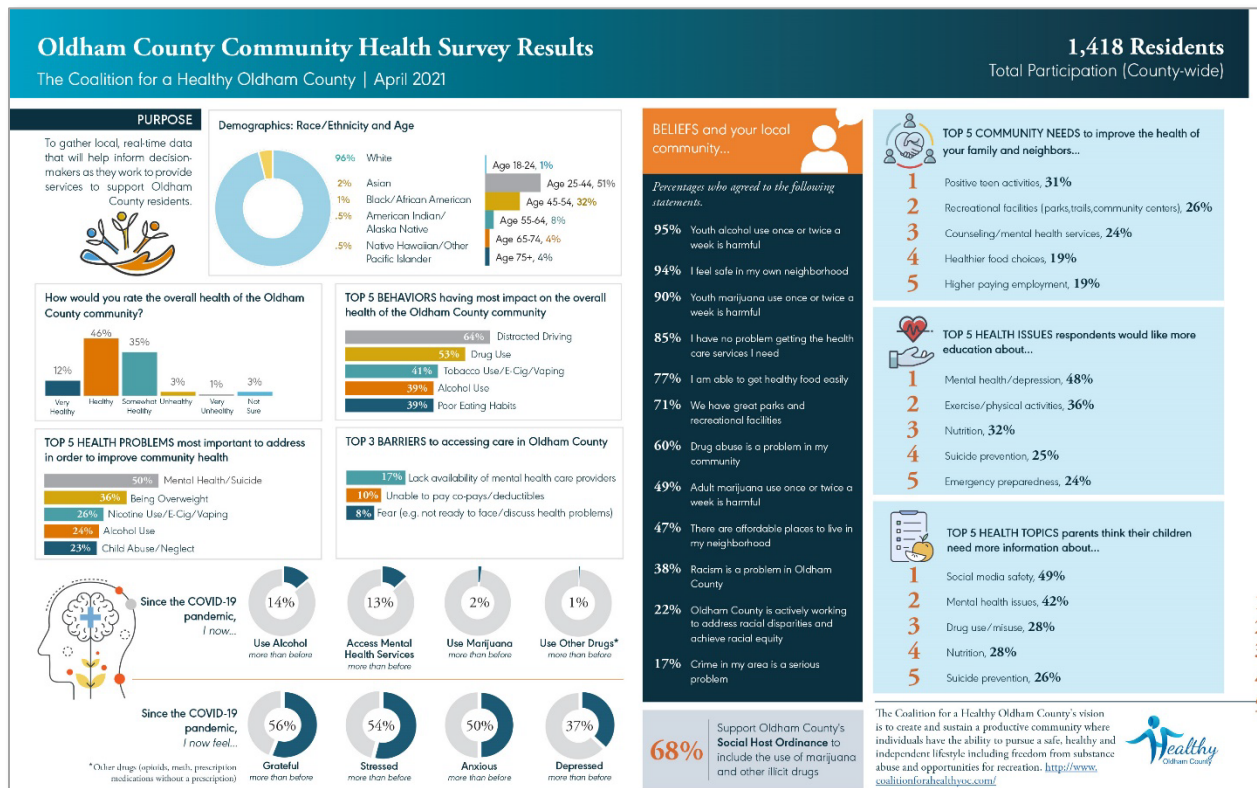
Community Health Status Assessment: August 2021

The Community Health Status Assessment occurred in August 2021 and the infographic below contains highlights including: Community changes, health outcomes, healthcare access, community safety, food insecurity and social and community context.



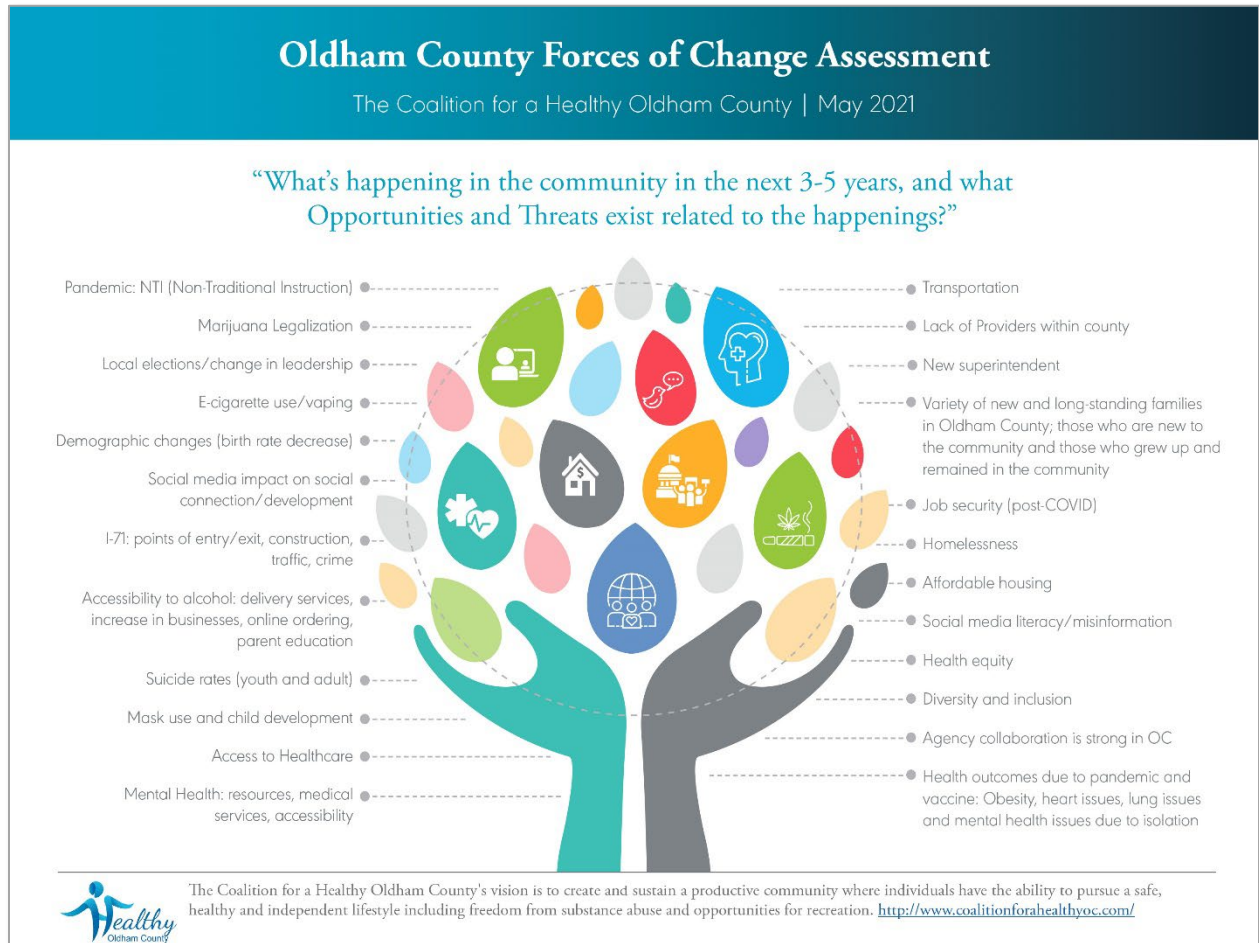
Community Themes and Strengths Assessment

1,418 Oldham County residents at least eighteen years old completed the Oldham County Community Health Survey; this is more than double the number of responses from previous survey implementations. The survey was distributed at a variety of public locations and special events in both electronic and paper format in the Spring of 2021. See Appendix 1 for the survey tool. The infographic below contains the results including: Demographics, community health, access to care, community beliefs, and mental health related to COVID-19.



Forces of Change Assessment

To carry out the ‘Forces of Change’ assessment, a facilitated discussion was held in May 2021 with members of the Coalition for a Healthy Oldham County. Participants responded to the question, “*What is happening in the Oldham County community in the next 3-5 years, and what Opportunities and Threats exist related to the happenings?*” The infographic below depicts the collected responses.



Local Public Health System Assessment

See appendix for our Local Public Health System Assessment using this approach.

As part of the community needs assessment process to inform Oldham County’s three-year Community Improvement Plan, the Coalition for a Healthy Oldham County conducted a Local Public Health Needs Assessment with coalition members, Health Department staff, and key individuals from the community. Due to Covid, the assessment was conducted via a web-based format prior to the Community Forum conducted virtually on September 23, 2021, with 50 community partners in attendance.

In order to refine the Community Improvement Plan, one of the steps is to assess the local public health system in Oldham County by asking the following questions: (1) What are the components, activities, competencies, and capacities of our local public health system, and 2) How are Essential Services being provided to our community? To assess Oldham County’s public health system, participants were asked to identify organizations that are involved in providing the following ten ‘Essential Services’ in Oldham County:

1. Monitor health status to identify community health problems
2. Inform, educate, and empower people about health issues
3. Mobilize community partnerships to identify and solve health problems
4. Inform, educate, and empower people about health issues
5. Develop policies and plans that support individual and community health efforts
6. Enforce laws and regulations that protect health and ensure safety
7. Link people to needed personal health services and assure the provision of health care when otherwise unavailable
8. Assure a competent public health and personal health care workforce.
9. Evaluate effectiveness, accessibility, and quality of personal and population-based health services
10. Research for new insights and innovative solutions to health problems



This updated asset map of Oldham County’s public health system programs and services serves to both a) identify resources that can contribute toward goals identified during strategic planning, and b) identify existing systemic gaps and barriers that require attention.

Strategic Issue Identification/Goals and Objectives

Strategic Initiative #1: Substance Use Prevention

1. Develop and implement strategic education campaign to address behavior changes and consequences associated with substance use (both illicit and non-illicit.)
2. Advocate for the development and implementation of policies related to the substance(s) with highest usage among youth in Oldham
3. Develop and implement a strategic education campaign to address positive/effective strategies for coping (as a means to prevent substance use.)

Strategic Initiative #2: Mental Health

1. Develop and implement a media plan to increase general community awareness of behavioral health issues.
2. Expand health services to address co-occurring issues.
3. Decrease barriers to treatment by increasing accessibility of transportation.
4. Expand non-traditional/alternative resources to prevent and address mental health issues.
5. Develop a mental health library; compile and disseminate local resources.
6. Develop a strategic education campaign to decrease stigma and normalize mental health support and treatment.
7. Decrease barriers to service access by making mental health services readily available in connection with other vital services already provided (i.e., 'meet folks where they are.')

Strategic Initiative #3: Physical Health

1. Expand accessibility to walking paths, bike lanes, exercise opportunities. (E.g., advocate for policies supporting sidewalk development to encourage healthy lifestyles.
2. Increase services/accessibility to dietician/nutrition services at an affordable or no-cost option. Additionally, improving transportation, delivery services, or accessibility to healthy food options in rural areas of the county during inclement weather seasons. Expand food market programming and 'pop up' produce markets.
3. Increase awareness and education among adults, parents, guardians, etc. regarding mentoring of healthy behaviors. Address limited transportation opportunities and concern about COVID transmission.
4. Address physical health needs of the increasing number of senior caregivers raising grandchildren.
5. Mobilize preventative care services.

Strategic Initiative #4: Education

1. Increase community awareness of preventative measures including screenings, healthy foods, physical activities, vaccine acceptance, and inclusivity/equity.
2. Bring multiple voices (organizations/agencies/people) together to collectively promote prevention with trusted voices.
3. Work to make healthcare services in Oldham County inclusive and accessible for citizens of all gender/racial/ethnic/ability, etc. status.

Strategic Initiative #5: Environmental Factors

1. Develop and implement a strategic campaign to increase messaging and communication related to the impacts of distracted driving.
2. Convene community partners to explicitly frame the issue of food insecurity (steps would include: # of persons served, identify redundant services, and identify novel solutions driven by end users.)
3. Identify effective solutions via Planning Commission to ensure affordable housing while preserving community and limiting congestion.

HOC Strategic Initiatives

These objectives were reviewed and finalized by the Board of Directors on May 25, 2022.

#1 *Reduce Substance Abuse and Related Consequences in Oldham County*

Objective 1: Include marijuana and other drugs in the current Social Host Ordinance by December 31, 2023 as measured by Oldham County Fiscal Court Policy review.
Activity(ies): develop core team to address, coordinate with YLOC, develop policymaker assessment/information, present to/meet with policymakers

Objective 2: Decrease by 10% the number of youth reporting 30 day use of alcohol by July 1, 2024 as measured by the KIP Student Survey.

Objective 3: Decrease by 10% the number of youth reporting 30 day use of marijuana by July 1, 2024 as measured by the KIP Student Survey.

Objective 4: Decrease by 10% the number of youth reporting 30 day use of e-cigs by July 1, 2024 as measured by the KIP Student Survey.

Activity(ies): Promote Sources of Strength, Social Norms Marketing Campaign, Coping Strategies, Family Town Hall, promote The Dinner Table Project, VIP Campaign, Social Media Campaigns, offer alternative to suspension ATOD (including) electronic cigarette classes

Objective 5: Increase by 3% the number of adults reporting adult use of marijuana once or twice a week is harmful by July 1, 2024 as measured by the HOC Community Survey.

Activity(ies): See Communication Plan

Objective 6: Ensure implementation of the KIP Student Survey every other year through 2031.

#2 *Create a Community Culture that Supports Mental Health*

Objective 1: Develop and disseminate at least 24 messages among 3 media platforms by December 31, 2022 targeting mental health stigma, access to mental health resources and strategies for coping.

Activity(ies): develop core team, identify messages/target audiences, identify platforms, develop messages, disseminate messages, Sources of Strength in the Community

Objective 2: Identify and promote two non-traditional/alternative resources to prevent and address mental health services by December 30, 2023.

Objective 3: Collaborate with three community partners to host “little libraries” with mental health resources onsite by June 30, 2023.

Activity(ies): Identify places to “meet people where they are,” develop a limited resource library with mental health information, include QR code for online resource guide with library materials.

#3 *Provide Options and Opportunities to Improve the Physical Health of all Oldham County Residents*

Objective 1: By September 30, 2022, increase participation in the County Challenge Walk by 10% of steps.

Objective 2: Host 2 community events to provide diabetes education by December 30, 2023.

Objective 3: Develop a senior adult advisory council with at least 5 members by June 30, 2023.

Activity(ies): Invite senior audiences to OCHD/partner agencies for outreach re: Medicaid changes, community resources, etc.; coordinate speaking engagements with senior adult-serving organizations, advertise on local pharmacy medication bags, direct mail materials.

Objective 4: Implement a food/goods drive for Coalition by June 30, 2022 for distribution to local food pantries.

Objective 5: Explore WIC benefits acceptance at the local Farmer's Market by April 1, 2023.

#4 *Enhance Educational and Health-related Literacy Among Oldham County Residents*

Objective 1: One member from HOC will participate in the Early Childhood Council regular meetings through June 30, 2023.

Objective 2: The Early Childhood Council will present once per year at a regular HOC meeting through June 30, 2023.

#5 *Reduce Environmental Factors Associated with Adverse Health Outcomes*

Objective 1: Successfully advocate for enhanced penalties for distracted driving by June 30, 2024 as measured by review of local and state regulations.

Objective 2: Identify and share the needs of two local food pantries three times per year through June 30, 2023.

Objective 3: Implement a community survey related to housing insecurity in collaboration with Good News Homes and the KCOUNTS Survey by June 30, 2024.

Objective 4: Host a member of the Oldham County Planning Commission at a Coalition for a Healthy Oldham County monthly meeting to discuss housing insecurity by June 30, 2022.

#6 *Implement a Collaborative Communication Plan to Promote Resources and Provide Education*

Objective 1: Develop and disseminate an online and physical resource guide by May 1, 2023.

Activity(ies): identify mental health resources, identify/promote programs that offer solutions to barriers (i.e. transportation/gas cards, etc), coordinate with Chamber of Commerce, churches, United Communities, Louie Connect)

- Objective 2: Increase traffic to www.coalitionforahealthyoldhamcounty.com and HOC's Facebook page by 30% by December 31, 2022.
- Objective 3: Create a Speaker's Bureau consisting of 10 Coalition members to engage in 10 speaking engagements by June 30, 2023.
- Objective 4: Increase by 10% the number of Oldham County service providers participating in Louie Connect by May 1, 2023.
- Objective 5: Increase by 2 the number of Oldham County community organizations utilizing Unite Us by December 30, 2022.
- Objective 6: Develop a 1-year strategic communication plan by June 1, 2022 that addresses the following:
- Mental Health Access, Stigma, Resources
 - Marijuana Effects/Legalization Issues
 - Adult Mentoring of Healthy Behaviors
 - Preventative Measures
 - Distracted Driving
 - Healthy Eating
 - Physical Activity
 - Inclusivity
 - Resource Guide Dissemination
- Objective 7: Publicize factual information from trusted, reliable sources twice per month on social media and through the HOC website through June 30, 2023.

Appendix 1: Oldham County Community Health Survey



OLDHAM COUNTY COMMUNITY HEALTH SURVEY

Your opinion is important! If you are a resident of Oldham County and at least 18 years old, please take a few minutes to complete the survey using this form, or go online to complete the survey at [Oldham County Health Survey](#). Enter your phone number at the end of the survey for a chance to win one of many \$50 gift certificates. **Please complete the survey by April 16th.**

The purpose of this survey is to get your opinion about community health issues in Oldham County. The Coalition for a Healthy Oldham County will use the results of this survey and other information to identify the most pressing problems which can be addressed through community action. Remember... your opinion is important! If you have any questions, please contact us (see contact information on back). Thank you!

1. Overall, how would you rate the health of the Oldham County Community? Please choose only one (1) response.

Very Healthy	Healthy	Somewhat Healthy	Unhealthy	Very Unhealthy	Not Sure
<input type="radio"/>	<input type="radio"/>	<input type="radio"/>	<input type="radio"/>	<input type="radio"/>	<input type="radio"/>

2. Please read the list of risky behaviors below. Which of these do you believe are the most harmful to the overall health of the Oldham County community? Please choose only three (3), using 1, 2 and 3.

	Your Top 3	Example
Alcohol abuse		
Drug abuse		1
Lack of exercise		
Poor eating habits		
Not wearing helmets		
Not using seat belts/not using child safety seats		3
Tobacco use/E-cigarettes/Vaping		2
Distracted driving (texting, eating, talking on phone)		
Not locking up guns		

3. Please read the below list of health problems and think about your community. Which of these do you believe are most important to address in order to improve the health of our community? Please choose only three (3), using 1, 2 and 3.

	Your Top 3	Example
Aging Problems (e.g., difficulty getting around, dementia, arthritis)		
Cancers		
Child Abuse/Neglect		1
Clean Environment/Air & Water Quality		
Dental Problems		
Diabetes/High Blood Sugar		
Domestic Violence/Rape/Sexual Assault		
Gun-Related Injuries		3
Being Overweight		2
Mental Health Problems Including Suicide		
Heart Disease/Stroke/High Blood Pressure		
HIV/AIDS/Sexually Transmitted Diseases (STDs)		
Homicide		
Infectious Diseases like Hepatitis, TB and COVID-19		
Motor Vehicle Crash Injuries		
Infant Death		
Respiratory/Lung Disease		
Teenage Pregnancy		
Alcohol Use/Misuse		
Nicotine Use/E-cigarettes/Vaping		

4. Below are some statements about your beliefs and your local community. Please tell us if you agree or disagree with each statement.

	Agree	Disagree	Not Sure
Drug abuse is a problem in my community.	<input type="checkbox"/>	<input type="checkbox"/>	<input type="checkbox"/>
I have no problem getting the health care services I need.	<input type="checkbox"/>	<input type="checkbox"/>	<input type="checkbox"/>
We have great parks and recreational facilities.	<input type="checkbox"/>	<input type="checkbox"/>	<input type="checkbox"/>
Public transportation is easy to get to if I need it.	<input type="checkbox"/>	<input type="checkbox"/>	<input type="checkbox"/>
There are plenty of jobs available.	<input type="checkbox"/>	<input type="checkbox"/>	<input type="checkbox"/>
Crime in my area is a serious problem.	<input type="checkbox"/>	<input type="checkbox"/>	<input type="checkbox"/>
Racism is a problem in Oldham County.	<input type="checkbox"/>	<input type="checkbox"/>	<input type="checkbox"/>
Oldham County is actively working to address racial disparities and achieve racial equity.	<input type="checkbox"/>	<input type="checkbox"/>	<input type="checkbox"/>
Air pollution is a problem in my community.	<input type="checkbox"/>	<input type="checkbox"/>	<input type="checkbox"/>
I feel safe in my own neighborhood.	<input type="checkbox"/>	<input type="checkbox"/>	<input type="checkbox"/>
There are affordable places to live in my neighborhood.	<input type="checkbox"/>	<input type="checkbox"/>	<input type="checkbox"/>
The quality of health care is good in my neighborhood.	<input type="checkbox"/>	<input type="checkbox"/>	<input type="checkbox"/>
There are good sidewalks for walking safely.	<input type="checkbox"/>	<input type="checkbox"/>	<input type="checkbox"/>
I am able to get healthy food easily.	<input type="checkbox"/>	<input type="checkbox"/>	<input type="checkbox"/>
Vaping regularly is harmful.	<input type="checkbox"/>	<input type="checkbox"/>	<input type="checkbox"/>
Adult marijuana use once or twice a week is harmful.	<input type="checkbox"/>	<input type="checkbox"/>	<input type="checkbox"/>
Youth marijuana use once or twice a week is harmful.	<input type="checkbox"/>	<input type="checkbox"/>	<input type="checkbox"/>
Youth alcohol use once or twice a week is harmful.	<input type="checkbox"/>	<input type="checkbox"/>	<input type="checkbox"/>

5. What is needed in our community to improve the health of your family and neighbors? Please choose the top three (3).

- | | | |
|---|---|---|
| <input type="checkbox"/> Job opportunities | <input type="checkbox"/> Elder care options | <input type="checkbox"/> Road safety |
| <input type="checkbox"/> Higher paying employment | <input type="checkbox"/> Services for disabled people | <input type="checkbox"/> Transportation options |
| <input type="checkbox"/> Affordable housing | <input type="checkbox"/> Number of health care providers | <input type="checkbox"/> Road maintenance |
| <input type="checkbox"/> Counseling/mental health services | <input type="checkbox"/> Wellness services | <input type="checkbox"/> Animal control |
| <input type="checkbox"/> Recreational facilities (parks, trails, community centers, etc.) | <input type="checkbox"/> Substance use prevention services | <input type="checkbox"/> Safe places to walk/play |
| <input type="checkbox"/> Healthier food choices | <input type="checkbox"/> Culturally appropriate health services | <input type="checkbox"/> Other, please specify: |
| <input type="checkbox"/> Healthy family activities | <input type="checkbox"/> More affordable health services | _____ |
| <input type="checkbox"/> Positive teen activities | <input type="checkbox"/> Speciality physicians | _____ |
| <input type="checkbox"/> Child care options | <input type="checkbox"/> Free or affordable health screenings | _____ |
| | <input type="checkbox"/> Substance use rehabilitation services | |

6. What health issues would you like more education about? Please choose up to five (5).

- | | | |
|--|--|--|
| <input type="checkbox"/> Blood pressure | <input type="checkbox"/> Emergency preparedness | <input type="checkbox"/> Prenatal care |
| <input type="checkbox"/> Cancer | <input type="checkbox"/> Exercise/physical activity | <input type="checkbox"/> Suicide prevention |
| <input type="checkbox"/> Cholesterol | <input type="checkbox"/> Falls prevention in the elderly | <input type="checkbox"/> Vaccination/immunizations |
| <input type="checkbox"/> Dental screenings | <input type="checkbox"/> Heart disease | <input type="checkbox"/> Quitting smoking |
| <input type="checkbox"/> Diabetes | <input type="checkbox"/> HIV/AIDS & STDs | <input type="checkbox"/> Other, please specify: |
| <input type="checkbox"/> Disease outbreak prevention | <input type="checkbox"/> Routine well checkups | _____ |
| <input type="checkbox"/> Drug alcohol use/misuse | <input type="checkbox"/> Mental health/depression | _____ |
| <input type="checkbox"/> Eating disorders | <input type="checkbox"/> Nutrition | _____ |

7. Are there any issues that prevent you from accessing care in Oldham County? [Check all that apply.](#)

- | | | |
|---|---|--|
| <input type="checkbox"/> Cultural/religious beliefs | <input type="checkbox"/> Language barriers | <input type="checkbox"/> Other, please specify:
_____ |
| <input type="checkbox"/> Don't know how to find doctors | <input type="checkbox"/> No insurance and unable to pay for
the care | _____ |
| <input type="checkbox"/> Fear (e.g., not ready to face/discuss
health problem) | <input type="checkbox"/> Unable to pay co-pays/deductibles | _____ |
| <input type="checkbox"/> Lack of availability of mental health
care providers | <input type="checkbox"/> Transportation | |

8. Do you have children between the ages of 9 and 19 for which you are the caretaker? (includes step-children, grandchildren, or other relatives.)

- Yes No

9. If you answered yes to the previous question, which of the following health topics do you think your child/children need(s) more information about? [Check all that apply.](#)

- | | | |
|---|---|--|
| <input type="checkbox"/> Dental hygiene | <input type="checkbox"/> Social media safety | <input type="checkbox"/> Drug Use/Misuse |
| <input type="checkbox"/> Alcohol | <input type="checkbox"/> Mental health issues | <input type="checkbox"/> Other, please specify:
_____ |
| <input type="checkbox"/> Nicotine use/e-cigarettes/vaping | <input type="checkbox"/> Eating disorders | _____ |
| <input type="checkbox"/> Reckless driving/speeding | <input type="checkbox"/> Dating Violence | _____ |
| <input type="checkbox"/> Safe Sex | <input type="checkbox"/> Nutrition | |
| <input type="checkbox"/> STDs | <input type="checkbox"/> Suicide prevention | |

10. During COVID-19, how have you most often purchased alcohol? [Please choose only one \(1\) response.](#)

- In-person inside a store
 In your automobile via curbside pick-up or drive-thru
 Had it delivered to your home via grocery delivery service
 I have not purchased alcohol during the pandemic

11. Since the COVID-19 pandemic began, I now:

	About the same as before	Less than before	More than before	No use/not applicable
Use alcohol	<input type="radio"/>	<input type="radio"/>	<input type="radio"/>	<input type="radio"/>
Use marijuana	<input type="radio"/>	<input type="radio"/>	<input type="radio"/>	<input type="radio"/>
Use other drugs (opioids, meth, prescription medications without a prescription)	<input type="radio"/>	<input type="radio"/>	<input type="radio"/>	<input type="radio"/>
Access mental health services	<input type="radio"/>	<input type="radio"/>	<input type="radio"/>	<input type="radio"/>

12. Compared to the time before COVID-19, do you now feel:

	Less than before	About the same	More than before
Stressed	<input type="radio"/>	<input type="radio"/>	<input type="radio"/>
Depressed	<input type="radio"/>	<input type="radio"/>	<input type="radio"/>
Anxious	<input type="radio"/>	<input type="radio"/>	<input type="radio"/>
Grateful	<input type="radio"/>	<input type="radio"/>	<input type="radio"/>

13. A 'social host' is anyone who knowingly hosts or allows underage drinking at parties on property that they own, lease or otherwise control. A Social Host Ordinance holds adults criminally responsible for any underage drinking occurring on their property.

Are you in support of adjusting Oldham County's existing Social Host Ordinance to include the use of marijuana and other illicit drugs?

Yes No

14. **What else would like to tell us about community concerns, health problems or services in Oldham County?**

15. **Zip Code where you live:** _____

16. **Are you of Hispanic, Latino, or of Spanish origin?**

Yes No

17. **How would you describe yourself?:**

American Indian or Alaska Native Asian Black or African American Native Hawaiian or Other Pacific Islander White

18. **Age:**

18-24 25-44 45-54 55-64 65-74 75+

19. **Education:**

High School GED Some College Associate's Degree College Degree Graduate Degree

20. **Household income:**

\$0 \$1-19,999 \$20,000-\$39,999 \$40,000-\$59,999 \$60,000-\$79,999 \$80,000-\$99,999 \$100,000+

21. **Please write your phone number OR email address here for a chance to win one of many \$50 gift certificates. Your phone number will not be linked to your responses or used for any further communication:**

If you would like more information about this community project, please contact us at the number below:

Anna Hobbs
Coalition for a Healthy Oldham County
Oldham County Health Department
1786 Commerce Parkway
LaGrange, KY 40031
502-222-3516 x140

Appendix 2: Local Public Health System Assessment

Organizations in Oldham County that provide all 10 Essential Services

Organization	Number of Mentions
Oldham County Health Department and local healthcare systems, doctors, RN's	122
Baptist Health LaGrange	40
Oldham County EMS/Police/Fire Departments	27
Hope Health Clinic	16
Coalition for a Healthy Oldham County	13
Oldham County Schools	12
Tri-County Community Action Agency	6
Oldham County Public Library	5
American Red Cross	6
Anthem, Passport, Other Insurance companies	4
Fiscal Court	4
Crossroads	3
Metro United Way	3
Oldham County Government	3
PCP offices	3
Highpoint	2
Mental Health Agencies (specific to mental health issues)	2
Oldham County Cooperative Extension Service	2
OCBE	2
Long Term Care Facilities	1
Newspaper	1
Norton Associates	1
Oldham County Dispatch (overdoses, etc.)	1
Oldham County Extension Office	1
Operation parent	1
Seven Counties	1
Targeted Case Management agencies	1
UK extension	1
Urgent cares	1

Organizations in Oldham County that monitor health status to identify and solve community health problems

Organization	Number of Mentions
Baptist Health LaGrange	4
Emergency management	1
Extension Office	1
HOC- community partners	2
Hope Health Clinic	2
Insurance carriers	1
Norton Associates	1
Oldham County Dispatch (overdoses, etc.)	1
Oldham County Schools	3
Oldham County EMS/Police/Fire Departments	1
Oldham County Health Department	14
TCCAA	1

Organizations in Oldham County that diagnose and investigate health problems and health hazards in the community

Organization	Number of Mentions
Baptist Health LaGrange	6
Coalition for a Healthy Oldham County	2
Emergency Management- First responders	1
Hope Health Clinic	3
Hospital	1
Local healthcare systems	1
Mental Health Agencies (specific to mental health issues)	1
Oldham County Police	1
Oldham County Schools	1
Oldham County EMS/Police/Fire Departments	1
Oldham County Health Department	12
Oldham County Pediatrics	1
Primary care offices	1

Organizations in Oldham County that inform, educate, and empower people about health issues

Organization	Number of Mentions
American Red Cross	2
Anthem, Passport, Other Insurance companies	1
Baptist Health LaGrange	3
Coalition for a Healthy Oldham County	2
Crossroads	1
Fiscal Court- TV Channel	1
Hope Health	1
Hospital	1
Individual practitioners	1
Insurance companies	1
Library	1
Mental Health agencies (specific to mental health issues)	1
Newspaper	1
Oldham County Library	1
Oldham County Schools	1
Oldham County Cooperative Extension Service	1
Oldham County EMS/Police/Fire Departments	1
Oldham County Health Department	14
Oldham County Health Department and local healthcare systems, doctors, RN's	1
Oldham County Schools	1
PCP offices	1
TCCAA	1
UK extension	1

Organizations in Oldham County that mobilize community partnerships and action to identify and solve health problems

Organization	Number of Mentions
American Red Cross	1
Baptist Health LaGrange	2
Coalition for a Healthy Oldham County	3
Crossroads	1
Fiscal Court	1
Health Department (specifically HOC and the members of that coalition)	1
Highpoint	1
Hospital	1
Metro United Way	1
Oldham County Extension Office	1
Oldham County Library	1
OCBE	1
Oldham County EMS/Police/Fire Departments	1
Oldham County Health Department	1
Oldham County Health Department via HOC partners	1
Oldham County Health Department	7
Oldham County Public Library	1
Oldham County Schools	1

Organizations in Oldham County that develop policies and plans that support individual and community health efforts

Organization	Number of Mentions
American Red Cross	1
Baptist Health LaGrange	2
Coalition for a Healthy Oldham County	1
County Government	1
EMS	1
Fiscal Court	1
Hope Health	1
Hospital	1
Oldham County Schools	1
OCBE	1
Oldham County EMS/Police/Fire Departments	1
Oldham County Health Department	12
Oldham County Schools	1

Organizations in Oldham County that enforce laws and regulations that protect health and ensure safety

Organization	Number of Mentions
Baptist Health LaGrange	1
County Government -	1
County Police	1
Fire Departments	2
First Responders- police and fire	1
Fiscal Court	1
Hospital	1
Local Hospitals/Doctors Offices	1
Oldham County Schools	1
Oldham County EMS/Police/Fire Departments	1
Oldham County Health Department	11
Oldham County Police and Sheriff	9

Organizations in Oldham County that link people to needed personal health services and assure the provision of health care when otherwise available

Organization	Number of Mentions
American Red Cross	1
Baptist Health LaGrange	3
Crossroads	1
Highpoint	1
Hope Health Clinic	8
Hospital	1
Oldham County EMS/Police/Fire Departments	1
Oldham County Health Department	12
Oldham County Schools	1
PCP offices	1
Seven Counties	1
Targeted Case Management agencies	1
Tri-County Community Action Agency	2

Organizations in Oldham County that assure competent public and personal health care workforce

Organization	Number of Mentions
Baptist Health LaGrange	4
Hope Health Clinic	1
Hospital	1
Long Term Care Facilities	1
Oldham County Schools	1
Oldham County EMS/Police/Fire Departments	1
Oldham County Health Department	12
TCCAA	1

Organizations in Oldham County that evaluate effectiveness, accessibility, and quality of personal and population-based health services

Organization	Number of Mentions
American Red Cross	1
Baptist Health LaGrange	3
Hospital	1
Metro United Way	1
Oldham County Government	1
Oldham County EMS/Police/Fire Departments	1
Oldham County Health Department	11
PCP offices	1
TCCAA	1
Urgent cares	1

Organizations in Oldham County that research for new insights and innovative solutions to health problems

Organization	Number of Mentions
Baptist Health LaGrange	3
Coalition for a Healthy Oldham County	2
Health Insurance providers	1
Hospital	1
Metro United Way	1
Oldham County Library	1
Oldham County EMS/Police/Fire Departments	1
Oldham County Health Department	9
Operation parent	1