



Sleek, Modern,  
& Innovative



Easy to Install  
& Remove



Fully Customizable  
& Reusable

## McCain Walls™ Systems

*McCain Walls* modular systems are a modern, sleek solution for temporary barricades made from 100% recyclable aluminum. Designed to accommodate any job site specification, *McCain Walls* systems are available in various heights and the versatile panels can be easily reconfigured to any length. *McCain Walls* systems are ideal for short and long-term applications, as well as for multi-phase projects.

### Features & Benefits

**Hassle-free Installation.** Accelerate project schedules by easily installing and removing *McCain Walls* systems at a fraction of the time it takes to do the same with traditional drywall barricades.

**Customizable System.** Reconfigure and reuse *McCain Walls* systems during multi-phase projects, eliminating waste from traditional temporary walls.

**Multiple Options.** Make adjustments to a *McCain Walls* system with versatile wall panels, mounting options, and single or double door modules.

**Smooth, Clean Finishes.** Increase customer satisfaction with an aesthetically appealing *McCain Walls* system. Panels are powder coated in white. Antimicrobial and anti-graffiti coatings are optional.

**Environmentally-friendly Design.** Eliminate tons of drywall debris and avoid landfill disposal fees with *McCain Walls* reusable and recyclable systems.

### Ideal Applications

*McCain Walls* temporary systems are ideal across all industries for new construction and remodel projects:

- Airports
- Casinos
- Construction Firms
- Conventions Centers
- Government
- Hospitals
- Hotels
- Offices
- Restaurants
- Shopping Centers
- Universities

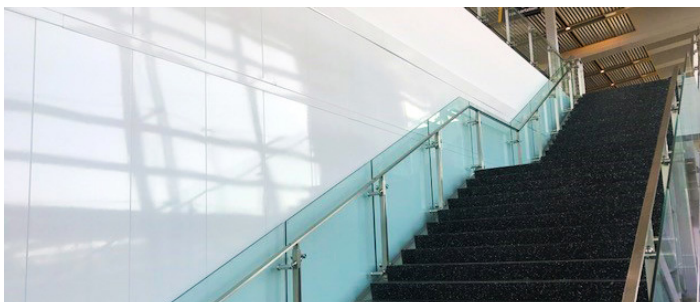
# System Configuration Options & General Specifications



McCain Walls system with single-door access, UC San Diego Hospital.



200' McCain Walls system, Aria Hotel & Casino in Las Vegas.



450' McCain Walls System, San Diego International Airport.



Increase brand awareness with graphics-ready walls.

## System Configuration Options

- Aluminum panels with multiple height options
- Single or double door kits
- Windows
- Custom door locks, including cipher locks
- Interchangeable lockset core for keyed-alike applications
- Hospital-grade, antimicrobial powder coating
- Anti-graffiti powder coating
- Sound attenuation

## General Specifications

Panels	Various heights and widths available: Height: 96", 120", 144" Width: 6", 12", 24"
Corner Panels	Various heights available: Height: 96", 120", 144" Width: 6"
Fasteners	Bracing plates, channel support brackets, corner brackets, panel brackets, splice brackets
Materials	.090 THK aluminum
Finishes	White powder coating
Lock System	Standard lockset with 2 <sup>3</sup> / <sub>4</sub> " backset
Mounts	Anchor, top, sandbag mounts, 3M® gripping material, 3M® double-sided adhesive foam
Ceiling Supports	Brackets, metal studs, and standard anchoring devices
Ratings	UL test results meet Class A Fire rating
Shipping Weight	Depends on final configuration of a McCain Walls system

**Contact Us to Request Quote or Learn More**  
760.295.9230 or visit [www.mccainwalls.com](http://www.mccainwalls.com)