



مصنع السماعيل لأنظمة المكاتب  
AL ISMAIL OFFICE SYSTEM FACTORY

## Racking and Shelving

### Pallet Racking, Cantilever Racking & Mezzanine

REV. 02









## **ALISMAIL OFFICE SYSTEM - AOS**

ALISMAIL OFFICE SYSTEM - AOS is one of the pioneers in manufacturing & fabricating of steel furniture in kingdom of Saudi Arabia.

In 1972, the company began operations in a modest factory in Dammam, years later, ALISMAIL has become a major manufacturing company due to the remarkable growth it experienced from the start, nowadays Alismail Office System is now considered one of the biggest and more advanced company, and leader in producing top of the line and quality Steel Furniture.

ALISMAIL also strive to maintain a quality work environment, which has a direct impact on the retention and productivity of our skilled employees. ALISMAIL is a model of excellence whose entrepreneurial performance and vitality have been rewarded with numerous prestigious awards.

Our commitment to sustainable development is also recognized in our industry. For all these reasons, we take great pride in presenting Alismail Office System to society, an industry leader and a contributor to the economic and social development of our communities — through its products, its success and its responsible vision.



# PALLET RACKING





# PALLET RACKING

## HD

### Heavy Duty Racking



1. Traditional pallet racking
2. Double deep pallet racking

## MD

### Medium Duty Racking



- Long-span Shelving



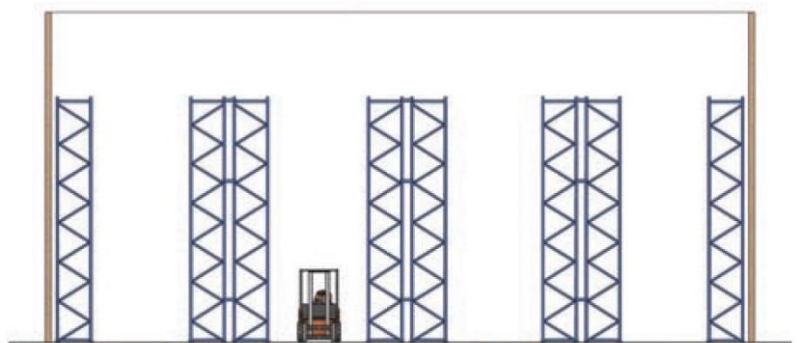
# HD

## Heavy Duty Racking ( Traditional pallet racking )

**EXCELLENT STOCK CONTROL. ADAPTABLE TO ANY SPACE, WEIGHT OR SIZE. CAN COMBINE WITH MANUAL PICKING SHELVES.**



The most universal system for direct and single access to each pallet. The optimal solutions for those warehouses with palletized

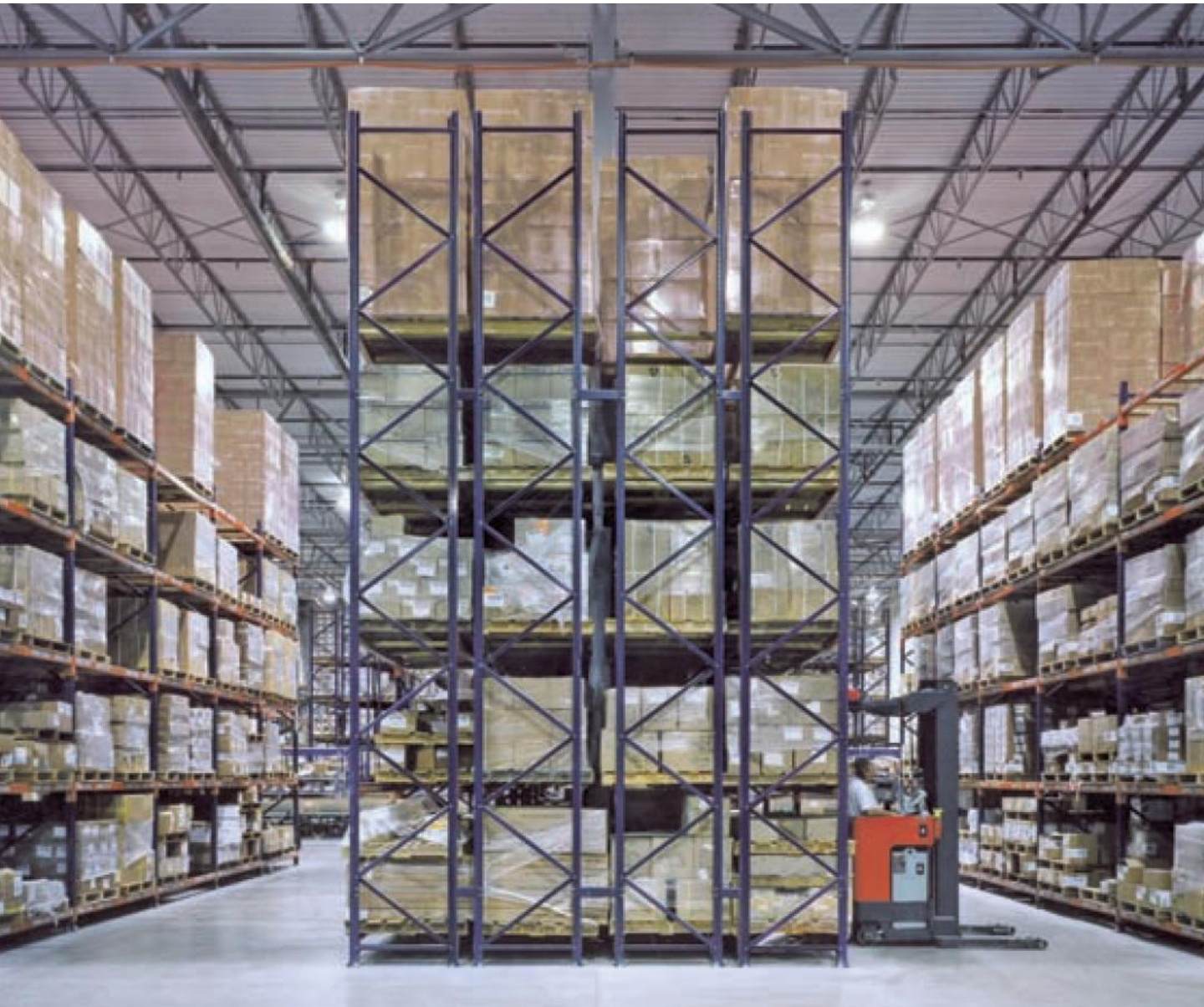




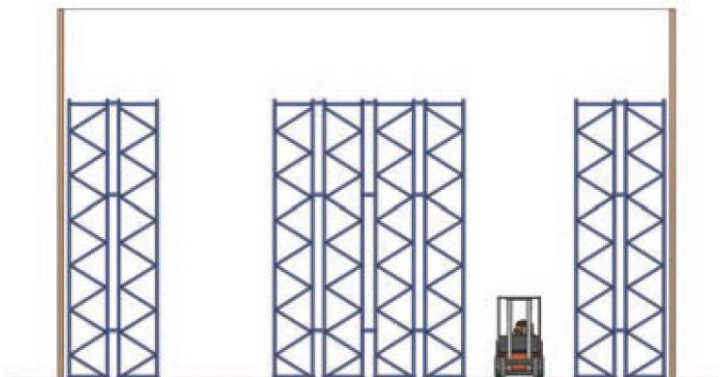
# HD

## Heavy Duty Racking ( Double deep pallet racking )

**EXCELLENT STOCK CONTROL. ADAPTABLE TO ANY SPACE, WEIGHT OR SIZE. CAN COMBINE WITH MANUAL PICKING SHELVES.**



Double deep racking is created by placing 2 double sided runs together .





# MD

## Medium Duty Racking ( Long-span Shelving )

**LONG-SPAN SHELVING SYSTEM CAN BE CONFIGURED TO ACCOMMODATE A WIDE RANGE OF STORAGE REQUIREMENTS.**

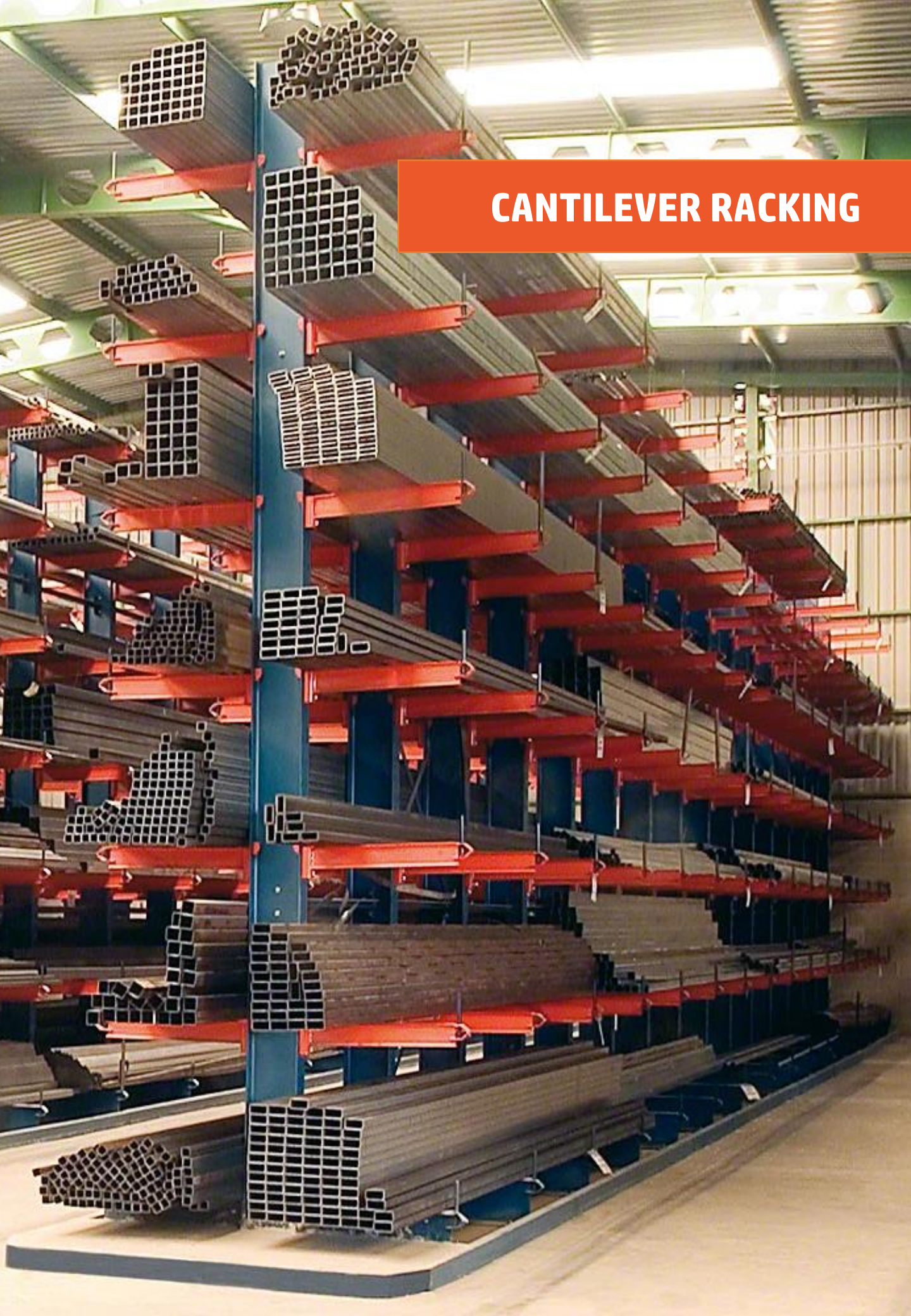


Long-span shelving is fast and easy to assemble and uses a modular design that provides the maximum storage capacity, no matter what space is available.





# CANTILEVER RACKING





# CANTILEVER RACKING

**HD**

**Heavy Duty Cantilever Racking**



Maximum support, strength and capacity. daily use in all sectors of industry.

**MD**

**Medium Duty Cantilever Racking**



These racks are used to store rolls of carpet, wood, pipe, or any long mid-duty materials.

**LD**

**Light Duty Cantilever Racking**



Light Duty Racking



# HD

## Heavy Duty Cantilever Racking

**HEAVY-DUTY CANTILEVER RACKS WITH ITS VERSATILITY OFFER MAXIMUM SUPPORT, STRENGTH AND CAPACITY.**



**Robust design, high stability. The uprights and feet are made from hot rolled IPE profile and are bolted together to form a rigid cantilever frame. Large footplates ensure even distribution of the load to the floor.**



# MD

## Medium Duty Cantilever Racking

**EASY ASSEMBLY. PERFECT TO STORE LONG AND HEAVY ITEMS.  
VERY SIMPLE AND RESISTANT.**



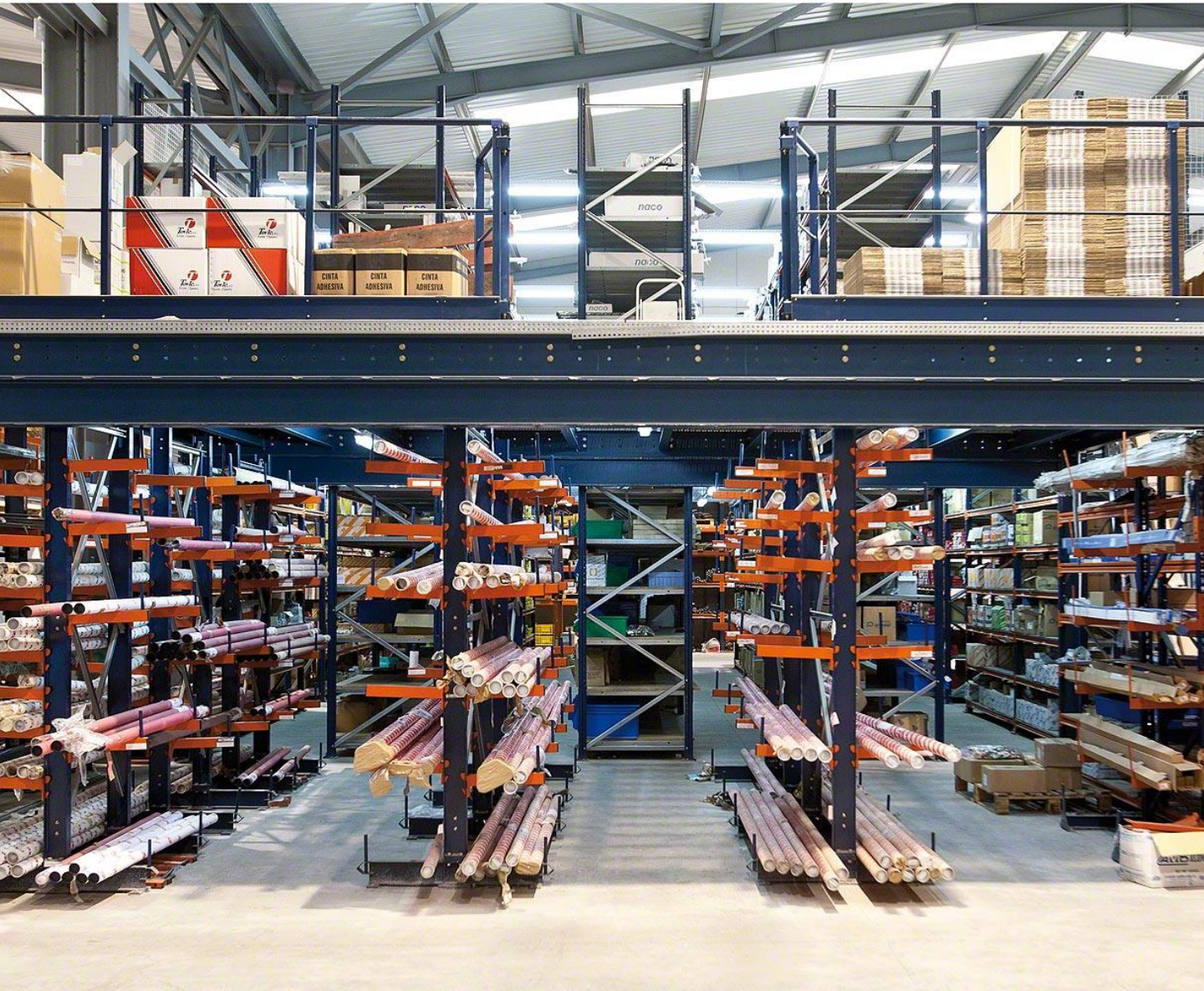
It is specifically designed to store long loads such as beams, profiles, pipes and timber. This rack enables loads to be handled by using lifting systems such as lift trucks, mobile cranes, stacker cranes, etc. These systems are chosen depending on the load to be stored (mainly weight and dimensions) or the height of the rack itself.



# LD

## Light Duty Cantilever Racking

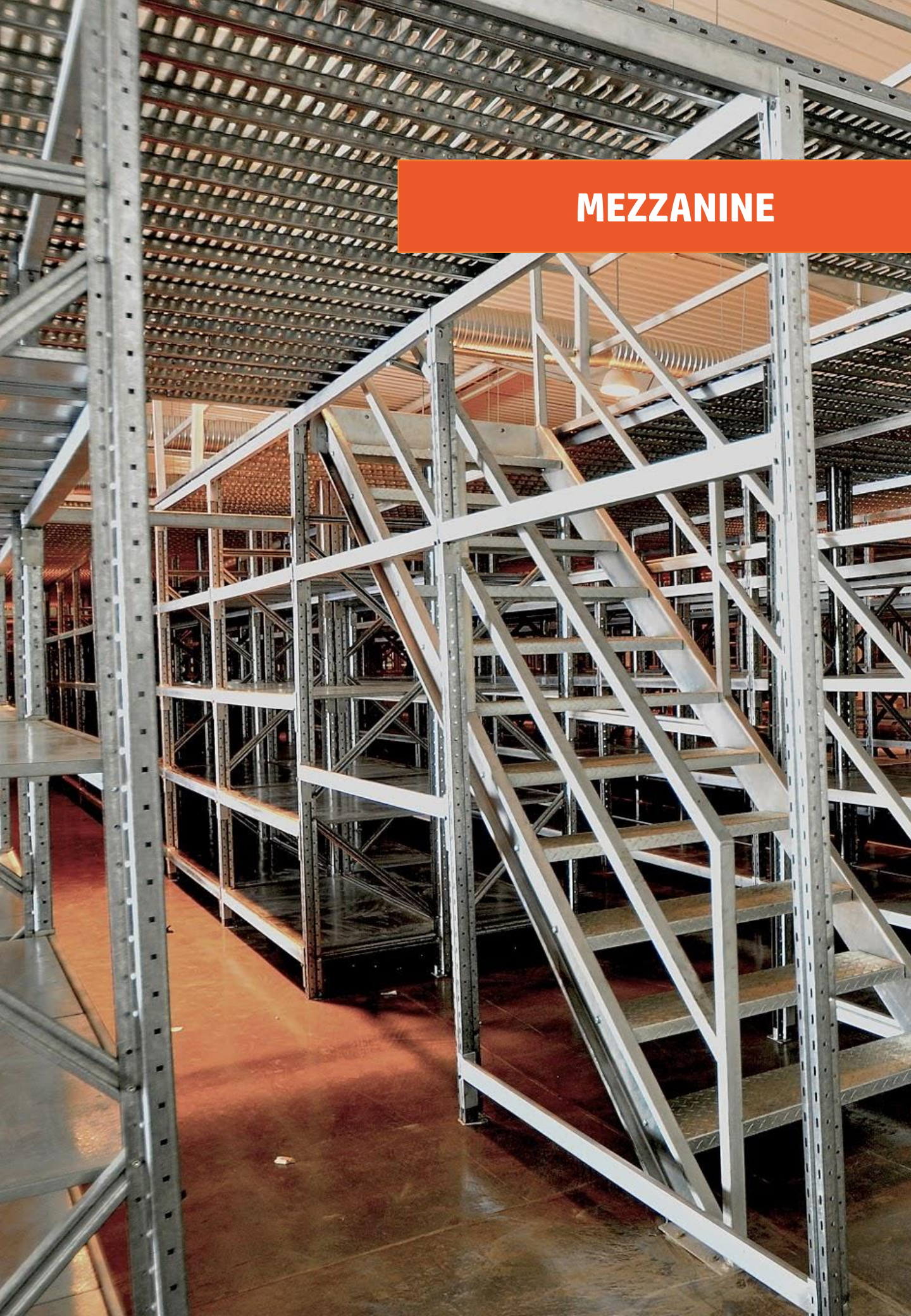
**PERFECT FOR STORING LONG AND LIGHT LOADS. SIMPLE, RESISTANT AND EASY TO ASSEMBLE.**



It is specially designed to store long items or items of varying length. The system basically consists of columns or two horizontal beams at the base to provide stability. A series of arms are attached on which the load is placed. All the elements involved fit together easily.



# MEZZANINE





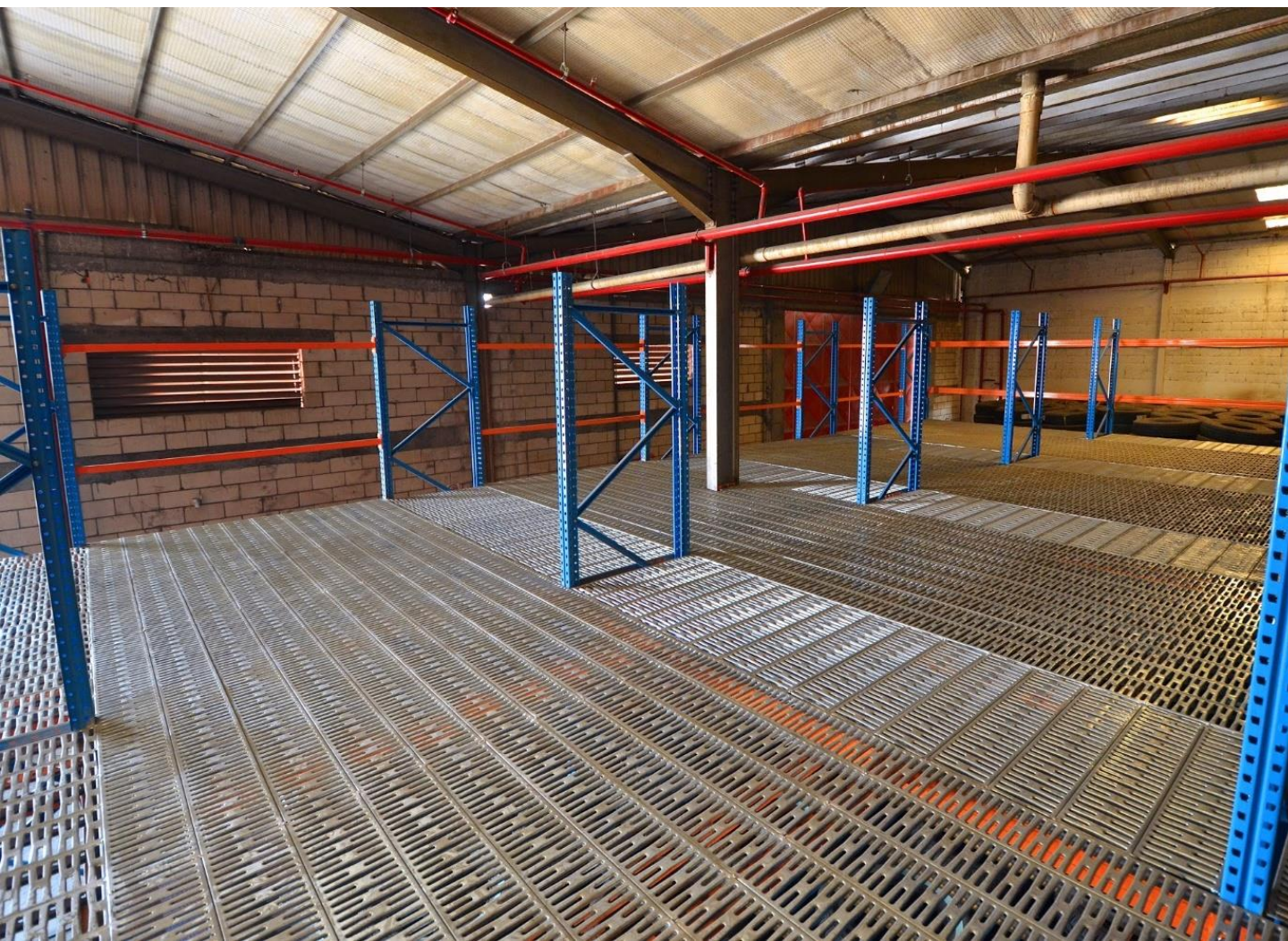
## Mezzanine ( Steel Structure )

**SYSTEMS THAT DOUBLE (WITH ONE FLOOR ) OR TRIPLE (WITH TWO FLOORS) THE SURFACE OF WAREHOUSES AND PREMISES. QUICK, EASY AND CLEAN TO ASSEMBLE.**

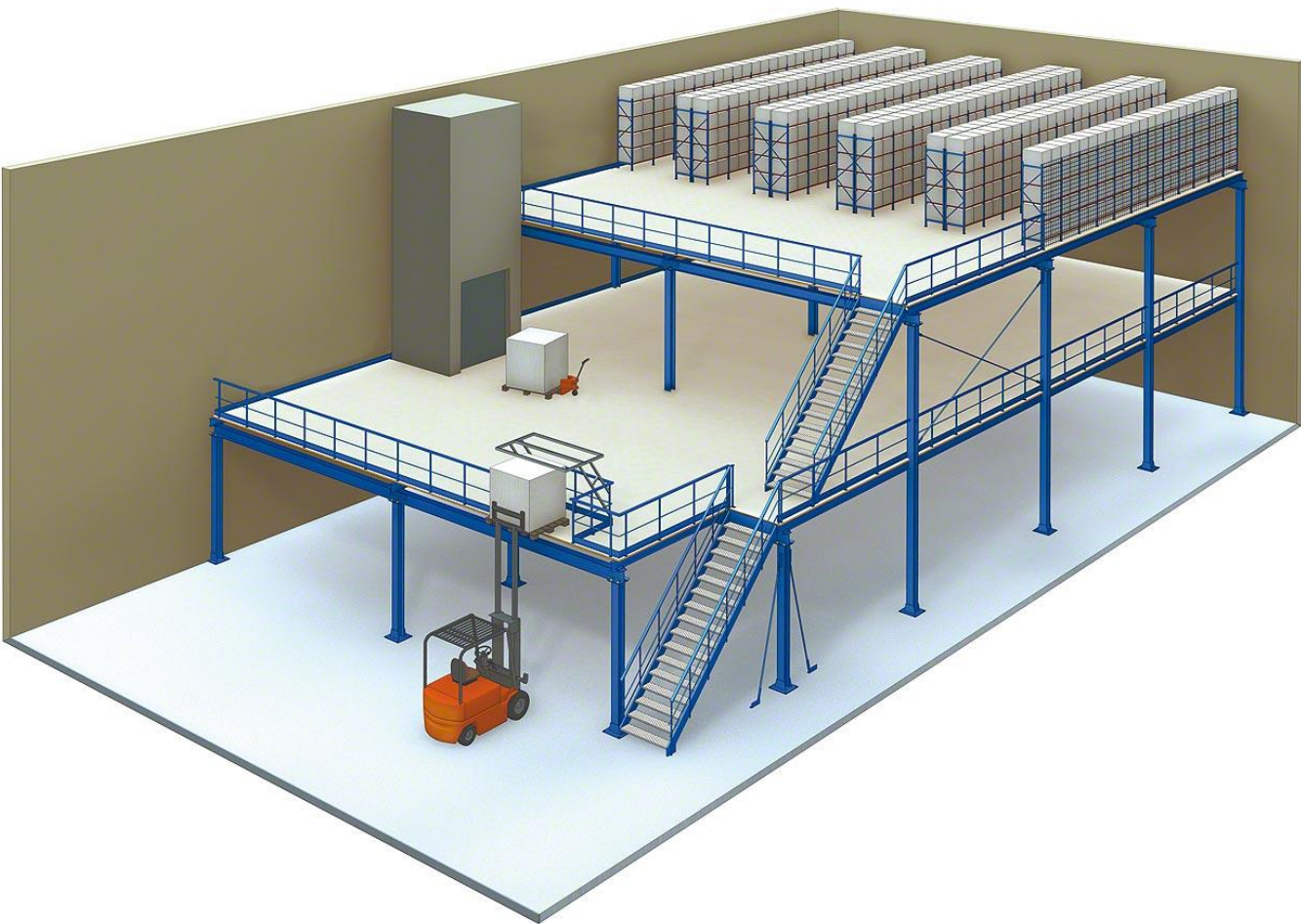
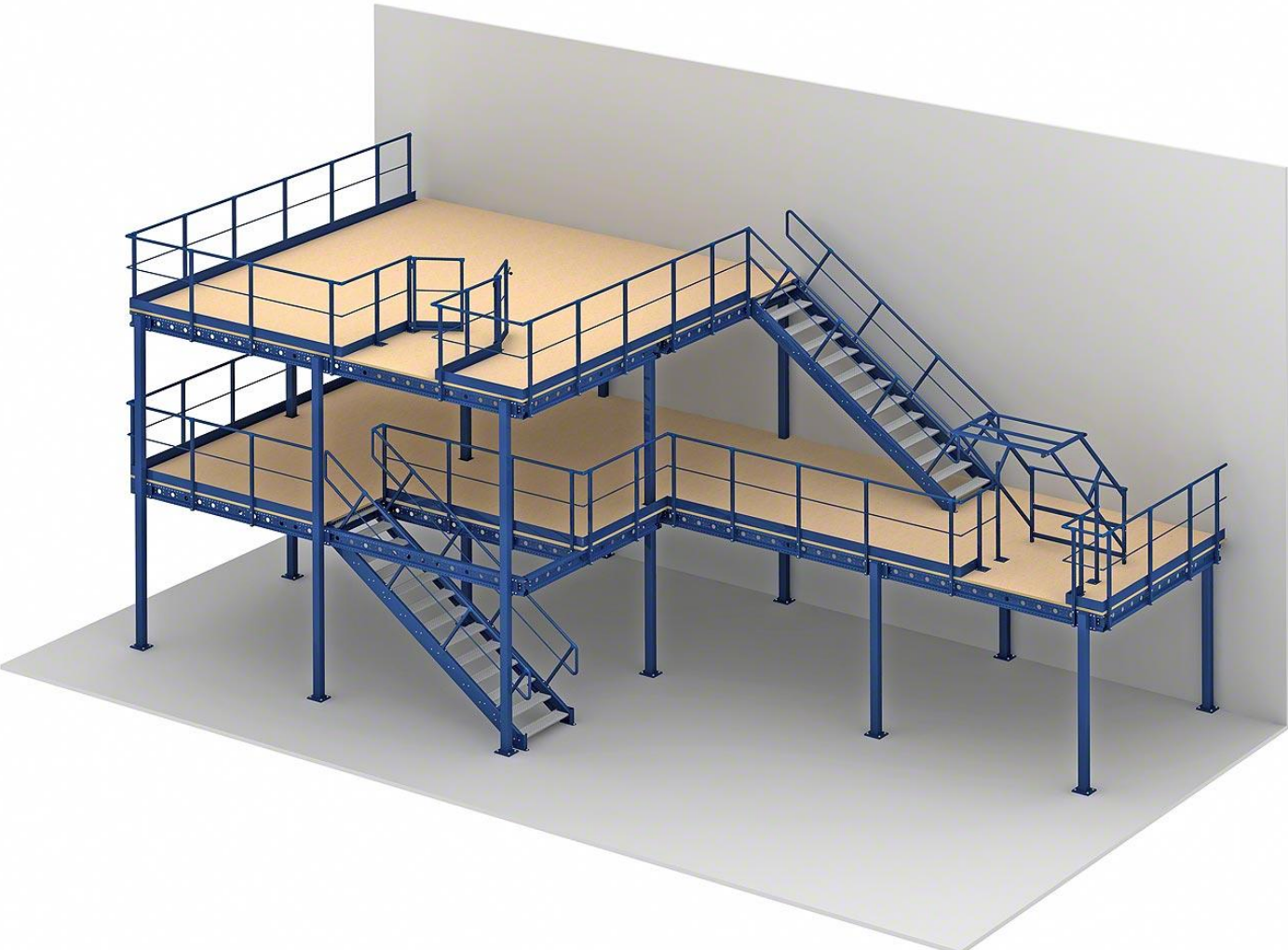


Mezzanine floors take maximum advantage of the height of premises, doubling or tripling the surface area and enabling it to be fitted out as a storage area, changing room, or offices, etc. The installation of a mezzanine is an ideal solution to maximize the space available by taking advantage of the height of the building.











## **HEADQUARTER LOCATION**

**Alismail Group Industrial Complex  
Block # 4 Ibn Zahr Street in 1<sup>st</sup> Industrial City,  
Dammam, Saudi Arabia**

**PO Box 919 Dammam, 31421 Saudi Arabia  
Tel : +966 92000 75 75  
Tel : +966 13 8472167**

 **@ AlismailOffice**

 **@ alismailgroup**

 **@ alismailgroup**

 **www.facebook.com/AlismailOffice**

 **alismail@alismail.com**

**w w w . a l i s m a i l . c o m**