

The April 2016 Newsletter Gardens Gate



CELEBRATIONS AT THE GARDENS

The Gardens offers picturesque settings for all special occasions, including wedding ceremonies, receptions, cocktail parties, anniversary's, birthdays, holiday parties, celebration of life events, meetings and seminars, and much more.

The Pavilion building, with its 4,100 square feet of space with two glass walled sides open to the beauty of The Gardens, can accommodate table seated events for up to 125 guests, up to 200 theater style for meetings, and for standing, walk-about type events and many more. Multi-area usage for larger events can be accommodated and is welcomed and Wedding Ceremonies can be held in any of the available areas at The Gardens suitable for guests and



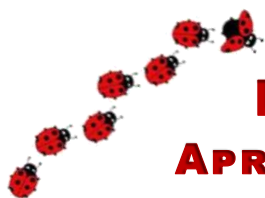
Continued on Pg 3

CONTENTS :

President's Message
Board & Committees
Propagation Team
Volunteer Opportunities
Little Friends in the Garden
March Calendar
Growing Forward

	What's Flowering in Florida	Pg12
Pg2	Community Based Volunteering	Pg13
Pg2	Can You Dig It	Pg14
Pg7	Horticulture Happenings	Pg15
Pg10	HORTence	Pg17
Pg10	Happenings @ The Gardens	Pg18
Pg11	Save The Dates	Pg19
Pg12	Supporters & Jazz Jams	Pg21

Reminder



KIDS PROGRAM
LADYBUG LAUNCH
APRIL 23RD • 11AM - NOON



Port St. Lucie *Botanical Gardens*

2410 SE Westmoreland Blvd.

Port St. Lucie, FL 34952

Phone: 772.337.1959

Fax: 772.237.5952

E-mail: info@pslbotanicalgardens.org

Web: www.pslbotanicalgardens.org

Hours: Wednesday - Saturday 10am - 4pm

Sunday Noon - 4pm

Closed Monday, Tuesday & Holidays

Suggested Donations:

Adults \$5

Students \$2

Children 12 & Under Welcome

Members and Active Military

(with family) Welcome (IDs required)

Mission Statement . . .

Friends' mission is to create and maintain a beautiful, serene sanctuary in the center of Port St. Lucie that is environmentally sound and naturally diverse and to provide educational, cultural and recreational opportunities for all who visit.

Officers & Directors . . .

President:	Joleen King
Vice President:	Illona Christie
Secretary:	Claire Clark
Treasurer:	Cheri Mabry
Directors:	Brenda Gustafson
	Jeffrey Policar
	Bill Neinast
	Gloria "Gigi" Norelli
	Jennifer Scee
	Tim Sutton

Standing Committee Chairs . . .

Strategic Planning Committee:	Joleen King
Horticulture Committee:	Bill Neinast
Finance Committee:	Cheri Mabry
Membership & Volunteer Committee:	Illona Christie
Gift Shop Committee:	Jennifer Scee
Resource Development Committee:	Claire Clark
Election Committee:	TBD

Newsletter...

Editor:	Judy Nash-Wade
Design:	Mark Barnes

The Port St. Lucie Botanical Gardens is managed and operated by Friends of the Port St. Lucie Botanical Gardens, Inc. The Friends of the Port St. Lucie Botanical Gardens, Inc. receives no funding from any government agency. Your admission donations help us maintain and grow The Gardens.

PRESIDENT'S MESSAGE...

Spring! While the arrival of Spring in South Florida is a subtle awakening of our trees and wildlife, lacking in some of the spectacular shows of green and color that many of us remember from "back up north", our Tropical Spring is very much here. There is an increase in bird song and the oak trees are

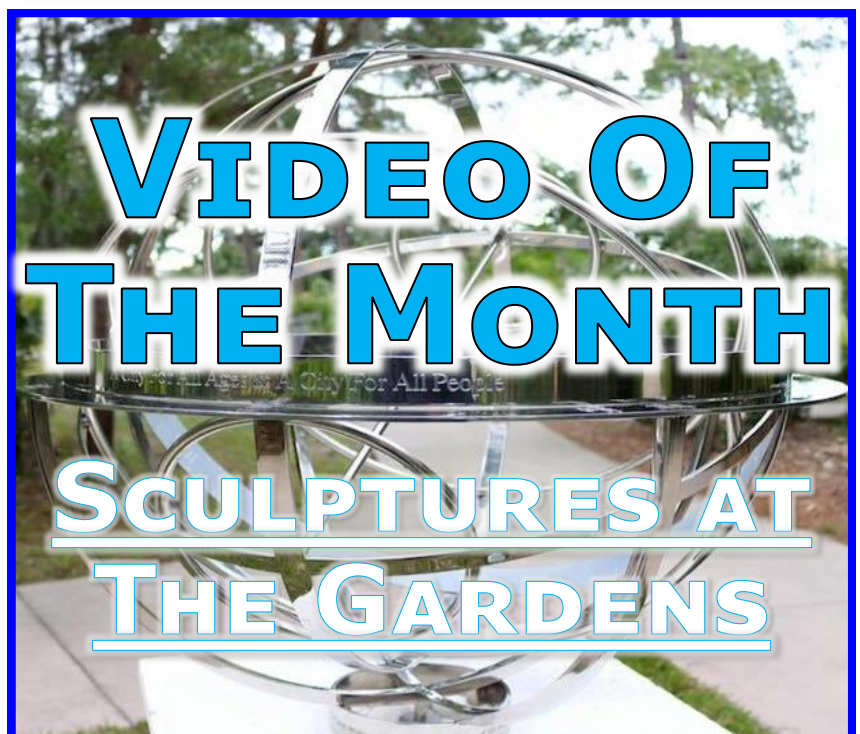


breaking out in bright, healthy green. While the pollen accumulation on cars and screens can be troublesome and inconvenient, it's part of the passage of the seasons.

Our PSL Botanical Gardens reached a milestone in March, closing our first six years! March 6 2010 saw the Grand Opening of our Gardens. We're excited to move into the next growth period.

I invite you to visit us soon, and visit us often!

Joleen King
President



Bridal Party to provide the desired scenic background. Many couples choose to have their ceremony (outside) and reception (inside) at The Gardens for the convenience of their guests as well as to capture the beauty of the setting. Reception tabled seating capacity, including the bridal party and a dance floor is 100, without dance floor up to 125.

Our knowledgeable Gardens' volunteer Event Planners work diligently to plan your special event and enjoy working with you to make sure every detail is attended to. We urge you to tour The Gardens on-your-own to ensure that you know the absolute beauty of the grounds and facilities. Our Welcome Desk volunteers will be happy to check available dates and record initial contact information regarding the basic parameters of your event, forwarding it to the Event Planner who will contact you for further discussion and details. During that meeting, arranged by appointment, you will be able to share your vision and become familiar with our facility rental policies. We look forward to hosting your next event at The Gardens.









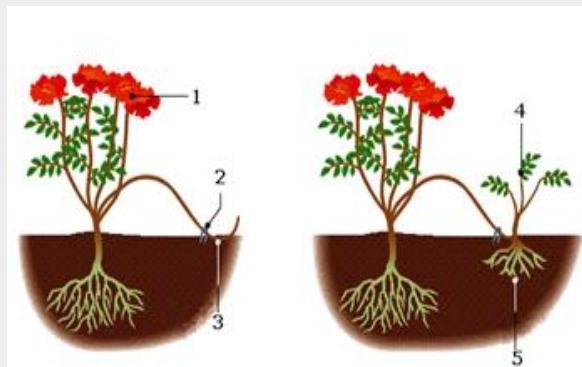
Click on the picture above to check out a teaser video from a gorgeous Spanish themed wedding at The Gardens done by Verola Studio LLC



PLAY IN THE DIRT WITH THE PROPAGATION TEAM!

Join us on Fridays 8:30AM – 12 Noon to learn and practice the art of propagating. Our efforts increase the number of plants for our Propagation Plant Sales, and those proceeds directly benefit the entire Botanical Garden.

Propagation needs **YOU!** The Friends of PSLBG are all volunteers!! Experience is not necessary but more than welcome – We will have seasoned gardeners available to assist you.



Bring gloves and pruners and a hand shovel if you have them and be ready to “play in the dirt” and learn propagation techniques. We will also be weeding pots, up potting and other fun activities. Bring your cuttings to share and propagate for the benefit of the Gardens. Hats, suntan lotion, bug spray are recommended. Closed toe shoes are required. Water will be provided. Bring snacks – sharing is fun!

Not able to join the team right now? – stop by and see what we have been working on! Contact Brenda Gustafson at 772-678-8523 for more information.







VOLUNTEER OPPORTUNITIES!

OPPORTUNITY OPEN: GIFT SHOP & WELCOME CENTER

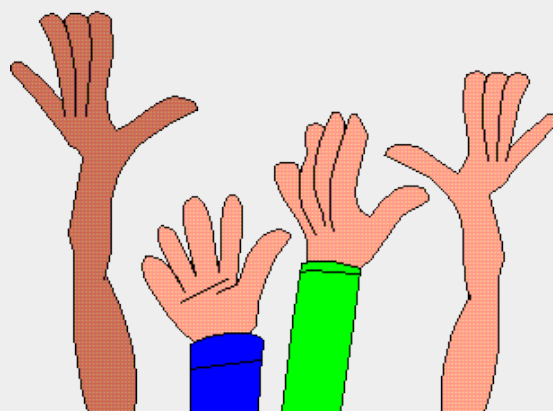
Looking for volunteers who will assist with the daily operation of the Gift Shop and Welcome Center. Meet and greet the public, assist in the selection and sales of gift items, books and other merchandise!

If you have friendly customer service skills, enjoy working with others, can (with training) accurately make sale transactions, and perform routine office functions, then this fun and creative volunteer opportunity is for you!

The Welcome Center and Gift Shop are open Wednesday – Saturday 10AM – 4PM and Sunday 12PM– 4PM. We are in particular need of volunteers on Saturday and Sunday, but help on any day is helpful.

Opportunities are also available throughout the Gardens – just ask!

Contact the Gardens at 772.337.1959 or come on in and fill out our Volunteer Application. We will be happy to see you!



VOLUNTEERS NEEDED

LITTLE FRIENDS IN THE GARDEN: ANIMALS, BIRDS, AND BUGS!



Name our Osprey! Have a good suggestion on what we should name our favorite nesting Osprey? Send your suggestion by email to info@pslbotanicalgardens.org or stop by and drop off a note. There just might be a little friendly token for you if your suggested name is chosen!



3 rd	Leader Cheer Volunteer work day	10:00 am – 12:00 noon	
4 th	Board of Directors Meeting	4:00 – 6:00 pm	Members Welcome
6 th	Beginning Spanish Classes	10:00 - 11:30 am	Fee info. call 772.924.1002
6 th	German American Club Board Mtg.	2:00 pm – 4:00 pm	Members Welcome
6 th	Broward County Parks & Rec Tour	10:00 am – 2:00 pm	Closed tour
6 th	Ft Pierce Jazz & Blues Jazz Jams	6:30 – 9:30 pm	\$5 Donation, Members \$4
7 th	German American Chorus Rehearsal	2:00 pm – 4:00 pm	Members Welcome
11 th	Rio Lindo Board Meeting	10:00 am – 12:00 pm	Rio Lindo Board Members Welcome
12 th	Orchid Society Meeting	11:00 am – 3:00 pm	Members Welcome
13 th	Beginning Spanish Classes	10:00 - 11:30 am	Fee info. call 772.924.1002
14 th	PSL Anglers Club Meeting	6:30 – 9:00 pm	All Welcome
20 th	Beginning Spanish Classes	10:00 am- 11:30 am	Fee info. call 772.924.1002
20 th	Ft Pierce Jazz & Blues Jazz Jams	6:30 - 9:30 pm	\$5 Donation, Members \$4
21 st	Treasure Coast Hibiscus Society Mtg.	10:30 am – 1:00 pm	All Welcome
21 st	German American Chorus Rehearsal	2:00 – 4:00 PM	Members Only
23 rd	Propagation Meeting	9:30 am – 10:00 am	All Welcome
23 rd	Kids Program: Ladybug Launch	11:00 am – 12:00 noon	Kids 5-12 yrs old. Registration Required. Call 772.337.1959
23 rd	Hands Across The Garden Fundraiser for Hands Clinic	6:30 – 9:00 pm	Tickets \$40 per person/\$75 Couple Call Melissa Giarratano/772.579.0922 or Deb Thompson/772.361.3109
24 th	Ocean Palms Retirement Community Tour	1:30 pm – 2:45 pm	Closed Tour
25 th	Rio Lindo Garden Club Meeting	12:45 – 4:00 pm	Members Welcome
27 th	Beginning Spanish Classes	10:00 - 11:30 am	Fee info. call 772.924.1002
30 th	Horticulture How-To Series: Pruning Trees	10:00 - 11:30 am	Members - Free / Non-members \$10

For more information on these & other events, please call 772.337.1959

GROWING FORWARD: GARDEN ROOMS

Our Garden Room leads had a progressive meeting in March, led by Horticulture's Garden Rooms Committee Chair, Tim Sutton. The purpose of the meeting was to introduce new members and discuss the future direction and some of the new and exciting activity at the Gardens and the individual Garden Rooms.

Topics also discussed included: 1) current plant collection inventory which coincides with a brief hold on new plantings and will result in new plant labeling system. 2) available options for help in the Garden Rooms; 3) the importance of logging in volunteer hours; upcoming newsletter coverage of the Garden Rooms including "Garden Room of the Month" and other Garden Room updates; and 4) status update on the Propagation Area.



WHAT'S FLOWERING *in Florida?*

APRIL

NORTH/
CENTRAL

Rose*
Non-native, evergreen (*Rosa* spp.)

Southern Magnolia
Native, evergreen (*Magnolia grandiflora*)

Bottlebrush
Non-native, deciduous (*Callistemon* spp.)

Gardenia
Non-native, evergreen (*Gardenia jasminoides*)

Glossy Abelia
Non-native, evergreen (*Abelia x grandiflora*)

Yesterday-Today-and-Tomorrow
Non-native, evergreen (*Brunfelsia grandiflora*)

SOUTH

Rose*

Jacaranda
Non-native, semi-deciduous (*Jacaranda mimosifolia*)

Oleander
Non-native, evergreen (*Nerium oleander*)

Hibiscus
Native and non-native, evergreen (*Hibiscus* spp.)

Chinese Fringe Bush
Non-native, evergreen (*Loropetalum chinense*)

UF IFAS Extension
UNIVERSITY of FLORIDA

FLORIDA MASTER GARDENER

Gardening SOLUTIONS

For more information, please visit
GardeningSolutions.ifas.ufl.edu

* Both in North and South.

COMMUNITY BASED VOLUNTEER PARTNERS HELP KEEP THE GARDENS BEAUTIFUL!

Involvement in the community is part of the LeaderCheer program. This non-profit local organization gives young athletes an opportunity to excel, to set and meet weekly goals for further improvement, and Cheer for Fun; Lead for Life. Members and their adult leaders have been volunteering their time and effort to help keep the Gardens beautiful. Thank them when you next see them!



LeaderCheer
Cheer for Fun, Lead for Life!





Can You Dig It?

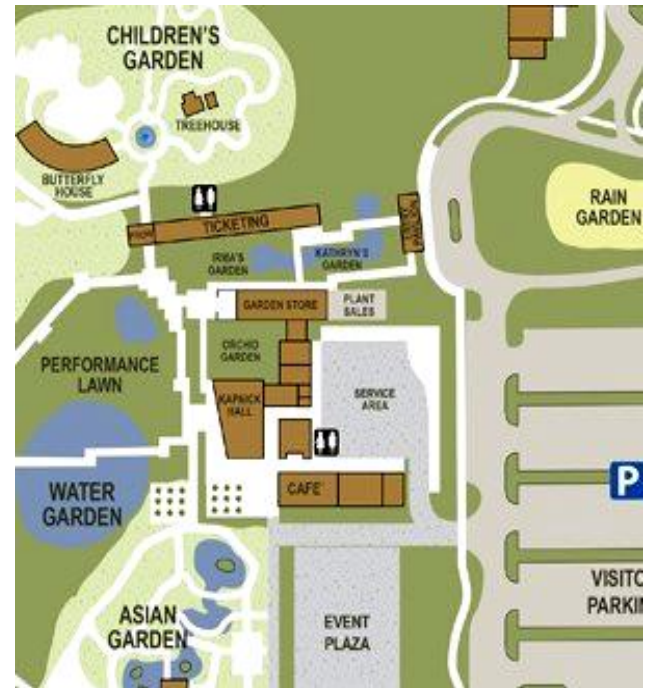


NAPLES BOTANIC GARDEN

Incorporated in 1994, the Garden consists of 170 acres of cultivated gardens and preservation land, representing seven distinct natural habitats and ecosystems, and featuring over 1000 species, with special emphasis on the ecosystems between the 26th parallel north and the 26th parallel south. The gardens are located at 4820 Bayshore Drive, Naples, FL 34112 and was founded in 1993.

In 2000, the late Harvey Kapnick, Jr. donated \$5 million for the purchase of 170 acres of open space 3 miles from downtown Naples. In 2006 the master plan for Naples Botanical Garden was completed with the contemplated gardens representing the culture and flora of the tropics.

Construction on the first phase began in 2008 with the digging of Deep Lake and Lake Tupke and the sculpting of the site with 250,000 yards of fill produced by lake excavation. In November of 2009 the Garden opened the Smith Children's Garden, Kapnick Brazilian Garden, Kapnick Caribbean Garden and the Smith River of Grass.



In January 2010, The Florida Gulf Coast University Harvey Kapnick Research and Education Center, a shared use facility, opened. Later in 2010 the Garden opened the Scott Florida Garden, Buehler Enabling Garden, Garden Club of Naples Idea Garden, Lea Asian Garden and the Water Garden.

In October of 2014 the master plan implementation was completed with the opening of the Chabreja Visitor Center including Kathryn's Garden, Irma's Garden, LaGrippe Orchid Garden, Kapnick Hall, Berger Shop in the Garden and the Fogg Café.

See More at:

Naples Botanical Garden

https://en.wikipedia.org/wiki/Naples_Botanical_Garden



HORTICULTURE HAPPENINGS...

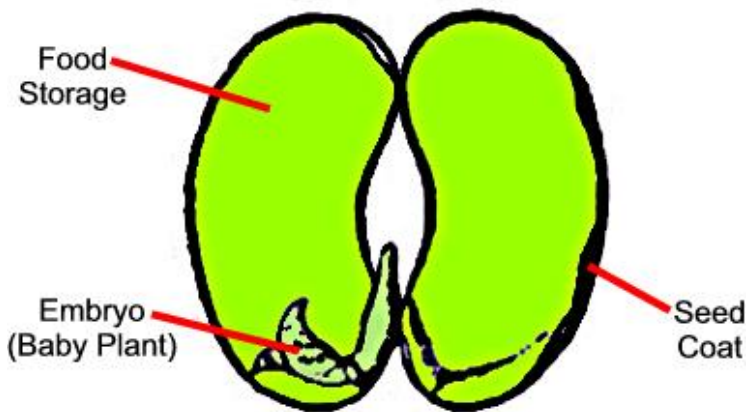
Friends of the Port St. Lucie Botanical Gardens

Horticulture Class Series 2016

Seeds - germination, storage, etc.

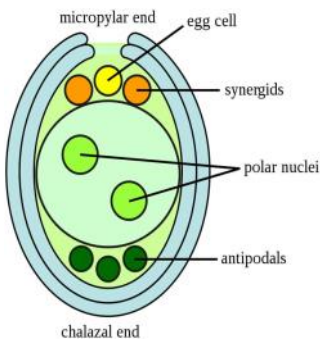
1. Seeds. Contain an embryo, stored food, usually a skin or other covering, may have a hard shell or husk. May be surrounded by soft fruit. Some

Parts of a Seed



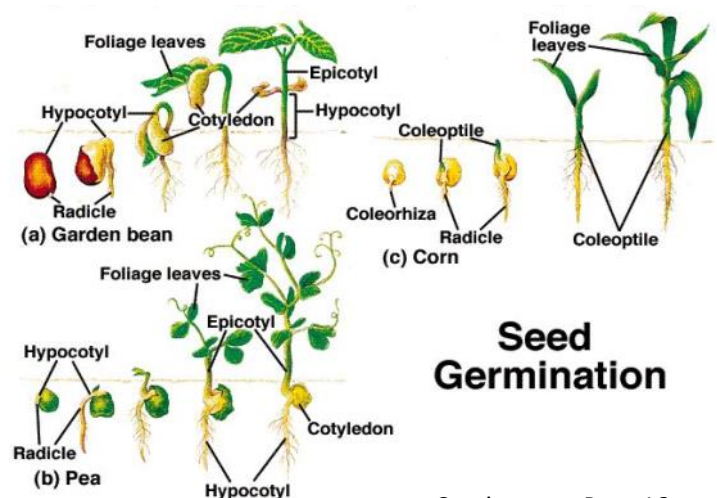
plant seeds do not include enough materials for the seedling to develop and thus are dependent on outside assistance. Orchids for instance which in nature are generally dependent on fungi or in vitro on the nutrients in the mix. Without this assistance they do not contain for adequate materials for the seedling to develop. Some plants produce "spores" which are generally one celled organisms that develop into a plant. Seeds are usually multi-celled, much larger than spores, and contain a plant embryo. Spores also often need assistance to develop into plants.

2. Plant reproductive structure. Product of plant sex or not. Product of multiple parents or not. This determines if there is genetic modification or recombination. In seed production without sex, the seed will be close to identical to the parent



plant. Some plants (especially citrus) produce seeds with multiple embryos; one of those embryos is the product of sexual reproduction and the others are not. Thus the "others" are identical to the parent plant. Called apomictic reproduction. Flower form often reveals whether or not the plant is self pollinated or pollinated by another plant. Example tomatoes with a closed flower structure are often self pollinated. Grasses which are wind pollinated are generally not self pollinated.

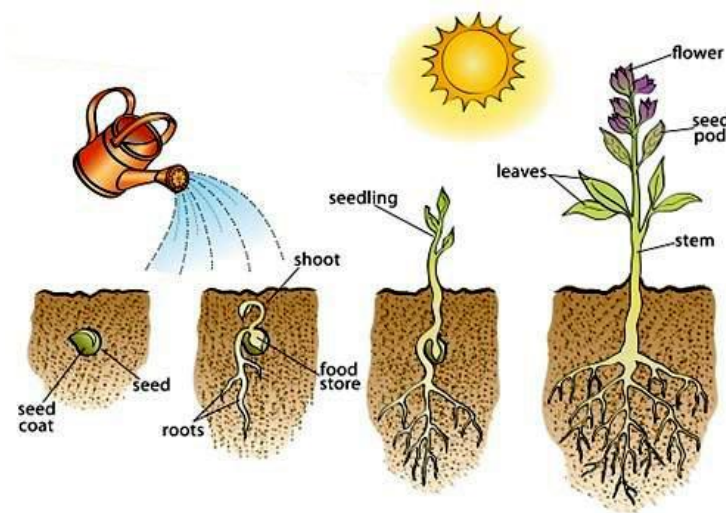
3. Other oddities. Mangrove propagules which are germinated seeds that have started development while attached to the plant. Most common in this area are red mangroves. Also often seed in very mature citrus and tomatoes. The little seedlings look like worms. The term for this is viviparous.
4. Seeds must be mature to germinate. Function of dormancy is sometimes to allow adequate time for further development of the embryo. The other primary function is to ensure that the seed germinates in an environment that allows for plant development - winter has passed; enough rain has fallen; the soil is warm enough, etc.



Seed Germination

Continues on Page 16

5. Recalcitrant seeds. Dormancy - delayed germination of seeds. Dormancy increases survival by testing the environment. Many types of dormancy - physical, chemical, enzyme, etc. Some plants have multiple dormancies. Lots of data on overcoming dormancy. Usually involving removing meaty or jelly materials which may include germination inhibiting chemicals, scarring, filing, or sanding hard seed coats to allow the entry of water, soaking or



leaching, heating, drying, microwaving, acid treatments, you name it some botanist has tried it. Temperate dormancy often requires damp chilling to overcome - 60 to 120 days (fake winter). Stratification is not usually required for horticultural seeds or for sub-tropical or tropical seeds.



6. Temperate climate conventional horticultural/agricultural seeds generally do not have any dormancy. Dormancy in agricultural/horticultural seeds would just frustrate farmers/gardeners. Generally, tropical and subtropical seeds do not tolerate cold storage - below 40 F. They also may not have any dormancy which means they need to be planted as soon as they fall off of the plant. This complicates shipping, storage, etc. The alternate is tropical seeds that have a fruit or seed coat dormancy that must be overcome. This is designed to ensure that enough rain has fallen to provide moisture for the seedlings. To overcome dormancy generally clean any soft fruit and file any hard fruit. See above for more things to try. Don't try cold.

7. Seed storage. Temperate horticultural seeds will generally tolerate long storage periods. Seeds generally should be stored in a clean, cool, dry, dark environment. Recent research indicates that long seed storage is better if the seeds are not refrigerated. The old advice was to refrigerate seeds. Tropical seeds are difficult to store. There is generally less research available; they do not tolerate chilling; and they may have not dormancy. Famous seeds - during WW II seed from the horticulture collection in the British Museum that were 100's of years old germinated when they were exposed to fire and then water i.e. bombs and then the firemen.



*The content of this lesson plan was provided by a Master Gardener with accents by The Gardens Gate. It should be noted that Master Gardeners have a variety of views and it is up to the individual to determine what information best fits one's own needs.

HELPFUL Hints (tips) FROM HORTENSE...

Interesting Factoids...

The banana cannot reproduce itself. It can be propagated only by the hand of man.

Airports at higher altitudes require a longer airstrip due to lower air density.

The University of Alaska spans four time zones.

The tooth is the only part of the human body that cannot heal itself.

In ancient Greece, tossing an apple to a girl was a traditional proposal of marriage. Catching it meant she accepted.

Warner Communications paid \$28 million for the copyright to the song Happy Birthday.

Intelligent people have more zinc and copper in their hair.

A comet's tail always points away from the sun.

The Swine Flu vaccine in 1976 caused more death and illness than the disease it was intended to prevent.

Caffeine increases the power of aspirin and other painkillers, that is why it is found in some medicines.

The military salute is a motion that evolved from medieval times, when knights in armor raised their visors to reveal their identity.



*HORTense takes no responsibility for her claims. And furthermore, she is penniless so don't try suing her...



JAZZ JAMS

AT THE GARDENS



Presented By



Wednesday
April 6th & 20th
6:30 - 9:30 pm

Weddings are perfect at The Gardens...

For more information, please visit
the Facility Rental page on our
website or call The Gardens at
772.337.1959



Port St. Lucie

Botanical Gardens
Florida

www.PSLBotanicalGardens.org



Saturday
April 23, 2016
11am - Noon

Ladybugs are beneficial in nature.
Come explore our gardens as
we have fun releasing Ladybugs
and discover fun facts about them.

Ladybug Launch



Free for
Children Ages
5-12 & families

Sponsored/organized by the Friends of the Port St. Lucie Botanical Gardens



Port St. Lucie
Botanical Gardens
Florida

Horticulture How-To Series: **PRUNING TREES**

Port St. Lucie Botanical Gardens

Friends of Port St Lucie Botanical Gardens Horticulture Committee presents:
the first in new **'How -To'** series of hands-on workshops

This Propagation Event will be held in the Gardens Propagation Area

Saturday, April 30, 2016 from 10:00 - 11:30 am

What You'll Learn:

- Why prune?
- When to Prune
- Where to Cut
- The three cut method
- Using the right tools for the job
- Reducing and thinning out trees
- When to seek the services of a professional

Sign up early for this informative event - Class size is limited to 20

Cost: PSLBG Members - **NO CHARGE** • Non-Members - **\$10**

Become an individual PSLBG member for \$25 and you can attend the event **FREE!!**



Presenter, Jamey Liddell,
ISA Certified Arborist

Jamey Liddell a local ISA Certified Arborist, Master Gardener and owner of Southern Branch, Inc., a local full service tree care company. Mr. Liddell is a member of the International Society of Arboriculture and the Tree Care Industry Association. He is originally from California, where he was involved in the pruning, planting, caring for and harvesting figs as a fourth generation fig farmer. Jamey went to school in Stuart and college in Sarasota, where he became interested in tropical horticulture. After moving to Utah, he owned a tree care business that managed large commercial and residential tree care projects, as well as specializing in Hazard Tree Removal in the Park City area. Jamey Recently returned to St. Lucie County to be closer to his family and to start his company, Southern Branch, Inc.

[CLICK HERE TO SIGN UP](#)

SAVE THE DATES

Upcoming Plant Sales

Tropical Treasures Plant Sale

Saturday • May 28th • 9am to 1pm

Taste of the Tropics Plant Sale

Saturday • July 2nd • 9am to 1pm

Bromeliads & More Plant Sale

Saturday • July 30th • 9am to 1pm

Orchids, Orchids & More Plant Sale

Saturday • August 27th • 9am to 1pm

Vegetables & More Plant Sale

Saturday • September 27th • 9am to 1pm

**Stop in to see
the many new
items available
in our Gift Shop
including our very
own Propagation
Plants. Remember –
Mother's Day is just
around the corner.**

THE *gift* 
SHOP

Port St. Lucie *Botanical Gardens*

S U P P O R T E R S

Royal Green

LANDSCAPE & PEST MGMT INC.

831 N.E. Dixie Hwy Jensen Beach Florida 34957

- * Rugose Spiraling White Fly Control
- * Interior Pest Control
- * Lawn, Tree & Shrub Fertilization
- * Disease Control
- * Insect & Weed Control
- * Fungus Control
- * Guaranteed Results
- * Locally Owned and Operated Since 1996
- * Preventative Grub Control
- * Citrus & Palm Care
- * Commercial and Residential

* Licensed & Insured BMP State Certified Technicians

EXPERT LAWN, TREE & SHRUB SPRAYING
(772) 334-1144

Free Inspection & Estimates
No Fine Print!!

NEW CUSTOMER OFFER
\$30 CREDIT
To Redeem Mention This Ad

Visit our new website:
www.RoyalGreenforSL.com



The 19th Hole at the Saints

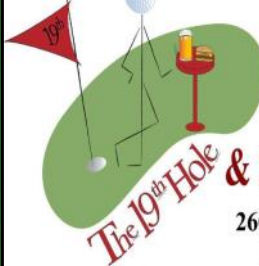
Restaurant & Banquet Hall

772-337-0180

Carl Bussett/Rick Aslin
Proprietors

& Sandpiper Room

2601 SE Morningside Blvd.
Port St. Lucie, FL 34952



BETH GRADY
REALTOR®



SWEET LIFE
REALTY GROUP

718 SW PORT ST LUCIE BLVD #4
PORT ST LUCIE, FL 34953

DIRECT
772.361.1447

E-MAIL
BETH@SWEETLIFEREALTY.COM

"Home values have increased, call me today for a free market evaluation."

The service you deserve, the lifestyle you desire...

RECREATION: (772) 807-4499 HOSPITALITY: (772) 807-4488

HUMANA FITNESS & WELLNESS CENTER: (772) 204-7101

Weekly Outdoor Market • Banquet Facilities
Membership Specials • Special Events



Port St. Lucie

Civic Center

Where the Research Coast Meets

9221 S.E. CIVIC CENTER PL
PORT ST. LUCIE, FL 34952

Say I Do - Wedding Ceremonies

www.maureendavisweddingofficiantllc.com

Maureen Davis • Wedding Officiant
Port Saint Lucie, Florida

772-323-0945 (c) 772-985-7946



Beach Weddings a Specialty
Maureen Ahern Davis
ipronounceu@gmail.com



POST
INSURANCE
YOUR KEY TO PEACE OF MIND.

BE SURE YOUR HOME IS PROTECTED

- Personal attention and custom insurance
- Portfolio of high-quality insurance companies
- Discounts and competitive rates
- Ease of doing business

We offer insurance for every need and budget. Get additional protection for things like animal liability, screened enclosure, or specialty items like jewelry, fine arts, and collectibles.

Let Post Insurance focus on what's important to you.

878-8184

www.InsureWithPost.com



THE SAINTS

At Port St. Lucie Golf Course

www.CityofPSL.com/Golf

2601 SE Morningside Blvd. • (772) 398-2901
Port St. Lucie, FL 34952 • Fax: (772) 398-2778

PORT ST. LUCIE
PARKS & RECREATION



Mark A. Barnes
Making You & Your business Look Great

772.801.8800

Mark@MarkBarnesMusic.com

Business Card Designs
Logo Designs
Graphic Designs
Specialty Cards
Real Estate Ads & Designs
Video Home Tours
Basic Web Sites
Copyright Services
ASCAP & Music Site Setup
QR Code Design
Video Bios and Resumes
Power Point Presentations
Virtual Assistant
Real Estate Services

Welcome to All Garden Goers...

This month our
Jazz Jams will be held on
April 6th
& **April 20th**
starting at 6:30 pm



At The Gardens

Donation \$5 per person.
Gardens & Jazz Society
Members \$4 per person.

Sponsored by the
Fort Pierce Jazz & Blues Society

PUT YOUR AD HERE

Contact Mark Barnes
at 772.801.8800

or e-mail [NEWS@](mailto:NEWS@PSLBOTANICALGARDENS.ORG)

PSLBOTANICALGARDENS.ORG