



Ahmed H. Al-Marhoon & Bros Co.

For Trading & Contracting

Ready Mix Concrete

HEAD OFFICE:

P.O.BOX: 42,

SAFWA 31921

KINGDOM OF SAUDI AREBIA

TEL : +966 (3) 6676770

FAX : +966(3) 6674721

E-Mail : info@almarhoon.com.sa

www.almarhoon.com.sa

TABLE OF CONTENTS

01. INTRODUCTION
02. ORGANIZATION CHART
03. PRODUCT & SERVICES
04. OUR STRENGTH
05. TECHNICAL INFORMATION
06. SPECIFICATION AND STANDARDS
07. QUALITY CONTROL & QUALITY ASSURANCE
08. LABORATORY FACILITIES
09. COMPETENCY TRAINING MAIN CLIENTS
10. CUSTOMER EVALUATION
11. PURCHASING & SUPPLIER EVALUATION
12. HEALTH SAFTY & ENVIRONMENTAL PROTECTION

01. INTRODUCTION

Ahmed H. Al-Marhoon & Bros Co is the leading producer and supplier of ready-mixed concrete and related products in Saudi Arabia. **The company was established in 1978 and** Utilizing the most current technology, combined with day-to-day on site work, Al Marhoon has earned a legacy of high quality in the production and sales of ready-mixed concrete. The strategic locations of our plants that are scattered over prime industrial, residential and commercial locations in the Eastern Province, coupled with modern fleets of concrete pumps and delivery transit-mixers, enable Al Marhoon to serve its customers efficiently and quickly. All our batching plants are fully computerized which allows us to supply the most accurate mixes to our customers. All these factors give Al-Marhoon the ability to operate with a state- of- the- art dispatch and delivery system.

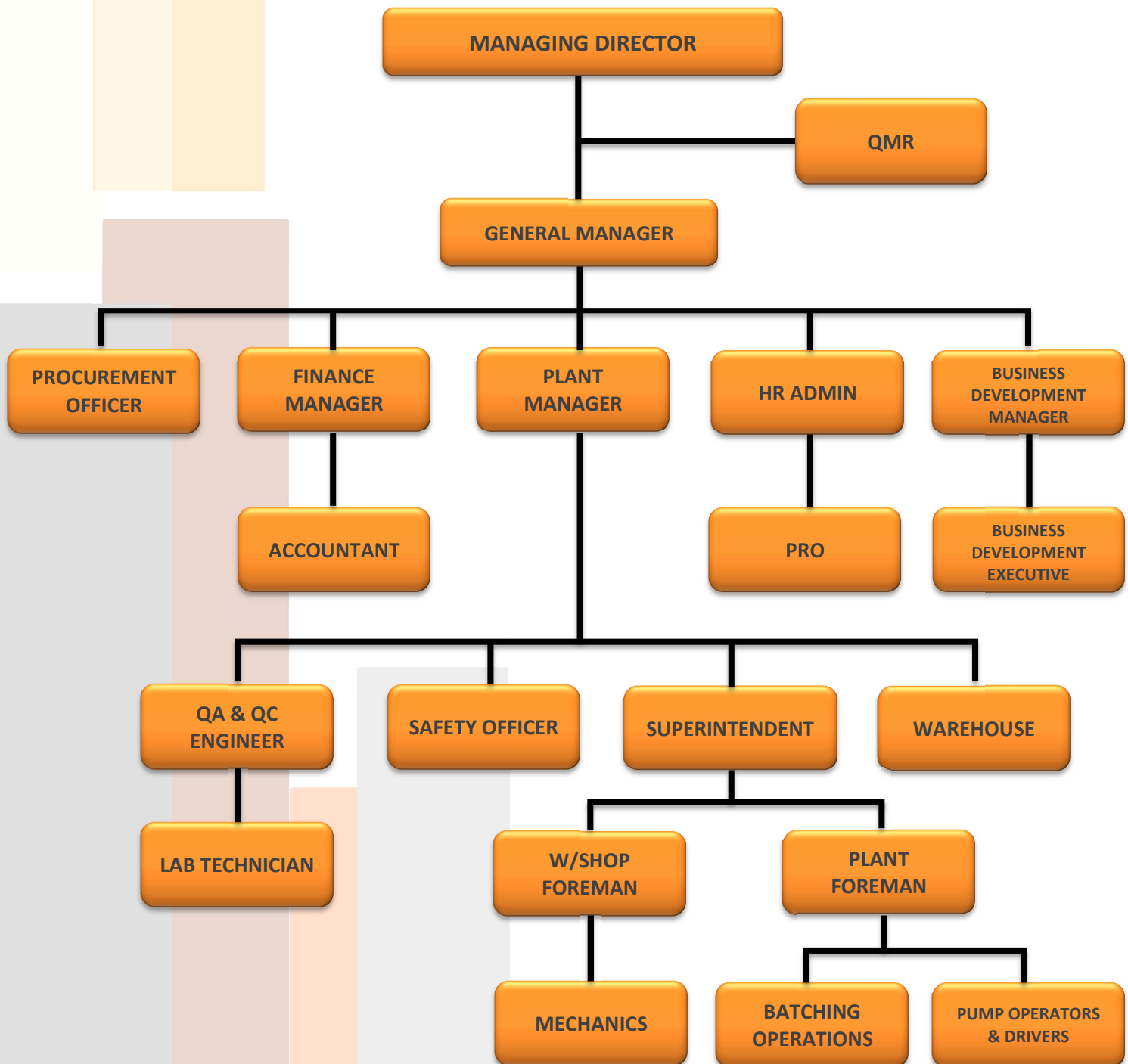
Our appreciation for the need to supply high-quality concrete has never been over emphasized. Raw materials are especially selected from reliable and good quality sources to ensure their compliance with both local and international standards. Our raw materials are transported by the company's own modern transportation fleet. The fact that we have our own crusher plants and transportation fleet provides us with a clear advantage of being able to perfect our delivery timings and services to our customers.

The laboratories at each plant are staffed by highly qualified technical personnel who daily, not only closely monitor the incoming materials but also carry out extensive tests on concrete to ensure its compliance with the relevant specifications. Moreover, Al-Marhoon Ready Mix has embarked on developing its own Research and Development Center that will be staffed by highly qualified materials' engineers who will be monitoring and experimenting the most updated innovations in the concrete world.

Given the quality control capabilities, know-how and history of diversified production in commercial, industrial, residential and governmental projects, Al-Marhoon Ready Mix has been very competitive, reliable and secure in providing a professional service. Our drivers, plant personnel, technicians, sales representatives, engineers and corporate support staff all share a commitment to quality and are available for all aspects of a project, from developing necessary design mixes to trouble shooting concrete-related problems in the field.

Over 30 years of experience and distinguished service and quality, have given Al-Marhoon Ready Mix a solid reputation for being one of the best suppliers of ready- mixed concrete in the area. Through the years to come, the management at Al-Marhoon will be having a very challenging responsibility to fulfill and that is to continue to provide its customers with the same services and quality it has been known for. That can only be achieved by sustaining our investments in our broad knowledge, technical capabilities and experience in the world of concrete.

02. ORGANIZATION CHART



03. PRODUCT & SERVICES

Our aim is to meet the region's building needs and provide relentless support services. To accomplish that, we continually mold our products and services to meet any requirements, overcome challenges and solve problems

Products

The products we provide are the "building blocks" and foundations of construction projects. We specialize in ready-mixed concrete and offer a wide range in related products with added value through our support and services.

Ready-mix Concrete

Ready-mix concrete is a type of concrete manufactured in a factory according to a set recipe, then delivered to a work site. Al-Marhoon Ready mix is the leading producer and supplier of ready-mix concrete in Saudi Arabia.

Mixture precision, reduced worksite confusion our product is supplied to our clientele from any of our factories of our commercial network through the utilization of our large fleet or via project-specific on-site factories.



Concrete Masonry Units

Concrete Masonry Units (CMUs) are also referred to as Cinder Blocks, Cement Blocks, Concrete Blocks or Foundation Blocks. CMUs are made from cast concrete; Portland cement and aggregate. Changing the aggregate, changes the type and use of the CMU.

Quarry Products

A quarry is a type of open-pit mine from which rock or minerals are extracted. Quarries are used for extracting building materials such as dimension stone, aggregate, sand, and gravel. Construction aggregate, more commonly referred to as just aggregate, is a term used describe a wide category of materials used in construction that includes sand, gravel, crushed stone, slag, recycled concrete and geosynthetic aggregates.

Fleet and Equipment

The company's network of factories is serviced by the largest fleet of concrete vehicles and equipment in the Kingdom.

Our fleet consists of the most technologically advanced concrete production and concrete delivery equipment. Furthermore, preventive maintenance systems allow us to keep our equipment in operation and most efficiently. Should the need for maintenance arise, we have strict upgrade and replacement programs for each category of mobile and stationary machinery.

Raw Materials and Transport

With the ultimate goal of enhancing our services, we have established a transport division. The division consists of cement bulkers and trailers with hauling capacity of more than 30% of our cement and aggregate requirements. In essence, the transport division increases productivity and efficiency by bringing the necessary raw materials from their source point directly to our factories.



Supply Chain Management

We deliver the highest standards of service to our clients before, during and after the production and delivery of our products. Our unparalleled service is achieved through a unique supply chain management system that evolved throughout the years and is now instilled in our systems and procedures.

04. OUR STRENGTH



Client servicing

We maintain strong ties with each client, Consistent focus on direction, and a strong commitment to excellence, has resulted in making us one of the leading Ready mix Supplier Companies in the Saudi Arabia. Our expertise ranks us first in the field of Ready mix Supply. We have to our credit, an innovative approach, a commitment to excel in whatever we undertake.

State of the art technology.

We employ the most up to date technology solutions and easily adapt to the challenges posed by evolving standards.

Value product:

We constantly invent solutions and alternatives that enhance value to our clients.

Problem Solving:

Is our forte and we thrive in a challenging climate.

Eco friendly:

We stress preservation of the ecosystem and use eco-friendly materials wherever possible, in order to minimize environmental damage.

05. TECHNICAL INFORMATION

Ready mixed concrete is one of the most versatile and sustainable materials in the construction industry today. Used in the residential, commercial and infrastructure markets, ready mixed concrete meets and exceeds the challenges of the construction industry. New technologies such as high-strength concrete, pervious concrete, self-consolidating concrete and the application of color and texture have increased the appeal of concrete as a building material.



Al-Marhoon ready mix has gained a remarkable recognition by reputable business organizations, who are directly or indirectly involved in the construction industry, as a result of its unwavering commitment to quality and reliable service.

Since its inception, our focus on quality products has always been in the forefront of our business undertakings. With full awareness of factors affecting the quality of ready mixed concrete, Al-Marhoon has adopted a technology- based approach by using state of the art

batch plant and laboratory facilities. We see to it that every single step is carried out perfectly in order to meet the desired compressive strength of concrete through our sophisticated Quality Control and Quality Assurance procedures.

Behind our products, are dedicated people of different technical backgrounds who are painstakingly working day by day, taking every single process that our product has to go through before it reaches the end user. They are highly qualified, organized, and well trained technical personnel who have a common goal, and that is; to achieve the highest level of quality and service while constantly upgrading the production facilities and modern transportation fleets in order to enhance the overall efficiency.

Having a keen eye on quality, our management is confident that we are capable of delivering our products beyond our customers' satisfaction level. This fact is proven by our long list of renowned companies and key players in the construction industry. They have afforded us commendations that fueled Al-Marhoon to succeed in its business endeavor.

Our relationship with our customers is of vital significance, and maintaining such good relationship has given us a constant challenge to aspire for more than what we are presently capable of delivering. This can be certainly achieved by being sensitive to their needs, listening to their feedbacks, emphasizing on the timing of deliveries and assuring that the summed up value of our products and services is a tangible statement of our reputation.

06. SPECIFICATION AND STANDARDS

07. QUALITY CONTROL & QUALITY ASSURANCE

Al-Marhoom Ready Mix takes quality seriously, every single day on every job. The company Quality Control program and Quality Management System is an integrated, proactive system that maximizes the quality of everything we make while measuring that quality against pre-defined benchmark. This department is headed by an experienced Technical & QA/QC Manager to oversee quality and technical issues in accordance to the system.

Other responsibilities of the department includes monitoring the calibration of testing and measuring equipment (laboratory apparatus and equipment, concrete batching plants and weigh bridge – conducted by the independent calibration agency), qualification and selection of raw material sources as well as technical training and education as required.

Applicable tests for the raw materials (fine and coarse aggregates, water, cement/cementitious materials and chemical admixtures) and finished products (freshly mixed concrete and hardened concretes) are carried-out at Premco’s In-house Laboratory in accordance with the international standards, either BS or ASTM. All the test results are recorded in the prescribed forms and kept in the department for reference and any traceability purposes. Our qualified technical team and QA/QC staff ensure that all the raw materials used in the production is sourced from the right or approved supplier to meet the required quality desired.

Concrete is a manufactured product. Specific control tests and evaluations are required during the manufacturing process to produce predictable high-quality concrete. The customer may want to verify that concrete meets specifications. Some of the important properties of concrete that are measured by basic quality control tests are strength, temperature, slump, air content, and unit weight. In general concrete is tested at a frequency of 1 in 150 cubic yards



Each test helps to determine the quality of concrete and it should be performed in accordance with standards. A certified Concrete Field Testing Technician – Grade I, must make the tests.

1. Define the basis of purchase, cubic yards, and how it is measured.
2. Define acceptable material specifications and acceptable industry practice and tolerances.
3. Define strength testing procedures and acceptance criteria.
4. Set laboratory personnel qualifications. The testing laboratory must comply with ASTM C 1077, which is required in ASTM C 94

08. LABORATORY FACILITIES

We have a certified lab team who is on a constant prowl to make sure what we are sending to our customers is a great product.

To help with that service, we have included an in house laboratory to test our concrete and form a database of records for all our mixes.

Our Quality Control team cans also custom design a concrete mix that meets your job specifications.

Local Laboratories

All Al-Marhoon fixed and on-site factories have their own testing laboratories that are properly equipped and staffed for conducting routine tests in line with the company's internationally-approved standards' testing program. Each local laboratory reports to its respective regional laboratory.



Area Laboratories



Area laboratories are located at the main commercial stations in each operational region of the Kingdom. In addition to providing an extended range of testing, area laboratories conduct statistical analysis of local test results, issue monthly reports to Al-Marhoon management, and render technical assistance to the local commercial and on-site factories. All report to the central laboratory.

Central Laboratory

Based in Safwa and directed by Al-Marhoon Technical Manager, the central laboratory is the administrative authority for the company's entire inspection and testing program. Responsibilities include the calibration of testing and measuring equipment, qualification and selection of raw material sources, updating of technical libraries, and the technical training and education conducted by the company's ACI certified technical experts. Moreover, the central laboratory specializes in the development of new products for special applications, and in the evaluation of newly-introduced materials.

Independent Testing

Al-Marhoon employs the services of independent test agencies on a regular basis to ensure compliance with the requirements of specifying authorities and to provide a comparative assessment of the company's own testing accuracy. The independent testing agencies' findings and test results are made available to clients and consultants upon request.



09. COMPETENCY TRAINING

All new employees are given an induction training (to an extent to achieve necessary competence as per their responsibilities) regarding the company's business, quality and safety policies, practices, business and social environment. Quality documents relevant to one's job are issued to the employees, wherever found required. New employees are assigned to an existing employee for "on-the-job" training, to the extent required.

The performance of all employees is evaluated by the reporting superior, at least once in a year; to identify the training need required for the employee. The identified training needs are recorded in the Training Schedule and forwarded to the Plant Manager. The training schedule is reviewed and feasible trainings are provided in-house or in co-ordination with external agencies.

Upon completion of the training, the immediate supervisor inter-acts with the trainee and evaluates the effectiveness of the training. All personnel are trained regarding the QMS being implemented at Al-Marhoon to the extent their position requires. This training is arranged by the Management Representative. The details of the training provided are recorded in the Employee Training Records.

10. MAIN CLIENTS

11. CUSTOMER EVALUATION

12. PURCHASING & SUPPLIER EVALUATION

13. HEALTH SAFETY & ENVIROMENTAL PROTECTION

HEALTH & SAFETY

READY MIXED CONCRETE & MORTAR

APPLICATION

Ready mixed concrete is designed to enable the user to cast the plastic materials into the required shape prior to hardening.

PHYSICAL & CHEMICAL CHARACTERISTICS

Ready mixed concrete is a mixture of aggregate, cement and water. Admixtures may be added to improve product handling characteristics or the properties of the hardened concrete. The resultant mixture is abrasive and alkaline. Please also refer to the attached sheet compiled by the BCA, regarding Chromium, ferrous Sulfate and other reducing Agents.

MAIN HAZARDS

Contact with wet mixes such as concrete **can cause skin diseases:**



Irritant contact **dermatitis** is caused by the combination of the wetness, alkalinity and abrasiveness of the cement mixture.

Allergic contact **dermatitis** is mainly caused by individual sensitivity to chromium compounds which may occur in cement

Cement burn, a form of **skin ulceration**, may result from contact with freshly mixed concrete.

The surface treatment and cutting of hardened concrete can create dust which may contain quartz. If inhaled in excessive quantities over extended periods, respirable dust containing quartz can constitute a long term health hazard.

PRECAUTIONS

Direct skin contact with wet concrete should be avoided. It is also important not to kneel or sit on the wet material as harmful contact can occur through saturated clothing. Inhalation of concrete dust should be avoided.

PROTECTIVE EQUIPMENT

Protective clothing should be worn when handling wet concrete, particularly on the arms, hands, legs and feet: e.g. long sleeved clothing and gloves, with full length trousers and impervious boots.

Respiratory protective equipment should be worn during the surface treatment or cutting of hardened concrete where dust is generated.

TRANSPORTATION AND WASTE DISPOSAL

The carriage of concrete is not subject to hazardous substance conveyance regulations and vehicle labeling is not required. In the event of spillage, entry of material to water courses should be avoided.

Unused hardened concrete is inert but should be disposed of in accordance with local legal requirements.

STORAGE

The hardening of concrete may be delayed, extending the period during which the precautions given above should continue to be taken and during which access by unauthorised persons should be prevented.

EMERGENCY ACTION

- ▶ Where skin contact occurs with wet concrete, either directly or through saturated clothing, the concrete must be washed off quickly.
- ▶ Where eye contact occurs the area must be immediately and thoroughly irrigated with water.
- ▶ In all cases of doubt, or where symptoms persist, medical advice should be obtained.

SAFE HANDLING OF READY-MIXED CONCRETE

WARNING

Prolonged skin contact with fresh (wet) concrete may cause:

- Cement burns (as the alkalis from cement reduce sensitivity of the nerves, you may not initially feel pain or be aware that damage is being done)
- Irritant or allergic dermatitis (short and long term problems)

HANDLING

Fresh concrete is heavy (approximately 2.5 tonne per cubic metre) and this may cause physical injury if you are not used to manual labour or if handling precautions are not taken

PREVENTION IS SIMPLE

Avoid direct contact with wet concrete

Do not sit or kneel on the wet concrete as harmful contact can occur through saturated clothing

Wear appropriate protective clothing, e.g. rubber boots, waterproof clothing, gloves, goggles

Have sufficient help so that you can place, compact and finish the concrete without straining yourself and before it sets

IF THINGS GO WRONG

- If clothing becomes saturated, remove and wash yourself with clean water and soap. Do not put the saturated clothing back on
- If concrete gets into your rubber boots, remove and wash yourself and the boots with clean water. After washing out, you may continue to wear the boots, preferably when dry
- If concrete gets splashed into your eyes, wash out immediately with plenty of clean water and then seek medical advice as soon as possible
- If you have ignored all the above advice and start to experience any discomfort which could be attributed to having been in contact with fresh concrete, seek medical advice as soon as possible

HOUSE KEEPING