

# Corporate Information



## LA Head Office :

23326 Hawthorne Blvd., Suite 390, Torrance, CA 90505  
Tel. (310) 791-5600 Fax. (310) 791-7754  
Contact: S. Y. Choo ([choosytc@ycctechnology.com](mailto:choosytc@ycctechnology.com))



## Houston Office :

1600 Wilcrest, Suite 36, Houston, TX 77042  
Tel. (832) 794-3994 Fax. (412) 291-1305  
Contact: Carlos Orozco ([COrozco1842@msn.com](mailto:COrozco1842@msn.com))



## DaeJeon Office, Korea :

538-8 BongMyung-Dong, YouSeong-Gu, DaeJeon, Korea  
Tel. (+82) 42-823-2873 Fax. (+82) 42-823-2874



## DaeGu Office, Korea :

(2nd Floor)1224-6 Ligok-Dong, DalSeo-Gu, DaeGu, Korea  
Tel. (+82) 53-584-2880 Fax. (+82) 53-593-3886



## Casting Upgrade Facility, Korea :



## Busan Office, Korea :

Phoenix Building #505  
318-14 Daechung-Ri, Janyu-Myun, Kimhae, Korea  
Tel. (+82) 70-4193-3882 Fax. (+82) 55-337-3882

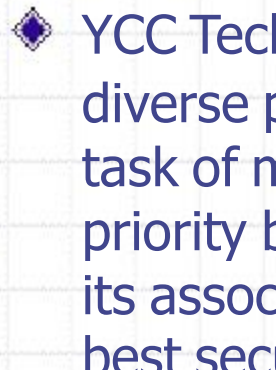
- Pattern Warehouse:**

Located at Cheonan & Chungju



## 2. Business

- ◆ Established in 1990, YCC Technology, Inc. provides an one stop source for procurement of major industrial plant equipment, OEM products and components for power generation, oil & gas processing, petrochemical, marine and offshore along with general industries on a global basis.
- ◆ Based in California, Texas, and Korea, YCC Technology serves the world prominent project owners & developers, manufacturers and international engineering & construction contractors for their diverse array of challenging projects worldwide.

- 
- ◆ YCC Technology represents most qualified manufacturers of diverse project equipment and products in South Korea. The task of maintaining high quality and timely delivery is given top priority by joint project execution team of YCC Technology and its associate manufacturers while the economy of project cost is best secured within the customer's budget.
  - ◆ The professionalism and devotion extended to major world capital projects for the past decade will be the proud tradition of YCC Technology and we are determined to further develop the tradition to become the norm of the industry

# 3. Products

## 3-1. Equipment

- A. **Process Industry** : Reactors, Towers, Columns, Drums, Multi-Wall Pressure Vessels, Converters, Evaporators, Coolers, Separators, Deaerators, Absorbers, Crystalizers, Scrubbers, Tanks, Feed Water Heaters, Skid and Piping Modules, Manifolds, Heat Exchangers, Generators, Electric Motors
- B. **Power Industry** : Hydro Turbine Equipment, Heat Recovery Steam Generators, Steam Drums, Condensers, Heaters, Pressurizers, Heat Exchangers, Deaerators, Turbine Castings, Valves, Fittings, Generators, Industrial Boilers, Heavy Electro-Electric Equipment, Equipment for NSSS (Nuclear Steam Supply System), Wind Mill Columns
- C. **Marine+Offshore Industry** : Propulsion System, Rudders, Hull Castings, Generators, Switch Board, Pumps, Transformers, Motors, Cranes, Deck Machinery, Offshore Process Modules

## 3-2. Products

Steam & Gas Turbine Castings, Hydro Turbine Castings, Compressor, Pumps, Valves, Gears & Reduction Gears, Lub Consol, Inter Cooler, Heat Exchanger, Electric Motor and Etc for all industrial

## 3-3. Components (Materials)

### A. Cast Products:

- ASTM A48 Gray Iron Castings Up to 160,000 lbs
- ASTM A536 Ductile Iron Castings Up to 160,000 lbs
- ASTM A439 Austenitic Ductile Iron Castings Up to 120,000 lbs
- ASTM A216 WCB-WCC Steel Castings Up to 250,000 lbs
- ASTM A352 LCB, LC1, LC2, & LC3 Up to 250,000 lbs
- ASTM A389 GR C23 & C24 Up to 250,000 lbs
- ASTM A217 WC1-11 & C5-CA15 Up to 250,000 lbs
- ASTM A743 Iron-Chromium-Nickel Up to 40,000 lbs  
(Type CF8, CF8M, CF3, CF3M, CA15, CA6NM)
- ASTM A890 Duplex (1A, 1B, 1C, 2A, 3A & 4A) Up to 40,000 lbs
- Super Duplex (5A, & 6A) Up to 15,000 lbs
- ASTM B148 Gr. C95200 Al-Bronze Alloy Up to 10,000 lbs
- C95800 Nickel-Al-Bronze Alloy Up to 10,000 lbs
- MONEL & INCONEL

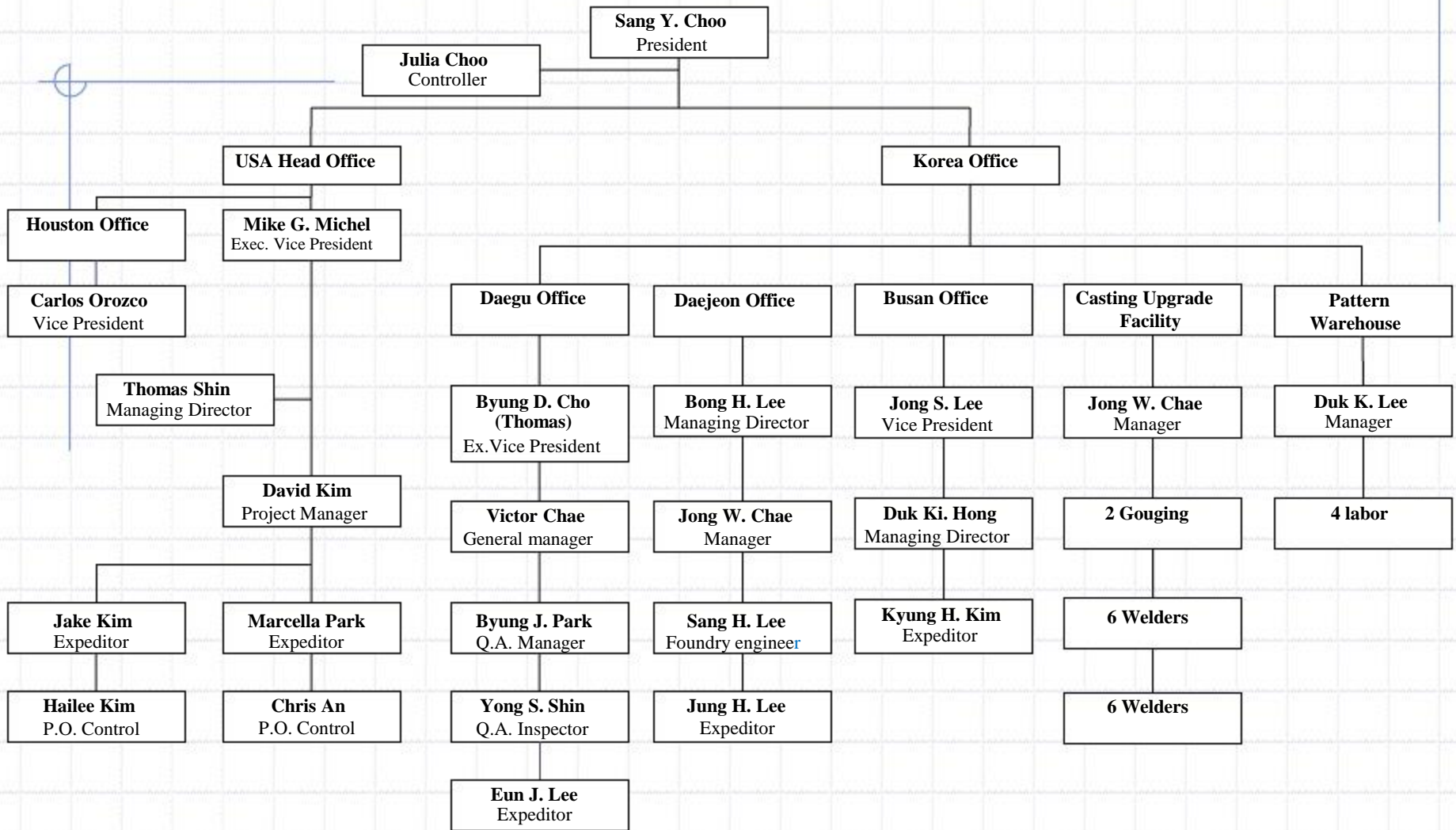
B. Forged Products:

- Carbon, Low Alloy, Stainless Steel, Up to 200,000 lbs  
Super Duplex

C. Fabricated Products:

- Carbon Steels, 316/316L Stainless Steels with Stainless  
Overlays(Cladding) To ASME U, U2, N, NPT, NA and R Stamps
- Super Duplex materials I.e. SA240 UNS32750 Materials with Avesta  
2570/P100 Filler Materials
- Aluminum-Bronze, Nickel-Al-Bronze Plate with Cast Flange Materials

# 4. Overall Organization Chart of YCC Tech



## YCC Techology Major Consortium Suppliers

### Foundries

Company Name	Maximum Capacity	Monthly Capacity	Monthly Capacity for Pump Casting	Material	Products	Special Equipment	Remarks
<i>* Steel Foundries</i>							
Sekang M-Tek	Up to 17 Tons	500 - 600 Tons	150 - 200 Tons	WCB, LCB, WC6-9, CA6N M, CF8/3M, Duplex, Super Duplex	All Types Horizontal & Vertical_Single & Double Suction_Split Case, Single & Multi-Stage, Casings & Impellers, and All Vertical Pump Components	15 Ton Argon Purger, Vacuum DeGasing, Large Quenching Tank for Solution Annealing_H/T for Super Duplex	
Wonkang Metal Co.	Up to 18 Tons	500 - 600 Tons	200 - 250 Tons	WCB, LCB, WC6-9, CA6N M, CF8/3M, Duplex, Super Duplex	All Types Horizontal & Vertical_Single & Double Suction_Split Case, Single & Multi-Stage, Casings & Impellers, and All Vertical Pump Components	15 Ton VOD, Large Quenching Tank for Solution Annealing_H/T for Super Duplex	
Daejin Metal Co.	Up to 14 Tons	500 - 600 Tons	60 - 80 Tons	WCB, LCB, WC6-9, CA6N M, CF8/3M, Duplex, Super Duplex	All Types Horizontal & Vertical_Single & Double Suction_Split Case, Single & Multi-Stage and All Vertical Pump Components	10 Ton AOD, Large Quenching Tank for Solution Annealing_H/T for Super Duplex	
DMG Co.	Up to 2 Tons	150 - 200 Tons	40 - 50 Tons	WCB, LCB, WC6-9, CA6N M, CF8/3M, Duplex, Super Duplex	All Type Vertical_Single & Double Suction_Split Case, Single Stage Casings, Impellers, Bearing		



Company Name	Maximum Capacity	Monthly Capacity	Monthly Capacity for Pump Casting	Material	Products	Special Equipment	Remarks
<i>* Iron Foundries</i>							
KorTec	Up to 18 Tons	400 - 500 Tons	300 Tons	Gray Iron, Ductile Iron, Ductile Ni-Resist	LNN, LPN, Bowl, Bell, Dis. Elbow, Column		
GunWoo Metal Co.	Up to 4 Tons	200 - 300 Tons	80 - 100 Tons	Gray Iron, Ductile Iron, Ductile Ni-Resist	Bowl, Bell, Dis. Head		
Woosung Metal Co.	Up to 20 Tons	300 - 400 Tons	100 - 150 Tons	Gray Iron, Ductile Iron, Ductile Ni-Resist	LNN, LPN, Bowl, Bell, Dis. Elbow, Column		
<i>* Bronze Foundries</i>							
Kas Metal Co.	Up to 4 Tons	150 - 200 Tons	50 - 60 Tons	All Type of Bronze Alloy Materials	All Types Horizontal & Vertical_Single & Double Suction_Split Case, Single Stage, Casings & Impellers, and All Vertical Pump Components		
Yeon Kum Sa	Up to 10 Tons	200 -300 Tons	100 - 150 Tons	All Type of Bronze Alloy Materials	All Types Horizontal & Vertical_Single & Double Suction_Split Case, Single Stage, Casings & Impellers, and All Vertical Pump Components		

## Fabrication Shops

Company Name	Max. Capacity	Products	Material	Rem
IL JIN Machinery Co.	250 Tons / Unit	Vertical Pump Discharge Heads, Bowls-Casings , Suction Bells, Etc.	Carbon Steels, Stain Steels, Duplex Steels, Su per Duplex Steels, Bronze Alloys	
Tau Plantec	50 Tons / Unit	Vertical Pump Discharge Heads, Bowls-Casings , Suction Bells, Etc.	Carbon Steels, Stain Steels, Duplex Steels, Su per Duplex Steels, Bronze Alloys	
KeonLim Engineering	120 Ton / Unit	Vertical Pump Discharge Heads, Bowls-Casings , Suction Bells, Etc.	Carbon Steels, Stain Steels, Duplex Steels, Su per Duplex Steels, Bronze Alloys	

## Forging Shops

Company Name	Max. Capacity	Products	Material	Rem
Taewoong	200 Tons / Unit	Bar, Shaft, Rings, Tubes, Plates, Shells, Etc.	Carbon Steels, Stain Steels, Duplex Steels, Su per Duplex Steels, Bronze Alloys	
MYSCO	150 Tons / Unit	Bar, Shaft, Rings, Tubes, Plates, Shells, Etc.	Carbon Steels, Stain Steels, Duplex Steels, Su per Duplex Steels, Bronze Alloys	

## Machine Shops

Company Name	Equipment List
IL JIN Machinery Co.	CNC VERTICAL TURNING MILL - 7 Meter Swing x 5 Meter Height x 2 Units CNC VERTICAL TURNING MACHINE - 6 Meter Swing x 3.5 Meter Height x 1 Unit CNC PLANER MILL - 4 Units CNC TABLE TYPE & FLOOR TYPE HORIZONTAL BORING MACHINES - 3 Units
D.S. Tech	CNC HORIZONTAL BORING MACHINE - 1 Unit NC PLANER MILL - 1 Unit VERTICAL TURNING MACHINE, 3.5 Meter Swing x 2 Meter Height x 1 Unit <b>NEW CNC BOUBLE TABLE VERTICAL TURNING MACHINE, 1 Meter Swing x 0.8 Meter Height x 1 unit</b>
SHINA MACHINE	CNC VERTICAL LATHE - 6 Units CNC VERTICAL MILL - 4 Units CNC HORIZONTAL BORING MACHINE - 6 Units CNC PLANER MILL - 1 Unit
KODIVAC MACHINE	CNC HORIZONTAL BORING MACHINE - 1 Unit CNC VERTICAL MACHINING CENTERS - 7 Units CNC HORIZONTAL MACHINING CENTERS - 3 Units CNC PLANER MILL - 1 Unit
Tau Plantec	CNC PLANER MILL - 2 Units CNC HORIZONTAL MACHINE - 2 Units CNC VERTICAL LATHE - 1 Unit
DONG SAN MACHINE	CNC PLANER MILL - 1 Unit CNC HORIZONTAL FLOOR TYPE BORING MACHINE - 2 Units CNC HORIZONTAL BORING MILL - 1 Unit CNC VERTICAL TURNING MACHINE - 1 Unit CNC VERTICAL TURN MILL - 2 Units

# Reference Pictures

## I. Casting

### A. Turbine Components of Steam, Gas and Hydro Turbines

#### \* HP Inner Casing



**\* HP Outer casing, LP Inner Casing and RP Case**



**Turbine HP Outer Casing**



**Turbine LP Inner Casing**



2009/07/09



2009/07/13

## \* Turbine Casing and Stop Valve



• HIGH PRESSURE TURBINE CASING



• MAIN STOP VALVE

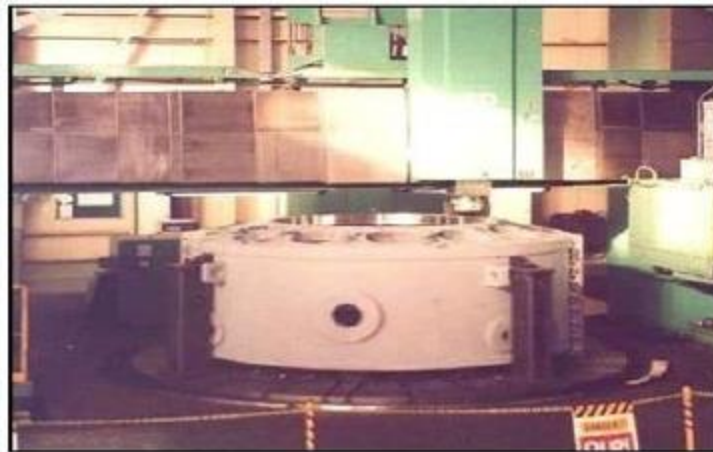
## \* Gas Turbine Casing, Diffuser and Wrapper



Gas Turbine Casing

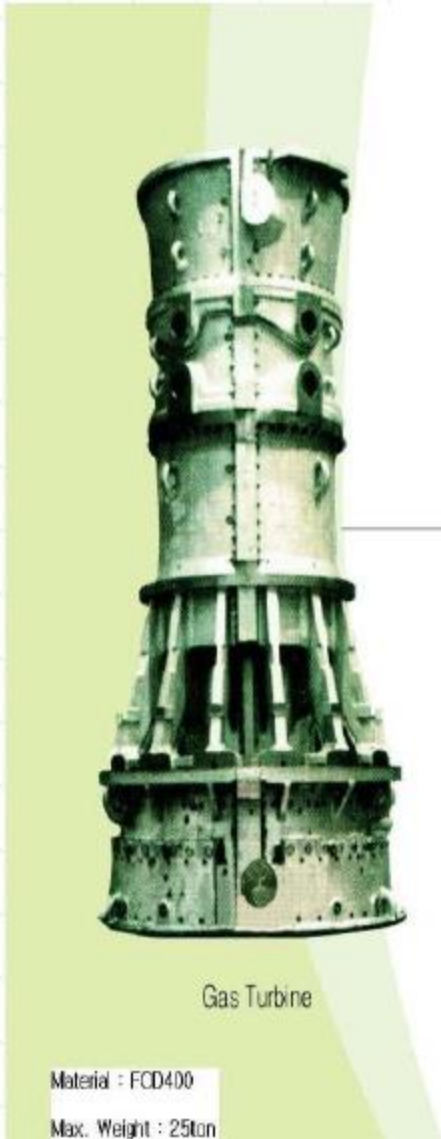


Gas Turbine Diffuser



Gas Turbine Wrapper

## \*Gas Turbine Components



7E Compressor Case



6B Discharge Case



7E Turbine Shell



7FA Inlet Case Lower



7FA Inlet Case Upper



7E Inlet Case Upper



7E Inlet Case Lower

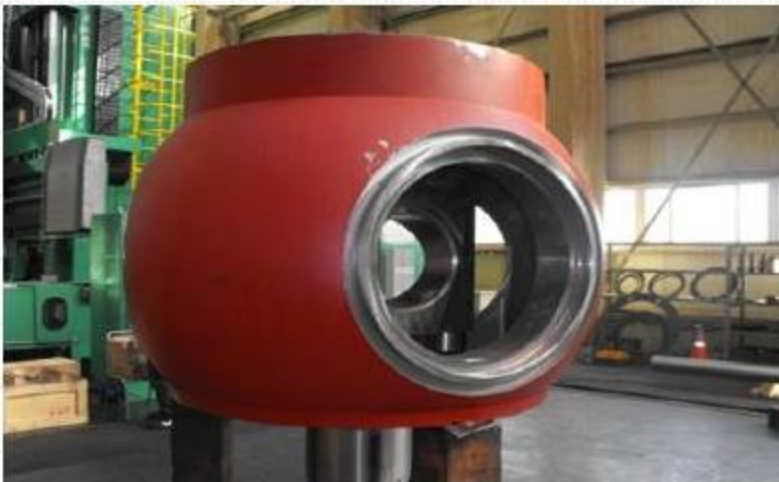




## \*Runner Hub for VOITH HYDRO



**\*Hydro Turbine Compnenets(VOITH HYDRO, USA)**



**RUNNER HUB: A148 Gr.80/50**

**\*Hydro Turbine Compnenets(VOITH HYDRO, USA)**



**BUSHING HOUSING: A536 Gr.60-40-18**



**WICKET GATE: A487 Gr.CA6NM Cl.A**



**PISTON CARRIER: A216 Gr.WCC**



**PISTON CARRIER: A216 Gr.WCC**

**\*Hydro Turbine Compnenets(VOITH HYDRO, USA)**



**UPSTREAM FLANGE: A182 Gr.F304(Forged)**



**UPSTREAM FLANGE: A182 Gr.F304(Forged)**



**DOWNSTREAM FLANGE: A182 Gr.F304(Forged)**



**UP/DOWNSTREAM FLANGE: A182 Gr.F304(Forged)**

**\*Hydro Turbine Compnenets(VOITH HYDRO, USA)**



**UPSTREAM EXTENSION with PRESSURE HEAD: A516 Gr.70 & A537 Cl.2(Fabricated)**

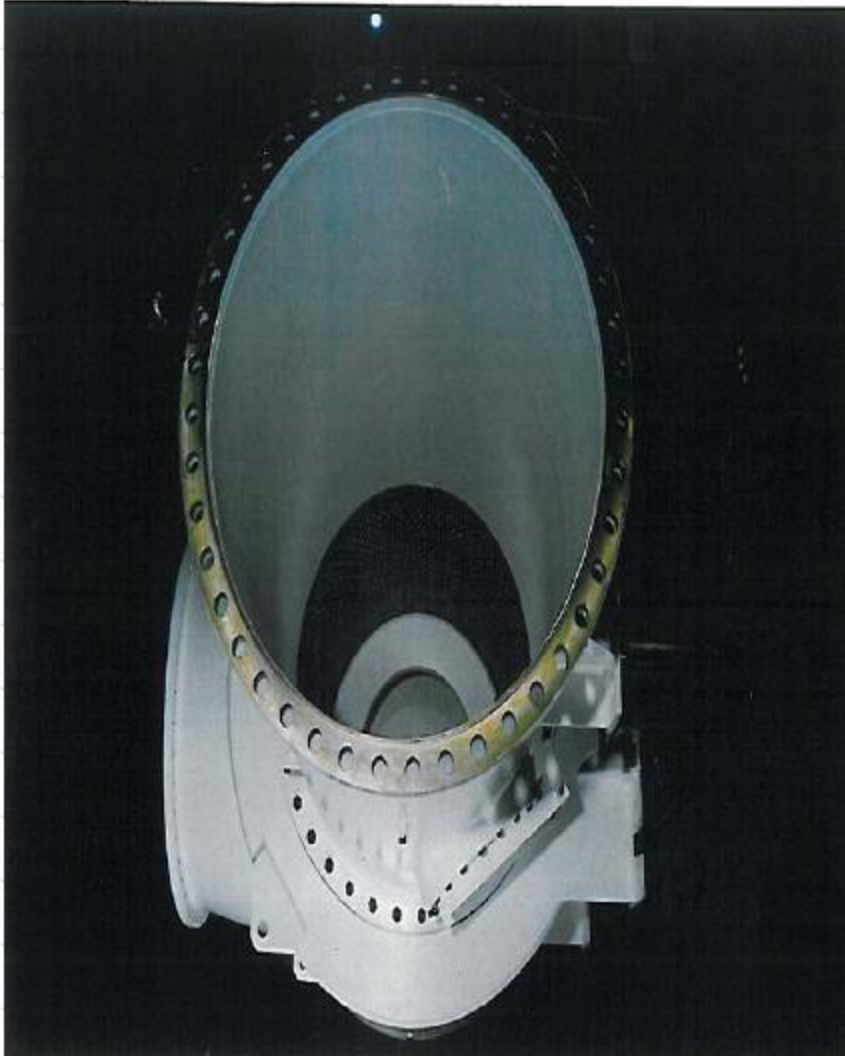


**PRV VALVE BODY & INNER CONE: A216 Gr.WCC**



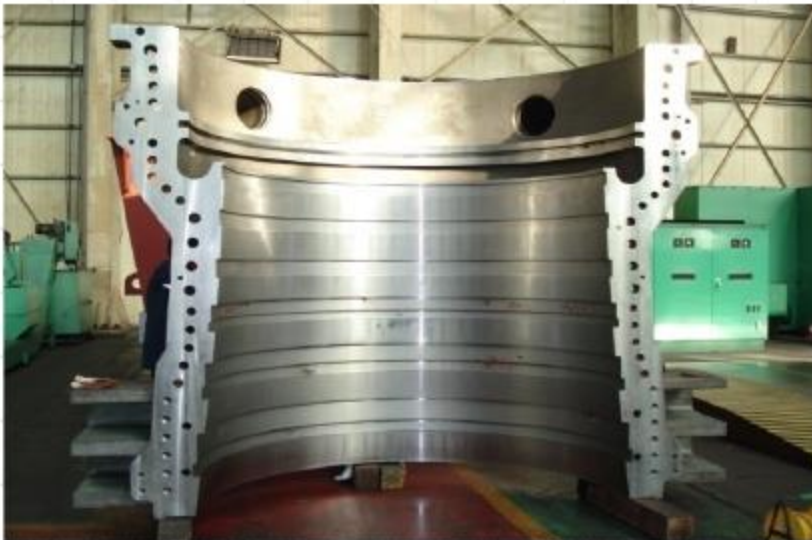
**RUNNER CROWN: A743 Gr.CF3**

**\*Sleeve Valve for Hydro-Dam**

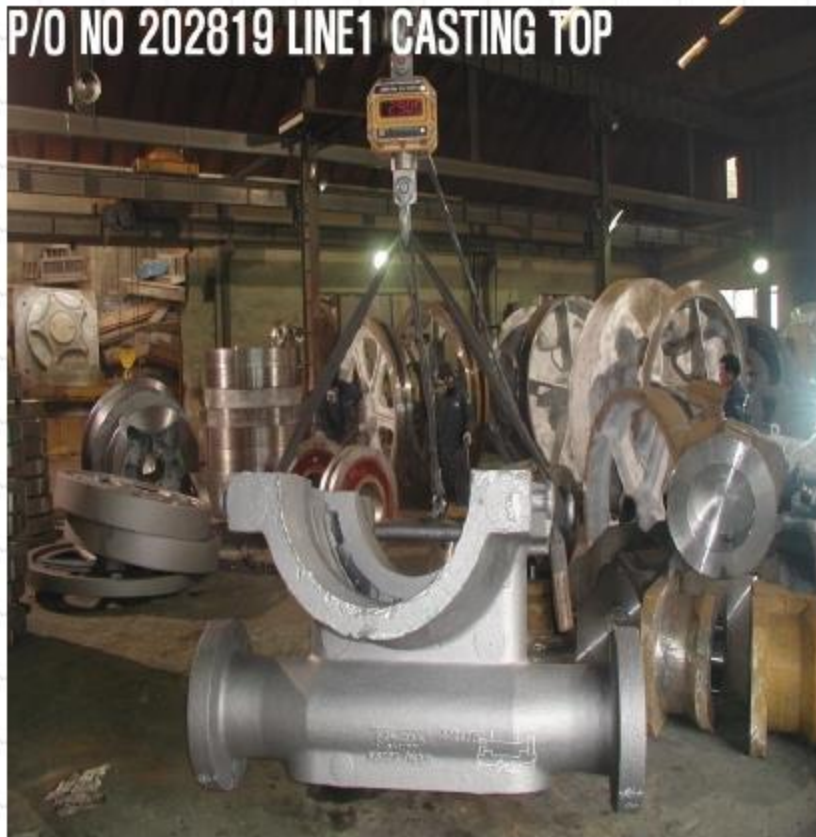


## B. Compressor Components

### \*Gas Turbine Compressor Cylinder for SIEMENS

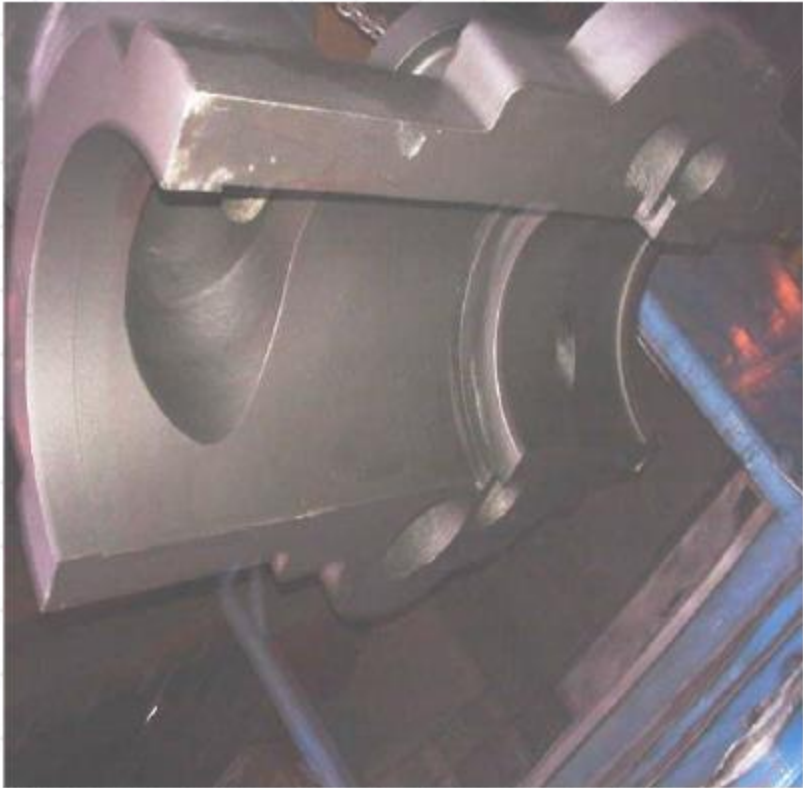


**\* Steam End for ELLIOTT**





## \*Multi Nozzle Casing



**\* Steam Turbine Compressor for ELLIOTT**



## C. Wind Mill Components

### \*Rotor Hub & Main Frame



## D. Pump Castings

### \*1000LNN1075 Double Suction Pump Casing of FLOWSERVE



**\*Sulzer Pumps Multi-Stage Casing - ASTM A890 Gr.1C**



# \*Reference Pictures of Multi-Stage Casing



Super Duplex



ASTM A743 CF3M

**\*Sulzer Pumps Horizontal Split Casing - ASTM A216 Gr.WCB**



**\*Split Casing for Sulzer**





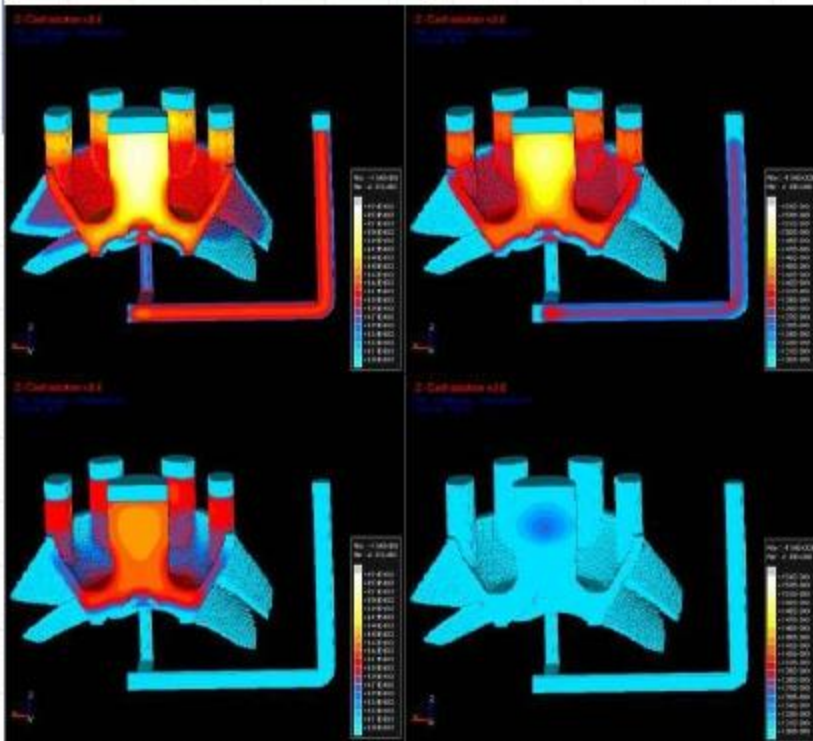
**\*Process Pump Casing & Cover for Oil & Gas Ind. for Flowserve Pump Div.**



## \* Casing & Cover – CE3MN & Gr.6A



## \* Simulation-Z cast



**\*Bowl(23KK) – Super Duplex**



**\*Impeller – CA6NM, CF8M, Duplex**



**\*Ceramic Impeller**



**\*46QL Pumps for Flowserve Pump Div. – Large Duplex casting**



**\*ITT-Flygt 108x78 Diffuser - ASTM A351 Gr.CF3M**



**\*Sulzer Pumps 70YMS Bowl - ASTM A890 Gr.1A(Duplex)**





**\*Bowl & Bell for Sulzer – Ductile Ni-Resist**

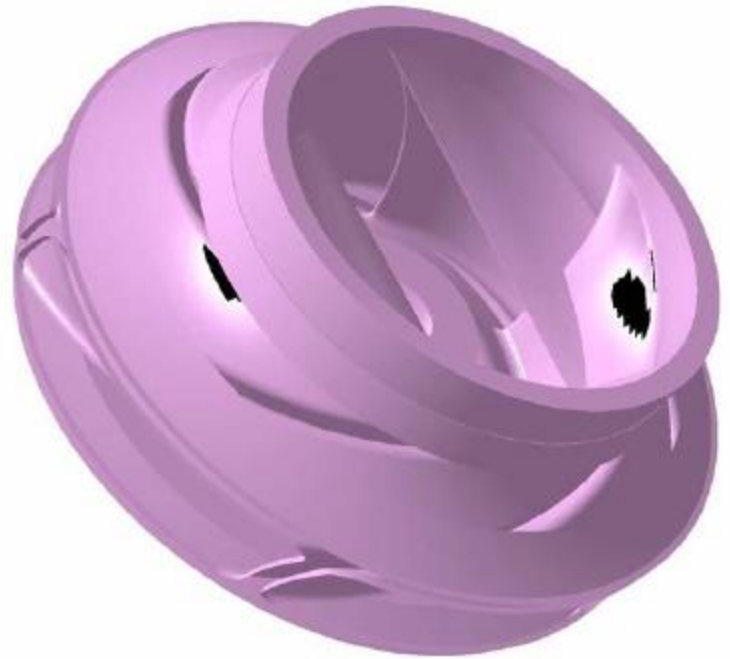
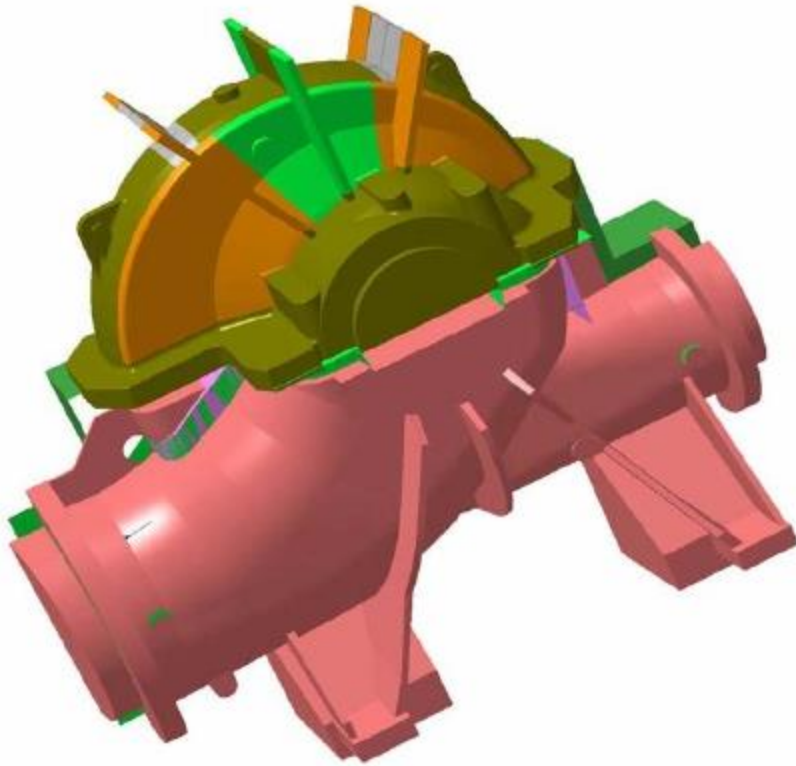


## \*ASTM B148 C95800 Ni-Al-Bronze - Pump Components



## **\*3D MODELING DRAWINGS for PATTERN**

- We are using 3 axis or 5 axis profiling machine for making hydraulic vane or volute pattern.



## II. Forging

### Wind Energy Industry

Tower Flange

Gear Rim

Rotor Shaft



### Heat Exchanger, Pressure Vessel, Boiler, Reactor

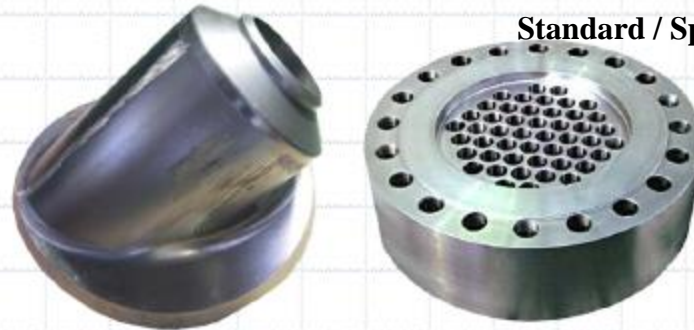
for Chemical Plant, Electric Power Plant

Standard / Special Flange

Nozzle

Tube Sheet

Forged shell



### Shipbuilding / Industrial Part

Rudder Stock, Pintle

Piston Rod, Piston Crown

Connecting Rod

Cylinder Cover

Shaft (Propeller, Intermediate, Roll)



### Turbine for Power Generator

Inner Web

Outer Ring (HALF-RING)



Customers

TOSHIBA, Doosan Heavy Industry

## \* Main Shaft Inspection and Packing



P.M.I



Ultrasonic Test



Magnetic Test



Roughness  
Test



Packing

### III. Fabrication

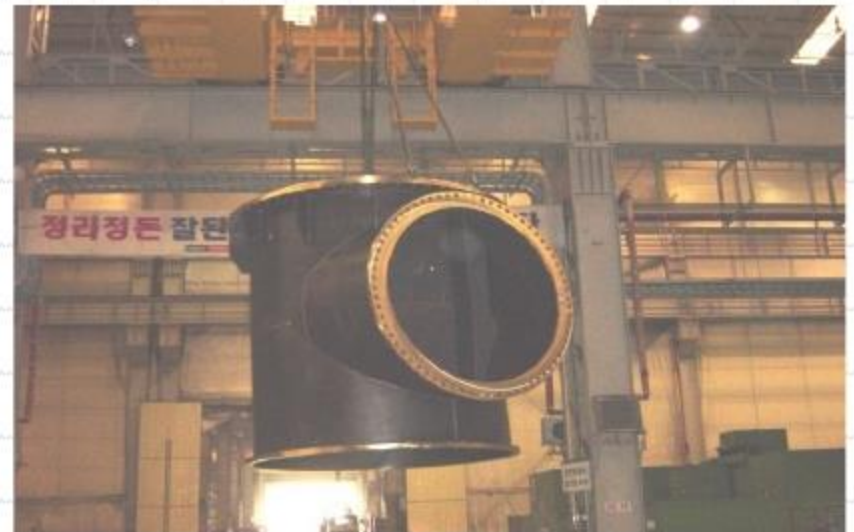
#### \*Combustor Cylinder for SIEMENS



## \*Turbine Cylinder for SIEMENS



**\*Discharge Head – Ni-Al-Bronze**





\*Discharge liner



## \*Reducer & Suction Bell

