



MORTON BUILDINGS, INC.
P.O. BOX 399
MORTON, IL 61550-0399
309-263-7474

ALMEZ, L.L.C.
OWATONNA, MN



DRAWN BY: 832 TD
DATE: 12/20/04
CHECKED BY: ADAM
DATE: 1/17/05
REVISED DATE: 03/03/05
REVISED DATE:
REVISED DATE:
REVISED DATE:

STATE OF MINNESOTA
WAYNE W. NOWLAN
21964
LICENSED ARCHITECT

SCALE: AS NOTED
SHEET NO.
A2 OF A4

ROOM FINISH SCHEDULE

ROOM NUMBER	DESCRIPTION	NOMINAL SIZE	CEILING HEIGHT	FLOOR FINISH	BASE TRIM	WALL FINISH	CEILING FINISH	ROOM NUMBER
101	OFFICE	15'6x12'0"	9'-0"	COMM. CARPET	6" VINYL	1/2" GYP. BD., TAPED, PRIMED & PAINTED	2"x2" SUSPENDED ACOUSTICAL TILE	101
102	VESTIBULE	9'3x5'0"	9'-0"	1/8" COMM. VCT	6" VINYL	1/2" GYP. BD., TAPED, PRIMED & PAINTED	2"x2" SUSPENDED ACOUSTICAL TILE	102
103	CORRIDOR	42" WIDE	9'-0"	CERAMIC TILE	6" CERAMIC	1/2" GYP. BD., TAPED, PRIMED & PAINTED	2"x2" SUSPENDED ACOUSTICAL TILE	103
104	RECEPTION	26'8x23'2"	9'-0"	CERAMIC TILE	6" CERAMIC	1/2" GYP. BD., TAPED, PRIMED & PAINTED	2"x2" SUSPENDED ACOUSTICAL TILE	104
105	MEN'S	6'8x7'3"	9'-0"	SHEET VINYL	6" VINYL	MOIST. RESISTANT 5/8" GYP. BD., TAPED, PRIMED & PAINTED	2"x2" SUSPENDED ACOUSTICAL TILE	105
106	WOMEN'S	6'8x7'3"	9'-0"	SHEET VINYL	6" VINYL	MOIST. RESISTANT 5/8" GYP. BD., TAPED, PRIMED & PAINTED	2"x2" SUSPENDED ACOUSTICAL TILE	106
107	LOCKER ROOM	14'6x14'0"	9'-0"	SHEET VINYL	6" VINYL	1/2" GYP. BD., TAPED, PRIMED & PAINTED	2"x2" SUSPENDED ACOUSTICAL TILE	107
108	OFFICE/BREAK ROOM	15'0x16'0"	9'-0"	1/8" COMM. VCT	6" VINYL	1/2" GYP. BD., TAPED, PRIMED & PAINTED	2"x2" SUSPENDED ACOUSTICAL TILE	108
109	MANUFACTURING	79'0x118'0"	19'-8"	SEALED CONC.	STEEL TRIM	POLY STEEL LINER W/ TOP 8'-0" TO BE ACOUSTICAL	POLY STEEL LINER	109

DOOR SCHEDULE

DOOR #	QTY	SIZE	STYLE	TYPE	FIRE RATING	GLAZING	FRAME	TRIM	CLOSER	HARDWARE	DOOR #
1	3	3068	INSULATED STEEL	F	NONE	N/A	PULTRUDED FIBERGLASS	STEEL TRIM	YES	INTERCONNECTED LEVER LOCKSET & DEADBOLT	1
2	2	3070	COMMERCIAL GLASS ENTRY	N	NONE	TEMPERED SAFETY	ANODIZED ALUMINUM	PAINTED STEEL FRAME	YES	PUSH/PULL W/ADAMS EXIT PADDLE	2
3	4	3068	INTERIOR	F	NONE	N/A	PRE-HUNG	WRAP W/GYP. BD.	NO	KEYED LEVER LOCKSET	3
4	2	3068	INTERIOR	F	NONE	N/A	PRE-HUNG	WRAP W/GYP. BD.	NO	PRIVACY LEVER LOCKSET	4
5	4	12x16	SECTIONAL OVERHEAD DOOR	NONE	N/A	N/A	STD. HEADROOM TRACK	STEEL TRIM	NO	ELECTRIC OPERATOR W/JAMB PROTECTORS	5

WINDOW SCHEDULE

WINDOW #	QTY	SIZE	MANUF.	STYLE	CATALOG #	GLAZING	FRAME	TRIM	ACCESSORIES	WINDOW #
1	4	53x35	PELLA	CASEMENT	PCC2141-3	INSULSHIELD	ALUM CLAD WOOD	WRAP W/GYP. BD.	SLIMSHADES	1

NOTE:
IDENTIFIES ITEMS THAT ARE NOT PROVIDED BY MORTON BUILDINGS, INC. OR MORTON BUILDINGS' SUBCONTRACTORS AND ARE THE OWNERS RESPONSIBILITY.



NOTE:
1.) EXTERIOR WINDOW & WALKDOOR LOCATIONS ARE DIMENSIONED FROM THE EXTERIOR OF THE BUILDING COLUMN TO THE CENTERLINE OF THE WINDOW OR WALKDOOR UNIT.
2.) STUDWALLS ARE TO BE 2x4'S @ 16" O.C., UNLESS SPECIFIED OTHERWISE.
3.) THE GYPSUM BOARD WILL HAVE (1) COAT OF PRIMER AND (2) COATS OF PAINT UNLESS SPECIFIED OTHERWISE.

2"x6" STUDWALL @ 16" O.C.

EXIT REQUIREMENTS

NUMBER AND ARRANGEMENT OF EXITS

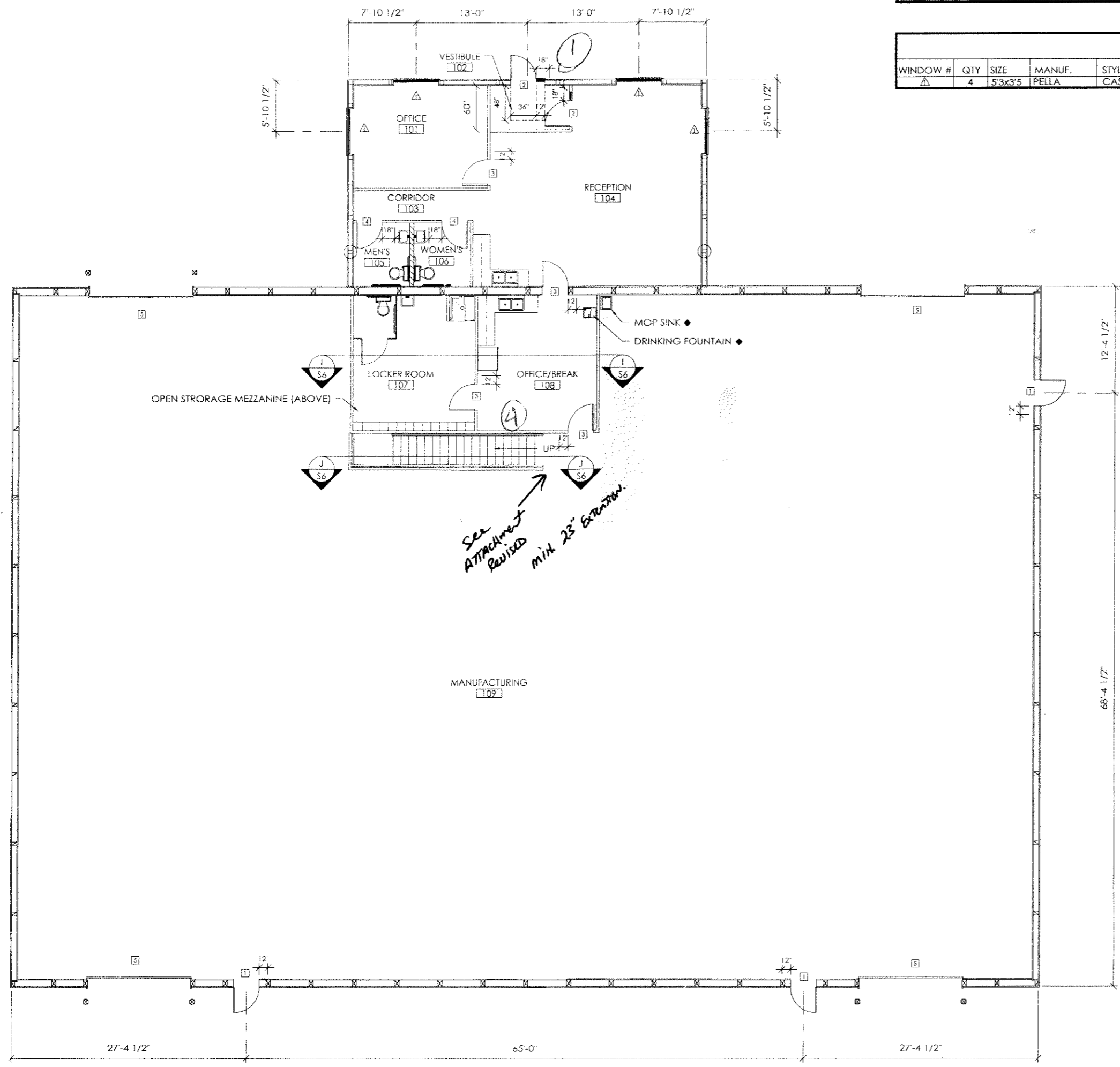
FLOOR ROOM OR SPACE DESIGNATION	MINIMUM NUMBER OF EXITS		TRAVEL DISTANCE		ARRANGEMENT MEANS OF EGRESS ¹ (SECTION 1004.11)	
	REQUIRED	SHOWN ON PLANS	ALLOWABLE TRAVEL DISTANCE (TABLE 1004.2.4)	ACTUAL TRAVEL DISTANCE SHOWN ON PLANS	REQUIRED DISTANCE BETWEEN EXIT DOORS	ACTUAL DISTANCE SHOWN ON PLANS
OFFICE	1	1	75'	63	NA	NA
MANUFACTURING	2	2	200	148	71	76

¹ Compare egress ends (Section 1004.3.2.3)
² Single exits (Table 1004.2.2)
³ Common Path of Travel (Section 1004.2.5)

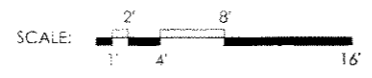
EXIT WIDTH

USE GROUP OR SPACE DESCRIPTION	(a) AREA sq. ft.	(b) AREA PER OCCUPANT (TABLE 1003.2.2)	EGRESS WIDTH (n)					
			(c) PER OCCUPANT (SECTION 1003.2.3)		(d) ACTUAL WIDTH SHOWN ON PLANS			
			STAIRS	LEVEL	STAIRS	LEVEL		
OFFICE	1,276	100	NA	2	NA	2.55	NA	32
MANUFACTURING	9,322	100	NA	2	NA	18.44	NA	64

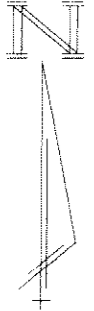
¹ See Table 1003.2.2 to determine whether net or gross area is applicable.
² See definition "Area, Gross" and "Area, Net" (Section 1002)
³ The multiplier increase per Section 506.3 is as follows:
c. Multi-story building = 200 percent
d. Single-story building = 300 percent
⁴ Minimum stairway width (Section 1003.3.3); min. corridor width (Section 1004.3.2.2); min. door width (Section 1003.3.1)
⁵ Minimum width of exit passageway (Section 1005.3.3)
⁶ The loss of one egress shall not reduce the available capacity to less than 50 percent of the total required (Section 1003.2.3)
⁷ Assembly occupancies (Section 1006)



INTERIOR LAYOUT



SCALE: 1" = 4'



See Attached Revised min. 23' Egress