

HC-248H Tubular Jib Capacities - Open Throat Boom

Refer to notes on page 6.

Counterweights:
Upper cwt. "ABC": 63,440 lbs. (28 776 kg)
Bumper cwt. "A": 13,500 lbs. (6 124 kg)
Bumper cwt. "AB": 25,000 lbs. (11 340 kg)

Mounting - Link-Belt carrier:
8 x 4 drive, 282" (7.16 m) wheelbase 11' 0"
(3.35 m) wide.

Jib - tube: 32" (.81 m) wide,
24" (.61 m) deep.

Boom - tube: 80" (2.03 m) wide and
68" (1.73 m) deep with open throat top section.

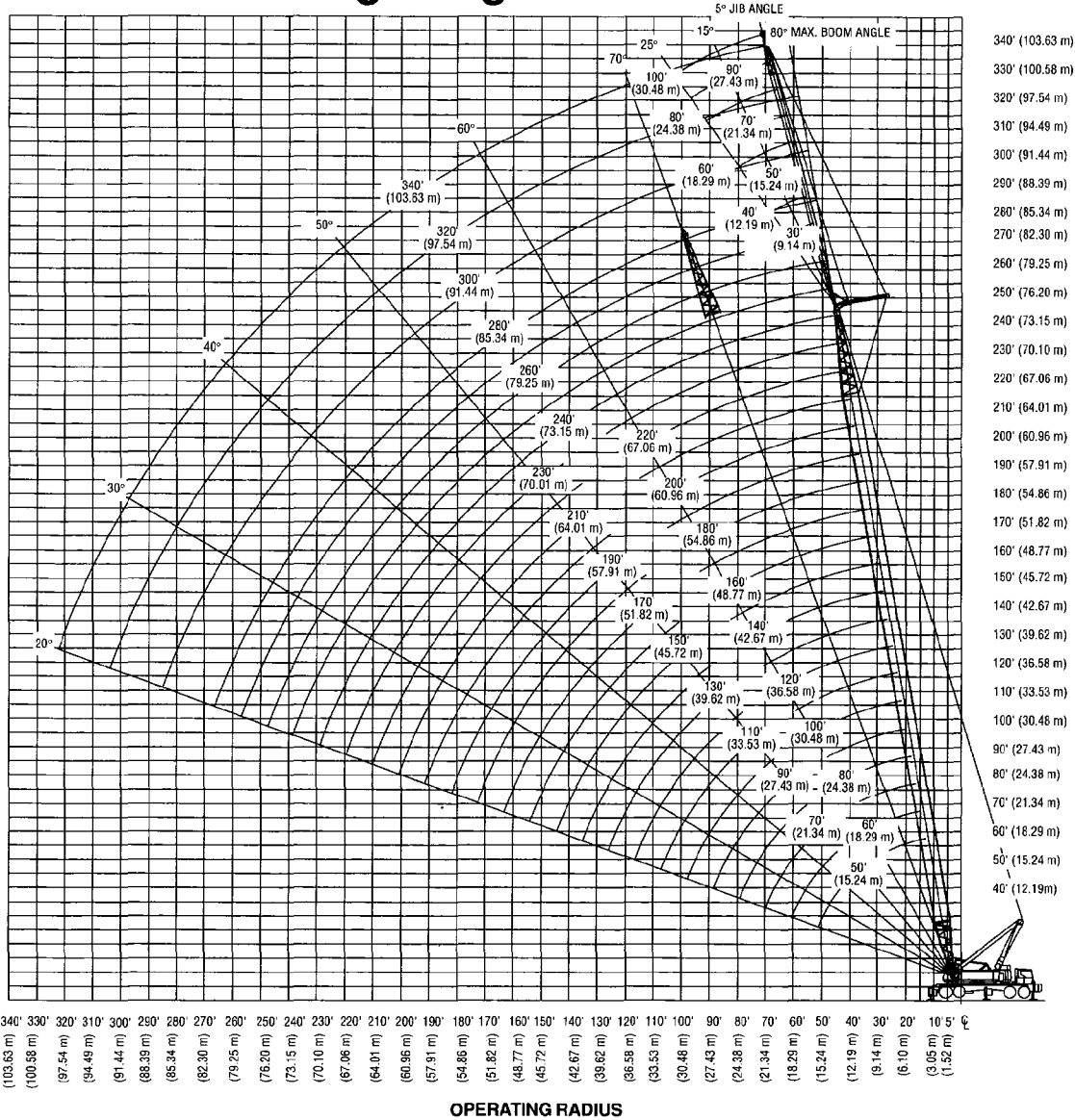
Boom Length	Lifting Capacities - Tubular Jib - Open Throat Boom																								
	30' jib			40' jib			50' jib			60' jib			70' jib			80' jib			90' jib			100' jib			
Jib Radius	5°	15°	25°	5°	15°	25°	5°	15°	25°	5°	15°	25°	5°	15°	25°	5°	15°	25°	5°	15°	25°	5°	15°	25°	
18	40,000*																								
19	40,000*																								
20	40,000*			36,000*																					
25	40,000*	40,000*		36,000*	36,000*		26,900*																		
30	40,000*	40,000*	40,000*	36,000*	36,000*	34,600*	26,700*																		
35	40,000*	40,000*	40,000*	36,000*	35,200*	34,600*	26,500*	26,000*																	
40	40,000*	40,000*	40,000*	35,500*	34,800*	32,300*	26,300*	25,400*																	
50	40,000*	40,000*	34,500*	34,500*	27,700*	27,700*	23,500*	23,300*	22,300*																
60	39,800*	35,700*	30,600*	34,200*	29,900*	24,400*	23,300*	23,000*	21,000*	19,300*	19,100*	18,200*	17,100*	17,400*	15,000*	14,600*	14,100*	13,500*	11,100*	10,400*	10,100*	10,300*	7,600*	7,300*	
70	33,900*	31,500*		29,200*	26,300*	22,600*	22,000*	22,000*	18,500*	17,200*	16,400*	13,500*	13,900*	13,500*	12,000*	12,000*	10,900*	10,300*	10,100*	9,800*	9,700*	7,600*	7,300*	7,000*	
80				25,500*	23,600*		22,800*	21,300*	19,300*	17,300*	15,000*	14,000*	12,600*	11,300*	11,300*	9,900*	9,700*	9,300*	8,800*	8,300*	8,000*	7,200*	7,000*	6,700*	
90							21,600*	19,300*	17,300*	15,200*	14,000*	12,300*	11,300*	11,900*	11,900*	9,900*	9,700*	9,300*	8,800*	8,300*	8,000*	7,200*	7,000*	6,400*	
100																									
110																									
120																									
130																									
140																									
25	40,000*			36,000*																					
30	40,000*	40,000*		36,000*	36,000*		26,900*																		
35	40,000*	40,000*	40,000*	36,000*	35,700*		26,700*																		
40	40,000*	40,000*	40,000*	36,000*	35,300*	34,600*	26,600*	26,000*																	
50	40,000*	40,000*	39,000*	35,600*	34,700*	31,000*	26,200*	25,000*	22,400*	20,800*	19,800*	17,600*	17,000*	16,200*	14,400*	14,400*	12,700*	12,700*	12,400*	12,400*	12,700*	9,800*	8,200*		
60	40,000*	40,000*	35,500*	34,900*	34,400*	27,700*	22,900*	22,900*	25,400*	24,100*	21,200*	19,000*	18,000*	16,500*	15,400*	14,400*	14,400*	12,700*	12,700*	11,700*	11,700*	8,800*	7,900*		
70	40,000*	39,000*	32,400*	34,500*	31,700*	25,200*	22,500*	22,500*	24,400*	22,600*	19,000*	18,200*	16,500*	15,700*	14,600*	13,900*	13,900*	12,000*	11,000*	11,000*	10,300*	8,400*	7,600*	7,400*	
80	35,100	35,100*	30,000*	33,100*	28,500*	23,200*	20,600*	23,600*	23,600*	21,900*	17,300*	16,800*	15,000*	14,900*	14,100*	13,200*	13,200*	12,000*	10,500*	10,400*	10,000*	8,000*	7,300*	7,200*	
90	29,800	30,000		29,400*	26,000*	22,500*	19,000*	22,500*	19,800*	18,800*	17,700*	16,800*	13,700*	14,200*	13,600*	12,000*	12,000*	10,500*	10,100*	9,800*	9,800*	7,700*	7,000*	6,900*	
100	25,700			26,100	24,000*		23,100*	21,300*	21,800*	18,100*	14,800*	17,000*	15,700*	13,800*	13,100*	11,100*	10,200*	9,900*	9,900*	9,900*	9,500*	7,400*	6,800*	6,700*	
110				22,800			22,500*	19,700*	19,700*	16,600*	13,900*	16,200*	14,400*	11,900*	12,600*	10,300*	9,900*	9,600*	9,600*	9,100*	9,100*	7,100*	6,500*	6,400*	
120							20,500		18,000*	15,500*		15,300*	13,400*	11,700*	11,800*	9,600*	9,300*	9,300*	8,500*	8,500*	6,800*	6,200*	6,100*		
130									16,600*		14,500*	12,500*		12,100*	11,000*	9,100*	9,300*	8,400*	8,400*	7,900*	7,900*	6,500*	5,800*	5,700*	
140											13,500*			11,600*	10,300*		9,000*	8,900*	8,900*	8,400*	7,500*	6,200*	5,200*	5,100*	
150														11,100*			8,400*	8,400*	7,800*	7,800*		5,800*	4,400*	4,400*	
160																	7,700*	7,700*				5,100*	4,400*		
170																						4,200*			

HC-248H Tubular Jib Capacities - Open Throat Boom

Refer to notes on page 6.

Boom Length	Jib Radius	Lifting Capacities - Tubular Jib - Open Throat Boom																									
		30' jib			40' jib			50' jib			60' jib			70' jib			80' jib			90' jib			100' jib				
		5°	15°	25°	5°	15°	25°	5°	15°	25°	5°	15°	25°	5°	15°	25°	5°	15°	25°	5°	15°	25°	5°	15°	25°		
50	40,000*	40,000*	40,000*	36,000*	35,900*		32,000*			26,900*			21,900*			17,400*			13,800*								
60	40,000*	40,000*	40,000*	36,000*	35,700*	34,600*	32,000*	31,600*		26,600*	25,600*	21,500*	21,300*	21,000*	20,100*	17,400*	16,300*	13,500*	13,200*	12,400*							
70	40,000*	40,000*	40,000*	36,000*	35,400*	33,200*	31,200*	29,400*	26,300*	24,700*	22,900*	20,700*	18,800*	18,300*	17,700*	15,900*	14,400*	12,800*	12,900*	12,000*	11,700*	10,400*	9,300*	8,300*	8,000*	7,400*	
80	34,500	35,100	35,800	34,800	34,700*	31,200*	30,700*	29,400*	28,300*	27,900*	24,300*	23,300*	20,900*	18,900*	18,400*	16,500*	15,000*	13,800*	13,200*	12,700*	11,300*	10,400*	9,400*	8,000*	8,000*	7,000*	
90	28,600	29,200	29,700	28,900	28,700	27,900*	27,900*	25,000*	24,600	24,800*	22,400*	22,400*	18,900*	18,900*	17,800*	16,800*	15,000*	13,600*	13,300*	12,300*	11,300*	10,400*	9,400*	8,000*	8,000*	7,000*	
100	24,100	24,600	25,000	24,400	24,800	24,800*	24,600	25,000*	24,600	24,800*	22,400*	22,400*	18,900*	18,900*	17,800*	16,800*	15,000*	13,600*	13,300*	12,300*	11,300*	10,400*	9,400*	8,000*	8,000*	7,000*	
110	20,900	21,300	21,700	21,200	21,800	21,800	21,400	21,600*	21,400	21,600*	19,900*	19,900*	16,600*	16,600*	15,900*	14,800*	13,000*	11,700*	11,000*	10,800*	9,500*	8,800*	7,900*	7,000*	7,000*	6,100*	
120	17,900	18,300	18,700	18,200	18,700	19,200	18,500	19,100	18,500	19,200	17,800*	17,800*	14,800*	14,800*	14,000*	12,500*	11,000*	10,000*	9,500*	8,500*	7,700*	7,000*	6,300*	5,500*	5,500*	4,300*	
130	15,500	15,800	16,100	15,800	16,200	16,600	16,000	16,600	16,000	16,600	15,900*	15,900*	13,000*	13,000*	12,500*	11,000*	10,000*	9,500*	8,500*	7,700*	7,000*	6,300*	5,500*	4,800*	4,800*	3,800*	
140	13,400	13,700	14,000	13,700	14,100	14,400	13,900	14,400	13,900	14,400	12,900*	12,900*	10,500*	10,500*	10,000*	8,500*	7,500*	7,000*	6,300*	5,500*	5,200*	4,600*	4,000*	3,500*	3,500*	2,500*	
150	11,600	11,900	12,100	11,900	12,300	12,600	12,100	12,600	12,100	12,600	11,500*	11,500*	9,400*	9,400*	9,000*	7,500*	6,500*	6,000*	5,200*	4,600*	4,300*	3,700*	3,200*	2,900*	2,900*	2,000*	
160	10,100	10,300	10,500	10,300	10,700	10,900	10,600	11,000	10,600	11,000	10,400*	10,400*	8,400*	8,400*	8,000*	6,500*	5,500*	5,000*	4,200*	3,600*	3,300*	2,700*	2,400*	2,000*	2,000*	1,500*	
170	8,800	9,000	9,100	9,000	9,300	9,500	9,200	9,600	9,200	9,600	9,400	9,400	7,600*	7,600*	7,200*	6,000*	5,000*	4,500*	3,700*	3,300*	2,700*	2,400*	2,000*	1,500*	1,500*	1,000*	
180	7,600	7,700	7,900	7,800	8,100	8,300	8,000	8,400	8,000	8,400	8,200	8,200	6,800*	6,800*	6,400*	5,200*	4,200*	3,700*	3,000*	2,600*	2,200*	1,800*	1,500*	1,000*	1,000*	500*	
190	6,500	6,700	6,800	6,800	7,000	7,200	7,000	7,300	7,000	7,300	7,100	7,100	5,800*	5,800*	5,400*	4,400*	3,600*	3,100*	2,500*	2,100*	1,700*	1,400*	1,000*	700*	700*	300*	
200	5,600	5,700	5,800	5,800	6,000	6,200	6,000	6,300	6,000	6,300	6,100	6,100	5,000*	5,000*	4,600*	3,800*	3,100*	2,600*	2,100*	1,700*	1,400*	1,000*	700*	500*	500*	200*	
210	4,700	4,900	5,000	5,000	5,100	5,200	5,200	5,400	5,200	5,400	5,200	4,400	4,400	4,400	4,400	3,600*	2,900*	2,400*	2,000*	1,600*	1,300*	900*	700*	500*	500*	200*	
220	4,000	4,200	4,400	4,200	4,400	4,400	4,400	4,600	4,400	4,600	4,400	3,700	3,700	3,700	3,700	3,000*	2,400*	2,000*	1,600*	1,300*	900*	700*	500*	300*	300*	100*	
230	3,300			2,900			3,100	3,900	3,700	3,900	3,900	3,100	3,100	3,100	3,100	2,500*	2,000*	1,600*	1,300*	900*	700*	500*	300*	200*	200*	100*	
240							2,500		2,500		2,700	2,700	2,200	2,200	2,200	1,800*	1,400*	1,100*	800*	600*	400*	300*	200*	100*	100*	50*	
250																											
260																											
270																											
280																											
290																											
300																											
310																											
320																											
330																											
340																											
350																											
360																											
370																											
380																											
390																											
400																											
410																											
420																											
430																											
440																											
450																											
460																											
470																											
480																											
490																											
500																											

HC-248H Working Range



Jib Capacity Notes:

- Capacities are shown in pounds and are the maximum allowable. Capacities are based on machine standing level on firm supporting surface under ideal job conditions. Capacities are not more than 85% of the tipping loads unless marked with an asterisk.
- Capacities are for 360° swing on five outrigger jacks.
- Capacities are limited to a Link-Belt 68" x 80" (1.73 x 2.03 m) open throat tubular boom, live mast and a Link-Belt 20-ton (18 t), 24" x 32" (.61 x .81 m) cross section jib with a 17' 10" (5.44 m) high jib strut properly assembled.
- Do not swing over side until all four outrigger beams are fully extended, all five jacks are extended, until all tires are clear of the ground and machine is properly leveled on a firm supporting surface.
- Two parts of 1" (25.4 mm) diameter type "N" or "RB" wire rope is required for maximum lift.
- Capacities are for 30' (9.14 m), 40' (12.19 m), 50' (15.24 m), 60' (18.29 m), 70' (21.34 m), 80' (24.38 m), 90' (27.43 m), and 100' (30.48 m) jib lengths only.
- A jib cannot be used on the open throat boom that is longer than 240' (73.15 m).
- The least stable condition is over the side.
- A deduction must be made from the jib capacities for weight of hook block, hook, sling, grapple, load weighing devices, etc.
- When using main hook, while jib is attached, reduce boom capacities by the following values:
 - 30' (9.14 m) jib - 2,600 lbs. (1 179 kg)
 - 40' (12.19 m) jib - 3,000 lbs. (1 361 kg)
 - 50' (15.24 m) jib - 3,400 lbs. (1 542 kg)
 - 60' (18.29 m) jib - 3,800 lbs. (1 724 kg)
 - 70' (21.34 m) jib - 4,200 lbs. (1 905 kg)
 - 80' (24.38 m) jib - 4,600 lbs. (2 087 kg)
 - 90' (27.43 m) jib - 5,000 lbs. (2 268 kg)
 - 100' (30.48 m) jib - 5,400 lbs. (2 449 kg)
- Refer to all notes on applicable lifting crane capacity chart in addition to these notes.
- Capacities apply only to the machine as originally manufactured and normally equipped by Link-Belt Construction Equipment Company.

Link-Belt Construction Equipment Company

A unit of Sumitomo Construction Machinery Co., Ltd.
We are constantly improving our products and therefore reserve the right to change designs and specifications.
© Link-Belt is a registered trademark. Copyright 1993. All rights reserved.