

# POWERS' PICKS \$15

Volume 6 Issue 16

October 31-November 5, 2018

© 2018 BP Sports, LLC

**Best Bets are on a 44-17-1 (72%) Run the Last 8+ Weeks!!!**  
**Week 10 CFB Best Bets Pg 3, Week 9 NFL Best Bets Pg 7**

## Week 9 News and Notes!

For those of you that are new, in this section we'll recap what happened last week specifically, the misleading finals, the key injuries, the bad beats and the line moves. We'll include most of these recaps here, therefore you don't have to waste time reading about them in my game-by-game write-ups for the upcoming week. Without further adieu, here's a run down of what happened last week in the world of CFB.

### Week 9 Trends Favorites-Dogs

Straight Up 33-23  
ATS 26-29-1

### Home-Away

Straight Up 32-24  
ATS 30-25-1

### Totals (O/U)

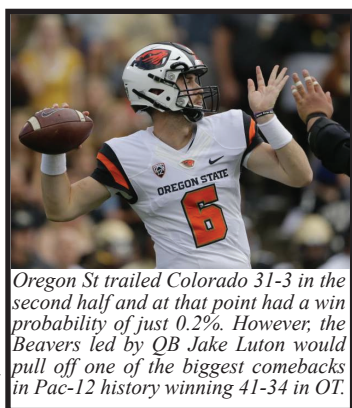
Over-Under 38-18

### Largest Favorites to Cover:

Fresno St (-24.5) vs Hawaii, 50-20  
Oklahoma (-24.5) vs Kansas St, 51-14  
Utah St (-19.5) vs New Mexico, 61-19  
Clemson (-17.5) at Florida St, 59-10

### Biggest Money line Upsets:

Oregon St +1700 won at Colorado, 41-34  
Kansas +400 won vs TCU, 27-26  
Cal +400 won vs Washington, 12-10  
Georgia Southern +340 won vs Appalachian St, 34-14



*Oregon St trailed Colorado 31-3 in the second half and at that point had a win probability of just 0.2%. However, the Beavers led by QB Jake Luton would pull off one of the biggest comebacks in Pac-12 history winning 41-34 in OT.*

### ATS Notables

Washington St is a perfect 8-0 ATS this year while UAB, Fresno St, Georgia Southern, Utah St and Virginia are all 7-1 ATS. On the other side, Florida Atlantic and Louisville are both 1-7 ATS.

Old Dominion has seen the OVER go 7-1 in their games this year. The OVER is 6-1 in Utah St, South Alabama and Wake Forest games. Meanwhile the UNDER is 8-0 in North Texas games and 7-1 in Washington, Tulsa and UAB games.

### Misleading Finals

Georgia Southern upset No. 25 Appalachian St 34-14 as 11-point underdogs. However, be careful upgrading the Eagles too much. The first downs were even and Georgia Southern only had a 334-288 yard edge. Appalachian St was -5 in TO's that led to 24 Georgia Southern points. Also App State quarterback Zac Thomas was knocked out of the game on the opening series for the Mountaineers. Georgia Southern is +19 in TO's this year!

Middle Tennessee crushed Old Dominion 51-17 but certainly didn't dominate the stats. Old Dominion had a 520-488 yard edge but had 5 TO's. Middle Tennessee got a 100-yard interception return TD (14-point swing) on the final play of the first half and a 37-yard interception return TD late in the 4Q.

Charlotte upset Southern Miss 20-17. However, Southern Miss had 24-13 first down and 426-224 yard edges but had 3 TO's. Southern Miss QB Jack Abraham threw 3 INT's including a 79-yard "Pick 6".

Kansas got their first win in October since 2009, snapping a 38-game losing streak in the month as they upset TCU 27-26 as 13.5-point underdogs. However, TCU had 27-17 first down and 504-307 yard edges but were -2 TO's. TCU was stopped on downs at the Kansas 1-yard line and also fumbled at the Kansas 7-yard line.

Nevada beat San Diego St 28-24. However, San Diego St had 24-14 first down and 456-297 yard edges including 173-62 on the ground. The Aztecs were -2 in TO's and led 14-0 early. San Diego St didn't score in the second half.

San Jose St picked up their first win of the season beating UNLV 50-37. However, the first downs were even at 25-25 and UNLV had a 554-506 yard edge but were -2 in TO's including a 50-yard "Pick 6". The Rebels were also stopped on downs twice in San Jose St territory.

Texas St beat New Mexico St 27-20. However, New Mexico St had 22-14 first down and 428-343 yard edges. New Mexico St missed a FG, threw and interception in the end zone and were stopped on downs at the 25-yard line.

### Major Injuries

Appalachian St QB Zac Thomas is ? for this week's game vs Coastal Carolina.

Ball St QB Riley Neal (knee) is out for this week's game vs Toledo.

Baylor QB Charlie Brewer (head) is ? for this week's game vs Oklahoma St.

UCF QB McKenzie Milton (ankle) is ? for this week's game vs Temple.

Central Michigan QB Tommy Lazzaro (hamstring) is out for the season.

Florida St QB Deondre Francois (head) is ? for this week's game vs NC State.

Georgia Tech QB TaQuon Marshall is ? for this week's game vs North Carolina.

Massachusetts QB Andrew Ford (ACL) is out for the season.

Oregon QB Justin Herbert is in concussion protocol and is ? for this week's game vs UCLA. The line has moved 5-points already.

USC QB JT Daniels (concussion) is ? for this week's game vs Oregon St.

Western Michigan QB Jon Wassink (ankle) is out indefinitely.

Wisconsin QB Alex Hornibrook (head) missed last week's game at Northwestern and is ? for this week's game vs Rutgers.

### Bad Beats

Those that bet the UNDER 54 in the FIU/WKU game had to feel pretty good when FIU led 31-9 with less than 5 minutes left in the game. However, WKU got a TD, then went for 2 and got it (critical). After recovering the onside kick, FIU was trying to run out the clock, but instead got a 58-yard TD run with a little over a minute left to give UNDER backers a 1-point frustrating loss.

There were a bunch of Bad Beats in the NFL this week. The Browns scored a 24-yard TD on 4th Down and 6 with :06 left to put the game over 47.5 against Pittsburgh. The Bengals blew a 34-16 cover in the fourth quarter vs Tampa Bay (won by 3, but were laying 3.5). Finally, L.A. Rams RB Todd Gurley broke free for what would have been a TD that gave game-day Rams and OVER backers a cover but he decided to fall down at the 4-yard line that allowed the Rams to run out the clock.

### Recapping Last Week's Best Bets

Last week we split out going 4-4. In the colleges, we went 2-3 and nearly every game went down to the wire. Texas A&M was outscored 14-0 in the fourth quarter at Mississippi St but Iowa St got a comeback win over Texas Tech. Stanford blew a 28-14 lead to Washington St while Iowa blew a 12-0 lead at Penn St only to comeback and nearly win outright. In the NFL we went 2-1 as our 3★ on Green Bay covered most of the game and those of you that bet GB +9.5 early in the week weren't sweating that late Todd Gurley drama. San Francisco blew a 15-3 second half lead but we did sneak in our totals' play on the UNDER in Denver/Kansas City by a point. Always remember gambling is a marathon, not a sprint.

## 2018 Nationwide Football Newsletter Contest (Regular Season Only)

We are happy to provide you with the records, standings and plays used from the Power Sweep (3★, 4★ & Underdog), Gold Sheet (Key Releases), Power Plays (4.5★), Sports Reporter (Best & Super Bets), Winning Points (Best Bets & Preferred), Playbook (3-5★'s), Pointwise (Ratings 1-4), Powers' Picks (1-4★'s) and new this year the Sunday Night Owl Report (1-4★'s).

College Newsletter	W	L	T	%	Net
Power Plays	18	9	0	66.67%	9
<b>Powers' Picks</b>	<b>27</b>	<b>18</b>	<b>0</b>	<b>60.00%</b>	<b>9</b>
Power Sweep	21	14	0	60.00%	7
Night Owl	28	19	1	59.57%	9
Sports Reporter	18	15	0	54.55%	3
Playbook	14	12	1	53.85%	2
Winning Points	25	27	2	48.08%	-2
Pointwise	21	28	4	42.86%	-7
Gold Sheet	14	21	0	40.00%	-7
<b>Combined</b>	<b>186</b>	<b>163</b>	<b>8</b>	<b>53.30%</b>	<b>23</b>

NFL Newsletter	W	L	T	%	Net
<b>Powers' Picks</b>	<b>17</b>	<b>6</b>	<b>1</b>	<b>73.91%</b>	<b>11</b>
Playbook	16	8	0	66.67%	8
Night Owl	7	4	0	63.64%	3
Power Sweep	8	7	1	53.33%	1
Sports Reporter	8	7	1	53.33%	1
Power Plays	4	4	0	50.00%	0
Winning Points	14	15	2	48.28%	-1
Gold Sheet	10	12	2	45.45%	-2
Pointwise	6	18	0	25.00%	-12
<b>Combined</b>	<b>90</b>	<b>81</b>	<b>7</b>	<b>52.63%</b>	<b>9</b>

College/NFL Combined Newsletter	W	L	T	%	Net
<b>Powers' Picks</b>	<b>44</b>	<b>24</b>	<b>1</b>	<b>64.71%</b>	<b>20</b>
Power Plays	22	13	0	62.86%	9
Night Owl	35	23	1	60.34%	12
Playbook	30	20	1	60.00%	10
Power Sweep	29	21	1	58.00%	8
Sports Reporter	26	22	1	54.17%	4
Winning Points	39	42	4	48.15%	-3
Gold Sheet	24	33	2	42.11%	-9
Pointwise	27	46	4	36.99%	-19
<b>Combined</b>	<b>276</b>	<b>244</b>	<b>15</b>	<b>53.08%</b>	<b>32</b>

# CFB/NFL Schedules Week 10 November 1-5

NFL/CFB Thursday, Nov 1st		Line	BP	All Times Eastern	
307 OAKLAND	8:20 p.m. FOX	46	45		
308 SAN FRANCISCO		-2.5	-3		
309 OHIO	7:00 p.m. ESPN	-2	-6		
310 WESTERN MICHIGAN		65	62		
311 NORTHERN ILLINOIS	7:00 p.m. CBS College	-6	-6		
312 AKRON		37	40		
313 TEMPLE	7:30 p.m. ESPN	61	59		
314 CENTRAL FLORIDA		-10.5	-11		
Friday, November 2nd		Line	BP	All Times Eastern	
315 PITTSBURGH	7:00 p.m. ESPN2	48.5	51		
316 VIRGINIA	7:30 p.m.	-7.5	-9		
317 WKU	8:00 p.m. CBS College	53	57		
318 MIDDLE TENNESSEE		-13.5	-15		
319 COLORADO	10:30 p.m. FOX Sports 1	57.5	61		
320 ARIZONA		-3	-5		
Saturday, November 3rd		Line	BP	All Times Eastern	
321 HOUSTON	7:00 p.m. ESPN	-13.5	-12		
322 SMU		71	72		
323 IOWA	3:30 p.m. ESPN2	51	-1		
324 PURDUE		-3	53		
325 TEXAS ST	2:00 p.m.	52	50		
326 GEORGIA ST		-6	-6		
327 SYRACUSE		-5	-6		
328 WAKE FOREST	12:00 p.m.	75	74		
329 GEORGIA	3:30 p.m. CBS	-9.5	-11		
330 KENTUCKY		43.5	43		
331 NAVY	3:30 p.m. ESPN	50	51		
332 CINCINNATI		-13.5	-11		
333 NEBRASKA	12:00 p.m. FOX	72.5	69		
334 OHIO ST		-17.5	-21		
335 GEORGIA TECH	12:15 p.m.	-6	-6		
336 NORTH CAROLINA		61.5	62		
337 MISSOURI	4:00 p.m. SEC Network	58	57		
338 FLORIDA		-6	-11		
339 DUKE	7:00 p.m. ESPN2	51	51		
340 MIAMI, FL		-9.5	-9		
341 FLORIDA ST	3:30 p.m. ABC	53.5	52		
342 NC STATE		-7.5	-10		
343 MEMPHIS	12:00 p.m. ESPN	-13	-16		
344 EAST CAROLINA		64.5	64		
345 BOSTON COLLEGE	3:45 p.m.	-2	-3		
346 VIRGINIA TECH		57	57		
347 MICHIGAN ST	12:00 p.m.	-2	-7		
348 MARYLAND		46.5	49		
349 OKLAHOMA	8:00 p.m. ABC	-13.5	-14		
350 TEXAS TECH		77	74		
351 WEST VIRGINIA	3:30 p.m. FOX	58	58		
352 TEXAS		-2	-3		
353 RUTGERS	12:00 p.m. Big Ten	50.5	54		
354 WISCONSIN		-28	-34		
355 NOTRE DAME	7:15 p.m. ESPN	-9.5	-4		
356 NORTHWESTERN		53.5	52		
357 MINNESOTA	3:30 p.m. Big Ten	-9.5	-7		
358 ILLINOIS		63	61		
359 CENTRAL MICHIGAN	12:00 p.m.	46.5	47		
360 EASTERN MICHIGAN		-13.5	-13		
361 AIR FORCE	12:00 p.m. CBS College	44	44		
362 ARMY		-7	-10		
363 TULANE	3:30 p.m. CBS College	59.5	57		
364 SOUTH FLORIDA		-7.5	-5		
365 APPALACHIAN ST	5:00 p.m.	-14.5	-14		
366 COASTAL CAROLINA		57.5	56		
367 BYU	10:15 p.m. ESPN2	55	53		
368 BOISE ST		-13	-13		
369 SAN DIEGO ST	10:15 p.m. ESPN	-10.5	-13		
370 NEW MEXICO		48	47		
371 SAN JOSE ST	2:00 p.m.	40	43		
372 WYOMING		-13.5	-11		
373 CALIFORNIA	10:45 p.m. ESPN	50.5	56		
374 WASHINGTON ST		-10.5	-10		

Saturday, November 3rd		Line	BP	All Times Eastern	
375 MARSHALL	3:00 p.m.	-3	-4		
376 SOUTHERN MISS		46.5	50		
377 GEORGIA SOUTHERN	3:00 p.m.	-7.5	-6		
378 UL-MONROE		57.5	62		
379 UTAH	4:00 p.m. Pac-12	-7	-4		
380 ARIZONA ST		56	54		
381 UCLA	7:30 p.m. FOX	57	58		
382 OREGON		-7.5	-10		
383 USC	10:00 p.m. FOX Sports 1	-16	-14		
384 OREGON ST		61	60		
385 STANFORD	9:00 p.m. Pac-12	46.5	49		
386 WASHINGTON		-10	-9		
387 IOWA ST	12:00 p.m.	-14.5	-14		
388 KANSAS		48	54		
389 TEXAS A&M	12:00 p.m. ESPN	48.5	49		
390 AUBURN		-4	-3		
391 CHARLOTTE	4:00 p.m.	47.5	52		
392 TENNESSEE		-21	-24		
393 LOUISIANA TECH	7:30 p.m. SEC Network	46.5	50		
394 MISSISSIPPI ST		-23	-16		
395 OKLAHOMA ST	12:00 p.m. FOX Sports 1	-8	-5		
396 BAYLOR		68	65		
397 LIBERTY	3:30 p.m.	71.5	71		
398 MASSACHUSETTS		-2.5	-3		
399 KANSAS ST	3:30 p.m. FOX Sports 1	46	48		
400 TCU		-8	-8		
401 CONNECTICUT	7:00 p.m. CBS College	58.5	60		
402 TULSA		-17.5	-14		
403 LOUISVILLE	12:00 p.m. ABC	59.5	61		
404 CLEMSON	3:45 p.m. ESPN	-38.5	-38		
405 PENN ST		52.5	51		
406 MICHIGAN		-10.5	-11		
407 SOUTH CAROLINA	12:00 p.m. SEC Network	67	67		
408 OLE MISS		PK	-1		
409 UTEP	3:30 p.m.	45.5	47		
410 RICE		-1	-1		
411 UL-LAFAYETTE	3:30 p.m.	63.5	63		
412 TROY		-10.5	-9		
413 SOUTH ALABAMA	3:00 p.m.	63.5	64		
414 ARKANSAS ST		-15.5	-16		
415 UTSA	7:30 p.m.	43.5	46		
416 UAB		-22	-20		
417 FLORIDA ATLANTIC	7:30 p.m.	59.5	59		
418 FIU		-3	-3		
419 ALABAMA	8:00 p.m. CBS	-14.5	-13		
420 LSU		54	53		
421 FRESNO ST	10:30 p.m. CBS College	-25	-24		
422 UNLV		58.5	58		
423 UTAH ST	11:59 p.m.	-19	-17		
424 HAWAII		70.5	71		
NFL Wk 9 Sunday, November 3rd		Line	BP	All Times Eastern	
451 DETROIT	1:00 p.m. FOX	49.5	47		
452 MINNESOTA		-4.5	-7		
453 KANSAS CITY	1:00 p.m. CBS	-9	-10		
454 CLEVELAND		51.5	50		
455 PITTSBURGH	1:00 p.m. CBS	47	-1		
456 BALTIMORE		-3	47		
457 TAMPA BAY	1:00 p.m. FOX	54.5	54		
458 CAROLINA		-6.5	-6		
459 N.Y. JETS	1:00 p.m. CBS	45	44		
460 MIAMI		-3	-4		
461 ATLANTA	1:00 p.m. FOX	46.5	50		
462 WASHINGTON		-1.5	-2		
463 CHICAGO	1:00 p.m. FOX	-10	-8		
464 BUFFALO		37	38		
465 HOUSTON	4:05 p.m. CBS	46	-1		
466 DENVER		-1	47		
467 L.A. CHARGERS	4:05 p.m. CBS	48	47		
468 SEATTLE		-1.5	-7		
469 L.A. RAMS	4:25 p.m. FOX	59.5	58		
470 NEW ORLEANS		-1.5	-2		
471 GREEN BAY	8:20 p.m. NBC	57	58		
472 NEW ENGLAND		-5.5	-4		
Monday, November 5th		Line	BP	All Times Eastern	
473 TENNESSEE	8:15 p.m. ESPN	41	42		
474 DALLAS		-6.5	-4		

**4★ = BEST**  
**3★ = BETTER**  
**2★ = GOOD**  
**1★ = FAIR**

**THE POWERS' PACK**

**3★ Louisiana Tech +23 over MISSISSIPPI ST**  
**3★ Michigan St -2.5 over MARYLAND**  
**2★ Ohio -2 over WESTERN MICHIGAN**  
**2★ FLORIDA -6 over Missouri**  
**2★ NORTHWESTERN +9.5 over Notre Dame**

**Games in Rotation Order** **HOME TEAM IN CAPS**

**Wednesday, October 31st**  
**TOLEDO 40 Ball St 23.** Ball St's blowout loss at Ohio last week was quite costly. The Cardinals were dominated as Ohio had 30-11 first down and 554-242 yard edges including 411-80 on the ground. But more importantly Ball St QB Riley Neal hurt his knee and is out for this game. Meanwhile, Toledo got some of their mojo back last week as they crushed Western Michigan 51-24. The Rockets had 25-17 first down and 515-432 yard edges including 268-125 on the ground. UT QB Eli Peters replaced injured starter Mitchell Guadagni and threw 3 second half TD passes. Backup QB on a short week would normally have us backing the Rockets here but this line is pretty steep. Pass.

**Thursday, November 1st**  
**2★ Ohio 34 WESTERN MICHIGAN 28.** We like Ohio here. Last week Ohio had its first 400-yard rushing game since 2005 as they dominated Ball St 49-14. The Bobcats had 30-11 FD and 554-242 yard edges including 411-80 on the ground. Meanwhile, Western Michigan was thumped by Toledo at home 51-24. Western Michigan QB Wassink left the game in the 1Q and is out for this week's game. Frosh Kaleb Eleby threw for 293 yards and 2 TD's but WMU had its six-game winning streak snapped. Sometimes it's easier for a backup to come in and have success early in a game but now the Bobcats have game film on him. Key matchup edge here for an Ohio ground attack that's averaging 234 rush ypg (5.6 ypc) against a Western Michigan rush defense that just got run over by Toledo for 268 yards (7.7 ypc).

STRAIGHT BET	
1 BET(S) @ \$550.00	
Nov 01 2018 COLLEGE FOOTBALL	
[309] OHIO U	
TICKET COST:	-1-110
TO WIN:	\$550.00
TO COLLECT:	\$500.00
dc5747	\$1,050.00
BA905	Oct 30 2018 19:37:21

**Northern Illinois 23 AKRON 17.** Last week the Huskies pulled a major surprise beating BYU 7-6 as TD underdogs. BYU did have 17-11 first down and 301-204 yard edges. Meanwhile, Akron beat Central Michigan 17-10. Akron only had a 303-300 yard edge but still won committing 4 TO's. The "37" total on this game is the lowest total in FBS college football since 2016. Note that Northern Illinois is on a 21-5 ATS run on the MAC road since 2012 but we can't back the Huskies here as they are traveling on a short week.

**CENTRAL FLORIDA 35 Temple 24.** Last year's game was really misleading as Temple had 5 TO's. Both teams come in off a bye. Temple upset Cincinnati in their last game as it was an even game as Temple had a 317-311 yard edge and both teams had 3 TO's. Cincy missed 3 FG's and Temple down 17-10 got a 20-yard TD pass with :49 left and then won in OT. On the other side, UCF QB Milton sat out the ECU game with a tweaked ankle (? here). It was a misleading game as ECU had 29-22 first down and 496-427 yard edges but were -5 in TO's. Temple is 25-12 ATS as a road dog the last 11 years. However, until Milton's status clears, we're passing.

**Friday, November 2nd**  
**VIRGINIA 30 Pittsburgh 21.** UVA continues to impress. Last week, they won and covered over North Carolina. UVA had 23-14 FD and 425-337 yard edges including 208-66 on the ground. UVA QB Bryce Perkins continues to be one of the biggest surprises in CFB. He threw for 3 TD's and added 112 rushing yards. On the other side, Pitt also surprised in upsetting Duke. Pitt had 29-27 FD and 634-619 yard edges and their 484 rushing yards were the second-most in program history. Duke was actually up 42-32 late 3Q. However, Pitt got a 48-yard FG with 2:33 left, a 25-yard TD pass with :05 left and then Duke had a safety on the final play. Those late score give slight value to the home team here.

**MIDDLE TENNESSEE 36 Western Kentucky 21.** WKU continues to be one of the biggest disappointments in CFB this year. The Hilltoppers lost by 3 TD's to FIU last week but WKU had a 23-17 first down edge. However, FIU was more efficient as they averaged 5.7 yards per play while WKU averaged 4.3. On the other side, Middle Tennessee crushed Old Dominion 51-17 but certainly didn't dominate the stats. Old Dominion had a 520-488 yard edge but had 5 TO's. Middle Tennessee got a 100-yard interception return TD (14-point swing) on the final play of the first half and a 37-yard interception return TD late in the 4Q. With that being said, MT still has more to play for here. Lean OVER.

**ARIZONA 33 Colorado 28.** Two teams possibly heading in opposite directions. Last week Arizona dominated Oregon with 27-18 first down and 465-270 yard edges. Arizona QB Khalil Tate back from injury was 19 of 33 for 189 yards and 3 TD's. Meanwhile, RB JJ Taylor had 212 rushing yards. On the other side, Colorado led Oregon St 31-3 in the second half and had a 99.8% chance to win the game according to ESPN's win probability. The Buffaloes would end up losing in OT and now head coach MacIntyre's seat just got a little warmer. Slight lean on the home team as re-member Tate burst on to the national scene in this game last year with 327 rush yards.

**Saturday, November 3rd**  
**Houston 42 SMU 30.** Houston comes in off a big win over South Florida. Houston had 35-29 first down and 682-467 yard edges. QB King was sensational going 28 of 40 for 419 yards and 5 TD's while adding 132 rushing yards and 2 TD's! All-American defensive tackle Ed Oliver missed the game with a bruised right knee. On the other side, SMU lost a heart-breaker to Cincinnati in OT. Cincy got a FG on the final play of regulation, then got a 86-yard interception return TD in OT for the win. Slight lean on the home team here.

**Follow Brad on Twitter: @BradPowers7**

**Iowa 27 PURDUE 26.** Last week Iowa was trailing 30-24 in the fourth quarter, and drove to first-and-goal at the 3 with 3:30 left but ended up throwing an INT. On the other side, Purdue clearly looked like they were having a hangover from the big Ohio St win as they lost to a banged up Michigan St team. Iowa is one of the best road teams in college football as they are 19-7-2 ATS on the highway the last 6 years. They run the football, protect the football and play great defense. We think more of the same is in order here.

**GEORGIA ST 28 Texas St 22.** Texas St is off a misleading win over New Mexico St last week. New Mexico St had 22-14 first down and 428-343 yard edges but missed a FG, threw an interception in the end zone and were stopped on downs at the 25-yard line. Texas St QB Willie Jones returned from injury and was 9 of 18 for 113 yards and 2 TD's while also adding 110 rushing yards. Meanwhile, Georgia St fell at home to Coastal Carolina by 3. Georgia St had 23-21 first down and 521-476 yard edges. Coastal Carolina led 17-0, then Georgia St took a 27-20 early 3Q lead. Coastal outscored Georgia St 10-0 in the 4Q. We're passing.

**Syracuse 40 WAKE FOREST 34.** Syracuse is ranked for the first time since 2001 as they are off a big win over NC State. Syracuse had a 30-21 first down and 561-541 yard edge. QB Dungey was 27 of 38 for 411 yards and 3 TD's. Meanwhile, Wake is also off a big win as they had a 591-532 yard edge including 368-174 on the ground vs Louisville. RB Colburn had 243 rushing yards and 3 TD's. Last year's game saw Wake win 64-43. This year the Orange get some revenge.

**Georgia 27 KENTUCKY 16.** Winner takes home SEC East Title and this is arguably the biggest home game in Kentucky football history. Last week, Georgia had 20-16 first down and 429-275 yard edges in their win over Florida. It should be noted though that UGA was +3 TO's and Georgia scored all four touchdowns on third down. On the other side, advanced analytics sites have Kentucky as the luckiest team in country so far this season. Last week UK got a 67-yard punt return TD with 5:18 left and then scored a 2-yard TD on the final play of the game to win. UK did have 21-13 first down and 385-249 yard edges. Tough laying more than a TD vs UK's No. 1 scoring D in the country but we do lean with UGA here.

**CINCINNATI 31 Navy 20.** Navy is most likely heading for their worst season since 2002. The Mids have now lost 5 straight after losing 44-22 to Notre Dame last week. ND did have 28-14 first down and 584-344 yard edges and ND led 27-0 at halftime but had a sloppy second half defensively. On the other side, Cincinnati has had back-to-back OT games. Last week, Cincinnati controlled SMU much more than the final indicated. The Bearcats had 25-13 first down and 477-351 yard edges but had 3 TO's. Cincy did get a FG on the final play of regulation then got a 86-yard interception return TD in OT for the win. The Cincinnati defense is allowing just 101 rush ypg (3.4) but we have a lean with Navy here.

**OHIO ST 45 Nebraska 24.** Note that Urban Meyer with extra time to prepare (season openers, bowl games and off regular season byes) in his career is 37-13-1 ATS (74%). The Buckeyes needed one after Purdue destroyed them 49-20 two weeks ago. The Buckeye run game has been non-existent and the defense continues to allow the big play. On the other side, Nebraska has won two straight. Last week the Huskers had a breather as they had 23-16 first down and 468-355 yard edges in a blowout win over Bethune-Cookman. The Huskers led 38-3 at halftime and were conservative in the second half. Do note that last year after losing 55-24 to Iowa, the Buckeyes responded by beating Michigan St 48-3. We lean with OSU.

**Georgia Tech 34 NORTH CAROLINA 28.** Last week, Georgia Tech had 35-16 first down and 465-323 yard edges and held the ball for 42:18 in their road win over Virginia Tech. The Yellow Jackets ran for 465 yards and attempted only 1 pass! GT QB Tobias Oliver in his first career start ran for 215 yards. Meanwhile, North Carolina is just 1-6 and despite the team playing hard, this could be the last season for head coach Larry Fedora. Last week their opponent, UVA had 23-14 FD and 425-337 yard edges including 208-66 on the ground. Georgia Tech is on a 1-8 SU/ATS run as a road favorite and that prevents us from getting involved here.

**3★ FLORIDA 34 Missouri 23.** A couple of reasons we like the Gators here. First we're catching some value off not one but two misleading finals last week. Florida did lose to Georgia 36-17 but UGA was +3 TO's and scored all four of their touchdowns on third down. Meanwhile, many Missouri fans are ticked about the ? pass interference penalty that gave Kentucky one more chance in the final play loss. The reality is Kentucky controlled the second half (Missouri didn't have a single first down) and UK had 21-13 first down and 385-249 yard edges. Missouri QB Drew Lock only had 165 passing yards and note that Lock is 0-9 against Top 25 teams in his four years as a starting quarterback. Make it 0-10!

STRAIGHT BET	
1 BET(S) @ \$550.00	
Nov 03 2018 COLLEGE FOOTBALL	
[338] FLORIDA	
TICKET COST:	-6-110
TO WIN:	\$550.00
TO COLLECT:	\$500.00
dc5747	\$1,050.00
BA905	Oct 30 2018 19:37:32

**MIAMI, FL 30 Duke 21.** We don't like what we've seen from either team in recent weeks. Last week QB Rosier got the start for Miami and was just 19 of 36 for 150 yards and had 2 INT's in the Hurricanes loss at Boston College. That drops Miami to just 5-6 SU and 3-8 ATS in their last 11 games. Duke was actually up 42-32 on Pitt late 3Q. Pitt got a 48-yard FG with 2:33 left, a 25-yard TD pass with :05 left and then Duke had a safety on the final play. Duke QB Daniel Jones was 27 of 42 for 396 yards and 4 TD passes but the defense allowed 484 rushing yards. We're passing.

**NC STATE 31 Florida St 21.** Both teams come in off losses last week. FSU couldn't get out of its own way, suffering its most-lopsided defeat ever at home losing 59-10 to Clemson. FSU head coach Willie Taggart after the game said, "I felt like we had some guys that quit on our football team and that can't be tolerated. You quit, you don't play." Meanwhile, NC State dropped their second straight road game losing 51-41 to Syracuse. Do note that this is the first time the Wolf Pack have ever been favored over the Seminoles. In the previous 26 meetings, NC State was a 17-point underdog on average! NC State is 13-3-1 ATS in their last 17 meetings vs Florida St and they get another win and cover here. Sunday Night Owl customers did get the Wolf Pack -6.5 and this line has crossed right through a key "7" number.

**Memphis 40 EAST CAROLINA 24.** Both teams come in off byes. Prior to it, Memphis was crushed at Missouri. RB Darrell Henderson (nation's leading rusher) got hurt early in the game and didn't return but he is probable here. Meanwhile, ECU had a misleading loss to UCF. ECU had 29-22 first down and 496-427 yard edges but were -5 in TO's. The key play was a 94-yard fumble return TD for UCF off a jump pass. We like the value here with the Tigers off back-to-back losses.

**Boston College 30 VIRGINIA TECH 27.** The Eagles come in off a big win over Miami last week. BC had a 433-305 yard edge and got a boost from the return RB AJ Dillon who ran for 149 yards. Dillon should be licking his chops here vs a Virginia Tech defense that got run over by Georgia Tech's option last week. The Yellow Jackets ran for 465 yards as VT gave up its most rushing yards since SMU got 500 in 1973. We lean with BC here.

**3★ Michigan St 28 MARYLAND 21.** The big story here is that Maryland head coach DJ Durkin has been surprisingly re-instated and we actually think that is a negative here with all the distractions. According to an ESPN source after the announcement the reaction was, "Everybody's shell-shocked. Nobody's saying much. Nobody knows what to do." Do note that sources also told ESPN that several players walked out of the meeting. Last week on the field Maryland crushed Illinois 63-33. Maryland had a 712-493 yard edge as RB Leake finished with 140 yards rushing, including scores of 64, 27 and 43 yards and had a 97-yard kick return TD. On the other side, MSU had 26-16 first down and 426-339 yard edges in a 10-point win over Purdue. MSU QB Rocky Lombardi looked like an upgrade over injured Lewerke as Lombardi was 26 of 46 for 318 yards and 2 TD's. Maryland is a one-dimensional offense that averages 246 on the ground and only 131 through the air. Now they face a Michigan St defense that is allowing just 77 rush ypg.

**Oklahoma 44 TEXAS TECH 30.** Last week OU got a blowout win over Kansas St. The Sooners had 32-13 first down and 702-245 yard edges. Meanwhile the Oklahoma defense continues to show improvement. Last week, they held Kansas St to 245 yards, a season low for an opponent. That's coming a week after holding TCU to 275 yards! OU is playing with more energy...and new DC Ruffin McNeill is known as a players' coach. Plus the coaching staff looks like it has better chemistry. On the other side, we cashed on these pages fading Texas Tech in their loss to Iowa St. The early money has come in hot and heavy on the Sooners here and there has been clear value lost. Totals players note that the last 7 meetings in the series have all went OVER the total. This week, the total is 77, highest on the board.

**TEXAS 31 West Virginia 28.** The winner stays in the mix for the Big 12 Title game. Last week Texas' playoff hopes most likely came to an end. Texas QB Ehlinger was rusty in the first half coming off injury (5 of 15) and Texas was down 31-14. However both Texas and Ehlinger rallied in the second half before coming up short. Meanwhile, West Virginia dominated Baylor 58-14 last Thursday. West Virginia had a 568-287 yard edge and led 41-0 at halftime and it could've been worse. Do note that Texas head coach Tom Herman is just 4-15 ATS as a favorite but usually West Virginia also struggles in these spots. We're not getting too involved here.

**WISCONSIN 44 Rutgers 10.** Last week Wisconsin QB Hornibrook was a late scratch and his replacement Jack Coan was 20 of 31 for 158 yards and a 1 TD in the loss at Northwestern that hurt the Badgers chances of getting back to the Big Ten title game. Meanwhile, Rutgers led that same Northwestern team two weeks ago 15-7 in the middle of the 3Q before coming up short. The Scarlet Knights are coming off a bye but this is usually one of those games they get run over. We can't recommend a play until Hornibrook's status clears. We do lean OVER.

**2★ Northwestern (plus the points) Notre Dame 28 NORTHWESTERN 24.** We like the dog here. Notre Dame has really struggled in November under Brian Kelly as they are 3-14 ATS the last 4 years. In 3 of those 4 years, ND entered November in the Top 5. You then start paying a big premium on the Irish and they have ZERO Top 10 finishes in those 4 years. After Northwestern's upset over Wisconsin last week, the underdog in Northwestern games is now on a 9-0 ATS run! Northwestern gets up for these big games and the last two meetings vs ND, they pulled outright upsets as 28-point and 17-point underdogs. Also note that Notre Dame after playing Navy is just 3-11 ATS. Navy is really physical and you're in a dog-fight for all 60 minutes. Finally, it's tough getting margin on a Northwestern defense allowing just 24 ypg.

**Minnesota 34 ILLINOIS 27.** Last week, Minnesota won a wild one over Indiana. Minnesota led 31-9 in the 4Q but saw Indiana score 22 straight only to have the Gophers win it on a 67-yard TD pass. Minnesota QB Morgan was 17 of 24 for 302 yards and 3 TD's in his first start and RB Brooks, back from injury and suspension had 154 yards. Meanwhile, Illinois is off a blowout loss to Maryland as the Illini defense allowed 712 yards. This is the Gophers' largest away favorite role in Big Ten play since 2005. We're leaning with the home dog.

**EASTERN MICHIGAN 30 Central Michigan 17.** Last week Eastern Michigan lost at home to Army. The Black Knights dominated with 27-10 first down and 415-235 yard edges including 289-34 on the ground. At 4-5, their schedule does ease up now as they have a chance of making just their 2nd bowl game in the last 30 years. Meanwhile, there will be no bowl for Central Michigan. Last week they fell to Akron 17-10. CMU QB Lazzaro is out for the year and Tony Poljan was 19 of 37 for 169 yards. This is still an important rivalry game. Pass.

**ARMY 27 Air Force 17.** Last week Army dominated Eastern Michigan. Army had 27-10 first down and 415-235 yard edges including 289-34 on the ground and had the ball for 45:42. QB Hopkins returned from injury and was 7 of 8 for 126 yards and 2 TD's while adding 105 rushing yards. Army is incredibly 26 of 29 (89.7%) on 4th down this season. On the other side, Air Force lost by 10 at home to Boise St last week. Boise had 26-23 first down and 530-443 yard edges. The key play happened when Boise trailed 28-21 late in the first half. The Broncos got a 4&10 35-yard TD pass with :05 left. We like Army to take another step in keeping the Commander-In-Chief Trophy.

**SOUTH FLORIDA 31 Tulane 26.** Last week Tulane trailed 17-7 in the second half but scored 17 unanswered to get the win over Tulsa. Tulane had a 404-315 yard edge including 312-135 on the ground. Meanwhile, USF was finally exposed in a 3-TD loss at Houston last week giving the Bulls their first loss of the season. We lean with the Green Wave here.

**Appalachian St 35 COASTAL CAROLINA 21.** Last week No. 25 Appalachian St was upset by Georgia Southern 34-14 as a 11-point favorite. However, the first downs were even and Georgia Southern only had a 334-288 yard edge. Appalachian St was -5 in TO's that led to 24 Georgia Southern points. Also App State quarterback Zac Thomas was knocked out of the game on the opening series for the Mountaineers and is questionable here. Meanwhile Coastal Carolina is thinking possible bowl bid after beating Georgia St last week. Coastal Carolina led 17-0, then Georgia St took a 27-20 early 3Q lead. However, Coastal outscored Georgia St 10-0 in the 4Q. We're passing until QB Thomas situation clears.

**BOISE ST 33 Byu 20.** Last week Boise won by 10 at Air Force. The Broncos had 26-23 first down and 530-443 yard edges. The key play happened when Boise trailed 28-21 late in the first half when they got a 4&10 35-yard TD pass with :05 left. Boise QB Rypien threw for 399 yards and 5 TD passes. Meanwhile, BYU suffered a surprising 7-6 loss at home to Northern Illinois. BYU had 17-11 first down and 301-204 yard edges and BYU QB Wilson was 18 of 30 for 208 yards. Pass.

**San Diego St 30 NEW MEXICO 17.** San Diego St head coach Rocky Long has won 6 straight vs his former team. Last week San Diego St had 24-14 first down and 456-297 yard edges including 173-62 on the ground but lost at Nevada 28-24. The Aztecs were -2 in TO's and led 14-0 early. San Diego St didn't score in the second half. Meanwhile, New Mexico was crushed at Utah St. New Mexico had 5 TO's and Utah St led 52-5 at halftime! We lean with San Diego St here.

**WYOMING 27 San Jose St 16.** Last year San Jose St won outright over Wyoming as a 18.5-point underdog but the Cowboys were playing without QB Josh Allen. Last week, the Spartans got their first win of the season as they beat UNLV 50-37. However, the first downs were even at 25-25 and UNLV had a 554-506 yard edge but were -2 in TO's including a 50-yard "Pick 6". The Rebels were also stopped on downs twice in San Jose St territory. Meanwhile, Wyoming did have a 291-20 rushing yard edge but benefited from +3 TO's in their win at Colorado St last Friday. Wyoming went with Sean Chambers at QB. He was 7 of 10 for 116 yards and 2 TD's while also adding 101 rushing yards. Lean on San Jose St and the OVER here.

**WASHINGTON ST 33 California 23.** Last week we lost on these pages fading Washington St. We looked good early as the Cougars trailed Stanford 28-14. However, Washington St QB Gardner Minshew was 40 of 50 (including 19 straight completions in the second half) for 438 yards and 3 TD's. Meanwhile Cal is off a big upset win over Washington last week. Cal had a 14-13 FD edge but Washington had a 250-242 yard edge. Cal was +2 in TO's including a 37-yard interception return TD. Washington St has revenge for a 37-3 loss to Cal last year as the Cougars had 7 TO's in that game. Also note that Washington St is a perfect 8-0 ATS vs the closing line this year. We lean with the OVER.

**Marshall 27 SOUTHERN MISS 23.** Marshall comes in fresh off a bye after beating FAU 31-7. The Herd could get back QB Green here. Meanwhile, Southern Miss was upset by Charlotte. However, Southern Miss had 24-13 first down and 426-224 yard edges but had 3 TO's. Southern Miss QB Jack Abraham threw 3 INT's including a 79-yard "Pick 6". Slight lean on the OVER here.

**Georgia Southern 34 UL-MONROE 28.** We think this is a really good spot for ULM. The War Hawks are fresh off a bye while Georgia Southern upset No. 25 Appalachian St 34-14 as 11-point underdogs. However, be careful upgrading the Eagles too much. The first downs were even and Georgia Southern only had a 334-288 yard edge. Appalachian St was -5 in TO's that led to 24 Georgia Southern points. Also App State quarterback Zac Thomas was knocked out of the game on the opening series for the Mountaineers. Georgia Southern is +19 in TO's this year! That makes them OVERRATED. We lean with ULM but prefer the OVER.

**Utah 30 ARIZONA ST 26.** Both teams come in off big wins. The Utes are rolling to their first Pac-12 South Title as they crushed UCLA 41-10. Utah had 26-17 first down and 470-291 yard edges and RB Zack Moss had 211 rushing yards and 3 TD's. Meanwhile, Arizona St upset USC as we cashed a VIP play. Arizona St had 20-19 first down and 449-420 yard edges. Arizona St RB Eno Benjamin had 185 rushing yards and 2 TD's and WR Harry had a 92-yard punt return TD. Keep in mind, in each of Arizona St's 4 losses this year, they've lost by exactly 7 points. Lean ASU.

**OREGON 34 UCLA 24.** Two major stories here. First, it's the return of Chip Kelly to Oregon where he was 46-7 from 2009-2012. Second, it's the health status of Oregon QB Justin Herbert who is ? here after being put in concussion protocol. The line has already moved 5.5-points signaling he may be more doubtful than anything. The Ducks are reeling off back-to-back losses and last week were crushed at Arizona. Meanwhile, UCLA was thumped at home by Utah. The Utes had 26-17 first down and 470-291 yard edges. UCLA QB Speight was just 20 of 40 for 164 yards and 2 INT's. We're passing until Herbert's status clears.

**USC 37 OREGON ST 23.** The heat is on USC head coach Clay Helton. After last week's loss to Arizona St, USC is on a 6-17 ATS in their last 23 games. Helton fired his offensive line coach and took over play-calling duties this week. Do note that USC was playing with a 3rd-string QB in Jack Sears who was 20 of 28 for 235 yards and 2 TD's in his first career start. J.T. Daniels should return here. Meanwhile, Oregon St got a remarkable come-from-behind win over Colorado last week. The Beavers trailed 31-3 in the second half and at that point had a 0.8% chance of winning according to ESPN's win probability. The win snapped the Beavers' 22-game road losing streak and 13-game conference losing streak, both of which were the longest streaks in the nation. We prefer the energy around the Oregon St program.

**WASHINGTON 29 Stanford 20.** Two of the most disappointing teams in college football square off here. Last week Washington starting QB Jake Browning was benched late in the third. Redshirt freshman Jake Haener replaced Browning but threw the all-important "Pick 6" in the loss to Cal. Meanwhile, Stanford blew a 28-14 lead to Washington St as we dropped a play on these pages. Not sure what the motivation is here for either team other than pride. Pass.

**IOWA ST 34 Kansas 20.** Last week we cashed on Iowa St on these pages in their 40-31 win over Texas Tech. It wasn't easy as Iowa St got a 48-yard TD reception with 2:25 left to get the cover. Meanwhile, Kansas got their first win in October since 2009 as they upset TCU 27-26 as 13.5-point underdogs. However, TCU had 27-17 first down and 504-307 yard edges but were -2 TO's. TCU was stopped on downs at the Kansas 1-yard line and also fumbled at the Kansas 7-yard line. Since 1980, the Cyclones are just 2-8 ATS laying doubles on the road. Lean OVER.



# Week 10 Computer Projected Lines for Every CFB Game

For the past couple of seasons we have posted computer projected lines at pregame.com. Games where there was of difference of more than 3 points saw our computer lines actually beat the Vegas line at a 155-129-7 (55%) clip the last two years. That's pretty solid and actually better than our own handicapping (much to our dismay). So far this year's plays are 42-37-1. Keep in mind, these computer lines don't take into consideration off-the-field factors like revenge or flat spots. They are basically a power-rating number difference between the two teams that also takes into consideration the home field advantage.

Of the 5 games where our computer is off more than 3 points compared to the Vegas line (highlighted), our favorite team this week to back would be **Memphis -13**.

The Comp column is the computer projected line and the Diff column is the difference between the Vegas line and the Computer line. "+" numbers in the difference column say back the underdog. "-" numbers in the difference column say back the favorite. Let us know if you have questions.

Wednesday, October 31st Line	Comp	Diff	Saturday, November 4th Line	Comp	Diff		
305 Ball State			365 Appalachian St				
306 Toledo	-18.5	-15.8	+2.7	366 Coastal Carolina	+14.5	+15.8	-1.3
<b>Thursday, November 1st Line</b>	<b>Comp</b>	<b>Diff</b>	367 BYU				
309 Ohio			368 Boise State	-13	-13.3	-0.3	
310 Western Michigan	+2	+0.6	+1.4	369 San Diego State			
311 Northern Illinois			370 New Mexico	+10.5	+11.6	-1.1	
312 Akron	+6	+7.8	-1.8	371 San Jose State			
313 Temple			372 Wyoming	-14	-14.6	-0.6	
314 Central Florida	-10.5	-11.9	-1.4	373 California			
<b>Friday, November 2nd Line</b>	<b>Comp</b>	<b>Diff</b>	374 Washington State	-10.5	-11.9	-1.4	
315 Pittsburgh			375 Marshall				
316 Virginia	-7.5	-7.3	+0.2	376 Southern Miss	+3	+4.3	-1.3
317 Western Kentucky			377 Georgia Southern				
318 Middle Tennessee	-13.5	-15.9	-2.4	378 UL - Monroe	+7.5	+6.0	+1.5
319 Colorado			379 Utah				
320 Arizona	-3	-2.6	+0.4	380 Arizona State	+7	+4.9	+2.1
<b>Saturday, November 4th Line</b>	<b>Comp</b>	<b>Diff</b>	381 UCLA				
321 Houston			382 Oregon	-7.5	-11.5	-4.0	
322 SMU	+13.5	+11.1	+2.4	383 USC			
323 Iowa			384 Oregon State	+16	+13.8	+2.2	
324 Purdue	-3	-0.3	+2.7	385 Stanford			
325 Texas State			386 Washington	-10	-8.8	+1.2	
326 Georgia State	-6	-6.3	-0.3	387 Iowa State			
327 Syracuse			388 Kansas	+14.5	+15.1	-0.6	
328 Wake Forest	+5	+2.6	+2.4	389 Texas A&M			
329 Georgia			390 Auburn	-4	-3.0	+1.0	
330 Kentucky	+9.5	+9.9	-0.4	391 Charlotte			
331 Navy			392 Tennessee	-21	-22.7	-1.7	
332 Cincinnati	-13.5	-12.2	+1.3	393 Louisiana Tech			
333 Nebraska			394 Mississippi State	-23	-20.6	+2.4	
334 Ohio State	-17.5	-22.1	-4.6	395 Oklahoma State			
335 Georgia Tech			396 Baylor	+8	+5.6	+2.4	
336 North Carolina	+6	+6.9	-0.9	397 Liberty			
337 Missouri			398 Massachusetts	-2.5	-2.7	-0.2	
338 Florida	-6	-7.1	-1.1	399 Kansas State			
339 Duke			400 TCU	-8	-9.1	-1.1	
340 Miami Florida	-9.5	-8.5	+1.0	401 Connecticut			
341 Florida State			402 Tulsa	-17.5	-18.6	-1.1	
342 NC State	-7.5	-6.6	+0.9	403 Louisville			
343 Memphis			404 Clemson	-38.5	-38.1	+0.4	
344 East Carolina	+13	+16.7	-3.7	405 Penn State			
345 Boston College			406 Michigan	-10.5	-12.2	-1.7	
346 Virginia Tech	+2	-0.2	+2.2	407 South Carolina			
347 Michigan State			408 Mississippi	PK	+0.4	+0.4	
348 Maryland	+2	+1.0	+1.0	409 UTEP			
349 Oklahoma			410 Rice	-1	-0.7	+0.3	
350 Texas Tech	+13.5	+8.8	+4.7	411 UL - Lafayette			
351 West Virginia			412 Troy	-10.5	-8.5	+2.0	
352 Texas	-2	-3.0	-1.0	413 South Alabama			
353 Rutgers			414 Arkansas State	-16	-18.2	-2.2	
354 Wisconsin	-28	-30.4	-2.4	415 UTSA			
355 Notre Dame			416 UAB	-22	-17.5	+4.5	
356 Northwestern	+9.5	+9.4	+0.1	417 Florida Atlantic			
357 Minnesota			418 FIU	-3	-0.4	+2.6	
358 Illinois	+9.5	+8.6	+0.9	419 Alabama			
359 Central Michigan			420 LSU	+14.5	+12.1	+2.4	
360 Eastern Michigan	-13.5	-12.9	+0.6	421 Fresno State			
361 Air Force			422 UNLV	+25	+23.2	+1.8	
362 Army	-7	-6.6	+0.4	423 Utah State			
363 Tulane			424 Hawaii	+19	+16.6	+2.4	
364 South Florida	-7.5	-7.2	+0.3				

# Top 20 CFB ATS Trends for Week 10

1. This week's 37 total between Northern Illinois and Akron is the lowest total in FBS college football since 2016.
2. Northern Illinois is on a 21-5 ATS run on the MAC road since 2012. This week the Huskies are 6.5-point favorites at Akron.
3. Temple is 25-12 ATS as a road dog the last 11 years. This week the Owls are 10.5-point underdogs at Central Florida.
4. Georgia Tech is on a 1-8 SU/ATS run as a road favorite. This week the Yellow Jackets are 6-point favorites at North Carolina.
5. NC State is a 7.5-point home favorite over Florida St this week. This is the first time the Wolf Pack have ever been favored over the Seminoles. In the previous 26 meetings, NC State was a 17-point underdog on average!
6. NC State is 13-3-1 ATS in their last 17 meetings vs Florida St.
7. Texas head coach Tom Herman is now 4-15 ATS his last 19 games as a favorite. This week the Longhorns are 2-point favorites hosting West Virginia.
8. The underdog is a perfect 9-0 ATS in Northwestern's last 9 games. This week the Wildcats are 9.5-point underdogs hosting Notre Dame.
9. Minnesota is a 9.5-point favorite at Illinois this week. That's the Gophers' largest away favorite role in Big Ten play since 2005.
10. Washington St is a perfect 8-0 ATS vs the closing line this year. This week the Cougars are 10.5-point favorites hosting Cal.
11. USC is on a 6-17 ATS run in their last 23 games. This week the Trojans are 16-point favorites at Oregon St.
12. Iowa St is a 14.5-point road favorite at Kansas this week. Since 1980, the Cyclones are just 2-8 ATS laying doubles on the road.
13. The visitor is a perfect 6-0 SU/ATS in the Texas A&M/Auburn series. This week Texas A&M is a 4-point underdog at Auburn.
14. Louisiana Tech is on a 21-7 ATS run as a road underdog. This week the Bulldogs are 23-point dogs at Mississippi St.
15. Louisville is a 38.5-point underdog at Clemson this week. That's the largest underdog role for the Cardinals since 1987 when they were 47-point underdogs to Florida St.
16. Louisville is 7-1 ATS all-time as a 28-point or more underdog.
17. UAB is on a 10-0 SU/9-0-1 ATS run at home. This week the Blazers are 22-point home favorites over UTSA.
18. No. 4 LSU is a 14.5-point home underdog to No. 1 Alabama this week. That's the largest home underdog role for any Top 4 team ever.
19. If you blindly bet on Alabama in the first half this season and then take the Crimson Tide in the second half. You'd be 15-1 ATS this year.
20. Fresno St is 17-3-2 ATS under head coach Jeff Tedford. This week the Bulldogs are 25-point road favorites at UNLV.

4★ = BEST  
3★ = BETTER  
2★ = GOOD  
1★ = FAIR

## THE POWERS' PACK

**3★ SEATTLE -1.5 over L.A. Chargers**  
**2★ MINNESOTA -4.5 over Detroit**  
**2★ Pittsburgh +3 over BALTIMORE**

**Games in Rotation Order**  
**Thursday, November 1st**

**HOME TEAM IN CAPS**

**SAN FRANCISCO 24 Oakland 21.** Battle of the Bay Area featuring two disappointing teams. It's also two teams that played poorly in the second half last week. We lost with San Francisco on these pages last week as the 49ers blew a 15-3 lead in Arizona. They have now turned it over 16 times since their last takeaway. Meanwhile Oakland led Indianapolis 28-21 only to allow the game's final 3 TD's. With San Fran QB Garoppolo hurt, Oakland RB Lynch hurt and Oakland WR Cooper shipped off to the Cowboys, these two teams are playing for a top pick in the draft. We're passing.

**Sunday, November 4th**

**2★ MINNESOTA 27 Detroit 20.** Minnesota deserved better last week vs New Orleans as they led the Saints 13-10 right before halftime and were looking to add more but a long fumble-return changed the entire complexion of the game. Still the Vikings had a 423-270 yard advantage. Meanwhile the Lions were run over at home by the Seahawks. The Lions this week did surprisingly ship off Golden Tate to the Eagles. Tate was the Lions leading receiving this season. The Vikings should get a bounce back win here as they are 22-4 SU and 18-5-3 ATS as a home favorite since 2014.

**Kansas City 30 CLEVELAND 20.** Obviously, the big news here is the firings of Cleveland head coach Hue Jackson and OC Todd Haley on Monday. Jackson finishes his career in Cleveland at 3-36-1 SU and 14-26 ATS! DC Gregg Williams is the interim. The Browns are +11 in turnover margin this season but are still only 2-5-1. Since 1975 there have been 71 teams with a +11 turnover margin or better through 8 weeks, none had a losing record...except the 2018 Browns (via Warren Sharp)! Now they're taking on a Kansas City team off their first non-cover of the season in a 30-23 win over Denver. We lean with KC.

**2★ Pittsburgh 24 BALTIMORE 23.** Two teams heading in opposite directions as the Steelers have won and covered 3 straight while the Ravens have lost 3 of their last 4. Baltimore comes in wounded off back-to-back losses. Last week, they were surprisingly a 2.5-point road favorite at Carolina and proceeded to lose by 2 TD's. Meanwhile, the Steelers should be fresh off a bye and a win over Cleveland. Pittsburgh has revenge for a home loss to Baltimore earlier this year and the Steelers are 14-6-2 ATS as a division dog this century.

**CAROLINA 30 Tampa Bay 24.** After last week's dominant performance over Baltimore, the Panthers have now won 9 straight home games (7-2 ATS). Meanwhile, it's back to "FitzMagic" for the Bucs after Winston threw 4 picks last week vs Cincinnati. He was relieved with the Bucs down big and Fitzpatrick nearly led the huge come-

### Updated NFL Records: Straight Up, ATS and Over/Under

Team	Straight-Up			Against The Spread			Over/Under		
	Total	Home	Away	Total	Home	Away	Total	Home	Away
Arizona	2-6-0	1-4-0	1-2-0	4-4-0	3-2-0	1-2-0	3-5-0	1-4-0	2-1-0
Atlanta	3-4-0	3-2-0	0-2-0	2-5-0	2-3-0	0-2-0	5-2-0	4-1-0	1-1-0
Baltimore	4-4-0	2-1-0	2-3-0	4-4-0	2-1-0	2-3-0	3-5-0	1-2-0	2-3-0
Buffalo	2-6-0	1-2-0	1-4-0	3-5-0	1-2-0	2-3-0	2-6-0	1-2-0	1-4-0
Carolina	5-2-0	4-0-0	1-2-0	4-3-0	3-1-0	1-2-0	4-3-0	3-1-0	1-2-0
Chicago	4-3-0	3-1-0	1-2-0	4-3-0	3-1-0	1-2-0	4-3-0	2-2-0	2-1-0
Cincinnati	5-3-0	3-1-0	2-2-0	4-4-0	2-2-0	2-2-0	5-3-0	2-2-0	3-1-0
Cleveland	2-5-1	2-1-1	0-4-0	5-3-0	3-1-0	2-2-0	4-4-0	2-2-0	2-2-0
Dallas	3-4-0	3-0-0	0-4-0	3-4-0	2-1-0	1-3-0	2-5-0	2-1-0	0-4-0
Denver	3-5-0	2-2-0	1-3-0	3-4-1	1-2-1	2-2-0	3-5-0	1-3-0	2-2-0
Detroit	3-4-0	2-2-0	1-2-0	5-2-0	2-2-0	3-0-0	5-2-0	2-2-0	3-0-0
Green Bay	3-3-1	3-0-1	0-3-0	3-4-0	2-2-0	1-2-0	5-2-0	3-1-0	2-1-0
Houston	5-3-0	3-1-0	2-2-0	3-5-0	1-3-0	2-2-0	3-5-0	2-2-0	1-3-0
Indianapolis	3-5-0	1-2-0	2-3-0	4-4-0	1-2-0	3-2-0	5-3-0	2-1-0	3-2-0
Jacksonville	3-5-0	2-3-0	1-2-0	3-5-0	2-3-0	1-2-0	3-5-0	2-3-0	1-2-0
Kansas City	7-1-0	4-0-0	3-1-0	7-1-0	3-1-0	4-0-0	4-4-0	1-3-0	3-1-0
L.A. Chargers	5-2-0	3-1-0	2-1-0	3-4-0	1-3-0	2-1-0	5-2-0	2-2-0	3-0-0
L.A. Rams	8-0-0	4-0-0	4-0-0	4-3-1	2-1-1	2-2-0	3-5-0	2-2-0	1-3-0
Miami	4-4-0	3-1-0	1-3-0	4-4-0	3-1-0	1-3-0	5-3-0	4-0-0	1-3-0
Minnesota	4-3-1	2-2-0	2-1-1	4-3-1	2-2-0	2-1-1	4-4-0	1-3-0	3-1-0
New England	6-2-0	4-0-0	2-2-0	5-3-0	3-1-0	2-2-0	4-4-0	2-2-0	2-2-0
New Orleans	6-1-0	2-1-0	4-0-0	5-2-0	1-2-0	4-0-0	3-4-0	2-1-0	1-3-0
N.Y. Giants	1-7-0	0-4-0	1-3-0	3-5-0	0-4-0	3-1-0	3-5-0	1-3-0	2-2-0
N.Y. Jets	3-5-0	2-2-0	1-3-0	3-5-0	2-2-0	1-3-0	5-3-0	3-1-0	2-2-0
Oakland	1-6-0	1-3-0	0-3-0	2-5-0	1-3-0	1-2-0	3-4-0	2-2-0	1-2-0
Philadelphia	4-4-0	2-2-0	2-2-0	3-5-0	1-3-0	2-2-0	3-5-0	0-4-0	3-1-0
Pittsburgh	4-2-1	2-2-0	2-0-1	4-3-0	2-2-0	2-1-0	5-2-0	3-1-0	2-1-0
San Francisco	1-7-0	1-2-0	0-5-0	2-6-0	0-3-0	2-3-0	5-3-0	2-1-0	3-2-0
Seattle	4-3-0	1-1-0	3-2-0	4-2-1	2-0-0	2-2-1	2-5-0	1-1-0	1-4-0
Tampa Bay	3-4-0	2-1-0	1-3-0	3-4-0	1-2-0	2-2-0	6-1-0	2-1-0	4-0-0
Tennessee	3-4-0	2-1-0	1-3-0	4-3-0	2-1-0	2-2-0	2-5-0	1-2-0	1-3-0
Washington	5-2-0	3-1-0	2-1-0	5-2-0	3-1-0	2-1-0	2-5-0	1-3-0	1-2-0

from-behind win. Remarkably Fitzpatrick has the No. 1 passer rating in the league right now (Not Mahomes or Brees). We're passing.

**MIAMI 24 N.Y. Jets 20.** After their 3-0 SU/ATS start that included a 20-12 win in New York, the Dolphins are just 1-4 SU/ATS in their last 5 games. We still don't know when QB Tannehill will return from injury. Last Thursday, they were in a bad spot traveling on a short week and wore out in the second half vs Houston. They should be in a better spot here catching a Jets team on back-to-back road games. Last week in the "Windy City" the Jets offense was held to just 207 yards in the double-digit loss to the Bears. Slightest of leans on Miami.

**WASHINGTON 26 Atlanta 24.** The Redskins are off to their best start in 10 years after beating the Giants last week. The defense has held 6 of their 7 opponents to 21 points or less and RB Adrian Peterson is having a shockingly good season. However, they're catching a Falcons team fresh off a bye and two straight wins (albeit they came against Tampa Bay and the N.Y. Giants). While QB Ryan is having a great season (15-2 TD-to-INT ratio) we worry about him playing on grass (see Pittsburgh game earlier this year). We do lean OVER.

**Chicago 23 BUFFALO 15.** The last and only time since 1989 that the Bears were a double-digit road favorite came back in 2006 when they beat Arizona 24-23 (-11.5) in what led to the infamous Denny Green "we let them off the hook" post-game press conference. The Bears are fresh off an easy win over the Jets. They're catching the Bills off a Monday Nighter in which they should have covered vs the Patriots if not for a late "Pick 6" by Derek Anderson. Not sure what the Bears motivation is here with 3 big division games on deck. We lean with the big home dog once again.

**Houston 24 DENVER 23.** One of the bigger stories here is that Denver WR Thomas was traded to the Texans on Tuesday. That fills a position of need for Houston who lost No. 2 WR Fuller to injury. Houston has to feel like they are contenders now with 5 straight wins. Last Thursday, QB Watson had more TD's (5) than incompletions (4) as they rolled over Miami in the second half. Meanwhile Denver had a solid performance in Arrowhead last week as they had a 411-340 yard edge in a cover against the Chiefs. However, QB Keenum has thrown a pick in all 8 games this season. We lean with the Texans.

**3★ SEATTLE 27 L.A. Chargers 20.** Seattle is 4-1 SU in their last 5 games and the only loss came by 2 points to the unbeaten L.A. Rams. Last week Seattle, off a bye crushed the Lions 28-14 thanks again to a powerful run game led by RB Carson who has topped 100 yards in 3 of their last 4 games. The Chargers do come in off a bye after surviving the Titans in London. Joey Bosa will remain out for this game but the Chargers should get back RB Melvin Gordon. This should be an emotional crowd as it is the first home game since the death of Seattle owner Paul Allen. We'll back the home team who is 54-18 SU/44-26-2 ATS (63%) here since 2010.

**NEW ORLEANS 30 L.A. Rams 28.** Arguably the game of the year so far this NFL season with the 8-0 Rams taking on a New Orleans team that has won 6 straight. Obvious playoff implications here. Last week the Saints got a misleading 10-point win at Minnesota as two big TO's were the difference (Saints outgained 423-270). On the other side, obviously the big news with the Rams involved RB Gurley taking a knee instead of scoring a TD late that would've given the Rams the game day cover over the Packers. If you bet with us on these pages last week at Green Bay +9.5, it wouldn't have mattered and do note the Rams were actually trailing in that game late. Still, L.A. is off to their best start since 1969. We'll sit back and eat the popcorn here.

**NEW ENGLAND 31 Green Bay 27.** Tough spot for Green Bay here on back-to-back road trips, first flying across the country and playing the NFL's best team the Rams to the wire and now face the AFC's best team in the Patriots here. Who knows what Rodgers would have done if not for that late fumble by Montgomery last week. Meanwhile, New England is on a short week after dispatching Buffalo on Monday Night. It was a bit deceiving as the Pats got a late "Pick 6" for the cover. This should be another classic as we lean with the Packers.

**Monday, November 5th**

**DALLAS 23 Tennessee 19.** Both teams come in off a bye. The Cowboys were busy during the bye as they picked up a No. 1 WR in Amari Cooper from Oakland in exchange for a 1st-rounder. That certainly gives Dak a weapon he didn't have all season and puts the Cowboys back in the mix for the playoffs. Tennessee has been aggressive during games under first-year coach Vrabel and elected to go for 2 in London vs the Chargers in their last game but came up just short. We certainly prefer him over Dallas head coach Garrett. This line looks a bit steep. We lean with the dog.

**Just missed the cut: Tennessee +6.5 over Dallas.**

