

LANE
PREPAREDNESS
COALITION



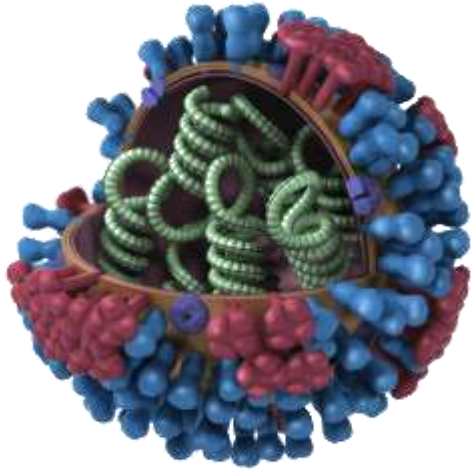
Winter is coming:
Annual Preparedness workshop
November 8, 2017

AGENDA

- Call to order and Welcome
 - LPC Chair Ken Vogeney
- 5 guest presentations today
- Q&A at the end

Presentations:

- 1) Influenza Update (Lane Co Public Health)
- 2) Inclement Weather Coordination-Basecamp (University of Oregon)
- 3) Winter Weather Safety (Eugene Water and Electric Board)
- 4) Public Works Response (City of Eugene Public Works)
- 5) Winter Weather Projections (National Weather Service)




Influenza Update

Cindy Morgan, RN, MSN
Program Supervisor, Communicable Diseases, Lane
County Public Health

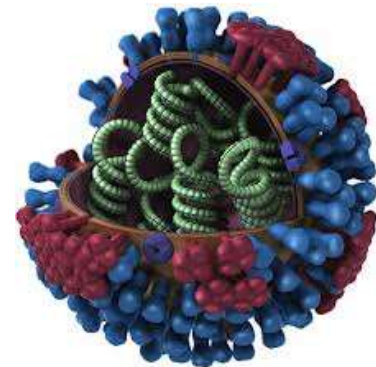
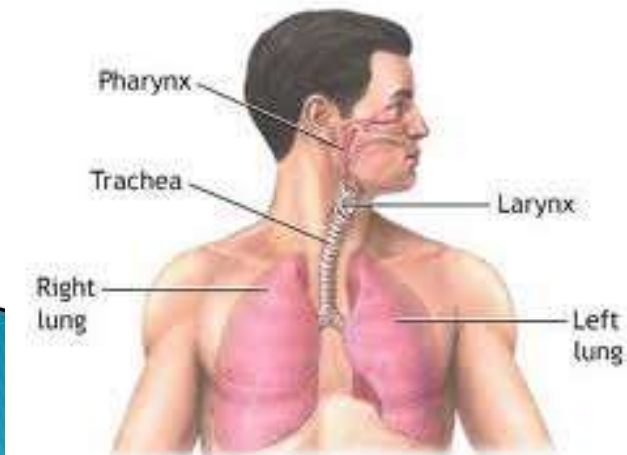


Objectives:

- ▶ Influenza Review
 - ▶ Signs & Symptoms
 - ▶ Flu Vaccine
 - ▶ Flu Data
- 

What is Influenza?

The flu is a contagious respiratory illness caused by influenza viruses that infect the nose, throat, and lungs. It can cause mild to severe illness, and can sometimes lead to hospitalization and death.



How the Flu Spreads:

Flu viruses spread mainly by droplets



It is also possible to contract the flu by touching an infected surface or object and then touching your own mouth, eyes, or nose.

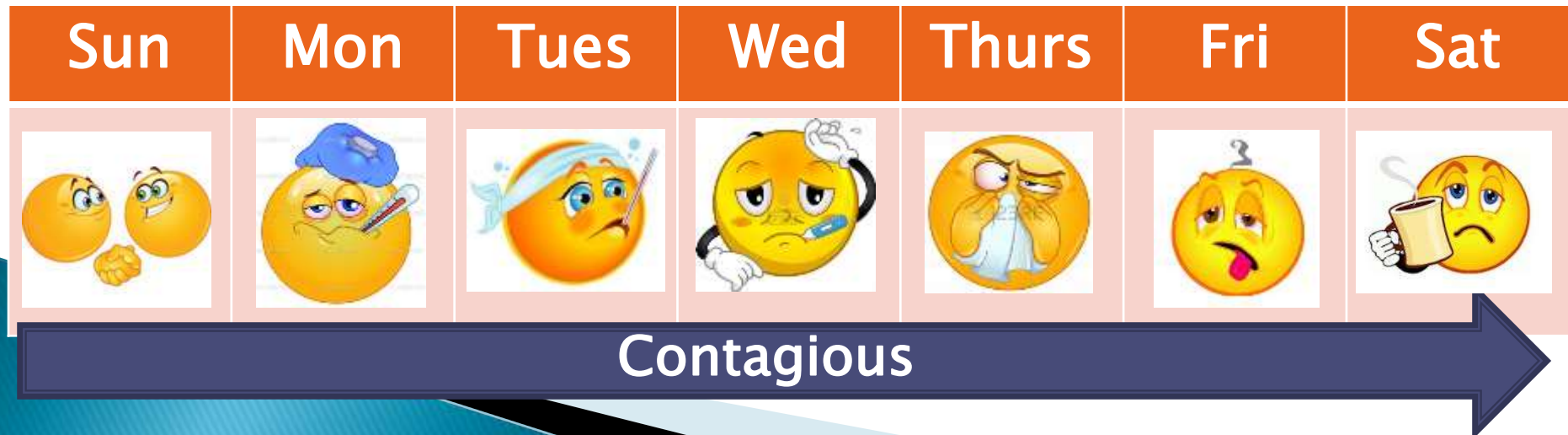
Incubation Period:



Typical incubation period for influenza is 1 to 4 days
(Average: 2 days)

Period of Contagiousness:

Most healthy adults can infect others beginning 1 day **before** symptoms occur and up to 5–7 days **after** becoming sick.



Cold vs. Flu

Symptom	Influenza	Common Cold
Fever	Usual	Uncommon
Headache	Prominent	Uncommon
Muscle/ Joint aches	Usual	Slight
Exhaustion	Early and Prominent	Rare and Mild
Upper Resp. Sx	Sometimes	Usual
Chest Discomfort	Common (+/- severe)	Uncommon & Mild
Prevention	Hygiene and Vaccine	Respiratory hygiene
Treatment	Anti-Virals	None

Influenza Vaccine



Vaccine Strains 17'-18'

1. Influenza A- Michigan /2015 / H1N1
2. Influenza A- Hong Kong / 2014 /H3N2
3. Influenza B- Brisbane/ 2008 (Trivalent)
4. Influenza B- Phuket/ 2013 (Quadrivalent)



Flu Vaccines Presentations

- **Standard Intramuscular Vaccine**

- Trivalent (3 strains)
- Quadrivalent (4 strains)



- **High-Dose Intramuscular Vaccine**

- Approved for people 65 and older



- **Intradermal vaccine**

- Injected into the skin instead of the muscle
- Approved for ages 18-64



Changes in Recommendations:

Egg Allergy?

- ▶ **CDC guidance says anyone with an egg allergy can receive any licensed flu vaccine**
 - Vaccine should be administered in an inpatient or outpatient medical setting and should be supervised by HCP able to recognize and manage severe allergic conditions
 - No longer have to wait 30 min. after getting vaccine
- ▶ **CDC study found that rate of anaphylaxis after all vaccine is only 1.3 per one million vaccine doses given.**

<http://www.cdc.gov/flu/protect/vaccine/quadrivalent.htm>



FLU VACCINE CATEGORIES



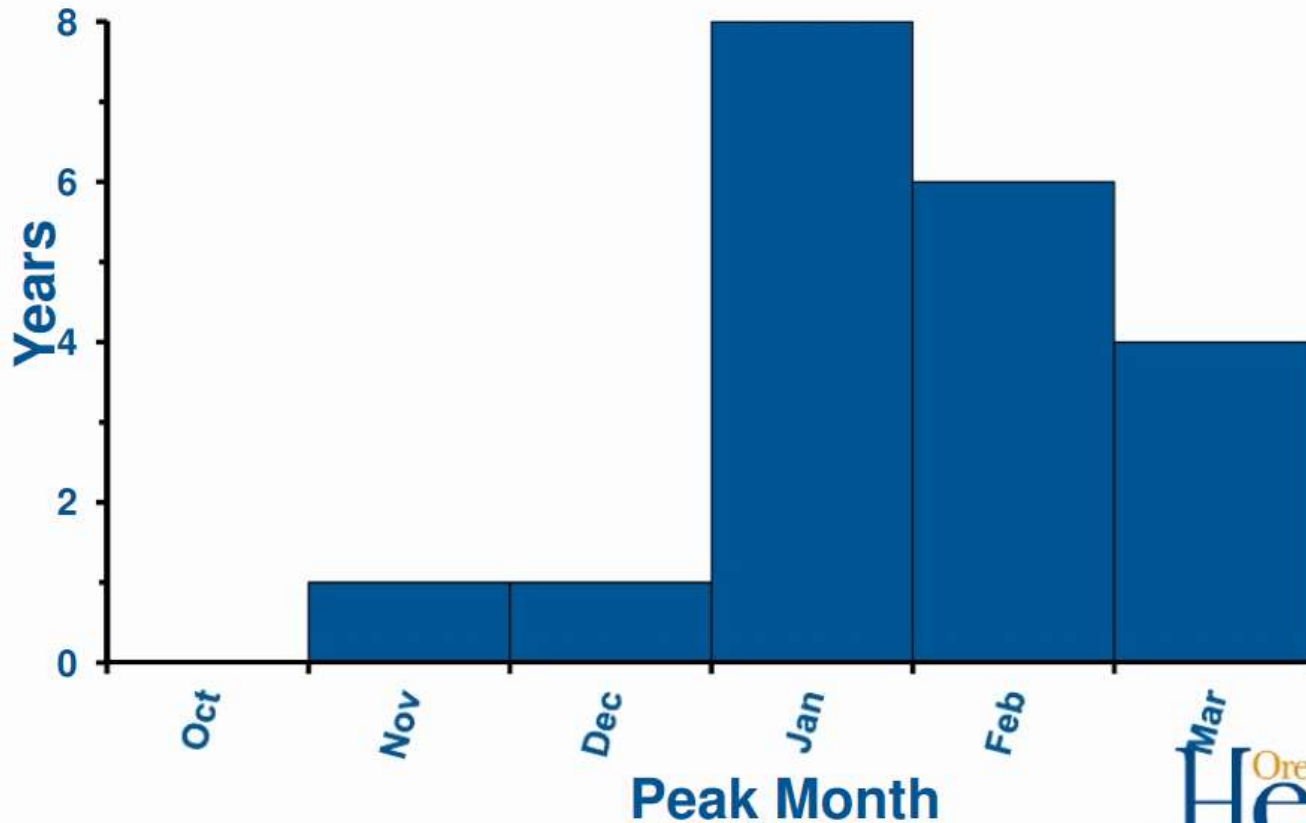
ANY QUESTIONS?



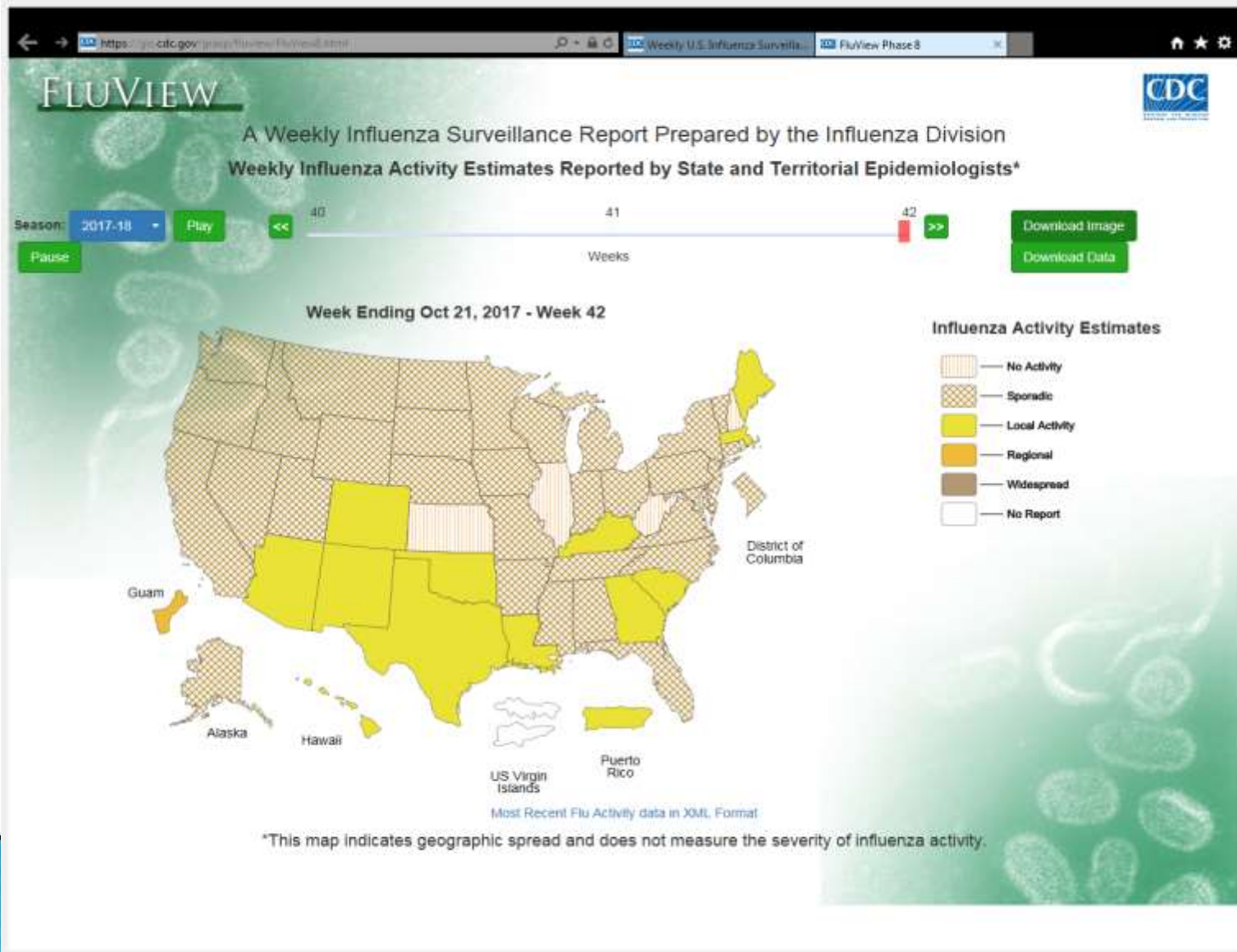


Influenza is unpredictable and every flu season is different. Influenza activity often begins to increase in October and November. Most of the time flu activity peaks between December and March and can last as late as May.

Peak Month of Influenza Activity Oregon, 1996–2016



What flu season is doing now...

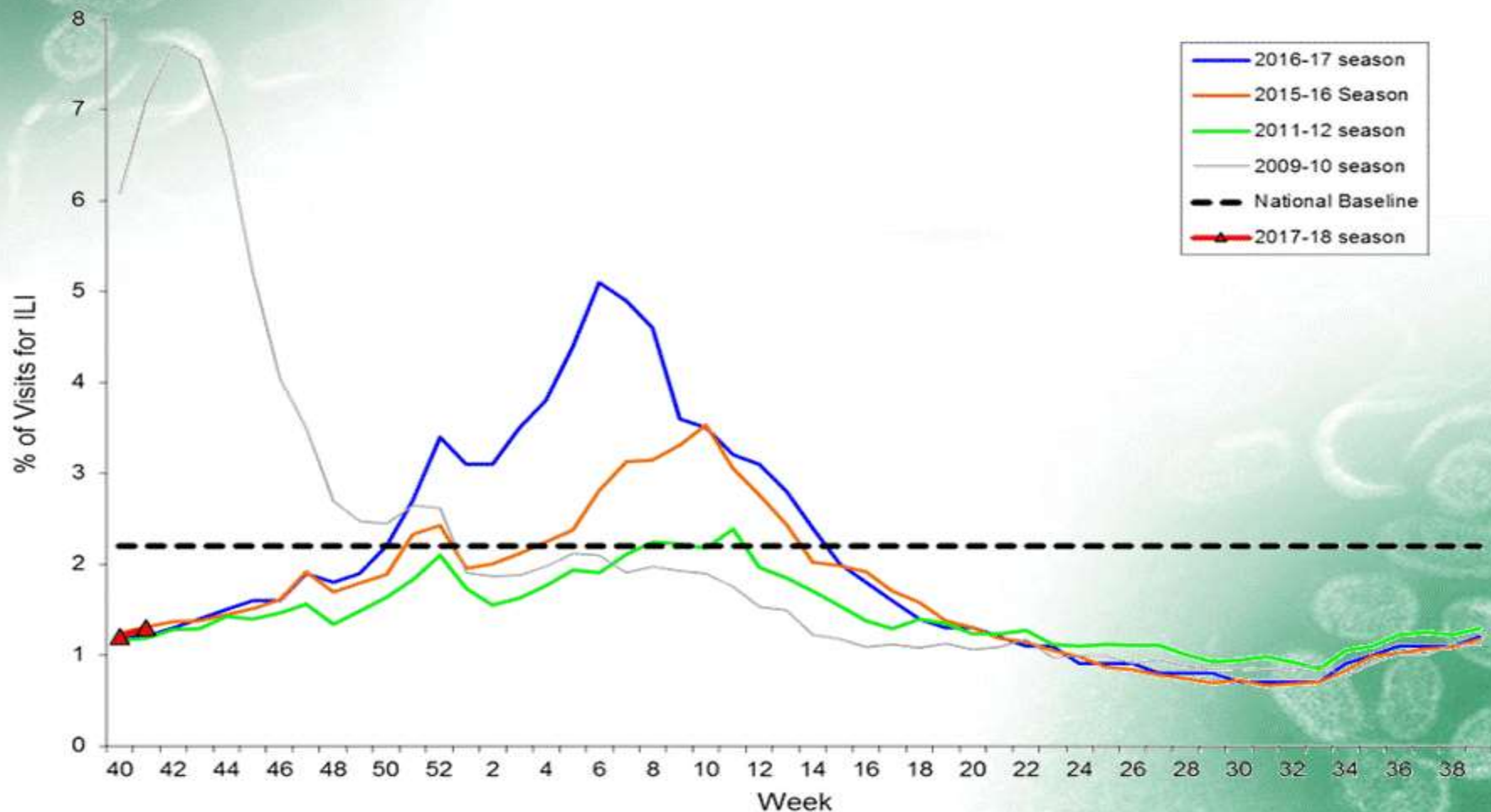


FLUVIEW



A Weekly Influenza Surveillance Report Prepared by the Influenza Division

Percentage of Visits for Influenza-like Illness (ILI) Reported by the U.S. Outpatient Influenza-like Illness Surveillance Network (ILINet), Weekly National Summary, 2017-2018 and Selected Previous Seasons



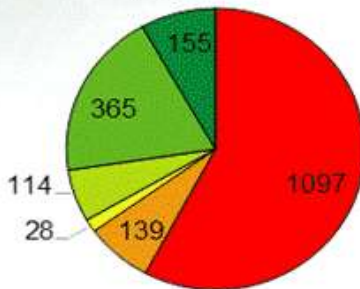
FLUVIEW



A Weekly Influenza Surveillance Report Prepared by the Influenza Division

Sequence Results, by Genetic Group, of Specimens Submitted to CDC
by U.S. Public Health Laboratories, Cumulative,
May 21 - October 14, 2017

Influenza Positive Specimens Reported by
U.S. Public Health Laboratories,
Cumulative, May 21 - October 14, 2017



- Influenza A(H3)
- Influenza A(H1pdm09)
- Influenza A(subtype unknown)
- Influenza B Victoria
- Influenza B Yamagata
- Influenza B (lineage not determined)

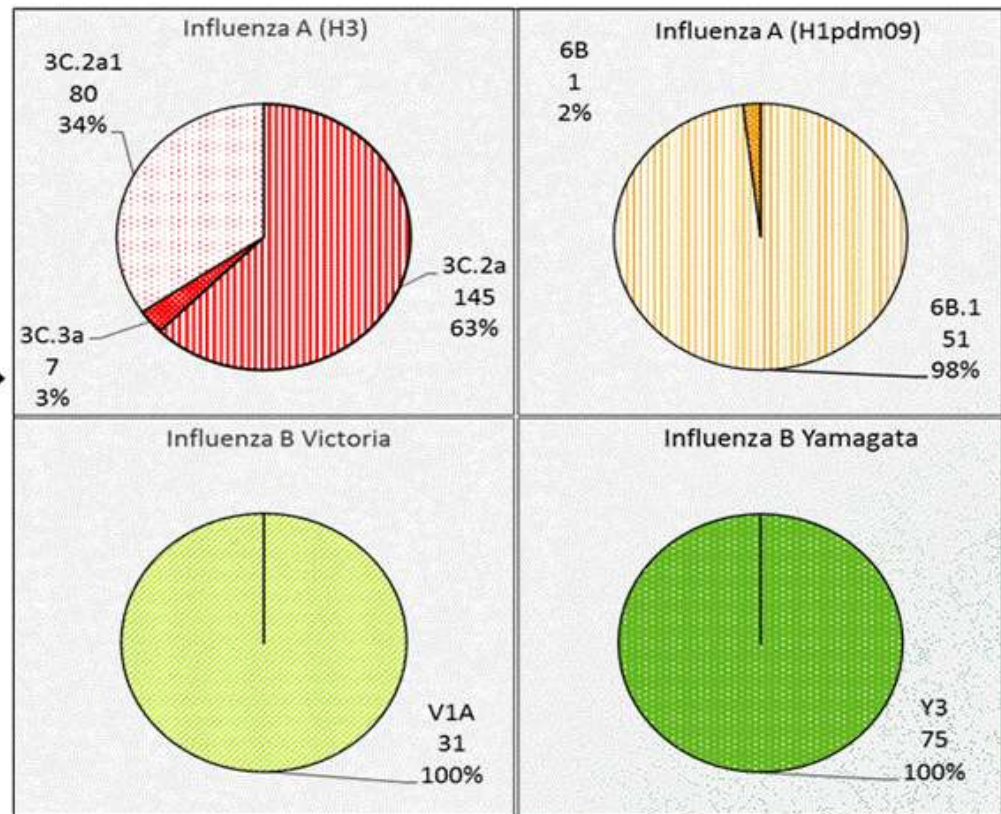
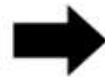
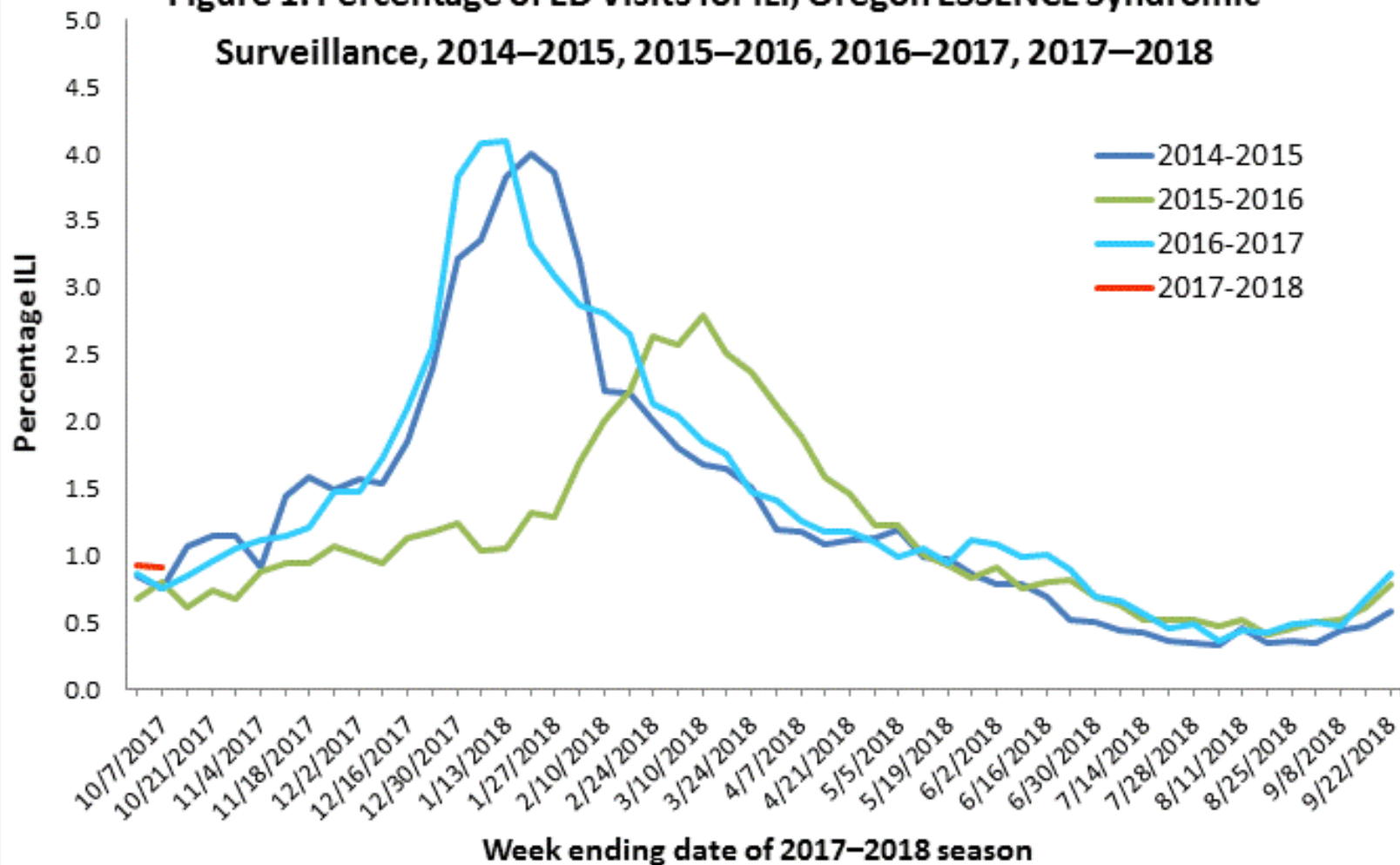
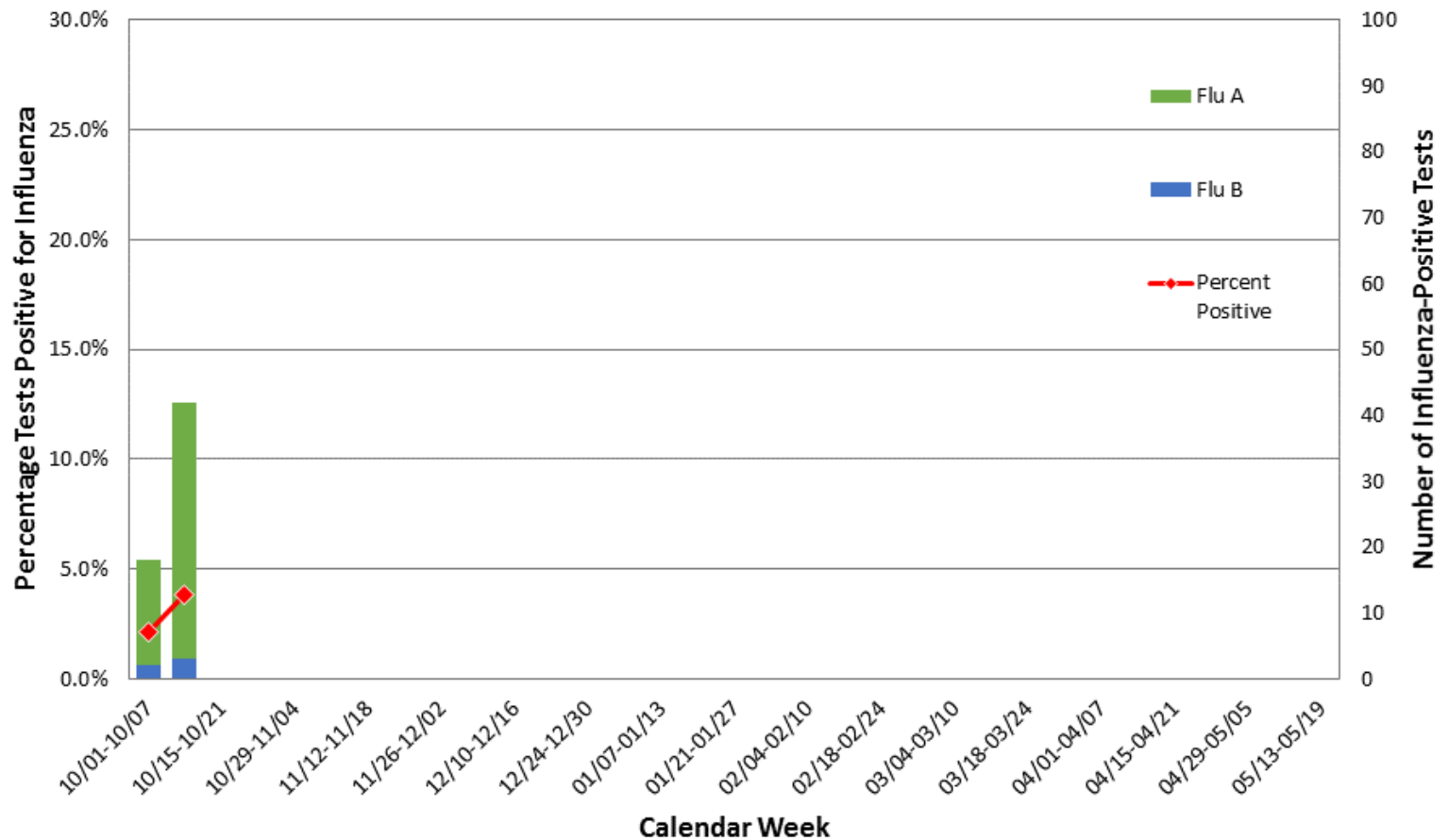


Figure 1. Percentage of ED Visits for ILI, Oregon ESSENCE Syndromic Surveillance, 2014–2015, 2015–2016, 2016–2017, 2017–2018



Oregon 2017-18 Data

**Figure 2. Oregon Influenza Surveillance
Percent Positive Influenza Tests by Week, NREVSS
2017-2018 Season**



Lane County:

- ▶ We have not seen any lab confirmed Influenza in the community
- ▶ Some rapid testing has identified Influenza A however these point of services tests are not reliable early in the season



Flu Impact:

- USA data (CDC):
 - Average ~200,000 hospitalizations/year
 - Average 36,000 deaths/year
 - (range from 1976 to 2007 was 3,000 to 49,000)
- Lane County's yearly direct medical costs from Flu (AHRQ Healthcare Cost and Utilization Project):
 - Inpatient care: \$1.5 million
 - Outpatient care: \$11 million



INCLEMENT WEATHER COORDINATION

University of Oregon Basecamp Overview

Becca Puleo

Emergency Management Specialist

Safety and Risk Services

University of Oregon

WHAT AND WHY?

- Basecamp is a web based collaboration tool.
- To share real-time information on developing inclement weather situations in the Southern Willamette Valley.
- The intention is that quick information sharing will assist agencies with making operational decisions.

WHO:

- University of Oregon (host)
- City of Eugene
 - Public Works
 - Emergency Mgmt.
- City of Springfield
 - Emergency Mgmt.
 - Street Maintenance
- Utilities
 - EWEB
 - Rainbow
- K-12 schools
- Lane Community College
- PeaceHealth
- Lane County
- ODOT

EXAMPLES

Situation Report Request



From: Andre LeDuc

Date: Mon, 9 Dec 2013 at 8:06am

Category: [Road Conditions](#)

We were hoping to get a situation report for roads and LTD.

The UO is still planning to open at 10 AM

thanks,

-Andre

EXAMPLES



Kelly Staines Mon, 9 Dec 2013 at 9:34am via email



LTD is running alternate routing in the south hills; four routes are on snow and ice detour. The rest of the system is operating normally, for the most part.

Kelly Staines

Lane Transit District

Facilities Maintenance Supervisor

cell: 541.501.9426

phone: 541.682.6130

kelly.staines@ltd.org <mailto:kelly.staines@ltd.org>



Eric Johnson Mon, 9 Dec 2013 at 11:33am



Eugene Public Works continues to operate it's emergency command center (ECC) during snow/ice response. Crews have been at it around the clock since Friday morning. Priority #1 arterial streets have seen some improvements during the day but continue to refreeze and become slick by early evening. Priority #2 and #3 collector and residential streets still have significant snow pack which will turn to slush once the temps increase presenting drivers with another driving challenge. Feel free to contact Public Works for updated road condition.

Eric Johnson

Surface Operations Manager

EXAMPLES



Krista Dillon Wed, 4 Jan at 3:16pm



Can we get an update on road conditions from Eugene Public Works?
Thanks,
Krista



Brian Richardson Wed, 4 Jan at 3:26pm



Most of primary arterials are slush and wet pavement at this point. We are plowing as much slush to the side of the road before it refreezes. Our elevated arterials, like Willamette & 30th, are still experiencing slick conditions with packed snow and ice.

We are plowing slush and sanding on packed snow and ice in advance of the primary commute times.

Most neighborhood streets have not seen a response due to our focus on arterials and collectors.

Anything with packed snow or slush will certainly freeze overnight. We will sand those locations and attempt to get into some of our neighborhood streets overnight.

We plan on sanding arterials and collectors prior to tomorrow's commute as needed.

Please let me know if you have any other questions.

WEDNESDAY, 4 JANUARY 2017

Message	Pleasant Hill Schools Closed for Thursday, Jan. 5	Posted by Tony S.
Comment	Re: UO Status Update	Posted by Kathleen R.
Message	UO Status Update	Posted by Krista D.
Message	City of Springfield Snow Response	Posted by Ken V.
Comment	Re: Eugene Public Works is Sanding & Plowing - Ice & Snow Emergency Declared	Posted by Brian R.
Comment	Re: Eugene Public Works is Sanding & Plowing - Ice & Snow Emergency Declared	Posted by Krista D.
Comment	Re: PeaceHealth Stands up Network Incident Command	Posted by Jim C.
Message	PeaceHealth Stands up Network Incident Command	Posted by Jim C.
Comment	Re: Eugene Public Works is Sanding & Plowing - Ice & Snow Emergency Declared	Posted by Kelly S.
Comment	Re: Eugene Public Works is Sanding & Plowing - Ice & Snow Emergency Declared	Posted by Andre L.
Comment	Re: Eugene Public Works is Sanding & Plowing - Ice & Snow Emergency Declared	Posted by Kelly S.
File	 image002.jpg	Uploaded by Brian R.
Comment	Re: Eugene Public Works is Sanding & Plowing - Ice & Snow Emergency Declared	Posted by Brian R.
Message	Eugene Public Works is Sanding & Plowing - Ice & Snow Emergency Declared	Posted by Kristi H.
Message	Pleasant Hill Schools Closed Today	Posted by Tony S.

POSTING MESSAGES

- Login to basecampHQ.com
 - If you forgot your password email uoem@uoregon.edu
- Use the Basecamp app

Inclement Weather Coordination VECC (Virtual Emergency Coordination Center)

All Messages

[Expanded view](#) | [List view](#)

Most active discussions

Smoke Issues



[Latest comment 5 Sep](#) by Ken Vogeney
4 comments posted

UO Status



[Latest comment 5 Sep](#) by Steve Stuckmeyer
1 comment posted

Update on Eugene Road conditions



[Latest comment 9 Jan](#) by Jace Smith
2 comments posted

 **Post a new message**

Categories

[Edit](#)

All Messages

[Miscellaneous](#)

[Plans, Policies, & Procedures](#)

[Road Conditions](#)

[Schools](#)

[Situation Report](#)

[Weather Report](#)



[Post a message via email](#)

Post a new message

Title

Bus routes and schedules

Category No category

Bold

No category
Miscellaneous
Plans, Policies, & Procedures
Road Conditions
Schools
Situation Report
Weather Report
— add a new category —



EMAIL RESPONSES

- Blessing and a curse
 - Messages are delivered to your email inbox so you don't have to sign in to Basecamp to receive messages.
 - However, keep in mind that replying to any Basecamp message (whether from your own email or within Basecamp) will be a **“reply all”**
- Unsubscribing from notifications is available
- If your response is for a subgroup only, forward the message to just those people just like you would a normal message.

GET ADDED TO THE LIST

- Email uoem@uoregon.edu
- Include your agency name
- You will receive a confirmation email from Basecamp with a link to set up your password

Winter Weather Preparedness

EWEB

Doug McGillivray

Emergency Program Manager
Eugene Water and Electric Board

Winter Weather Preparedness

- Are **YOU really** ready for Winter?
 - Emergency kit or 'GO' bag?
- How about your **FAMILY**?
 - How would they fare if you're not at home?
 - Food, Water, Generator?
- Is your **HOUSE** ready for Winter?
 - Insulation?
 - Outside hose bibs covered?
 - Exterior lights working?



Weathering Winter Safely!

- You know the basics already – right?
 - Diet,
 - Rest,
 - Medicine,
 - Alcohol/high levels of caffeine
- **Be AWARE:**
 - Frostnip
 - Superficial Frostbite
 - Frostbite or Deep Frostbite



YOU NEED TO KNOW!

- **FROSTNIP:** Tingling, redness
- Tx; Warm slowly, don't rub, warm body, cover

- **SUPERFICIAL FROSTBITE:** Pain → numbness, blisters
- Tx; Do NOT warm extremities first, core only, no caffeine, do NOT rub, Don't pop blisters

- **DEEP FROSTBITE:** Hardness of tissue, whitish color, painless, possible necrosis (black)
- Tx; **This is an emergency**, keep frozen, get to DR.
 - WHY!

Slips and Falls



“Same level falls”, like slips and trips, account for roughly 65% of fall injuries.



PREVENTATIVE MEASURES

Plow or sand parking lots

Shovel Walkways

Document Near Misses & Accidents



Slips and Falls

- **PREVENTATIVE MEASURES**
- Plow or sand parking lots
- Shovel Walkways
- Document Near Misses & Accidents
- Proper Footwear can make the difference.



CITY OF EUGENE WINTER WEATHER RESPONSE

Eric Johnson

Surface Operations Manager
City of Eugene Public Works

Eugene Public Works Winter Weather Hazards

- Snow and Ice
- Flooding
- Tree failures-Wind and Ice Storms

Snow and Ice Training



Flood Control Training



Tree Hazard Training

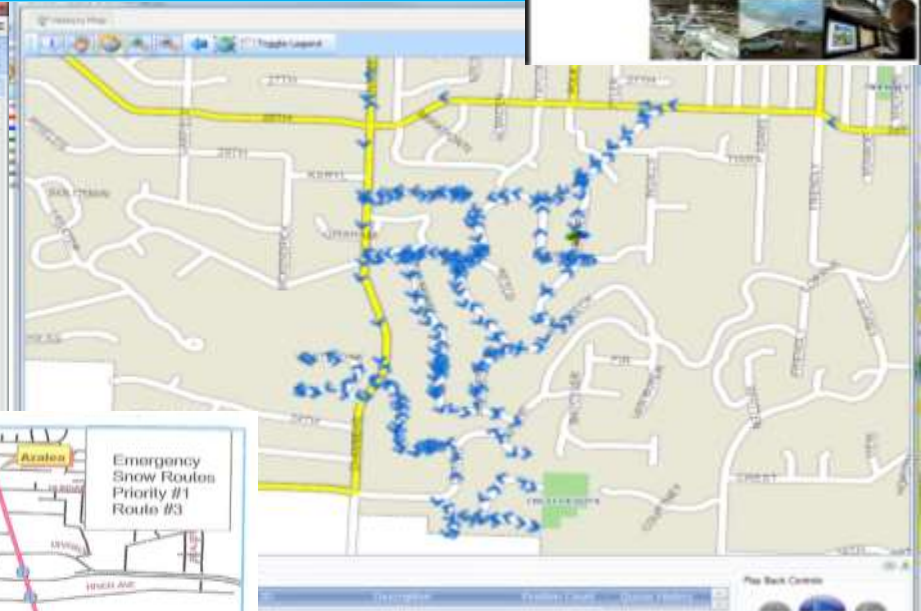


Emergency Command Center Roosevelt yard facility



Public Works - Maintenance Management System

Asset ID	Asset Name	Location	Status	Priority	Due Date
10001	Street Light	10001	Operational	Low	2023-12-31
10002	Street Light	10002	Operational	Low	2023-12-31
10003	Street Light	10003	Operational	Low	2023-12-31
10004	Street Light	10004	Operational	Low	2023-12-31
10005	Street Light	10005	Operational	Low	2023-12-31
10006	Street Light	10006	Operational	Low	2023-12-31
10007	Street Light	10007	Operational	Low	2023-12-31
10008	Street Light	10008	Operational	Low	2023-12-31
10009	Street Light	10009	Operational	Low	2023-12-31
10010	Street Light	10010	Operational	Low	2023-12-31



Emergency staff resources Roosevelt yard facility



200 + staff

Weekday 24/7 operations year-round

Weekend day shift (Parks) year-round

Weekend standby staff year-round

24/7 On-Call Supervisor year-round

Snow and Ice removal resources

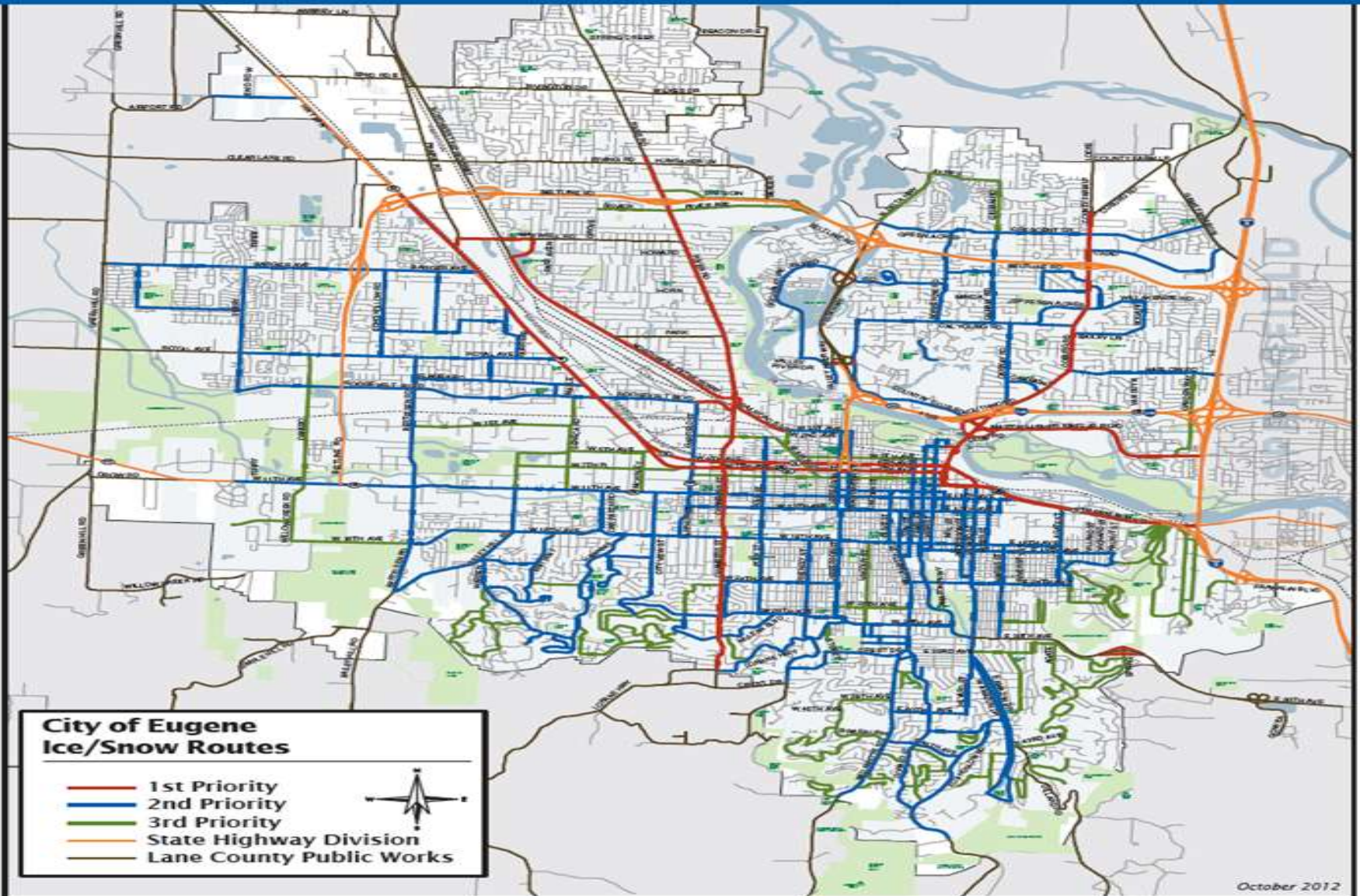
- 
- 8 snow plows
 - 7 sanders/deicers
 - 2 deicing trucks
 - 2 deicing storage tanks (16,500 gallons)
 - 500 yard stockpile of sanding rock

Snow and Ice removal resources



Snow Routes 600+ lane miles

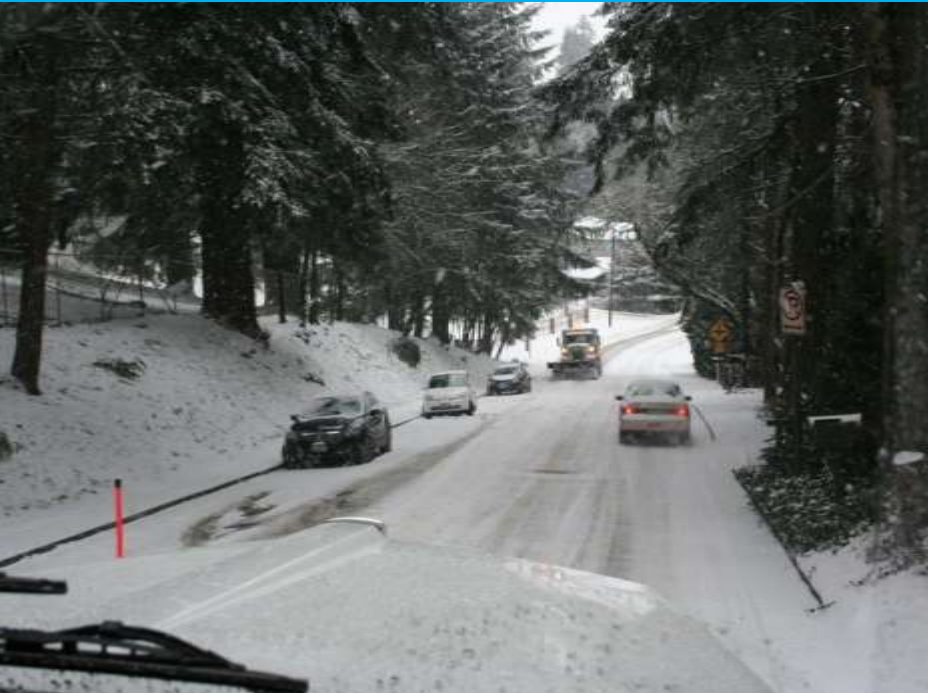
Emergency Ice/Snow Routes



Snow and Ice removal



Snow and Ice removal

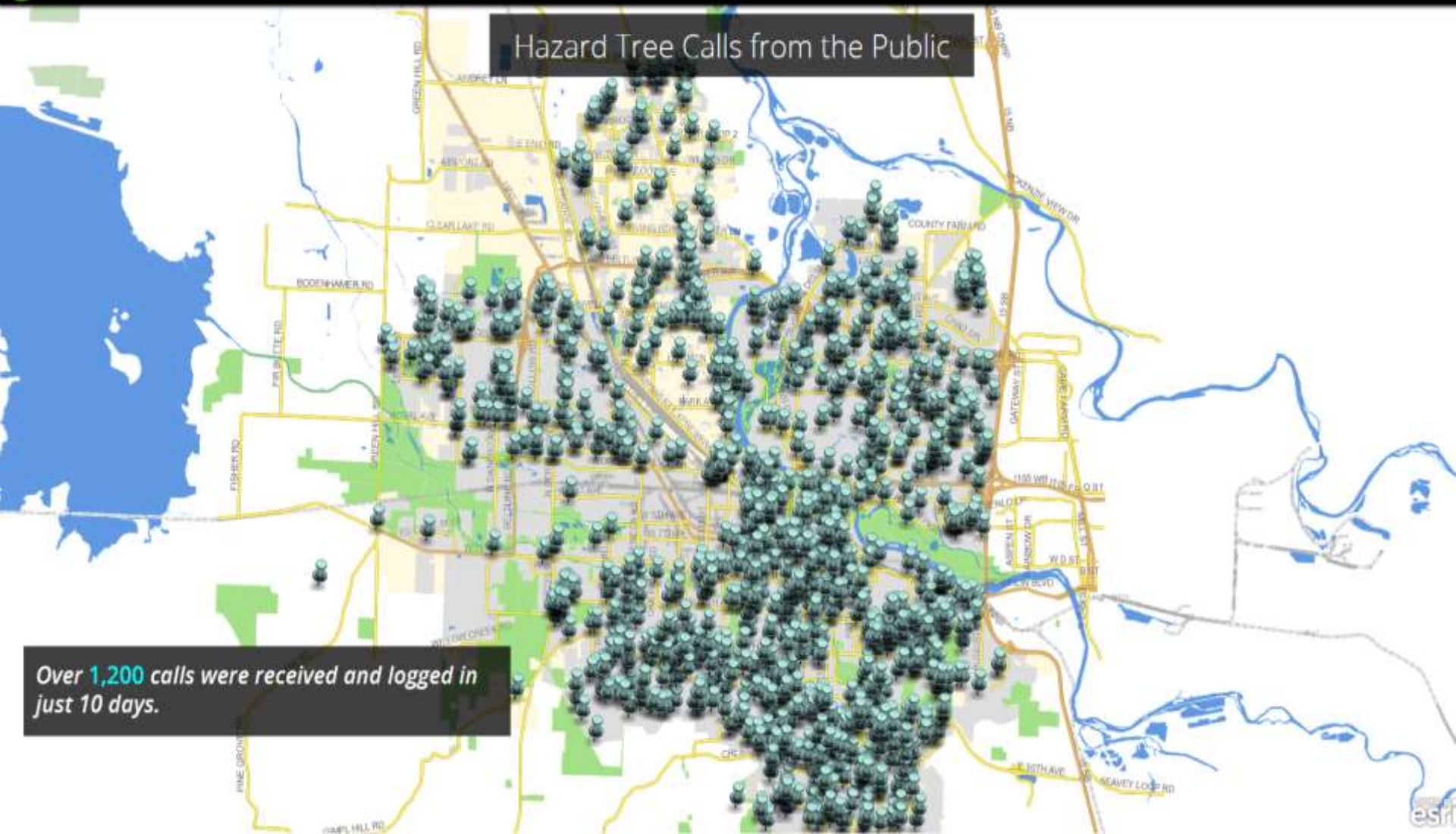


Winter 2016/17 Ice Storm

Tree calls

December 14, 2016 Ice Storm Hazard Trees

Share the story



Tree Hazard Response Dashboard (tree scouts)



Winter Storm Event 2016/17-Tree Damage

30,000 labor hrs., 3,500 tree failures, 1000 dump truck loads = \$1.5 M FEMA reimb.



Winter 2016/17



Questions?




NWS- National Weather Service Portland Office

Andy Bryant
Service Hydrologist

OVERVIEW

National Weather Service

- What happened last winter
 - Outlook for this winter
 - Tools for Decision Making

SERIOUSLY, what  happened last winter?

Winter 2016-17 Review

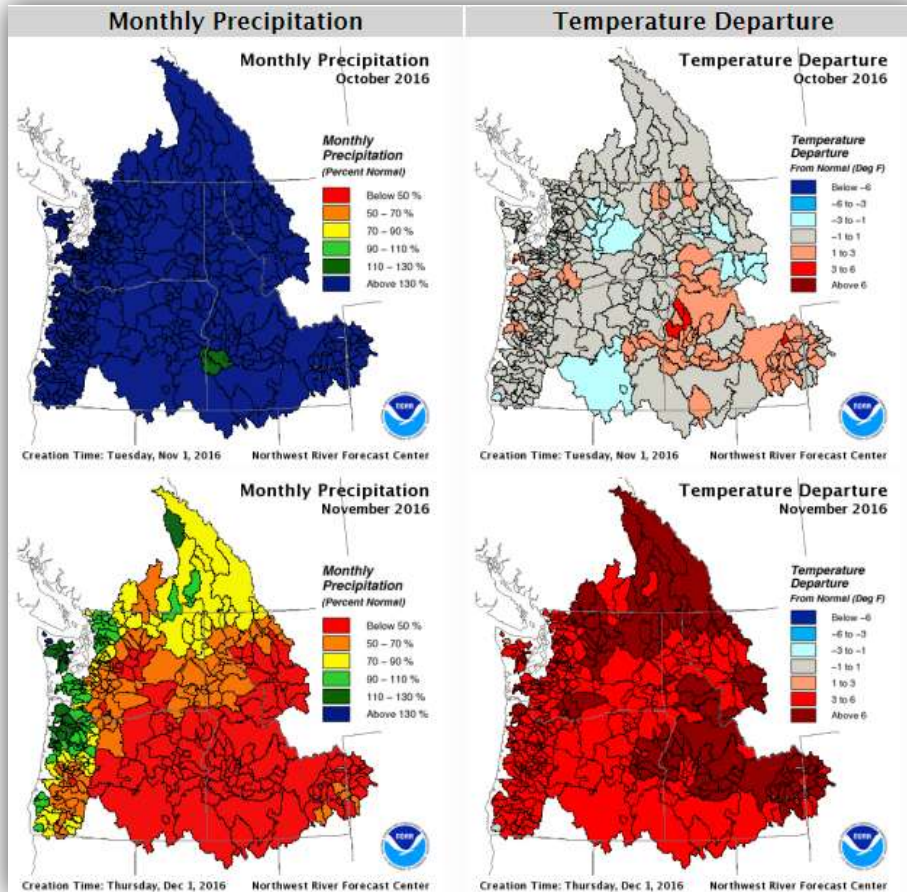
What do you remember about last winter?



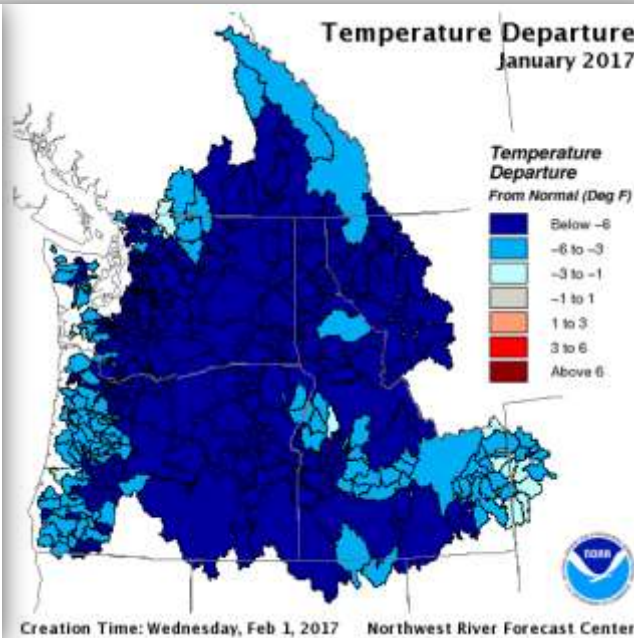
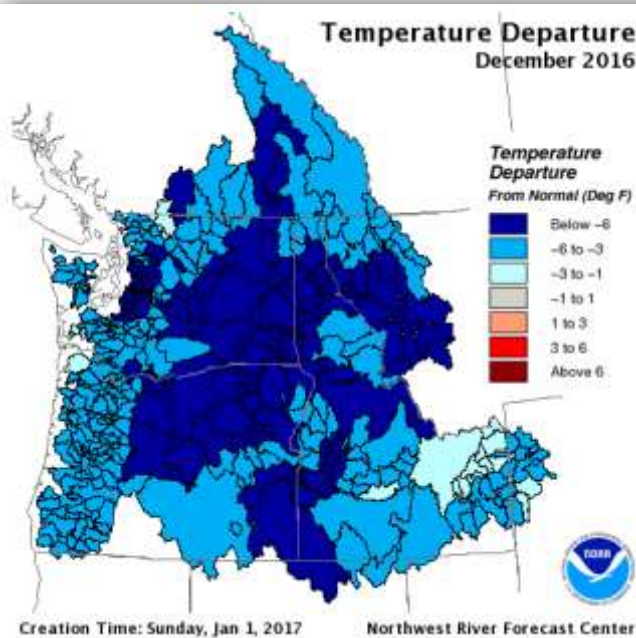
Eugene Police Dept. @EugenePolice · 18m
Please drive slow! Extremely slick conditions on Delta Highway and surrounding areas! facebook.com/EugenePolice



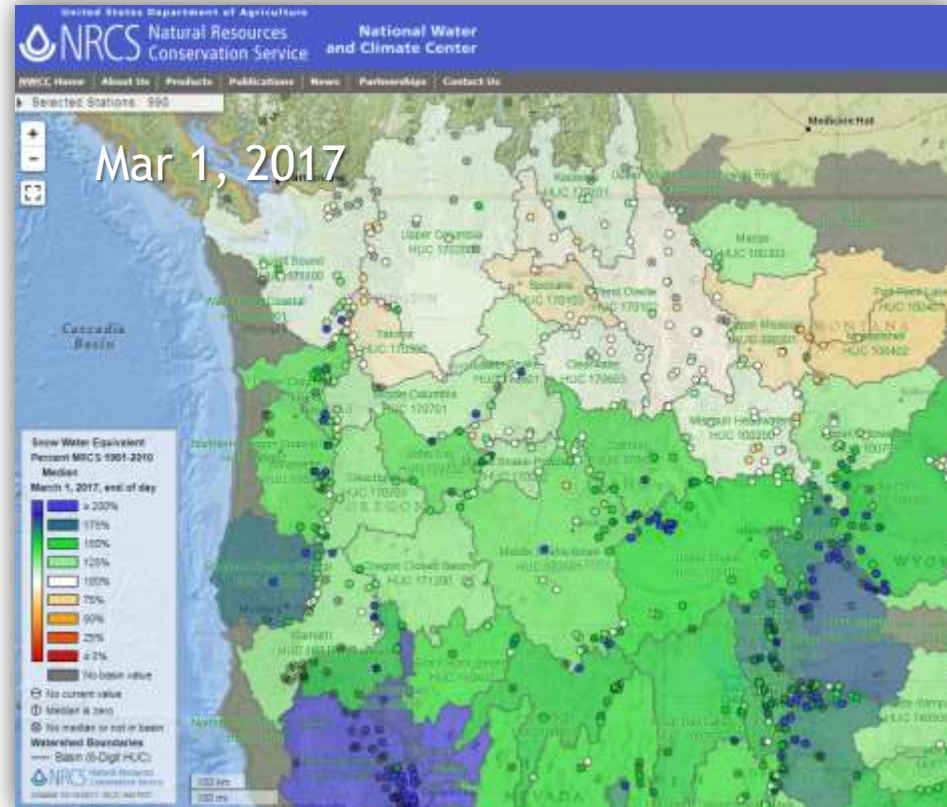
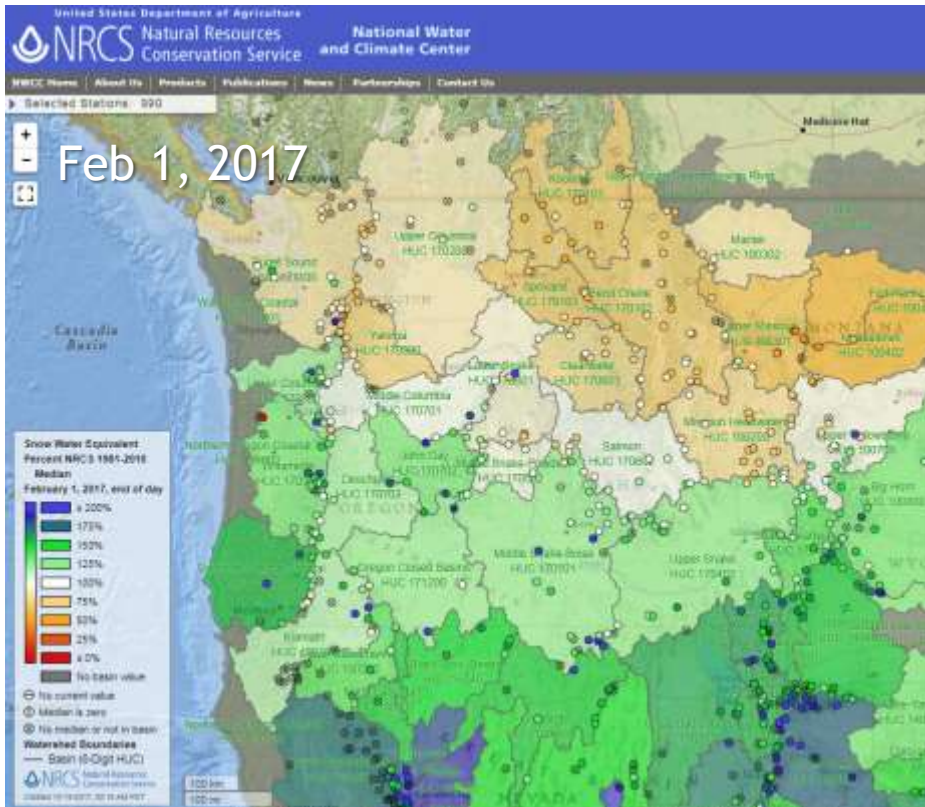
October & November 2016



December 2016 & January 2017

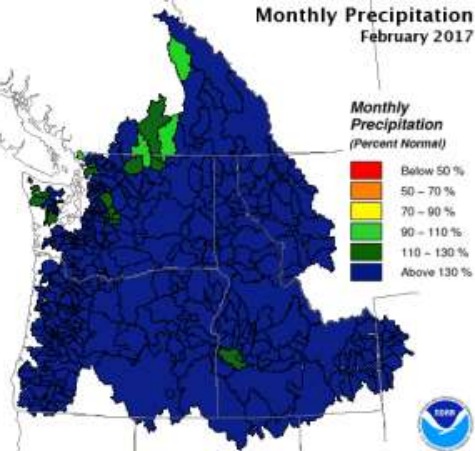
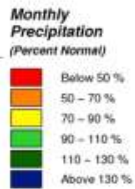


Late Winter 2016-17 Snowpack



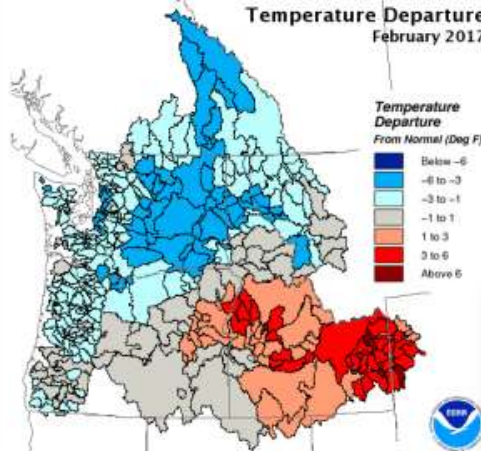
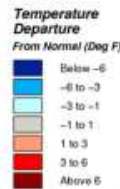
February & March 2017

Monthly Precipitation
February 2017



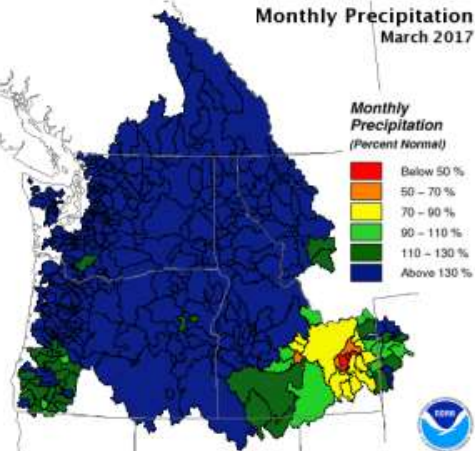
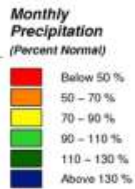
Creation Time: Wednesday, Mar 1, 2017 Northwest River Forecast Center

Temperature Departure
February 2017



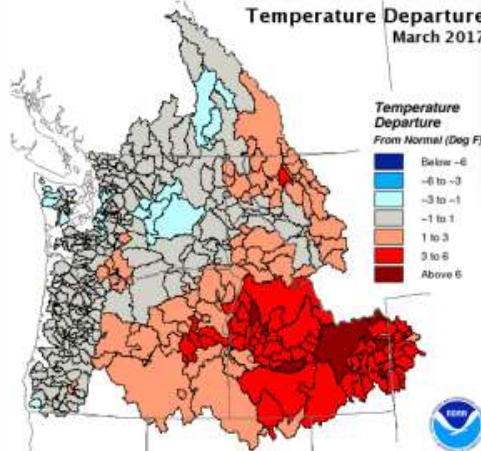
Creation Time: Wednesday, Mar 1, 2017 Northwest River Forecast Center

Monthly Precipitation
March 2017



Creation Time: Saturday, Apr 1, 2017 Northwest River Forecast Center

Temperature Departure
March 2017



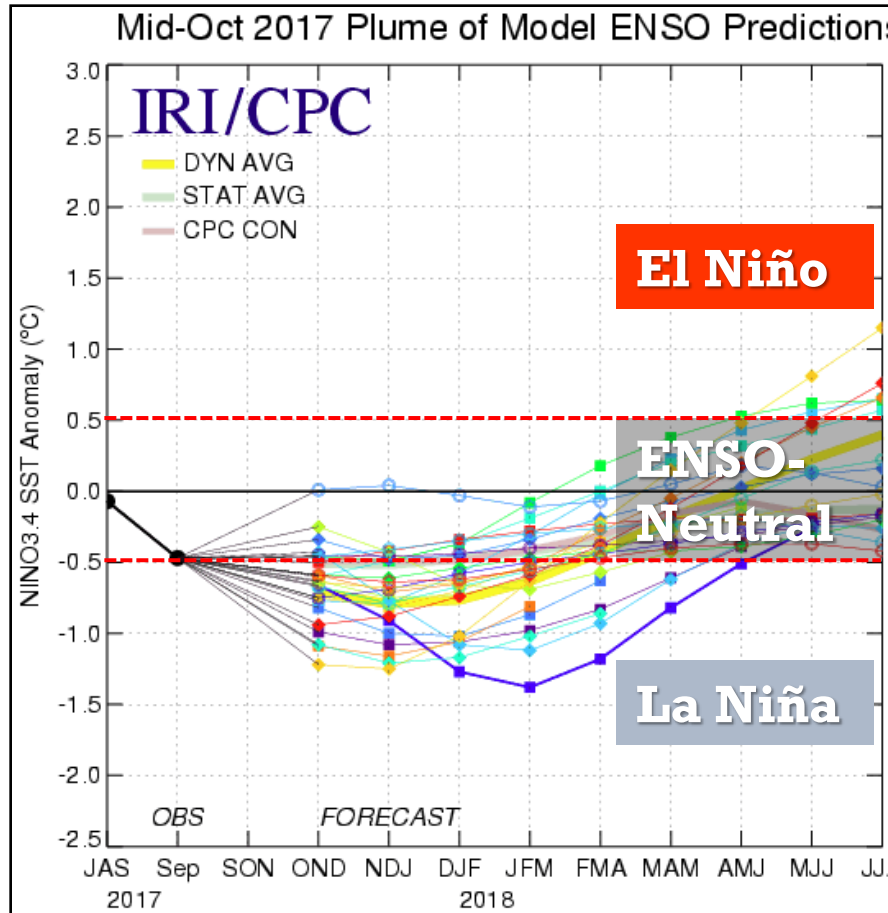
Creation Time: Saturday, Apr 1, 2017 Northwest River Forecast Center



What will happen this Winter?



ENSO Outlook

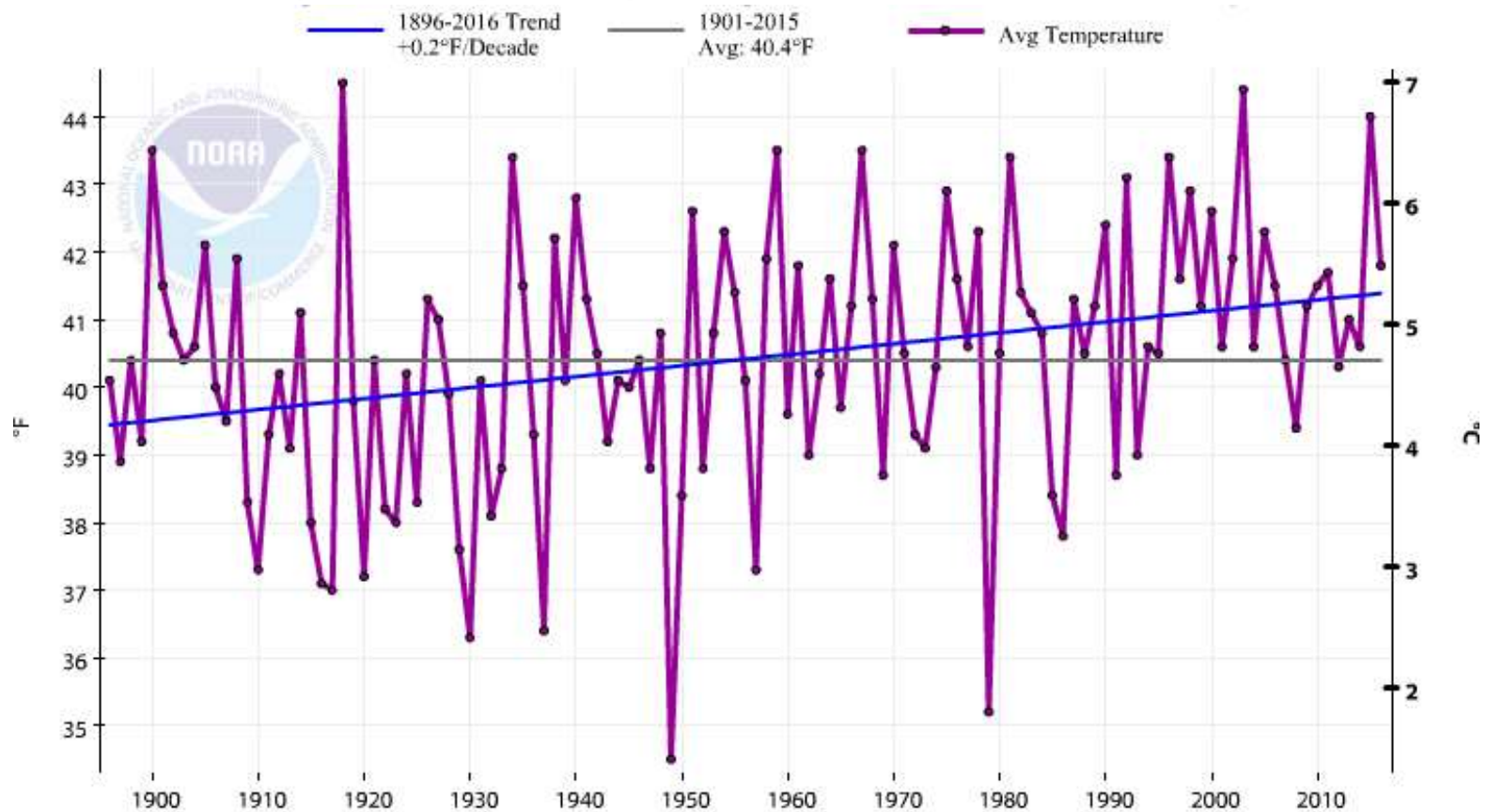


ENSO Projections:

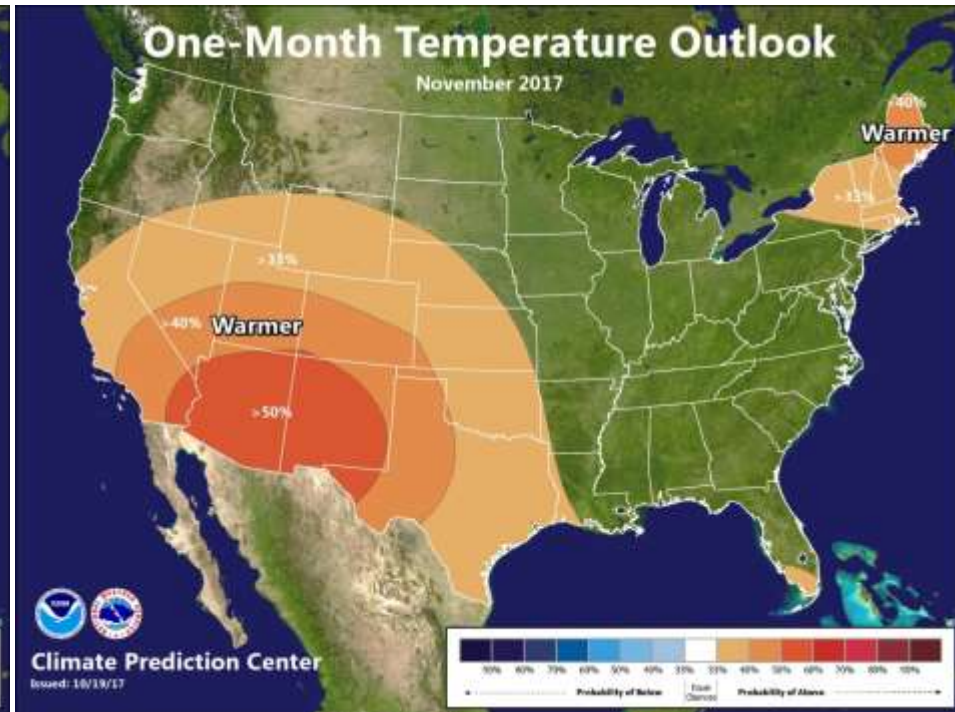
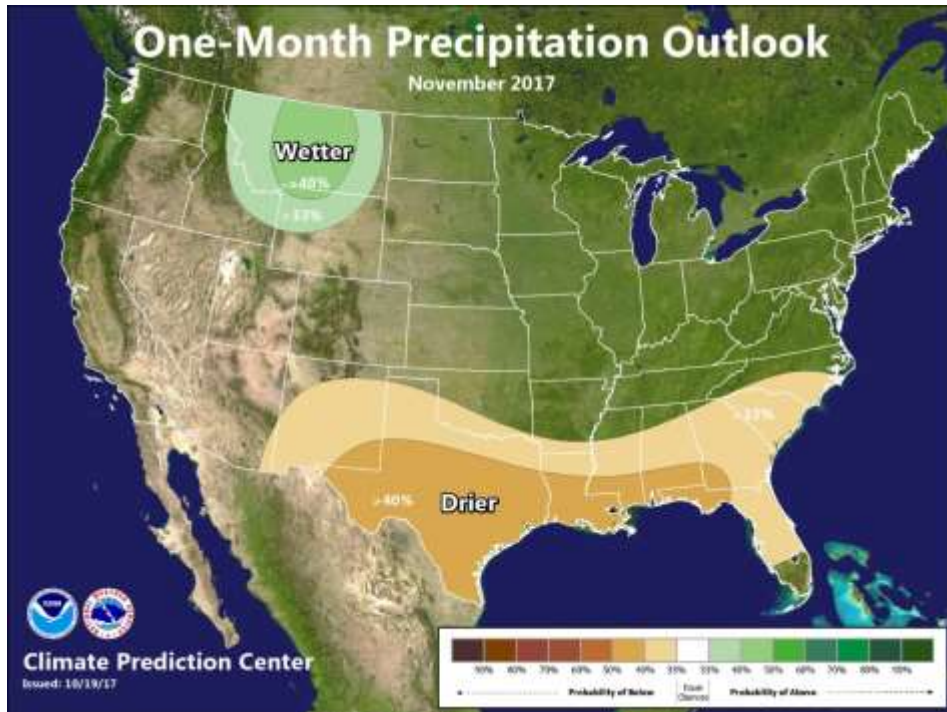
- Weak La Niña conditions favored again this winter
- ENSO-Neutral likely for the spring

Long-Term Temperature Trends

Willamette Valley: Average Temperatures for November-December-January



U.S. Seasonal Outlook November 2017



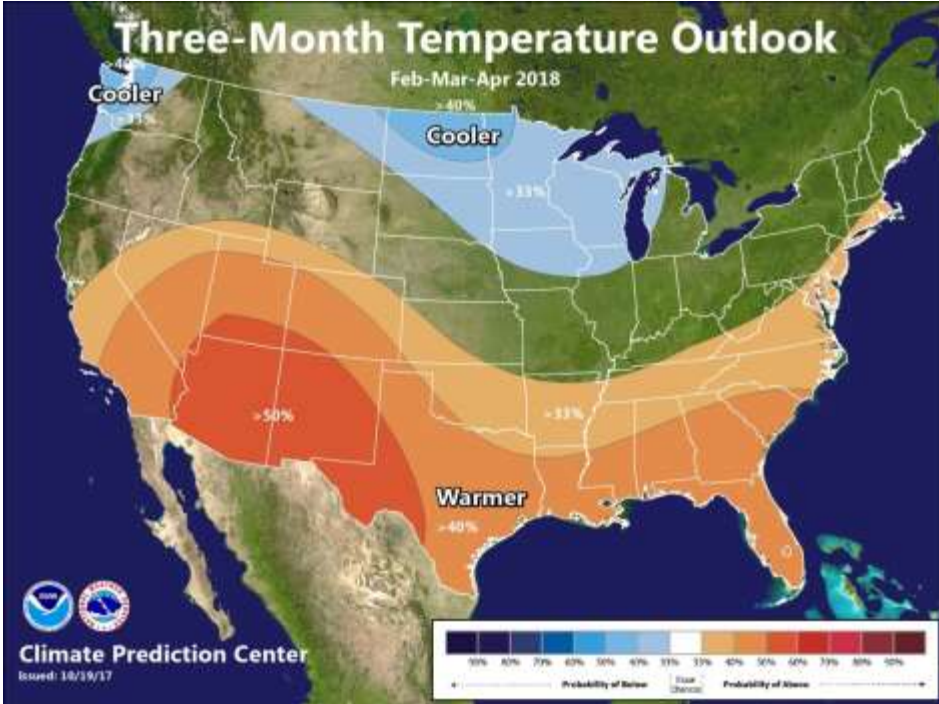
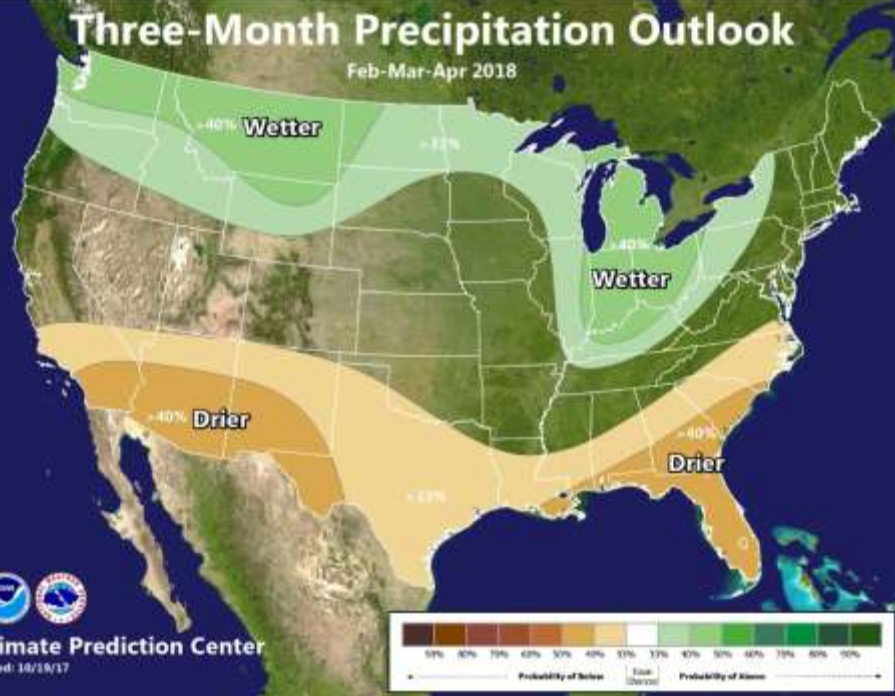
Climate Prediction Center
www.cpc.ncep.noaa.gov

U.S. Winter Outlook December 2017 - February 2018



Look for details and a video briefing at noaa.gov.

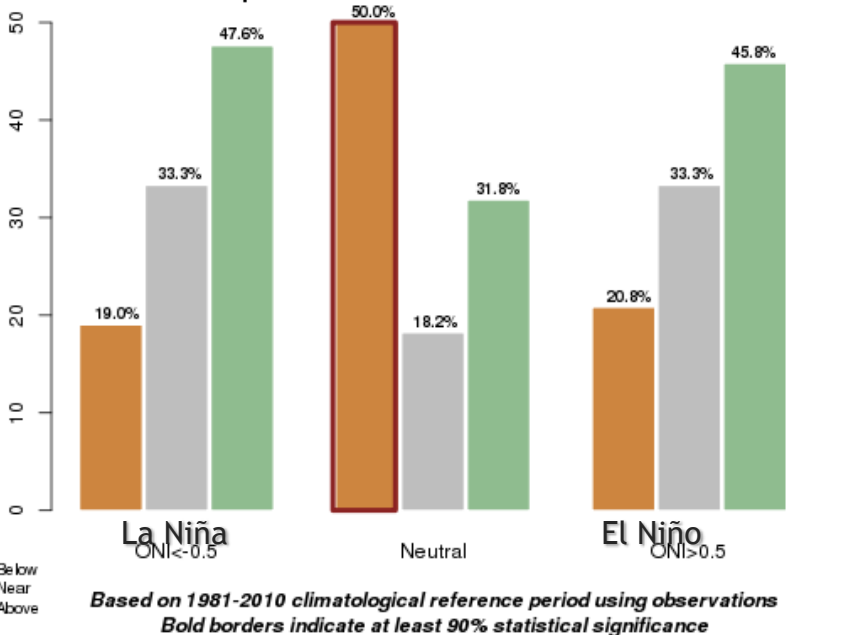
U.S. Seasonal Outlook February - April 2018



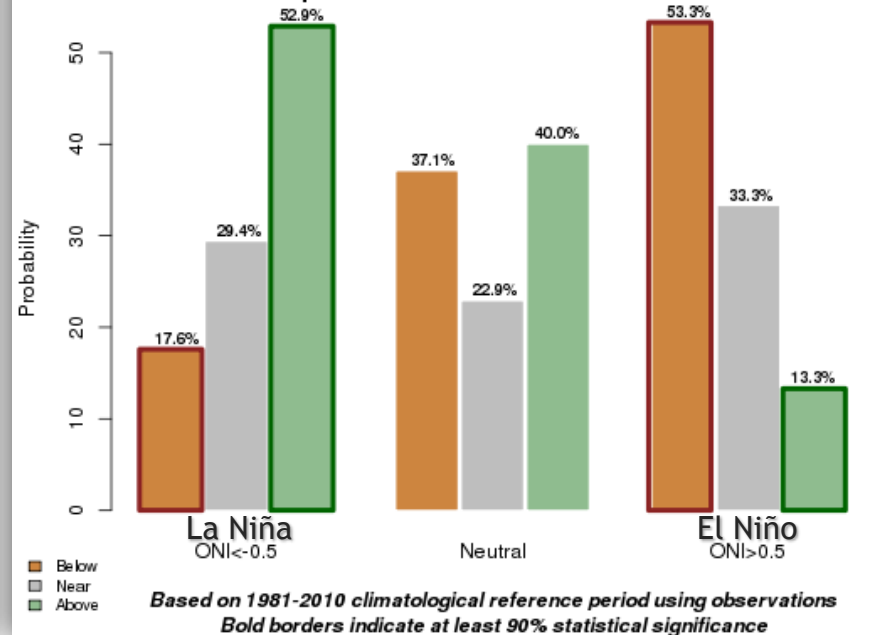
Climate Prediction Center
www.cpc.ncep.noaa.gov

Willamette Valley Precipitation

ONI Probability Distribution [1950-2016] of November-December-January Total Precipitation for NCEI Climate Division ID #OR02



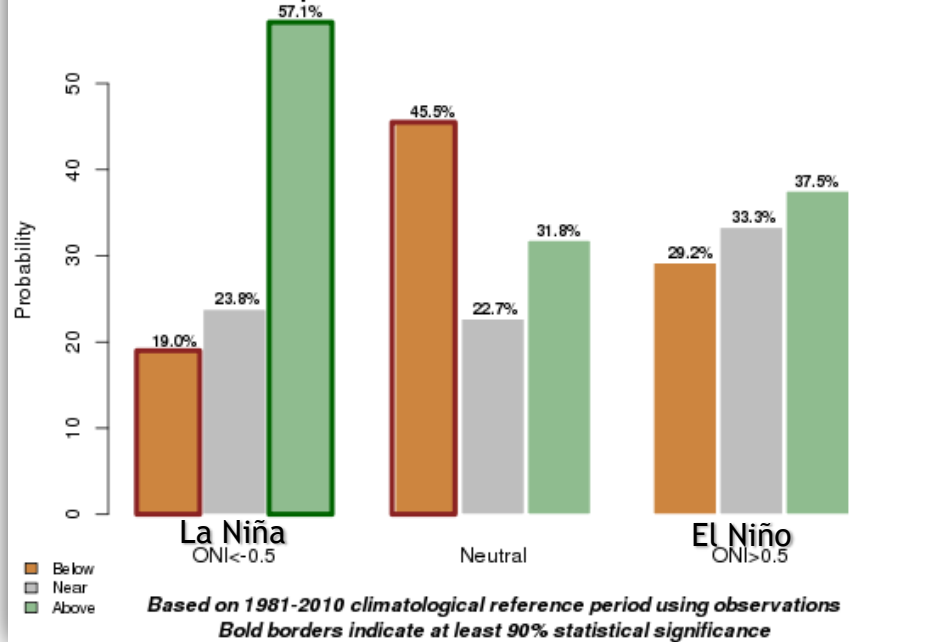
ONI Probability Distribution [1950-2016] of February-March-April Total Precipitation for NCEI Climate Division ID #OR02



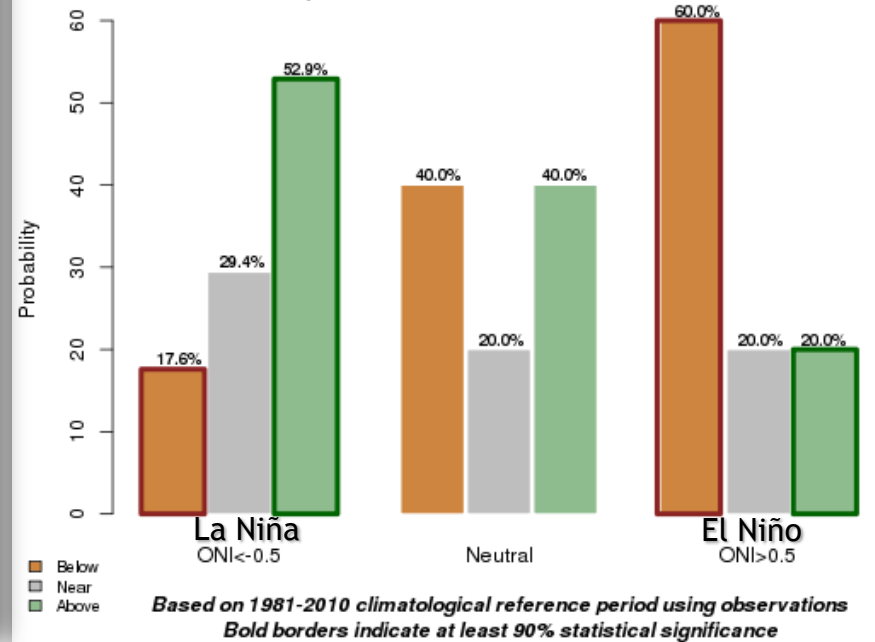
These plots show the range of seasonal precipitation for past years for the Willamette Valley during the different phases on ENSO.

North Oregon Cascades Precipitation

ONI Probability Distribution [1950-2016] of November-December-January Total Precipitation for NCEI Climate Division ID #OR04



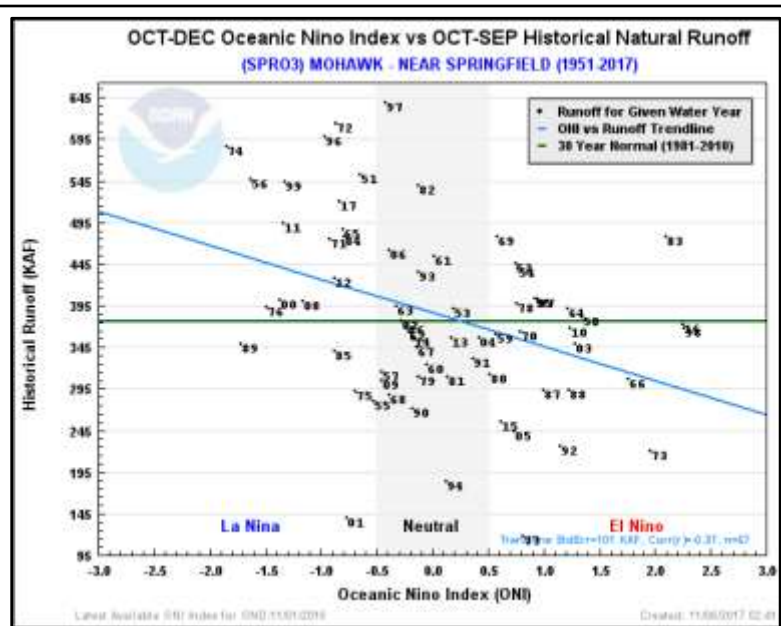
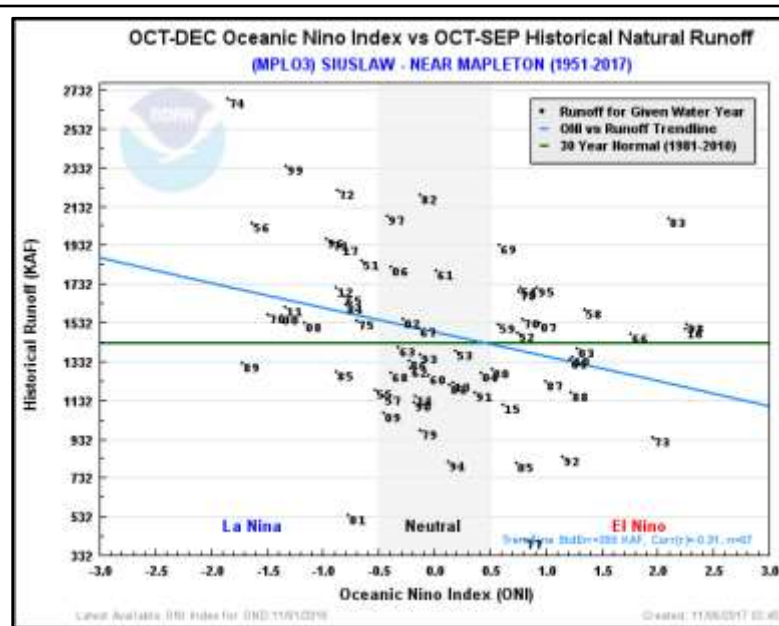
ONI Probability Distribution [1950-2016] of February-March-April Total Precipitation for NCEI Climate Division ID #OR04



These plots show the range of seasonal precipitation for past years for the Northern Oregon Cascades during the different phases on ENSO.

Rivers & ENSO

Dates of Past Floods & ENSO Value



These plots show the total runoff for each water year (1951-2017) plotted against the Oceanic Nino Index (e.g. El Niño / La Niña).

Date	ENSO
01-1974	-1.9
12-1955	-1.6
12-1998	-1.5
11-1999	-1.5
11-1998	-1.4
12-2007	-1.4
01-2011	-1.4
02-1999	-1.3
01-1971	-1.2
01-2006	-0.9
01-2012	-0.9
12-1964	-0.8
02-1996	-0.8
12-2005	-0.8
01-2009	-0.8
01-1965	-0.6
01-1972	-0.6
12-1996	-0.5
02-1986	-0.4
11-1996	-0.4
12-1980	-0.1
12-1981	-0.1
02-1961	0.0
02-1982	0.0
11-1960	0.1
01-1990	0.1
01-1970	0.6
12-1977	0.8
01-1988	0.8
11-2006	1.0

SUMMARY

- Weak LA NIÑA favored for winter (65% chance)
- Can expect this Winter to be (on average):
 - Temperature: Autumn above-average, Winter below-average
 - Precipitation: Slightly-enhanced probability of above-average
 - Snowpack: Likely a little above average
- Remember:
 - High-impact storms can occur October - March
 - Some snowfall likely in Willamette Valley this winter
 - Flooding: higher-than-average probability due to Weak La Niña

Resources to Stay Aware

NWS Portland
weather.gov/portland

NWS mobile page
mobile.weather.gov

NWS Northwest River Forecast Center
www.nwrfc.noaa.gov

Climate Prediction Center (long-range outlooks)
www.cpc.ncep.noaa.gov

iNWS alerts for EM & gov't officials
inws.ncep.noaa.gov



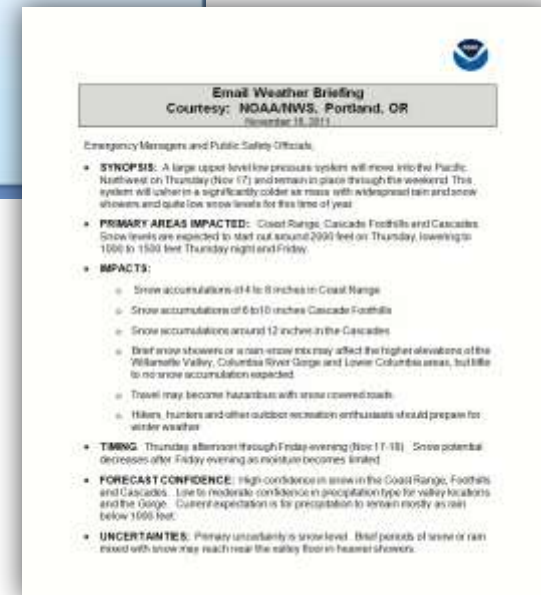
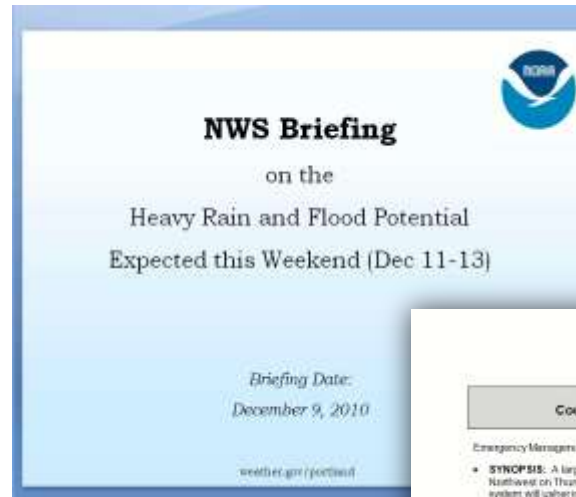
Weather-Ready Nation

National Oceanic and Atmospheric Administration

Weather Briefings

Event-Driven Weather Briefings

- For Key Decision Makers
- Conducted prior to and through 'high-impact' weather events
- Email briefings for lower impacts
- Conference call / webinar for higher impact storms



Are you on the list???

NWS Chat

- NWSChat – www.nwschat.weather.gov
 - Register as a partner
 - Instant Messaging With Forecasters on Duty
 - Efficient information exchange
 - All in Chat Room see the information
- nwschat.weather.gov/live



iNWS

- **NWS Watches & Warnings**

- **For Mobile Devices**

- **Tailor to your Needs**

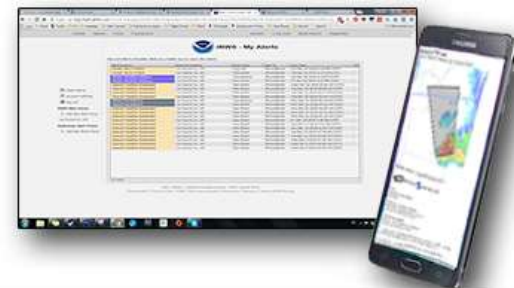
- *Area of concern*
- *Specific weather hazards*

- **Email and/or text message**

- **Free service**

iNWS MOBILE ALERTING

Receive customized text message and e-mail alerts for National Weather Service products that you care about.



Register / login at:
inws.ncep.noaa.gov

Social Media

- Public posts of local weather & conditions
- Interactive forum for photos, video, and info
- Situational Awareness

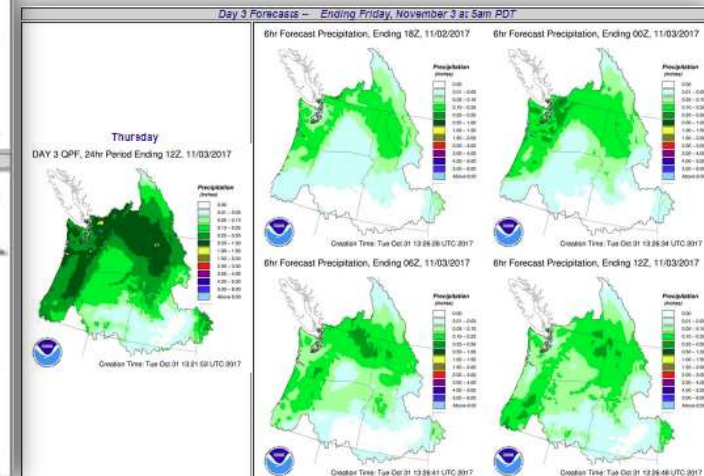
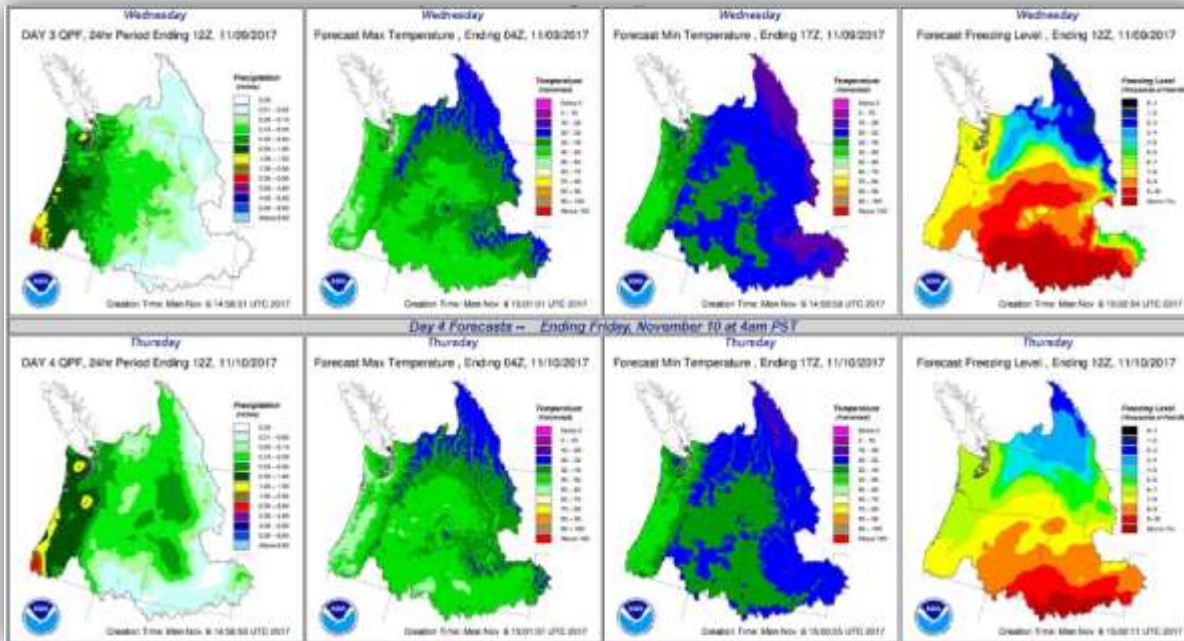


10-Day Outlook Northwest River Forecast Center

www.nwrfc.noaa.gov >

“Weather Forecasts” drop-down > 10 Day Temp & Precip

*Typically updated
once daily by 8 am*



No Matter What, Be “Weather Ready”

