

# R2019-04-02: Approving the Execution of an Interlocal Cooperation Agreement with Salt Lake County to Perform a Transit Alternative Analysis in the Point of the Mountain Area



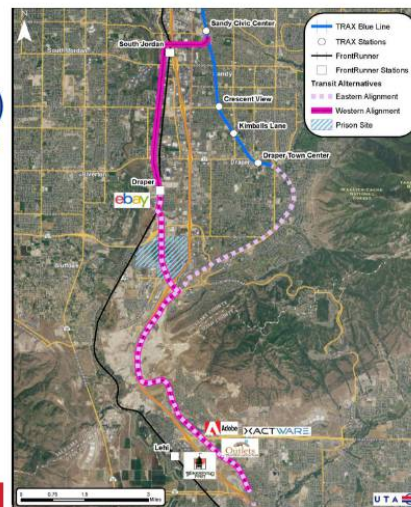
## Point of the Mountain Transit Alternatives Analysis

### Alternatives Analysis: Cost Sharing

#### Funding Partners:

- Salt Lake County (\$400K)
  - Draper, Sandy, South Jordan
- UDOT (\$50K)
- UTA (\$50K)
- WFRC (\$25K)
- MAG (\$25K)

*\$250K – looking for  
funding partners*



## Transportation Agencies Analysis

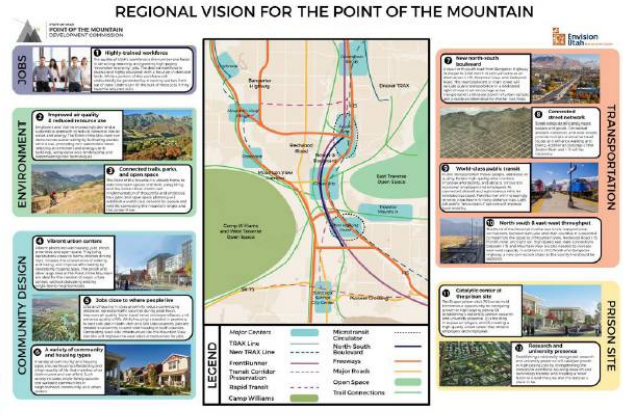
### Alternatives Analysis

As a result of the transportation analysis, UTA, UDOT, and MPOs decided to complete an alternatives analysis to study a transit connection between Sandy City, TRAX Blue Line, Frontrunner Draper Station, Utah State Prison Site, and Lehi City.



2018 Point of the Mountain Vision Study identified several critical transportation improvement projects.

UDOT, MAG, WFRC, and UTA completed a transportation analysis for several projects in PoM's preferred scenario.



**Procurement**

- The procurement contract will be phased to account for the \$250K shortfall.
- The project includes six tasks.
  - The first four tasks can be completed with the available \$550K.
  - Completion of tasks 5 and 6 requires an additional \$250K.
- Procurement of the contract will state that work on tasks 5 and 6 will not be authorized unless the \$250K is obtained.

