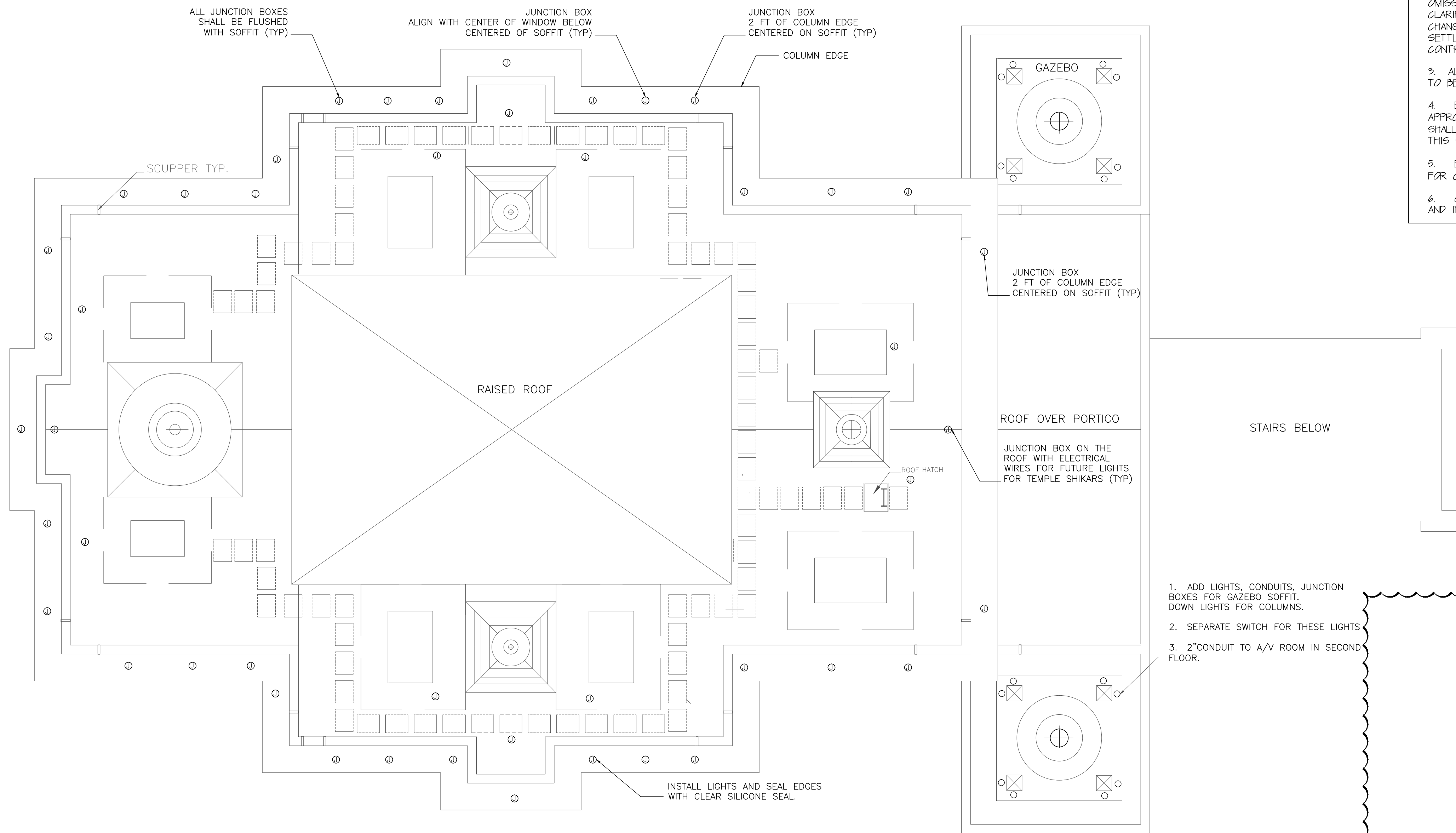


PROPOSED LIGHTS IN THE SOFFIT:
 SMC9L26W2100L30KWH
 MICRO LED CTC 9" (9.5" OD) WHITE, 26W 1700 LUMENS, 3000K,
 120V, WITH 26W DIMMABLE DRIVER, SURFACE MOUNT,
 9.5"OD X 1.4"H

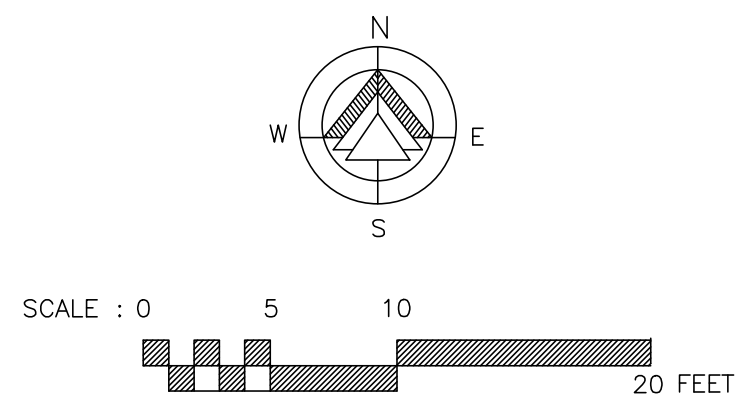


GENERAL NOTES:

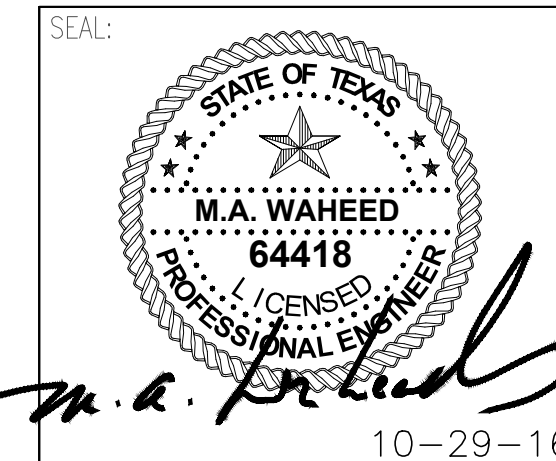
1. COMMENCEMENT OF WORK BY ANY CONTRACTOR OR SUBCONTRACTOR SHALL BE CONSIDERED EVIDENCE THAT HE HAS INSPECTED AND ACCEPTED ALL CONDITIONS INVOLVED IN HIS WORK AND FINDS THEM SATISFACTORY.
2. PRIOR TO THE COMMENCEMENT OF ANY WORK THE CONTRACTOR SHALL ANALYZE THE JOBSITE CONDITIONS, ALL DIMENSIONS, SETBACKS, PROPERTY LIMITS, UTILITY CONDITIONS. IF THE CONTRACTOR OBSERVES ANY ERRORS OR OMISSIONS IN THE CONSTRUCTION DOCUMENTS HE SHALL PROMPTLY NOTIFY THE PROJECT SUPERINTENDENT FOR CLARIFICATION. IF SUCH WORK PROCEEDS WITHOUT CLARIFICATION IT IS AT THE RISK OF THE CONTRACTOR. ANY CHANGES MADE BY CONTRACTOR PRIOR TO ARCHITECT'S CLARIFICATION SHALL BE AT THE CONTRACTOR'S RISK. THE SETTLEMENT OF ANY COMPLICATIONS OR DISPUTES ARISING FROM THIS SHALL BE AT THE EXPENSE OF THE CONTRACTOR.
3. ALL DISCIPLINES ARE TO REFER BACK TO ARCHITECTURAL DRAWINGS FOR DIMENSIONS. NO MEASUREMENTS ARE TO BE SCALED FROM THE DRAWINGS.
4. ELECTRICAL CONTRACTOR SHALL SUBMIT LIGHT FIXTURE SUBMITTALS TO OWNER AND ARCHITECT FOR APPROVAL BEFORE INSTALLATION. ANY INSTALLATION BY CONTRACTOR PRIOR TO ARCHITECT'S AND OWNER APPROVAL SHALL BE AT THE CONTRACTOR'S RISK. THE SETTLEMENT OF ANY COMPLICATIONS OR DISPUTES ARISING FROM THIS SHALL BE AT THE EXPENSE OF THE CONTRACTOR.
5. ELECTRICAL CONTRACTOR SHALL INSTALL 2" CONDUITS TO ELECTRICAL SERVICE PANEL AND ALSO 2" CONDUIT FOR CONTROL INTO A/V COSET IN SECOND FLOOR.
6. CORNICE LIGHTING IS OWNERS OPTION, VERIFY WITH OWNER IF THEY WANT IT INSTALLED BEFORE BIDDING AND INSTALLATION.

1. ADD LIGHTS, CONDUITS, JUNCTION BOXES FOR GAZEBO SOFFIT, DOWN LIGHTS FOR COLUMNS.
2. SEPARATE SWITCH FOR THESE LIGHTS
3. 2" CONDUIT TO A/V ROOM IN SECOND FLOOR.

ROOF, GROUND AND COVE LIGHTING PLAN 1
 SCALE : 1/8" = 1' - 0"



LIGHTING FIXTURE SCHEDULE							
		CATALOG #	LAMPS	VOLT	WATTS	CCT	DESCRIPTION
	TEXAS FLUORESCENTS	FPFL-22-LED-40-DMV-WH-50	40W LED	120	40	5000K	2' X 2' EDGELIT FLAT PANEL LIGHT
	PORTFOLIO	LD8A-30-1-DMX-ER8A-30-8-30-BLWO-LI-WF	42W LED	120	42	4,000K	8" WIDE LED RECESSED DOWNLIGHT, 1 - 100% DIMMING
	COOPER LIGHTING	ENV-B02-LED-E1-BL2-BK-ULG-PC	47.0W LED	120	47.0	4,000K	WALL MOUNTED UP/DOWN LIGHT (SUITABLE FOR WET LOCATION)
	COOPER LIGHTING	ENV-E02-LED-E1-BL2-BK-BBB-ULG-PC	47.0W LED	120	47.0	4,000K	WALL MOUNTED UP/DOWN LIGHT (EMERGENCY BATTERY BACKUP)
	BRUCK LIGHTING	138022-BZ-3-F	2.6W LED	120	2.6	3,200K	STEP2 ENERGY EFFICIENT OUTDOOR STEP LIGHT
	PHILIPS	COLOR KINETICS # 523-000002-07	20.5W LED	120	20.5	5000K	4' LED PERFORMANCE COVE LUMINARIE, ADJUSTABLE, PROGRAMMABLE CCT, 2ND LEVEL INTERIOR COVE
	PHILIPS	COLOR KINETICS # 523-000002-03	20.5W LED	120	20.5	5000K	12" LED PERFORMANCE COVE LUMINARIE, ADJUSTABLE, PROGRAMMABLE CCT
	H.E. WILLIAMS	EXIT/EL-SF-G-CP-WHT-EM	5W LED	120	5		EXIT SIGN WITH GREEN LETTERS, PROVIDE WITH EMERGENCY BATTERY, SURFACE OR RECESSED PER CONDITIONS
	H.E. WILLIAMS	EMER/MR16/CP-WHITE	-----	120	--	--	PROVIDE WITH EMERGENCY BATTERY, CONNECT AHEAD OF LIGHT SWITCH/DIMMING LEG.



CONSULTANT:
WAHEED CONSULTING
 MECHANICAL-ELECTRICAL-PLUMBING SYSTEM DESIGNS
 Registration No. F-6336

rev 10-09-2016 LIGHTING UPDATE
 date 03-15-2014
 scale AS NOTED
 drawn by CADD-SPA

SHASHI D. PATEL AIA NCARB
 ARCHITECTS AND PLANNERS
 442 EAST END AVE. STE-B. PITTSBURGH PA 15221

ROOF, GROUND AND COVE LIGHTING PLAN

CONSTRUCTION DOCUMENT PHASE