

# Raptor<sup>TM</sup>

Raptor lifts are manufactured to high-quality standards for years of dependable service at a reasonable cost.

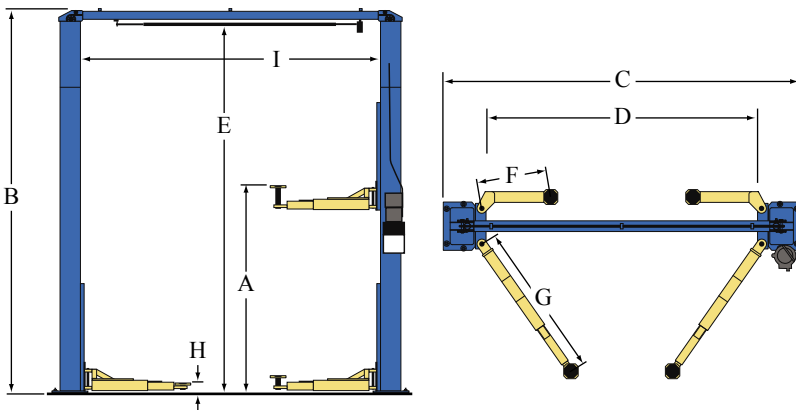
## Features:

- The Raptor RP10 is certified by ALI (Automotive Lift Institute) to meet American National Standard ANSI/ALI ALCTV-1998 and ANSI UL Standard 201
- Automatic arm restraint gears
- Large pad adapters with adapter extensions are standard. Includes four each of the following extensions: 1.5”(38mm), 3”(76mm) and 6”(152mm)
- Durable powder coat finish
- Overhead padded switch bar to avoid vehicle damage from being raised too high
- Can lift passenger cars, trucks, and vans up to 10,000 lbs.
- Position vehicle doors in front of columns or behind to avoid door damage
- Top mounted pull design hydraulic cylinder. The rod is protected behind the carriage to prevent damage
- Automatically re-setting safety locks in each column
- Two full-stroke cylinders with overhead cable for equalization
- Available in blue with yellow arms and adapters



Shown: Raptor RP10  
10,000 lbs. Capacity

## Specifications



Model Number	RP10
Lifting Capacity	10,000 lbs. (4536kg)
A Rise	77" (1956mm)
B Height Overall	143-1/8" (3635mm)
C Width Overall	133" (3378mm)
D Drive-Thru Clearance	99" (2515mm)
E Overhead Switch Height	136-1/4" (3461mm)
F Front Reach (Min/Max)	26-1/8"/44-1/2" (664/1130mm)
G Rear Reach (Min/Max)	38-7/8" / 58" (987/1473mm)
H Min Adapter Height	3 5/8" (92mm)
I Width Inside Columns	111-3/4" (2838mm)
Motor	2 HP
Voltage	1Ø 60Hz 220v
Ceiling Height Required	144-1/8" (3661mm)
Max Load Per Arm	2,500 lbs. (1134kg)
Min. Bay Size	12' x 24' (3658 x 7315mm)

Raptor Lift  
#4 Clifford Commons  
Unity, ME 04988-0390

P: 877.972.7867  
www.raptorlift.com  
Sales@raptorlift.com

Brochure# Raptor\_2006.11\_EN  
©2006 Raptor Lift, All Rights Reserved.