

Iowa River Valley

Early Childhood Area



"Beginning at birth, every child in Hardin and Marshall County will be physically, mentally, socially and spiritually healthy."

COMMUNITY PLAN July 2015- June 2018

Carrie Kube, ECI Director
iarivervalleyeca@gmail.com
641-648-6575

Hardin County Office
524 Lawler,
Iowa Falls, IA 50126

Marshall County Office
11 N 1st Ave, PO Box 1542,
Marshalltown, IA 50158

Betsy Macke, Chair
m.macke@mchsi.com

Plan Approved: September 9, 2014

TABLE OF CONTENTS

Section I: General Information	Page 3-13
A Word From Our Board Chair - 3	
Our Purpose, Vision, Mission, and Eligibility - 4	
Use of the Community Plan - 5	
Early Childhood Iowa State Priorities – 6	
Board Membership - 6	
Geographic Profile – 7-8	
Demographic Profile – 8-9	
Data Points of Interest – 9-11	
Meeting the Needs of Diverse Populations – 12	
Employment – 12-13	
Section II: Community Needs Assessment	Page 8-28
Development of the ECI Area’s Community Needs Assessment – 14-20	
Service Provider Needs Assessment – 20-21	
Parent Summit – 21	
Research From Outside Sources – 22-24	
Partnering With Another Agency - 25	
Analysis of the ECI Area Data Collected – 26-28	
Section III: Priorities Identified	Page 29-40
Priorities of the ECI Area Board and Analysis – 29-30	
Community-Wide Indicators of the ECI Area Board and Analysis – 30-37	
Strategies of the ECI Area Board – 38	
Measuring Performance of Our Programs – 39-40	
Progress Within Our Programs - 40	
Process for Awarding Funds - 40	
Section IV: Fiscal Assessment	Page 41-46
Section V: Community Collaboration	Page 47 -53
Collaborative and Networking Opportunities – 47	
Facilitation – 47-48	
Participation – 48-49	
Events – 49-50	
Additional Supportive Services – 50-51	
Ensuring Health and Safety – 51-53	
Additional Community Organization & Business Partners - 53	
Section VI: Review and Evaluation	Page 53-56
Evaluation of the Community Plan - 53	
Evaluation of Funded Programs – 53-54	
Evaluation of the Board – 54	
Future Plans – 54-55	
Resource Directories - 55	
References and Resources - 56	
Attachment A: Acronyms Relating to Early Childhood in Iowa	
Attachment B: Program Performance Measure Trend Data	

A Word From Our Board Chair

When Early Childhood Iowa (formerly Empowerment) was first formed, it was on the basis of giving local volunteers the power to impact the lives of children and families in their communities. Its primary goal, was and continues to be ***“Ensure every child beginning at birth, will be healthy and successful.”***

The Hardin and Marshall County Early Childhood Iowa Boards independently served their communities for over thirteen years. After a merger in 2012, the Iowa River Early Childhood Area Board was formed to build a larger and more comprehensive system of serving children age prenatal through five.

Our volunteer board makes a significant impact on the lives of families. Through our grant awards to quality programs, we ensure young children are and will continue to be healthy physically, mentally, socially and spiritually. We work together because we have a *strong* commitment to our communities.

The Iowa River Valley Early Childhood Area Board is active in providing preschool tuition scholarships to low income children, improving child care environments, increasing quality child care capacity, preschool transportation services, and family support and parent education services...and that is just to name a few! We also strive to promote quality practices in our programs, utilize sound fiscal practices, and have a presence in our communities through outreach and collaborations.

In the pages that follow, we will lay out our plan for serving families in Hardin and Marshall County in an effective and efficient manner.

Best Regards,

Betsy Macke
Iowa River Valley Early Childhood Area Board

Our Purpose...

The purpose of the Iowa River Valley Early Childhood Area Board is to empower and enable local citizens to lead collaborative efforts involving education, health, and human service programs on behalf of the children, families, and other citizens residing in Marshall and Hardin Counties. The goal of the Iowa River Valley Early Childhood Area is to have its activities improve the quality of life for families with young children.



Our Vision...

Beginning at birth, every child in Hardin and Marshall County will be physically, mentally, socially and spiritually healthy.



Our Mission...

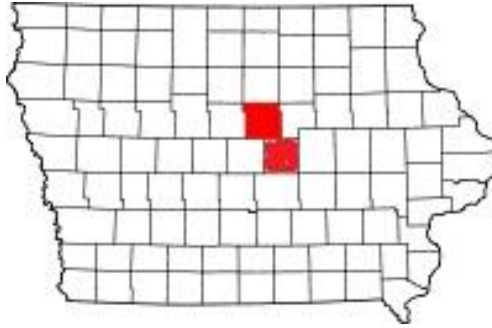
To improve the well-being of children from prenatal through age five. Iowa River Valley Early Childhood Area efforts will be devoted to providing leadership for collaborative activities promoting health, growth, success and safety for children.



Eligibility

All children age prenatal through five, residing in Hardin and Marshall County will be eligible for services through qualified and approved programs providing services on behalf of the Iowa River Valley Early Childhood Area Board. Programs must adhere to all requirements and standards set forth by the board, and the State Early Childhood Iowa Board. Every effort will be made to contact other ECIA Boards in surrounding counties to ensure children are served when crossing county boundaries.





Use of the Community Plan

This community plan was developed by the Iowa River Valley Early Childhood Area Board in support of residents prenatal through five, and their families who live in Hardin or Marshall County, Iowa.

A community plan is a document that is required by Iowa law to be completed by local Early Childhood Iowa Areas. This community plan reflects state and local goals that affect the well-being of Hardin and Marshall County's youngest citizens. The purpose of the plan is to help guide our Early Childhood Iowa Area in its endeavor to reach results, generate support for community services and ensure children and families succeed. The plan is to serve as "guide" or a "road map" for the Early Childhood Iowa Area community partners in their decision making, planning, and help set priorities for service. In addition, the plan identifies community assets, common needs, and gaps in services that help steer the Early Childhood Iowa Area. The plan can also be used as a guide for grant writing and funding decisions, and in the distribution of Iowa River Valley Early Childhood Area Funds.

By the listed priorities and goals that have been determined for this area, funding allocations can be made to best meet the needs described herein. We want to incorporate quality practices and set goals for achievement that create forward progress in the areas of early care and education, healthy children, and safe communities.

It is the hope and desire of the Iowa River Valley Early Childhood Area Board that, during the next three years, July 1, 2015 through June 30, 2018, this community plan will serve as a dynamic document that is reviewed and updated regularly to ensure it reflects the current assets, needs and priorities of the communities in which it serves.

This plan accessible in the following ways:

- ◆ Contact the Early Childhood Iowa Area Director at 641.648.6575
- ◆ Email iarivervalleyeca@gmail.com
- ◆ Visit our website at <http://iowarivervalleyeca.com>
- ◆ Request a copy at our office located at 524 Lawler St., Iowa Falls, IA 50126

The Iowa River Valley Early Childhood Area Board has published this three-year Community Plan as a part of its Levels of Excellence process. It is intended to provide guidance and direction to the Board members and staff, collaborative agencies, service providers, and the recipients of services in Hardin and Marshall County, in alignment with the Early Childhood Iowa State Board identified priorities.

The Early Childhood Iowa State Board has identified the following five priorities:

Children Ready to Succeed in School

Increase access to affordable quality early learning environments for all children. Increase the capacity of schools to be ready to meet the educational needs of all children.

Secure and Nurturing Families

Increase positive relationships between child and parents. Increase effective opportunities to learn about child development and parenting skills.

Healthy Children

Increase access to and utilization of social, emotional, developmental and mental health services. Increase access to and utilization of preventive health care services.

Secure and Nurturing Early Care and Education Environments

Increase the number of quality early care and education environments for all children. Increase parent and community demand for quality in early care and education environments.

Safe and Supportive Communities

Increase the safety of young children and families in their communities. Increase community investment in the early care, health, and education system.

Information regarding the Early Childhood Iowa initiative on following website links may be helpful:

- ◆ About the initiative - http://earlychildhoodiowa.org/ECI_initiative/index.html
- ◆ Iowa Board - http://earlychildhoodiowa.org/iowa_board/index.html
- ◆ System Framework - http://earlychildhoodiowa.org/files/ECI_SITE_FILES/ECIframeworkMay09.pdf
- ◆ Parent Information - <http://earlychildhoodiowa.org/parents/index.html>
- ◆ Annual Report - http://earlychildhoodiowa.org/EC_resources/annual_reports/index.html
- ◆ Tool Kit Tools - http://earlychildhoodiowa.org/local_system/Tools/tool_kit_tools_new.html

Iowa River Valley Early Childhood Area Board Membership

According to Iowa Code, Chapter 256I.7, 1(a) and Tool LL published by the State Early Childhood Iowa Board, the Iowa River Valley Early Childhood Area Board is comprised of elected officials or members of the public who are not employed by a provider of services to or for the area board. In addition, the membership of the board includes representation from early care, education, health, human services, business, and faith interests, and at least one parent, grandparent, or guardian of a child from zero through age five.

The Iowa River Valley Early Childhood Area Board has 9-15 volunteer members that live and/or work in Hardin or Marshall County. Community Members interested in applying to serve on the Board must submit an Application and Conflict of Interest Statement to the Director prior to a scheduled board meeting. A simple majority vote shall elect an application to membership.

To download an application for Membership, Conflict of Interest Form, or for a list of responsibilities, please contact our Early Childhood Iowa Area Director or visit http://iowarivervalleycaca.com/Board_Members.html

Geographic Profile for Hardin and Marshall Counties

IRVECA GEOGRAPHIC SNAPSHOT		
	<i>Hardin County</i>	<i>Marshall County</i>
County Seat	Eldora, IA http://www.co.hardin.ia.us/	Marshalltown, IA http://www.co.marshall.ia.us/
Location	Located in north central Iowa. Major highways running through Hardin County include the U.S. Hwy 20, Hwy 65, Hwy 57 and Hwy 175. <i>Both counties can be characterized as primarily rural, agricultural area comprised of small communities, consolidated and sharing school districts that serve multiple communities and traditional grain farming along with large-scale livestock production.</i>	Centrally located in the State of Iowa . Major highways running through Marshall County include U.S. Highway 30, Iowa Highway 14, Iowa Highway 96 and Iowa Highway 146 and Highway 330.
Square Miles	570 square miles	573 square miles
Persons per square mile, 2013	30.64	71.66
Adjacent Counties	Franklin, Butler, Grundy, Marshall, Story and Hamilton.	Hardin, Grundy, Tama, Jasper, and Story.
Towns	Ackley, Alden, Buckeye, Eldora, Hubbard, Iowa Falls, New Providence, Owasa, Radcliffe, Steamboat Rock, Union, and Whitten	Albion, Bangor, Clemons, Dunbar, Ferguson, Gilman, Green Mountain, Haverhill, LaMoille, Laurel, LeGrand, Liscomb, Marietta, Marshalltown, Melbourne, Minerva , Quarry, Rhodes, St Anthony, State Center, and Van Cleve
Schools	Ackley-Geneva-Wellsburg-Steamboat Rock (AGWSR), Eldora-New Providence, Beaman-Conrad-Liscomb – Union-Whitten (BCLUW) Hubbard-Radcliffe, and Iowa Falls-Alden	West Marshall, East Marshall, Green Mountain-Garwin and Marshalltown Community
Non-public schools	Timothy Christian School and Hardin County Home Educators	Marshalltown Area Catholic School and Clemons Lutheran School, Central Iowa Home Educators
DHS Office	By Appointment Only 1204 14th Ave, Eldora Income Maintenance provided by Marshall County - 641-752-6741 or 800-714-4588. Social Services provided by Hamilton County – 515-832-9555 or 800-944-1764.	Marshalltown Child Support Recovery 204 1/2 W State St Marshalltown: 641-753- Counties Served: Butler, Grundy, Hardin, Marshall, Poweshiek, and Tama
Extension Office	*Located in Iowa Falls http://www.extension.iastate.edu/hardin/	*Located in Marshalltown http://www.extension.iastate.edu/marshall/
Child Care Resource & Referral Region	Central Iowa Region 4 http://iowaccrr.org/who_we_are/region_4/	
Public Health	Green Belt Home Care http://www.greenbelthomecare.com/	Home Care Plus www.marshmed.com/hospital_services/home-care-plus/

Hospitals	Hansen Family Hospital http://www.hansenfamilyhospital.com <i>*New in 2014</i>	Marshalltown Medical & Surgical Center http://www.marshmed.com/
Attractions <i>*Not a comprehensive list.</i>	Hardin County Greenbelt, Pine Lake State Park, Apple Ridge Orchard, Rock N Row Adventures, Sac & Fox Overlook	The Big Treehouse, Fisher Community Center, Orpheum Theater, Appleberry Farm, Grimes Farm
Eligible for Services	Children prenatal through age five and their families living within the Hardin and Marshall County Area are eligible for services funded by the Iowa River Valley Early Childhood Area programs beginning July 1, 2012.	

IRVECA DEMOGRAPHIC PROFILE			
Source - Taken from quickfacts.census.gov, KIDS Count Data Center			
	Hardin	Marshall	Iowa
Population, 2013 estimate	17,441	40,994	3,090,416
Population, 2010 (April 1) estimates base	17,534	40,648	3,046,857
Population, percent change, April 1, 2010 to July 1, 2013	-0.5%	0.9%	1.4%
Population, 2010	17,534	40,648	3,046,355
Persons under Age 5 (2013 Estimate)	1,159	3,526	194,726
Persons under 5 years, percent, 2013	5.3%	7.0%	6.3%
Free & Reduced Lunch Rate (2012)	42.2%	57%	39.4%
Families Receiving Financial Food Assistance (2012)	13.4%	17.5%	13.4%
Single Parent Families (2010)	31.0%	33.6%	30.6
Percentage of females age 15-19 giving birth (2012)	3.0%	5.5%	2.4%
White alone, percent, 2013	96.7%	92.9%	92.5%
Black or African American alone, percent, 2013	1.4%	1.9%	3.3%
American Indian and Alaska Native alone, percent, 2013	0.3%	0.8%	0.5%
Asian alone, percent, 2013	0.5%	2.5%	2.0%
Native Hawaiian and Other Pacific Islander alone, percent, 2013	<0.1%	0.2%	0.1%
Two or More Races, percent, 2013	1.1%	1.7%	1.6%
Hispanic or Latino, percent, 2013	3.9%	19.4%	5.5%
White alone, not Hispanic or Latino, percent, 2013	93.1%	74.8%	87.6%
Living in same house 1 year & over, percent, 2008-2012	89.4%	86.0%	84.7%
Foreign born persons, percent, 2008-2012	2.4%	11.4%	4.3%
Language other than English spoken at home, pct age 5+, 2008-2012	4.0%	17.5%	7.1%
High school graduate or higher, percent of persons age 25+, 2008-2012	91.5%	84.5%	90.7%
Bachelor's degree or higher, percent of persons age 25+, 2008-2012	18.4%	18.5%	25.3%
Veterans, 2008-2012	1,578	3,877	233,698
Mean travel time to work (minutes), workers age 16+, 2008-2012	17.1	16.8	18.7
Housing units, 2013	8,163	16,698	1,349,617
Homeownership rate, 2008-2012	74.6%	74.3%	72.6%
Housing units in multi-unit structures, percent, 2008-2012	14.2%	16.7%	18.4%
Median value of owner-occupied housing units, 2008-2012	\$88,800	\$104,000	\$123,000
Households, 2008-2012	7,101	15,377	1,223,509
Persons per household, 2008-2012	2.34	2.56	2.41
Per capita money income in past 12 months (2012 dollars), 2008-2012	\$24,261	\$23,121	\$26,545
Median household income, 2008-2012	\$47,902	\$49,259	\$51,129

Persons below poverty level, percent, 2008-2012	9.6%	12.9%	12.2%
Business QuickFacts	Hardin	Marshall	Iowa
Private nonfarm establishments, 2012	555	822	80,649
Private nonfarm employment, 2012	5,490	14,478	1,293,694
Private nonfarm employment, percent change, 2011-2012	-0.9%	-3.7%	2.4%
Nonemployer establishments, 2012	1,329	1,984	203,701
Total number of firms, 2007	1,812	2,532	259,931
Manufacturers' shipments, 2007 (\$1000)	743,136	1,848,040	97,592,051
Merchant wholesaler sales, 2007 (\$1000)	1,191,033	298,112	41,068,338
Retail sales, 2007 (\$1000)	161,778	407,694	39,234,649
Retail sales per capita, 2007	\$9,242	\$10,434	\$13,172
Accommodation and food services sales, 2007 (\$1000)	11,447	40,400	4,737,719
Building permits, 2012	15	12	9,501
Persons per square mile, 2013	30.64	71.66	55.3

Source: United State Census Bureau

% of individuals receiving financial assistance for food during the year						
	2008	2009	2010	2011	2012	Change (Since 2008)
Hardin	5.4%	9.3%	10.2%	12.3%	13.4%	+8%
Marshall	8.2%	13.7%	14.9%	16.2%	17.5%	+9.3%

Source: Iowa Department of Human Services

% of Children Age 3-4 Attending Preschool					
Location	2000	2005 - 2009	2006 - 2010	2007 - 2011	Change
Hardin	46.9%	48.4%	43.2%	51.7%	+4.8%
Marshall	39.2%	29.7%	32.2%	41.4%	+2.2%

Source: Child and Family Policy Center

Children 0-4 Receiving Services Through Women, Infants & Children (WIC) Program					
Location	2008	2010	2011	2012	Change
Hardin	27.7%	28.4%	26.2%	25.1%	-2.6%
Marshall	49.8%	53.3%	50.9%	47.7%	-2.1%

Source: Iowa Department of Public Health

Single Parent Families				
Location	2000	2005-2009	2010	Change
Hardin	22.5%	30.3%	31.00%	+7.5%
Marshall	28.2%	29.5%	33.6%	+5.4%

Source: Child and Family Policy Center

Hardin County Child Abuse Rates							
Local Indicators	Data Source	Baseline Data	Trend			Goal/Timeline	Progress
Rate of child abuse & neglect (0-17)	DHS/PCA Iowa	Hardin County 2000=13.1/1,000 Iowa 2000=13.8/1,000	2001	12.5/1,000	17.4/1,000	Reduce to less than 9/1,000 child population the incidence of confirmed child abuse by a caretaker.	<ul style="list-style-type: none"> Hardin County had the 10th highest rate in 2013, up from 12th in 2012. Increased awareness and education will result in increased reporting and an increase in confirmations.
			2002	12.1/1,000	16.8/1,000		
			2003	14.8/1,000	20.5/1,000		
			2004	14.4/1,000	20.4/1,000		
			2005	19.8/1,000	20.9/1,000		
			2006	20.5/1,000	22.0/1,000		
			2007	19.8/1,000	20.4/1,000		
			2008	21.2/1,000	17.6/1,000		
			2009	27.8/1,000	19.9/1,000		
			2010	26.7/1,000	18/1,000		
			2011	23.4/1,000	17.6/1,000		
			2012	25.3/1,000	17.4/1,000		
			2013	28.4/1,000	17.3/1,000		
Rate of child abuse & neglect (0-5) as a % of all confirmed abused children	DHS/PCA Iowa	Hardin County 2001=39.7% Iowa 2001=43.8%	2002	48.3%	45.1%		<ul style="list-style-type: none"> Hardin County's average rate of confirmed child abuse (0-5) for 2010-2013 is 49.3% as compared to Iowa's average of 50.3% for the same period.
			2003	43.3%	46.6%		
			2004	48.2%	46.4%		
			2005	40.0%	49.1%		
			2006	44.3%	49.4%		
			2007	60.5%	50.6%		
			2008	46.1%	53.1%		
			2009	48.5%	51.5%		
			2010	51.5%	50.8%		
			2011	56.5%	50.6%		
			2012	53.0%	52.0%		
			2013	49.3%	50.3%		

Source: Iowa Department of Human Services; Prevent Child Abuse Iowa

Compiled by: Child Abuse Prevention Services

811 East Main Street

Marshalltown, IA 50158

641.752.1730

caps@capsonline.us

www.capsonline.us

Marshall County Child Abuse Rates							
Local Indicators	Data Source	Baseline Data	Trend			Goal/Timeline	Progress
Rate of child abuse & neglect (0-17)	DHS/PCA Iowa	Marshall County 2000=15.3/1,000 Iowa 2000=13.8/1,000	2001	23.9/1,000	17.4/1,000	Reduce to less than 9/1,000 child population the incidence of confirmed child abuse by a caretaker.	<ul style="list-style-type: none"> Marshall County had the 24th highest rate in 2013, down from 17th in 2012. Increased awareness and education will result in increased reporting thus an increase in confirmations
			2002	19.7 /1,000	16.8/1,000		
			2003	26.8/ 1,000	20.5/1,000		
			2004	26.3 /1,000	20.4/1,000		
			2005	23.9/1,000	20.9/1,000		
			2006	25.9/1,000	22.0/1,000		
			2007	19.4/1,000	20.4/1,000		
			2008	28.1/1,000	17.6/1,000		
			2009	28.2/1,000	19.9/1,000		
			2010	27.6/1,000	18/1,000		
			2011	23.5/1,000	17.6/1,000		
			2012	21.5/1,000	17.4/1,000		
			2013	21.9/1,000	17.3/1,000		
Rate of child abuse & neglect (0-5) as a % of all confirmed abused children	DHS/PCA Iowa	Marshall County 2001=48.5% Iowa 2001=43.8%	2002	57.9%	45.1%		<ul style="list-style-type: none"> Marshall County's average rate of confirmed child abuse (0-5) for 2010-2013 is 52.6% as compared to Iowa's average of 50.3% for the same period.
			2003	48.7%	46.6%		
			2004	42.4%	46.4%		
			2005	56.5%	49.1%		
			2006	58.7%	49.4%		
			2007	52.0%	50.6%		
			2008	44.9%	53.1%		
			2009	47.3%	51.5%		
			2010	48.8%	50.8%		
			2011	57.7%	50.8%		
			2012	52.0%	50.6%		
			2013	52.6%	50.3%		

Source: Iowa Department of Human Services; Prevent Child Abuse Iowa

Compiled by: Child Abuse Prevention Services
811 East Main Street
Marshalltown, IA 50158
641.752.1730
caps@capsonline.us
www.capsonline.us Rev. 7-8-14

Meeting the Needs of Diverse Populations

The cultural climate in Hardin and Marshall County, and Iowa as well, is continually changing. Being aware of new ethnic backgrounds, languages, and differing lifestyles has been, and will continue to be a focus for the Iowa River Valley Early Childhood Area Board. We rely on community partners and services providers to assist in meeting the needs of diverse populations. Currently, this is accomplished by our service providers who offer the following:

- ◆ Having bilingual staffs that help interpret or translate with parents in home visiting, WIC, Head Start services, care coordination, Maternal Health and a variety of other services.
- ◆ Working with the needs of all differing populations.
- ◆ Serve anyone regardless of any circumstance. One agency stated, "We have grants for those where funding is an issue, we have trained staff for sensitivity issues, and all clients are admitted through the management team so as to insure fair and equitable treatment."
- ◆ Reach Out and Read supplies books (English, Bi-Lingual, and Spanish) and information to all eligible families in Marshall and Hardin County.
- ◆ A bi-lingual Latino Parent Provider Specialist provides translation and interpretation to support CCR&R service delivery to Spanish speaking child care home providers.
- ◆ A partnership with Lutheran Services of Iowa Refugee services.
- ◆ Staffs are trained in cultural competency.
- ◆ Incorporating different cultures into lessons.

In recent years, Marshall County has become increasingly culturally diverse in the populations that are served. This has caused our programs to re-evaluate their services and find ways to meet the needs of a changing demographic. In FY'14, our Board provided additional funding to support interpreters in Building Healthy Families ~ Family Support Program. Additionally, the program facilitated on-going conversations between residents and law enforcement to build a system of trust, create a safe community and develop an understanding of community laws.

As evidenced by the Marshalltown Community Schools, data demonstrates the need for the continued support and/or expansion of services to diverse populations:

- 56% Minority (Asian, Black, Native American Indian, Hispanic) vs. 44 % Majority (White)
- 34% of the District are English Language Learners (ELLs) – 86% of those are Hispanic, 11% Asian
- 82% of the enrolled Asian Population are English Language Learners – Primary language groups include Karen (55%), Burmese(29%) speaking some Karenni or Chin, and Other 16% include Indonesian, Lao, Marshallese, Marathi, Malay, Philippine, Tamil, Thai, Vietnamese, Gujarati, and Hindi. These are all refugees received over the last 4 years of school. A few students have trickled in over the past few years are represented by the following groups: French, Dinka, Nuer, Mende, and Sudanese.
- The Marshalltown School District 2012-2013 Kinder class have 61% Minority, and 39% majority, and 5% of those were born outside the United States.

Employment in Hardin and Marshall County

Iowa Workforce Development identifies 99 business in Hardin County, and 175 in Marshall County. Because they are both rural counties in nature and similar in land size, it is not uncommon for residents to travel outside their residence or across county lines for employment. With an average commute of 17 minutes, residents are primarily commuting to another town to/from their home residence.

With Eldora, Iowa Falls, Marshalltown, and State Center being the highest populated towns, it provides a great opportunity for jobs, recreation, and businesses.

Industrial/Agricultural - Large industrial or agricultural companies such as Lennox, Emerson-Fisher, Mechdyne, JBS, Cargill, Flint Hills, Integrated Ag Services, Pine Lake Processors, Iowa Limestone Company, Christiansen Farms, Summit Farms, Iowa Select Farms, Plastic Recycling, Metal Tech, Martin Marietta, IVESCO, AgVantage and Prestressed Concrete carry the highest number of employees and are a draw for new families moving into the area.

Medical - Marshall County is home to Marshalltown Medical and Surgical Center and Iowa Veteran's Home. Hardin County is supported by the new Hansen Family Hospital, with a new state-of-the-art facility. Both facilities will assist in promoting better health and excellent employment opportunities. Families also have access to multiple local health clinics in each county.

Education - Ellsworth Community College, Marshalltown Community College, Iowa Valley Continuing Education, Buena Vista University, and AEA 267 all provide employment for several communities.

Retail - Many large retail companies include Wal-Mart, ShopKo, Hy-Vee, Fareway, Theisen's, Dollar General, Restaurants, Campbell Supply, Kmart, JCPennys, Menards, Younkers, and more.

Media Outlets: Radio Stations heard in the Hardin County Area are: KIFG, KDAO KQCR, KLMJ, and KIXA. Radio Stations heard in Marshall County are: KCM-LP, KDAO, KFJB-KXIA, KCRM and KFJB Studio and KRTI. Newspapers in Hardin County include: Times Citizen, Ackley World Journal, Hardin County Index, and Signal Review. Newspapers in Marshall County include: Times-Republican, Marshall County Sun and Enterprise Record.

Outdoor Recreation: With 58 county parks in Hardin County (plus 2 privately owned) and 27 in Marshall County, the outdoors provides different types of activities for families to enjoy which include, but are not limited to: wildlife education, geocaching, canoeing, camping, hiking, tubing, biking, swimming, kayaking, fishing and more. Soon a biking trail will be extended from Marshall County through Hardin County, offering greater opportunities for families. For more information visit:

Hardin County Conservation - <http://hardincountyconservation.com/>

Marshall County Conservation - <http://www.co.marshall.ia.us/departments/conservation>

Other Points of Interest: In Hardin County, includes but is not limited to: Hardin County Farm Museum, CCC/POW Museum, Pla Mor Bowl, Hardin County Raceway, Grand Theater, Metropolitan Theater, Empress Boat, Pat Clark Art Collection, public libraries, aquatic center, golf courses and more. In Marshall County, includes but is not limited to: The Appleberry Farm, The Big Tree House, Orpheum Theater, Fisher Community Center Art Gallery, Grimes Farm & Conservation Center, public libraries, aquatic center, golf courses and more.

Iowa Workforce Development Centers faced a huge reduction in the number of offices in 2011. The Marshall County office, located in Marshalltown, is still in operation. The Hardin County office was forced to close, but a virtual access point, with limited hours, was established at Ellsworth Community College in Iowa Falls. This continues to be a struggle for those searching for employment. In some cases, residents are still unaware that the office has closed.

Unemployment continues to be a concern for citizens, board members and community partners. Results indicate that unemployment has declined since 2011, but still higher than it was in 2008.

Unemployment Rate						
Location	2008	2009	2010	2011	2012	% Change
Hardin	4.2%	6.1% (+1.9%)	6.7% (+.6%)	6.2% (-.5%)	5.5% (-.7%)	+1.3%
Marshall	5.1%	6.9% (+1.8%)	6.8% (-.1%)	6.9% (+.1%)	6.7% (-.2%)	+1.6%

Educating business professionals on the return of investment in the early years continues to be a priority for the Iowa River Valley Early Childhood Area Board, and will be for years to come. We have created partnerships with business and non-profit service agencies for community projects that benefit children, families and businesses

Section II: Community Needs Assessment

Development of the IRVECA Community Needs Assessment

In order to gather the opinion of those we serve, the Iowa River Valley Early Childhood Area Board Quality Evaluation Committee drafted a Community Needs Assessment for disbursement. The primary goal was to seek input in each of the five state-identified priority areas from the community to determine aligning priorities for the Iowa River Valley Early Childhood Area Board.

The assessment was approved and distributed, in hard copy and electronic, by the Iowa River Valley Early Childhood Area Board throughout Hardin and Marshall County utilizing the following resources:

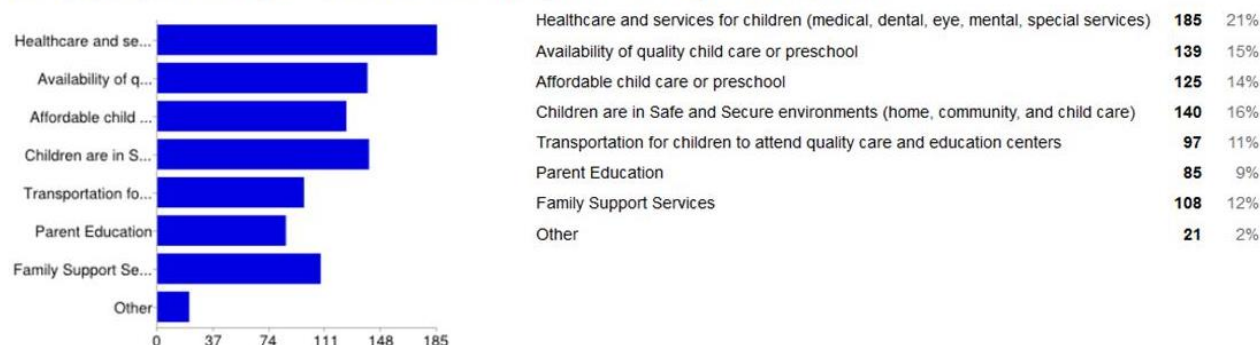
- ◆ Service agencies and programs
- ◆ Preschools and child care centers
- ◆ Focus groups and community planning meetings
- ◆ WIC Clinics
- ◆ County-wide events
- ◆ IRVECA Website
- ◆ Social media sites: Facebook and Twitter
- ◆ E-mail and newsletter distribution
- ◆ Newspapers

IRVECA Plan for Community Needs Assessments Disbursement

Method for Distribution	Source of Distribution	Begin Date	End Date (Goal)	# Distributed
Paper Copy of Community Needs Assessment	Preschools	February 1, 2014	April 1, 2014	655
	Family Support Clientele	February 1, 2014	April 1, 2014	95
	Head Start	February 1, 2014	April 1, 2014	195
	Child Care Centers	February 1, 2014	April 1, 2014	117
	WIC Clinics	February 1, 2014	April 1, 2014	100 (est.)
E-Mail Distribution	Contracted IRVECA Service Providers	February 1, 2014	April 1, 2014	18
	Community Partners – to share with families they serve	February 1, 2014	April 1, 2014	75+
Newspaper Announcement	All papers Hardin and Marshall County	February 1, 2014	March 1, 2014	5
Website	IRVECA Website	February 1, 2014	May 1, 2014	Live for 3 months
Constant Contact	(monthly)	February 1, 2014	May 1, 2014	3 Newsletters
Social Media	(weekly)	February 1, 2014	March 1, 2014	1/30/14
Healthy Families Fair	Community Fair	March 1, 2014	March 1, 2014	100
Family Fest	Community Fair	May 3, 2014	May 3, 2014	100

In partnership with Ellsworth Community College, students in a statistics course voluntarily compiled the results for the Iowa River Valley Early Childhood Area Board. A compilation of assessments from all sources listed above is as follows:

What do you feel are the 3 greatest needs for children 0-5 years old where you currently reside?



If your family had to ask for help, what would that be:



In the last 12 months, have you experienced any problems in transporting your child(ren) to and from school, before/after school activities, preschool or child care?



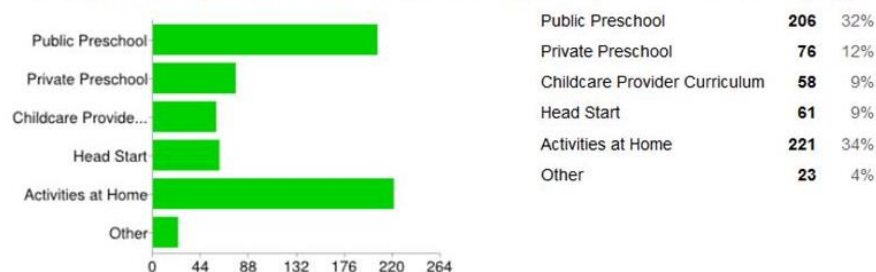
If you have children ages 3-5, have they or will they be attending preschool?



If you have children ages 3-5, and they are NOT attending preschool, please tell us WHY.

One is 4 is currently, the other 2/3 will not until 4 n/a 5 Years old in Kindergarten We had to take my child out of preschool in Alden because I live in Iowa Falls and do not have a car due to financial difficulties. So I could not transport her back and fourth. Homeschool Homeschooling Undecided Kindergarten Son is now in Kindergarten Transportation and lack of is the biggest challenge in for me and for the working parents of the children in my care. Prepare for kindergarten and provides care while working Awesome in home daycare provider

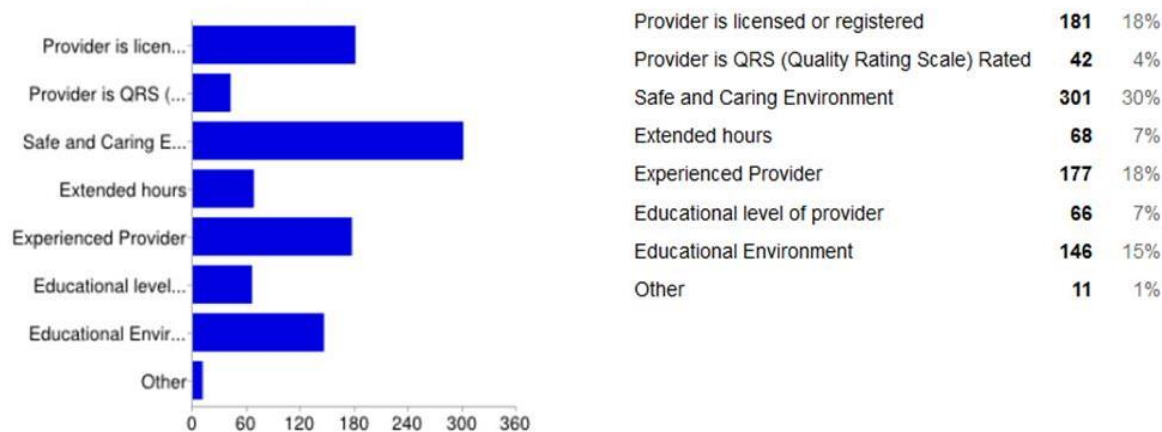
How do you ensure your children are ready for Kindergarten? (Please select all that apply.)



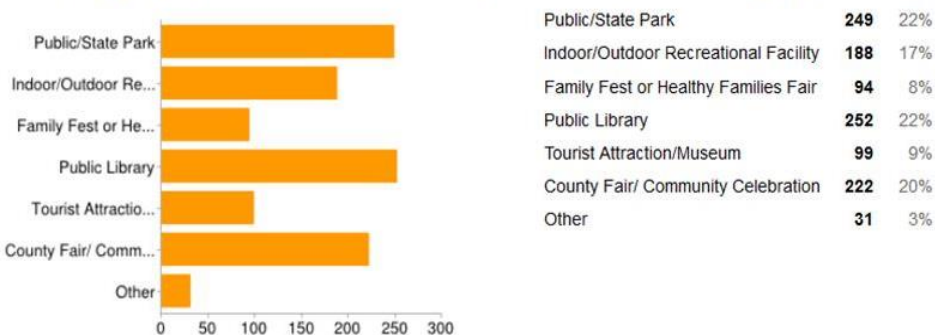
If you work outside the home, is your child being cared for by a: (Please select all that apply.)



Please check 3 things that you would consider most important when searching for child care?



In the past year, did you or a member of your family use/visit any of the following (in your county): (Please select all that apply.)



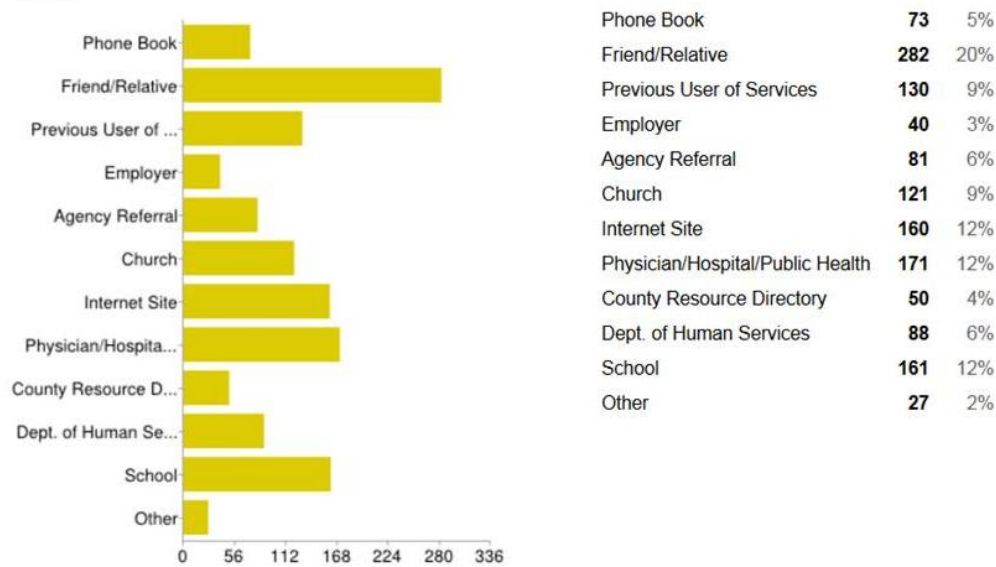
In the past year, were you able to meet your basic needs financially for items such as food, shelter, medical care, mental health services, immunizations, etc.?



Specific unmet needs were:

rent, car payment, electric Financaill shelter Food Assistance Mental health services 0 medical bills HawkI insurance provided rent, clothes Medical Needs difficult to buy healthy foods because they are more expensive medical care Medical and Food Not enough money until the end of the month Medical Care still owe shelter, gas All of the above transportation Bills, Food Providing food would love to work more

What sources would you use to obtain information about programs that provide services to children ages 0-5? (Please select all that apply.)



Which services do you NEED assistance with: (Please select all that apply.)



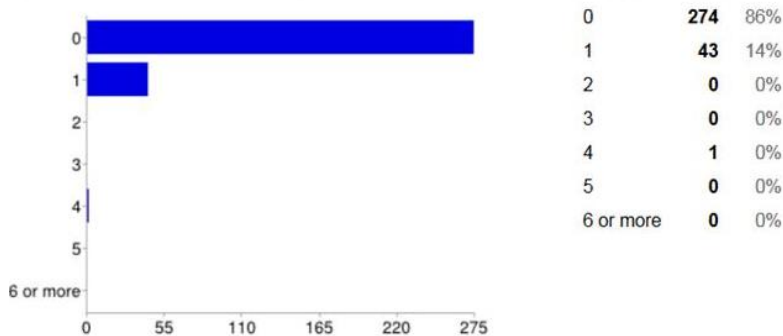
Have you used or are you currently using any of these services for children 0-5: (Please select all that apply.)



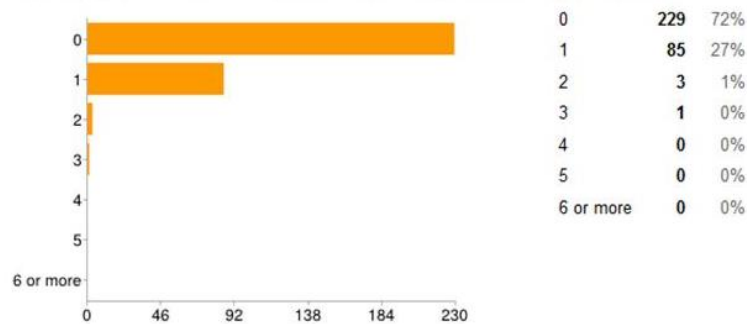
The town in which you currently reside:

Garwin Unknown Laurel Le Grand Melbourne Rhodes Alden Altoona Iowa falls State Center Union N/A Eldora Melbaune Ackley
 Buckeye Steamboat Rock melbourne Union/New Providence Tama Iowa Falls Williams Ferguson montour state center Marshall Newburg
 Marshalltown Ackley marshalltown none legrand Aplington Ferguoon Rural Rhodes Gilman Gladbrook Haverhill Iowa Falls New Providence
 LeGrand Iowa Falls Radcliffe State Center Wellsburg Marshalltown Albion live in country Hardin Rhodes/Melbaune gilman Hubbard

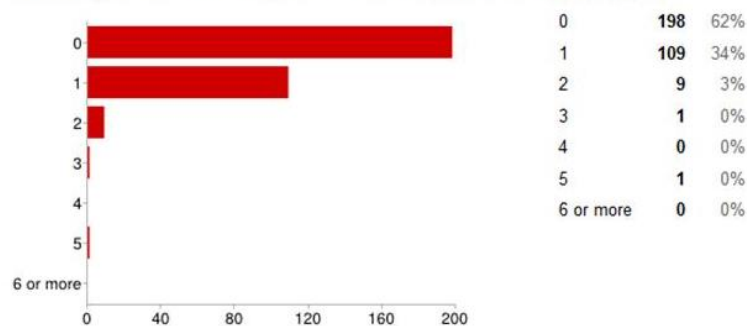
Age 0-1 [If you have children, how many fall within these age groups:]



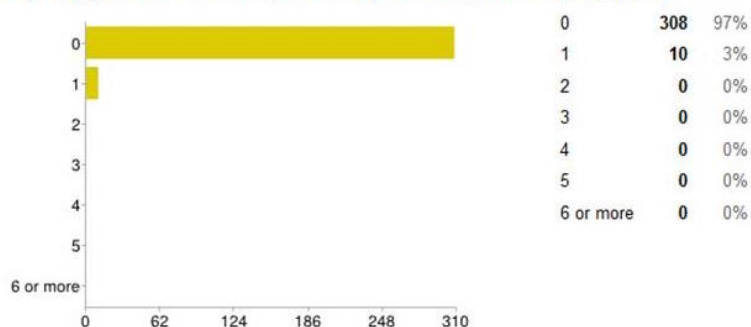
Age 1 [If you have children, how many fall within these age groups:]



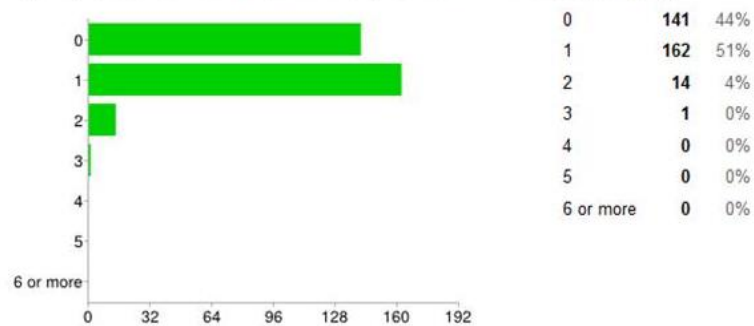
Age 2 [If you have children, how many fall within these age groups:]



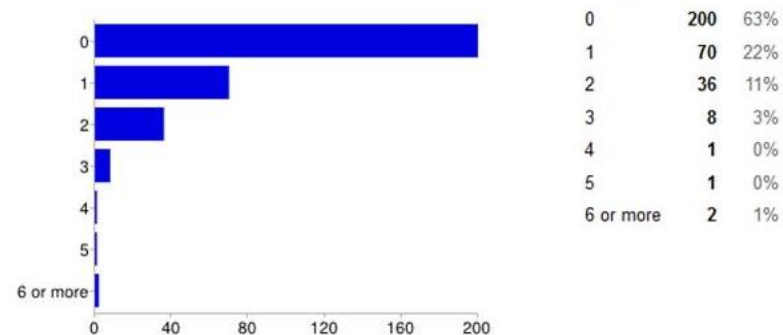
Age 3 [If you have children, how many fall within these age groups:]



Age 4 [If you have children, how many fall within these age groups:]



Age 6 or higher [If you have children, how many fall within these age groups:]



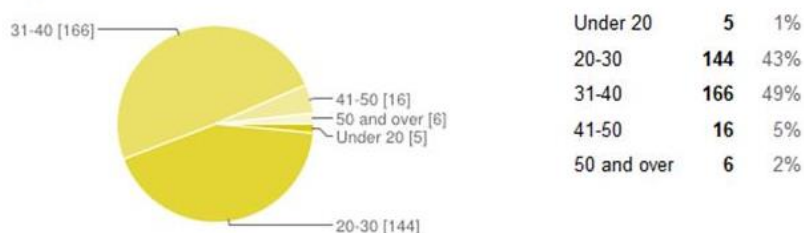
Highest level of education completed:



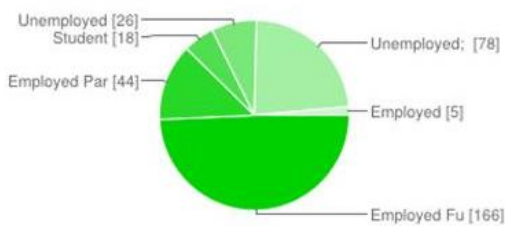
Income level of household:



Your Age:

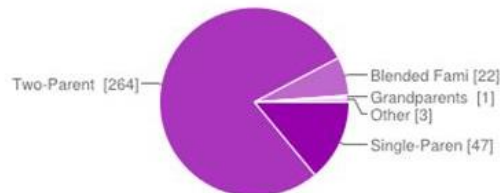


Employment Status



Employed Full-Time	166	49%
Employed Part-Time	44	13%
Student	18	5%
Unemployed	26	8%
Unemployed; spouse/partner is employed	78	23%
Employed	5	1%

Which term, best describes your household:



Single-Parent Family	47	14%
Two-Parent Family	264	78%
Blended Family	22	7%
Grandparents Raising Grandchildren	1	0%
Other	3	1%

Service Provider Needs Assessment

The Iowa River Valley Early Childhood Area Board feels it is imperative to seek input from current service providers, funded and non-funded, about needs they see in the community when working with families with children age prenatal through five. More than 50 different service providers were invited to participate, with 19 participating and representing 850+ children. It is noted that not all items are fundable by an Early Childhood Area. The results were as follows:

What gaps do you see in the services you are providing?

- ◆ Transportation (#1 Answer)
- ◆ Quality staff
- ◆ Not enough funding to serve everyone
- ◆ Education level of participants
- ◆ Staff shortages

Other than additional funding, If you could put together a wish list of things that are needed for your program what would it include?

- ◆ (#1 Answer) - Transportation to help families get children to school and daycare, or themselves to school and work.
- ◆ Consideration for education levels of employees when it comes to credentialing or funding.
- ◆ Funds to support programs by providing materials and training to advance their levels in QRS and to implement a research-based curriculum.
- ◆ Funding to attend needed trainings.
- ◆ Funding to supplement quality staff in programs where their budget is inadequate.
- ◆ Incentives for a parent support program.
- ◆ More staff, professional development, more time for collaboration and partnership.
- ◆ Technology for learning and staff use: computers, tablets, and white board in our school room.

If you could make a wish list of services or things that you see lacking in the families you serve what would it include?

- ◆ Transportation to and from preschool.
- ◆ Temporary housing for families with domestic violence.
- ◆ Parent Education - incentives/transportation so parents can attend trainings/meetings regarding child development; appropriate discipline for young children; and dealing with behavior problems.
- ◆ Need to educate the public about quality practices and programs.

- ◆ Increased awareness of parent services.
- ◆ Indoor gross motor opportunities for children during the winter months.
- ◆ Child psychologist in area that would help with mental health and educational assessments.
- ◆ Activities for the young parents/children/families.

2013 Parent Summit

Additionally, a Parent Summit was held in April 2013 in both Hardin and Marshall County to seek input from parents and caregivers about needs that were important to them. Board members from Iowa River Valley Early Childhood Area were also present. Nearly 50 people in Hardin and Marshall County attended the event to network, share their concerns, voice their opinions, and share ideas on improving the system for serving children. Results were as follows:

Hardin County

1. Parent Education classes are needed
2. Funding is a continual problem for services
3. Food & Nutrition Education
4. Children Living in Poverty
5. Postnatal Care & Support for new Moms
6. Mommy & Me Classes
7. Period of Purple Crying Education
8. 24 hour Urgent care for kids not involving the ER
9. New Parenting Information
10. Information on Child Development/Language Development
11. Sick or barely sick child care
12. Early Literacy Outreach
13. Transitional Care between Preschool and Kindergarten
14. Emotional Support
15. ½ or full Day Preschool Options
16. Non-sports Summer Programming
17. Behavior and Respect for Children beyond school walls
18. Skills and tools for Teachers to Parents
19. Positive Behavior Intervention and Support (PBIS)
20. Consistent Message across school districts about behavior
21. Address gaps between low income and moderate income families
22. Increase Pre-K slots
23. Back up/drop in child care
24. Identify the difference between services such as MICA, DHS, CCR&R, and Home Based Services
25. Lack of planning & focus on immediate needs instead of holistic family support
26. Not knowing what resources are available
27. Early Childhood Mental Health Resources
28. Transportation to preschool is putting pressure on Child Care Providers to transport
29. Loss of O.B., more options for a midwife and ability to serve high risk pregnant mothers. There is a disconnect between Dr.'s office and hospital and for what is needed at home

Marshall County

1. Social opportunities for kids during summer.
2. Moms don't feel their kids are safe.
3. Transportation is needed, and often costly
4. Programming offered in other languages
5. Quality Programming – what is it, how to promote and how to educate parents
6. Being a registered child care provider doesn't matter or mean quality, & vice versa...not being registered doesn't mean that it is not a quality setting. Same perspective with Food Program
7. CCR&R List of providers is confusing
8. Resources to other centers is needed
9. More preschool tuition scholarships
10. More information on 4 year old preschool
11. Income eligibility – may not be low enough for Head Start standards, but still may have difficulty paying for preschool
12. MICA needs to create a connection other options for families who are not income eligible for services. Communicate about other preschool options (scholarships)
13. Better communication of services available
14. More male pediatricians
15. More female O.B. or Midwife options
16. Information on Child Development & Services
17. Making sure children are reaching developmental milestones
18. Need to have translators available at Doctor's office, WIC, etc.
19. More assistance for parents of special needs children
20. Informal opportunities to meet other parents and children
21. Library needs to offer more options for working parents
22. Increased funding for items listed in an IEP
23. Waiting list for Head Start is too long with little follow up on status of enrollments, and ultimately never called back

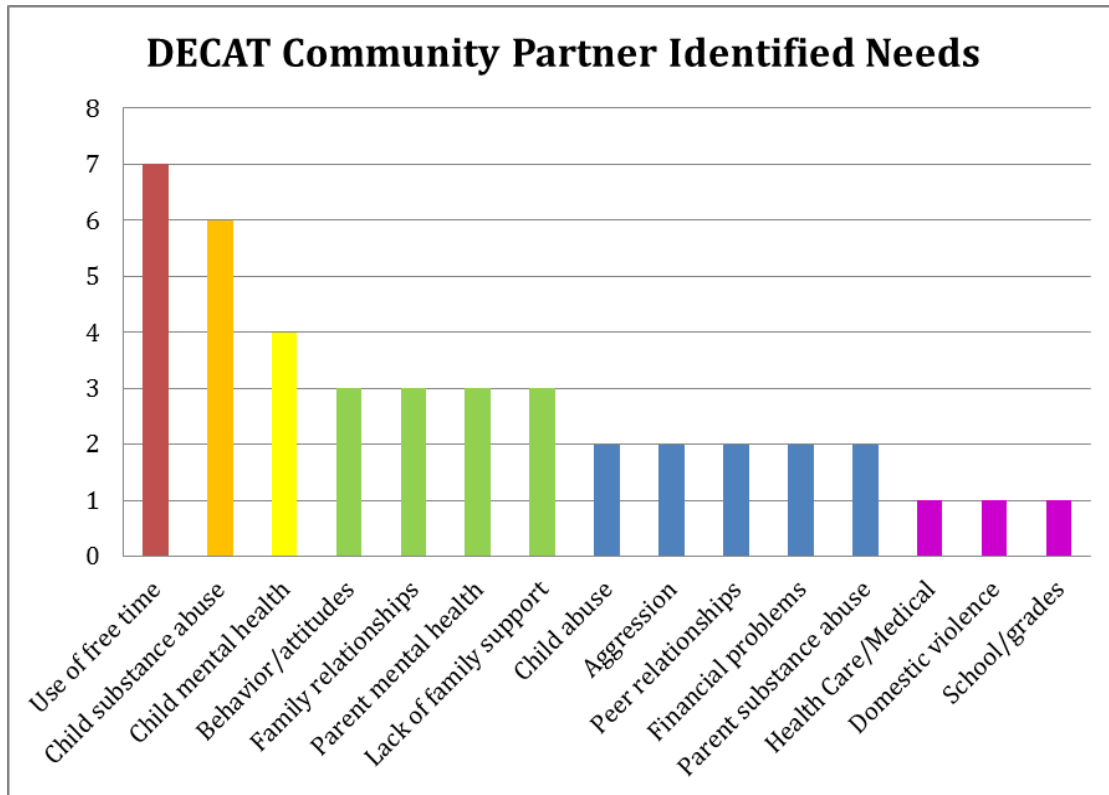
Research From Outside Sources To Determining Needs

The Iowa River Valley Early Childhood Area Board is vigilant in using the data from multiple sources to determine needs, presented on behalf of the community, to guide funding decisions and assist with public outreach.

DECAT Needs Assessment – June 2014

Serves Hardin and Marshall County

The Marshall Hardin DECAT Board received input from local school professionals, Department of Human Services workers, Juvenile Court Service workers, and other community partners as to the needs within their community that are either not currently being met, or that are crucial to the success of their job. Although they are currently funding quality programs, they wanted to ensure that they are spending DECAT dollars in the best way possible. With 56 respondents, 33 (58%) served Age 0-4, and 40 (71%) served Age 5-12. The results of the survey are as follows:



Additional needs voluntarily identified by participants were: Low education of parents, language barriers, life skills, lack of transportation.

- When asked, **“Please list services that you use on a regular basis to help your students/clients and their families.”** The following responses were received: Mental Health (48), Substance Abuse (19), DHS (12), Health and Dental (11), Emergency Food Box (9), Behavioral Health Intervention Service (8), Early Access AEA (7), and School counselors (7).
- When asked, **“Please list any barriers you face which you find difficult to overcome when trying to help your students/clients and their families. This should include barriers to accessing current services.”** The following responses were received: Transportation (32), Lack of parent support (17), Interpretation (13), Accessing Mental Health (12), and Finances (12).
- When asked, **“Please identify services that you feel that our community is currently lacking or needs improvement on in order for you to better assist your students/clients & their families.”** The following responses were received: Transportation (20), Mental Health (20), Refugee Assistance (8), Parent Education (8), and Child Mental Health (7)

Mid-Iowa Community Action (MICA) Family & Stakeholder Needs Assessment – May 2014

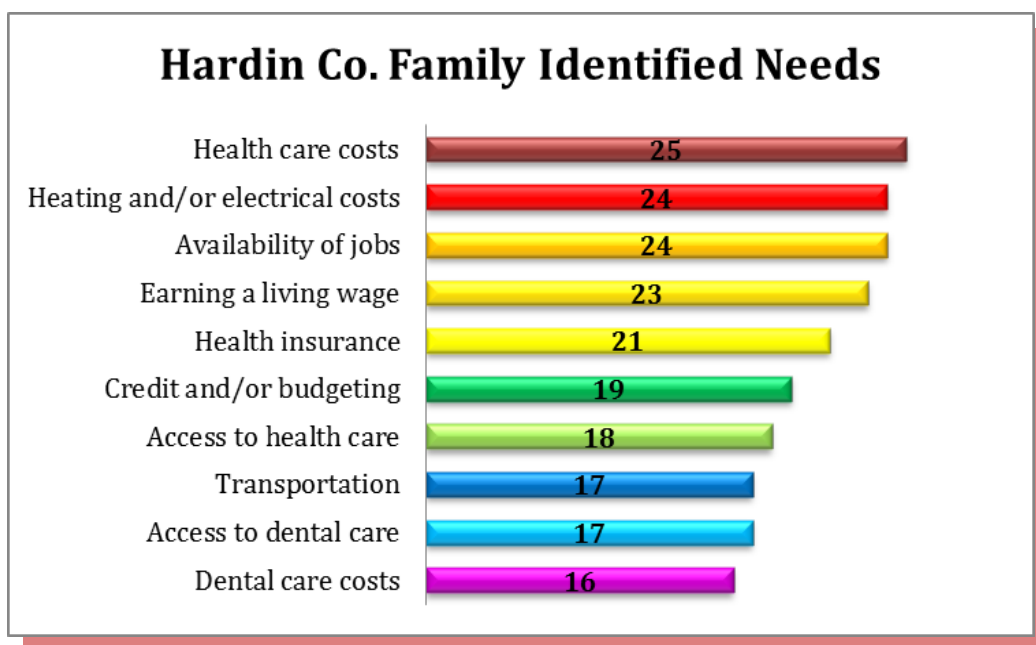
Serves Hardin and Marshall County

To obtain this information from Hardin and Marshall County families, participants were asked by MICA to view a list of needs and/or problems. It was asked, “Has anyone in your household experienced these needs/problems or had difficulty in these areas during the last 12 months?” They were to mark whether they thought the need and/or problem is “Not serious,” “Somewhat serious,” or “Very serious,” in their community.

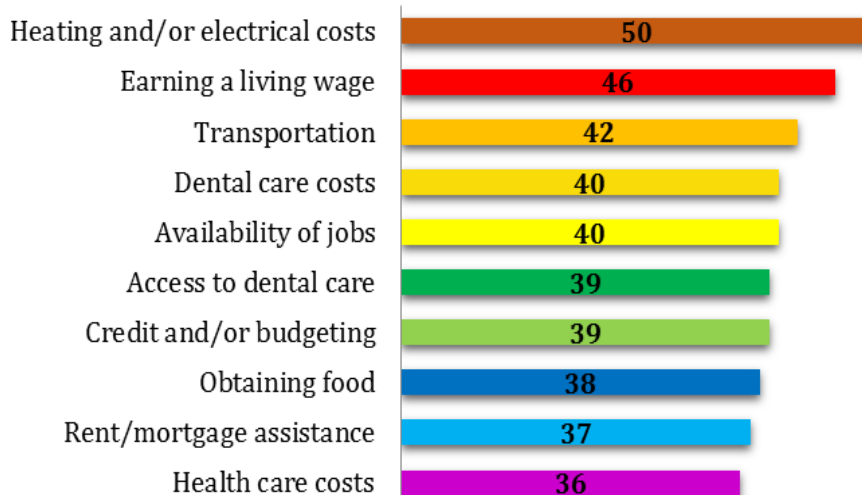
To obtain the information from Hardin and Marshall County stakeholders, participants were asked to view a list of needs and/or problems and mark whether they thought the need/problem is “Not serious,” “Somewhat serious,” or “Very serious,” in their community.

Not all identified needs can be funded by an Early Childhood Iowa Area, but does assist the board in determining community outreach and may assist Family Support programs in setting priorities.

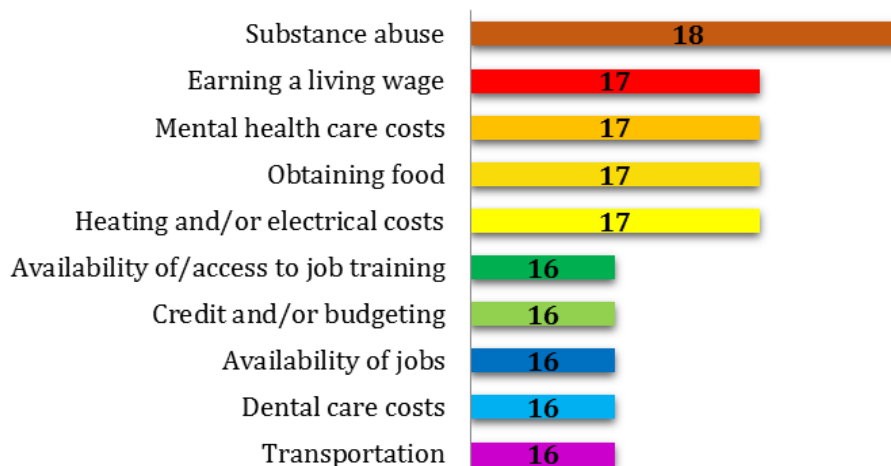
The graphs represent the Top 10 scores by combining the “Somewhat Serious” and “Very Serious” response.



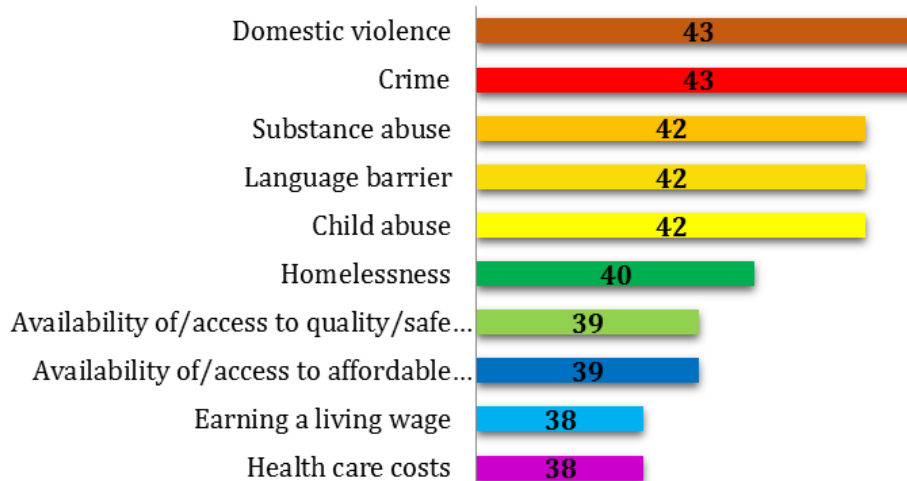
Marshall Co. Family Identified Needs



Hardin Co. Stakeholder Identified Needs



Marshall Co. Stakeholder Identified Needs

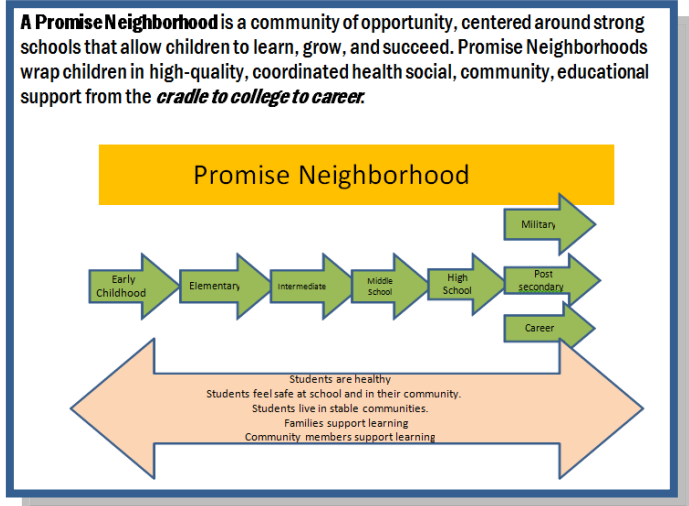


Partnering With Another Agency To Assess Needs

Initiated by Mid-Iowa Community Action (MICA), Marshalltown's Promise Day held November 16, 2013 brought together key community members and legislators to identify, review and plan for the success of all children and young adults, and build upon each other's expertise throughout Marshalltown and Marshall County.

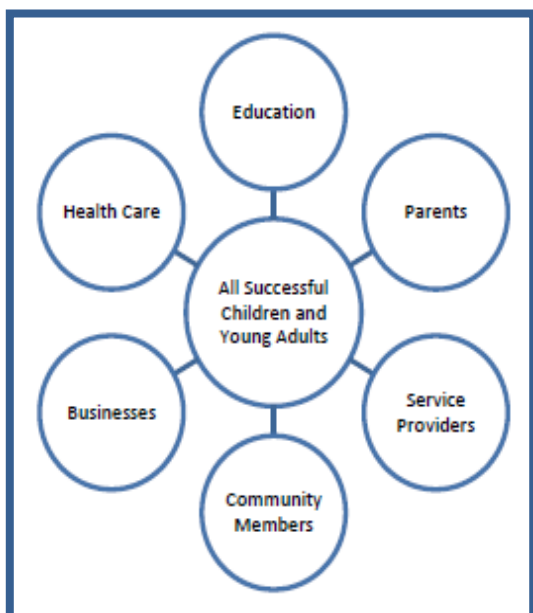
"As a community we can create a town where the children succeed and thrive. Collectively we can work together to generate better outcomes for Marshalltown's children."

The following people participated on behalf of Iowa River Valley Early Childhood Area: four Board members, four service providers, and the Early Childhood Iowa Area Director and the Early Childhood Support Specialist.



The agenda included:

- ◆ Welcome and overview
- ◆ Step One-Understanding the cradle to career continuum of success
- ◆ Step Two – How are we doing? Basic demographics about our children and community
- ◆ Step Three- What do we think will help?
 - What stands out to you as strength? Determine common themes.
 - What surprised you about the challenges we face? Determine common themes.
 - What do you think would be the most important step/strategy our community could take together to change the trajectory; turn the corner for our children? Determine common themes and great ideas. Pick two as your priorities.
- ◆ Popcorn groups share
- ◆ Original groups can refine their responses based on popcorn groups
 - Did you hear anything that influenced how you think about this?
 - Do we want to change anything about our top two priorities?
 - Would you like to commit to continue to help?



Strengths identified:

- ◆ Variety of resources available
- ◆ Collaboration among agencies and services
- ◆ Active community
- ◆ Community awareness

Possibilities identified:

- ◆ Future collaboration between Preschool and Kindergarten teachers
- ◆ There are under-utilized resources that could be used more.

Issue or Needs identified:

- ◆ Transportation continues to be a concern, but need to find the right resource that is cost effective to administer.
- ◆ Work on teaching parents and caregivers the importance of regular preschool attendance.
- ◆ Work on punctuality...how can being punctual by regular attendance in preschool, lead to punctuality in other ways? (Doctor's appointments, meetings, etc.)

Analysis of the Needs Assessment Data Collected

The results Iowa River Valley Early Childhood Area Needs Assessment, Service Provider Assessment, DECAT Assessment, and the MICA Family and Stakeholder Assessment were distributed to Early Childhood Committees, Hardin County Circle of Life, and CHAMPS Director Group. Additionally they were also shared with the IRVECA Board, Service Providers and Community Members present at the May 21st, 2014 Board Meeting for evaluation.

**Please see Section V: Community Collaborations for a description of partners.*

The analysis below clearly identifies the connection between the five Early Childhood Iowa Result Areas and needs listed. For identified needs (listed below) that are followed by the letter, A, B, C, D, E the following reference can be used to link a connection between state identified priorities and needs within our counties:

*A-Children Ready to Succeed in School, B-Healthy Children, C-Secure and Nurturing Families,
D-Safe and Supportive Communities E- Secure and Nurturing Child Care Environments.*

The following is a compilation of the feedback that was received from all groups:

IRVECA NEEDS ASSESSMENT RESULTS ANALYSIS	
1. Based on the results of the survey, what are we currently doing well? What needs are being met?	
Board:	<ul style="list-style-type: none"> • Providing Preschool Tuition Assistance/Making preschool available to all children - A • % of Needs Met is HIGH • Parent Education - C • Services are typically hitting 2 parent households (*which is typical for responsible parents) • High number of kids are going to preschool - A
Public:	<ul style="list-style-type: none"> • Parent Education needs - C • Car Seat Safety need has been met by outside sources - D • Preschool Services - A • Family Support Services - C • Affordable Child Care and Preschool – A, E • Education Services - A • Child Care Consultation - E • Preschool Attendance - A • Able to provide a broad range of health care services - B • Families are able to take care of basic needs (food, shelter, medical) - B
2. What do we need to focus our efforts on? What needs are NOT being met?	
Board:	<ul style="list-style-type: none"> • Could do a better job of marketing ourselves • May not represent a complete picture • Outreach to providers could be strengthened (conducts needs assessment by providers yearly) - ALL • Transportation is needed - B • Accessibly to child care - E
Public:	<ul style="list-style-type: none"> • Transportation - B • Healthcare access - B • Lowering cost of preschool tuition; aware of preschool tuition assistance - A • Making sure parents receive information about financial and food assistance – C • Employment - C • Continue to provide scholarships for childcare/preschool – A, E • Comprehensive Preschool Programming - A • Family Support, Adult Education & Supports - C • Mental/Behavioral Health - B • Help families locate child care - E

3. How can the IRVECA Board best meet the needs represented in the surveys?	
Board:	<ul style="list-style-type: none"> • Ensure referrals are being made - <i>C</i> • Increased collaborative efforts with providers - <i>ALL</i> • Ensure families are receiving more information and education through our service providers
Public:	<ul style="list-style-type: none"> • Family Time spent together - <i>C</i> • Ensuring all children have appropriate caretakers - <i>C</i> • Preschool Education - <i>A</i> • Provide resource information for families - <i>ALL</i> • Direct funding • Look for other ways to partner with other services to transport to and from preschool - <i>B</i> • Look at finding preschool transportation services - <i>D</i>
4. What do families value?	
Board:	<ul style="list-style-type: none"> • Activities at home –may me need to find a way to reach them at home • Safe and caring environment, more than QRS - <i>E</i> • Financial stability - <i>C</i>
Public:	<ul style="list-style-type: none"> • Safe and secure environment for kids - <i>E</i> • Accessibility to a wide variety of supports and services - <i>ALL</i> • Opinions of those they know • Child safety in home, community, child care – <i>C, E</i> • Education - <i>A</i> • Licensed and experienced child care providers - <i>E</i>
5. How can we best “reach” the families we serve with information?	
Board:	<ul style="list-style-type: none"> • Social Media - <i>ALL</i> • More outreach through a variety of sources • Through service providers - <i>ALL</i>
Public:	<ul style="list-style-type: none"> • Community Events and Gatherings • School • Friends and family/word of mouth • Technology – website/internet, text messages, social media work best for young families • Doctor offices • Child Care Centers/homes - <i>E</i> • School Districts
6. What gaps in services were identified? How do we fill those gaps?	
Board:	<ul style="list-style-type: none"> • Communication on Services - <i>ALL</i> • Transportation – <i>D</i>
Public:	<ul style="list-style-type: none"> • Transportation - <i>D</i> • Healthcare access - <i>B</i> • Wrap Around care available after preschool would decrease the need for transportation - <i>A</i> • In regards to consultation, a variety of folks are offering services but somewhat focused or disjointed, continue with collaboration meetings to ensure duplication doesn’t happen - <i>C</i> • Full day preschool to minimize transportation - <i>A</i> • Need for more Family Support - <i>C</i>

7. What opportunities exist?
Board: <ul style="list-style-type: none"> • Quality Preschool Programs and Service - <i>A</i> • Family Support - <i>C</i> • Healthy Children - <i>B</i> Public: <ul style="list-style-type: none"> • Schools, churches and agencies willing to reach out assist families - <i>ALL</i> • Aligning health care access with families - <i>B</i> • Forming partnerships between school districts, private centers, providers and other agencies – <i>ALL</i> • Funding for Wrap Around and Preschool - <i>A</i> • Intensive Family Support services - <i>C</i> • Forming partnerships to provide comprehensive services/all day options - <i>A</i>
8. What are possible threats to providing services? How can that be overcome?
Board: <ul style="list-style-type: none"> • Funding amounts • Affordable & availability of child care; child care providers on decline in some communities - <i>E</i> • State ECI Board funding rules change Public: <ul style="list-style-type: none"> • Those truly needing assistance and support will not ask for help • Difficulty locating and connecting with families in need • Competition for services • Increased need for collaboration to overcome competition • Funding restrictions – need to lobby state agencies and lawmakers • Time and travel between counties lessens opportunities for direct services • Lack of interest/involvement from providers and parents • Language barriers • Making parents aware of transportation for preschoolers • Providing appropriate safety materials for preschoolers being transported
9. Do any new priorities need to be added?
Board: <ul style="list-style-type: none"> • Mental Health issues are on the rise. - <i>B</i> Public: <ul style="list-style-type: none"> • Early Head Start/Early Childhood partnerships - <i>A</i> • Adult education and support - <i>C</i>
10. Do any of our current priorities need to be removed?
<i>None, as indicated by Community Feedback.</i>

Section III: Priorities Identified

Priorities of the Early Childhood Iowa Area Board

Based on the analysis of the information collected and feedback received, the Iowa River Valley Early Childhood Area Board has identified the following priorities, in no particular order:

- **Quality & Affordable Preschool Experience**
- **Quality & Affordable Child Care**
- **Family Support and Healthcare Services**
- **Transportation Services**
- **Parent Education Opportunities and Early Literacy Skills**
- **Child and Parent Mental Health Assistance, Social &, Emotional Skills**

Priority	Identification of Need and Rationale for Priority
Quality & Affordable Preschool Experience	The Board feels that it is more important to provide “high” quality and affordable preschool environments. It ranks as 3 rd and 4 th highest priority of the IRVECA Needs Assessment, while preschool tuition assistance ranks 3 rd highest as a specific need requested. This has been accomplished in past years by providing optimal funding to quality-rated preschools, and the Board will continue this effort in future years. The Board continues to raise the level of quality by giving priority funding to those preschools that are QPPS verified or QRS Rated and/or utilizing an evidenced based curriculum. The Board has also created, in partnership with CCR&R, opportunities for Quality Improvement Grants and CPR/First Aid Grants to assist us in this effort.
Quality & Affordable Child Care	All children are to be cared for in a safe and healthy environment. Availability and affordability for Child Care or Preschool, rank 3 rd and 4 th highest priority identified in the IRVECA Needs Assessment, while Locating Child Care is the 2 nd highest need for parents. The need for “registered” home providers has grown. In 2012, children being cared for by a family member ranked 2 nd over Child Care Home Provider, and Child Care Center/Wrap Around Preschool, but in 2014 rose to the top with 35% of participants having a family member care for their child(ren). Participants felt that when searching for Child Care, they valued a licensed/registered and experienced provider, and safe and caring environment. Across the state of Iowa, there has an over-all decrease in the amount of home providers, and our counties are no different. Like preschool, the Board has also created opportunities for Quality Improvement Grants and CPR/First Aid Grants to assist us in this effort.
Family Support and Healthcare Services	Credentialed home visitation programs are recommended to assure home environments are safe and families are connected to outside resources. The Board knows that a strong partnership with public health providers for healthier communities and families is essential. Access to healthcare services was the top priority identified by participants of the Iowa River Valley Early Childhood Area Needs Assessment. Connection to outside resources and information ranked 4 th highest as a specific need requested by participants. Likewise, the DECAT Needs Assessment results indicate a need for building family relationships and that a lack of family support exists.
Transportation Services	Among various Early Childhood groups within Hardin and Marshall County, the need for transportation is constant concern. In the Iowa River Valley Early Childhood Area Needs Assessment, the highest need families would ask for, was Transportation. Although 64% said they have no problems transporting to

<i>Transportation Services (Continued)</i>	preschool, one family reported that they had to remove their child from preschool because they did not have a car. Likewise, a child care home provider indicated that transportation was the biggest challenge for them and their working parents. Parent Summit participants indicated that it may put pressure for child care providers to start transporting children to preschool and other means of transportation have become costly. The DECAT Needs Assessment lists Transportation as the toughest barrier to overcome when helping clients. Transportation also made one of the top ten needs in 3 of 4 MICA Needs Assessments. Research has shown that children who have attended a quality preschool are much more prepared and ready to learn when they start school. Many of our young children live in rural areas and would not be able to attend a quality preschool if transportation was not provided.
Parent Education Opportunities and Early Literacy Skills	Currently, Parent Education opportunities exist within Family Support Programs. However, more opportunities are needed. As stated in the Service Provider Needs Assessment, parent education is needed to learn about child development, appropriate discipline and dealing with behavior problems. Additionally, it was requested by a participant in the Hardin County Parent Summit and identified as a service that was lacking or needed improvement in the DECAT Needs Assessment. This can also include teaching parents about social, emotional, and early literacy skill. By supporting programs that encourage social-emotional development, working with Kindergarten teachers/schools and family support professionals, and teaching early literacy skills to children beginning at birth, they will be ready to learn when they start Kindergarten. By offering parent education classes, trainings for caregivers, written information, and consultation, our hope is that every child is ready to learn when starting school.
Child and Parent Mental Health Assistance, Social and Emotional	The need for mental health services for young children and their parents has been identified as large need in Hardin and Marshall County. Many Mental Health Professionals have full caseloads or have insurance restrictions, so it has become difficult for families to seek assistance. Child and Mental Health ranked high on the DECAT Needs Assessment, is the most used service by their clients, is the 3 rd highest barrier for families to overcome and was the second highest service that was lacking or needing improvement.

Community-Wide Indicators of the Early Childhood Iowa Area Board

Beginning with the first needs assessment in 2011 and then in 2013-14, the Board selected and adopted one indicator per state identified priority area. In some cases, the indicator represents data with a linkage to more than one locally identified priority. As we continue track progress and growth within our Early Childhood Area, we will be using community input and the State Early Childhood Iowa Board Tool K(B). Each year, trend data is reviewed to track progress and/or determine stronger areas of focus.

After a review in 2014 and with input for county-wide educators, the Board will no longer be tracking Kindergarten Readiness using DIBELS data for the following reasons:

- ◆ the data has become increasingly difficult to locate
- ◆ most schools in our Early Childhood Iowa Area will begin tracking FAST next year
- ◆ this is no longer tracked by the Early Childhood Iowa State Board

We will be replacing it with the evaluation of Quality Early Learning Environments.

EARLY CHILDHOOD IOWA AREA INDICATOR ANALYSIS

Community ECI Area Indicators	Identify the State Results Linked to the Indicator by A, B, C, D, E	Identify Source of data for each Indicator	Baseline Data (date & numerical value)	Subsequent Year's Data (Trend Line) Identify Year				
Quality and Affordable Preschool Experience, Early Literacy Skills	A – Children are Ready to Succeed in School	Quality Early Learning Environment s – <i>adopted in fall of 2014</i> IA Dep. of Ed NAEYC Iowa Dep. Of Human Svcs.	2010-11	2011-12	2012-13	2013-2014	2014-2015	2015-2016
National Accreditation			<i>Hardin - 1 Marshall - 4</i>	<i>Hardin - 1 Marshall - 3</i>	<i>Hardin - 1 Marshall - 2</i>	<i>Hardin - 1 Marshall - 2</i>	Not yet reported	
QPPS Verified			<i>Hardin - 6 Marshall - 3</i>	<i>Hardin - 6 Marshall - 3</i>	<i>Hardin - 6 Marshall - 3</i>	<i>Hardin - 6 Marshall - 3</i>	<i>Hardin - 6 Marshall - 4</i>	
QRS 3,4, or 5 – Includes CDH, DHS Licensed Preschools and Centers, Dept. of Ed Centers, Preschools, and Wrap Around			<i>Hardin - 1 Marshall - 4</i>	<i>Hardin - 1 Marshall - 6</i>	<i>Hardin - 1 Marshall - 6</i>	<i>Hardin - 1 Marshall - 7</i>	Not yet reported	
<p><i>Quality Early Learning Environments</i> Definition: Quality early learning environments that are NAEYC (National Association for the Education of Young Children) or NAFCC (National Association of Family Child Care) accredited and/or meet Head Start program performance standards, and/or verified QPPS sites, and/or have achieved QRS level 3, 4, or 5.</p> <p>Rationale for Selection: Over 73% respondents indicated their child would be attending preschool. The IRVECA Board has annually provided more than 100 preschool tuition scholarships, and we want to ensure learning environments are meeting state identified quality standards.</p> <p>Goal (numerical value & projected timeline) * at time Indicator was adopted 10% increase each year in QRS participants</p>								

Analysis of Quality Learning Environments at the time the Community Plan was revised:

After West Marshall Community School District completes its Iowa Voluntary Preschool verification in 2014-2015, 100% of our Community School Districts will be participating in the program. The number of QRS participants has remained consistent for three years, and the IRVECA Board is has made it a priority promote participation. The Board has identified six funded programs who are working on their QRS, and so it is anticipated that the numbers will change in Fy'15 for both counties.

IRVECA Board Analysis: 2015**IRVECA Board Analysis: 2016**

Family Support & Healthcare Services, Quality Child Care Environments	B – Healthy Children E- Secure & Nurturing Early Learning Environments	Immunized Children:	2000	2008-9	2010	2011	2012	2013
		Iowa	<i>Iowa</i> 85.9%	<i>Iowa</i> 88%	<i>Iowa</i> 69%	<i>Iowa</i> 64%	<i>Iowa</i> 71%	<i>Iowa</i> 71%
		Iowa Immunization Program – Iowa Department of Public Health; % of children enter into IRIS as “active”	<i>Hardin</i> 91.4%	<i>Hardin</i> 97.33%	<i>Hardin</i> 69%	<i>Hardin</i> 70%	<i>Hardin</i> 74%	<i>Hardin</i> 80%
			<i>Marshall</i> 78.4%	<i>Marshall</i> 97%	<i>Marshall</i> 75%	<i>Marshall</i> 73%	<i>Marshall</i> 77%	<i>Marshall</i> 77%

Immunized Children

Definition: Rate of Children Immunized by Age 2.

Rationale for Selection:

With an increasing need for family support services, the Board wants to ensure children receiving services are also immunized and connected to appropriate medical services. Additionally, we rely on Child Care Nurse Consultants to ensure child care environments healthy by recommending immunization schedules to stop the spread of infectious diseases.

Goal (numerical value & projected timeline) * at time CP was revised:

Reach 5% or higher than the State average.

Analysis of Immunized Children Data at the time the Community Plan was revised:

Although we would like to see the percentages a little higher, there has been maintenance and/or continual grow since 2011, and we continue to be above the State average.

IRVECA Board Analysis: 5/21/13

The Board will work with local Public Health and funded programs to ensure immunization occurs on-time.

IRVECA Board Analysis: 5/21/14

Numbers are fluctuating too much and there are a variety of reasons why this could be happening. (i.e.) Some may not get the complete series, the way it is being tracked, not all clinics use IRIS, transient families in WIC Clinics.

Family Support, Quality Child Care Environments, Parent Education Opportunities/ Social, Emotional, Skills, Child and Parent Mental Health Assistance	C – Secure and Nurturing Families	Incidence of Child Abuse	2001 <i>Iowa</i> 43.8%	2010 <i>Iowa</i> 50.8%	2011 <i>Iowa</i> 50.8%	2012 <i>Iowa</i> 52.0%	2013 <i>Iowa</i> 50.3%
	D- Safe and Supportive Communities	Iowa Department of Human Services	<i>Hardin</i> 39.7%	<i>Hardin</i> 51.5%	<i>Hardin</i> 56.5%	<i>Hardin</i> 53.0%	<i>Hardin</i> 49.3%
	E – Secure & Nurturing Early Learning Environments		<i>Marshall</i> 48.5%	<i>Marshall</i> 48.8%	<i>Marshall</i> 57.7%	<i>Marshall</i> 52%	<i>Marshall</i> 52.6%

Incidence of Child Abuse

Definition: Child Abuse Incidence Rate for Children 5 years and under

Rationale for Selection:

Children are in Safe and Secure Environments was listed has the second highest priority among respondents. Child Abuse can happen at home, in our communities and child care settings

Goal (numerical value & projected timeline) * at time CP was revised:

Be below the state average by more than 2% within three years.

Analysis of Child Abuse Data at the time the Community Plan was revised:

We would like see our percentages decrease significantly. Hardin County has seen a 7.2% decrease and Marshall County has seen a 5.1% decrease since 2011. Progress is being made, but increased awareness and education will be important.

IRVECA Board Analysis: 5/21/13

Jana Enfield (provider, CAPS) noted that when there is an increase in abuse, there is also an increase in poverty, sexual abuse, mental health, and domestic violence. It was also noted that the supervisor for the area may change the standard for abuse. Board Members also noted that they types of abuse are not reflected in this number, and that not all cases may be reported. Board and Programs will continue to monitor.

IRVECA Board Analysis: 5/21/14

Updated information was not available at the time of review. It has since been updated and provided on page 10-11 of this Community Plan.

Affordable Preschool, Affordable Child Care, Family Support, Transportation	D – Safe and Supportive Communities	Children Living in Poverty	2000 <i>Iowa</i> 13.0%	2007 <i>Iowa</i> 13.7%	2008 <i>Iowa</i> 14.2%	2009 <i>Iowa</i> 15.6%	2010 <i>Iowa</i> 16.2%	2011 <i>Iowa</i> 17.1%
		Child and Family Policy Center	<i>Hardin</i> 11.7%	<i>Hardin</i> 14.1%	<i>Hardin</i> 15.3%	<i>Hardin</i> 16.6%	<i>Hardin</i> 17.4%	<i>Hardin</i> 18.0%
			<i>Marshall</i> 13.2%	<i>Marshall</i> 18.8%	<i>Marshall</i> 17.9%	<i>Marshall</i> 18.0%	<i>Marshall</i> 18.4%	<i>Marshall</i> 20.4%

Children Living in Poverty

Children under six years of age living in poverty.

Rationale for Selection:

The number of children 0-5 represented in needs assessment totaled 442 of 560 (78%), and the highest amount of respondents living at an income level of under \$30,000 at 41% of families. Our work with system building with community partners will be important.

Goal (numerical value & projected timeline) * at time CP was revised:

Be below the state average each year by working with community partners and providers.

Analysis of Child Poverty Data at the time the Community Plan was revised:

Both Hardin and Marshall County remain above the state average. Establishing a connection between our providers and community partners to help boost local economy will be important.

IRVECA Board Analysis: 5/21/13

As noted above, this may be increasing due to other factors. Because there is no further data, the board will continue to promote collaboration among service providers through its Request for Proposal process and Performance Measures.

IRVECA Board Analysis: 5/21/14

Despite our best efforts, numbers continue to increase and stay above the state average.

Could be caused by transient families, and low jobs with low pay.

Continue to work with programs that work with families on financial security, and continue to provide scholarships for low income families with children in preschool.

Affordable and Quality Child Care	E – Secure & Nurturing Early Learning Environments	Availability of Child Care Iowa Department of Human Services -Child Care Resource and Referral		FY'09	FY'11	FY'12	FY'13	Fy'14
			Child Development Homes					
			<i>Hardin Marshall</i>	25 96	22 80	23 74	23 81	17 67
			Department of Education Operated Centers					
			<i>Hardin Marshall</i>	<i>Not Reported</i>	0 1	0 0	0 0	0 0
			Department of Education Operated Preschools					
			<i>Hardin Marshall</i>	<i>Not Reported</i>	5 3	5 3	5 3	5 3
			Department of Education Before/After Programs					
			<i>Hardin Marshall</i>	<i>Not Reported</i>	3 0	3 1	3 1	3 1
			Licensed Centers					
			<i>Hardin Marshall</i>	4 4	5 5	5 5	5 5	5 5
			Licensed Preschools					
			<i>Hardin Marshall</i>	<i>Not Reported</i>	3 9	3 8	3 8	3 7
			Non-Registered Child Care Homes					
			<i>Hardin Marshall</i>	<i>Not Reported</i>	33 96	20 63	22 33	18 30
			Capacity					
			<i>Hardin Marshall</i>	674 1414	1,077 2,054	1,204 1,809	1,044 1,765	964 1,648

Availability of Child Care

Definition: The number of "slots" or "spaces" potentially available for a child in a licensed or registered setting.

Rationale for Selection:

Listed as third highest in the need assessment, with the largest number of children 161 of 301 (53%) being cared for by a Child Care Home, Child Care Center of Wrap Around Care outside the home.

Goal (numerical value & projected timeline) * at time revised:

Maintain capacity from previous year.

Analysis of Child Care Data at the time the Community Plan was revised:

Hardin and Marshall County have both seen a decrease in the number of registered Child Development Homes, while Child Care Centers remain consistent. We will work to increase the number of CDH's, and the number of register/licensed spaces.

IRVECA Board Analysis: 5/21/13

The number of registered Child Development homes is decreasing, believed to be results of state regulations for home providers. New mandatory finger printing regulations may find providers who aren't willing to go through the process. Both counties have seen a decrease in population, which may also contribute to the declining number of child care home providers. The Board will also work with CCR&R to look at capacity vs. the number of eligible children for child care.

IRVECA Board Analysis: 5/21/14

Despite the Board's best efforts to increase quality and capacity, providers are choosing to go un-registered for a variety of reasons. Other issues include: lack of support from the food program, some non-registered are getting state assistance, cultural settings may dictate that a family member stay home, parents may be alternating shifts to avoid paying for child care. Also noted, free preschool has hurt numbers for child care providers and are limited by the number of children who they can serve until age 3. Although we want more providers to become QRS rated, parents are not demanding it so it is not a priority for home providers.

Strategies of the Early Childhood Iowa Area Board

The Iowa River Valley Early Childhood Area Board is focused on moving a system of care and providing service forward in Hardin and Marshall County. Since 2012, the Board has implemented and improved their practices, established goals for funded programs, and promoted a continuity of services.

Support for Quality Programs

Family Support Programs: Only programs that have received or are working on the Iowa Family Support Credential or comparable state or national standard are eligible to apply. All programs also participate in the RedCap Data Collection System, and assist and participate in the development of Hardin/Marshall Coordinated Intake System.

- ◆ FY'13: 1 program was Iowa Family Support Credentialed, 1 program was Head Start Credentialed
- ◆ FY'14: 1 program was Iowa Family Support Credentialed, 1 program was Head Start Credentialed, and 1 program had been accepted into the Iowa Family Support Program.
- ◆ Goal: 100% Iowa Family Support Credentialed or Head Start Credentialed Programs by June 30, 2016

Preschool Support Services: All programs demonstrating QRS 3, 4, or 5, QPPS and/or Head Start Program Performance Standards and utilizing a research-based curriculum will receive priority funding. Programs who do not currently meet these requirements, may submit a copy of the application and/or registration information to demonstrate their commitment.

- ◆ FY'13: On June 30, 2013, 89% of our funded preschool tuition programs were implementing a quality initiative and using Creative Curriculum.
- ◆ FY'14: On June 30, 2014, 100% of our funded preschool tuition programs were implementing or working towards a quality initiative. 100% of our programs were using Creative Curriculum.
- ◆ Goal: 100% of Preschool Scholarship Programs participating in QRS by June 30, 2015, and all remaining programs participating by June 30, 2016.

Child Care Services: Children in a Child Care setting shall have access to a healthy and educational environment. The IRVECA Board shall offer opportunities for professional development, enhancement of environments, and improving health and safety.

- ◆ FY'13 & FY'14: Recognizing that professional development costs can be burdensome for some providers, over the last two years the board has funded reimbursement for CPR & First Aid Certification. To increase participation in QRS and level of the Quality, the Board also offered Quality Improvement Grants, funded certified training opportunities, and utilized Child Care Nurse Consultant Services to improve health and safety.
- ◆ Goal: Continue to increase health and safety protocols and promote quality practices.

Capacity to Address Priority /Results Identified

The Iowa River Valley Early Childhood Area Board requires collaboration among funded to programs to ensure a continuity of services. Methods for addressing priorities and results exist within our area that include, but are not limited to:

- ◆ Beginning with the Request for Proposal process, applicants are asked to demonstrate a linkage to the Iowa River Valley Early Childhood Area Community Plan, Priorities and Indicators to determine success. This is tracked throughout the fiscal year.
- ◆ Contracted programs are required to attend a minimum of one Board meeting per year and encouraged to provide an update to the Board.
- ◆ Beginning in FY'15, voluntary provider presentations will be a standing agenda item in which an open conversation between Board members and providers provides the opportunity to discuss priorities, accomplishments and gaps in service..
- ◆ Lastly, the Board conducts an annual review of indicator trend data that includes input from the community present at the meeting.

How Needs/Gaps Regarding Identified Diverse Populations Are Met

The Iowa River Valley Early Childhood Area Board relies on the service providers to assist us in determining if the needs of diverse populations are being met. In the event that a need or gap is identified by a service provider, procedures are in place to request additional funds (when available) or to amend a current budget. General stipulations include:

- ◆ Programs must demonstrate a true need or gap in service for the funds.
- ◆ Budget revisions are monitored by the Fiscal Oversight Committee.
- ◆ Allocation of additional funds are a decision made by the Iowa River Valley Early Childhood Area Board.
- ◆ Forms for either purpose are provided in the Provider Guide and/or available by contacting the Early Childhood Iowa Director.

Additionally, the Iowa River Valley Early Childhood Area Board may conduct needs assessments as needed throughout the fiscal year or rely on feedback received from community groups.

What Might Be Missing

Hardin and Marshall County continually have a changing population that can, at times, be transient and differ in cultural expectation. It is also known that when assessing needs, the majority of families that need assistance are not responsible for completing the assessment. Future plans include a yearly assessment that will be required when families are applying for tuition scholarships. We do know that the need for services is always present and consistently growing, while funding for services continues to decrease.

Strategies for Moving the Plan Forward:

- ◆ Through a professional development plan, board assessments and community input - work to strengthen our board, its policies, and its practices.
- ◆ Through a performance review and a professional development plan - work to strengthen our Early Childhood Iowa Director.
- ◆ Through involvement in area-wide activities and groups - work to strengthen our public awareness, partnerships and collaborations, communications, outreach, and expand business partnerships.
- ◆ Through sub-committees, work to maintain compliance with Levels Of Excellence.
- ◆ Through our contracts, ensure Providers are active participants in the Early Childhood Iowa System and work collaboratively with other funded Early Childhood Iowa project to utilize funds to their fullest.
- ◆ Through legislative advocacy efforts, educate legislative representatives about Early Childhood services, local progress, and need for additional financial support.

Measuring the Performance of Our Programs

Contracted programs for the Iowa River Valley Early Childhood Area Board are required to report to Board on a bi-annual basis about those they serve and progress towards meeting program identified goals. This is accomplished by:

- ◆ Once programs are contracted, they must identify year-end goals within 30 days of a signed contract. Programs are measured against their goal with the expectation that 50% of the year-end goal should be met at mid-year, and if not, be provided an opportunity for justification.
- ◆ It is a requirement of every funded program to provide Performance Measures and Narrative Summaries two times per year.
- ◆ The Board utilizes GoogleDocs as a way to simultaneously collect data. Board members can view submissions in “real time” to ensure timely submission. To date, this method has a 100% success rate for reporting on-time.
- ◆ All year-end data is to be submitted by July 15th for submission into the Iowa River Valley Early Childhood Area Board Annual Report.
- ◆ A program review of the contract file and progress towards is completed prior to a scheduled site visit. Mid-year site visits occur annually at which service providers, Board members and the Early Childhood Iowa Area Director are present. This ensures contract compliance, and provides an opportunity for direct feedback from our service providers.

The general public can access the data that measures the program's performance by reviewing the Annual Report that is produced annually. To obtain a copy, please contact the Iowa River Valley Early Childhood Area office at 641-648-6575, email iarivervalleyec@gmail.com or visit http://iowarivervalleyec.com/Annual_Report.html.

Progress Within Our Programs

The Iowa River Valley Early Childhood Area Board continually monitors the progress, to ensure benchmark goals are being met. Although we are confident in their services, ensuring the best possible outcomes for children is one of our top priorities. It is noted that we wish we could serve every child in need of assistance; however we are ultimately limited by the amount of funds we receive annually. To review a historical look at our program's performance, please see Attachment B – Program Performance Measure Trend Data. Because this Board has only been in operation since July 1, 2012, the data begin with FY'13.

Process for Awarding Funds

The Iowa River Valley Early Childhood Area Board utilizes a Request for Proposal process. Annually, the Fiscal Oversight Committee reviews the Request for Proposal Application, for approval by the Board. The Request for Proposal will be released on/after April 1st prior to the new fiscal year. Deadlines for submission are subject to change. Each program requesting funds must complete an application that states the program's priorities, goals, intentions and collaboration efforts within the community to ensure non- duplication of services. The programs also must demonstrate how their programs meet the priorities and desired results of the Iowa River Valley Early Childhood Area, and funding decisions will be made accordingly. The Request for Proposal is publicly made available by announcements in varying media forms, the Iowa River Valley Early Childhood Area website, email distribution, newsletter announcement, and our office.

After applications have been submitted, the following will occur:

- ◆ The Early Childhood Iowa Area Director will check the applications for completeness; noting discrepancies or missing items. Applications lacking the required elements may be negatively impacted during the review and scoring process. The Early Childhood Iowa Area Director will not make any recommendations for funding, but will provide information as requested by the Committees or the Board.
- ◆ The applications will be appropriately divided by the Early Childhood Iowa Area Director and distributed to each of the Iowa River Valley Early Childhood Area Board Sub-Committees for review. All applications will be posted online through Google Docs so that Board members can view every application.
- ◆ Each Sub-Committee will meet to review their group of applications and will complete a cumulative review form that will be shared with the Iowa River Valley Early Childhood Area Board. Results from the site visit and a contract compliance report are used in determining future funding for renewing programs.
- ◆ The Iowa River Valley Early Childhood Area Board will review Committee recommendations at a regularly scheduled meeting to determine final contract awards. All funding review meetings are open to the public.
- ◆ All applicants will be notified in writing regarding the funding decision. Notification will be made to the Contact Person on the application cover sheet within 30 days of the Iowa River Valley Early Childhood Area Board's decision to make the award.

Appeals Process

Applicants who are denied funding may appeal to the Iowa River Valley Early Childhood Area Board. The appeal must be made in writing and filed within 10 days of the date of the written notification to the applicant of the grant. The request to review the award decision must be in writing and must clearly and fully identify all issues being contested by references to the line(s), section(s) and page(s) number of the Application. The Board shall review the request to review the award decision at the next scheduled Board meeting and issue a written decision within thirty (30) working days of the review. The decision of the Board shall be final.

Additional requirements and expectations for funded programs can be found in the current Request for Proposal.

Section IV: Fiscal Assessment

Iowa Code requires that local Early Childhood Areas identify all federal, state, local, and private funding available to provide services to children age prenatal through five. Obtaining this information can be challenging, as funding sources are continually changing. Funding awards from outside sources occur at different times throughout the year, new grants are added, and sadly some discontinue. In some cases, organizations are reluctant to divulge information because funding has become tight and competition increases.

Each fiscal year, the Iowa River Valley Early Childhood Area Board requires applicants to demonstrate through our Request for Proposal Process, the amount of outside funds used to support the program. Likewise, programs are contracted to provide more accurate financial information to the Board in January and July. The information provided by programs helps ensure funds are not being supplanted and that the cost per child remains as low as possible.

Sustainability is of high value for our Board. The Iowa River Valley Early Childhood Area Board wants to ensure that we are not the sole source of funding for programs, in the event that a reduction or elimination of funds may occur. Currently the Board encourages a 5% match of additional funds for service providers. In some cases, applicants that cannot demonstrate a source of outside funds may be eliminated, unless extenuating circumstances can be proven.

When the Board conducted the Service Provider Needs Assessment, they gathered additional information including: number of children or families served, estimated funding, source of funding, and level of collaboration. The Iowa River Valley Early Childhood Area Board utilized Resource Directories that were published in both Hardin and Marshall County to contact more than 50 different agencies. Although the purpose was clear and because this is a voluntary process, not every program participated. As a result, this may not represent 100% of all funds used to support services prenatal through five in Hardin and Marshall County.

The Fiscal Assessment that follows also includes financial data submitted by Fy'14 Service Providers for the Iowa River Valley Early Childhood Annual Report. We do feel that this is an appropriate depiction of the funds used to support current contracted programs.

When determining the level of the collaboration with Iowa River Valley Early Childhood Area, use the following key:

Levels of Collaboration KEY

- Communication – There is a process for the exchange of information and common understanding.
- Contribution – There are mutual exchanges through which partners help each other by providing some of the resources and support needed to reach their independent goals.
- Coordination – There is a deliberate, joint, often formalized relationship among partners involving communication, planning and division of roles, and longer term goals.
- Cooperation – There is a defined relationship in which partners plan together, negotiate mutual roles and share resources to achieve joint goals.
- Collaboration – Partners engage in a process through which they constructively build an interdependent system which includes a common mission, comprehensive communication and planning, pooled resources, and shared risks and products.

Sonshine Preschool	Marshall County	Preschool Center	77	\$27,955	\$5,792	Local	Communication Contribution Coordination Cooperation Collaboration
West Marshall Trojan Tots	Marshall County	Tuition Scholarships Staff Support	46	\$16,968 \$4,828.62	\$31,837.05 15,321.05	Local & State	Communication Contribution Coordination Cooperation Collaboration
St Paul's Episcopal Preschool	Marshall Co.	Preschool Center	29	\$11,351.00	\$14,000	Local	Communication Contribution Coordination Cooperation Collaboration
GMG Community School	Marshall County	Transportation Preschool	39	\$5,265.91	\$79,573.00	State	Communication Contribution Coordination Cooperation Collaboration
Iowa Falls CSD	Hardin Co.	Preschool	133	Not funded	\$42,847.00	State	Communication Cooperation Collaboration
Alden CSD	Hardin Co.	Preschool	12	Not funded	\$61,210.00	State	Communication Cooperation Collaboration Coordination
East Marshall Preschool	Marshall County	Transportation Preschool	61	\$15,000	\$1,084.50 \$140,783.00	Local State	Communication Contribution Coordination Cooperation Collaboration

Sue Junge: Early Childhood Specialist <i>*funded by IRVECA</i>	Marshall County	Preschool Center and Child Care Center Support, Quality Programming	292	\$27,789.00	No other funds	No other funds	Communication Contribution Coordination Cooperation Collaboration
Christian Edu-Care	Hardin County	Preschool Center	78	\$12,396.00	\$2,039.00	Local	Communication Contribution Coordination Cooperation Collaboration
Cougar's Den/AGWSR	Hardin County	Preschool Center	64	\$2,484	\$492.00 \$82,634.00	Local State	Communication Contribution Coordination Cooperation Collaboration
Good Shepherd Preschool	Hardin County	Preschool Center	47	\$5,868.40	\$1,274.00	Local	Communication Contribution Coordination Cooperation Collaboration
Hubbard Radcliffe Preschool	Hardin County	Preschool Center	48	\$3,262.50	\$337.50 \$70,392.00	Local State	Communication Contribution Coordination Cooperation Collaboration
Marshalltown Community School District	Marshall Co.	Preschool	226	Not funded	\$222,097.01 \$655,008	State	Collaboration
Riverbend Child Care	Hardin County	Child Care Center	66 families	Not funded	\$180,000	Federal State Local Private	Communication Cooperation Collaboration Coordination

Eldora Children's Center	Hardin County	Child Care Center	Not reported	Not funded	\$116,299.00	State	Communication Cooperation Collaboration Coordination
Child Care Resource & Referral/Orchard Place	Hardin & Marshall Co.	Child Care Consultant Training	50 Service Providers Participating	\$39,652.44 \$7,033.76	\$16,563.46 \$7,123.76	State	Communication Contribution Coordination Cooperation Collaboration

Agencies & Programs Collaborating with IRVECA
Outside Funds Were Not Reported or Could Not Identified

Agency/Organization	Location	Type of Service	# of Children 0-5 Served	Level of Collaboration
Bright Beginnings	Marshall Co.	Child Care Center	75	Communication Coordination Cooperation Collaboration
Elim Children's Center	Marshall Co.	Child Care Center	65	Communication Coordination Cooperation Collaboration
Hansen Family Hospital	Hardin Co.	Behavioral Health Service Birthing Center	Ages 4-18 75 families	Communication Coordination Cooperation Collaboration
Marshall County Public Health	Marshall Co.	Public Health Agency	Unknown	Communication Coordination Cooperation Collaboration
St Francis Preschool	Marshall Co.	Preschool	100	Communication Coordination Cooperation Collaboration
Marshalltown YWMC-YMCA	Marshall Co.	Preschool	110	Communication Coordination Cooperation Collaboration
The Tiger's Den	Hardin Co.	Child Care Center	37	Communication Coordination Cooperation Collaboration

Center Associates	Hardin & Marshall Co.	Outpatient therapy and counseling services, evaluation services, emergency services.	102	Communication Coordination Cooperation Collaboration
Central Iowa Family Planning	Hardin & Marshall Co.	Family planning clinic providing affordable, comprehensive, confidential family planning services, education and reproductive health care to clients	Unknown	Communication Coordination Cooperation Collaboration
AEA-267/Early Access	Hardin Co. & Marshall Co.	Support in the areas of quality instructional materials, curriculum planning, best practices in teaching and learning, safe and caring learning environment, appropriate educational opportunities for all learners, technology planning, professional learning, assessment, special education, and leadership development,	Unknown	Communication Coordination Cooperation Collaboration
Youth and Shelter Services	Hardin & Marshall Co.	Community and home-based services to children	35 families	Communication Coordination Cooperation Collaboration
Quakerdale	Hardin & Marshall Co.	Christian organization that joins youth and families with communities through prevention and education.	10 families	Communication Coordination Cooperation Collaboration
Achieve Mental Health	Hardin Co.	Mental Health Therapy	50 families	Communication Coordination Cooperation Collaboration

Section V: Community Collaboration

Collaborative and Networking Opportunities

The Iowa River Valley Early Childhood Area Board has identified collaboration and networking as a strategy for forward progress. Collaboration and networking is an expectation for board members, staff, and contracted programs. It is also a strong belief that collaboration and networking builds greater public awareness for our Early Childhood Area. The Board strives to be the forefront of Early Childhood Community Collaborations by facilitating or participating in the following collaborative efforts:

Facilitation

Marshall County Early Childhood Committee

Participants from several programs/agencies come together to discuss issues that affect the families and children in Marshall County. This group also shares information regarding their programs so everyone is aware of what resources are available and to avoid duplication of services. The group has been diligently working on a mental health system for young children. Positive Behavior Interventions and Supports (PBIS) specialists have trained staff in all the child care centers and preschools in Marshalltown and have begun the implementation process. The Marshall County Early Childhood Committee has seen positive results and with the help of PBIS coaches, and should have full implementation within the next 3 years. They have also started the conversations regarding how children can be better prepared when they enter school. Representatives from the Read by 3rd initiative have assisted in the development of specific activities that will enhance skills that were recommended by Kindergarten teachers. Children who have these skills are better prepared for school and do better once they start Kindergarten.

Participants include representatives from AEA, Early Access, Head Start and Early Head Start, Child Abuse Prevention Services, Child Care Resource and Referral, Iowa River Valley Early Childhood Area, Mid-Iowa Community Action, Public Health, 1st Five Referral Program, The Public Library, child care center directors, and members from the business community and local foundations. The committee meets ten times during the year in an effort to initiate new ideas, discuss how to fill needs in the community, and how their programs can partner to meet those needs.

Hardin County Early Childhood Committee

Comprised of Early Childhood Iowa Area Providers and Board Members in Hardin County, the Early Childhood Committee serves three main purposes. Through *community outreach*, the committee has generated and participated in Week of the Young Child events, Family Fest, Trick Or Treat Stroll participation and provider appreciation. The committee also meets regularly to discuss needs and/or issues that are facing local citizens, which is then reported back to the Iowa River Valley Early Childhood Area Board to *raise awareness*. Lastly, *networking* plays a vital role as programs and board members share ideas for best practice, changes in operation, and promotion of upcoming events for their program. Members include, but are not limited to, representatives from preschools, school administrators, public health, Department of Human Services, mental health, Child Care Resource and Referral, Mid-Iowa Community Action, and 1st Five.

Family Referral Network for Hardin & Marshall County

Early Childhood Iowa State Board Tool FF requires local Family Support programs to implement a Coordinated Intake system. A committee of dedicated Family Support and Public Health professionals from differing agencies have come together to build the Family Referral Network for Hardin & Marshall County. System building support is provided by the Early Childhood Iowa Area Director. Through evaluation, the committee has discovered that referrals are currently happening in an effective manner, but the referral network will provide a more formal process and be able to track a family's connection to services. Continued communication and planning is key.

Hardin County Circle of Life

Known as an, "Inter-agency collaboration that **empowers** Hardin County residents to live a higher quality of life." The group consists of more than 40 different volunteer members that serve residents of all ages in Hardin County. They collaboratively share agency happenings and discuss issues facing residents. They also host Family Fest and a Senior Fair. Our Early Childhood Iowa Area Director serves as the coordinator for the group. Hardin County Circle of Life has doubled its growth in recent years.

Champions for Children (Director's Networking Group)

The Early Childhood Support Specialist (ECSS) from the Iowa River Valley Early Childhood Area Board and area preschool teachers, staff, and administration formed a group to network and support each other in early childhood related topics. The Early Childhood Iowa Director, Consultants from Child Care Resource and Referral (CCR&R), and School Readiness Coordinator also play an integral part in this group by providing support and information on several related issues. The ECSS facilitates the discussions and provides information on topics that the group would like to learn more about. They also offer ideas and suggestions to each other on assessments, developing their playgrounds and environments, needs of families and young children in the community, motivating staff/employees, finding qualified substitutes, fundraising activities, TEACH, etc. The group sets goals at the first meeting and tries to meet five times during the school year.

Marshall County Reach Out and Read (ROR)

The Marshall County ROR Program makes literacy promotion a standard part of pediatric primary care so that children grow up with books and a love of reading. ROR trains doctors and nurses to advise parents about the importance of reading aloud and distributes books to children at pediatric check-ups from six months to five years of age, with a special focus on children growing up in poverty. Marshall County currently has six clinics participating in the program. Over thirty doctors and staff have been trained to provide books to children and offer guidance to parents on the importance of reading aloud to their children. Over 3,600 books were given out in 2013 to children during their well-child exams, starting at two months and continuing until age five. Many area clubs, organizations and schools have made major contributions to this program to assure its' sustainability now and in the future. Several community members from different sectors oversee the ordering of books, distribution of books, and reporting to the national ROR center every six months. Recently, a Reach Out and Read Board was created to better serve the needs of the children which includes many from the business community, parents, grandparents, clinic staff, and those who are interested in meeting the literacy needs of young children.

Hardin County Reach Out and Read (ROR)

The Hardin County ROR Program was established in 2013 and is led by a committee which includes: community members, teachers, librarians and physicians. In just 12 months, they were able to raise over \$7,500 to purchase books and materials. They have modeled their initiative after the Marshall County Reach Out and Read. Over fifteen doctors and staff are trained to provide books to children and offer guidance to parents on the importance of reading aloud to their children. Over 950 books were given out in their first distribution to three different clinics in April of 2014.

Participation

Toddlers and Two's

Toddlers and Two's parent support program originated due to a need that was expressed at a Marshall County Early Childhood Committee meeting. Parents of very young children had been requesting a group where they could meet other parents and learn more about their child(ren). The Marshalltown Library, the Early Childhood Support Specialist (ECCS - IRVECA), and a representative from Building Healthy Families established "Baby Time"; for parents of newborns to about age 2. Since the library was providing space for the program, educating parents regarding early literacy was also introduced. At the time, there was also a growing need for children who graduated to the "toddler" stage but weren't quite ready for "Story Time," thus the creation of Toddlers and Two's (which has replaced "Baby Time"). Parents and their young children (up till age 3) attend once a week for a great socialization opportunity. The librarian also reads a book, provides early literacy tips, and incorporates songs and finger plays into the activities. Each year, four sessions of six weeks are held. Strong support of the program has led to offering two sessions each week to meet the demands of those who want to attend. The ECCS also provides opportunities for parents by providing information and guidance related to this specific age group. Parents have formed friendships and often have private play dates outside of the group. The librarian also offers special events such as a "Trick or Treat" Day or Zoo Day where the Blank Park Zoo brings in animals and shares information regarding specifics about each animal. This has become one of the most successful parent support groups in the area.

Read By 3rd

The Read By 3rd project was created to improve the outcomes of children in the Rogers Elementary School neighborhood and has now extended into the community. This started as a neighborhood-based project located in the Rogers Elementary attendance zone. It was created to ensure all children start school ready to learn, continue learning throughout the years, and provide parents with the tools and knowledge they need to support their child's education. Read By 3rd has three major components: School Readiness, Summer Learning Loss, and Attendance. Committees for each have been formed for each of the components and these groups work throughout the year to ensure children are ready for school, attendance is acknowledged and parents understand the importance of their children regular attendance, and creating summer programs so children do not experience a learning loss during this time. One of their major goals is to increase the number of children reading proficiently in 3rd grade to 90% by the year 2016. Critical area goals for 2016 are: 85 percent of children entering kindergarten will be "ready"; the number of summer learning opportunities that meet the recommended nine elements of quality summer learning programs will be doubled; and average daily attendance will be maintained at or above 95 percent while reducing chronic absences by 50 percent. Several community members and staff from several early childhood programs are involved and have created "community awareness" as to the importance of acquired skills by 3rd grade. The committees have established yearly goals at this time and welcome all who would like to participate in any or all of these groups.

DECAT

Decategorization of child welfare and juvenile justice funding is an initiative intended to establish systems of delivering human services based upon client needs to replace systems based upon a multitude of categorical funding programs and funding sources, each with different service definitions and eligibility requirements. Decategorization is designed to redirect child welfare and juvenile justice funding to services which are more preventive, family centered, and community-based in order to reduce use of restrictive approaches that rely on institutional, out-of-home, and out-of-community care. The Hardin and Marshall DECAT Board is recognized as a valuable partner to ensure continuity of services. Directors for both the DECAT and IRVECA Boards are in constant communication when assessing needs and connecting to collaborative partners.

Child Abuse Prevention

Child Abuse Prevention Services is a private, non-profit organization whose mission is to prevent child abuse in Marshall County and the surrounding area. The agency's goals are to increase parent knowledge of child development and improve parenting practices; provide early detection of developmental delays and health issues; provide family support so parents are more confident in their parenting role; empower children to recognize and form healthy relationships; eliminate children living in unsafe, drug endangered environments; and strengthen the community so they will engage in supporting the well-being of children. Programs and services include: Building Healthy Families; Storks Nest; Crisis Child Care; Crisis Intervention Program; Sexual Abuse Prevention Program; Adolescent Pregnancy Prevention Program. Coordinator of: Marshall County DEC Alliance; Team APP – Adolescent Pregnancy Prevention Coalition; Community Partnership for Protecting Children (CPPC); Clinical Consultation Team; Child Abuse Mandatory Reporter Training Team.

Collaborative Events

Healthy Family Fair

Each year several community agencies team up to host the Healthy Family Fair at the Marshall Town Center in Marshalltown which focuses on ages prenatal to preschool. At the event, families enjoy a variety of interactive exhibits on health, safety, parenting, and early childhood education; along with Cat in the Hat promoting early literacy, Dora and Diego, Elmo, face painting, a balloon artist entertaining the children, dancers, etc. Several local businesses and organizations offer their support in the form of monetary donations for the activities, books and door prizes. This is a great collaborative effort with as many as 30 programs and agencies partnering and up to 30+ businesses donating to the event. The Iowa River Valley Early Childhood Area Board has participated every year since 2013 by having resources, crafts and gifts for kids, books and promotional items.

Family Fest

The Hardin County Family Fest is held annually, with the ultimate goal of serving residents in Hardin County with “free food, free fun, and free resources.” Sponsored by the Iowa River Valley Early Childhood Area Board and the Hardin County Circle of Life, the event has no age limit. Family Fest continually brings in more than forty different organizations with resource booths, donations from community partners, and over 450 participants! The planning committee also consists of more than twenty partners from non-profit organizations. The Hardin County Circle of Life makes this an annual event, happening the first Saturday in May. Each family that attends receives a free Hardin County Resource Directory. The Iowa River Valley Early Childhood Area Board has participated every year since 2013 by having resources, crafts and gifts for kids, books and promotional items.

Reading Road Trips

Hosted annually, the Early Childhood Iowa Director and Early Childhood Support Specialist partner with children’s show host, Dan Wardell from Iowa Public Television to conduct a Reading Road Trip across Hardin and Marshall County. The Reading Road Trip visits preschools and child care centers in Hardin and Marshall County. Dan Wardell’s enthusiasm fosters excitement in children about reading, as he reads popular children’s books to them. Children are so happy to have a “celebrity” come visit them with one clear message, “Go home and turn off your TV. Go outside and play. Use your imagination. And read a GOOD BOOK.” Information is sent home with children about the Iowa River Valley Early Childhood Area board, and the purpose of the Reading Road Trip.

Trick or Treat Stroll

Since 2009, an annual collaboration among Hardin County organizations occurs each Halloween as bags of “goodies” and resource information are distributed to Trick-O-Treaters throughout communities. All items are donated, local youth groups assemble the bags, and then distributed by the Early Childhood Iowa Director and volunteers. Goodies sometimes include bookmarks, crayons, books, coloring books, pens, dental supplies, healthy snacks, bowling coupons and more. It is estimated that nearly 500 children benefit every year from this opportunity.

Week of the Young Child Awareness

The Week of the Young Child is an annual celebration sponsored by the National Association for the Education of Young Children (NAEYC), the world's largest early childhood association, with nearly 80,000 members and a network of over 300 local, state, and regional affiliates. The purpose of the Week of the Young Child is to focus public attention on the needs of young children and their families and to recognize the early childhood programs and services that meet those needs. In Marshall County the Early Childhood Support Specialist (ECSS) coordinates with various early childhood programs to promote the importance of those early years throughout the community. A child care center or preschool is chosen to have the mayor “proclaim” it Week of the Young Child. The ECSS also assists programs in finding different community businesses to display children's artwork throughout the county along with Week of the Young Child posters/materials. The Iowa River Valley Early Childhood Director also schedules Dan Wardell from PBS to visit many of the programs that IRVECA funds during this week as part of his Reading Road Trip . The theme for Week of the Young Child 2015 will be “Celebrating our Youngest Learners”.

Additional Supportive Services to Children in Hardin and Marshall County

AEA and Early Access

Our local AEA and Early Access programs provide services to child care providers, centers, preschools and grade schools to evaluate children when there is a concern regarding the child’s development. Once the child has been evaluated, referrals are made as to where the child could receive appropriate services and how to access these programs. AEA also provides several trainings for staff and providers including Positive Behavior Supports, Creative Curriculum, Every Child Reads, Quality Preschool Program Standards (QPPS), and Coaches training.

Drug Endangered Children (DEC)

The DEC Team was established in October 2006 to address the impact of parental substance abuse on Marshall County’s children. These children are often found to be living in deplorable conditions, neglected beyond imagination, and suffering at the hands of parents, who use, sell, and manufacture drugs. To ensure the immediate safety of drug endangered children, the Marshall County DEC protocol includes a law enforcement removal of

children for a period of up to 24 hours and placement in the Crisis Child Care Program. This protocol allows DHS workers time to locate a safe family caregiver or seek a court order for foster care. Placement in Crisis Child Care will avoid some unnecessary placements of children in foster care thus saving state dollars and time.

The DEC Team has a coordinator and is comprised of professionals from law enforcement, the Marshall County Attorney's office, The Department of Human Services, Crisis Child Care, and a physician. From July 1st, 2013 – June 30, 2014, DEC responded to 10 cases in which 17 children were removed from the homes. The DEC Team provides presentations to other agencies, service groups, and professionals to increase awareness. In addition, the team has had the pleasure of organizing an annual conference since 2012 in order to provide the community with further training on this topic and the needs of these children. This project is an exemplary example of how collaborations within the community can have successful results for children.

Quakerdale

Services are designed to assess the child and family's social, emotional and family functioning; develop a treatment plan; and provide skill building with the goal to reunite the family. Family Team Meetings support and identify what the family hopes to accomplish, set goals and time frames, assess strengths and needs to help accomplish these goals, and match services in the community to help achieve these goals. They offer Functional Family Therapy, which focuses on specific things the family feels is impacting their child, their family, their environment and how to gain skills to better manage those factors. Quakerdale also offer Children's Mental Health Waiver services, a Medicaid program for children under 18 years old with a mental health diagnosis whose parents choose to use services and individual supports to keep their children in their own home. These and many other programs are offered in Hardin and Marshall County.

Youth and Shelter Services

YSS exists to provide prevention, education, treatment, and residential services to children, youth, and families; to advocate on their behalf, and to help them solve problems, grow, and be self-sufficient, responsible, contributing members of society. They strive to help children, youth, and families uphold dignity, build assets, and achieve independence. YSS direct care services address the presenting problems of a wide range of children and youth who have experienced physical and sexual abuse, neglect, trouble with the law, emotional and mental problems, experience running away from home, homelessness, pregnant and parenting women, youth aging out of the foster care system, chemically-addicted youth, and families experiencing conflict. YSS continues to partner with the Iowa River Valley Early Childhood Area Board through participation in committees, outreach events, and coordinated intake.

Ensuring Health and Safety for ALL Children

It's been said that, "It takes a village to raise a child." This philosophy has been adopted by the Iowa River Valley Early Childhood Area Board because we recognize that not just one person or agency is responsible for promoting health and safety for our children. We rely on the work of services providers and collaborative partners to ensure:

- ◆ Infectious diseases are NOT spread
- ◆ Injuries are prevented
- ◆ Health emergency protocols are in place
- ◆ Professionals are trained in medication administration
- ◆ Children with special health care needs are cared for

When we polled service providers and collaborative partners on how they ensure these children are being cared for, the following responses were received:

Describe how your agency helps prevent the spread of infectious diseases and child injuries:

- ◆ We will send a child home that has an infectious disease so they will not spread it to other children. We have "rules" and procedures to keep children safe - walk, no standing on tables, only slide down a slide, etc.
- ◆ Staff receive flu shots, provide information on flu shots, cleanliness, and immunizations.
- ◆ Provide education and work with families and doctors for wrap around care.
- ◆ Provide immunizations and reporting to IRIS.

- ◆ Educating parents and providers by offering training, technical assistance and consultation.
- ◆ We monitor immunizations through collaboration with staffed nurses.
- ◆ Hand washing and talking with children and families frequently about the spread of germs
- ◆ We clean the facility daily, toys are cleaned weekly (unless put in mouth-then daily), and post illnesses. We monitor play areas and remind children to play safely.
- ◆ Safety is number one priority. Children may not attend if sick. Staff are trained in universal precautions and teach children how to keep germs away.
- ◆ We follow Universal Precautions guidance.
- ◆ Offer immunizations beginning at birth for baby.
- ◆ Educate family members the need for hand washing, immunizations, and other preventative measures to help the spread of disease.
- ◆ Verify immune status of mother while she is a patient and immunize as needed.

Describe how your agency cares for children with special health needs:

- ◆ We follow parent-requested food restrictions such as for a diabetic child or a child with allergies. We do not administer medications.
- ◆ We address mental health services and this can involve helping children and families cope with special health needs.
- ◆ We have medical support and referrals to supporting agencies and services
- ◆ They are included when visiting programs regarding social/emotional education.
- ◆ Training, consolation and technical assistance is available to support child care programs in serving children with special needs.
- ◆ Information and resources including referrals are available to families looking for child care, communities and employers.
- ◆ Request Care Plans from the family to assure we are aware of the needs and specific instructions given by the health care provider.
- ◆ Head Start and Early Head Start, 1st Five Care Coordinators,
- ◆ Assessments and therapy.
- ◆ Work with AEA267 if we have a student with special needs.
- ◆ Through public health services grant to those who qualify

Describe how your agency implements health emergency protocols:

- ◆ Assess the situation, call 911 if needed, and contact the director. Emergency procedures are reviewed annually with the staff.
- ◆ This is addressed by the physicians' clinics and hospital.
- ◆ We have a policy on pandemic flu, table top drills, and trainings.
- ◆ We conduct drill health emergencies several times a year We can be ready and set up in under an hour anywhere in the county. We also so all communicable disease surveillance in the county and report/collaborate with IDPH.
- ◆ Educating providers and working with DHS.
- ◆ Consultation and Technical Assistance to assist program's in developing emergency plans.
- ◆ Emergency Preparedness Training.
- ◆ We have all been trained in the administration of Epi-pens, CPR and First aid. We have also completed Universal Precautions Training.
- ◆ Contact parent, hospital if necessary, and make all parents aware of the health emergency.
- ◆ We do monthly drills for tornado and fire. All staff are oriented about all protocols when hired and during training.

Describe how your agency assists with medication administration:

- ◆ We offer prescriptions and we do routine intramuscular injections for mental health/mental illness care.
- ◆ We set medi-planners, monitor care taker dispensing, and follow drug regimen review with doctor.
- ◆ Education and training is offered.

- ◆ Certain staff are trained in procedures per licensing requirements.
- ◆ Staff is certified in Universal Precautions, CPR and First Aid, should more education be needed we would attend/acquire the appropriate training.
- ◆ Some staff are CMA's. All staff are oriented on how to administer the medication and proper documentation.
- ◆ Medication administration per providers order.
- ◆ We have a lock box for medicine if needed. We have posted directions for administration of medicine and documenting it.

Additional Community Organizations and Business Partners

Does not include currently funded program or previously mentioned partners

Iowa State University Extension
 Area-wide Public Libraries
 Area-wide Parks and Recreation Departments
 McFarland Clinic
 Community YMCA
 Chamber of Commerce/Economic Development
 Martha Ellen Tye Foundation
 Iowa Valley Leadership Group
 Marshalltown Community College (MCC)
 WIC and Maternal Child Health
 Lead Poison Prevention Program
 Center Associates
 Department of Human Services
 Social Service Clubs - Lions on vision screenings
 Legal Aide
 Child Support Recovery Group
 Marshalltown,
 YWCA Preschool
 Trojan Tots Preschool and At Risk Preschool Program
 UnitedHealthcare

Marshalltown Medical and Surgical Center
 Primary Health
 Marshall County Child Care Services
 Elim Child Care Center
 MACS (Marshalltown Area Catholic Schools) Child
 Care Center
 Freedom House
 Hansen Family Hospital
 State Farm Insurance
 Campbell Supply Company
 Iowa Valley Continuing Education
 Ellsworth Community College
 Board of Supervisors
 Community Foundation
 PlaMor Bowl
 Green Belt Bank
 Great Western Bank
 Chamber Mainstreet and Economic Development
 Region 6 Planning Commission
 Life at Home, LLC

Section VI: Review and Evaluation

Evaluation of the Community Plan

The Iowa River Valley Early Childhood Area Board will review the Community Plan before the Request for Proposal process is released, to ensure the most current needs are addressed and to align funding decisions with state and local defined priorities. In the event that funds would become available, the Iowa River Valley Early Childhood Area Board may conduct an independent assessment to determine additional needs. Key factors that may trigger a change in the Community Plan may include, but are not limited to: changes in funding, legislation, results from independent assessments, feedback from providers and programs, and discussions with community partners.

Evaluation of Funded Programs

As a part of an on-going process to monitor our programs, the Iowa River Early Childhood Area board will require funded projects to adhere to the following:

- ◆ Submission monthly vouchers, with detailed receipts for appropriate expenditures.
- ◆ Policies set forth in an annual Iowa River Valley Early Childhood Area Provider Guide.
- ◆ At the request of the board, be required to provide oral reports.
- ◆ Submit (as determined by their contract) mid-year and year- end report to include narrative summaries and performance measures. Reports will be shared with the board for open discussion.

- ◆ Be subject to site visits between the program, program administrator, a board member and the ECI Director at mid-year which may include (but not limited to) a facility tour, program survey, fiscal review, and file review.
- ◆ Provide a summary of audit findings, if applicable.
- ◆ Provide a proof of Liability Insurance.
- ◆ Provide evidence of evidenced based practices and efforts towards quality programming.
- ◆ Agency Director or Representative must attend at least one Iowa River Valley Early Childhood Area Board Meeting per year

Additionally, programs have the opportunity to present to the Board at a meeting, with the some of the following stipulations:

- ◆ Presentations are voluntary by the organization/service, and not a requirement of the contract.
- ◆ Limited to 5 minutes in length and will be timed. There will be opportunity for board member questions.
- ◆ Copies of supporting materials may be presented.
- ◆ Should serve as a description of services or clientele, advancements in quality and assist the board in identifying needs.
- ◆ Presentations have no financial bearing on contract awards.

Evaluation of the Board

The board will utilize the guidance set forth in State ECI Tools F & AA to establish an evaluation of their functioning, to be completed by Board members, Service Providers and the Public and presented at an annual Board meeting. Two types of evaluations exist currently: Board member self-evaluation and a community evaluation. The Board may elect to produce or revise an action plan to increase functioning or look for board development opportunities.

The Board Administration Committee is responsible for the following:

- Creation and distribution of Evaluation Tools.
- Tabulating the answers from the conducted evaluations.
- Presenting a summary to the entire board.
- Using results for the development of the Board Professional Development plan, and seeing that it is followed.

Future Plans for Iowa River Valley Early Childhood Area

This Iowa River Valley Early Childhood Area Community Plan is a living, breathing document that serves as a resource, map and guide for board members, providers, early childhood stakeholders and every citizen of Hardin and Marshall County. The Iowa River Valley Early Childhood Area Board has utilized input from a variety of sources and viewpoints in developing a comprehensive plan to address the early childhood needs.

We continue to be a link for continuing collaboration between various groups and agencies by providing resources to those entities that are focused on addressing the needs of the early childhood population.

This Iowa River Valley Early Childhood Area Community Plan is intended to be a three-year plan that outlines our efforts toward evolving a community climate that continues to increase awareness and support of early childhood well-being. However, unlike a map that needs to only be updated infrequently, our efforts will be subject to continuing evaluations to continue to reflect the ever-changing needs of its clientele and collaborative partners. Though funding decreases have and will occur in the next few years, partnerships with businesses will be critical in meeting these needs, as well as searching out additional funding sources, such as grants and contributions from local civic groups. We will continue to keep the interests/needs of young children and their families a top priority. By collaborating with all our partners in the community, we hope to create an early childhood system that will:

- ◆ Give ALL children access to quality child care and preschools for later success
- ◆ Keep children safe and secure in their homes, schools, and child care.
- ◆ Offer parent trainings and information.

- ◆ Provide access to mental health consultation for providers and parents.
- ◆ Assist in meeting the educational needs of child care providers and teachers
- ◆ Provide assistance to families in finding health care.

Resource Directories

The Iowa River Valley Early Childhood Area Board will continue to utilize and promote Resource Directories located in both Hard and Marshall County. Currently, our ECI Director is charged with updating and producing the Hardin County Resource Directory on an annual basis. Members of the general public can we request them at the following locations:

Hardin County	Marshall County
Contact: Darwin Miller, ISU Extension 524 Lawler, Iowa Falls, IA 50126 641-648-4850 or darwinm@iastate.edu http://iowarivervalleyeca.com/Resources.html	Contact: Allison Vaughn, Mid-Iowa Community Action 1001 South 18th Avenue, Marshalltown, IA 50158 641-752-7162 Ext 108 or avaughn@micaonline.org Contact: Jana Enfield, Marshall & Hardin, CPPC 811 E. Main St., Marshalltown, IA 50158 641-752-1730 or jana@capsonline.us *This directory is specific to family resources

References & Resources

The following resources were used in the development of the Community Plan.

http://www.co.hardin.ia.us/pages/About_Hardin_County
www.recap.iastate.edu
http://en.wikipedia.org/wiki/Marshall_County,_Iowa
<http://iwin.iwd.state.ia.us/pubs/etables/unemploymentrates.pdf>
<http://www.iowaccrr.org>
<http://www.capsonline.us/about/>
<http://www.idph.state.ia.us>
<http://datacenter.kidscount.org>
<http://www.earlychildhoodiowa.org>
<http://quickfacts.census.gov>
<http://2010.census.gov/2010census/>
<http://factfinder.census.gov>
http://en.wikipedia.org/wiki/Hardin_County,_Iowa
<http://www.iowaschoolprofiles.com>
<http://educateiowa.gov/>