

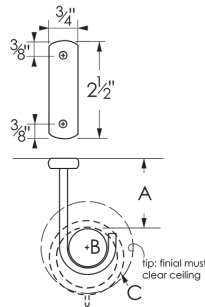
custom steel brackets – made to your specifications

BL4, custom steel ceiling mount bracket

please specify:

- A. drop (distance from ceiling to top of pole)
- B. pole size and profile
- C. rings to be used, if any

*note: minimum drop is contingent upon which finial and ring is chosen
2½"W ceiling plate comes standard, unless otherwise specified*

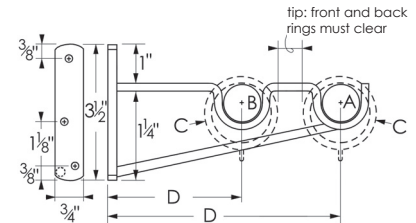


DBL1, custom steel double bracket

please specify:

- A. front pole size and profile
- B. back pole size and profile
- C. outside diameter of rings to be used
- D. front and back returns (distance from wall to center of cradle)

*note: returns are contingent upon which poles and rings are chosen
3½"H backplate comes standard, unless otherwise specified*

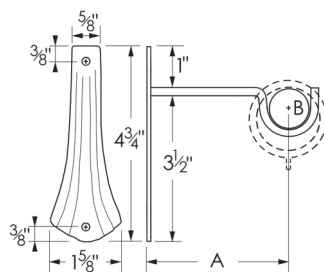


FBKT, custom steel single bracket

please specify:

- A. return (distance from wall to center of cradle)
- B. pole size and profile

note: 4¾"H backplate may not be modified

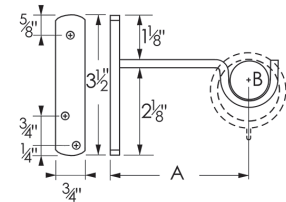


TBKT, custom steel T-bracket

please specify:

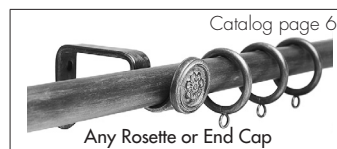
- A. return (distance from wall to center of cradle)
- B. pole size and profile

note: 3½"H backplate comes standard, unless otherwise specified



Options:

- For a custom bracket with return or drop distance in excess of 8", add the following custom bracket modification fee. (Includes a recommended support arm.)
- To modify an existing Standard Bracket, add a Standard Bracket Modification fee.
- Support bars can be added to existing Standard Brackets, add the following fee.



Any rosette or end cap can be added to any wood or steel bracket. Rosettes and end caps sold separately.

When ordering your bracket, please specify addition of rosette or end cap and the following:

1. rosette medallion or end cap to be added, sold separately
2. attachment method:
 - drill and tap: **additional fee**
 - or
 - spot weld: **additional fee** (for steel rosettes and steel end caps on steel brackets only)