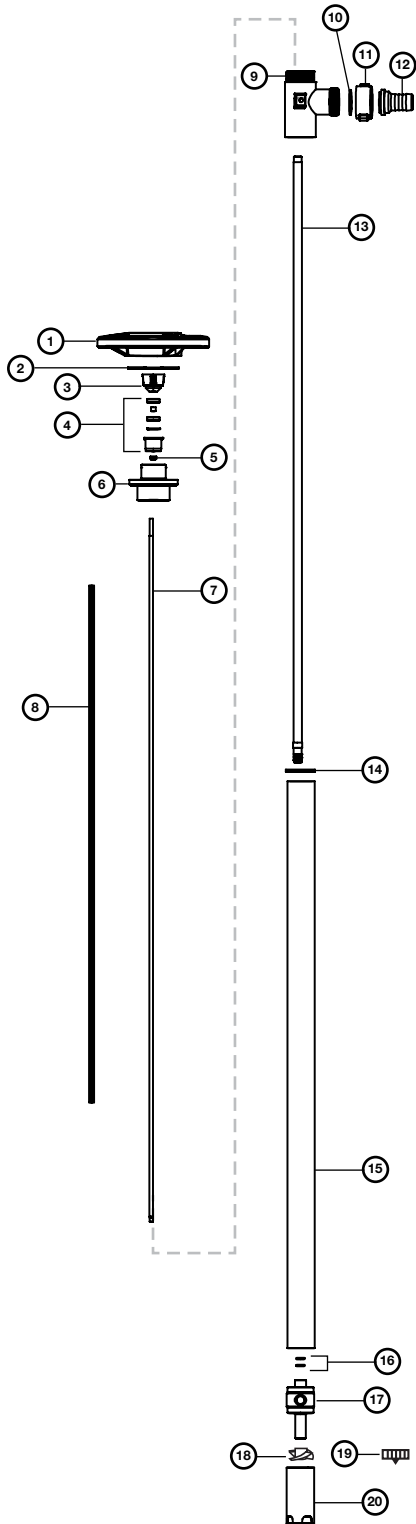


Industrial Drum Pumps Model: SP-AL



SP-AL Spare Parts List



Ref. Number	Description	P/N for SP-AL	Qty
1	Hand Wheel, Polypropylene	1842	1
2	Snap Ring, Steel	1508	1
3	Pump Coupling, Nylon	1004*	1
4	Bearing Unit Assembled - 2 each Viton® Shielded Bearings, Spacer, Snap Ring, Bearing Can	1038*	1
5	V-Seal, PTFE	4000	1
6	Connection Flange, Aluminum	3723	1
7	Drive Shaft, SS316		
	27" (700 mm)	2027	1
	39" (1000 mm)	2028	1
	47" (1200 mm)	2029	1
	60" (1500 mm)	2709	1
	72" (1800 mm)	2710	1
8	Guide Sleeve, PTFE		
	27" (700 mm)	2031	1
	39" (1000 mm) / 47" (1200 mm)	2032	1
	60" (1500 mm)	2711	1
	72" (1800 mm)	2712	1
9	Discharge Housing, Aluminum	3724	1
10	Seal, PTFE	2195*	1
11	Wing Nut, Aluminum	3709	1
12	Hose Barb, Aluminum		
	.75" (19 mm)	3708	1
	1" (25 mm)	3707	1
13	Inner Tube, Aluminum		
	27" (700 mm)	3712	1
	39" (1000 mm)	3714	1
	47" (1200 mm)	3716	1
	60" (1500 mm)	3718	1
	72" (1800 mm)	3720	1
14	Seal, PTFE	730	1
15	Outer Tube, Aluminum		
	27" (700 mm)	3713	1
	39" (1000 mm)	3715	1
	47" (1200 mm)	3717	1
	60" (1500 mm)	3719	1
	72" (1800 mm)	3721	1
16	O-Ring, Viton (2 per set)	2707	1
17	Pump Housing, Aluminum	3725*	1
	(Includes Carbon Bushing)		
18	High Volume Impeller, PTFE	2706*	1
19	High Pressure Impeller, PTFE	4608HH	1
20	High Volume Pump Foot, Aluminum	3726	1
	High Pressure Pump Foot, Aluminum	3726HH	1
21	Repair Kit (*Includes Items 3,4,10,17 & 18)	9057	1



When pumping flammables or combustible liquids, this pump must be used in conjunction with an explosion proof motor.