

DUE ON THIS LAND HAVE BEEN PAID.

OWNER

DATE

*6/22/09*

MATERIAL ARE CORRECTLY SHOWN, AND THAT ALL ENGINEERING REQUIREMENTS OF THE ROCKDALE COUNTY SUBDIVISION ORDINANCE HAVE BEEN FULLY COMPLIED WITH.

GA. R.L.S. NO. 1757

*29 JUL 6-23-04*

CHAIRMAN

DATE

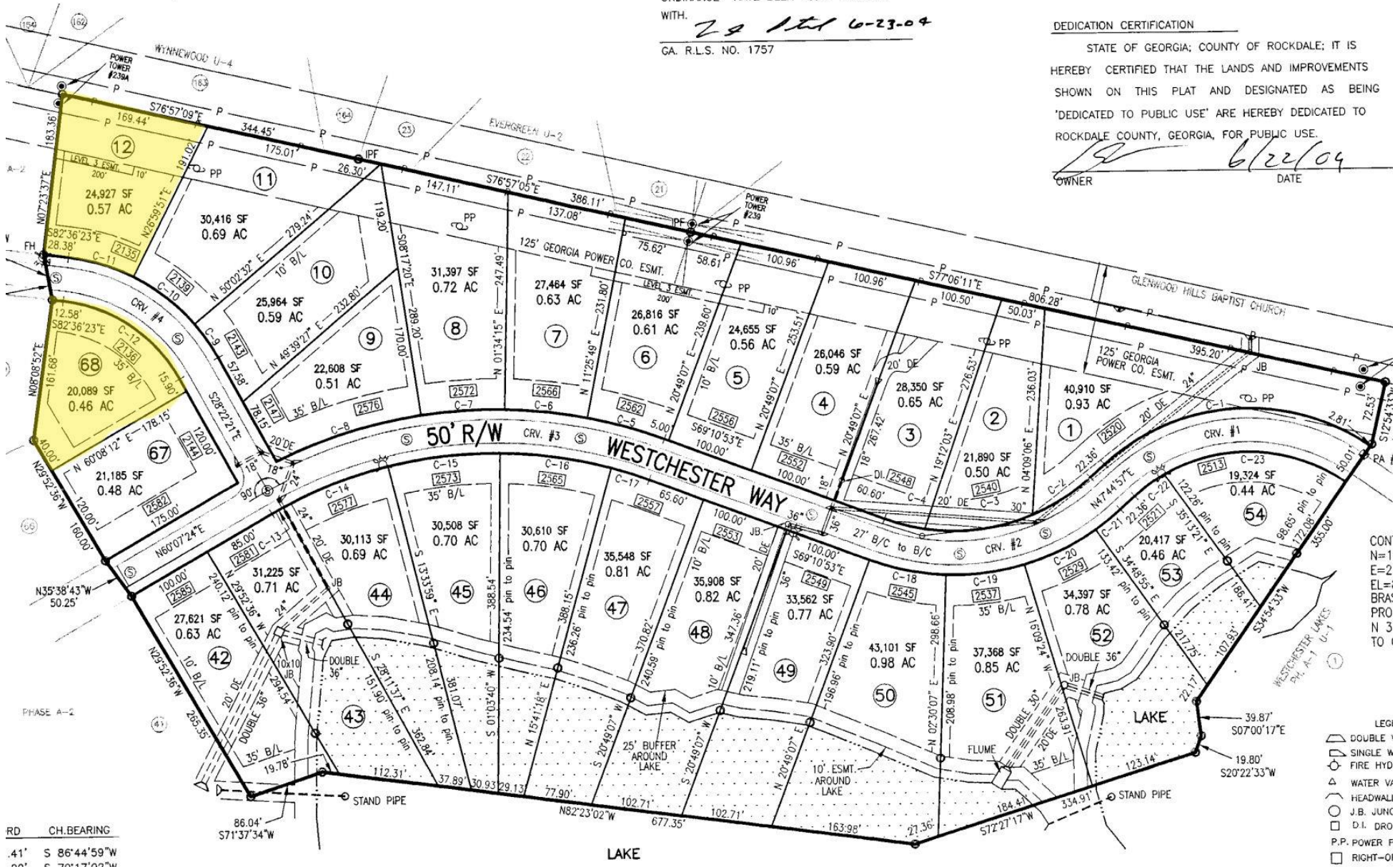
DEDICATION CERTIFICATION

STATE OF GEORGIA; COUNTY OF ROCKDALE; IT IS HEREBY CERTIFIED THAT THE LANDS AND IMPROVEMENTS SHOWN ON THIS PLAT AND DESIGNATED AS BEING 'DEDICATED TO PUBLIC USE' ARE HEREBY DEDICATED TO ROCKDALE COUNTY, GEORGIA, FOR PUBLIC USE.

OWNER

DATE

*6/22/09*



RD	CH. BEARING
.41'	S 86°44'59"W
.20'	S 70°17'02"W

CON  
N=1  
E=2  
EL=I  
BR=I  
PRO  
N 3  
TO 1

- LEG
- DOUBLE 1
  - SINGLE W
  - FIRE HYD
  - WATER V
  - HEADWALL
  - J.B. JUNK
  - D.I. DRO
  - P.P. POWER F
  - RIGHT-OI