

# 61st Annual LITCHFIELD WATERCADE CELEBRATION

## July 6-9, 2017



### THURSDAY, JUNE 1

**WATERCADE BRAT & HOT DOG FEED** CENTRAL PARK  
4:30 - 7 P.M. *Sponsored by Econofoods.*

**"INFLATABLES"** CENTRAL PARK 5 - 7 P.M.

### MONDAY, JUNE 12

**CAR WASH WITH THE CANDIDATES** Free will donations accepted ECONOFOODS -PARKING LOT 11 A.M. - 3 P.M.

### MONDAY, JULY 3

**MEDALLION HUNT** *Sponsored by KLFD and Litchfield Independent Review.*

### WEDNESDAY, JULY 5

**PRINCE & PRINCESS FOR A DAY** HIGH SCHOOL CAFETERIA AND LITTLE THEATRE at 5 p.m. Registration forms at Community Ed. *Sponsored by Schlauderaff Implement.*

### THURSDAY, JULY 6

**4-6 P.M. CENTER BANK BRAT FEED** Brats and music in Center Bank's parking lot.

**6 P.M. ICE CREAM IN THE PARK** CENTRAL PARK  
Meeker County American Dairy Association will serve (Real Dairy) Kemps ice cream.

**6 P.M. WATERCADE IDOL** CENTRAL PARK  
Registration forms at Community Ed. *Sponsored by Mid Minnesota Music and Jam Shack Entertainment.*

### FRIDAY, JULY 7

**6:30 A.M. - 12:30 P.M. KIWANIS CLUB PANCAKE and SAUSAGE BREAKFAST** CENTRAL PARK.

**4:00 P.M. ROTARY BRAT & HAMBURGER FEED** RIPLEY MEMORIAL PARK.

**SAND SCULPTURE** Registration 4:30. Building 5-6 p.m.  
LAKE RIPLEY BEACH *Sponsored by Central Counties Cooperative.*

**4:30-7:30 P.M. LAKE RIPLEY CEMETERY TOURS** For driving tour enter from the west. Tour starts at the monument. Free will donations accepted.

**5:00 P.M. TENNIS TOURNAMENT** HIGH SCHOOL TENNIS COURTS. Pre-register at Community Ed.

**6-9 P.M. BEACH PARTY** LAKE RIPLEY BEACH Lots of fun, dancing and prizes. *Sponsored by KLFD AM1410/FM 95.9.*

**6:00 P.M. LFD. RESCUE SQUAD & FIRE DEPARTMENT WATERBALL FIGHT** - RESCUE HALL/FIRE HALL.

**DUSK - FIREWORKS** LAKE RIPLEY MEMORIAL PARK  
Music provided by 94.1 the Loon. *Sponsored by First District Association, Home State Bank, Tech Etch, Agri-Systems/Systems West, Walmart, Bolton & Menk, Inc.*

### SATURDAY, JULY 8

**6:15 A.M. REGISTRATION FOR FISHING CONTEST** WEST RIPLEY PARK. 40 boat limit. Contest starts at 8 a.m. *Sponsored by Parts City Auto Parts.*

**6:30 - 7:15 A.M. REGISTRATION FOR LAKE RIPLEY 4-MILE RUN - RUN BEGINS AT 7:30 A.M.** RIPLEY MEMORIAL PARK. *Sponsored by Zach Rogness, Realtor, Meeker Memorial Hospital.*

**6:30 - 8:15 A.M. REGISTRATION FOR KIDS 1-MILE RUN** RIPLEY MEMORIAL PARK -RUN BEGINS AT 8:30 A.M. *Sponsored by Zach Rogness, Realtor.*

**8 A.M. TENNIS TOURNAMENT** HIGH SCHOOL.

**8 A.M. 6TH ANNUAL LITCHFIELD FIRE DEPT. SOFTBALL TOURNAMENT** VFW FIELDS. Pre-register at Community Education. *Sponsored by Russel Blad, United Farmers Co-op, Custom Products, Heroes at VFW, Waste Management, C & L Distributing, Chad Loch and Mid Minnesota Electric, LLC.*

**8:30 A.M. - REGISTRATION FOR BIKE RIDE.** JAYCEES SHELTER/LAKE RIPLEY. Ride starts at 9 A.M. *Sponsored by Langmo Farms and Affiliated Community Medical Centers.*

**9 A.M. - 4 P.M. ART IN THE PARK** CENTRAL PARK, DOWNTOWN LITCHFIELD. *Sponsored by Conway, Deuth & Schmiesing, PLLP.*

**10 A.M. - 2 P.M. LITCHFIELD RESCUE SQUAD BEEF FEED** CENTRAL PARK.

**10:30 A.M. KIDDIE PARADE** CITY HALL EAST PARKING LOT. *Sponsored by Medicine Shoppe Pharmacy.*

**11:00 A.M. - 1:00 P.M. MILL POND JAZZ QUINTET** CENTRAL PARK. *Sponsored by Thrivent Financial.*

**1:30 P.M. LIP SYNC CONTEST** CENTRAL PARK. Registration form available at Litchfield Community Education. *Sponsored by Monarch Healthcare Management and Meeker Cooperative Electric Trust.* Sound provided by Jam Shack Entertainment.

**6 p.m. GRAND DAY PARADE**  
*Sponsored by McDonald's, Anderson Chemical, Litchfield Shriners, Heroes at VFW, Northstar Processing, Meeker Memorial Hospital.*

**8:00 P.M. WATERCADE STREET DANCE FEATURING THE GEORGIA SATELLITES, Crimson Edge and Flathead** CIVIC ARENA PARKING LOT. *Sponsored by Towmaster, Parts City Auto Parts, C&L Distributing and Farm-Rite Equipment.*

### SUNDAY, JULY 9

**8 A.M. TENNIS TOURNAMENT** HIGH SCHOOL COURTS

**8 A.M. 6TH ANNUAL LITCHFIELD FIRE DEPT. SOFTBALL TOURNAMENT** VFW FIELDS.

**11 A.M. WATERCADE GOLF TOURNAMENT** LITCHFIELD GOLF COURSE. *Sponsored by Blue Stem Wealth Partners.* Hole-in-One *sponsored by Davis Motors.*

**1 P.M. LITTLE CROW SKI TEAM** LAKE RIPLEY BEACH. *Sponsored by Center National Bank.*

**2:00 P.M. MASONS BEAN BAG TOURNAMENT** CENTRAL PARK. 1:30 P.M. SIGN UP \$40/TEAM Pre-register at goldenfleece.lodge.89@gmail.com or call Alex Hamm 320-221-0187.

**3 - 4:30 P.M. QUEEN'S BANQUET** EAGLES CLUB. *Sponsored by Litchfield Eagles.*

**7 P.M. QUEEN CORONATION** BERNIE AAKER AUDITORIUM. Admission \$5. *Sponsored by Lube-Tech Liquid Recycling and Walmart.*

**Grand Marshals**  
*John & Jo Carlson*

**Commodores**  
*Sharaya Hagen & Erika Hart*



Photo Courtesy of Erika Hart Photography

### QUEEN - HAILEY STOFFER

Parents - Judy Engelson & Larry Stoffer  
Sponsor - McDonald's of Litchfield

### PRINCESS MICHELLE OSTER

Parents  
Brenda & Rob Oster  
Sponsor  
Ramsey Printing & Design, Inc.

### PRINCESS JUSTINE MADSEN

Parents  
Jennifer & Christopher Madsen  
Sponsor  
Hicks Bus Line & Trucking, Inc.

## Meet the 2017 Queen Candidates

LITCHFIELD WATERCADE ROYALTY FLOAT SPONSORED BY CHRISTIANSON



**MADDY LARSON**  
Sponsor: Towmaster  
Parents: Michelle & Jeremy Larson



**KAYLA LIESTMAN**  
Sponsor: Kadyl  
Parents: Paulette & Jay Liestman



**BRIANNA LARSON**  
Sponsor: Ecumen of Litchfield  
Parents: Nicole & Brad Larson



**KRISTINA-MARIE CHRISTOPHERSON**  
Sponsor: Litchfield Shipping, Inc.  
Parents: Ann & Brad Cyrus



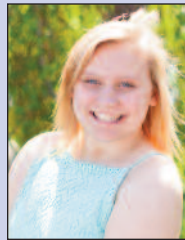
**HANNAH SCHACHERER**  
Sponsors: The Jason Tibbits State Farm Agency  
Parents: Julianna & Brent Schacherer



**MADDIE GRATES**  
Sponsor: Schlauderaff Implement Co.  
Parents: Brenda & Rick Grates



**MORGAN RANDT**  
Sponsor: Northland Body & Paint  
Parents: Kristine & Ryan Randt



**AMANDA BUCK**  
Sponsor: Langmo Farms  
Parents: Shelley & Robert Buck



**COURTNEY SMITH**  
Sponsor: Agri-Systems/Systems West  
Parents: Jennie & Dennis Smith

For complete event information visit [www.watercade.com](http://www.watercade.com)

THANKS TO OUR PLATINUM SPONSORS:



BOLTON & MENK, INC.

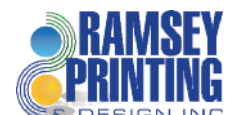
### GOLD SPONSORS:

- AMERICAN LEGION POST 104
- ANDERSON CHEMICAL
- BLUE STEM WEALTH PARTNERS
- C&L DISTRIBUTING
- CONWAY DUETH & SCHMEISING, PLLP
- EAGLES AERIE 3424
- HOME STATE BANK
- LITCHFIELD SHRINERS CLUB
- LUBE-TECH LIQUID RECYCLING
- MEEKER MEMORIAL HOSPITAL
- NORTHSTAR PROCESSING
- ZACH ROGNESS, REALTOR
- SPARBOE
- TECH-ETCH
- FARM-RITE EQUIPMENT

### SILVER SPONSORS:

- ACMC
- CENTRAL COUNTIES COOPERATIVE
- CHRISTIANSON
- CUSTOM PRODUCTS
- DR. TIM & DEB PETERSON
- FELLING TRAILERS
- LANGMO FARMS
- McDONALD'S
- MEDICINE SHOPPE
- MEEKER COOPERATIVE ELECTRIC TRUST
- MUELLER LAW FIRM
- NORTHLAND BODY & PAINT
- POLYDOME
- PRIEVE LANDSCAPING & HEWITT ROLL-A-DOCK
- SCHLAUDERAFF IMPLEMENT
- THRIVENT FINANCIAL
- STAY 'N PLAY CHILD CARE
- AGRI-SYSTEMS/SYSTEMS WEST
- THE BACKYARD SALON & TANNING
- HEROES AT THE VFW POST 2818
- DARWIN TAVERN
- MILL CITY CREDIT UNION
- KADYL, INC.

### MEDIA SPONSORS



Storm shelters located at: High School, Middle School, Courthouse, Fire Hall, Bernie Aaker Auditorium, Civic Arena.