

# CASCADE TOWERS

## West Tower Suite 330

20829 72nd Avenue South, Kent, WA 98032

Twin 8-Story Class A Office Towers with a Fountain and Central Pedestrian Promenade.



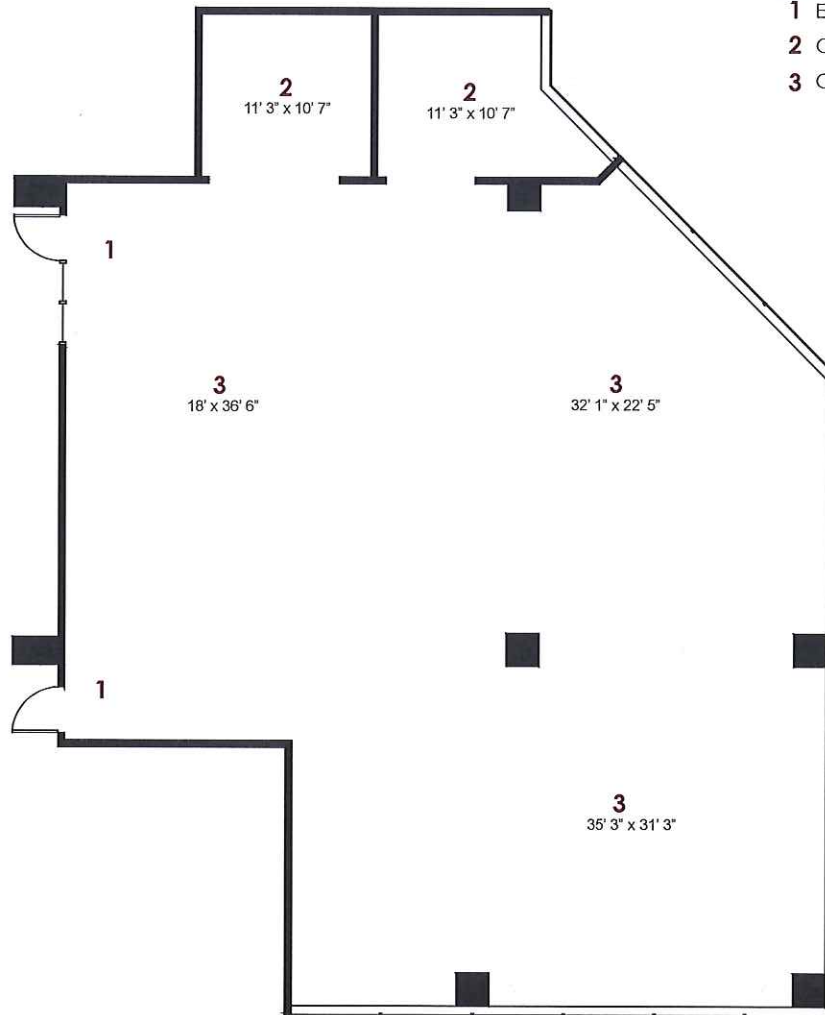
(253) 395-9226

Rob Samuels | Leasing Coordinator  
RobS@FountainheadNW.com

www.FountainheadNorthwest.com

**3,287** R.S.F

- 1 Entry
- 2 Office
- 3 Open Office Area



CREATING THE **BEST PLACE**  
FOR THE **BEST PEOPLE** TO WORK.

*Fountainhead Northwest*  
OFFICE DEVELOPMENT

The Cascade Towers at CenterPoint Corporate Park.