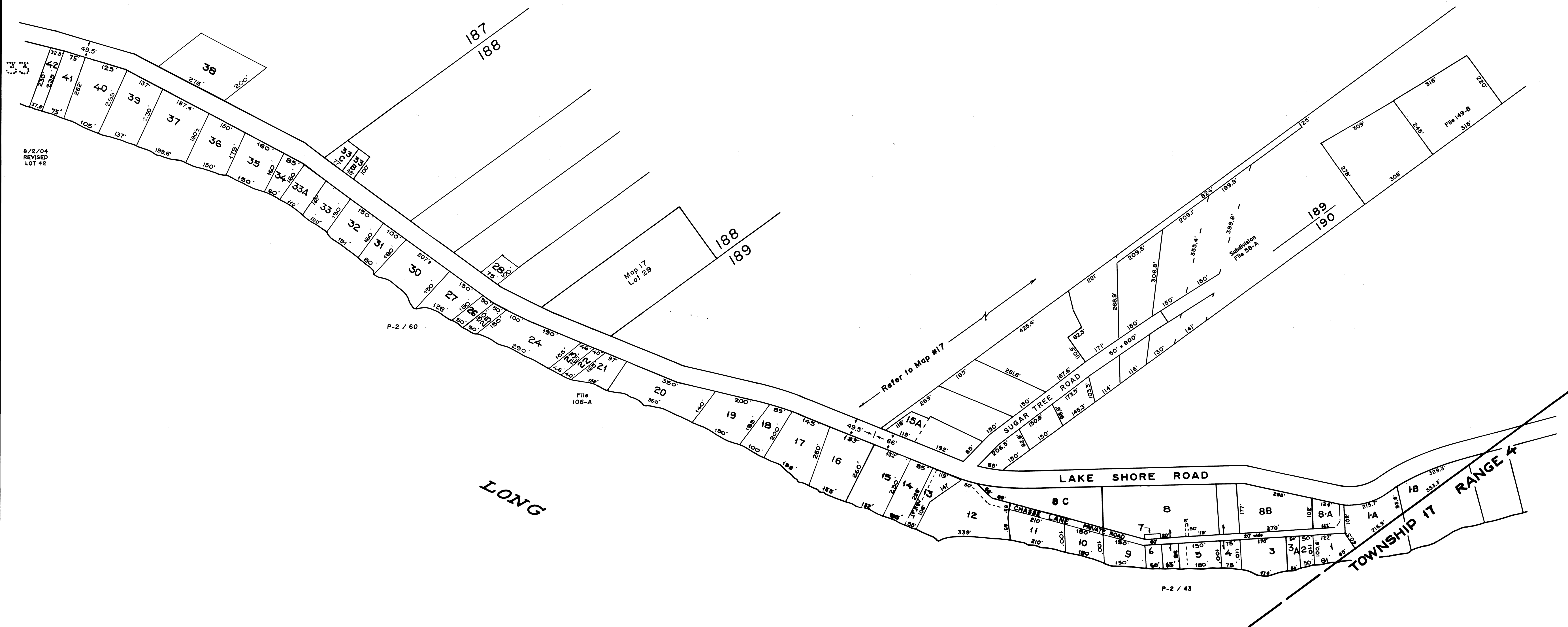


17



8/2/04  
REVISED  
LOT 42

P-2 / 60

File  
106-A

LONG  
LAKE

Refer to Map #17

LAKE SHORE ROAD

P-2 / 43

8/2/04 REVISED LOT 12  
8/17/04 REVISED LOT 12  
12/21/1993 REVISED LOTS 11 & 12

April 1, 1993  
REVISION  
by  
Matthew M. MacDonald  
BOUNDARY CONSULTANT  
Madawaska, Maine

April 1, 2015  
Up-Dated

**LEGEND**  
PARCEL NUMBERS ----- 1 For Assessment Purposes  
ADJACENT MAPS ----- 2 Not to be used for Conveyances

**PROPERTY MAP  
MADAWASKA, MAINE**  
JAMES W. SEWALL COMPANY OLD TOWN, MAINE  
SCALE 1 INCH=200 ± FEET