

Windy City Power League Site Directions

Adversity Volleyball Center

Adversity Volleyball Center is located at: 700-710 Corporate Woods Parkway, Vernon Hills, IL 60061

700 Corporate Woods Parkway, is located just west of Milwaukee Ave (Route 21) midway between Route 22 (Half Day Road) and Route 60 (Town Line Road) in Vernon Hills.

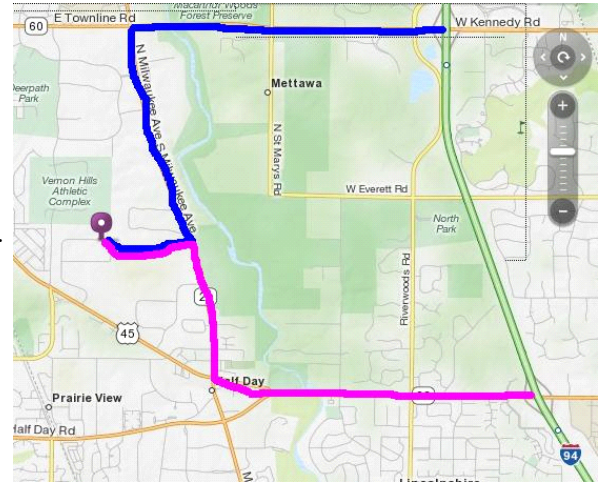
- If taking 294/94 you may exit at either 22 or 60 and head west

From the East on Half Day Road (Rte 22), make sure to turn right at **Old Half Day Road** to Milwaukee (Rte 21). On Milwaukee, you will pass Life Time Fitness at a light on the left. Corporate Woods is the next light. Turn left and go west for about 1/2 mile and turn right into the Adversity parking lot.

From the East on Town Line Rd (Rte 60), turn left on Milwaukee (Rte 21). The road will go from 3 lanes to 2 and you will then turn right at the next light (past a Smith Furniture store) go west for about 1/2 mile and turn right into the Adversity parking lot.

NOTE: Parking is available in all lots around the two buildings except for directly in front of the 730 & 740 doorways. **Parking to the north of the 730 door is reserved for those tenants.** All spots surrounding the two buildings are available. Sidewalks run along the south side of each building.

Parking is allowed on the **NORTH SIDE** of Corporate Woods Parkway only on the weekends and is signed



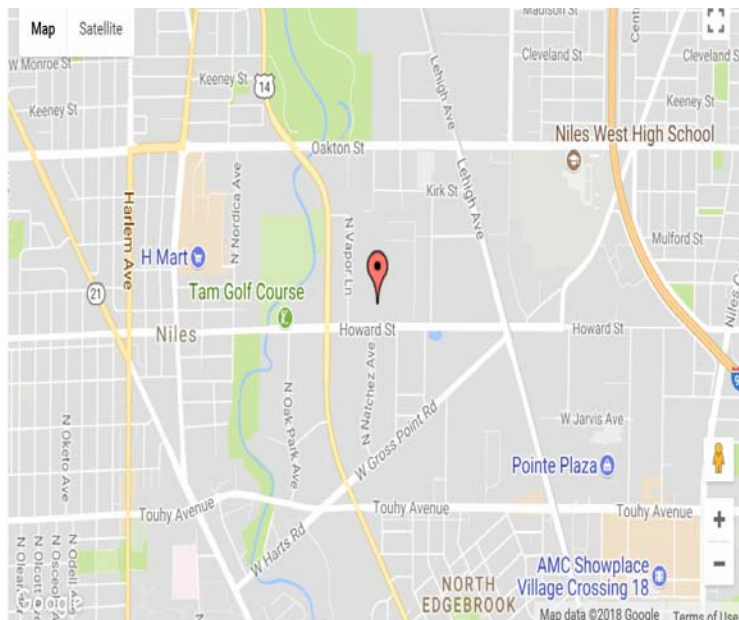
[Or use Mapquest.com](https://www.mapquest.com) for specifics from your location

Energy Sports Complex

Energy Sports Complex is located at: 6352 W. Howard Street, Niles, Illinois 60714-3406
Phone: 847.965.8028

Proximity to major intersections:

- 1 mile East of Milwaukee Avenue & Howard Street
- 0.8 miles East of Waukegan Road & Howard Street
- 0.2 miles East of Caldwell Avenue & Howard Street
- 1/2 mile West of Gross Point Road & Lehigh Avenue
- 1 mile West and 1/2 mile South of Niles West High School



We have ample Energy-authorized parking available to accommodate everyone. Please be respectful of the businesses adjacent to Energy Sports Complex by restricting your parking to one of the following Energy-authorized locations:

Entire strip of spaces running parallel to Howard Street (front of Energy Sports Complex AND the Fibre Craft buildings)

Double strip of spaces located immediately East of the Energy Sports Complex

Segment of spaces located immediately West of the Energy Sports Complex

Segment of spaces located immediately West of the Fibre Craft building

Parallel parking adjacent to the North end of the

Palos Courts

Palos Courts is located at: 12221 S. Ridgeland Ave., Palos Heights, IL, 60463. 708/389-9100x10 or 21

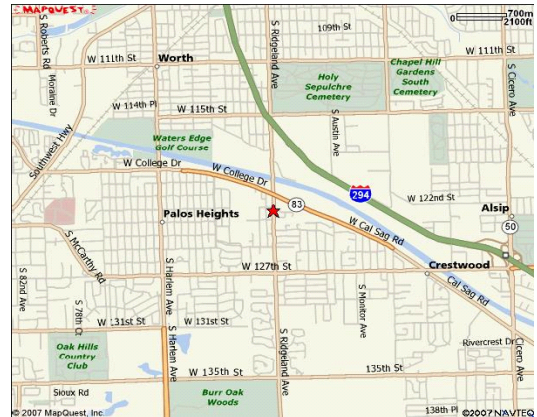
From I-294

Option 1: Take 294 to the 127th Street Exit- exit West onto 127th St. Go to the stoplight after the bridge which will be Rt 83. Turn right onto Rt. 83. Continue to Ridgeland Ave. Left on Ridgeland and the facility will be on your left ½ block down.

Option 2: Take I-294 to the 95th Exit. Go EAST to Ridgeland – right on Ridgeland and continue to just after crossing Rt 83 (light after the bridge) the facility will be on your left.

Or use Mapquest.com for specific directions from your location.

Parking: CAUTION!!!! DO NOT park along the fence or in areas marked **NO PARKING!**. This includes the Mama Vesuvio parking lot. There are extra spaces available at the body shop next door or the church located ½ block south of the facility. You risk having your vehicle towed or ticketed by the Palos Heights Police Department. Try to car pool as much as possible.



Sky High Athletic Center

Sky High Athletic Center– 215 Exchange Dr., Suite E, Crystal Lake, IL 60014 815-356-0006

Take 90 west to 31 north. Take 31 into Crystal Lake.

Exit at route 14. Turn left at top of ramp.

Proceed four lights to Exchange Drive. Turn right on Exchange.

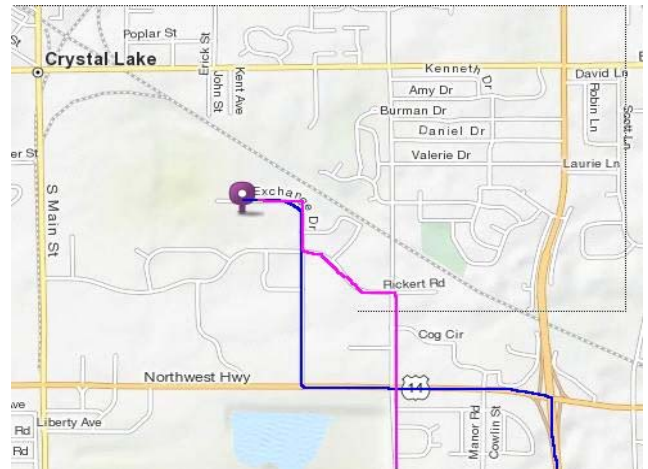
Proceed through the first stop sign and continue to the dead end on left.

OR

Take 90 west to Randall Rd. exit. Turn right or north on Randall Rd. Randall Road curves to the east (right) and becomes Rakow Road.

Follow Rakow Road east to Pingree Road and turn left (north). Stay on Pingree, past Rte. 14 (NW Hwy) and turn left at Congress/Rickert Rd. Turn right on Exchange Dr. and follow it all the way to the end. SHAC is on the right hand side.

Or use Mapquest.com for specifics from your location



Sky High Northshore

Sky High Northshore is located at: 1450 Harris Rd Libertyville, Illinois, 60048

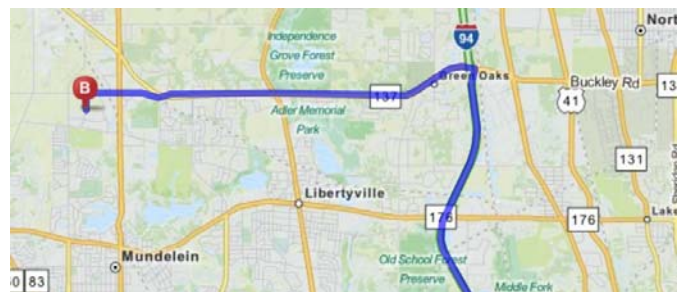
From 294– Take I294 to IL-137/Buckley Rd exit
Go west on Buckley (which turns into Peterson) to Harris Rd approx 5.5 miles

Turn **left** onto **Harris Rd.**

Harris Rd is .2 miles past Franklin Blvd

If you reach N Midlothian Rd you've gone too far

Or use Mapquest.com for specifics from your location



1st Alliance Training Center (formerly Sunsetters VB Center)

1st Alliance Training Center: 1000 Davey Road, Suite 600 Woodridge, IL 60517 (630) 783-8681

(We are located one block south of Internationale Parkway and Lemont Road!)

DO NOT MAPQUEST OR GOOGLE THE ADDRESS - YOU WILL GET INCORRECT DIRECTIONS!!

DIRECTIONS from the North (via I-355):

I-355 south to I-55 Stevenson Expressway North (to Chicago)

I-55 to Lemont Road South - EXIT Lemont Road South
Continue on Lemont Road past the R/R tracks. There is a light at Internationale Parkway.

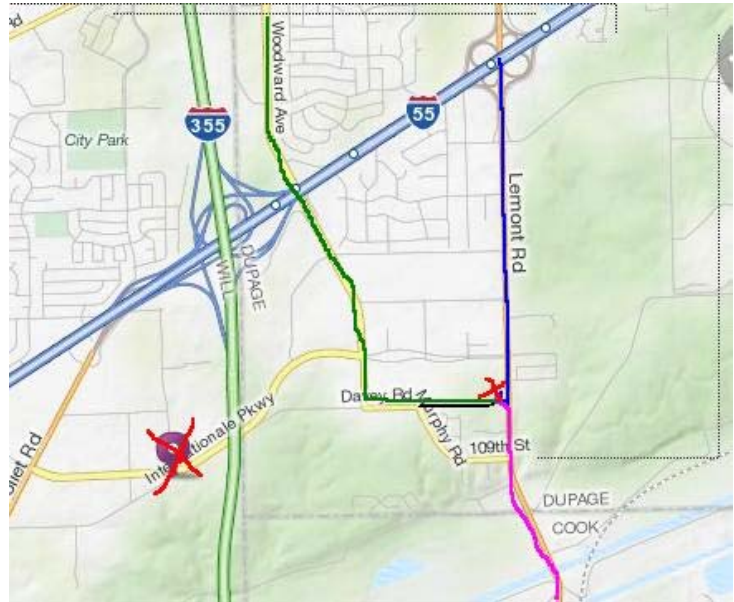
Davey Road is the next street on your right. There is a traffic light. Turn right onto Davey Road.

First driveway on your right make a right. Go up the hill.

We are the building directly IN FRONT of you.

You will be facing the back of the building. Drive around to the front of the building.

Look for the signs!



Directions from the North (via Tri-State I-294)

I-294 South to I-55 Stevenson Expressway South (to St. Louis) - EXIT at I-55 South

Continue on I-55 South to Lemont Road South - EXIT Lemont Road South.

[Follow remainder of instructions from above](#)

Directions from the South (via Tri-State I-294)

I-294 North to I-55 Stevenson Expressway South to St. Louis - EXIT I-55 South.

Continue on I-55 South to Lemont Road South - EXIT Lemont Road South.

[Follow remainder of instructions from above](#)

Directions from West (Naperville area):

75th Street east to Woodward. Turn right (south). Proceed on Woodward until it dead ends (approx. 4 miles)

(Note: You will go over I-55. Woodward becomes Morey at Internationale Parkway.)

Turn left on Davey Road. Continue east on Davey past the stop sign (there is a school on your right).

First driveway on your left you will see a building address numbered 1020.

Turn left - proceed up the hill - we are the building in front of you.

You will be facing the back of the building. Drive around to the front entrance.

Max McCook Athletic & Expo

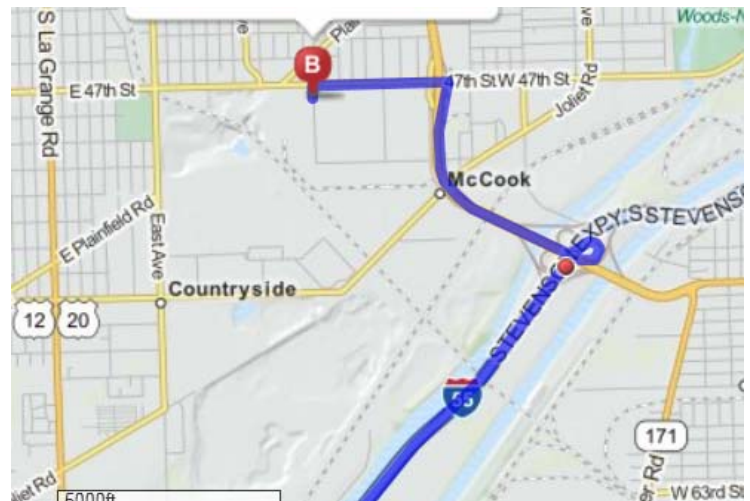
4750 S Vernon Ave, McCook, IL 60525

I-55 to 1st Ave (Rt 171) North on 1st Ave to 47th St. West on 47th street.

Vernon Ave is about 1/2 mile west of 1st Ave.

Large orange, white & black building on 47th St just east of East Ave.

[Or use Mapquest.com for specifics from your location](#)



EPIC/Southland Center

Southland Center is located at 10 Southland Drive, Lynwood, IL 60411 708-418-5554

(note some GPS's may have trouble searching for that address) so follow these directions: Yahoo Maps will find the location –Google Maps does not

From the North:

Take 94 South to 394 and continue South

From the West

Take 294 East (or 80 East to 294 East) to 394 South

From the East

Take 94 West to 394 South

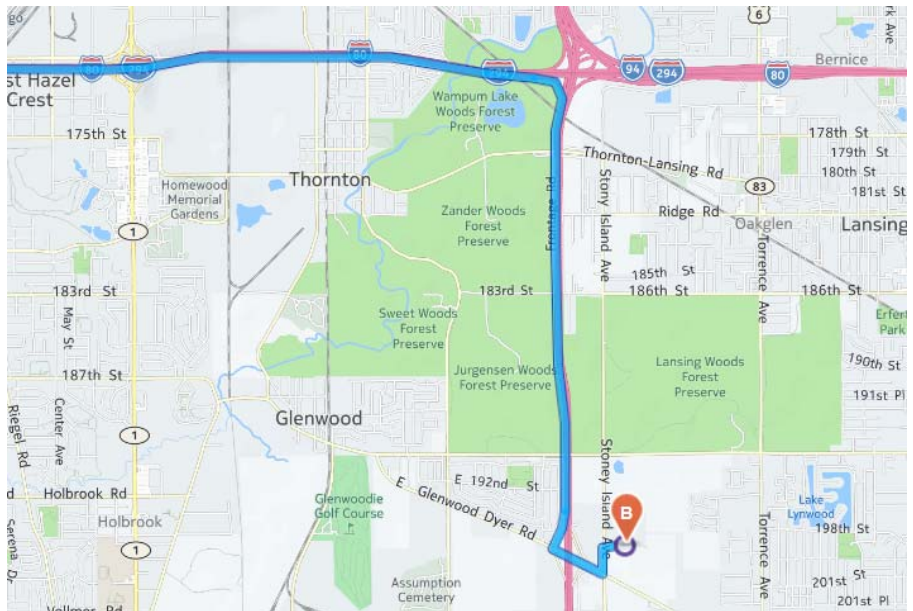
From the South

57 North to 80 East to 294 East to 394 South

Once on 394 South, take 394 to Glenwood Dyer Road.

Turn left (East) at the end of the exit ramp onto Glenwood Dyer Rd.

Turn left (North) at Stoney Island Ave and you will see Southland Center on right



Uno Volleyball

Uno Volleyball is located at
570 Joyce, Rd Joliet, IL 60436

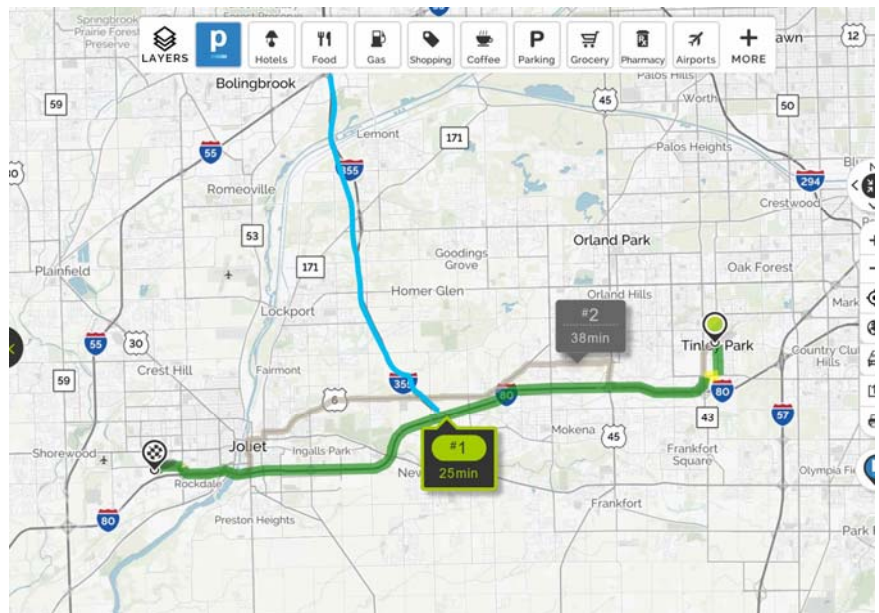
Take I-80 to Larkin North

1. North on Larkin to McDonough St
2. Left on McDonough to Joyce (less than a mile)
3. Left on Joyce to facility

Or

Take I-355 to I-80 west and follow above.

NOTE: Everyone MUST park in marked spots around the building, enter in north or south side of building. Overflow parking is set up at Cornerstone Services-lot just west of UNO parking area. No outside food.

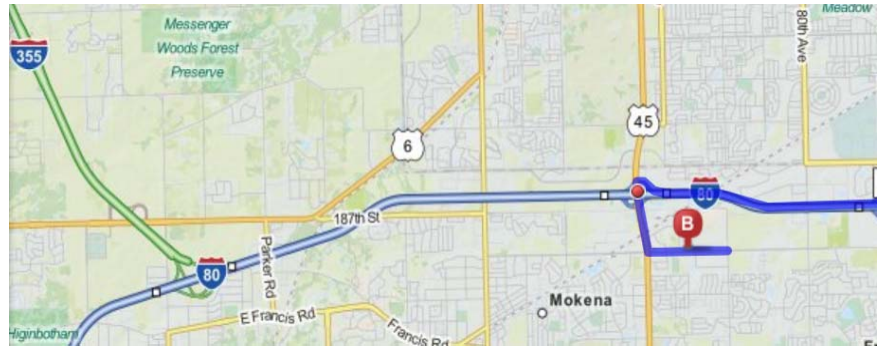


Ultimate Velocity All Sports

**Velocity All Sports is located at:
9120 W 191st Street | Mokena, IL 60448**

Take I-80 to Rt 45 (LaGrange Rd)
Go south on Rt 45 to 191st St
Turn left on 191st to address.
Facility will be on your left-(northside of street)

From 355: Exit at I-80 East to Rt 45
Follow remainder of above directions



Or use [Mapquest.com](http://mapquest.com) for specifics from your location

Velocity Facility rules:

- No Bag Chairs
- No Outside Coffee Beyond Admissions
- No Outside Food
- Special Dietary Needs - Hand in Player Name & Club at concessions

To view a map, click on the link below or copy and paste it into your browser: [http:// mapq.st/2gJpwYu](http://mapq.st/2gJpwYu)

Parking at Velocity

Parking is in the WEST LOT which is on the west side of the building, please follow the marked signs & parking attendants direction.

Additional Parking on Saturdays:

Once WEST LOT is full please Park at Darwin Furniture directly across the street from Velocity All Sport. Please only park on the side of the building, not the front, & follow the marked signs & attendants.

Additional Parking on Sundays:

Once WEST LOT is full please Park anywhere in the Darwin Furniture Parking lot directly across from Velocity All Sport.

Fusion Sports Center

Fusion Sports Center is located at
11104 S Grant HWY

Take I-355 North to I-90 West

1. Take US-20 exit toward Marengo/
Hampshire
2. Keep left to take the ramp toward
Marengo
3. Turn Left onto US Highway 20
4. Continue for about 2 miles.

Facility is on the right

Parking is available in front and back.
No outside food or chairs.
Concessions and bleacher seating
available.

