

# ISO Fittings

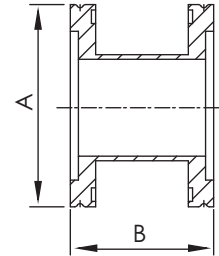
## ISO-K FULL NIPPLES

\*Material: SS 304L

\*Tube Finish: Bead Blast



Part Number	Flange Size	A	B
ISOK-FN-63	ISO63	ISO63	165.10
ISOK-FN-63-1	ISO63	ISO63	175.80
ISOK-FN-80	ISO80	ISO80	196.10
ISOK-FN-80-1	ISO80	ISO80	177.80
ISOK-FN-100	ISO100	ISO100	209.80
ISOK-FN-100-1	ISO100	ISO100	215.90
ISOK-FN-160	ISO160	ISO160	273.30
ISOK-FN-160-1	ISO160	ISO160	275.80



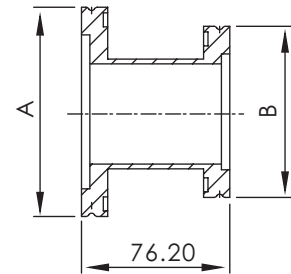
## ISO-K STRAIGHT REDUCING NIPPLES

\*Material: SS 304L

\*Tube Finish: Bead Blast



Part Number	Flange Size	A	B
ISOK-SRN-80x63	ISO80x63	ISO80	ISO63
ISOK-SRN-100x63	ISO100x63	ISO100	ISO63
ISOK-SRN-100x80	ISO100x80	ISO100	ISO80
ISOK-SRN-160x63	ISO160x63	ISO160	ISO63
ISOK-SRN-160x80	ISO160x80	ISO160	ISO80
ISOK-SRN-160x100	ISO160x100	ISO160	ISO100



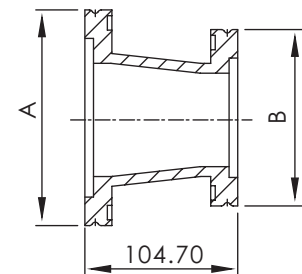
## ISO-K CONICAL REDUCING NIPPLES

\*Material: SS 304L

\*Tube Finish: Bead Blast



Part Number	Flange Size	A	B
ISOK-CRN-80x63	ISO80x63	ISO80	ISO63
ISOK-CRN-100x63	ISO100x63	ISO100	ISO63
ISOK-CRN-100x80	ISO100x80	ISO100	ISO80



\*Note: SS 316L Material Available on Request.

\*Note: Polished and Electro- Polished Tube Finishes Available on Request.

**ISO  
NW**