


SS38 SYSTEM PRODUCT SPECIFICATIONS



January 2016

USA | Australia | Europe



**ROLLEASE
ACMEDA**
PRECISION IN MOTION

CONTENTS

January 2016

SECTION NO.	DESCRIPTION	
SECTION 1 - OVERVIEW		1.1
	PART A - GENERAL SCHEMATICS	1.1
	PART B - SYSTEM OPTIONS	1.2
SECTION 2 - SYSTEM SPECIFICATIONS		2.1
	PART A - SYSTEM SPECIFICATIONS	2.1
SECTION 3 - MATERIAL SPECIFICATIONS		3.1
SECTION 3A - WARRANTY		3.1
SECTION 4 - SPECIFICATION IMAGES		4.1
	DEDUCTIONS	4.1
	ADDITIONAL ARCHITECTURAL VIEWS	4.1
	LOW PROFILE MOUNTING CLIP SPACING	4.1
SECTION 5 - PRODUCT IMAGERY		5.1

DISCLAIMER

INTRODUCTION

This product specifications manual has been produced by Rollease Acmeda to supply the necessary information for safe and correct assembly and installation of this system.

DISCLAIMER

Rollease Acmeda has used reasonable care in preparing the information included in this document, but makes no representations or warranties as to the completeness or accuracy of the information. Information is supplied upon the condition that the persons receiving the information will make their own determination as to its suitability for their purposes prior to use. Rollease Acmeda assumes no liability whatsoever for any damages incurred by you resulting from errors in or omissions from the information included herein. Rollease Acmeda reserves the right to make changes without further notice to any products to improve reliability, function or design.

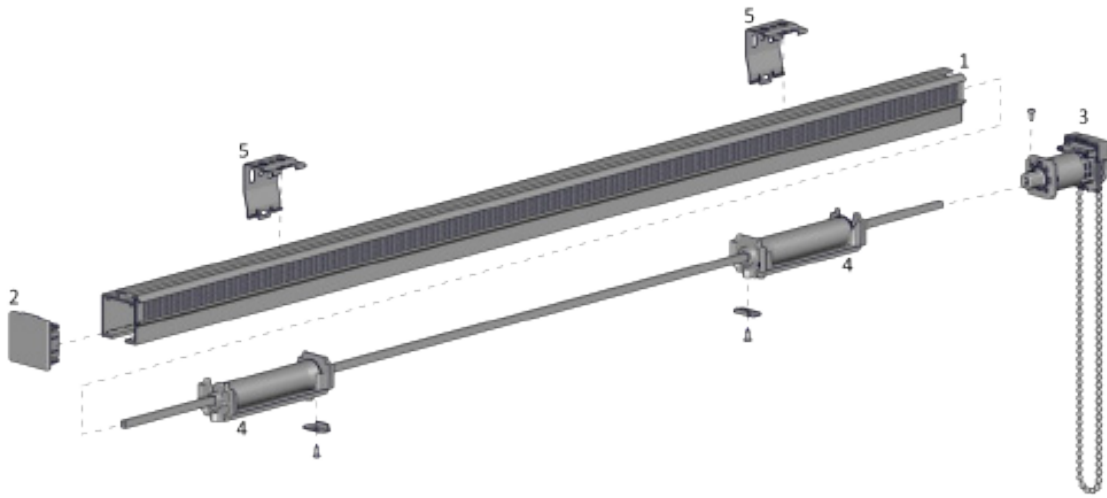
COPYRIGHT

COPYRIGHT © ROLLEASE ACMEDA 2015

All rights reserved. No part of this document may be reproduced or utilized in any means, by any means, electronic or mechanical including photocopying, recordings, or by any information storage or retrieval system, without the express permission from Rollease Acmeda.

PART A – GENERAL SCHEMATICS

The SS38 Roman Blind System offers an elegant square profile housing new operating mechanisms designed for efficient and smooth operation.



SYSTEM INDEX

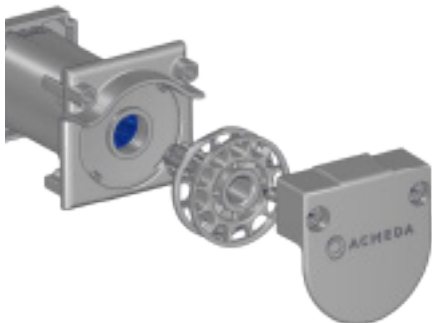
1. SS38 Head Rail [incl. Crimp tape + rod]
2. SS38 Idle End Cap
3. SS38 Drive Unit
4. SS38 Spool Cone [incl. 4m white cord & clamp]
5. SS38 Low Profile Mounting Clip

PART B - SYSTEM OPTIONS

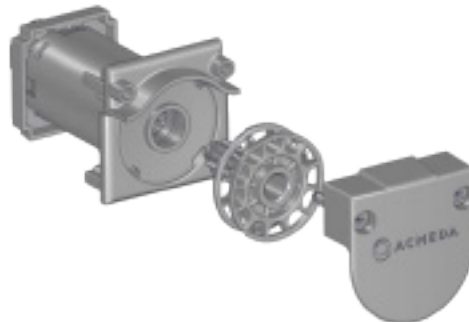
CHAIN CONTROL OPTIONS

Direct Drive [1:1]

The direct drive can be identified by an internal blue component



Planetary Drive [3.5:1]



COLOR RANGE



pure white
069

COMPONENT OPTIONS

Chainhold Tension Device



SECTION 2 - SYSTEM SPECIFICATIONS

PART A - SYSTEM SPECIFICATIONS

5 oz/yd²																			
5 oz/yd²	Width (feet)																		
Drop (ft)	1.3	2.0	2.6	3.3	3.9	4.6	5.2	5.9	6.6	7.2	7.9	8.5	9.2	9.8	10.5	11.2	11.8	12.5	13.1
1.6																			
2.0																			
2.3																			
2.6																			
3.0																			
3.3																			
3.6																			
3.9																			
4.3																			
4.6																			
4.9																			
5.2																			
5.6																			
5.9																			
6.2																			
6.6																			
6.9																			
7.2																			
7.5																			
7.9																			
8.2																			
8.5																			
8.9																			
9.2																			
9.5																			
9.8																			
10.2																			
10.5																			
10.8																			
11.2																			
11.5																			
11.8																			
12.1																			
12.5																			
12.8																			
13.1																			

LEGEND	DESCRIPTION
	DIRECT DRIVE - CTS SPOOL 7.7 lbs. User Effort
	PLANETARY DRIVE - CTS SPOOL 7.7 lbs. User Effort
	Cannot be achieved - outside product specifications

12.5 oz/yd ²																			
12.5 oz/yd ²	Width (feet)																		
Drop (ft)	1.3	2.0	2.6	3.3	3.9	4.6	5.2	5.9	6.6	7.2	7.9	8.5	9.2	9.8	10.5	11.2	11.8	12.5	13.1
1.6																			
2.0																			
2.3																			
2.6																			
3.0																			
3.3																			
3.6																			
3.9																			
4.3																			
4.6																			
4.9																			
5.2																			
5.6																			
5.9																			
6.2																			
6.6																			
6.9																			
7.2																			
7.5																			
7.9																			
8.2																			
8.5																			
8.9																			
9.2																			
9.5																			
9.8																			
10.2																			
10.5																			
10.8																			
11.2																			
11.5																			
11.8																			
12.1																			
12.5																			
12.8																			
13.1																			

LEGEND	DESCRIPTION
	DIRECT DRIVE - CTS SPOOL 7.7 lbs. User Effort
	PLANETARY DRIVE - CTS SPOOL 7.7 lbs. User Effort
	Cannot be achieved - outside product specifications

SECTION 3 - MATERIAL SPECIFICATIONS

PART NUMBER	PRODUCT	MATERIAL	METAL FINISHES
SS38-0130-xxxLLL	SS38 ALUM. PROFILE + CRIMP TAPE + 5MM SQUARE ROD	ALUMINIUM	ANODISED 15
SS38-0411-xxx051	SS38 DIRECT DRIVE	POM, NYLON, ASA, STEEL	
SS38-0420-xxx051	SS38 PLANETARY DRIVE	POM, NYLON, ASA, STEEL	
SS38-0212-xxx034	SS38 LOW PROFILE MOUNTING CLIP	STEEL	ZINC PLATED
SS38-8341-xxx451	SS38 SPOOL WITH CORD (4M)	POM, HDPE, PC, STEEL	
SS38-0120-xxx040	SS38 HEAD RAIL END CAP	NYLON	
RB92-1003-001075	10MM ACM FLAT SPLINE - WITH DOUBLE SIDED TAPE (TWO SIDES)	ASA	
HD31-0125-060025	TOUCH TAPE SEW-ON LOOP 25MM		
VA01-1401-020sss	METAL ROTATION CHAIN	STEEL	NICKLE PLATED

SECTION 3A - WARRANTY

Rollease Acmeda provide a 5 year hardware warranty against defects to the original purchaser (the fabricator/ manufacturer).

The hardware warranty is not to be transferred to the end consumer.

The hardware warranty is limited to the repair or resupply of defective hardware components to the fabricator/ manufacturer only.

The hardware warranty is applicable to normal use.

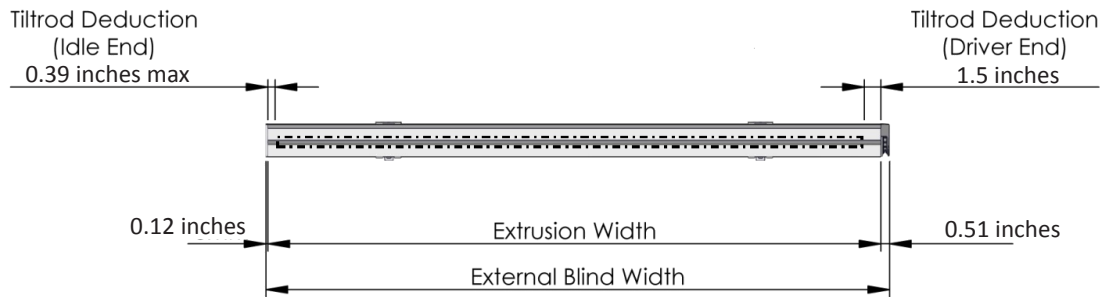
The hardware warranty will not apply where the defect arises due to incorrect assembly and installation.

Retailers are obliged to supply consumers with their own warranty, if required, at the point of purchase.

SECTION 4 - SPECIFICATIONS IMAGES

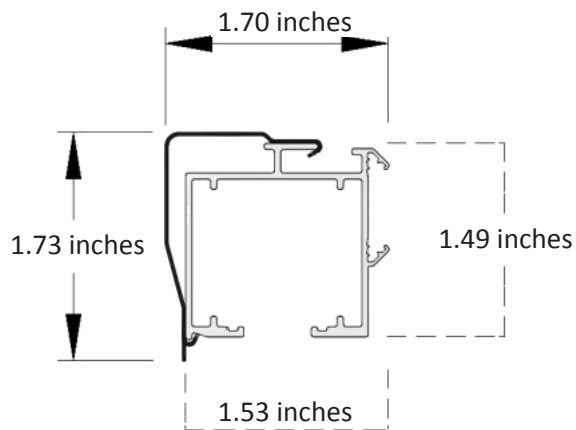
Please contact Rollease Acmeda: info@rolleaseacmeda.com to request electronic copies of the file listed below.

DEDUCTIONS



ADDITIONAL ARCHITECTURAL VIEWS

Low Profile Mounting Clip



LOW PROFILE MOUNTING CLIP SPACING

