

Exploring Next to Goldcorp in the Timmins Mining District

FEBRUARY 2017

McLaren
RESOURCES

Highlights

- Timmins properties neighbouring high value gold mines
- Properties contain established gold mineralized zones with significant exploration potential
- Highly experienced exploration management and technical team based in Timmins focused on discovery
- 42.4 million shares outstanding

World Class Gold District

McLaren Timmins Properties



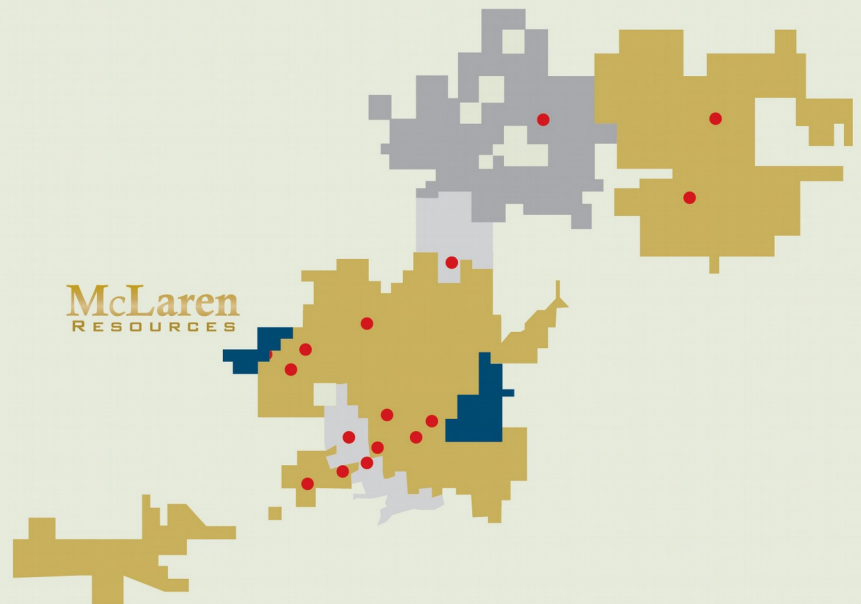
TimGinn Property – Central Timmins

McLaren Timmins Properties

- McLaren Resources
- Goldcorp
- Lexam VG Gold
- Tahoe Resources
- Gold Mine



McLaren
RESOURCES



0 kilometres 20

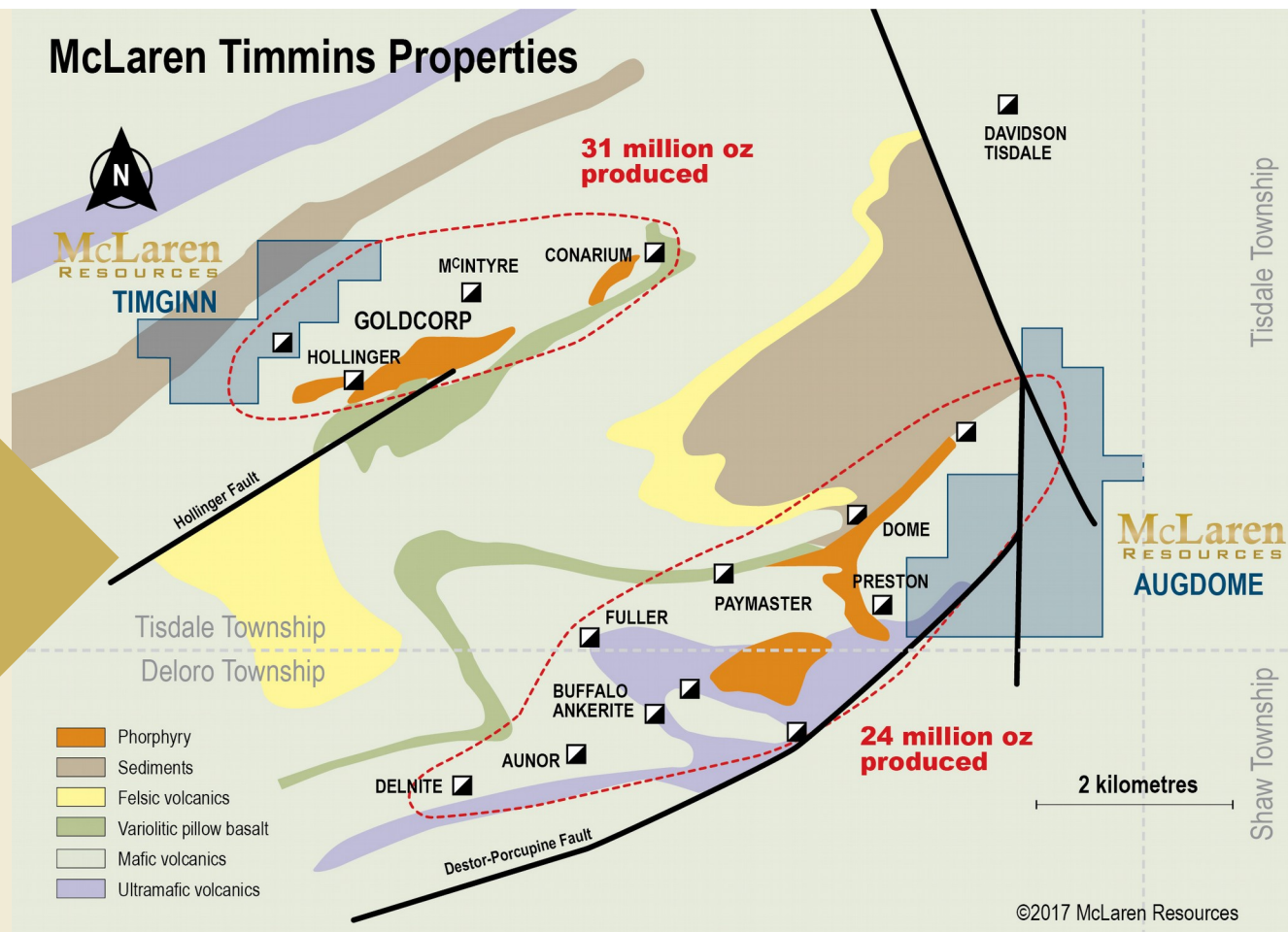
©2017 McLaren Resources

Over 70 million ounces
of gold production in
Timmins

Significant discoveries
are continuing to be
made in Timmins

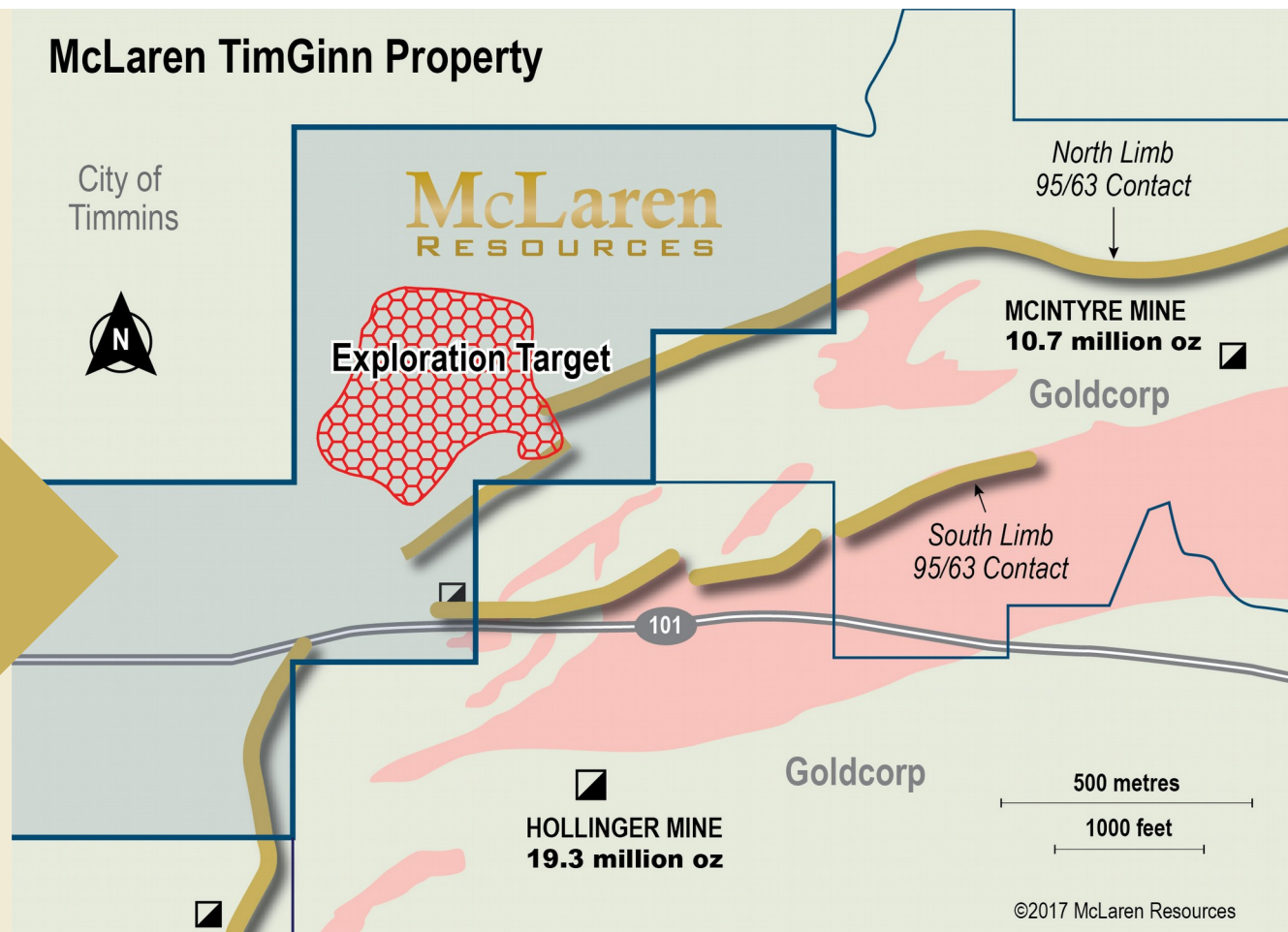
Central Timmins Geology

McLaren's property located on the key geological structure in the world class Timmins camp next to Goldcorp

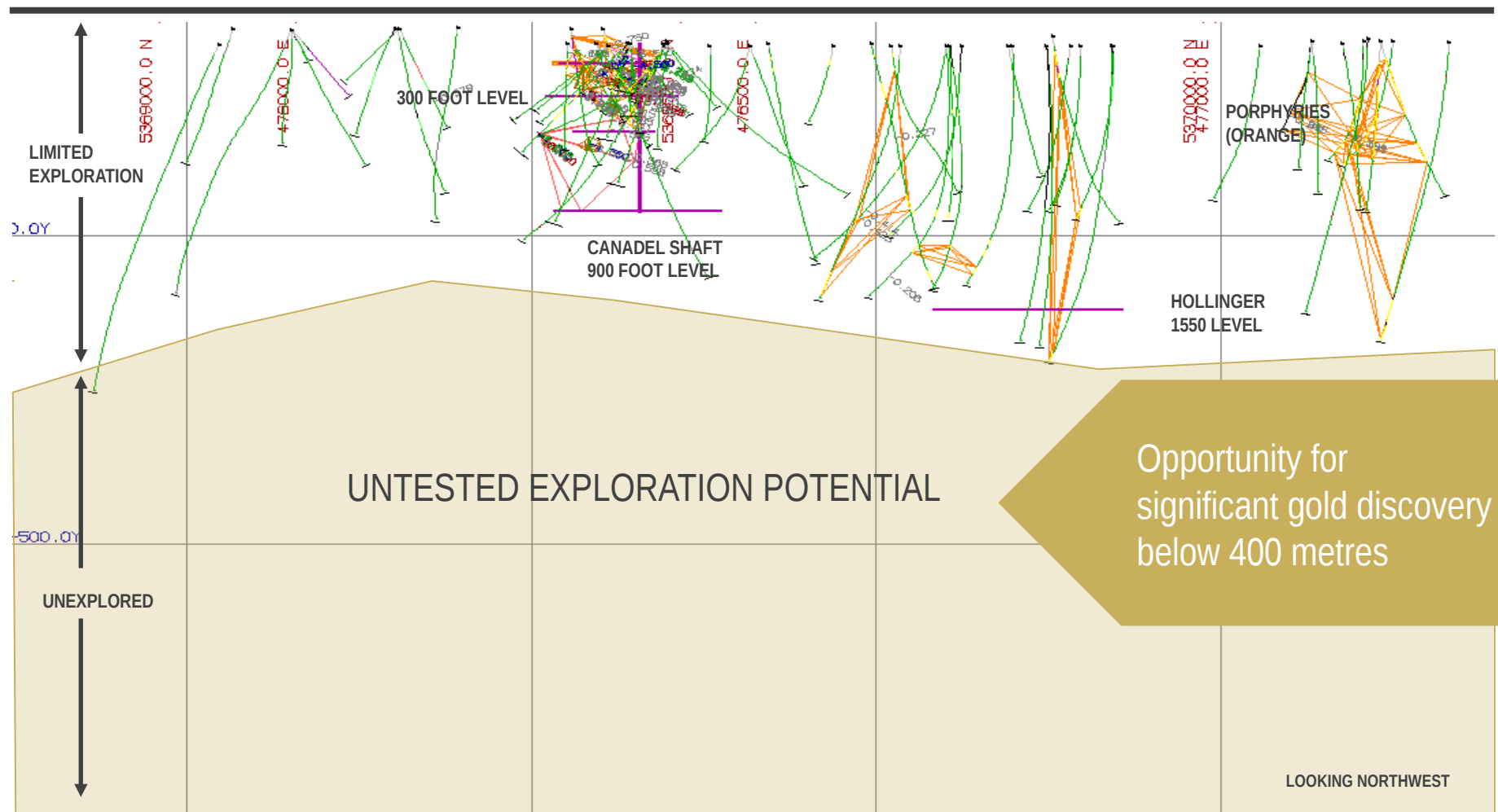


On Trend with Major Gold Production

Exploring key geology that hosts large gold deposits in Central Timmins and looking for significant discovery

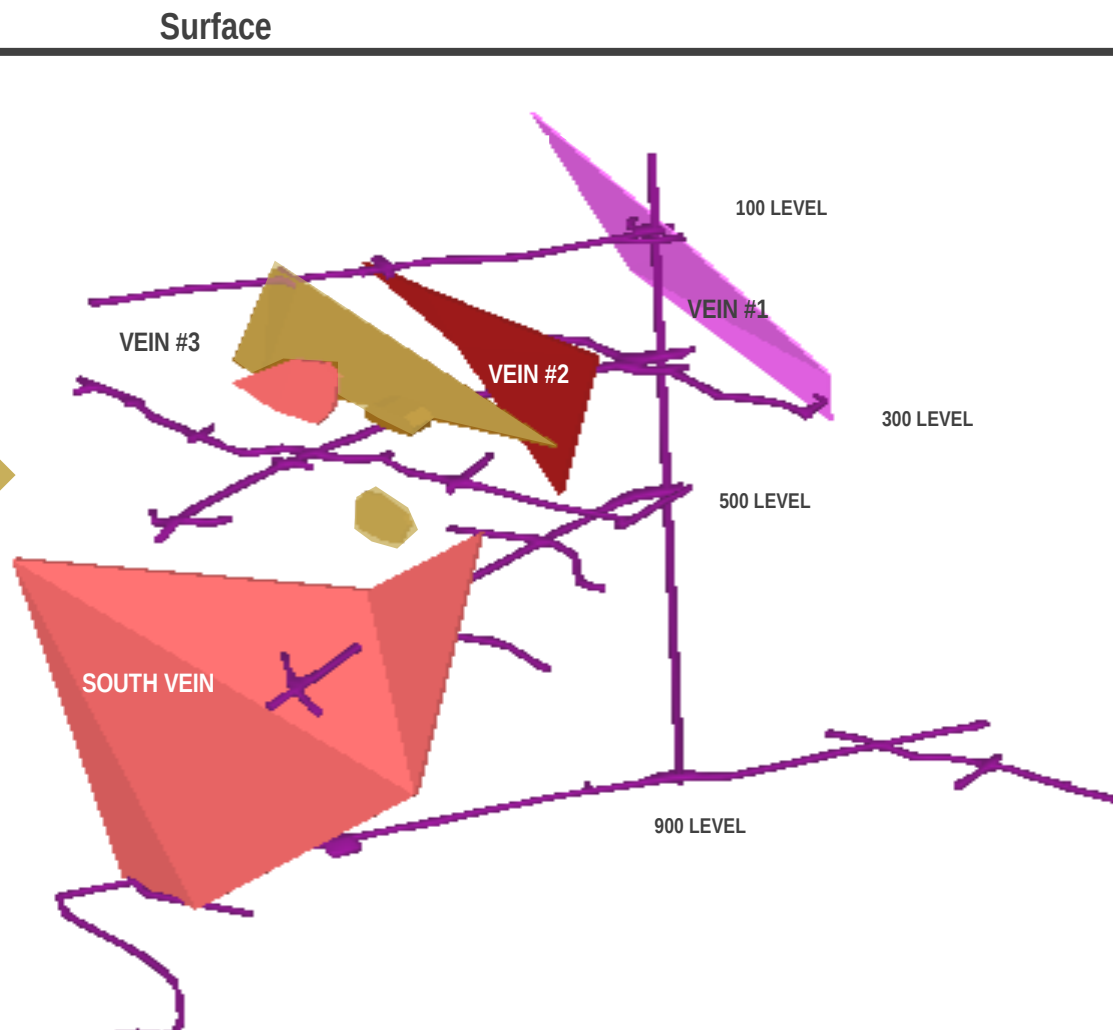


Significant Exploration Potential



Known Gold Mineralization

Potential to expand existing TimGinn gold mineralization



TimGinn Option Terms

- To earn initial 50% interest in the TimGinn property McLaren is to spend \$1,400,000 on exploration work by December 31, 2021.
- Spend a minimum in exploration expenditures of \$200,000 in 2017, and a minimum of \$300,000 each year from 2018 to 2021.

Augdome Property



Goldcorp-owned Dome Mine adjacent to the augdome property

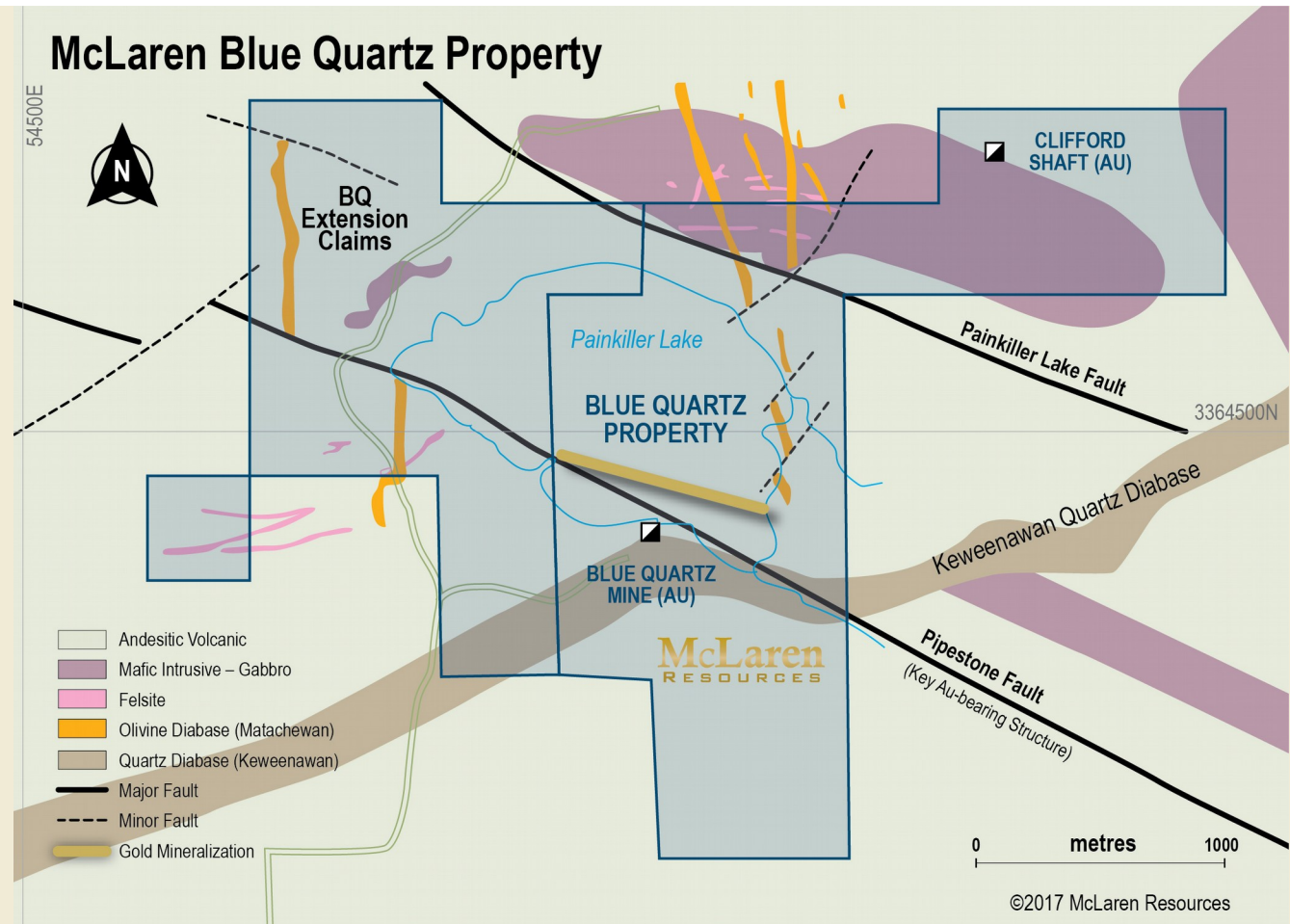
Blue Quartz Property

- Located in the Timmins Mining District East of the city of Timmins
- Neighbouring Black Fox Mine owned by Primero
- Hislop Mine owned by Kirkland Lake
- Fenn Gibb owned by Tahoe Resources



Blue Quartz Geology

- Located on favourable geology for gold discovery
- Near Destor Porcupine Fault regional geological structure associated with significant Timmins gold deposits
- Blue Quartz extension claims 100% owned



- Drilling has expanded the gold mineralization to depth and along strike
- Potential to further expand gold mineralization



Blue Quartz Drill Results

HOLE #	FROM (m)	TO (m)	WIDTH (m)	GRADE (g/t)	G*W
MBQ-11-07	77.26	78.26	1.0	13.3	13.30
MBQ-11-09	341.7	343.7	2.0	13.95	27.90
MBQ-11-10	155.57	158.67	3.1	5.51	17.08
Includes	155.57	156.89	1.3	10.5	13.86
MBQ-11-10	351.00	414.00	63.0	1.21	76.06
Includes	357.00	361.00	4.0	5.56	22.24
Includes	358.00	359.50	1.5	12.8	19.20
RBQ-10-02	367.50	375.90	8.4	3.52	29.57
Includes	373.90	374.90	1.0	23.0	23.0
RBQ-10-03	327.80	328.00	0.2	57.0	11.40
BQ-90-18	158.8	278.0	119.2	0.64	76.3
Includes	275.8	278.0	2.1	6.5	13.87

Corporate Structure

- Trades on CNSX (MCL) and Frankfurt (3ML)
- 42,431,511 shares issued and outstanding
- Warrants outstanding:
 - 3,109,000 at \$0.125 expire August 2, 2018
 - 4,250,000 at \$0.10 expire December 30, 2018
- Options outstanding: 1,725,000 at \$0.125
- 51,890,511 on fully diluted basis

Board of Directors

- **Michael Meredith, *Chairman***

Mr. Meredith has over 25 years experience in the resource exploration industry. Mr. Meredith was previously the President of McLaren Resources from 1999 to 2007. From 2005 to 2008 he was Chairman of Hy Lake Gold.

- **John Heslop, *Director***

Mr. Heslop is a professional geologist with over 40 years in the natural resource sector. Mr. Heslop held the position of Exploration Manager, Central Canada for Texasgulf Inc. from 1974 to 1982, Vice-President, Project Development for Kidd Creek Mines Ltd. from 1982 until Kidd Creek was acquired by Falconbridge Limited in 1986 and Director of Exploration for Falconbridge Limited from 1986 until 1987. He was President and CEO and a Director of Thundermin Resources from 1987 until 2016. Since 2016 he has been Vice-Chairman of West Red Lake Gold Mines.

- **John Holko, *Director***

Mr. Holko is a petroleum engineer, and the President of Lenape Resources based in Batavia, New York. Mr. Holko has over 25 years experience in the oil and gas industry.

- **Paul Crath, *Director***

Mr. Crath is President and CEO of Highvista Gold Inc. Mr. Crath has a Law Degree from Osgoode Hall.

Management Team

- **Michael Meredith, *President***

Mr. Meredith has over 25 years experience in the resource exploration industry. Mr. Meredith was previously the President of McLaren Resources from 1999 to 2007. From 2005 to 2008 he was Chairman of Hy Lake Gold.

- **David McDonald**

Mr. McDonald, C.A. has worked as the CFO of various public and private junior resource companies.

- **Nadim Wakeam, *Corporate Secretary***

Mr. Wakeam, LLB, MBA, corporate securities lawyer, is a partner in a major Toronto law firm specializing in serving public company resource industry clients.

- **Ken Guy, *Exploration Manager***

Mr. Guy, P.Geo. has 30 years of exploration experience in Ontario Canada. Ken has worked as an Exploration Manager with BP Selco, Getty Metals, Cypress Minerals and Lexam VG Gold.

Strategy

- McLaren management is committed to building company value by skillfully investing funds in the exploration and development of its Timmins gold projects.
- Management creates value through successful exploration by finding gold ounces at an effective cost and by exploring targets with high potential.



McLaren Resources Inc.

44 Victoria Street, Suite 1616

Toronto, Ontario M5C 1Y2

(416) 203-6784

mclarenresources.com